

Northern Ireland Transport Statistics

September 2005



Introductory Notes

Transport Statistics 2004-2005 has been prepared by Central Statistics and Research Branch, Department for Regional Development.

The name of the Department or organisation responsible for providing each series of statistics is shown under the appropriate table. The Editor and Production Team acknowledge the assistance received from colleagues in government Departments and agencies, non-departmental public bodies and external organisations, and would like to thank them for their contributions to this publication.

Except where otherwise stated all tables relate to Northern Ireland.

The following symbols are used throughout:

:	not available
-	not applicable or negligible
*	sample size too small for reliable estimates
p	provisional data
r	revised data

2004-2005 denotes the financial year ending 31 March 2005.

Figures provided by statistical methods are rounded to the nearest final digit. There may be an apparent slight discrepancy between the total shown and the sum of the constituent items.

Enquiries concerning this publication
may be directed to:

Mr John Toogood
Central Statistics and Research Branch
Department for Regional Development
Clarence Court
10-18 Adelaide Street
Belfast BT2 8GB

Tel: 02890 540807

E-mail: csrb@drdni.gov.uk

Internet: http://www.drdni.gov.uk/DRDwww_Statistics

Contents

Commentary

7 to 13

Chapter 1 Vehicle Registrations

1.1	Vehicles currently licensed by taxation group: 2000-2004	17
1.2	UK indices (1992=100) of licensed vehicle stock: 1992-2004	17
1.3	Vehicles currently licensed by taxation class and method of propulsion: 2004	18
1.4	Private and Light Goods Tax Class currently licensed by year of first registration, NI/GB comparison: 2004	19
1.5	Private and Light Goods Tax Group currently licensed by year of first registration, in NI: 2000-2004	19
1.6	Private and Light Goods Tax Group currently licensed by engine capacity and method of propulsion: 2000-2004	20
1.7	Vehicles currently licensed by body type: 2000-2004	20
1.8	Vehicles currently licensed by body code: 2004	21
1.9	Private and Light Goods vehicles licensed in NI by make and model: 2004	22 to 24
1.10	20 Most popular Private and Light Goods vehicles in NI: 2004	25
1.11	Motor vehicles registered for the first time in NI by vehicle type: 2000-2004	26
1.12	Cars registered for the first time in NI by make: 2004	27
1.13	Light goods registered for the first time in NI by make: 2004	28
1.14	Heavy goods registered for the first time in NI by make: 2004	29
1.15	Car ownership levels in NI and GB: 2000-2001 to 2004-2005	30
1.16	PLG vehicles per 1000 population aged over 16 years: NI/GB comparisons 2000-2004	30

Chapter 2 Driver and Vehicle Testing

2.1	Motor vehicle testing scheme: 2000-01 to 2004-05	32
2.2	Passenger service vehicle testing scheme: 2000-01 to 2004-05	32
2.3	Goods vehicle testing scheme: 2000-01 to 2004-05	32
2.4	'L' driving tests, NI/GB comparison: 2000-01 to 2004-05	32
2.5	Written theory tests for private car drivers, NI/GB comparison: 2000-01 to 2004-05	33
2.6	Motorcycle 'L' driving tests, NI/GB comparison: 2000-01 to 2004-05	33
2.7	Written theory tests for motorcyclists, NI/GB comparison: 2000-01 to 2004-05	34
2.8	Goods Vehicle (GV) and Passenger Carrying Vehicle (PCV) driving tests, NI/GB comparison: 2000-01 to 2004-05	34
2.9	Goods Vehicle (GV) and Passenger Carrying Vehicle (PCV) driving tests (NI) by type: 2000-01 to 2004-05	35
2.10	Ordinary licences issued by type: 2000-01 to 2004-05	35
2.11	Vocational licences issued by type: 2000-01 to 2004-05	35

Chapter 3 Road Network

3.1	NI public road lengths by type of road: 2001-2005	38
3.2	Road Network Summary Lengths - All Divisions	38
3.3	NI public road lengths by local government district and Roads Service division by type of road: 2005	39
3.4	Public expenditure on NI roads: 2000-01 to 2004-05	40

Chapter 4 Road Freight

4.1	Road freight licenses: 2000-01 to 2004-05	42
4.2	Licensed road service operators (buses & coaches): 2000-01 to 2004-05	42
4.3	Freight transport by road: Goods lifted within Northern Ireland by goods vehicles over 3.5 tonnes: 2000-2004	43
4.4	International road haulage by NI registered powered vehicles over 3.5 tonnes gross vehicle weight: Goods carried by type of transport and commodity - 2004	44
4.5	International road haulage by NI registered powered vehicles over 3.5 tonnes gross vehicle weight: Goods carried by country of unloading/loading - 2004	45
4.6	Rail freight carried to NI from the ROI by commodity: 2000 to 2003	46
4.7	Rail freight carried from NI to the ROI by commodity: 2000 to 2003	46
4.8	Cargo handled at NI airports: 1995-2004	46

Chapter 5 Road Safety

5.1	Road traffic injury collisions by attribution: 1999-2004	48
5.2	Vehicles involved in road traffic injury collisions: 1999-2004	48
5.3	Deaths and injuries caused due to road traffic injury collisions: 1994-2004	49
5.4	Road traffic injury collision deaths by road user by month: 2004	49
5.5	Road traffic injury collision child deaths by road user by month: 2004	50
5.6	Road traffic injury collisions per 100,000 population and per 10,000 vehicles, UK regions: 1995-2004	50
5.7	Road traffic injury collision deaths per 100,000 population and per 10,000 vehicles, UK regions: 1995-2004	51
5.8	Road traffic injury collision casualties per 100,000 population and per 10,000 vehicles, UK regions: 1995-2004	51

Chapter 6 Public Transport

6.1	Ulsterbus/Citybus transport: 2000-01 to 2004-05-Vehicle Stock	54
6.2	Ulsterbus/Citybus transport: 2000-01 to 2004-05-Staff employed	54
6.3	Ulsterbus/Citybus transport: 2000-01 to 2004-05-Passenger journeys, bus miles and kilometres	54
6.4	Ulsterbus/Citybus transport: 2000-01 to 2004-05-Local Stage passenger receipts	54
6.5	NI Rail service assets and staff: 2000-01 to 2004-05	55
6.6	NI Rail service passenger journeys, miles, kilometres and receipts: 2000-01 to 2004-05	55
6.7	NI Rail service parcels handled and parcel receipts: 2000-01 to 2004-05	55

Chapter 7 Air Transport

7.1	Total aircraft movements and air transport movements at NI airports: 1995-2004	58
7.2	Air transport movements at NI airports: 2000-2004	59
7.3	Scheduled and chartered terminal passenger traffic via NI by airport: 1995-2004	60
7.4	UK Airports by number of terminal passengers: 1999 and 2004	61
7.5	Scheduled direct weekly flights from NI airports: 2004 and 2005	62
7.6	International air passenger traffic to and from NI airports: 2003 and 2004	63

Chapter 8 General Transport Statistics

8.1	Employees in transport related employment in NI: March 2005	66
8.2	All employees in transport related employment in NI: March 2001-2005	66
8.3	Method of travel to work, UK/NI comparison: 2004 Autumn	67
8.4	Method of travel to work, NI: 2000-2004	67
8.5	Provision of NI charged car parking by local government district and Roads service division: 2004-05	68
8.6	Deliveries of petroleum for use in NI: 2000-01 to 2004-05	69
8.7	HM Coastguard statistics 2000-2004: Belfast Marine Rescue Sub Centre (MRSC)	69
8.8	Domestic Sea Passenger at NI Ports: 1999-2004	70

Notes for Guidance	72 to 74
---------------------------	----------

Associated Publications	75 to 77
--------------------------------	----------

Sources Used for Publications	78
--------------------------------------	----

SUMMARY

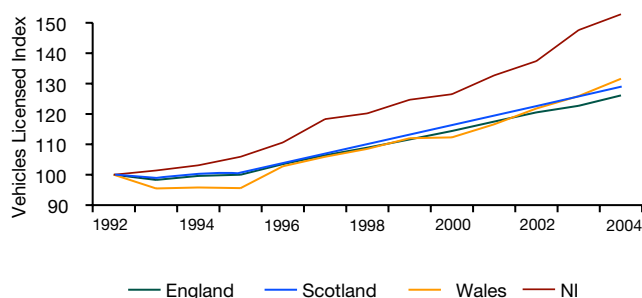
- There were 883,261 vehicles licensed in Northern Ireland by the 31st December 2004. Of these, 84% were Private Light Goods vehicles (PLG's).
- Renault Clio was the most popular model of car licensed in 2004 and accounted for 4.3% of all PLG's.
- 40,321 car 'Learner' driving tests were conducted in Northern Ireland during 2004-05, down 11% on the 45,495 tests conducted during 2003-04.
- Over 60 million tonnes of freight were transported by road within Northern Ireland by goods vehicles weighing over 3.5 tonnes in 2004.
- The number of road deaths occurring as a result of road collisions fell by 2% from 150 to 147.
- During 2004-05 there were 6.9 million rail passenger journeys made, which is the same as the previous year.
- Belfast International Airport was the 11th busiest commercial airport in the UK in 2004 and accounted for 2% of all UK terminal passengers.
- During 2004-05, 741,701 tonnes of petroleum were delivered for use in Northern Ireland, 12% more than in 2003-04.

COMMENTARY

1 Vehicle Registrations

- 1.1 There were 883,261 vehicles licensed in Northern Ireland by the 31st December 2004. Of these, 84% were Private Light Goods (PLG) vehicles. Almost a tenth (9%) of the total vehicles licensed were exempt from duty. Over the 12 year period from 1992 to 2004 licensed vehicle stock in Northern Ireland has increased by 53% compared with 29% in Scotland, 32% in Wales and 26% in England (Tables 1.1 & 1.2, Figure 1).

Figure 1 Index of vehicles licensed in Northern Ireland, England, Scotland and Wales: 1992- 2004



- 1.2 The average age of a currently licensed PLG vehicle in Northern Ireland, at 31 December 2004, was 4.4 years compared with 6 years in Great Britain (Table 1.4).
- 1.3 Of the PLG vehicles currently licensed at the end of 2004, 65% had engine capacities of over 1500cc compared to a figure of 60% at the end of 2000 (Table 1.6).
- 1.4 Renault Clio was the most popular model of car licensed in 2004 and accounted for 4.3% of all PLG's. Ford Fiesta and Vauxhall Corsa were the next most popular models, accounting for 3.3% and 3.2% respectively (Tables 1.9 & 1.10).
- 1.5 The number of vehicles registered for the first time in Northern Ireland in 2004 was 118,229 representing a 3% decrease on the previous year's figure of 122,398. Of these 118,229 vehicles 81% were private cars, 10% were light goods, 4% were motorcycles, 3% were

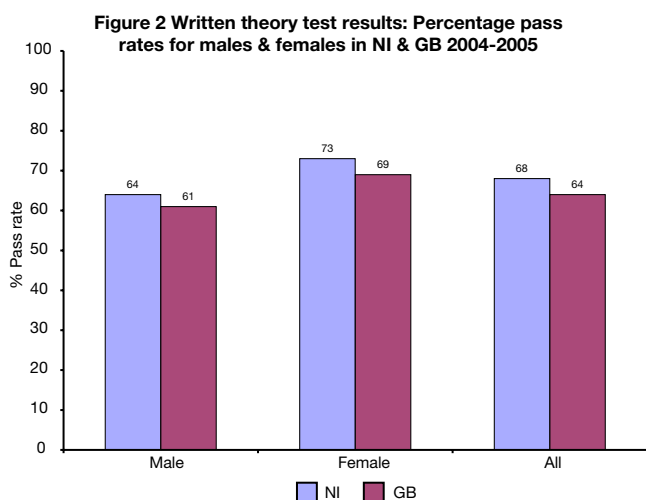
heavy goods, with tractors, buses and exempt vehicles accounting for the remaining 2% (Table 1.11).

- 1.6 During 2004 there were 567 PLG vehicles per 1,000 population aged over 16 years in Northern Ireland compared to a figure of 626 per 1,000 population aged over 16 years in Great Britain (Table 1.16).

2 Driver and Vehicle Testing

- 2.1 There were 473,771 vehicle tests completed under the motor vehicle testing scheme during 2004-05, a 9% increase on the 433,690 tests completed during 2003-04. The percentage of tests completed, which were retests, was 28% the same as the previous year (Table 2.1).
- 2.2 The number of passenger service vehicle tests increased by 9% from 12,095 during 2003-04 to 13,188 in 2004-05. The number of goods vehicle tests decreased by 10% from 70,315 to 63,560 over the same period (Tables 2.2 & 2.3).
- 2.3 40,321 car 'Learner' driving tests were conducted in Northern Ireland during 2004-05, down 11% on the 45,495 tests conducted during 2003-04. The overall pass rate for 'Learner' driving tests 2004-05 was 48% compared with 47% for the previous year. In comparison the overall pass rate in GB was 42% compared with 43% the previous year. During 2004-05 the male pass rate for the 'learner' driving tests in NI was 53% compared to 43% for females (Table 2.4).

- 2.4 68% of candidates passed the written theory test for private car drivers during 2004-05, compared to 64% in Great Britain. During 2004-05 the pass rate for females in Northern Ireland was 73% compared to 64% for males (Table 2.5, Figure 2).



- 2.5 The pass rate for motorcycle 'Learner' driving tests in Northern Ireland was 73% compared with 64% in Great Britain. The pass rate for the written theory tests for motorcyclists was 84% in Northern Ireland compared to 86% in Great Britain (Tables 2.6 & 2.7).
- 2.6 A total of 2,335 Goods Vehicle (GV) and Passenger Carrying Vehicle (PCV) driving tests were conducted in Northern Ireland during 2004-05. The overall pass rate for these tests was 66%, an increase of 3 percentage points on the previous year (Table 2.8).
- 2.7 Of the 159,481 ordinary licenses issued during 2004-05, 16% were provisional, 49% were full and 24% were replacement. Of the 9,314 vocational licenses issued, 14% were passenger carrying vehicles, 38% were large goods vehicle licenses and 34% were replacements. (Table 2.10 & 2.11).

3 Road Network

- 3.1 By the end of 2004-05 there were 24,930 kilometres of public road in Northern Ireland. Unclassified roads accounted for the largest proportion of all roads (60%) followed by Class III (18.9%), Class II (11.6%), Class I (9.1%) and motorways (0.5%) (Table 3.1).
- 3.2 Analysis of the urban/rural split of the road network reveals that 20% of road lengths are urban and 80% are rural. 87% of motorway length in Northern Ireland is considered to be rural as is 66% of Class I dual carriageways (Table 3.2).
- 3.3 46% of all the motorways in Northern Ireland are located within the Roads Service Eastern Division compared with 10% in Western Division. 14% of Class I Roads in Eastern Division are motorways compared to 4% in Northern Division, 3% in Southern Division and 2% in Western Division. Eastern Division has the highest percentage of unclassified roads (69%), followed by Southern, Western and Northern divisions with 60%, 59% and 56% respectively (Table 3.3).
- 3.4 Maintenance (structural, routine and winter) accounted for 36% of the £290 million spend on the roads. New construction and improvement accounted for 37% of the total spend while public lighting accounted for 4% (Table 3.4).

4 Freight

- 4.1 By the end of 2004-05 there were 2,295 licensed freight operators in Northern Ireland, down 7% compared with 2,481 for 2003-04. 76% of operators were licensed to carry goods internationally in 2004-05. There were 6,509 licensed freight vehicles in operation at the end of 2004-05, a decrease of 4% on the 6,788 licensed at the same time in the previous year (Table 4.1).
- 4.2 During 2004-05 there were 142 licensed bus and coach operators and some 2,301 buses or coaches. 77% of operators and 96% of vehicles had international licenses (Table 4.2).
- 4.3 Over 60 million tonnes of freight were transported by road within Northern Ireland by goods vehicles weighing over 3.5 tonnes in 2004. Crude Minerals were the greatest single commodity transported within Northern Ireland and accounted for almost 25 million tonnes, (41% of all tonnes moved). Food, drink and tobacco accounted for over 9 million tonnes (16%) while Building materials accounted for 8 million tonnes (13%) (Table 4.3).
- 4.4 During 2004, 7,422 tonnes of freight were transported on international outward journeys from Northern Ireland by NI registered hauliers. Of these, the single largest commodity was Building materials, accounting for 3,241 tonnes (44%). The next largest single commodity was Foodstuffs, accounting for 1,143 (15%). On International inward journeys to Northern Ireland, 2,996 tonnes were carried. The largest single commodity carried was fuels, which accounted for 607 tonnes (20%) (Table 4.4).

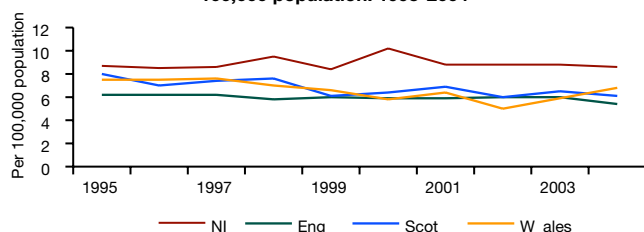
- 4.5 In tonnage terms, the Irish Republic was the most popular location in the European Community for exports and imports. Outward journeys to Republic of Ireland accounted for 7322 (99%) of the overall total, with 2,909 tonnes (97%) carried on inward journeys from the Republic of Ireland (Table 4.5).
- 4.6 The total cargo handled at NI airports increased from 30,797 tonnes in 2003 to 33,103 tonnes in 2004 (Table 4.8).

5 Road Safety

- 5.1 Between 2003 and 2004 the total number of road traffic injury collisions decreased by 7% from 6,076 to 5,657. Over the same period the number of road casualties fell by 8% from 10,325 to 9,507. The number of road deaths occurring as a result of road collisions fell by 2% from 150 to 147 (Tables 5.1 & 5.3).
- 5.2 During 2004 there were 10,679 vehicles involved in road traffic injury collisions representing a 6% decrease on the 11,381 vehicles during 2003. Cars accounted for 81% of vehicles involved in road collisions (Table 5.2).
- 5.3 There were 331 road traffic injury collisions per 100,000 population in Northern Ireland, which was a 7% decrease on the 2003 rate of 355. When expressed as a rate per 10,000 vehicles, the road traffic injury collision rate in Northern Ireland is 64 per 10,000 vehicles compared to 67 in England, 57 in Scotland and 59 in Wales (Table 5.6).

- 5.4 In comparison with Great Britain, Northern Ireland has consistently shown the highest road collision death rate. In 2004 the rate in Northern Ireland was 8.6 deaths per 100,000 compared to 8.8 deaths per 100,000 in 2003. Wales has the second highest rate of 6.8 per 100,000 followed by Scotland with a rate of 6.1 and England with a rate of 5.4. Northern Ireland also had the highest rate of road traffic injury collision deaths per 10,000 vehicles (1.7), followed by Scotland and Wales both (1.2) and England (1.0) (Table 5.7, Figure 3).

Figure 3 Road traffic injury collision deaths per 100,000 population: 1995-2004



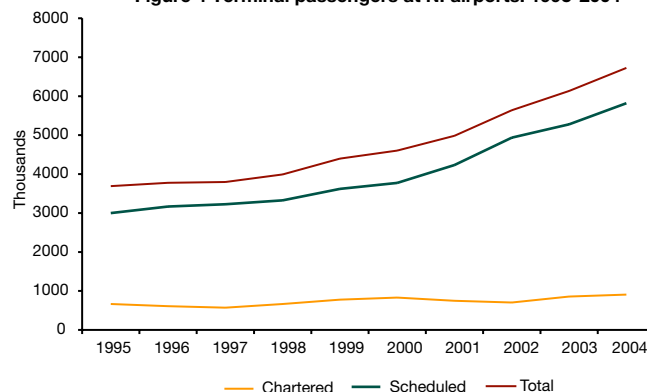
6 Public Transport

- 6.1 At the end of 2004-05 there were 1,220 Ulsterbuses and 256 Citybuses on the roads which were on average, 12.6 years and 7.0 years old, respectively (Table 6.1).
- 6.2 From 2003-04 to 2004-05 the number of passenger journeys on Ulsterbus has decreased slightly from 45.9 to 45.2 million and increased from 19.5 to 19.9 million on Citybus (Table 6.3).
- 6.3 Ulsterbus local stage passenger receipts rose by 6% to £68.4 million over the period 2003-04 to 2004-05 while Citybus local stage passenger receipts rose by 9% to £21.3 million (Table 6.4).
- 6.4 During 2004-05 there were 6.9 million rail passenger journeys made, which is the same as the previous year. Railway passenger receipts, also increased, from 16.8 to 17.2 million, a rise 3% (Table 6.6).

7 Air Transport

- 7.1 There were 81,121 air transport movements (landings and takeoffs) during 2004, an increase of 7% on the 2003 figure of 75,810.
- 7.2 Between 2002 and 2003, air transport movements at Belfast International rose by 9%, Belfast City rose by 6% and City of Derry rose by 0.7%. Belfast International Airport accounted for 53% of all air transport movement, Belfast City Airport 41% and City of Derry Airport 5%. Of the 81,121 Air transport movements occurring during 2004, 87% were scheduled and 13% were chartered. The scheduled movements consisted entirely of passenger craft, while the chartered movements comprises of 49% passenger craft and 51% cargo craft (Table 7.2).
- 7.3 During 2004, 6.7 million terminal passengers passed through Northern Ireland Airports, representing an increase of 10% on the 2003 figure. Between 2003 and 2004 the number of passengers travelling on scheduled flights rose by 10% to 5.8 million and passenger numbers on chartered flights rose by 6% to 0.9 million (Table 7.3, Figure 4).

Figure 4 Terminal passengers at NI airports: 1995-2004



- 7.4 In terms of terminal passengers, Belfast International was the 11th busiest commercial Airport in the UK and accounted for 2% of all UK terminal passengers while Belfast City Airport was the 16th busiest, accounting for 1% of terminal passengers. In the 5 years between 1999 and 2004, Belfast International saw an increase of 46% and Belfast City an increase of 63% in the number of terminal passengers (Table 7.4).
- 7.5 Malaga was the most popular international destination from Belfast International with 115,320 passengers flying there during 2004, Palma de Mallorca was the second most popular destination with 104,698 passengers (Table 7.6).
- 8.5 During 2004-05, 741,701 tonnes of petroleum were delivered for use in Northern Ireland, 12% more than in 2003-04 (661,516). 48.5% of tonnes delivered were unleaded petrol and 51.5% were diesel. (Table 8.6).
- 8.6 There were 350 coastguard search and rescue operations carried out by the Belfast Marine Rescue Sub Centre, which is a decrease of 3% on the 2003 figures. 48% of all search and rescue operations in 2004 were due to pleasure craft getting into difficulties (Table 8.7).
- 8.7 There were 2,576,481 domestic sea passengers using Northern Ireland ports in 2004. Those travelling to and from Stranraer make up over half (51%) of the Northern Ireland total (Table 8.8).

8 General Transport Statistics

- 8.1 In March 2005 there were 44,540 people in transport related employment in Northern Ireland. Of these, 77% were male and 23% were female employees. 91% of the males were full-time employees compared with 59% of females (Table 8.1).
- 8.2 During the last 5 years there have been more people employed in the sale of car, motorcycles and fuel than in any other transport related activity (Table 8.2).
- 8.3 In 2004 the most frequently used method of travel to work was car, van or minibus, with 84% of the workforce in Northern Ireland using these methods. This compares to 71% in the United Kingdom as a whole (Table 8.3).
- 8.4 Travel to work by car, van or minibus in Northern Ireland has increased slightly from 81% in 2000 to 84% in 2004 (Table 8.4).

Chapter 1

Vehicle Registration

1.1 Vehicles currently licensed by taxation group: 2000-2004

Taxation Group	Taxation ^{1,2} Classes	Number at 31 December									
		2000		2001		2002		2003		2004	
			%		%		%		%		%
Private Light Goods	11, (36,39,48,49,59)	615180	84.2	644968	84.1	666731	83.9	711913	83.5	737198	83.5
M/C, SC/Mopeds	17,18	14116	1.9	15205	2.0	17598	2.2	23820	2.8	24533	2.8
Gen (HGV) Goods	1,2,10, (23,45,46,53)	17864	2.4	19415	2.5	20244	2.5	22100	2.6	23062	2.6
Bus	34, (38)	2266	0.3	2315	0.3	2322	0.3	2353	0.3	2378	0.3
Agric Tractors	40 & 44	5048	0.7	4901	0.6	5731	0.7	7503	0.9	8674	1.0
Other	14-16, 19, 37, 47, 50	1287	0.2	1366	0.2	1347	0.2	1671	0.2	1794	0.2
	& 55, 57, (58), 79, 81, 82										
Crown	60	3822	0.5	6427	0.8	6383	0.8	6172	0.7	6116	0.7
Exempt	>60 except 79,81,82	71147	9.7	72708	9.5	74121	9.3	77210	9.1	79506	9.0
Total		730730	100.0	767305	100.0	794477	100.0	852742	100.0	883261	100.0

1 The tax classes in brackets have been included in 2004

2 New Tax Class 36 introduced 2003.

Source: DVLNI

1.2 UK indices (1992=100) of licensed vehicle stock: 1992-2004

	Thousands							
	England	Index ^r	Scotland	Index ^r	Wales	Index ^r	NI	Index
1992 ^r	21722	100.0	1900	100.0	1229	100.0	578	100.0
1993	21350	98.3	1874	98.6	1174	95.5	586	101.4
1994	21639	99.6	1900	100.0	1177	95.8	596	103.1
1995	21730	100.0	1910	100.5	1175	95.6	612	105.9
1996	22477	103.5	1966	103.5	1264	102.8	639	110.6
1997	23117	106.4	2023	106.5	1301	105.9	684	118.3
1998	23657	108.9	2073	109.1	1334	108.5	695	120.2
1999	24236	111.6	2131	112.2	1376	112.0	721	124.7
2000	24856	114.4	2188	115.2	1380	112.3	731	126.5
2001	25532	117.5	2262	119.1	1433	116.6	767	132.7
2002	26168	120.5	2330	122.6	1497	121.8	794	137.4
2003	26653	122.7	2383	125.4	1547	125.9	853	147.6
2004	27393	126.1	2448	128.8	1617	131.6	883	152.8

Sources: GB - DFT; NI - DVLNI

1.3 Vehicles currently licensed by taxation class and method of propulsion: 2004

At 31 December

Code	Taxation class	Method of propulsion			Totals
		Petrol	Heavy oil	Others	
1	HGV	69	21220	1	21290
2	Trailer HGV	0	151	0	151
10	Private/Heavy Goods	4	597	0	601
11	Private/Light Goods (PLG)	267454	195269	64	462787
14	Special vehicle	2	1295	10	1307
15	Special trailer	0	1	0	1
16	Small island vehicle	0	0	0	0
17	Bicycle	24518	12	3	24533
18	Bicycle (preferential)	0	0	0	0
19	Electric motorcycle	0	0	2	2
23	HGV CT	0	56	0	56
34	Bus	11	2284	0	2295
36	Euro 4 Light	0	128	0	128
37	Steam vehicle	0	0	5	5
38	RPV bus	0	83	0	83
39	LGV	132	18770	5	18907
40	Agricultural machine	78	8520	5	8603
44	Mowing machine	1	70	0	71
45	RPV HGV	0	931	0	931
46	RPV trailer HGV	0	25	0	25
47	Recovery vehicle	1	291	1	293
48	Petrol Car	141648	0	0	141648
49	Diesel Car	0	113660	0	113660
50	Tricycle	80	6	0	86
53	RPV HGV CT	0	8	0	8
55	General haulage	0	11	0	11
57	Special types	0	51	0	51
58	RPV Special Types	0	2	0	2
59	Alternative Fuel	0	0	68	68
60	Crown vehicle	1349	4749	18	6116
61	Not licensed	3661	1166	5	4832
65	Ambulance	54	301	0	355
66	Fire engine	10	168	0	178
67	Road Roller	0	0	0	0
70	Exempt (No licence)	6	50	0	56
71	Fire service	123	103	0	226
72	Lifeboat haulage	0	1	0	1
73	Mine rescue	0	0	0	0
75	Lighthouse authority	0	0	0	0
76	Police	2026	1017	0	3043
77	Limited use	118	1024	2	1144
78	Disabled	42029	21881	5	63915
79	Electric	0	0	33	33
81	Gritting vehicle	0	3	0	3
82	Snow plough	0	0	0	0
85	Disabled passenger	22	190	0	212
87	Health service vehicle	28	831	5	864
88	Historic Vehicle	3499	1165	1	4665
90	Exempt (Nil licence)	8	7	0	15
91	Personal export private	0	0	0	0
92	Direct export private	0	0	0	0
93	D or P export bicycle	0	0	0	0
98	Consular	0	0	0	0
99	Diplomatic	0	0	0	0
Total		486931	396097	233	883261

Source: DVLNI

1.4 Private and Light Goods vehicles¹ currently licensed by year of first registration, NI/GB comparison: 2004

At 31 December

Registered less than (Years)	Northern Ireland		Great Britain	
	Number	%	Number	%
1	94540	12.8	2324682	9.1
2	184108	25.0	4549308	17.7
3	268020	36.4	6792620	26.5
4	345527	46.9	8939511	34.8
5	415096	56.3	10935244	42.6
6	479971	65.1	12817110	49.9
7	539238	73.1	14618137	57.0
8	589912	80.0	16239325	63.3
9	632841	85.8	17649230	68.8
10	667800	90.6	18982042	74.0
11	693863	94.1	20523860	80.0
12	710694	96.4	22078504	86.0
13	720417	97.7	23289310	90.7
14	726625	98.6	24096487	93.9
15	730689	99.1	24638040	96.0
Total	737198	100.0	25665557	100.0
Average age of vehicles (years)		4.4	6.0	

1 Excludes electric cars and cars classified by horsepower.

Sources: NI - DVLNI; GB - DFT

1.5 Private and Light Goods Tax Group currently licensed by year of first registration in NI: 2000-2004

Number at 31 December

Registered less than (years)	2000		2001		2002		2003		2004	
		%		%		%		%		%
1	89864	14.6	93593	14.5	95901	14.4	97125	13.6	94540	12.8
2	170314	27.7	173366	26.9	179621	26.9	185526	26.1	184108	25.0
3	244219	39.7	248732	38.6	254519	38.2	266574	37.4	268020	36.4
4	309359	50.3	317839	49.3	325320	48.8	340112	47.8	345527	46.9
5	367674	59.8	379681	58.9	390598	58.6	409040	57.5	415096	56.3
6	419426	68.2	435155	67.5	448256	67.2	472442	66.4	479971	65.1
7	464807	75.6	483865	75.0	499238	74.9	527868	74.1	539238	73.1
8	501296	81.5	525896	81.5	543444	81.5	575957	80.9	589912	80.0
9	529991	86.2	558898	86.7	580400	87.1	616806	86.6	632841	85.8
10	554079	90.1	583745	90.5	607772	91.2	649339	91.2	667800	90.6
11	575639	93.6	603186	93.5	627071	94.1	672003	94.4	693863	94.1
12	591212	96.1	619088	96.0	641031	96.1	686281	96.4	710694	96.4
13	601386	97.8	629715	97.6	651265	97.7	695772	97.7	720417	97.7
14	606938	98.7	636283	98.7	657672	98.6	702176	98.6	726625	98.6
15	610211	99.2	639733	99.2	661491	99.2	706111	99.2	730689	99.1
Totals	615180	100.0	644968	100.0	666731	100.0	711913	100.0	737198	100.0

Source: DVLNI

1.6 Private and Light Goods Tax Group currently licensed by engine capacity and method of propulsion: 2000-2004

Engine capacity	Number at 31 December									
	2000		2001		2002		2003		2004	
		%		%		%		%		%
Unknown	0	0.0	6	0.0	102	0.0	1	0.0	11	0.0
Up to 1000cc	30696	5.0	30923	4.8	30348	4.6	30563	4.3	29908	4.1
1001-1500cc	218017	35.4	219175	34.0	217878	32.7	224726	31.6	228772	31.0
1501-2000cc	287434	46.7	308512	47.8	326288	48.9	353798	49.7	368441	50.0
Over 2000cc	79032	12.8	86352	13.4	92115	13.8	102825	14.4	110066	14.9
Total	615179	100.0	644968	100.0	666731	100.0	711913	100.0	737198	100.0
Cars classified by horsepower	1		0		0		0		0	
Grand total	615180		644968		666731		711913		737198	
Petrol	403296	65.6	406867	63.1	403172	60.5	411256	57.8	409234	55.5
Diesel	211775	34.4	238012	36.9	263459	39.5	300535	42.2	327827	44.5
Other	109	0.0	89	0.0	100	0.0	122	0.0	137	0.0

Source: DVLNI

1.7 Vehicles currently licensed by body type: 2000-2004

Body type	Number at 31 December									
	2000		2001		2002		2003		2004	
		%		%		%		%		%
Car	622488	85.2	650323	84.8	671180	84.5	712835	83.6	736706	83.4
Taxi	376	0.1	379	0.0	413	0.1	513	0.1	538	0.1
Motorcycle	16738	2.3	17873	2.3	20230	2.5	26682	3.1	27326	3.1
Tricycle	67	0.0	64	0.0	72	0.0	92	0.0	96	0.0
Light Goods Vehicle	42287	5.8	61603	8.0	63979	8.1	57405	6.7	59591	6.7
Heavy Goods Vehicle	31994	4.4	19963	2.6	20890	2.6	35200	4.1	37572	4.3
Bus/Coach	5228	0.7	5350	0.7	5363	0.7	5462	0.6	5434	0.6
Agricultural Vehicle	8068	1.1	7878	1.0	8557	1.1	10487	1.2	11666	1.3
Other	3484	0.5	3872	0.5	3793	0.5	4066	0.5	4332	0.5
Total	730730	100.0	767305	100.0	794477	100.0	852742	100.0	883261	100.0

Source: DVLNI

1.8 Vehicles currently licensed by body code: 2004

At 31 December

Code	Description	No.	Code	Description	No.
1	2 door saloon	3794	52	Skip loader	229
2	4 door saloon	121517	53	Special mobile unit	42
3	Saloon	16199	54	Landrover/Jeep	7074
4	Convertible	5552	55	Airport support unit	7
5	Coupe	15417	56	Single decker bus/coach	2223
6	Estate	81055	57	Double decker bus/coach	106
7	Taxi	538	58	Standee bus	9
8	Invalid vehicle	46	59	Half decker bus/coach	18
9	Tricycle	96	60	Minibus	3078
10	Goods tricycle	1	61	Curtain Sided	320
11	Hearse	151	62	Tourer	117
12	Limousine	320	63	Agricultural tractor	11017
13	3 door saloon	167826	64	Combine harvester	40
14	5 door saloon	303936	65	Root crop harvester	3
15	Moped	106	66	Forage harvester	38
16	Scooter	3008	68	Sprayer	13
17	Scooter combination	62	69	Viner/Picker	3
18	Motorcycle	20469	70	Agricultural machine	408
19	M/C combination	24	71	Mowing machine	144
20	PCV	50	72	Moped	3606
21	Sports	2106	73	Road surfacer	19
22	Panel van	32819	74	Road tester	2
23	Box van	6777	75	Tractor	321
24	Car derived van	11677	76	Ambulance	479
25	Light van	647	77	Fire engine	199
26	Pickup	4961	78	Bull dozer	6
27	Motor caravan	1838	79	Road Stripper	0
28	Van/Side windows	286	80	Tar sprayer	18
29	Light goods	45	81	Line painter	14
30	Pantechnicon	15	82	Line roller	273
31	Luton van	306	83	Street cleansing	319
32	Insulated van	881	84	Gritting vehicle	180
33	Glass carrier	27	85	Tower wagon	92
34	Specially fitted van	65	86	Crane	178
35	Van	12260	87	Lift truck	304
36	Livestock carrier	384	88	Snow plough	22
37	Float	61	89	Loading shovel	155
38	Flat lorry	1691	90	Rear digger	486
39	Dropside lorry	1020	91	Station tractor	3
40	Tipper	4606	92	Tractor excavator	57
41	Low loader	50	93	Hydraulic excavator	72
42	Truck	126	94	Cesspool emptier	4
43	Breakdown truck	305	95	Skeletal goods	15
44	Tanker	945	96	MPV	18716
45	Solid bulk carrier	64	98	Not recorded	417
46	Concrete mixer	385	99	Special purpose	231
47	Mobile plant	18	A1	Fwd Reach Tel Handle	117
48	Car transporter	72	A2	Mobile Pupm	1
49	Refuse disposal	487		Other	0
50	Goods	6831			
51	Front Dumper	144			
					Total 883261

Source: DVLNI

1.9 Vehicles currently licensed by body code: 2004

Alfa Romeo		BMW		Daimler	
145 / 146	138	Z3	278	Other	60
147	328	Other	4029	Total	149
155 / 156	896	Total	23692	Datsun	
166	42	Carbodies		Total	11
GTV	101	Total	366	Dennis	
Spider	36	Chevrolet		Total	30
Other	554	Total	35	Dodge	
Total	2095	Chrysler		Total	6
Aston Martin		Cruiser	225	Ferrari	
Total	33	Neon	226	Total	51
Audi		Voyager /Grand Voyager	703	Fiat	
80	2056	Other	332	Brava	624
90	56	Total	1486	Bravo	453
100	374	Citroen		Cinquecento	462
A2	263	2CV	28	Coupe	60
A3	1562	AX	1944	Croma	0
A4	7931	Berlingo	2410	Doblo	160
A6	1865	BX	170	Ducato	925
A8	82	C15/ C25	471	Fiorino	48
Coupe	133	C5	915	Marea	242
TT	405	Dispatch	409	Multipla	317
Other	1880	Relay	616	Panda	55
Total	16607	Saxo	6418	Punto	5135
Austin / Leyland / Morris /		Synergie	577	Scudo	263
Rover / Triumph		Visa	1	Seicento	460
100 Series	1861	Xantia	3313	Tempra	60
200 Series	8841	XM	105	Tipo	122
400 Series	5410	Xsara	5605	Ulysse	208
600 Series	1766	ZX	2740	Uno	320
800 Series	276	Other	7216	Other	2680
Acclaim	6	Total	32938	Total	12594
Defender	2353	Colt		Ford / Iveco Ford	
Discovery	2332	Total	20	Capri	98
Freelander	2073	Daewoo		Cortina	23
Land Rover	1660	Espero	94	Cougar	121
Maestro	68	Lanos	510	Courier	157
Metro	1173	Leganza	84	Escort	10901
MG Midget / MGB	182	Matiz	685	Explorer	23
MGF	340	Musso	14	Fiesta	24675
MG ZR	713	Nexia	267	Focus	12105
MG ZS	91	Nubira	176	Galaxy	1823
MG ZT	50	Tacuma	156	Granada	203
Mini	3107	Other	315	Ka	5595
Montego	39	Total	2301	Maverick	325
Range Rover	877	Daihatsu		Mondeo	13935
Rover 25	2839	Applause	12	Orion	264
Rover 45	989	Charade	313	Probe	96
Rover 75	1529	Charmant	3	Puma	650
Sherpa	14	Cuore	147	Ranger	129
Sterling	32	Domino	6	Scorpio	145
Vitesse	10	Fourtrak	1443	Sierra / Sapphire	708
Other	3057	HiJet	97	Transit	15344
Total	41688	Move / Grand Move	75	Other	10685
Bentley		Sirion	103	Total	98005
Total	49	Sportrak	110	Honda	
BMW		Terios	464	Accord	2395
3 - Series	14047	YRV	328	Ballade	3
5 - Series	3920	Other	257	Civic	6437
7 - Series	480	Total	3358	Concerto	118
8 Series	28	Daimler		CR-V	823
M3 / M5	381	Limousine	83	CRX	46
X5	529	Sovereign	6	HRV	264
				Integra	25

1.9 Cont'd

Honda		LDV		Mitsubishi	
Legend	80	Total	1211	Space Runner	16
Prelude	287	Lexus		Space Star	307
Shuttle	42	GS300	174	Space Wagon	452
Other	2957	IS200	504	Other	3688
Total	13477	LS400	111	Total	10970
Hyundai		Other	301	Morgan	
Accent	4964	Total	1090	Total	26
Amica	530	Lotus		Nissan	
Atoz	247	Total	87	100NX	83
Coupe	791	Maserati		200SX	52
Elantra	304	Total	28	Almera	4837
Lantra	1152	Mazda		Bluebird	173
Matrix	421	121	266	Cabstar	280
Pony	247	323	3457	Cherry	8
S - Coupe	25	626	1964	D21 / D22	387
Santa Fe	483	B Series	94	Maxima	41
Sonata	212	Demio	359	Micra	8604
Stellar	2	E Series	128	Patrol	390
Trajet	269	MX-3	127	Prairie	14
XG	16	MX-5	823	Primera	6132
Other	2201	MX-6	25	Serena	435
Total	11864	Premacy	337	Stanza	2
Isuzu		Tribute	31	Sunny	1409
Trooper	2488	Xedos	75	Terrano	2454
Other	1016	Other	2998	Urvan	91
Total	3504	Total	10684	Vanette	1036
Jaguar		Mercedes		X Trail	384
S Type	589	190	828	Other	6012
Sovereign	116	200	667	Total	32824
X Type	660	220	40	Peugeot	
XJ Executive	41	230	208	106	11012
XJ Sport	122	240	19	205	2296
XJ6	243	250	166	206	12632
XJ8	138	260	35	305	246
XJR	25	280	76	306	15098
XJS	80	300	933	307	3114
XK8	71	320, 350, 380	46	309	692
XKR	14	400, 420, 450	59	405	3606
Other	536	500, 560, 600	68	406	9363
Total	2635	A Class	927	504	62
Jeep		C Class	5187	505	34
Cherokee	805	CL Class	62	605	53
Wrangler	37	CLK Class	617	607	135
Other	255	E Class	3348	806	186
Total	1097	ML Class	608	Boxer	607
Kia		S Class	365	Expert	209
Carens	53	SL Class	116	Partner	701
Mentor	357	SLK Class	285	Other	9226
Pride	391	Sprinter	1598	Total	69272
Rio	215	V Class	24	Porsche	
Sedona	252	Vito	833	911	302
Shuma	88	Other	2870	924	29
Sportage	96	Total	19985	928	20
Other	564	Mitsubishi		944	97
Total	2016	Canter	35	968	18
Lada		Carisma	1602	Boxster	175
Riva	23	Challenger	113	Carrera	21
Samara	14	Colt	705	Other	281
Other	4	Galant	342	Total	943
Total	41	L200, L300	1060	Proton	
Lancia		Lancer	74	GE, GL, GLS	479
Total	9	Shogun	2576	Persona	1211

1.9 Con't

Proton		Subaru		Vauxhall / Opel / Bedford	
Satria	33	Legacy	241	Corsa	23475
SE, SL	139	Sumo	6	Frontera	863
Wira	195	Vivio	40	Manta	16
Other	141	Other	712	Midi	64
Total	2198	Total	2005	Monterey	25
Renault		Suzuki/Suzuki (Spain)		Movano	178
5	680	Alto	396	Nova	1219
9	31	Baleno	578	Omega	1122
11	29	Carry	77	Rascal	13
18	24	Ignis	290	Senator	34
19	2184	Jimny	261	Sintra	31
21	512	Liana	165	Tigra	420
25	44	Swift	749	Vectra	11257
Clio	32004	Vitara / Grand Vitara	1762	Viva	421
Espace	1190	Wagon R+	228	VX	9
Extra	894	Other	1125	Zafira	2192
Kangoo	1130	Total	5631	Other	12502
Laguna	8751	Talbot		Total	84530
Master	687	Express	156	Volkswagen	
Megane	16633	Samba	3	Beetle	1168
Safrane	132	Sunbeam	7	Bora	2654
Scenic	4	Other	38	Caddy	1590
Trafic	1023	Total	204	Caravelle	148
Other	15487	Tata		Corrado	76
Total	81439	Total	39	Golf	17572
Reliant		Toyota		Jetta	160
Total	14	4 Runner	27	LT	814
Rolls Royce		Avensis	5266	Lupo	479
Total	53	Camry	268	Passat	11534
Saab		Carina	5543	Polo	13495
9-3	613	Celica	1318	Sharan	1144
9-5	541	Corolla	11788	Sirocco	71
900	511	Corona	40	Transporter	1015
9000	283	Hiace/Hilux	3138	Vento	613
Other	832	Land Cruiser	1493	Other	9052
Total	2780	Liteace	123	Total	61585
Seat		MR2	504	Volvo	
Alhambra	1313	Paeso	72	200 Series	142
Arosa	494	Picnic	535	300 Series	71
Cordoba	840	Previa	268	400 Series	1293
Ibiza	4724	RAV 4	1628	700 Series	330
Inca	1106	Space Cruiser	33	850 / 855	504
Leon	1439	Starlet	1387	940 / 960	532
Marbella	36	Supra	77	C70	71
Terra	3	Tercel	2	S40 / V40	1673
Toledo	1826	Yaris	3236	S60	227
Other	2746	Other	10481	S70 / V70	794
Total	14527	Total	47227	S80	273
Skoda		TVR		S90/V90	7
Fabia	1229	Total	50	Other	1739
Favorit	128	Vauxhall / Opel / Bedford		Total	7656
Felicia	1519	Agila	197	Zastava	
Octavia	1900	Arena	25	Total	2
Other	1235	Astra	20937	Miscellaneous	
Total	6011	Bedford	0	Total	3864
Ssangyong		Belmont	11	GRAND Total	
Total	106	Brava	91		
Subaru		Calibra	286		
1.6/1.8	15	Carlton / Rekord	128		
Forester	119	Cavalier	7214		
Impreza	753	Chevette / Kadett	24		
Justy	119	Combo	1776		

Source: DVLNI

1.10 20 Most popular Private and Light Goods vehicles in NI: 2004

		At 31 December	
	Make and model	Number	%
1	Renault Clio	32004	4.3
2	Ford Feista	24675	3.3
3	Vauxhall Corsa	23475	3.2
4	Vauxhall Astra	20937	2.8
5	Volkswagen Golf	17572	2.4
6	Renault Megane	16633	2.3
7	Renault Other	15487	2.1
8	Ford Transit	15344	2.1
9	Peugeot 306	15098	2.0
10	BMW 3 Series	14047	1.9
11	Ford Mondeo	13935	1.9
12	Volkswagen Polo	13495	1.8
13	Peugeot 206	12632	1.7
14	Vauxhall Other	12502	1.7
15	Ford Focus	12105	1.6
16	Toyota Corolla	11788	1.6
17	Volkswagen Passat	11534	1.6
18	Vauxhall Vectra	11257	1.5
19	Peugeot 106	11012	1.5
20	Ford Escort	10901	1.5
Total private and light goods		737198	100

Source: DVLNI

1.11 Motor vehicles registered for the first time in NI by vehicle type: 2000-2004

Vehicle type	Number				
	2000	2001	2002	2003	2004
Private cars					
New cars PLG	63170	68339	64934	65464	59869
New cars exempt - Govt owned	20	22	17	15	9
New cars exempt - Non Govt owned	8802	8943	9260	8561	9496
Used cars PLG	21803	20253	18468	22042	25321
Used cars exempt - Govt owned	0	3	3	0	0
Used cars exempt - Non Govt owned	1223	1229	1184	1292	1363
Total private cars	95018	98789	93866	97374	96058
Buses	565	451	439	609	467
Light goods					
Light goods	12617	13274	12007	11492	11090
Light goods exempt - Govt owned	190	246	287	164	146
Light goods exempt - Non Govt owned	216	243	177	198	201
Total light goods	13023	13763	12471	11854	11437
Heavy goods					
Heavy goods	3502	4534	3669	4059	3987
Heavy goods exempt - Govt owned	86	33	46	68	76
Heavy goods exempt - Non Govt owned	24	22	28	62	58
Total heavy goods	3612	4589	3743	4189	4121
Tractors					
Tractors	1313	301	1	9	2
Tractors exempt - Govt Owned	9	19	20	13	15
Tractors exempt - Non Govt owned	94	861	1390	1450	1412
Total tractors	1416	1181	1411	1472	1429
Motor cycles					
Motor cycles	6010	5591	5596	6804	4601
Motor cycles exempt - Govt owned	23	13	13	5	2
Motor cycles exempt - Non Govt owned	66	74	90	79	103
Total motor cycles	6099	5678	5699	6888	4706
Other exempt	36	418	0	0	0
Other non exempt	0	0	0	0	0
General Haulage and Special Types	0	0	15	12	11
Total all vehicles	119769	124869	117644	122398	118229

Source: DVLNI

1.12 Cars registered for the first time in NI by make: 2004

At 31 December

Make	New (includes exempt and imports)	Used		Total
		Imported from GB and/or exempt (includes NI re-registrations)	Imported from outside UK	
Alfa Romeo	150	127	6	283
Audi	1467	975	11	2453
Austin	0	56	1	57
BMW	2554	1643	26	4223
Carbodies	0	66	0	66
Chrysler	244	35	2	281
Citroen	2735	847	9	3591
Daewoo	455	52	2	509
Daihatsu	215	32	2	249
Daimler	0	16	2	18
Eunos	0	0	0	0
Ferrari	5	12	2	19
Fiat	1096	369	14	1479
Ford	8421	2545	53	11019
Honda	1380	463	20	1863
Hyundai	2021	170	4	2195
Isuzu	107	32	5	144
Jaguar	489	105	2	596
Jeep	187	44	1	232
Kia	615	94	1	710
Land Rover	817	232	11	1060
Lexus	135	92	5	232
Lotus	1	16	0	17
Maserati	9	0	0	9
Mazda	1483	130	27	1640
Mercedes	1773	1300	21	3094
MG	416	100	3	519
Mini	846	73	1	920
Mitsubishi	892	171	114	1177
Nissan	3379	542	28	3949
Opel	113	24	12	149
Peugeot	5168	2689	19	7876
Porsche	173	63	4	240
Proton	45	15	0	60
Renault	9045	2159	21	11225
Rolls Royce	1	11	0	12
Rover	1083	674	13	1770
Saab	371	118	8	497
Seat	1382	537	9	1928
Skoda	964	232	5	1201
Ssangyong	10	0	0	10
Subaru	244	89	57	390
Suzuki	1178	69	1	1248
Toyota	4389	1304	122	5815
Triumph	0	23	1	24
Vauxhall	6825	3881	12	10718
Volkswagen	5617	3122	42	8781
Volvo	623	358	10	991
Other	251	230	38	519
Totals	69374	25937	747	96058

Source: DVLNI

1.13 Light goods registered for the first time in NI by make: 2004

At 31 December

Make	New	Used	Exempt		Total
			Government owned	Non government owned	
Austin	0	1	0	2	3
Bedford	1	1	0	1	3
Chevrolet GMC	0	0	0	0	0
Chrysler	0	0	0	0	0
Citroen	455	512	2	2	971
Daf	0	0	0	0	0
Daihatsu	2	4	0	0	6
Fiat	108	57	1	14	180
Ford	1930	1438	4	57	3429
Freight Rover	0	0	0	0	0
Honda	0	1	0	2	3
Hyundai	0	0	0	0	0
Isuzu	241	26	0	0	267
Iveco	137	71	42	0	250
Iveco Ford	0	0	0	0	0
Iveco-Ford (UK)	4	1	2	0	7
Land Rover	212	15	11	12	250
LDV	33	42	7	10	92
Leyland	0	0	0	0	0
Leyland Daf	0	4	0	0	4
Mazda	47	10	0	0	57
Mercedes	579	175	0	4	758
Mitsubishi	342	40	0	2	384
Nissan	605	74	0	6	685
Opel	44	17	0	0	61
Peugeot	335	278	0	9	622
Renault	690	205	46	23	964
Rover	3	2	0	0	5
Seat	33	38	0	0	71
Skoda	0	5	0	0	5
Subaru	2	0	0	0	2
Suzuki	10	1	0	0	11
Talbot	0	1	0	0	1
Tata	4	2	0	0	6
Toyota	314	117	0	6	437
Vauxhall	595	212	3	10	820
Volkswagen	801	172	0	15	988
Volvo	0	0	10	1	11
Other	36	5	18	25	84
Totals	7563	3527	146	201	11437

Source: DVLNI

1.14 Heavy goods registered for the first time in NI by make: 2004

At 31 December

Make	New	Used	Exempt		Total
			Government owned	Non government owned	
All Wheel Drive	0	0	0	0	0
Bedford	0	3	0	0	3
Case	3	0	0	0	3
Caterpillar	12	0	0	0	12
Daf	316	97	0	3	416
Dennis	20	7	0	0	27
Dodge	0	0	0	0	0
ERF	27	39	0	0	66
Foden	10	32	0	0	42
Ford	12	15	0	0	27
Grove Coles	0	2	0	0	2
Hino	19	17	0	0	36
Isuzu	21	8	0	0	29
Iveco	122	36	24	2	184
Iveco Ford	2	192	1	0	195
Iveco-Ford (German)	0	0	0	0	0
Iveco-Ford (Italy)	0	0	0	0	0
Iveco-Ford (UK)	106	21	41	4	172
JCB	28	24	3	2	57
Johnston	2	0	0	0	2
Kato	0	7	0	0	7
Krupp	0	0	0	0	0
LDV	28	2	0	5	35
Leyland	0	48	0	0	48
Leyland Daf	4	321	0	0	325
MAN	80	233	0	0	313
MAN/VW	0	2	0	0	2
Manitou	7	3	0	3	13
Massey Ferguson	0	0	0	0	0
Matbro	0	0	0	0	0
Mercedes	248	242	0	21	511
Merlo	4	0	0	0	4
Mitsubishi	18	21	0	0	39
New Holland	0	0	0	0	0
Nissan	0	0	0	0	0
PPM	0	0	0	0	0
Renault	2	125	0	0	127
Renault (UK)	106	4	0	0	110
Scania	112	339	0	0	451
Seddon/Atkinson	20	16	0	0	36
Thwaites	2	1	0	0	3
Toyota	1	2	0	0	3
Volkswagen	8	1	0	0	9
Volvo	176	519	4	13	712
Other	67	25	3	5	100
Totals	1583	2404	76	58	4121

Source: DVLNI

1.15 Car¹ ownership levels in NI and GB²: 2000-01 to 2004-05

Percentage

	Percentage of households owning a car					
	One only		Two or more		Total	
	NI	GBr	NI	GBr	NI	GB
2000-01	45	45	26	28	70	73
2001-02	46	45	27	29	73	74
2002-03	45	44	28	29	73	74
2003-04p	43	44	31	30	74	74
2004-05p	43	:	33	:	75	:

1 Includes cars and light vans.

2 Figures for Great Britain relate to calendar years whereas figures for Northern Ireland are for financial years.

Sources: GB - ONS, DFT;
NI - NISRA Continuous Household Survey

1.16 PLG vehicles per 1000 population aged over 16 years: NI/GB comparison 2000-04

	Number	
	NI	GB
2000	491	562 ¹
2001	510	579 ²
2002	522	605 ³
2003	553	560 ⁴
2004	567	626 ⁵

1 Based on Mid-2000 Population estimates.

2 Based on Mid-2001 Population estimates.

3 Based on Census Population 2001.

4 Based on Mid-2002 year estimates.

5 Based on Mid-2003 year estimates.

Sources: GB - ONS,
DFT; NI - NISRA

Chapter 2

Driver and Vehicle Testing

2.1 Motor vehicle testing scheme: 2000-01 to 2004-05

	Number/percentage				
	2000-01	2001-02	2002-03r	2003-04	2004-05
Tests completed	367286	386768	405943	433690	473771
Retests	69473	74729	84091	93562	133668
Percentage retests	19	19	21	22	28

Source: DVTA

2.2 Passenger service vehicle testing scheme: 2000-01 to 2004-05

	Number/percentage				
	2000-01	2001-02	2002-03r	2003-04	2004-05
Tests completed	11540	11130	11162	12095	13188
Retests	2986	2962	3119	3578	3865
Percentage retests	26	27	28	30	29

Source: DVTA

2.3 Goods vehicle testing scheme: 2000-01 to 2004-05

	Number/percentage				
	2000-01	2001-02	2002-03r	2003-04	2004-05
Tests completed	60920	65488	66671	70315	63560
Retests	13973	14763	16522	22964	19068
Percentage retests	23	23	25	33	30

Source: DVTA

2.4 'L' driving tests, NI/GB comparison: 2000-01 to 2004-05

	Number/percentage									
	2000-01		2001-02		2002-03		2003-04		2004-05	
	NI	GB	NI	GB	NI	GB	NI	GB	NI	GB
Tests conducted										
Male	18602	516778	20433	575787	19135	643880	21070	656771	18823	807898
Female	18747	576438	20741	631695	20625	705412	24425	742243	21498	867924
All	37349	1093216	41174	1207482	39760	1349292	45495	1399014	40321	1675822
Tests passed										
Male	10475	248148	10021	271502	9827	299551	11015	303744	9986	368003
Female	9062	232070	9557	252277	8788	283218	10276	294440	9222	341345
All	19537	480218	19578	523779	18615	582769	21291	598184	19208	709348
Percentage passed										
Male	56	48	49	47	51	47	52	46	53	46
Female	48	40	46	40	43	40	42	40	43	39
All	52	44	48	43	47	43	47	43	48	42

Sources: NI - DVTA; GB - DSA

2.5 Written theory tests for private car drivers, NI/GB comparison: 2000-01 to 2004-05

	Number/percentage									
	2000-01		2001-02		2002-03		2003-04		2004-05	
	NI	GB	NI	GB	NI	GB	NI	GB	NI	GB
Tests conducted										
Male	18145	525450	17644	561160	20119	666697	20854	692421	20957	674028
Female	14689	463938	14890	498450	17766	608929	17096	605175	18280	580896
All	32834	989388	32534	1059610	37885	1275626	37950	1297596	39237	1254924
Tests passed										
Male	11615	312045	11324	338960	12548	381735	11455	374166	13341	408705
Female	10873	313946	11069	343808	13005	404358	10582	370424	13297	398769
All	22488	625991	22393	682768	25553	786093	22037	744590	26638	807474
Percentage passed										
Male	64	59	64	60	62	57	55	54	64	61
Female	74	68	74	69	73	66	62	61	73	69
All	68	63	69	64	67	62	58	57	68	64

Sources: NI - DVTA; GB - DSA

2.6 Motorcycle 'L' driving tests, NI/GB comparison: 2000-01 to 2004-05

	Number/percentage									
	2000-01		2001-02		2002-03		2003-04		2004-05	
	NI	GB	NI	GB	NI	GB	NI	GB	NI	GB
Tests conducted										
Male	2819	78937	3727	66847	3625	73944	1542	70641	1608	66682
Female	256	11725	375	10385	404	12267	266	12782	205	11559
All	3075	90662	4102	77232	4029	86211	1808	83423	1813	78241
Tests passed										
Male	1999	53492	2553	45043	2489	49087	1074	46951	1164	44139
Female	166	6521	254	5722	255	6616	184	6818	164	6154
All	2165	60013	2807	50765	2744	55703	1258	53769	1328	50293
Percentage passed										
Male	71	68	69	67	69	66	70	66	72	66
Female	65	56	68	55	63	54	69	53	80	53
All	70	66	68	66	68	65	70	64	73	64

Sources: NI - DVTA; GB - DSA

2.7 Written theory tests for motorcyclists, NI/GB comparison: 2000-01 to 2004-05

	Number/percentage									
	2000-01		2001-02		2002-03		2003-04		2004-05	
	NI	GB	NI	GB	NI	GB	NI	GB	NI	GB
Tests conducted										
Male	229	21098	281	72803	416	75422	2354	70764	1829	59532
Female	23	2964	21	10821	32	12116	356	11115	244	8996
All	252	24062	302	83624	448	87538	2710	81879	2073	68528
Tests passed										
Male	140	14634	180	59262	257	60118	1661	54393	1536	50696
Female	15	2286	14	9432	29	10279	280	9062	206	8051
All	155	16920	194	68694	286	70397	1941	63455	1742	58747
Percentage passed										
Male	61	69	64	81	62	80	71	77	84	85
Female	65	77	67	87	91	85	79	82	84	89
All	61	70	64	82	64	80	72	77	84	86

Sources: NI - DVTA; GB - DSA

2.8 Goods Vehicle (GV) and Passenger Carrying Vehicle (PCV) driving tests, NI/GB comparison: 2000-01 to 2004-05

	Number/percentage									
	2000-01		2001-02		2002-03		2003-04		2004-05	
	NI	GB	NI	GB	NI	GB	NI	GB	NI	GB
Tests conducted										
Male	1180	60662	1310	58985	1262	68116	1343	72759	2226	86836
Female	25	2746	84	2686	63	3644	72	2865	109	5269
All	1205	63408	1394	61671	1325	71760	1415	75624	2335	92105
Tests passed										
Male	744	31645	759	29325	782	33309	837	35235	1490	40088
Female	16	1353	42	1202	35	1601	53	1811	60	2404
All	760	32998	801	30527	817	34910	890	37046	1550	42492
Percentage passed										
Male	63	52	58	50	62	49	62	48	67	46
Female	64	49	50	45	56	44	74	63	55	46
All	63	52	57	49	62	49	63	49	66	46

Sources: NI-DVTA; GB-DSA

2.9 Goods Vehicle (GV) and Passenger Carrying Vehicle (PCV) driving tests (NI) by type: 2000-01 to 2004-05

	Number/percentage									
	2000-01		2001-02		2002-03		2003-04		2004-05	
	GV	PCV	GV	PCV	GV	PCV	GV	PCV	GV	PCV
Tests conducted										
Male	839	341	859	451	798	464	884	459	1777	449
Female	8	17	11	73	19	44	19	53	51	58
All	847	358	870	524	817	508	903	512	1828	507
Tests passed										
Male	532	212	509	250	512	270	542	295	1199	291
Female	7	9	7	35	9	26	12	41	27	33
All	539	221	516	285	521	296	554	336	1226	324
Percentage passed										
Male	63	62	59	55	64	58	61	64	67	65
Female	87	53	64	48	47	59	63	77	53	57
All	64	62	59	54	64	58	61	66	67	64

Source: DVTA

2.10 Ordinary licences issued by type: 2000-01 to 2004-05

Ordinary licences	Number/Percentage									
	2000-01		2001-02		2002-03		2003-04		2004-05	
	No.	%	No.	%	No.	%	No.	%	No.	%
Provisional licences	27454	23	28980	21	27215	19	30905	20	25561	16
Full licences	49062	40	55968	41	56976	39	62132	39	77144	49
Replacement licences ¹	26414	22	33153	24	41176	29	44729	28	38748	24
Conversion prov. to full	18296	15	19199	14	19215	13	21346	13	18028	11
Totals	121226	100	137300	100	144582	100	159112	100	159481	100

¹ E.g. duplicates, to remove endorsements, change of address or surname.

Source: DVLNI

2.11 Vocational licences issued by type: 2000-01 to 2004-05

Vocational licences	Number/Percentage									
	2000-01		2001-02		2002-03		2003-04		2004-05	
	No.	%	No.	%	No.	%	No.	%	No.	%
Passenger carrying vehicles	1531	19	2366	18	1773	15	1411	12	1315	14
Large goods vehicles	2780	34	6562	50	6168	51	6178	51	3538	38
Replacement licences ¹	2562	31	2722	21	2870	24	3087	25	3144	34
Conversion prov. to full	1314	16	1403	11	1349	11	1432	12	1317	14
Totals	8187	100	13053	100	12160	100	12108	100	9314	100

¹ E.g. duplicates, to remove endorsements, change of address or surname.

Source: DVLNI

Chapter 3

Road Network

3.1 NI public road lengths by type of road: 2001-2005¹

Units as indicated

Northern Ireland	1.4.01		1.4.02		1.4.03		1.4.04		1.4.05	
	000 km	%	000 km	%	000 km	%	000 km	%	000 km	%
Motorways ²	0.11	0.44	0.11	0.46	0.11	0.46	0.11	0.44	0.11	0.46
Class I Dual Carriageway	0.16	0.65	0.15	0.60	0.15	0.60	0.15	0.60	0.16	0.63
Class I Single Carriageway	2.12	8.57	2.12	8.54	2.11	8.51	2.11	8.48	2.11	8.48
Class II	2.87	11.59	2.87	11.57	2.87	11.55	2.88	11.58	2.88	11.55
Class III	4.71	19.03	4.70	18.98	4.71	18.95	4.70	18.90	4.70	18.86
Unclassified	14.78	59.72	14.83	59.84	14.87	59.95	14.93	60.00	14.96	60.02
Total	24.75	100.00	24.79	100.00	24.82	100.00	24.88	100.00	24.93	100.00

1 The figures in this table are a snapshot of the Roads Maintenance Client System - April 2005.

Source: DRD Roads Service

2 Excludes slip-road lengths

3.2 Road Network Summary Lengths - All Divisions¹

Km

Road Class	Carriageway Class	Urban Length (carriageway)	Rural Length (carriageway)	Total (carriageway length)	Total Route Length
Motorway ²	Motorway	29.2	199.3	228.5	114.3
Motorway	Single				
Class I	Dual	104.7	207.4	312.1	156.0
Class I	Single	490.0	1624.4	2114.4	2114.4
Class II	Dual	1.8	2.9	4.8	2.4
Class II	Single	371.4	2506.1	2877.5	2877.5
Class III	Dual	2.5	0.0	2.5	1.3
Class III	Single	284.0	4416.7	4700.8	4700.8
Unclassified	Dual	2.6	0.0	2.6	1.3
Unclassified	Single	3858.5	11105.0	14963.5	14963.5
Total ^{3,4,5}		5144.8	20061.9	25206.6	24931.4

1 The figures in this table are a snapshot of the Roads Maintenance Client System - April 2005.

Source: DRD Roads Service

2 Motorway figures exclude slip road lengths.

3 Stretches for car parks and footpaths are not included in these figures.

4 Road lengths recorded here are for adopted roads only.

5 On Motorways and Dual Carriageways: 2 Carriageway Km = 1 Route Km.

3.3 NI public road lengths by local government district and Roads Service division by type of road: 2005^{2,3}

Local government district/ Roads Service division	Class I			Class II	Class III	Unclassified	Totals
	Motorway ¹	Dual c'way	Single c'way				
Antrim	20.3	8.8	76.5	82.0	176.6	436.0	800.2
Ballymena	6.5	18.9	76.9	130.6	192.6	561.1	986.6
Ballymoney	0.0	0.0	31.8	121.0	116.9	286.5	556.2
Coleraine	0.0	4.4	110.9	124.8	119.9	481.0	841.0
Larne	0.0	6.2	70.3	75.6	96.7	231.4	480.2
Limavady	0.0	0.0	76.5	109.0	92.3	372.0	649.9
Londonderry	0.0	7.5	62.0	69.5	144.0	592.5	875.6
Moyle	0.0	0.0	78.5	100.4	113.1	229.4	521.4
Total Northern Division	26.8	45.9	583.3	812.9	1052.2	3190.0	5711.1
Ards	0.0	9.1	119.8	28.9	131.5	467.8	757.1
Armagh	0.0	0.1	130.5	202.3	331.0	1054.9	1718.8
Banbridge	0.0	21.5	55.7	95.2	228.2	615.1	1015.7
Craigavon	23.2	4.3	55.5	100.7	134.9	483.2	801.9
Down	0.0	0.0	163.4	108.2	228.8	642.2	1142.5
Newry & Mourne	0.0	11.2	153.2	168.3	343.6	1034.4	1710.8
Total Southern Division	23.2	46.4	678.1	703.6	1397.9	4297.6	7146.8
Belfast	12.0	14.1	80.8	43.5	22.2	694.5	867.1
Carrickfergus	0.0	1.3	15.6	30.3	18.7	149.4	215.2
Castlereagh	0.0	9.9	25.5	7.8	40.1	268.6	351.9
Lisburn	25.6	10.2	95.4	140.4	198.3	675.5	1145.4
Newtownabbey	15.0	2.7	31.6	66.7	66.2	319.6	501.9
North Down	0.0	18.0	12.5	29.9	30.9	263.7	355.0
Total Eastern Division	52.6	56.2	261.3	318.6	376.4	2371.3	3436.5
Cookstown	0.0	3.9	31.9	134.5	197.7	524.5	892.4
Dungannon	11.6	1.6	116.7	166.3	329.9	909.4	1535.5
Fermanagh	0.0	0.0	225.0	236.9	434.5	1160.7	2057.1
Magherafelt	0.0	2.1	97.9	96.0	169.7	554.2	919.9
Omagh	0.0	0.0	85.2	224.6	442.3	1120.0	1872.2
Strabane	0.0	0.0	34.9	186.5	301.5	837.1	1360.0
Total Western Division	11.6	7.6	591.6	1044.8	1875.5	5105.9	8637.0
Overall Total	114.2	156.0	2114.4	2879.9	4702.0	14964.8	24931.4

1 Excludes slip-road lengths.

2 Lengths are in route kilometres.

3 The figures in this table are a snapshot of the Roads Maintenance Client System - April 2005.

Source: DRD Roads
Service

3.4 Public expenditure on NI roads: 2000-01 to 2004-05

	Thousand £s				
	2000-01	2001-02	2002-03	2003-04	2004-05
New construction and improvement	40406	46380	51300	58800	106400
Maintenance					
Structural ¹	43569	51496	62700	79798	70424
Routine ²	23697	25416	26345	28632	28332
Winter ³	5678	5041	4543	4683	4947
Public lighting ⁴	9995	11372	11936	12392	12730
Total road expenditure ⁵	175968	192998	220764	251657	290337

1 Structural maintenance: reconstruction, overlay, resurfacing, surface dressing, patching, footways, bridges.

2 Routine maintenance: verge maintenance, sweeping, gullies, signals, signs, markings, drainage, earthworks, fences.

3 Winter maintenance: salting, snow clearance, snow fences.

4 Public lighting: maintenance and energy.

5 Includes other expenditure.

Source: DRD Roads Service

Chapter 4

Road Freight

4.1 Road freight licences: 2000-01 to 2004-05

	Number				
	2000-01	2001-02	2002-03	2003-04	2004-05
Operator licences					
National	398	343	545	594	541
International/National	1671	1944	1725	1887	1754
Total	2069	2287	2270	2481	2295
Vehicle licences					
National	564	622	572	697	586
International/National	5217	5601	5788	6091	5923
Total	5781	6223	6360	6788	6509

Source: DOE-RTLD

4.2 Licensed road service operators (buses and coaches): 2000-01 to 2004-05

	Number				
	2000-01	2001-02	2002-03	2003-04	2004-05
Operator licences					
National	27	37	37	43	33
International	82	112	96	105	109
Total	109	149	133	148	142
Vehicle licences					
National	65	66	67	102	91
International	2028	2144	2178	2191	2210
Total	2093	2210	2245	2293	2301

Source: DOE-RTLD

4.3 Freight transport by road: Goods lifted within Northern Ireland by goods vehicles over 3.5 tonnes: 2000-2004

Thousand tonnes

(a) By mode of working	2000	2001	2002	2003	2004
Mainly public haulage	18551	14425	22554	24318	30220
Mainly own account	27141	20664	25562	39214	30266
All modes	45692	35089	48116	63532	60486
(b) By gross weight of vehicle					
Rigid Vehicles					
Over 3.5 to 17 tonnes	7206	5869	5967	7284	5521
Over 17 to 25 tonnes	8365	3316	2647	2718	5047
Over 25 tonnes	9923	13595	21009	29573	25307
All rigids	25494	22779	29623	39575	35875
Articulated Vehicles					
Over 3.5 to 33 tonnes	2586	1670	1235	1229	1914
Over 33 tonnes	17612	10640	17258	22728	22697
All artics	20198	12310	18493	23957	24611
All Vehicles					
Over 3.5 to 25 tonnes	15865	9322	8733	10173	10800
Over 25 tonnes	29827	25768	39383	53358	49686
All weights	45692	35089	48116	63532	60486
(c) By commodity					
Food drink & tobacco	7359	5543	10731	10113	9484
Wood timber & cork	861	479	696	1718	1540
Fertilizer	520	408	311	817	1280
Crude minerals	15669	11537	16417	20945	24575
Ores	416	38	134	59	559
Crude materials	408	210	528	343	15
Coal & coke	691	621	588	567	1766
Petrol & products	2615	2150	3085	5401	2113
Chemicals	815	298	209	337	473
Building materials	5786	5806	7794	12085	7946
Iron & steel products	859	577	488	748	924
Other metal products	172	155	249	535	329
Machinery & transport equipment	1533	1000	492	1448	1480
Miscellaneous manufactures	1297	926	1401	2335	2197
Miscellaneous transactions	5714	4323	4993	6083	5807
All commodities	45692	35089	48116	63532	60486

Source: Continuing Survey of Road Goods Transport (NI): DFT

4.4 International road haulage by NI registered powered vehicles over 3.5 tonnes gross vehicle weight: Goods carried by type of transport and commodity - 2004

Units as indicated

Outward journey	Total traffic				of which: Hire or reward			
	Tonnes (Thousand)	%	Tonne-kms (Million)	%	Tonnes (Thousand)	%	Tonne-kms (Million)	%
0 Agricultural products	513	7	87	8	292	7	57	7
1 Foodstuffs	1143	15	209	20	940	21	188	22
2 Fuels	404	5	84	8	268	6	69	8
3 Petroleum products	242	3	39	4	115	3	21	2
4 Metal ore & waste	14	0	2	0	3	0	0	0
5 Metal products	321	4	48	5	215	5	36	4
6 Building materials	3241	44	246	23	1238	28	145	17
7 Fertilizers	-	-	-	-	-	-	-	-
8 Chemicals	133	2	31	3	126	3	31	4
9 Miscellaneous	861	12	183	17	716	16	155	19
of which:								
Machinery & engines	168	2	36	3	154	3	35	4
Leather & textiles	556	7	118	11	449	10	97	12
All unclassified	549	7	134	13	549	12	134	16
All commodities	7422	100	1062	100	4463	100	835	100

Inward journey	Total traffic				of which: Hire or reward			
	Tonnes (Thousand)	%	Tonne-kms (Million)	%	Tonnes (Thousand)	%	Tonne-kms (Million)	%
0 Agricultural products	274	9	47	8	252	11	45	9
1 Foodstuffs	395	13	93	16	331	15	87	18
2 Fuels	607	20	95	17	228	10	53	11
3 Petroleum products	21	1	8	1	3	0	8	2
4 Metal ore & waste	-	-	-	-	-	-	-	-
5 Metal products	39	1	7	1	39	2	7	1
6 Building materials	583	19	74	13	359	16	50	11
7 Fertilizers	17	1	3	1	17	1	3	1
8 Chemicals	62	2	13	2	62	3	13	3
9 Miscellaneous	542	18	121	21	451	21	101	21
of which:								
Machinery & engines	195	7	44	8	112	5	26	5
Leather & textiles	212	7	54	9	207	9	54	11
All unclassified	455	15	111	19	455	21	111	23
All commodities	2996	100	573	100	2198	100	478	100

Source: Continuing Survey of Roads Goods Transport (NI): DFT

4.5 International road haulage by NI registered powered vehicles over 3.5 tonnes gross vehicle weight: Goods carried by country of unloading / loading - 2004

Units as indicated

Country	Outward journey				Inward journey			
	Tonnes (Thousand)	%	Tonne-kms (Million)	%	Tonnes (Thousand)	%	Tonne-kms (Million)	%
European Community								
Austria	0	0	0	0	0	0	0	0
Belgium	5	0	6	1	12	0	8	1
Denmark	0	0	0	0	0	0	0	0
Germany	19	0	23	2	15	0	19	3
Finland	0	0	0	0	0	0	0	0
France	55	1	45	4	56	2	45	8
Greece	0	0	0	0	0	0	0	0
Irish Republic	7322	99	963	91	2909	97	495	86
Italy	9	0	19	2	5	0	6	1
Netherlands	11	0	6	1	0	0	0	0
Spain	0	0	0	0	0	0	0	0
Sweden	0	0	0	0	0	0	0	0
Portugal	0	0	0	0	0	0	0	0
Total	7422	100	1062	100	2996	100	573	100
All Countries	7422	100	1062	100	2996	100	573	100

Source: Continuing Survey of Roads Goods Transport (NI):DFT

4.6 Rail freight carried to NI from the ROI by commodity: 2000-2003

Commodity	Tonnes/percentage							
	2000		2001		2002		2003	
	000s tonnes	% of total	000s tonnes	% of total	000s tonnes	% of total	000s tonnes	% of total
Brewery products	17	23	22	32	25	33	19	53
Fertilizer	10	14	8	12	13	17	0	0
Containers	12	16	12	17	13	17	7	19
Cement	35	47	27	39	25	33	10	28
Totals	74	100	69	100	76	100	36	100

Please refer to guidance notes on Page 73

Source: Irish Rail

4.7 Rail freight carried from NI to the ROI by commodity: 2000-2003

Commodity	Tonnes/percentage							
	2000		2001		2002		2003	
	000s tonnes	% of total	000s tonnes	% of total	000s tonnes	% of total	000s tonnes	% of total
Brewery products	3	4	2	4	2	6	2	40
Fertilizer	49	86	44	88	26	76	0	0
Containers	5	10	4	8	6	18	3	60
Cement	0	0	0	0	0	0	0	0
Totals	57	100	50	100	34	100	5	100

Please refer to guidance notes on Page 73

Source: Irish Rail

4.8 Cargo handled at NI airports: 1995-2004

Year	Tonnes			
	Belfast International	Belfast City	City of Derry	Totals
1995	30276	1064	52	31392
1996	26929	1236	101	28266
1997	24838	1247	57	26142
1998	25275	1149	18	26442
1999	25773	773	540	27086
2000	30599	820	0	31419
2001	32130	509	413	33052
2002	29474	1058	168	30700
2003	29620	1177	0	30797
2004	32148	955	0	33103

Source: CAA

Chapter 5

Road Safety

5.1 Road traffic injury collisions by attribution: 1999-2004¹

Year	Number/percentage											
	1999		2000		2001		2002		2003		2004	
Mainly attributable to:	Number	%	Number	%	Number	%	Number	%	Number	%	Number	%
Drivers	6039	80	6750	80	6000	80	5513	81	4934	81	4596	81
Passengers/Pedestrians	794	10	809	10	663	9	616	9	515	8	442	8
Motor cyclists	125	2	213	3	204	3	211	3	207	3	222	4
Pedal cyclists	173	2	159	2	122	2	96	1	99	2	91	2
Road conditions	212	3	229	3	228	3	176	3	137	2	155	3
Vehicle defects	73	1	93	1	96	1	72	1	67	1	58	1
Other causes	146	2	135	2	141	2	125	2	117	2	93	2
Totals	7562	100	8388	100	7454	100	6809	100	6076	100	5657	100

¹ Due to the number of collisions, where responsibility was shared by more than one party, the sub-total may be more than the total number of collisions.

Source: PSNI

5.2 Vehicles involved in road traffic injury collisions: 1999-2004

Year	Number/percentage											
	1999		2000		2001		2002		2003		2004	
Type of vehicle	Number	%	Number	%	Number	%	Number	%	Number	%	Number	%
Motor cars ¹	11617	82	13010	82	11519	82	10500	82	9213	81	8631	81
Motor cycles	362	3	508	3	469	3	504	4	485	4	516	5
Pedal cycles	280	2	271	2	215	2	176	1	197	2	162	1
Goods vehicles	1371	10	1460	9	1343	10	1219	9	1047	9	1034	10
PCV's ²	278	2	308	2	275	2	250	2	239	2	155	1
Others ³	241	2	254	2	230	2	217	2	200	2	181	2
Totals	14149	100	15811	100	14051	100	12866	100	11381	100	10679	100

¹ From 1 January 1994 includes motor cars used as taxis.

² Includes coaches, buses and minibuses.

³ Includes motor caravans, tractors, invalid carriages, fire engines, black taxis etc.

Source: PSNI

5.3 Deaths and injuries caused due to road traffic injury collisions: 1994-2004

Units as indicated

Children				All ages			
Year	Killed	Seriously injured	Slightly injured	Killed	Seriously injured	Slightly injured	Total casualties
1994	24	299	1426	157	1648	10289	12094
1995	19	244	1456	144	1532	10049	11725
1996	15	270	1584	142	1599	10834	12575
1997	13	251	1442	144	1548	11006	12698
1998	18	236	1645	160	1538	11704	13402
1999	18	191	1537	141	1509	11799	13449
2000	13	221	1602	171	1786	12763	14720
2001	10	226	1343	148	1682	11312	13142
2002	13	181	1299	150	1526	10238	11914
2003	15	156	1058	150	1288	8887	10325
2004	11	140	951	147	1183	8177	9507

Source: PSNI

5.4 Road traffic injury collision deaths by road user by month: 2004

Number

Month	Driver	Passenger ¹	Pedestrian	Pedal cyclist	Motor cyclist	Total
January	9	4	1	0	1	15
February	6	9	2	0	0	17
March	1	0	2	0	1	4
April	12	4	3	1	3	23
May	5	2	1	0	4	12
June	7	1	0	0	5	13
July	5	2	3	0	0	10
August	3	5	1	0	3	12
September	4	1	2	0	3	10
October	0	4	2	1	1	8
November	3	1	0	0	1	5
December	9	3	6	0	0	18
Total	64	36	23	2	22	147

¹ Includes pillion passengers, pedal cycle passengers and passengers in 'other' vehicles.

Source: PSNI

5.5 Road traffic injury collision child deaths by road user by month: 2004

Month	Number			
	Pedestrian	Cyclist	Other	Totals
January	0	0	0	0
February	0	0	1	1
March	0	0	0	0
April	1	0	3	4
May	0	0	0	0
June	0	0	0	0
July	0	0	0	0
August	1	0	1	2
September	0	0	0	0
October	0	1	0	1
November	0	0	1	1
December	1	0	1	2
Total	3	1	7	11

Source: PSNI

5.6 Road traffic injury collisions per 100,000 population and per 10,000 vehicles, UK regions: 1995-2004

Year	Units as indicated							
	Per 100,000 population				Per 10,000 vehicles			
	NI	Eng	Scot	Wales	NI	Eng	Scot	Wales
1995r	412	421	324	356	111	94	87	87
1996r	427	433	315	356	111	93	82	81
1997r	430	439	327	354	105	92	82	79
1998r	446	435	325	346	108	90	80	75
1999r	450	428	302	341	105	87	72	72
2000r	498	425	298	328	115	84	69	69
2001r	441	414	290	326	97	80	65	66
2002r	400	398	283	332	85	76	61	65
2003r	355	382	274	332	71	71	58	63
2004 ¹	331	369	274	325	64	67	57	59

¹ GB collision rates per 100,000 population for 2004 were calculated using GB 2003 population figures.

Sources: NISRA, DFT (GB), PSNI

5.7 Road traffic injury collision deaths per 100,000 population and per 10,000 vehicles, UK regions: 1995-2004

Units as indicated

Year	Per 100,000 population				Per 10,000 vehicles			
	NI	Eng	Scot	Wales	NI	Eng	Scot	Wales
1995r	8.7	6.2	8.0	7.5	2.4	1.4	2.1	1.9
1996r	8.5	6.2	7.0	7.5	2.2	1.3	1.8	1.7
1997r	8.6	6.2	7.4	7.6	2.1	1.3	1.9	1.7
1998r	9.5	5.8	7.6	7.0	2.3	1.2	1.9	1.5
1999r	8.4	6.0	6.1	6.6	2.0	1.2	1.5	1.4
2000r	10.2	5.9	6.4	5.8	2.3	1.2	1.5	1.2
2001r	8.8	5.9	6.9	6.4	1.9	1.1	1.5	1.3
2002r	8.8	6.0	6.0	5.0	1.9	1.1	1.3	1.0
2003r	8.8	6.0	6.5	5.9	1.8	1.1	1.4	1.1
2004 ¹	8.6	5.4	6.1	6.8	1.7	1.0	1.2	1.2

1 GB fatality rates over 100,000 population for 2004 were calculated using GB 2003 figures.

Sources: NISRA, DFT (GB), PSNI

5.8 Road traffic injury collision casualties per 100,000 population and per 10,000 vehicles, UK regions: 1995-2004

Units as indicated

Year	Per 100,000 population				Per 10,000 vehicles			
	NI	Eng	Scot	Wales	NI	Eng	Scot	Wales
1995r	711	565	435	518	192	126	116	127
1996r	757	585	426	514	197	126	110	117
1997r	760	597	445	512	186	126	112	114
1998r	799	590	442	501	193	122	108	109
1999r	801	581	411	495	187	118	98	104
2000r	875	580	404	485	201	115	94	102
2001r	778	566	392	473	171	110	88	96
2002r	702	542	381	490	150	103	83	96
2003r	606	517	369	478	121	97	78	91
2004 ¹	558	499	364	466	108	91	75	85

1 GB casualty rates per 100,000 population for 2004 were calculated using GB 2003 population figures.

Sources: NISRA, DFT (GB), PSNI

Chapter 6

Public Transport

Ulsterbus/Citybus transport: 2000-01 to 2004-05

6.1 Vehicle stock

	Age/Number									
	2000-01		2001-02		2002-03		2003-04		2004-05	
	U/B	C/B	U/B	C/B	U/B	C/B	U/B	C/B	U/B	C/B
Average age of buses	12.0	8.2	11.9	8.5	12.8	9.3	11.6	6.9	12.6	7.0
Totals	1167	260	1206	267	1195	257	1240	244	1220	256

Source: Translink

6.2 Staff employed

	Number									
	2000-01		2001-02		2002-03		2003-04		2004-05	
	U/B	C/B	U/B	C/B	U/B	C/B	U/B	C/B	U/B	C/B
Total staff	2155	644	2206	647	2239	672	2276	661	2309	701

Source: Translink

6.3 Passenger journeys, bus miles and kilometres

	Millions									
	2000-01		2001-02		2002-03		2003-04		2004-05p	
	U/B	C/B	U/B	C/B	U/B	C/B	U/B	C/B	U/B	C/B
Passenger journeys	46.8	20.3	44.8	20.2	46.0	19.9	45.9	19.5	45.2	19.9
Bus miles	34.5	6.8	34.7	6.7	35.2	6.9	35.3	7.1	35.8	6.7
Bus kilometres	55.7	11.0	56.0	10.8	56.7	11.1	56.8	11.4	57.6	10.8

Source: Translink

6.4 Local Stage passenger receipts

	Millions £									
	2000-01		2001-02		2002-03		2003-04		2004-05	
	U/B	C/B	U/B	C/B	U/B	C/B	U/B	C/B	U/B	C/B
Receipts	55.0	17.1	57.2	17.9	60.9	18.5	64.8	19.6	68.4	21.3

Source: Translink

6.5 NI Rail service assets and staff: 2000-01 to 2004-05

	Number				
	2000-01	2001-02	2002-03	2003-04	2004-05
Route miles of track	211	211	211	211	211
Rolling stock:					
Locomotives	36	35	35	33	32
Passenger coaches	75	78	76	76	108
Stations:					
Passenger and parcel	22	22	22	22	22
Freight only	1	1	1	1	0
Staff employed:					
Total staff	720	734	772	788	811

Source: Translink

6.6 NI Rail service passenger journeys, miles, kilometres and receipts: 2000-01 to 2004-05

	Millions/£'000s				
	2000-01	2001-02	2002-03	2003-04	2004-05p
Passenger journeys (Millions)	5.9	6.2	6.3	6.9	6.9
Passenger miles (Millions)	141.1	148.9	146.8	144.7	139.9
Passenger kilometres (Millions)	227.1	239.7	236.3	233.0	225.2
Passenger receipts (£'000s)	14126	14987	15394	16759	17194

Source: Translink

6.7 NI Rail service parcels handled and parcel receipts: 2000-01 to 2004-05

	Thousands/£'000s				
	2000-01	2001-02	2002-03	2003-04	2004-05
Parcels forwarded (Thousands)	42	41	38	30	30
General parcels Etc. (Thousands)	83	82	78	66	40
General parcels Etc. Receipts (£'000s)	391	373	353	340	323

Source: Translink

Chapter 7

Air Transport

7.1 Total aircraft movements and air transport movements at NI airports¹: 1995-2004

Number								
	Belfast International		Belfast City		City Of Derry		NI Totals	
Year	Aircraft movements	Air transport movements	Aircraft movements	Air transport movements	Aircraft movements	Air transport movements	Aircraft movements	Air transport movements
1995	98266	36561	42574	32476	13067	4441	153907	73478
1996	92985	32802	40509	35135	10184	3803	143678	71740
1997	95009	32148	37592	32965	13035	3121	145636	68234
1998	96339	37158	37907	34221	12862	2740	147108	74119
1999	101552	42995	35781	33148	7682	2329	145015	78472
2000	97563	41256	36773	33050	10894	3261	145230	77567
2001	95354	45706	35158	32494	11554	4736	142066	82936
2002	79376	38453	40027	37072	9830	4340	129233	79865
2003	79394	39894	34523	31638	11585	4278	125502	75810
2004	80091	43373	36290	33439	10848	4309	127229	81121

¹ Excludes air taxi operations.

Source: CAA

7.2 Air transport movements at NI airports: 2000-2004

Number

Belfast International	Scheduled			Charter			Total air transport movements
	Passenger craft	Cargo craft	Totals	Passenger craft	Cargo craft	Totals	
2000	29914	0	29914	5039	8057	13096	43010
2001	34777	1	34779	34781	34782	34783	45706
2002	28190	0	28190	4249	6014	10263	38453
2003	23918	0	29318	5207	5369	10576	39894
2004	32842	0	32842	5033	5498	10531	43373

Belfast City	Scheduled			Charter			Total air transport movements
	Passenger craft	Cargo craft	Totals	Passenger craft	Cargo craft	Totals	
2000	33019	0	33019	281	25	306	33325
2001	32438	0	32438	56	0	56	32494
2002	37025	0	37025	47	0	47	37072
2003	31568	0	31568	70	0	70	31638
2004	33389	0	33389	49	1	50	33439

City Of Derry	Scheduled			Charter			Total air transport movements
	Passenger craft	Cargo craft	Totals	Passenger craft	Cargo craft	Totals	
2000	3083	0	3083	178	0	178	3261
2001	4625	0	4625	111	0	111	4736
2002	4209	0	4209	131	0	131	4340
2003	4183	0	4183	95	0	95	4278
2004	4163	0	4163	146	0	146	4309

NI Totals	Scheduled			Charter			Total air transport movements
	Passenger craft	Cargo craft	Totals	Passenger craft	Cargo craft	Totals	
2000	66016	0	66016	5498	8082	13580	79596
2001	71840	1	71841	4487	6608	11095	82936
2002	69424	0	69424	4427	6014	10441	79865
2003	65069	0	65069	5372	5369	10741	75810
2004	70394	0	70394	5228	5501	10727	81121

Source: CAA

7.3 Scheduled and chartered terminal passenger traffic via NI by airport: 1995-2004

			Number
Airport / Year	Passengers		
	Scheduled	Chartered	Total
Belfast International			
1995	1691756	654311	2346067
1996	1749768	601491	2351259
1997	1895241	564103	2459344
1998	1975376	651587	2626963
1999	2242315	769888	3012203
2000	2329063	799181	3128244
2001	2862834	739868	3602702
2002	2860927	690176	3551103
2003	3117368	837064	3954432
2004	3523042	879458	4402500
Belfast City			
1995	1272817	7527	1280344
1996	1355047	5713	1360760
1997	1277997	4393	1282390
1998	1302074	12272	1314346
1999	1280715	1357	1282072
2000	1285687	4615	1290302
2001	1188417	3556	1191973
2002	1886493	3199	1889692
2003	1968836	5200	1974036
2004	2087291	3632	2090923
City Of Derry			
1995	61520	2782	64302
1996	61622	1992	63614
1997	53962	2081	56043
1998	47550	1545	49095
1999	96882	6622	103504
2000	158350	4354	162704
2001	181955	5564	187519
2002	190126	9020	199146
2003	190548	14957	205505
2004	210183	24304	234487
Totals			
1995	3026093	664620	3690713
1996	3166437	609196	3775633
1997	3227200	570577	3797777
1998	3325000	665404	3990404
1999	3619912	777967	4397879
2000	3773100	830850	4603950
2001	4233206	748988	4982194
2002	4937546	702395	5639941
2003	5276752	857221	6133973
2004	5820516	907394	6727910

Source: CAA

7.4 UK Airports by number of terminal passengers¹: 1999 and 2004

Number/percentage

Airport	2004		1999		Percentage change (2004/1999)
	Terminal passengers (thousands)	Percentage of passengers at all UK airports	Terminal passengers (thousands)	Percentage of passengers at all UK airports	
1 Heathrow	67,109	31.1	61,975	36.8	8.3
2 Gatwick	31,391	14.6	30,408	18.1	3.2
3 Manchester	20,969	9.7	17,418	10.3	20.4
4 Stansted	20,907	9.7	9,409	5.6	122.2
5 Birmingham	8,797	4.1	6,935	4.1	26.8
6 Glasgow	8,557	4.0	6,755	4.0	26.7
7 Edinburgh	7,992	3.7	5,084	3.0	57.2
8 Luton	7,520	3.5	5,246	3.1	43.3
9 Newcastle	4,708	2.2	2,930	1.7	60.7
10 Bristol	4,603	2.1	1,966	1.2	134.1
11 Belfast Int.	4,403	2.0	3,012	1.8	46.2
12 East Midlands	4,375	2.0	2,217	1.3	97.3
13 Liverpool	3,352	1.6	1,301	0.8	157.6
14 Aberdeen	2,634	1.2	2,432	1.4	8.3
15 Leeds Bradford	2,368	1.1	1,450	0.9	63.3
16 Belfast City	2,091	1.0	1,282	0.8	63.1
17 Cardiff Wales	1,873	0.9	1,297	0.8	44.4
18 London City	1,675	0.8	1,384	0.8	21.0
19 Southampton	1,531	0.7	749	0.4	104.4
20 Teesside	787	0.4	725	0.4	8.6
Other airports	8,039	3.7	4,388	2.6	83.2
Total	215,681	100	168,363	100	28.1

1 Excludes air taxi operations.

Source: CAA

7.5 Scheduled direct weekly flights¹ from NI airports: 2004 and 2005

Summer schedule

Destination	Belfast International		Belfast City		City Of Derry	
	Number of weekly flights		Number of weekly flights		Number of weekly flights	
	2004	2005	2004	2005	2004	2005
Aberdeen	5	5	–	6	–	–
Alicante	5	5	–	–	–	–
Amsterdam	7	7	–	–	–	–
Barcelona	–	7	–	–	–	1
Belfast City	–	–	–	–	–	–
Belfast International	–	–	–	–	–	–
Berlin Schoenefeld ⁶	–	3	–	–	–	–
Birmingham ⁵	–	19	42	43	6	6
Blackpool ²	–	–	13	16	–	–
Bournemouth	–	7	–	–	–	–
Bristol	20	20	19	18	–	–
Brussels	–	–	–	–	–	–
Cardiff	3	13	–	–	–	–
Copenhagen	–	–	–	–	–	–
Cork	–	–	10	10	14	14
Dublin	–	–	–	–	–	–
East Midlands	18	18	–	–	–	–
Edinburgh	22	26	25	25	–	–
Exeter	–	–	7	7	–	–
Faro	–	1	–	–	–	–
Geneva ⁷	–	4	–	–	–	–
Glasgow	27	27	26	30	7	7
Halifax	–	1	–	–	–	–
Inverness ⁷	–	7	–	–	–	–
Isle Of Man	–	–	22	24	–	–
Jersey ³	–	–	2	7	–	–
Kent International Airport Manston	–	2	–	–	–	–
Lanzarote ⁴	–	–	–	–	2	2
Leeds Bradford	12	12	19	18	–	–
Liverpool	46	46	–	26	–	–
London Heathrow	–	–	54	54	–	–
London Gatwick	27	27	28	25	–	–
London Stansted	31	33	–	–	13	7
London City	–	–	12	–	–	–
Luton	32	32	–	–	–	–
Majorca ^{4,6}	–	3	–	–	1	1
Malaga	5	5	–	–	–	–
Manchester ⁵	27	18	36	39	7	7
Newcastle	14	19	19	18	–	–
New York (Newark)	–	7	–	–	–	–
Nice	5	4	–	–	–	–
Norwich	–	–	–	7	–	–
Paris	7	7	–	–	–	–
Prague	4	7	–	–	–	–
Reus ⁴	–	–	–	–	1	–
Rome Ciampino ⁷	–	4	–	–	–	–
Shannon	–	–	–	–	–	–
Sheffield	–	–	–	–	–	–
Southampton	–	–	19	25	–	–
Teeside	7	–	–	–	–	–
Toronto	–	1	–	–	–	–

¹ Flights at least once a week during most of the timetable period.

² Flights to Blackpool now operate all year around.

³ Flights to Jersey from Belfast City operate during summer only.

⁴ Flights to Majorca, Lanzarote, Reus from City of Derry operated from June - September only.

⁵ Birmingham & Manchester Flights from City of Derry commenced 21 June 2004

⁶ Flights to Berlin Schoenefeld and Palma Majorca from Belfast International Airport commence on 2 July 2005.

⁷ Flights to Geneva, Rome and Inverness commence on 1st July 2005.

Sources: Belfast
International Airport
Belfast City Airport
City of Derry Airport

7.6 International air passenger traffic to and from NI airports: 2003 and 2004¹

Number/percentage							
Country/Airport	Belfast International Airport						
	Total	2004 Sched	Charter	Total	2003 Sched	Charter	% Change of total
Western Europe-EC							
Belgium							
Brussels	0	0	0	0	0	0	0
Denmark							
Copenhagen	0	0	0	0	0	0	0
Czech Republic							
Prague	44720	43663	1057	0	0	0	-
France							
Grenoble	6241	0	6241	0	0	0	-
Lyon	0	0	0	7637	0	7637	-
Nice	23750	23750	0	0	0	0	-
Paris (Charles de Gaulle)	48031	47424	607	0	0	0	-
Tarbes-Lourdes Inter.	8147	0	8147	7564	0	7564	8
Greece							
Corfu	15112	0	15112	9475	0	9475	59.5
Heraklion	23251	0	23251	17011	0	17011	36.7
Rhodes	8936	0	8936	14132	0	14132	-36.8
Italy							
Naples	7331	0	7331	0	0	0	-
Verona Villafra	6890	0	6890	0	0	0	-
Netherlands							
Amsterdam	86680	86680	0	108795	108481	0	-20.3
Portugal							
Faro	41374	0	41374	48766	0	48766	-15.2
Spain							
Alicante	102415	35208	67207	62305	0	62305	64.4
Almeria	4865	0	4865	7364	0	7364	-33.9
Barcelona	24840	20793	4047				
Gerona	14057	0	14057	13227	0	13227	6.3
Ibiza	32575	0	32575	24957	0	24957	30.5
Mahon	14341	0	14341	17910	0	17910	-19.9
Malaga	115320	35425	79895	75506	0	75506	52.7
Palma De Mallorca	104698	0	104698	120559	0	120559	-13.2
Reus	46248	0	46248	43204	0	43204	7.0
Spain (Canary Islands)							
Arrecife	74485	0	74485	68335	0	68335	9.0
Fuerteventura	25965	0	25965	21034	0	21034	23.4
Las Palmas	55266	0	55266	59235	0	59235	-6.7
Tenerife (Surreina Sofia)	73564	0	73564	72624	0	72624	1.3
Western Europe-Other							
Malta							
Malta	14457	0	14457	6393	0	6393	126.1
Turkey							
Bodrum (Milas)	16162	0	16162	11493	0	11493	40.6
Dalaman	17246	0	17246	11879	0	11879	45.2
Izmir (Adnam Menderes)	0	0	0	0	0	0	-
Cyprus							
Larnaca	32142	0	32142	37611	0	37611	-14.5
Tunisia							
Monastir	7756	0	7756	0	0	0	-
Canada							
Toronto	31576	20628	10948	17686	11258	6428	78.5
U.S.A							
New York (JF Kennedy)	0	0		0	0	0	-
Sanford	21292	0	21292	16726	0	16726	27.3
Total	1149733	313571	836162	901428	119739	781375	27.5
Belfast City Airport							
All routes	44612	33664	10948	13684	9959	3725	226.0
City of Derry Airport							
All routes	51879	30914	20965	43480	28974	14506	19.3

¹ Excludes air taxi operations.

Source: CAA

Chapter 8

General Transport Statistics

8.1 Employees in transport related employment¹ in NI: March 2005

Class	Standard Industrial Classification 2003	Number					
		Males			Females		
		Full-time	Part-time	Total	Full-time	Part-time	All employees
34	Manufacture of motor vehicles, trailers and semi-trailers	3250	10	3260	170	20	3450
35	Manufacture of other transport equipment	5920	10	5930	470	50	6450
50	Sale, maintenance and repair of motor vehicles and motorcycles; retail sale of automotive fuel	8480	1600	10080	2230	2470	14780
60	Land transport; transport via pipelines	10360	1090	11450	1050	990	13490
61	Water transport	370	10	380	180	30	590
62	Air transport	220	10	230	330	110	670
63	Supporting and auxiliary transport activities, activities of travel agents	2630	340	2970	1600	530	5110
Total		31240	3070	34300	6030	4200	10230

¹Figures are rounded to the nearest 10 and may not sum due to rounding.

Source: Quarterly Employment Survey

8.2 All employees in transport related employment¹ in NI: March 2001-2005

Class	Standard Industrial Classification 2003	Number				
		2001	2002r	2003r	2004r	2005p
34	Manufacture of motor vehicles, trailers and semi-trailers	4640	4670	4570	4220	3450
35	Manufacture of other transport equipment	8060	7820	6920	6300	6450
50	Sale, maintenance and repair of motor vehicles and motorcycles; retail sale of automotive fuel	14580	15170	15420	14620	14780
60	Land transport; transport via pipelines	11140	12030	12400	13140	13490
61	Water transport	510	540	590	560	590
62	Air transport	780	650	630	580	670
63	Supporting and auxiliary transport activities, activities of travel agents	4940	5310	5430	5200	5110
Total		44640	46180	45980	44620	44540

¹Figures are rounded to the nearest 10 and may not sum due to rounding.

Source: Quarterly Employment Survey

8.3 Method of travel to work, UK/NI comparison: 2004 Autumn

Method of travel	Number/percentage			
	UK		NI	
	Number ¹	%	Number ¹	%
Car, van, minibus	18142	71.4	530	83.5
Motorbike, moped, scooter	241	0.9	*	*
Bicycle	643	2.5	*	*
Bus, coach	1939	7.6	25	4.0
Taxi	89	0.4	*	*
Railway train	994	3.9	*	*
Underground train, tram	582	2.3	*	*
Walk	2659	10.5	57	9.0
Other method	121	0.5	*	*
Total²	25411	100	634	100.0

1 Figures rounded to the nearest thousand and so may not add to the total. They are based on those in employment, excluding those on government schemes and those working from home or in the same grounds or buildings as their home.

2 Excludes those for whom method of travel is not known.

* below minimum quotation level

Source: Labour Force Survey, September to November 2004
(UK - ONS; NI - DETI)

8.4 Method of travel to work, NI: 2000-2004¹

Method of travel	Percentage				
	2000	2001	2002	2003	2004
Car, van, minibus	81.4	81.6	79.9	82.3	83.5
Motorbike, moped, scooter	*	*	*	*	*
Bicycle	*	*	*	*	*
Bus, coach	4.7	4.5	5.1	4.8	4.0
Taxi	*	*	*	*	*
Railway train	*	*	*	*	*
Walk	10.3	10.8	11.2	9.5	9.0
Other method	*	*	*	*	*
Total	100.0	100.0	100.0	100.0	100.0

1 Figures are based on those in employment, excluding those on government schemes and those working from home or in the same grounds or buildings as their home.

*below minimum quotation level 8,000 cases

Source: Labour Force Survey, September to November 2000 to 2004
(UK - ONS; NI - DETI)

8.5 Provision of NI charged car parking by local government district and Roads Service division: 2004-05

Number									
	DRD¹			Private sector¹				Total spaces	Total car parks
	Spaces	Car parks	On-street Spaces	Multi storey		Surface			
				Spaces	Car parks	Spaces	Car parks		
Antrim	640	2	0	0	0	0	0	640	2
Ballymena	1694	6	0	1100	1	200	1	2994	8
Larne	321	4	0	0	0	0	0	321	4
Ballymoney	216	2	0	0	0	0	0	216	2
Moyle	0	0	0	0	0	0	0	0	0
Coleraine	1028	5	0	0	0	0	0	1028	5
Limavady	264	2	0	0	0	0	0	264	2
Londonderry	653	8	0	2070	3	0	0	2723	11
Northern Division	4816	29	0	3170	4	200	1	8186	34
Ards	713	10	0	0	0	0	0	713	10
Armagh	0	0	0	0	0	0	0	0	0
Banbridge	0	0	0	0	0	0	0	0	0
Craigavon	0	0	0	0	0	0	0	0	0
Down	380	5	0	0	0	0	0	380	5
Newry & Mourne	865	7	0	0	0	0	0	865	7
Southern Division	1958	22	0	0	0	0	0	1958	22
Belfast North/South	2303	21	1400	4955	10	1582	19	10240	50
C' fergus/N' abbey	640	6	0	0	0	0	0	640	6
Castlereagh	0	0	0	0	0	0	0	0	0
Lisburn	809	8	0	1420	3	128	1	2357	12
North Down	615	9	0	450	1	406	1	1471	11
Eastern Division	4367	44	1400	6825	14	2116	21	14708	79
Cookstown	0	0	0	0	0	0	0	0	0
Dungannon	328	4	0	0	0	0	0	328	4
Fermanagh	617	7	0	0	0	0	0	617	7
Magherafelt	434	2	0	0	0	0	0	434	2
Omagh	619	5	0	0	0	0	0	619	5
Strabane	279	5	0	0	0	0	0	279	5
Western Division	2277	23	0	0	0	0	0	2277	23
Total	13418	118	1400	9995	18	2316	22	27129	158

¹ All figures refer to chargeable spaces/car parks only.

Source: DRD Roads Service

8.6 Deliveries of petroleum for use in NI: 2000-01 to 2004-05

Tonnes

	2000-01r		2001-02r		2002-03r		2003-04r		2004-05	
	Tonnes	%	Tonnes	%	Tonnes	%	Tonnes	%	Tonnes	%
Unleaded petrol¹										
Super	–	–	–	–	–	–	–	–	6427	0.9
Premium	–	–	–	–	–	–	–	–	16	0.0
ULSP ²	–	–	–	–	–	–	–	–	352577	47.5
Total	–	–	–	–	–	–	–	–	359020	48.4
Leaded petrol¹										
Lead replacement ³	–	–	–	–	–	–	–	–	364	0.0
Total leaded	–	–	–	–	–	–	–	–	364	0.0
Total Petrol	313689	65.2	393486	63.5	381082	58.8	364139	55.0	359385	48.5
Automotive Diesel	167690	34.8	226259	36.5	266812	41.2	297377	45.0	382316	51.5
Total	481379	100.0	619745	100.0	647894	100.0	661516	100.0	741701	100.0

1 Splits for individual petrol categories are unavailable prior to 2004-05.

Source: DETI

2 Ultra Low Sulphur Petrol - this is finished motor spirit with a specification similar to that for Premium unleaded grade, but with a sulphur content of less than 50 parts per million.

ULSP came onto the market from 1st January 2002.

3 Lead replacement fuel came into effect from 1st January 2000.

8.7 HM Coastguard statistics 2000-2004: Belfast Marine Rescue Sub Centre (MRSC)

Number

	2000	2001	2002	2003	2004
Search and rescue operations					
Commercial vessels	10	9	9	13	1
Fishing vessels	17	27	28	24	17
Pleasure craft	108	152	176	159	167
Incidents to persons	58	52	64	61	78
Medical evacuations	6	12	15	24	16
Other craft	45	54	48	38	38
No persons or craft involved	26	25	35	42	33
Total	270	331	375	361	350
Persons involved in incidents					
Persons rescued	105	132	180	122	147
Persons assisted	327	423	549	444	445
Lives lost	10	7	11	9	11
Total	442	562	740	575	603

Source: Maritime and Coastguard Agency

8.8 Domestic Sea Passengers at Northern Ireland Ports 1999-2004

							Number
NI PORT	GB PORT	1999	2000	2001r	2002	2003	2004
Ballycastle	Campbeltown	24,569	30	-	-	-	-
Belfast	Heysham	150,143	157,212	130,694	90,097	5,584	5,636
Belfast	Liverpool	141,588	153,586	130,476	137,348	149,640	158,164
Belfast	Stranraer	1,650,710	1,458,283	1,357,793	1,296,028	1,362,792	1,319,345
Belfast	Troon	198,666	363,937	362,293	331,525	367,677	302,797
Larne	Ardrossan	3,087	3,526	980	-	-	-
Larne	Cairnryan	739,954	643,574	604,384	651,305	598,650	595,070
Larne	Fleetwood	51,144	52,658	66,990	67,293	66,526	71,507
Larne	Heysham	-	-	491	-	-	-
Larne	Liverpool	-	-	-	2,830	-	-
Larne	Troon	-	-	1,485	5,212	100,185	119,808
Warrenpoint	Heysham	6,924	6,759	5,347	5,382	6,085	4,154
Total		2,966,785	2,839,565	2,660,933	2,587,020	2,657,139	2,576,481

NI PORT	IOM PORT	1999	2000	2001	2002	2003	2004
Belfast	Douglas	25,284	23,764	15,290	33,655	29,911	29,219
Warrenpoint	Douglas	-	1,500	-	-	-	-
Total		25,284	25,264	15,290	33,655	29,911	29,219

Source: Maritime Statistics DFT

Notes for Guidance

CHAPTER 1 VEHICLE REGISTRATIONS

Table 1.3

Tax Class 61– Not Licensed: Tax class printed on a Registration Book for a vehicle which has not been Licensed with DVLNI.

Tax Class 70-Exempt (No Licence): Vehicles used exclusively on roads not repairable at public expense.

Tax Class 88-Age Exempt: Certain types of vehicles more than 25 years old. Tax Class 93-D or P Export (Bicycle): As tax Class 92 but relates to motorcycles.

CHAPTER 2 DRIVER AND VEHICLE TESTING

Tables 2.1-2.3

Motor vehicle testing scheme: Motor vehicles other than goods vehicles, public service vehicles and large private vehicles must be tested at four years and over.

Passenger service vehicle testing scheme: Public Service Vehicles (buses and taxis) are tested on application for a licence. Large Passenger Carrying Vehicles are tested at one year old and over.

Goods vehicle testing scheme: Goods vehicles are tested at one year and over.

CHAPTER 3 ROAD NETWORK

Tables 3.1 (NI) and 3.3

- 1) All figures shown are route lengths.
- 2) Slip roads are not included in the motorway route lengths. Slip road route lengths add up to approximately 19km.
- 3) The locations of council boundaries do not coincide with boundaries used by Road Service for Motorway maintenance purposes. The figures given here for motorway lengths within council areas are a close approximation.

CHAPTER 4 FREIGHT

Table 4.2

A Roads Service licence is required by any person or company wishing to use a bus or coach to carry passengers by road for reward. Each licence specifies the fleet which the holder may use and the services he wishes to operate.

Table 4.3-4.5

Table 4.3 shows results from the Continuing Survey of Road Goods Transport (CSRGT) and tables 4.4 and 4.5 report results from the Continuing International Road Haulage Survey (CIRHS), both of which are conducted by the Department of Transport. These surveys provide information on the journeys and loads made by goods vehicles of over 3.5 tonnes.

Please note that from January 2004, in particular for the international activity, there is a discontinuity in series due to a change in the methodology and the type of information that has been collected. This follows a recommendation in the recent Review of Road Freight Statistics

(National Statistics Quality Review Series, Report No.30) to start a new survey, CSRGT (NI), which collects information on all activity undertaken by NI hauliers.

Firstly, there is a large increase in the amount of tonnage reported as going to/from the Irish Republic. This is because information previously supplied reflected only those trips where the journey, carried out by NI hauliers, either started or ended in Great Britain. One of the reasons for starting the CSRGT(NI) was to collect information of activity which crossed the Irish Land Boundary. This information is reflected in the 2004 tables.

Secondly, there is a decrease in the amount of activity reported as going to/from mainland Europe which is most likely to be caused by a reduced number of international trips being reported in the weekly sample. This is due to a change in the sampling methodology. Sampling via the IRHS was targeted specifically at those hauliers who held an International Operators licence and were known to operate in mainland Europe (approx 10 hauliers were sampled each week). The CSRGT(NI) differs in that the weekly sample is a random selection of approx 30 HGVs which are registered in Northern Ireland. It is therefore less likely that the same number of trips to Europe will be reported each week in the CSRGT(NI).

Table 4.6-4.7

The transport of freight by rail to and from Northern Ireland ceased as of the 31st December 2003. All freight will now be transported by road.

CHAPTER 5 ROAD TRAFFIC INJURY COLLISIONS

The data in 5.1 to 5.5 are now in calendar year format. Financial year data are available on request from CSRB.

Collision: Collision involving personal injury occurring on the public highway (including footpaths) in which a vehicle is involved.

Killed: Died within 30 days from injuries received in an accident.

Serious injury: An injury for which a person is detained in hospital as an 'in-patient', or any of the following injuries whether or not they are detained in hospital: fractures, concussion, internal injuries, crushings, severe cuts and lacerations or severe general shock requiring medical treatment.

Slight Injury: An injury of a minor character such as a sprain, bruise or cut not judged to be severe or slight shock requiring roadside attention.

Casualty: A person who sustains a slight, serious or fatal injury.

Children: Under 16 years of age.

CHAPTER 7 AIR TRANSPORT

Aircraft movement: An aircraft take-off or landing at an airport. For airport traffic purposes, one arrival and one departure are counted as two movements.

Air transport movements: Landings or takeoffs of aircraft engaged in the transport of passengers, cargo or mail on commercial terms. All scheduled movements including empty aircraft, loaded charter and air taxi movements are included.

Air taxi movement: Movement by a light aircraft operating on a non-scheduled service.

These are predominantly sole-use charter operations.

Passenger traffic (Terminal): All revenue and non-revenue passengers on air transport movements flights where the passenger joins or leaves an aircraft at the states airport.

Scheduled services: Those performed according to a published timetable, available for use by the general public.

Charter services: All other services.

CHAPTER 8 GENERAL TRANSPORT STATISTICS

Tables 8.3 and 8.4

The Labour Force Survey (LFS) is a sample survey of approximately 60,000 private households in the United Kingdom each quarter. Respondents are asked questions about their economic activity and related issues. In Great Britain the survey has been conducted quarterly since Spring 1992. In Northern Ireland the survey was carried out annually until the winter of 1994-95, when a quarterly survey was introduced.

Table 8.6

Due to the revisions made by DTI in January of this year to all motor spirit and DERV figures for the years 2001 to 2003 we are unable to provide split figures for the individual categories of petrol (Super, Premium, ULSP and Lead replacement) for the years 2000-01 to 2003-04. Unfortunately DTI were unable to provide split figures for their revisions.

Table 8.7

Other craft: Includes incidents involving military vessels, military aircraft, civilian aircraft, etc.

No person or craft involved: Includes incidents in which no craft or person was involved such as hoaxed and false alarms.

Table 8.8

The figures in the table show the number of ferry traffic passengers travelling on each route, to and from Northern Ireland.

ASSOCIATED PUBLICATIONS

Travel Survey for Northern Ireland

Available in electronic copy:

Roads Service
Transportation Unit
Clarence Court
10-18 Adelaide Street
BELFAST BT2 8GB

Telephone: 02890 440096
Website: http://www.roadsni.gov.uk/Publications/specific/Travel_Survey_for_NI_V2%20.pdf
E-mail: roads.transportation@drdni.gov.uk

Northern Ireland Road and Rail Transport Statistics Quarterly Bulletin

Available in both electronic and hard copy:

Central Statistics & Research Branch
Department for Regional Development
Clarence Court
10-18 Adelaide Street
BELFAST BT2 8GB

Telephone: 02890 540801
Fax: 02890 540782
Website: http://www.drdni.gov.uk/DRDwww_Statistics
E-mail: Stephanie.diffin@drdni.gov.uk

Regional Transportation Strategy for Northern Ireland 2002-2012

Available electronic copy and hard copy:

Regional Transportation Strategy Secretariat
Clarence Court
10-18 Adelaide Street
BELFAST BT2 8GB

Telephone: 00890 540616
Fax: 02890 540604
Website: www.drdni.gov.uk/rts
E-mail: rtsd@drdni.gov.uk

Traffic and Travel Information 2004

Available hard copy cost £35:

Traffic Information Control Centre
1B Airport Road
BELFAST BT3 9DY

Telephone: 02890 254517
Fax: 02890 254555
E-mail: ticc.belfast@drdni.gov.uk

Northern Ireland Ports Traffic:

Available on electronic format:

Statistics Research Branch
DETI
Neterleigh
Massey Avenue
BELFAST BT4 2JP

Telephone: 02890 529304
Fax: 02890 529568
Website: www.statistics.detini.gov.uk
E-mail: clare.lyle@detini.gov.uk

Transport Statistics Great Britain 2004:

Department for Transport
2nd Floor Zone 17
Great Minister House
76 Marsham Street
LONDON SW1P 4DR

Telephone: 02079 443098
Website: www.dft.gov.uk/transtat

ROI Road Freight Transport Survey 2004

Available electronic copy and hard copy
£10:

Road Freight Transport Survey
Central Statistics Office
Skehard Road
Cork
IRELAND

Telephone: 00353 2145 35000
Fax: 00353 2145 35555
Website: www.cso.ie
E-mail: web.master@cso.ie

PSNI Northern Ireland Collision & Casualty Summary

PSNI Northern Ireland Casualties by Road User, Type and Serenity

PSNI Principal Factors in Road Traffic Collisions

Available electronic copy:

Website: www.psni.police.uk

Sources Used for Publications

DVLNI-Driving and Vehicle Licensing	www.dvlni.gov.uk
NISRA– Northern Ireland Statistics and Research Agency	www.nisra.gov.uk
DVTA-Driving Vehicle Testing Agency	www.mot2-ni.gov.uk/home
DSA-Driving Standard Agency	www.dsa.gov.uk
DFT-Department for Transport	www.dft.gov.uk/transtat
DOE-Department of the Environment	http://csrb.doeni.gov.uk
RTLD-Road Transport Licensing Division	www.dvlni.gov.uk
CAA-Civil Aviation Authority	www.caa.co.uk
PSNI-Police Service Northern Ireland	www.psni.police.uk
DRD-Department for Regional Development	http://csrb.drdni.gov.uk/DRDwww_Statisitcs
Irish Rail (ROI)	ww.cso.ie
Translink	www.translink.co.uk
Maritime and Coastguard Agency	www.mcga.gov.uk/c4mca/mcga-home
Roads Service	www.roadsni.gov.uk

