



Department of the  
**Environment**  
[www.doeni.gov.uk](http://www.doeni.gov.uk)

# Northern Ireland Seat Belt Survey April 2010: Wearing Rates in Cars

*July 2010*





# Table of Contents

|   | <b>Page</b> |
|---|-------------|
| Background to Survey                                  | 2           |
| Summary   | 3           |
| Main Findings   | 5           |
| Survey Trends   | 8           |
| Appendices  |             |
| Appendix 1: Detailed tables                           | 15          |
| Appendix 2: Cars observed by time of session and site | 26          |
| Appendix 3: User guidance                             | 27          |

## **Background to the Survey**

This is the twenty-first in a series of Seat Belt Surveys. The series, which began in 1994, had been conducted biannually, in April and October. However, since April 1997 the survey has been conducted on an annual basis in April of each year, with the exception of 2001 when a survey was carried out in both April and October.

Data for this report were collected from 15 sites throughout Northern Ireland, consisting of 6 rural, 3 motorway and 6 urban locations.

Fieldwork involved observing stationary traffic and recording details such as gender, estimated age and whether a restraint was being used for any car occupants. Recording took place in eight half hour sessions between 08:30 and 17:00 on Tuesday 20<sup>th</sup> and Saturday 24<sup>th</sup> April 2010. For logistical reasons, the Tuesday session at Greenisland was carried out on Tuesday 27<sup>th</sup> April 2010. In total 16,057 cars were observed and details of 24,357 occupants recorded.

# Summary

## **Seat Belt Wearing Rates**

In April 2010, 98% of drivers and 97% of front seat passengers were recorded as wearing a seat belt. Back seat passengers were less likely to use a restraint (92%). The overall seat belt wearing rate for all car occupants observed was 97% (see appendix 1: tables 3-6).

## **Changes in Wearing Rates since April 2009**

Over the last year, the seat belt wearing rate for drivers has increased from 97% to 98%. The seat belt wearing rate for all car occupants has increased from 96% to 97%.

## **Back Seat Belt Wearing Rates**

The overall seat belt wearing rate for back seat passengers (92%) disguises different wearing rates for adults (14 years and over) and children (13 years and under), with 88% of adults wearing a restraint in the back, compared to 93% of children. Children under one year of age have a back seat restraint wearing rate of 98%.

## **Restraint wearing rates by type of site**

Ninety-seven percent of drivers on urban roads were restrained, compared to 98% of drivers on rural roads and motorways. Back seat passengers observed wearing rates varied from 96% on rural roads to 89% on urban roads (see appendix 1: tables 7-9).

## **Seat Belt Wearing rate by Gender**

Ninety-eight percent of female and 97% of male drivers were restrained. With regard to front seat passengers, 97% of females and 96% of males were restrained. There was no difference between male and female back seat passengers (see appendix 1: tables 10-11).

## **Restraint wearing rates by age**

In adult age groups (14+), driver restraint wearing rates are similar, irrespective of age group (see figure 3). Eight percent of children aged 10-13, 9% of those aged 5-9 and 4% of those aged 1-4 were unrestrained when travelling in the back of a car (see appendix 1: table 15).

## **Influence of Driver upon Seat Belt Wearing Rates for Passengers**

The seat belt wearing rate for both front and back seat passengers was higher when the driver of the vehicle wore a seat belt, compared to when they did not. Ninety-seven percent of front seat passengers wore a seat belt when the driver of the vehicle was wearing one, compared to around 63% when the driver was not (see appendix 1: table 19).

## **Trends in Seat Belt Wearing (1994-2010)**

Wearing rates overall have improved markedly since 1994. Driver wearing rates have increased from 88% to 98%, while front seat wearing rates have increased from 88% to 97%. Back seat wearing rates have increased fairly consistently from around 51% in the early years of the survey to around 92% in recent years. However, between 2009 and 2010 back seat wearing rates of those aged 5-9 years old fell from 95% to 91% (see table 1 and figures 6-7).

## **Comparison with Great Britain**

According to the latest GB figures available (2009) the wearing rates were 95% for drivers, 95% for front seat passengers and 89% for back seat passengers. This latest figure has risen considerably from 63% in April 1997. The equivalent wearing rates for Northern Ireland (2010) were 98% for drivers, 97% for front seat passengers and 92% for back seat passengers. The 2010 Great Britain Seat Belt Survey will be carried out in October 2010 (See figures 10-14).

## **Mobile phone usage in 2010**

This is the eighth Northern Ireland Seat Belt Survey that has observed the use of mobile phones by drivers. Just under one percent (0.8%) of drivers were using a mobile phone (0.6% were using a hand-held phone and 0.2% were using a hands-free phone) (see appendix 1: tables 24-28).

**Table 1: Summary of Key Results from NI Seat Belt Surveys 1994 – 2010**

|  | Apr-94    | Apr-95    | Apr-96    | Apr-97    | Apr-98    | Apr-99    | Apr-00    | Apr-01    | Oct-01    | Apr-02    | Apr-03    | Apr-04    | Apr-05    | Apr-06    | Apr-07    | Apr-08    | Apr-09    | Apr-10    |
|--|-----------|-----------|-----------|-----------|-----------|-----------|-----------|-----------|-----------|-----------|-----------|-----------|-----------|-----------|-----------|-----------|-----------|-----------|
| <b>% of car occupants wearing seat belts</b> |           |           |           |           |           |           |           |           |           |           |           |           |           |           |           |           |           |           |
| Driver                                       | 88        | 85        | 85        | 85        | 87        | 86        | 87        | 86        | 88        | 90        | 90        | 91        | 93        | 93        | 95        | 96        | 97        | 98        |
| Front Seat                                   | 88        | 86        | 85        | 86        | 88        | 86        | 87        | 86        | 89        | 89        | 89        | 90        | 92        | 93        | 95        | 95        | 96        | 97        |
| Back Seat                                    | 52        | 50        | 51        | 56        | 61        | 62        | 65        | 67        | 71        | 72        | 75        | 77        | 81        | 85        | 90        | 91        | 93        | 92        |
| Of which:                                    |           |           |           |           |           |           |           |           |           |           |           |           |           |           |           |           |           |           |
| Under 1 year                                 | 96        | 96        | 97        | 95        | 96        | 93        | 97        | 98        | 97        | 95        | 97        | 98        | 98        | 96        | 98        | 99        | 98        | 98        |
| 1-4 years                                    | 70        | 65        | 72        | 78        | 78        | 78        | 82        | 86        | 86        | 85        | 87        | 88        | 92        | 96        | 96        | 96        | 95        | 96        |
| 5-9 years                                    | 50        | 49        | 50        | 54        | 61        | 62        | 68        | 65        | 73        | 71        | 75        | 77        | 82        | 84        | 90        | 94        | 95        | 91        |
| 10-13 years                                  | 47        | 47        | 47        | 51        | 58        | 65        | 65        | 68        | 70        | 72        | 75        | 78        | 82        | 86        | 92        | 93        | 96        | 92        |
| <b>Overall</b>                               |           |           |           |           |           |           |           |           |           |           |           |           |           |           |           |           |           |           |
| <b>Wearing Rate %</b>                        | <b>82</b> | <b>80</b> | <b>80</b> | <b>81</b> | <b>84</b> | <b>83</b> | <b>84</b> | <b>84</b> | <b>87</b> | <b>88</b> | <b>88</b> | <b>89</b> | <b>91</b> | <b>93</b> | <b>95</b> | <b>95</b> | <b>96</b> | <b>97</b> |
| <b>Occupancy Rate</b>                        |           |           |           |           |           |           |           |           |           |           |           |           |           |           |           |           |           |           |
| Front Seat Passengers                        | 0.41      | 0.39      | 0.40      | 0.40      | 0.38      | 0.38      | 0.38      | 0.37      | 0.38      | 0.36      | 0.37      | 0.37      | 0.36      | 0.35      | 0.37      | 0.36      | 0.36      | 0.36      |
| Back Seat Passengers                         | 0.27      | 0.24      | 0.24      | 0.23      | 0.21      | 0.20      | 0.21      | 0.20      | 0.18      | 0.17      | 0.17      | 0.16      | 0.15      | 0.15      | 0.17      | 0.17      | 0.17      | 0.16      |

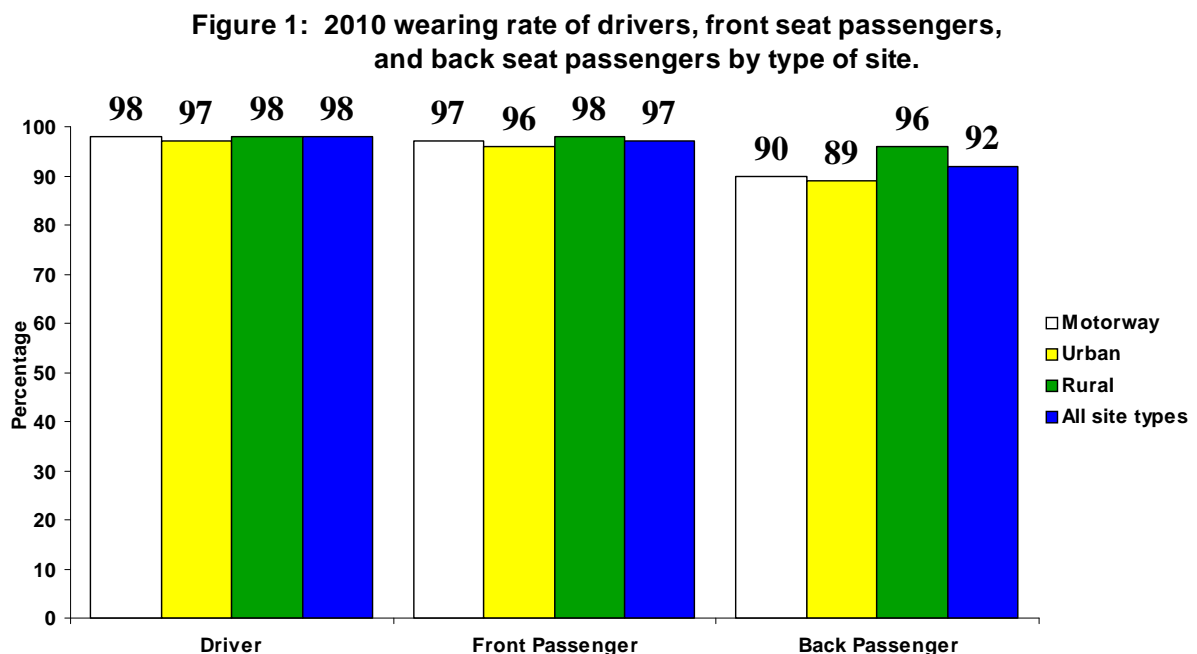
# Main Findings

## Occupancy rates 2010

Thirty-six percent of all vehicles contained front seat passengers. In addition there was an average of 0.16 back seat passengers per vehicle observed (see appendix1: table 2).

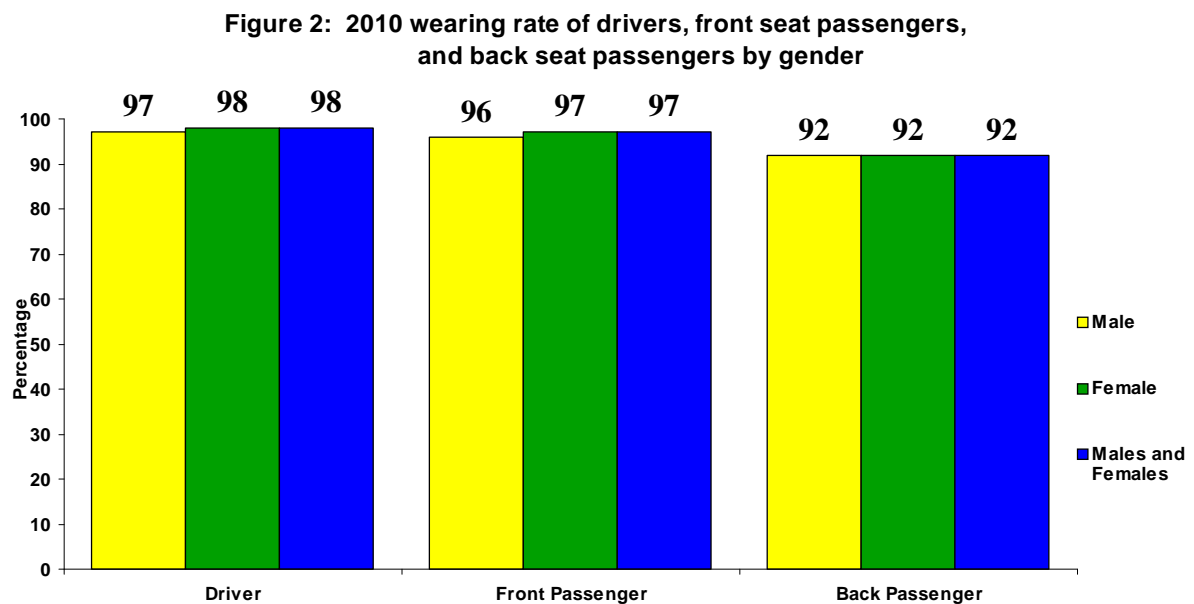
## Wearing rate by type of site 2010

Ninety-seven percent of drivers on urban roads were restrained, compared to ninety-eight percent of drivers on rural roads and motorways. Front seat passengers observed wearing rates are similar across all site types, while back seat passengers are more likely to wear a restraint on a rural road (96%) than they are on an urban road (89%) or motorway (90%). Irrespective of type of road, back seat passengers are less likely to be restrained than drivers and front seat passengers (see figure 1).



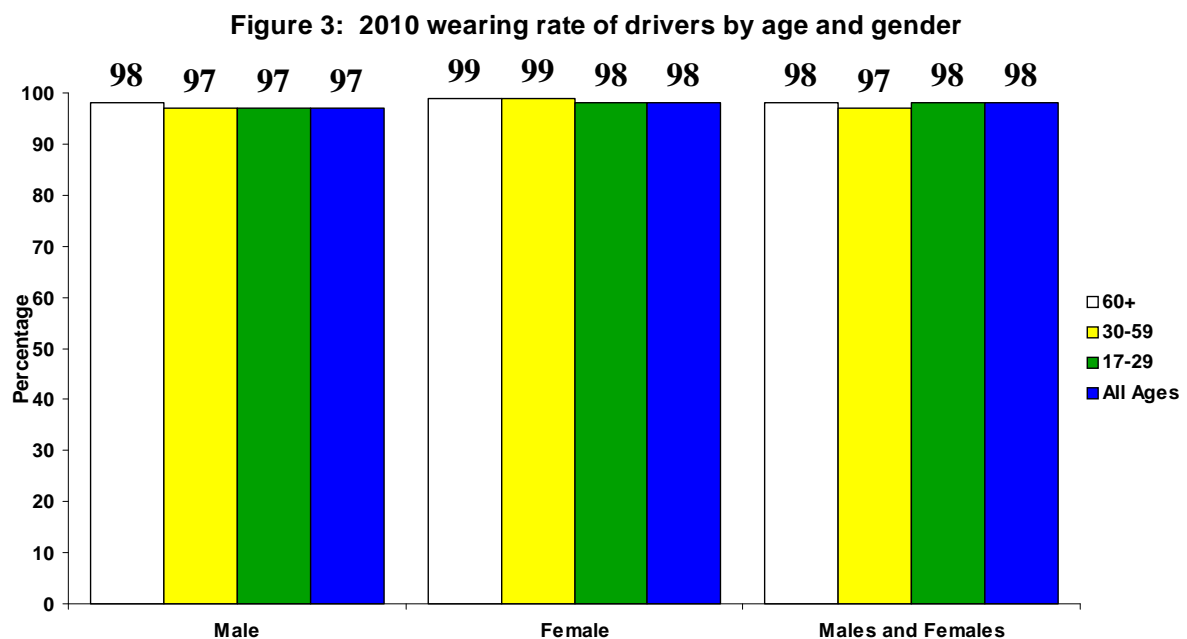
## Wearing rate by gender 2010

Ninety-eight percent of female and 97% of male drivers were restrained. With regard to front seat passengers, 97% of females and 96% of males were restrained. There was no difference between male and female back seat passengers (see figure 2).



## Driver wearing rate by age and gender 2010

In adult age groups, driver restraint wearing rates are similar, irrespective of age (see figure 3).

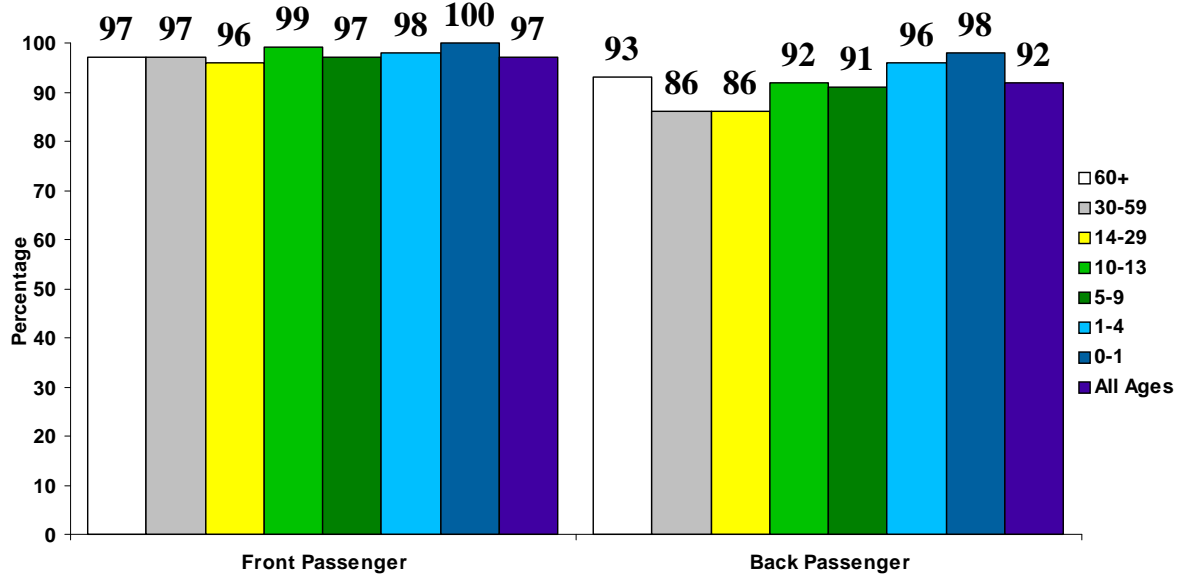




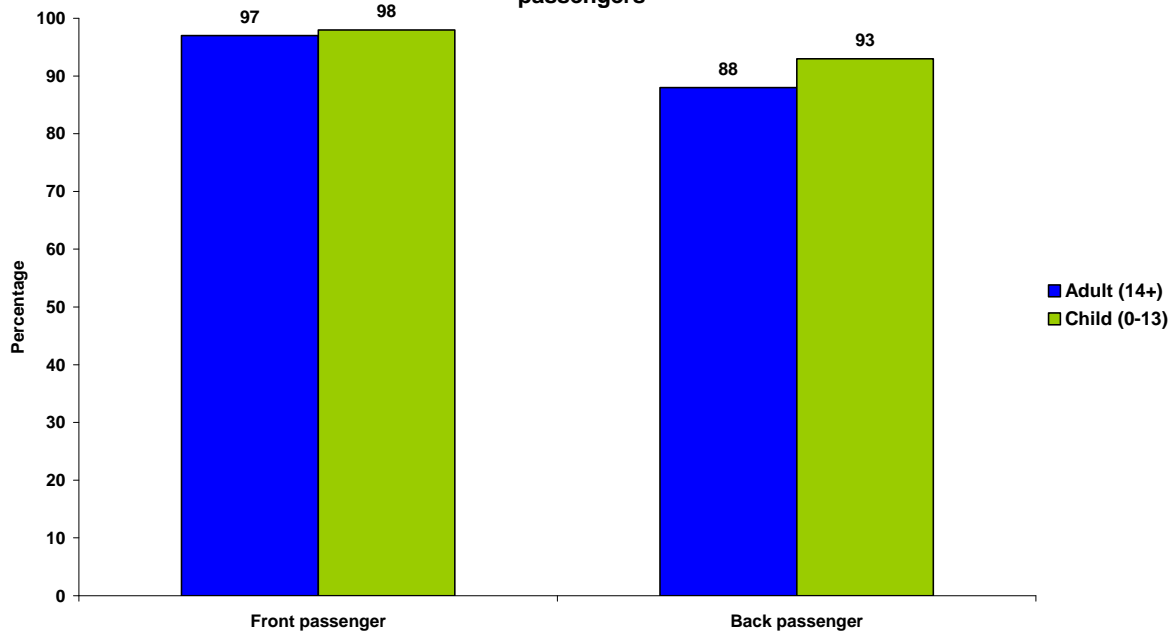
## Front and back seat passenger wearing rates by age 2010

While wearing rates for adult front seat passengers were similar to those observed for child front seat passengers, adult back seat passengers were less likely (88%) to wear a restraint than child back seat passengers (93%) (see figures 4 and 5).

**Figure 4: 2010 wearing rate of front seat passengers and back seat passengers by age**



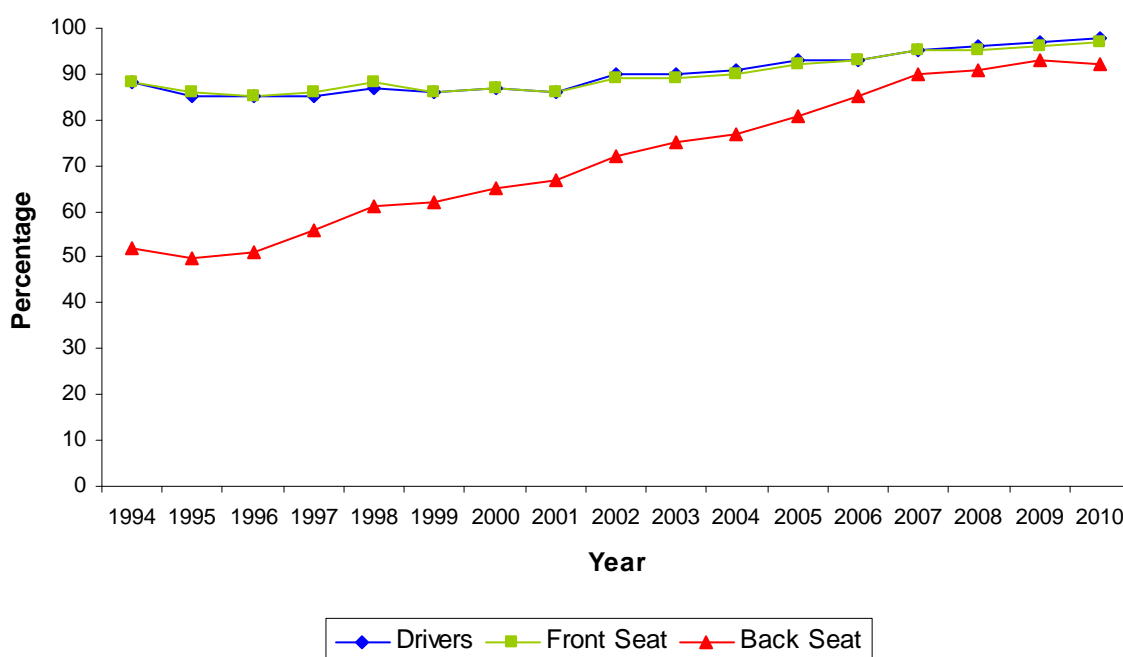
**Figure 5: 2010 wearing rate of adult (14+) and child (0-13) front and back seat passengers**



## Survey trends (1994-2010)

The seat belt wearing rate for drivers was 98% and for front seat passengers was 97%. These figures for drivers and front seat passengers represent the highest rates recorded since the current series of Northern Ireland Seat Belt Surveys began in 1994. The wearing rate for back seat passengers has risen to around 92% in the most recent years of the survey from around 51% in the early years. Over the last year, the seat belt wearing rate for drivers has increased from 97% to 98%. The seat belt wearing rate for all car occupants has increased from 96% to 97% (see table 2, figure 6).

**Figure 6 - Seat Belt Wearing Rates in NI:1994 - 2010**



**Table 2: Summary of Key Results from NI Seat Belt Surveys (1994 - 2010)**

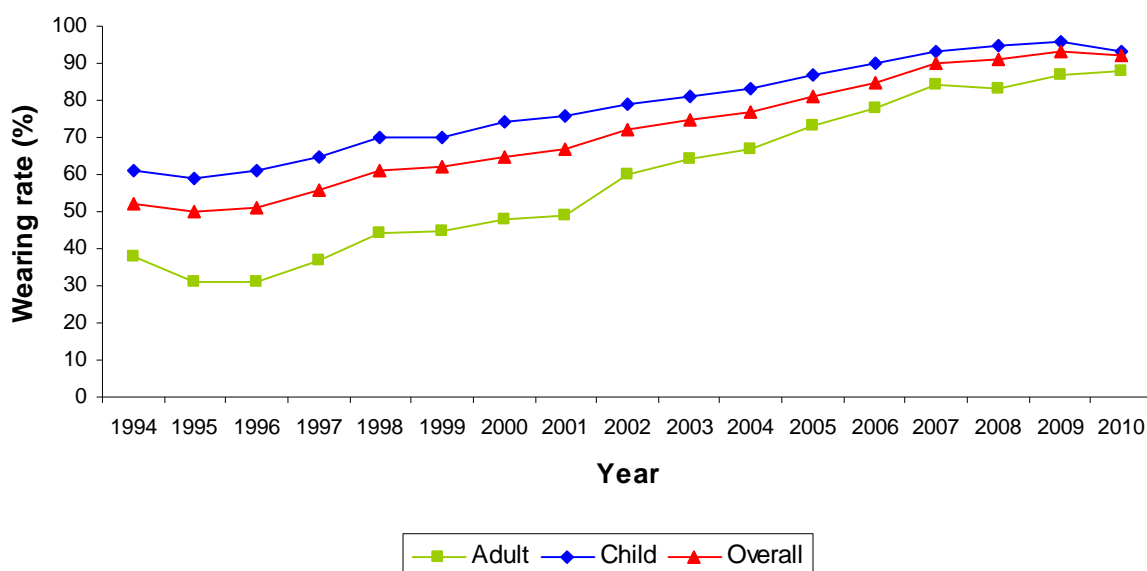
|                | 1994      | 1995      | 1996      | 1997      | 1998      | 1999      | 2000      | 2001      | 2002      | 2003      | 2004      | 2005      | 2006      | 2007      | 2008      | 2009      | 2010      |
|----------------|-----------|-----------|-----------|-----------|-----------|-----------|-----------|-----------|-----------|-----------|-----------|-----------|-----------|-----------|-----------|-----------|-----------|
| Driver         | 88        | 85        | 85        | 85        | 87        | 86        | 87        | 86        | 90        | 90        | 91        | 93        | 93        | 95        | 96        | 97        | 98        |
| Front Seat     | 88        | 86        | 85        | 86        | 88        | 86        | 87        | 86        | 89        | 89        | 90        | 92        | 93        | 95        | 95        | 96        | 97        |
| Back Seat      | 52        | 50        | 51        | 56        | 61        | 62        | 65        | 67        | 72        | 75        | 77        | 81        | 85        | 90        | 91        | 93        | 92        |
| <b>Overall</b> | <b>82</b> | <b>80</b> | <b>80</b> | <b>81</b> | <b>84</b> | <b>83</b> | <b>84</b> | <b>84</b> | <b>88</b> | <b>88</b> | <b>89</b> | <b>91</b> | <b>93</b> | <b>95</b> | <b>95</b> | <b>96</b> | <b>97</b> |

## Comparison of Back Seat Wearing Rates by Age

The large increase in back seat wearing rates since 1994 disguises various patterns of behaviour by different age groups of back seat occupants. The back seat belt wearing rate amongst children has been consistently higher than that for adults. This gap was relatively constant between 1995 and 2001, at 25 to 30 percentage points. However, the marked rise in the adult back seat wearing rates since 2001, coupled with a fall in child seat belt wearing rates over the past year, has contributed to a difference of only 5 percentage points between adults and children in 2010.

Between 1994 and 2010 there have been substantial increases in both rates, with the adult wearing rate increasing by 50 percentage points, from 38% to 88% in 2010, and the rate for children increasing from 61% to 93% in 2010, a rise of 32 percentage points (see table 3, figure 7).

**Figure 7 - Seat Belt Wearing Rates for Back Seat Passengers (Adults, Children and Overall): 1994-2010**



**Table 3: Wearing Rate of Back Seat Passengers by Age (1994 - 2010)**

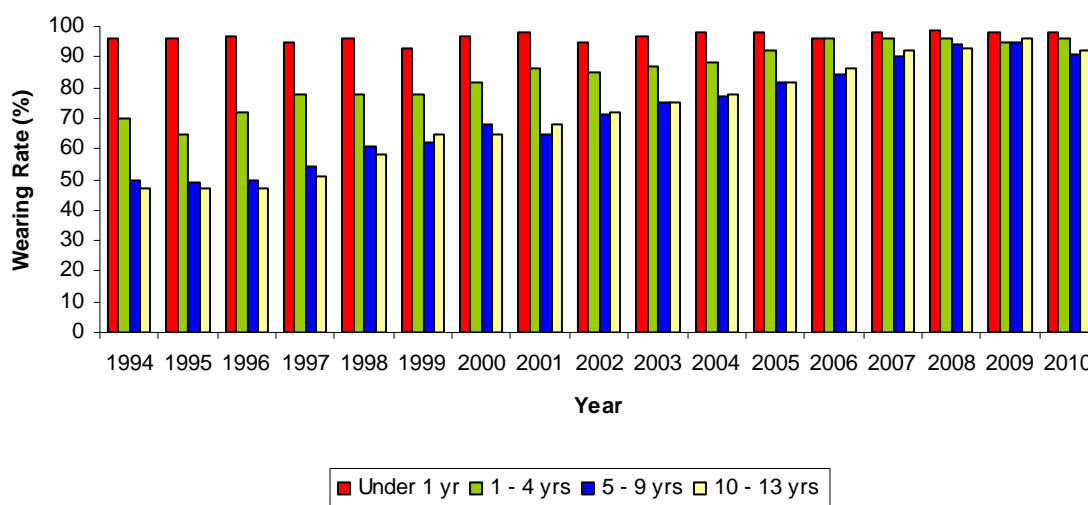
|                     | 1994      | 1995      | 1996      | 1997      | 1998      | 1999      | 2000      | 2001      | 2002      | 2003      | 2004      | 2005      | 2006      | 2007      | 2008      | 2009      | 2010      |
|---------------------|-----------|-----------|-----------|-----------|-----------|-----------|-----------|-----------|-----------|-----------|-----------|-----------|-----------|-----------|-----------|-----------|-----------|
| Under 1 year        | 96        | 96        | 97        | 95        | 96        | 93        | 97        | 98        | 95        | 97        | 98        | 98        | 96        | 98        | 99        | 98        | 98        |
| 1 - 4               | 70        | 65        | 72        | 78        | 78        | 78        | 82        | 86        | 85        | 87        | 88        | 92        | 96        | 96        | 96        | 95        | 96        |
| 5 - 9               | 50        | 49        | 50        | 54        | 61        | 62        | 68        | 65        | 71        | 75        | 77        | 82        | 84        | 90        | 94        | 95        | 91        |
| 10 - 13             | 47        | 47        | 47        | 51        | 58        | 65        | 65        | 68        | 72        | 75        | 78        | 82        | 86        | 92        | 93        | 96        | 92        |
| <b>All Children</b> | <b>61</b> | <b>59</b> | <b>61</b> | <b>65</b> | <b>70</b> | <b>70</b> | <b>74</b> | <b>76</b> | <b>79</b> | <b>81</b> | <b>83</b> | <b>86</b> | <b>90</b> | <b>93</b> | <b>95</b> | <b>96</b> | <b>93</b> |
| 14 - 29             | 35        | 28        | 27        | 34        | 40        | 38        | 46        | 46        | 59        | 60        | 64        | 68        | 75        | 83        | 82        | 87        | 86        |
| 30 - 59             | 37        | 31        | 29        | 38        | 41        | 49        | 49        | 49        | 56        | 66        | 68        | 77        | 78        | 83        | 83        | 86        | 86        |
| 60+                 | 52        | 39        | 42        | 45        | 58        | 57        | 53        | 59        | 69        | 74        | 74        | 85        | 85        | 86        | 88        | 90        | 93        |
| <b>All Adults</b>   | <b>38</b> | <b>31</b> | <b>31</b> | <b>37</b> | <b>44</b> | <b>45</b> | <b>48</b> | <b>49</b> | <b>60</b> | <b>64</b> | <b>67</b> | <b>73</b> | <b>78</b> | <b>84</b> | <b>83</b> | <b>87</b> | <b>88</b> |
| <b>All Ages</b>     | <b>52</b> | <b>50</b> | <b>51</b> | <b>56</b> | <b>61</b> | <b>62</b> | <b>65</b> | <b>67</b> | <b>72</b> | <b>75</b> | <b>77</b> | <b>81</b> | <b>85</b> | <b>90</b> | <b>91</b> | <b>93</b> | <b>92</b> |

## Back Seat Wearing Rates for Children

Throughout the period 1994 to 2010, child back seat passengers aged under one year are consistently among the highest in terms of seat belt wearing rates among all back seat passengers (see table 3, figure 8). When the series began in 1994, the wearing rate for back seat passengers aged between one and four years was 70%, compared to 96% in 2010.

Back seat wearing rates for older children (5 - 9 years and 10 - 13 years) increased from their 1994 rates of 50% and 47% respectively to 95% and 96% in 2009. However, between 2009 and 2010 back seat wearing rates of those aged 5-9 years old significantly fell from 95% to 91%.

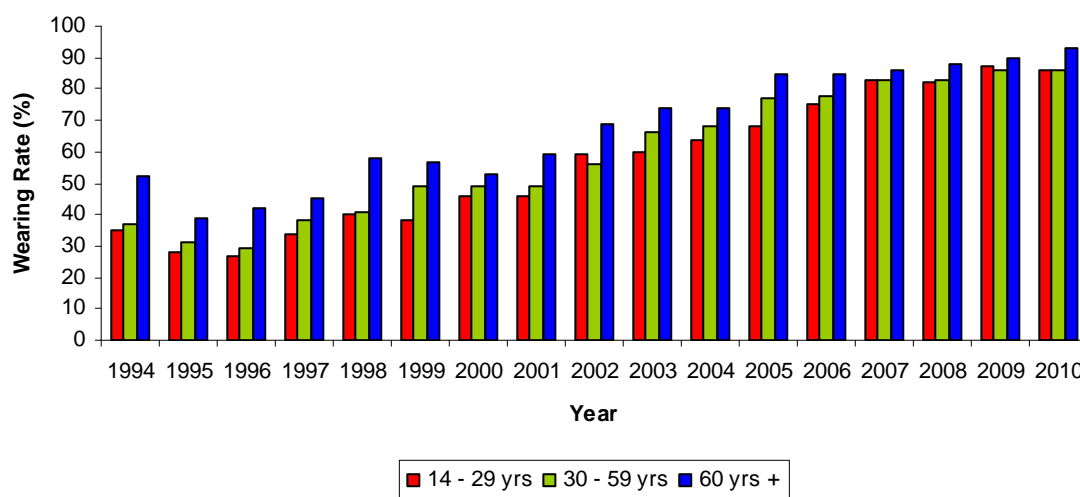
**Figure 8 - Seat Belt Wearing Rate for Child Back Seat Passengers: 1994-2010**



## Back Seat Wearing Rates for Adults

In 1994, the rate for those aged over 60 years was 52%, however since then the rate has increased to 93% in 2010, the highest rate recorded to date. The overall adult back seat wearing rate has more than doubled, increasing from 38% in 1994 to a high of 88% in April 2010 (see figure 9).

**Figure 9 - Seat Belt Wearing Rate for Adult Back Seat Passengers: 1994-2010**



## Influence of Driver upon Wearing Rate of Passengers

There is a marked difference in the seat belt wearing rates depending upon whether or not the driver of the car is wearing a seat belt. In 2010 when the driver of a car wore a seatbelt, 96% of front seat passengers were also restrained. However, when the driver did not wear a seat belt, this figure fell to 63% (table 4).

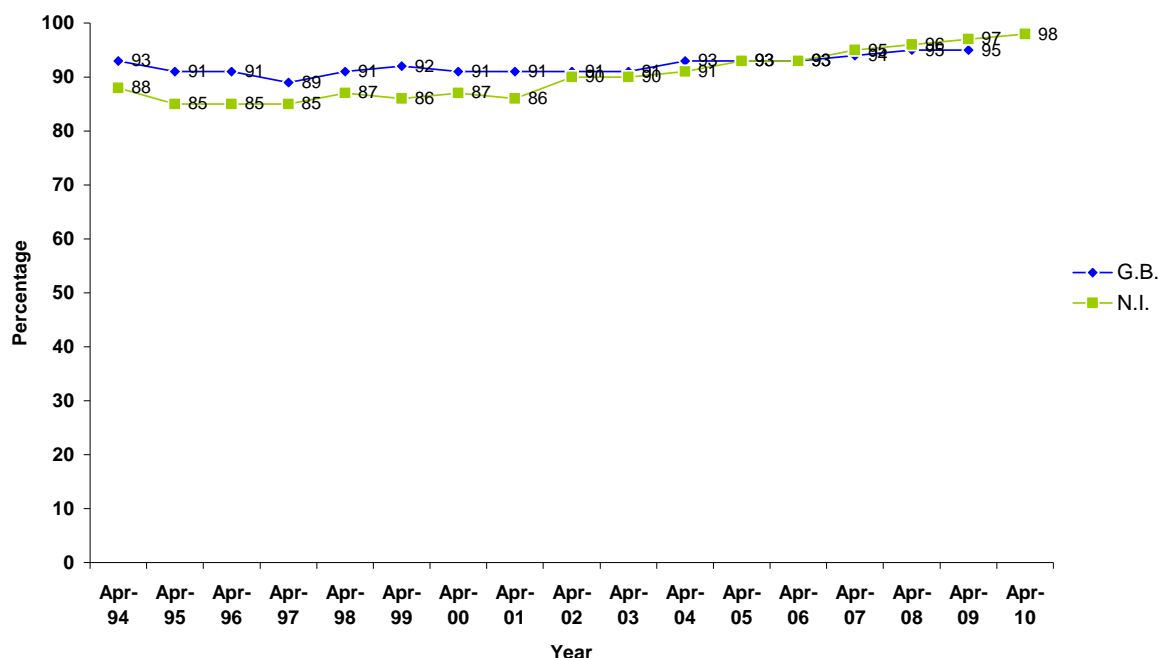
**Table 4: Wearing Rate of Front Seat Passengers Depending Upon Whether or not The Driver is Restrained (1995 - 2010)**

|                     | 1995 | 1996 | 1997 | 1998 | 1999 | 2000 | 2001 | 2002 | 2003 | 2004 | 2005 | 2006 | 2007 | 2008 | 2009 | 2010 |
|---------------------|------|------|------|------|------|------|------|------|------|------|------|------|------|------|------|------|
| Driver Restrained   | 91   | 90   | 91   | 99   | 91   | 91   | 91   | 92   | 92   | 93   | 94   | 95   | 96   | 96   | 96   | 97   |
| Driver Unrestrained | 50   | 49   | 48   | 55   | 49   | 53   | 49   | 56   | 56   | 54   | 55   | 58   | 59   | 60   | 64   | 63   |

## NI and GB Seat Belt wearing rates

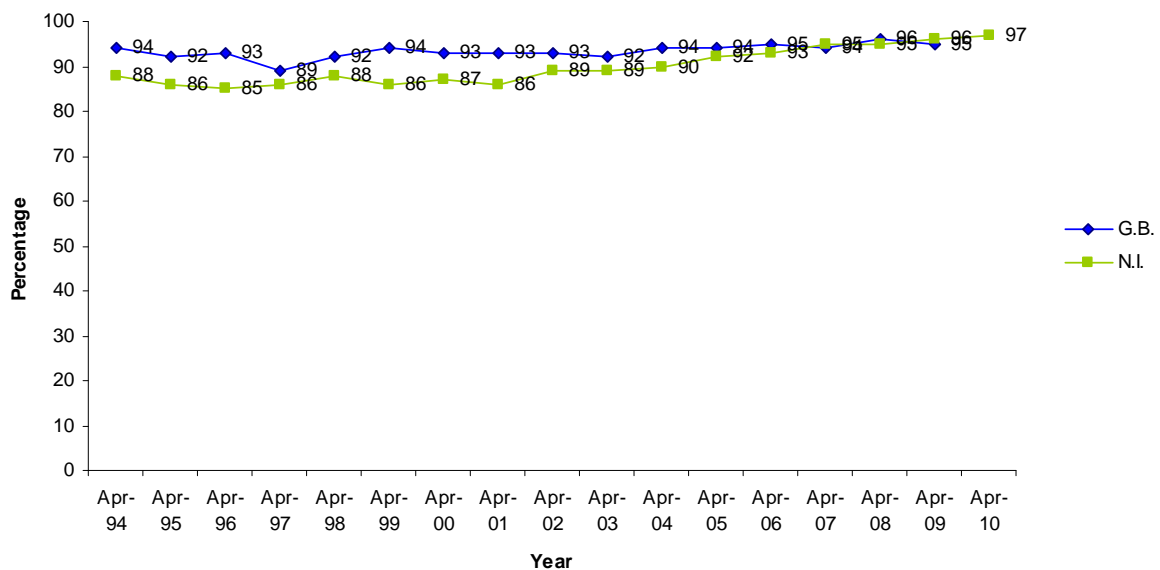
Figures 10-14 show a comparison of driver and passenger restraint wearing rates for Northern Ireland and Great Britain. In Great Britain the observed wearing rate was 95% for drivers, 95% for front seat passengers and 89% for back seat passengers in 2009 (latest figures available). The corresponding figures for Northern Ireland (in April 2010) were 98%, 97% and 92% respectively.

**Figure 10: Comparison of Driver Wearing Rates between Northern Ireland and Great Britain from April 1994 to April 2010**



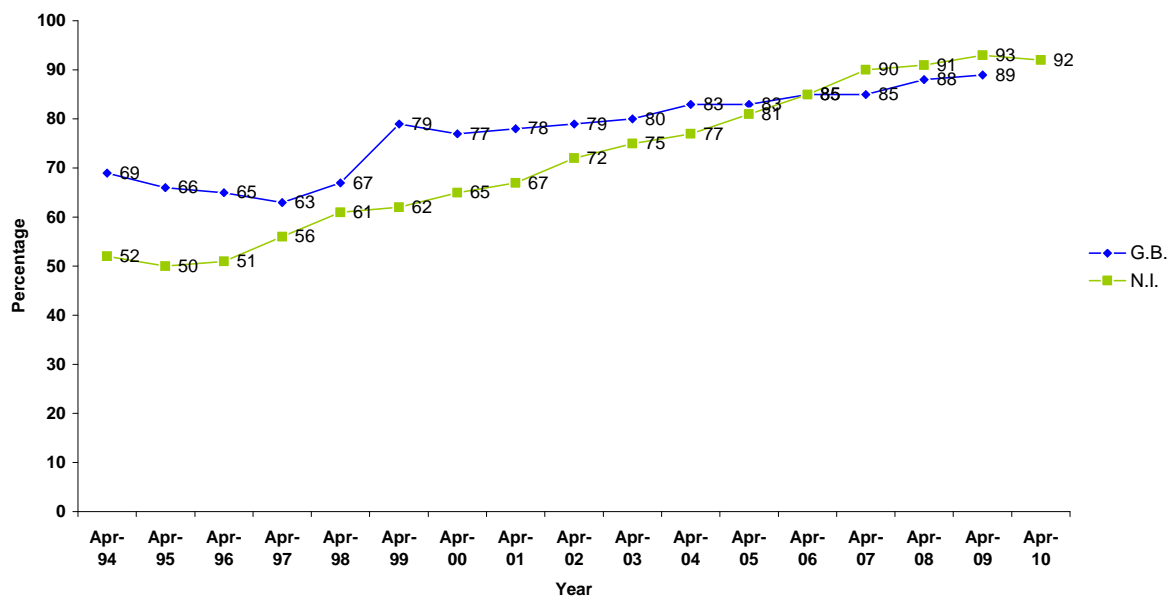
In Northern Ireland front seat passenger wearing rates have increased to 97% in 2010 from 88% in 1994 (see figure 11).

**Figure 11: Comparison of Front Seat Passenger Wearing Rates between Northern Ireland and Great Britain from April 1994 to April 2010**



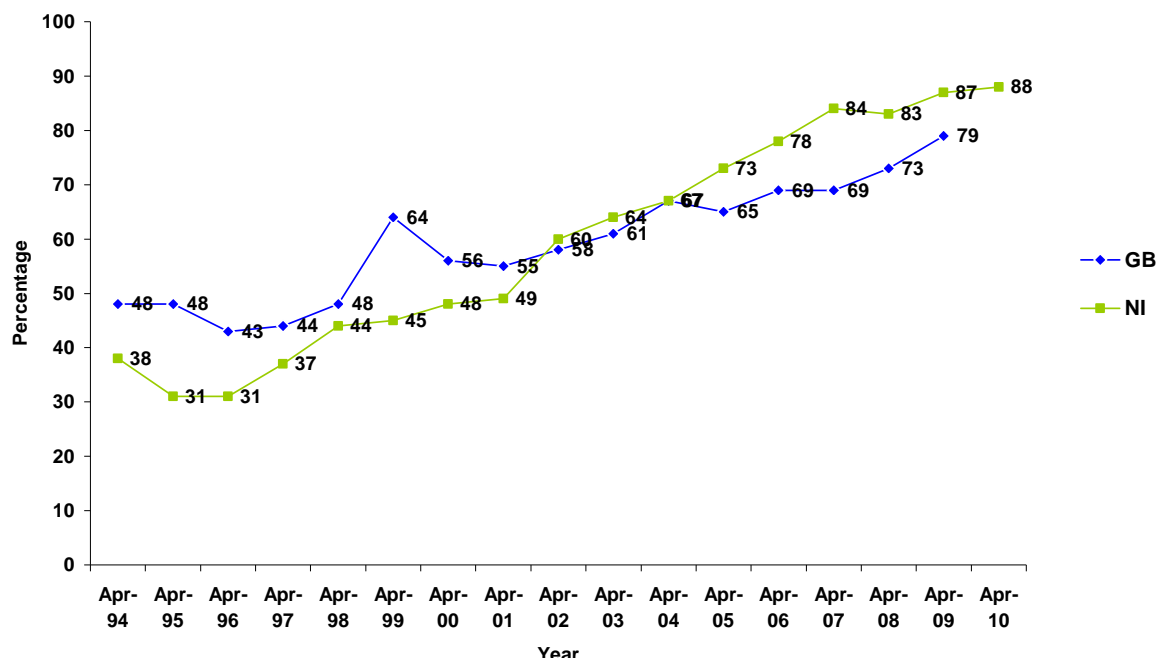
In Northern Ireland back seat passenger wearing rates have increased to around 92% in the latest years of the survey from around 51% in the early years (see figure 12).

**Figure 12: Comparison of Back Seat Passenger Wearing Rates between Northern Ireland and Great Britain from April 1994 to April 2010**



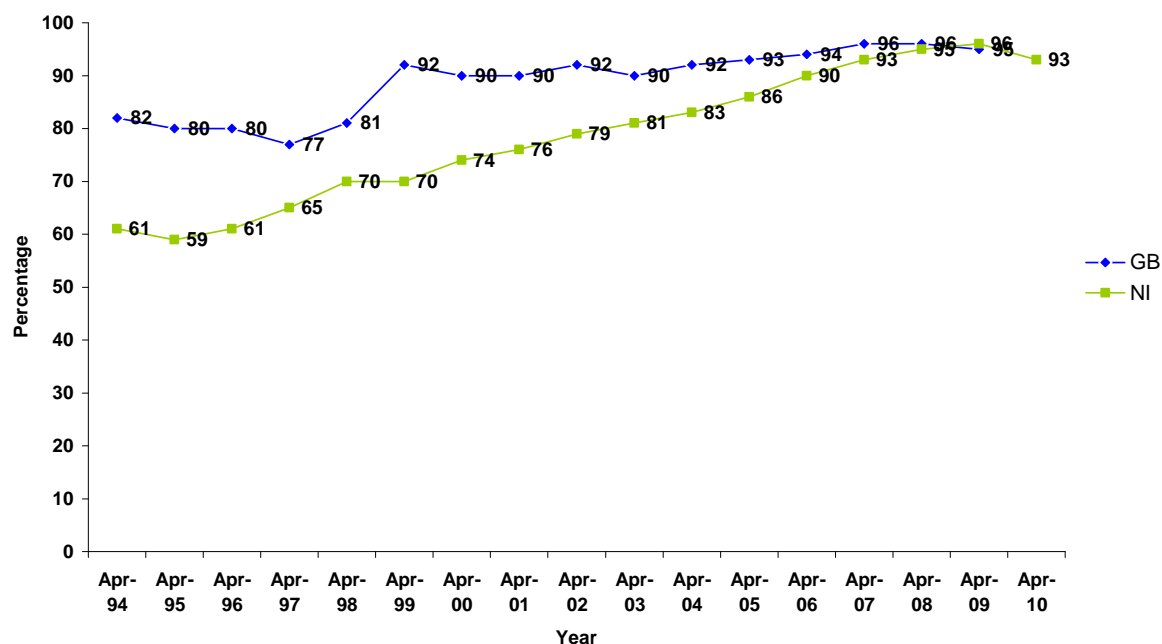
Adult back seat passenger wearing rates in NI have more than doubled since 1994, having reached 88% in April 2010. Since April 2005, the wearing rate in NI has been higher than that observed in GB (see figure 13).

**Figure 13: Comparison of adult (14+) back seat passenger wearing rates between Northern Ireland and Great Britain from April 1994 to April 2010**



The percentage of back seat passengers wearing seat belts has consistently been higher for child passengers than adult passengers, and has risen from around 60% in the early years of the survey to around 95% in recent years (see figure 14).

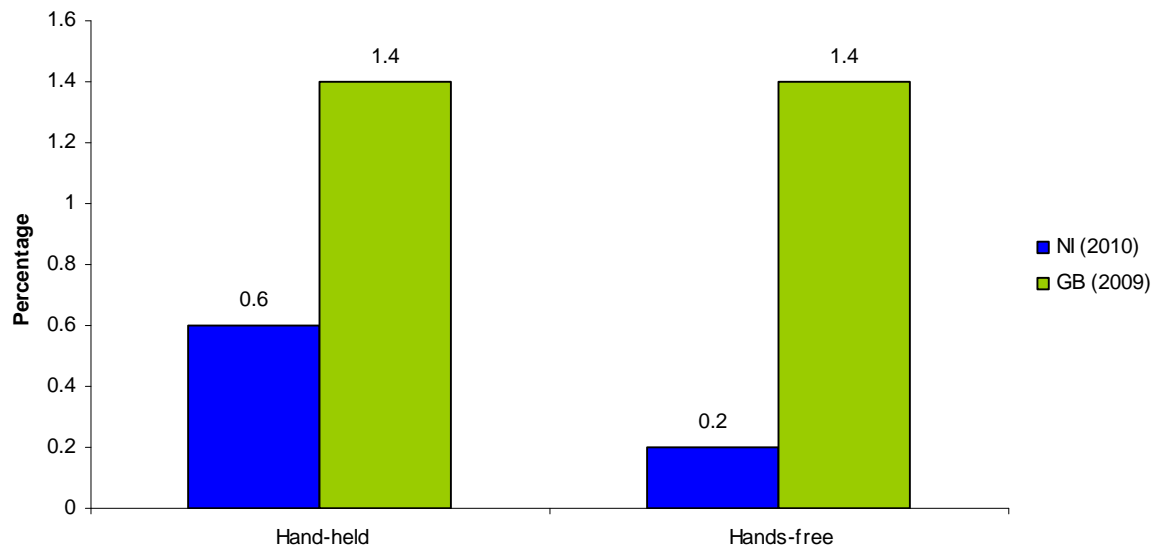
**Figure 14: Comparison of child (0-13) back seat passenger wearing rates between NI and GB from April 1994 to April 2010**



## Mobile phone usage

In Great Britain thirteen Seat Belt Surveys have observed the use of mobile phones to date, however in Northern Ireland this is only the eighth. Nearly 3% of car drivers in Great Britain were observed using a mobile phone in 2009 (1.4% hand-held and 1.4% hands-free). In Northern Ireland, 0.8% of drivers were observed using a mobile phone in April 2010 (0.6% hand-held and 0.2% hands-free) (see figure 15).

**Figure 15: Percentage of drivers observed using a mobile phone**





# Appendix 1: Detailed tables

## Occupancy rates of cars 2010

Table 2: Occupancy rates (%) of cars

| <i>All cars</i><br><i>Base = 100%</i> | Position of Passengers |           | Number of cars observed |
|---------------------------------------|------------------------|-----------|-------------------------|
|                                       | Front Seat             | Back Seat |                         |
|                                       | %                      | %         |                         |
| Occupancy rate                        | 36                     | 16        | 16,057                  |

## Overall wearing rates 2010

Table 3: Wearing rate (%) of drivers

| <i>All</i><br><i>Base = 100%</i> | Type of restraint worn |                  |            |                   |
|----------------------------------|------------------------|------------------|------------|-------------------|
|                                  | Seat Belt used         | Seat Belt unused | Not fitted | Number of drivers |
|                                  | %                      | %                | %          |                   |
| Wearing rate                     | 98                     | 2                | 0          | 16,057            |

Table 4: Wearing rate (%) of all front seat passengers

| <i>All front seat passengers</i><br><i>Base = 100%</i> | Type of restraint |                      |                  |            |                                 |
|--|-------------------|----------------------|------------------|------------|---------------------------------|
|  | Seat Belt used    | Child restraint used | Seat Belt unused | Not fitted | Number of front seat passengers |
|  | %                 | %                    | %                | %          |                                 |
| Wearing rate   | 95                | 2                    | 3                | 0          | 5,749                           |

Table 5: Wearing rate (%) of all back seat passengers

| <i>All back seat passengers</i><br><i>Base = 100%</i> | Type of restraint |                 |                  |            |                           |
|---|-------------------|-----------------|------------------|------------|---------------------------|
|   | Seat Belt used    | Child restraint | Restraint unused | Not fitted | Number of back passengers |
|   | %                 | %               | %                | %          |                           |
| Wearing rate  | 54                | 38              | 8                | 0          | 2,551                     |

**Table 6: Wearing rate (%) of all car occupants**

| <i>All occupants</i><br><i>Base = 100%</i> | Type of restraint |                      |                  |            |                     |
|--|-------------------|----------------------|------------------|------------|---------------------|
|  | Seat Belt used    | Child restraint used | Restraint unused | Not fitted |                     |
|  | %                 | %                    | %                | %          | Number of occupants |
| <b>Wearing rate</b>                        | <b>92</b>         | <b>4</b>             | <b>3</b>         | <b>0</b>   | <b>24,357</b>       |

## Wearing rates by type of site 2010

**Table 7: Wearing rate (%) of drivers by type of site**

| <i>All</i><br><i>Base = 100%</i> | Type of restraint worn |                  |            |                   |
|----------------------------------|------------------------|------------------|------------|-------------------|
|                                  | Seat Belt used         | Seat Belt unused | Not fitted |                   |
|                                  | %                      | %                | %          | Number of drivers |
| <b>Motorwa</b>                   | <b>98</b>              | <b>2</b>         | <b>0</b>   | <b>2,735</b>      |
| <b>Urban</b>                     | <b>97</b>              | <b>3</b>         | <b>0</b>   | <b>6,907</b>      |
| <b>Rural</b>                     | <b>98</b>              | <b>2</b>         | <b>0</b>   | <b>6,415</b>      |
| <b>All site types</b>            | <b>98</b>              | <b>2</b>         | <b>0</b>   | <b>16,057</b>     |

**Table 8: Wearing rate (%) of all front seat passengers by type of site**

| <i>All front seat passengers</i><br><i>Base = 100%</i> | Type of restraint |                      |                  |            |                                 |
|--|-------------------|----------------------|------------------|------------|---------------------------------|
|  | Seat Belt used    | Child restraint used | Seat Belt unused | Not fitted |                                 |
|  | %                 | %                    | %                | %          | Number of front seat passengers |
| <b>Motorway</b>  | <b>95</b>         | <b>1</b>             | <b>3</b>         | <b>0</b>   | <b>972</b>                      |
| <b>Urban</b>   | <b>95</b>         | <b>1</b>             | <b>4</b>         | <b>0</b>   | <b>2,478</b>                    |
| <b>Rural</b>   | <b>95</b>         | <b>3</b>             | <b>2</b>         |            | <b>2,299</b>                    |
| <b>All site types</b>                                  | <b>95</b>         | <b>2</b>             | <b>3</b>         | <b>0</b>   | <b>5,749</b>                    |

**Table 9: Wearing rate (%) of all back seat passengers by type of site**

| <i>All back seat passengers</i><br><i>Base = 100%</i> | Type of restraint |                      |                  |            |                           |
|---|-------------------|----------------------|------------------|------------|---------------------------|
|   | Seat Belt used    | Child restraint used | Restraint unused | Not fitted |                           |
|   | %                 | %                    | %                | %          | Number of back passengers |
| <b>Motorway</b>                                       | <b>64</b>         | <b>26</b>            | <b>10</b>        |            | <b>345</b>                |
| <b>Urban</b>  | <b>54</b>         | <b>35</b>            | <b>11</b>        | <b>0</b>   | <b>1,189</b>              |
| <b>Rural</b>  | <b>50</b>         | <b>46</b>            | <b>4</b>         | <b>0</b>   | <b>1,017</b>              |
| <b>All site types</b>                                 | <b>54</b>         | <b>38</b>            | <b>8</b>         | <b>0</b>   | <b>2,551</b>              |

## Wearing rates by gender 2010

**Table 10: Wearing rate (%) of drivers by gender**

| <i>All</i><br><i>Base = 100%</i> | Type of restraint worn |                  |            |                   |
|----------------------------------|------------------------|------------------|------------|-------------------|
|                                  | Seat Belt used         | Seat Belt unused | Not fitted |                   |
|                                  | %                      | %                | %          | Number of drivers |
| <b>Male</b>                      | 97                     | 3                | 0          | 9,009             |
| <b>Female</b>                    | 98                     | 2                | 0          | 7,048             |
| <b>All</b>                       | 98                     | 2                | 0          | 16,057            |

**Table 11: Wearing rate (%) of all front seat passengers by gender**

| <i>All front seat passengers</i><br><i>Base = 100%</i> | Type of restraint |                      |                  |            |                                 |
|--|-------------------|----------------------|------------------|------------|---------------------------------|
|  | Seat Belt used    | Child restraint used | Restraint unused | Not fitted |                                 |
|  | %                 | %                    | %                | %          | Number of front seat passengers |
| <b>Male</b>  | 93                | 2                    | 4                | 0          | 1,824                           |
| <b>Female</b>  | 96                | 1                    | 3                | 0          | 3,925                           |
| <b>All front passengers</b>                            | 95                | 2                    | 3                | 0          | 5,749                           |

**Table 12: Wearing rate (%) of all back seat passengers by gender**

| <i>All back seat passengers</i><br><i>Base = 100%</i> | Type of restraint |                      |                  |            |                                |
|---|-------------------|----------------------|------------------|------------|--------------------------------|
|   | Seat Belt used    | Child restraint used | Restraint unused | Not fitted |                                |
|   | %                 | %                    | %                | %          | Number of back seat passengers |
| <b>Male</b>   | 52                | 40                   | 8                |            | 1,135                          |
| <b>Female</b>   | 55                | 36                   | 8                | 0          | 1,416                          |
| <b>All back passengers</b>                            | 54                | 38                   | 8                | 0          | 2,551                          |

## Wearing rates by age 2010

**Table 13: Wearing rate (%) of drivers by age**

| <i>All</i><br><i>Base = 100%</i> | Type of restraint worn |                  |            |                   |
|----------------------------------|------------------------|------------------|------------|-------------------|
|                                  | Seat Belt used         | Seat Belt unused | Not fitted |                   |
|                                  | %                      | %                | %          | Number of drivers |
| <b>60+</b>                       | 98                     | 2                | 0          | 2,686             |
| <b>30-59</b>                     | 97                     | 3                | 0          | 8,412             |
| <b>17-29</b>                     | 98                     | 2                | 0          | 4,959             |
| <b>All</b>                       | 98                     | 2                | 0          | 16,057            |

**Table 14: Wearing rate (%) of all front seat passengers by age**

| <i>All front seat passengers</i><br><br><i>Base = 100%</i> | Type of restraint |                      |                  |            |                                 |
|--|-------------------|----------------------|------------------|------------|---------------------------------|
|  | Seat Belt used    | Child restraint used | Restraint unused | Not fitted |                                 |
|  | %                 | %                    | %                | %          | Number of front seat passengers |
| <b>60+</b>   | 97                | 0                    | 3                |            | 1,202                           |
| <b>30-59</b>   | 97                |                      | 3                | 0          | 2,076                           |
| <b>14-29</b>   | 96                | 0                    | 4                | 0          | 1,796                           |
| <b>10-13</b>   | 98                | 1                    | 1                |            | 351                             |
| <b>5-9</b>   | 77                | 20                   | 3                |            | 270                             |
| <b>1-4</b>   | [12]              | [27]                 | [1]              |            | 40                              |
| <b>Under 1</b>   |                   | [14]                 |                  |            | 14                              |
| <b>All front seat passengers</b>                           | 95                | 2                    | 3                | 0          | 5,749                           |

Cell count shown in brackets

**Table 15: Wearing rate (%) of all back seat passengers by age**

| All back seat passengers<br><i>Base = 100%</i> | Type of restraint |                      |                  |            |                           |
|--|-------------------|----------------------|------------------|------------|---------------------------|
|  | Seat Belt used    | Child restraint used | Restraint unused | Not fitted |                           |
|  | %                 | %                    | %                | %          | Number of back passengers |
| <b>60+</b>                                     | 93                |                      | 7                |            | 171                       |
| <b>30-59</b>                                   | 86                |                      | 13               | 1          | 159                       |
| <b>14-29</b>                                   | 86                |                      | 13               | 0          | 417                       |
| <b>10-13</b>                                   | 88                | 3                    | 8                |            | 365                       |
| <b>5-9</b>                                     | 46                | 45                   | 9                |            | 754                       |
| <b>1-4</b>                                     | 7                 | 89                   | 4                | 0          | 577                       |
| <b>Under 1</b>                                 |                   | 98                   | 2                |            | 108                       |
| <b>All back seat passengers</b>                | 54                | 38                   | 8                | 0          | 2,551                     |

## Wearing rates by age and gender 2010

**Table 16: Wearing rate (%) of drivers by age and gender**

| All drivers<br><i>Base = 100%</i> |               | Type of restraint |                  |            |                   |
|-----------------------------------|---------------|-------------------|------------------|------------|-------------------|
|                                   |               | Seat Belt used    | Restraint unused | Not fitted |                   |
|                                   |               | %                 | %                | %          | Number of drivers |
| <b>60+</b>                        | <b>Male</b>   | 98                | 2                | 0          | 1,917             |
|                                   | <b>Female</b> | 99                | 1                |            | 769               |
| <b>30 to 59</b>                   | <b>Male</b>   | 97                | 3                | 0          | 4,939             |
|                                   | <b>Female</b> | 99                | 1                |            | 3,473             |
| <b>17 to 29</b>                   | <b>Male</b>   | 97                | 2                | 0          | 2,153             |
|                                   | <b>Female</b> | 98                | 2                | 0          | 2,806             |
| <b>All Male drivers</b>           |               | 97                | 3                | 0          | 9,009             |
| <b>All Female drivers</b>         |               | 98                | 2                | 0          | 7,048             |

**Table 17: Wearing rate (%) of all front seat passengers by age and gender**

| All front seat passengers<br>Base = 100% |        | Type of restraint worn |                      |                  |            | Number of front seat passengers |
|--|--------|------------------------|----------------------|------------------|------------|---------------------------------|
|  |        | Seat Belt used         | Child restraint used | Restraint unused | Not fitted |                                 |
|  |        | %                      | %                    | %                | %          |                                 |
| 60+                                      | Male   | 95                     | 0                    | 5                |            | 259                             |
|  | Female | 98                     |                      | 2                |            | 943                             |
| 30 to 59                                 | Male   | 94                     |                      | 5                | 0          | 550                             |
|  | Female | 98                     |                      | 2                | 0          | 1,526                           |
| 14 to 29                                 | Male   | 96                     |                      | 4                |            | 670                             |
|  | Female | 97                     | 0                    | 3                | 0          | 1,126                           |
| 10 to 13                                 | Male   | 99                     |                      | 1                |            | 179                             |
|  | Female | 97                     | 1                    | 2                |            | 172                             |
| 5 to 9                                   | Male   | 78                     | 19                   | 3                |            | 148                             |
|  | Female | 76                     | 21                   | 2                |            | 122                             |
| 1 to 4                                   | Male   | [6]                    | [7]                  |                  |            | 13                              |
|  | Female | [6]                    | [20]                 | [1]              |            | 27                              |
| Under                                    | Male   |                        | [5]                  |                  |            | 5                               |
|  | Female |                        | [9]                  |                  |            | 9                               |
| All Male front seat passengers           |        | 93                     | 2                    | 4                | 0          | 1,824                           |
| All Female front seat passengers         |        | 96                     | 1                    | 3                | 0          | 3,925                           |

Cell count shown in brackets

**Table 18: Wearing rate (%) of all back seat passengers by age and gender**

| All back seat passengers<br>Base = 100% |        | Type of restrain worn |                         |                     |            | Number of<br>back<br>passengers |
|---|--------|-----------------------|-------------------------|---------------------|------------|---------------------------------|
|   |        | Seat Belt used        | Child restraint<br>used | Restraint<br>unused | Not fitted |                                 |
|   |        | %                     | %                       | %                   | %          |                                 |
| 60+                                     | Male   | [40]                  |                         | [6]                 |            | 46                              |
|   | Female | 95                    |                         | 5                   |            | 125                             |
| 30 to 59                                | Male   | [46]                  |                         | [7]                 |            | 53                              |
|   | Female | 85                    |                         | 13                  | 2          | 106                             |
| 14 to 29                                | Male   | 84                    |                         | 16                  |            | 192                             |
|   | Female | 88                    |                         | 11                  | 0          | 225                             |
| 10 to 13                                | Male   | 88                    | 4                       | 8                   |            | 168                             |
|   | Female | 89                    | 3                       | 9                   |            | 197                             |
| 5 to 9                                  | Male   | 46                    | 46                      | 8                   |            | 367                             |
|   | Female | 47                    | 45                      | 9                   |            | 387                             |
| 1 to 4                                  | Male   | 9                     | 89                      | 2                   |            | 256                             |
|   | Female | 6                     | 89                      | 5                   | 0          | 321                             |
| Under 1                                 | Male   |                       | [53]                    |                     |            | 53                              |
|   | Female |                       | [53]                    | [2]                 |            | 55                              |
| All male back seat passengers           |        | 52                    | 40                      | 8                   |            | 1,135                           |
| All female back seat passengers         |        | 55                    | 36                      | 8                   | 0          | 1,416                           |

Cell count shown in brackets

## Wearing rates by whether driver is restrained 2010

**Table 19: Wearing rate (%) of all front seat passengers by wearing rate (%) of drivers**

| All front seat passengers<br>Base = 100%   |     | Front seat passenger restrained |      | Number of front<br>passengers |
|--|-----|---------------------------------|------|-------------------------------|
|  |     | Yes                             | No   |                               |
|  |     | %                               | %    |                               |
| Whether<br>restrained                      | Yes | 97                              | 3    | 5,653                         |
|  | No  | [60]                            | [36] | 96                            |
| All drivers with a front seat<br>passenger |     | 97                              | 3    | 5,749                         |

Cell count shown in brackets

**Table 20: Wearing rate (%) of all back seat passengers by wearing rate (%) of drivers**

| <i>All back seat passengers</i><br><i>Base = 100%</i> |     | Back seat passenger restrained |      | Number of back seat passengers |
|---|-----|--------------------------------|------|--------------------------------|
|   |     | Yes                            | No   |                                |
|   |     | %                              | %    |                                |
| Whether restrained                                    | Yes | 92                             | 8    | 2,509                          |
|   | No  | [27]                           | [15] | 42                             |
| All drivers with a back seat passenger                |     | 92                             | 8    | 2,551                          |

Cell count shown in brackets

## Driver wearing rates by number of occupants in car 2010

**Table 21: Wearing rate (%) of drivers by number of occupants in car**

| <i>All drivers</i><br><i>Base = 100%</i> | Type of restraint worn |                  |            |                   |
|--|------------------------|------------------|------------|-------------------|
|  | Seat Belt used         | Seat Belt unused | Not fitted | Number of drivers |
|  | %                      | %                | %          |                   |
| Driver only                              | 97                     | 3                | 0          | 9,796             |
| Driver + 1                               | 98                     | 2                | 0          | 4,799             |
| Driver + 2 passengers                    | 98                     | 2                |            | 997               |
| Driver + 3 passengers                    | 99                     | 1                |            | 348               |
| Driver + 4 or more passengers            | 97                     | 3                |            | 117               |
| All                                      | 98                     | 2                | 0          | 16,057            |



**Table 22: Wearing rate (%) of all drivers by gender and number of occupants in car**

| <i>All drivers</i><br><i>Base = 100%</i> |        | Type of restraint worn by driver |                  |            | Number of drivers |
|--|--------|----------------------------------|------------------|------------|-------------------|
|  |        | Seat Belt used                   | Seat Belt unused | Not fitted |                   |
|  |        | %                                | %                | %          |                   |
| Driver only                              | Male   | 96                               | 3                | 0          | 5,301             |
|  | Female | 98                               | 2                | 0          | 4,495             |
| Driver + 1                               | Male   | 98                               | 2                | 0          | 2,869             |
|  | Female | 99                               | 1                | 0          | 1,930             |
| Driver + 2 passengers                    | Male   | 98                               | 3                |            | 560               |
|  | Female | 99                               | 1                |            | 437               |
| Driver + 3 passengers                    | Male   | 100                              |                  |            | 205               |
|  | Female | 99                               | 1                |            | 143               |
| Driver + 4 or more passengers            | Male   | [72]                             | [2]              |            | 74                |
|  | Female | [42]                             | [1]              |            | 43                |
| All male drivers                         |        | 97                               | 3                | 0          | 9,009             |
| All female drivers                       |        | 98                               | 2                | 0          | 7,048             |

Cell count shown in brackets

**Table 23: Percentage of cars with occupants restrained by the number of occupants in the car**

| <i>All cars</i><br><i>Base = 100%</i> | Number of restrained occupants |    |    |    |    |    | Number of cars |
|---------------------------------------|--------------------------------|----|----|----|----|----|----------------|
|                                       | 0                              | 1  | 2  | 3  | 4  | 5+ |                |
|                                       | %                              | %  | %  | %  | %  | %  |                |
| Driver only                           | 3                              | 97 |    |    |    |    | 9,796          |
| Driver + 1                            | 1                              | 4  | 96 |    |    |    | 4,799          |
| Driver + 2 passengers                 | 1                              | 2  | 7  | 90 |    |    | 997            |
| Driver + 3 passengers                 | 0                              | 0  | 4  | 4  | 91 |    | 348            |
| Driver + 4 or more passengers         |                                | 7  | 9  | 3  | 9  | 73 | 117            |
| All                                   | 2                              | 61 | 29 | 6  | 2  | 1  | 16,057         |

## Mobile phones usage 2010

**Table 24: Percentage of drivers observed using a mobile phone**

| <i>All</i><br><i>Base = 100%</i> | Type of phone |            |             | Number of drivers |
|----------------------------------|---------------|------------|-------------|-------------------|
|                                  | Hand-held     | Hands-free | Neither     |                   |
|                                  | %             | %          | %           |                   |
| <b>All</b>                       | <b>0.6</b>    | <b>0.2</b> | <b>99.2</b> | <b>16,057</b>     |

**Table 25: Percentage of drivers observed using a mobile phone by age**

| <i>All</i><br><i>Base = 100%</i> | Type of phone |            |             | Number of drivers |
|----------------------------------|---------------|------------|-------------|-------------------|
|                                  | Hand-held     | Hands-free | Neither     |                   |
|                                  | %             | %          | %           |                   |
| <b>60+</b>                       | <b>0.4</b>    | <b>0.1</b> | <b>99.4</b> | <b>2,686</b>      |
| <b>30-59</b>                     | <b>0.5</b>    | <b>0.2</b> | <b>99.2</b> | <b>8,412</b>      |
| <b>17-29</b>                     | <b>0.9</b>    | <b>0.2</b> | <b>98.9</b> | <b>4,959</b>      |
| <b>All</b>                       | <b>0.6</b>    | <b>0.2</b> | <b>99.2</b> | <b>16,057</b>     |

**Table 26: Percentage of drivers observed using a mobile phone by type of site**

| <i>All</i><br><i>Base = 100%</i> | Type of phone |            |             | Number of drivers |
|----------------------------------|---------------|------------|-------------|-------------------|
|                                  | Hand-held     | Hands-free | Neither     |                   |
|                                  | %             | %          | %           |                   |
| <b>Motorway</b>                  | <b>1.1</b>    | <b>0.2</b> | <b>98.8</b> | <b>2,735</b>      |
| <b>Urban</b>                     | <b>0.6</b>    | <b>0.2</b> | <b>99.2</b> | <b>6,907</b>      |
| <b>Rural</b>                     | <b>0.5</b>    | <b>0.2</b> | <b>99.3</b> | <b>6,415</b>      |
| <b>All site types</b>            | <b>0.6</b>    | <b>0.2</b> | <b>99.2</b> | <b>16,057</b>     |

**Table 27: Percentage of drivers observed using a mobile phone by gender**

| <i>All drivers</i><br><i>Base = 100%</i> | Type of phone |            |             | Number of drivers |
|--|---------------|------------|-------------|-------------------|
|  | Hand-held     | Hands-free | Neither     |                   |
|  | %             | %          | %           |                   |
| <b>Male</b>                              | <b>0.8</b>    | <b>0.2</b> | <b>99.0</b> | <b>9,009</b>      |
| <b>Female</b>                            | <b>0.5</b>    | <b>0.2</b> | <b>99.4</b> | <b>7,048</b>      |
| <b>All drivers</b>                       | <b>0.6</b>    | <b>0.2</b> | <b>99.2</b> | <b>16,057</b>     |

**Table 28: Percentage of drivers observed using a mobile phone by age and gender**

| <i>All drivers</i><br><i>Base = 100%</i> |               | Type of phone |            |             |                   |
|--|---------------|---------------|------------|-------------|-------------------|
|  |               | Hand-held     | Hands-free | Neither     |                   |
|  |               | %             | %          | %           | Number of drivers |
| <b>60+</b>                               | <b>Male</b>   | <i>0.5</i>    | <i>0.1</i> | <i>99.5</i> | <i>1,917</i>      |
|  | <b>Female</b> | <i>0.4</i>    | <i>0.3</i> | <i>99.3</i> | <i>769</i>        |
| <b>30 to 59</b>                          | <b>Male</b>   | <i>0.7</i>    | <i>0.3</i> | <i>99.0</i> | <i>4,939</i>      |
|  | <b>Female</b> | <i>0.3</i>    | <i>0.2</i> | <i>99.5</i> | <i>3,473</i>      |
| <b>17 to 29</b>                          | <b>Male</b>   | <i>1.3</i>    | <i>0.2</i> | <i>98.5</i> | <i>2,153</i>      |
|  | <b>Female</b> | <i>0.7</i>    | <i>0.1</i> | <i>99.2</i> | <i>2,806</i>      |
| <b>All male drivers</b>                  |               | <i>0.8</i>    | <i>0.2</i> | <i>99.0</i> | <i>9,009</i>      |
| <b>All female drivers</b>                |               | <i>0.5</i>    | <i>0.2</i> | <i>99.4</i> | <i>7,048</i>      |

## Appendix 2

### Number of cars observed by time of session and site

Day: Tuesday

| All cars<br>Base = 100%   | Time  |       |       |       |       |       |       |       | Number<br>of cars<br>observed |
|---------------------------|-------|-------|-------|-------|-------|-------|-------|-------|-------------------------------|
|                           | 08.30 | 09.30 | 10.30 | 11.30 | 14.00 | 15.00 | 16.00 | 17.00 |                               |
| M1 at Yorkgate            | 74    | 71    | 52    | 58    | 67    | 61    | 67    | 78    | 528                           |
| M2 at Duncrue             | 77    | 68    | 28    | 30    | 34    | 41    | 32    | 34    | 344                           |
| M1 at Black s Road        | 53    | 42    | 49    | 43    | 55    | 76    | 68    | 82    | 468                           |
| Antrim Rd/D gall Park Ave | 72    | 54    | 45    | 52    | 62    | 77    | 72    | 82    | 516                           |
| Knock Dual Carriageway    | 79    | 76    | 80    | 74    | 78    | 73    | 81    | 78    | 619                           |
| Saintfield Road           | 88    | 82    | 75    | 82    | 84    | 83    | 88    | 87    | 669                           |
| Derriaghy                 | 89    | 62    | 79    | 71    | 81    | 75    | 80    | 81    | 618                           |
| Strand Rd, L derry        | 36    | 33    | 30    | 44    | 36    | 43    | 49    | 48    | 319                           |
| Anne St, Enniskillen      | 81    | 80    | 82    | 78    | 83    | 81    | 76    | 76    | 637                           |
| Milltown Rd/Shaw s Bridge | 77    | 69    | 83    | 77    | 75    | 80    | 79    | 77    | 617                           |
| Banbridge                 | 79    | 69    | 41    | 59    | 48    | 50    | 58    | 75    | 479                           |
| Hillhead Rd, Ballyclare   | 89    | 76    | 77    | 75    | 72    | 85    | 82    | 84    | 640                           |
| Ballysallagh Rd, Bangor   | 56    | 40    | 39    | 44    | 42    | 50    | 50    | 59    | 380                           |
| A505 Cookstown to Omagh   | 79    | 68    | 76    | 71    | 75    | 71    | 72    | 77    | 589                           |
| Carrickfergus/Greenisland | 76    | 56    | 51    | 45    | 41    | 51    | 51    | 80    | 451                           |
| All sites                 | 1105  | 946   | 887   | 903   | 933   | 997   | 1005  | 1098  | 7874                          |

Day: Saturday

| All cars<br>Base = 100%   | Time  |       |       |       |       |       |       |       | Number<br>of cars<br>observed |
|---------------------------|-------|-------|-------|-------|-------|-------|-------|-------|-------------------------------|
|                           | 08.30 | 09.30 | 10.30 | 11.30 | 14.00 | 15.00 | 16.00 | 17.00 |                               |
| M1 at Yorkgate            | 71    | 73    | 65    | 82    | 81    | 79    | 78    | 76    | 605                           |
| M2 at Duncrue             | 64    | 28    | 45    | 34    | 31    | 43    | 38    | 37    | 320                           |
| M1 at Black s Road        | 20    | 48    | 54    | 70    | 69    | 64    | 75    | 70    | 470                           |
| Antrim Rd/D gall Park Ave | 43    | 53    | 66    | 80    | 86    | 73    | 66    | 69    | 536                           |
| Knock Dual Carriageway    | 84    | 84    | 84    | 89    | 86    | 85    | 83    | 85    | 680                           |
| Saintfield Road           | 83    | 85    | 83    | 81    | 85    | 85    | 87    | 84    | 673                           |
| Derriaghy                 | 79    | 77    | 80    | 83    | 85    | 79    | 84    | 82    | 649                           |
| Strand Rd, L derry        | 27    | 40    | 48    | 40    | 52    | 50    | 41    | 38    | 336                           |
| Anne St, Enniskillen      | 75    | 77    | 87    | 85    | 84    | 86    | 79    | 82    | 655                           |
| Milltown Rd/Shaw s Bridge | 80    | 82    | 80    | 84    | 81    | 89    | 84    | 87    | 667                           |
| Banbridge                 | 53    | 75    | 64    | 70    | 75    | 61    | 70    | 57    | 525                           |
| Hillhead Rd, Ballyclare   | 81    | 81    | 84    | 80    | 78    | 83    | 79    | 82    | 648                           |
| Ballysallagh Rd, Bangor   | 26    | 35    | 47    | 53    | 41    | 48    | 54    | 46    | 350                           |
| A505 Cookstown to Omagh   | 84    | 76    | 84    | 81    | 84    | 79    | 82    | 82    | 652                           |
| Carrickfergus/Greenisland | 88    | 46    | 58    | 36    | 47    | 33    | 76    | 33    | 417                           |
| All sites                 | 958   | 960   | 1029  | 1048  | 1065  | 1037  | 1076  | 1010  | 8183                          |

# Appendix 3

## User Guidance

This section contains some information about the data used in the Northern Ireland Seat Belt Survey including guidance to assist with interpretation.

### General guidance on using the data

Data from this report can be directly compared to data collected in previous reports.

For every percentage value there is a corresponding base number. Users are advised to treat any percentage values with corresponding base numbers less than 100 with caution.

### Data Collection

Fieldwork involved observing stationary traffic and recording details such as gender, estimated age and whether a restraint was being used for any car occupants. Recording takes place in eight half hour sessions between 08:30 and 17:00 on two separate days (one Tuesday and one Saturday) in April.

### Data quality Assessment

Very good – data is collected by the Central Survey Unit (CSU). CSU is the leading social survey research organisation in Northern Ireland and is one of the main business areas of the Northern Ireland Statistics and Research Agency (NISRA), an Agency within the Department of Finance and Personnel. The Unit has a long track record and a wealth of experience in the design, management and analysis of behavioural and attitude surveys in the context of a wide range of social policy issues. CSU procedures are consistent with the Official Statistics Code of Practice (<http://www.statisticsauthority.gov.uk/assessment/code-of-practice/code-of-practice-for-official-statistics.pdf>).

Note that all survey estimates are subject to a degree of error and this must be taken account of when considering results. This error will be reasonably small for the majority of Northern Ireland level results but care should be taken when looking at results based on smaller breakdowns – see technical notes below.

### Technical Notes

- The results presented in this report are based on sample survey data and are therefore subject to a degree of sampling error. This error will be larger in those estimates based on small numbers of cases (see base numbers in tables in Appendix 1). However, any statements made in this report regarding differences between groups, such as males and females, have been tested and are statistically significant at the 5% significance level. This significance level is the criteria for judging whether differences between groups might have arisen by chance. The most common criteria is the 5% level, i.e. the probability being one in twenty that an observed difference might have arisen by chance factors alone.
- The percentages quoted in this report are quoted to the nearest whole number. As a result, not all percentages may add to 100 due to this rounding.

- The wearing rates quoted include seat belt and child restraint where applicable.

## **Notation**

- The following symbols are used :-

|                                     |                 |
|-------------------------------------|-----------------|
| No observations in category         | - cell is empty |
| Value of category is less than 0.5% | - cell is 0%    |

- For categories with a cell total less than 100, counts are shown instead of percentages. All counts are shown in square brackets.

## **Additional Information**

Electronic and hard copies of this bulletin and the full Northern Ireland Seat Belt Survey 2010 Report are available from:

Central Statistics and Research Branch,  
Room 4.02,  
Clarence Court,  
10 - 18 Adelaide Street,  
Belfast, BT2 8GB

Tel: (028) 9054 0808  
Fax: (028) 9054 0782  
E-mail: [csrb@drdni.gov.uk](mailto:csrb@drdni.gov.uk)  
Web: [http://www.doeni.gov.uk/index/information/csrb/csrb\\_statistics.htm](http://www.doeni.gov.uk/index/information/csrb/csrb_statistics.htm)