



# NORTHERN IRELAND HOSPITAL STATISTICS: OUTPATIENT ACTIVITY STATISTICS 2010/11

This publication presents information on activity at consultant led and ICATS outpatient services in Northern Ireland during the year ending 31 March 2011. It details information on New and Review Attendances, Missed Appointments (DNAs), Patient Cancellations (CNAs) and Hospital Cancellations. Data are presented by HSC Trust, hospital and specialty.

**Issue No:** 2

**Date of Publication:**  
11 August 2011

**Theme:**  
Outpatient Activity Statistics in Northern Ireland

**Issued by**  
Hospital Information Branch  
Information & Analysis Directorate  
Department of Health, Social Services & Public Safety  
Stormont Estate  
Belfast  
BT4 3SQ

**Statistician**  
Kerri Burgess  
(028) 90 523264

**Email**  
[kerri.burgess@dhsspsni.gov.uk](mailto:kerri.burgess@dhsspsni.gov.uk)

**Internet**  
[http://www.dhsspsni.gov.uk/index/stats\\_research/hospital-stats/outpatients.htm](http://www.dhsspsni.gov.uk/index/stats_research/hospital-stats/outpatients.htm)

## Contents

	Page
Technical Notes	7
Northern Ireland Outpatient Activity	8
Tables	16
Appendices	97

## Key Points

- During 2010/11, 1,502,611 patients were seen at consultant led services within HSC hospitals in Northern Ireland. This was a decrease of 918 (-0.1%) on the 1,503,529 seen during the previous year (Figure 1 and Tables 8a & 8b).
- 31.5% (473,793) of patients seen during 2010/11 were new attendances, the other 68.5% (1,028,818) being reviews, resulting in a new to review ratio of 1:2.2 (Figure 1 and Tables 1a & 2a).
- Compared to 2009/10, new attendances decreased by 7,552 (-1.6%), whereas review attendances increased by 6,634 (+0.6%) (Figure 1 and Tables 8a & 8b).
- Patients missed a total of 171,740 appointments during 2010/11, giving a DNA rate of 10.3. This was the same as the comparable rate for 2009/10 (Figure 5 and Tables 8a & 8b).
- Patients cancelled 186,260 appointments during 2010/11, a CNA rate of 11.0, which was up 0.3 points on that reported last year (Figure 8 and Tables 8a & 8b).
- Hospitals cancelled 183,597 appointments, a hospital cancellation rate of 10.9, which was down 0.7 on the rate reported for 2009/10 (Figure 10 and Tables 8a & 8b).
- During 2010/11 there were 85,432 patients seen at an ICATS service in Northern Ireland, with 46.9% (40,036) of attendances being new and the other 53.1% (45,396) review (Figure 12 and Tables 59 & 60).
- The DNA rate for ICATS was 8.9, compared to a CNA rate of 10.6 and a Hospital Cancellation rate of 7.6 (Figures 14, 16 & 18 and Tables 59 & 60).

## Reader Information

Purpose	Monitor and report activity at consultant led and ICATS outpatient services in Northern Ireland.
Authors	Kerri Burgess, Rodney Redmond, Laura Smyth.
Publication Date	Thursday 11 <sup>th</sup> August 2011
Reporting Period	1 <sup>st</sup> April 2010 – 31 <sup>st</sup> March 2011
Publication Issue	2
Statistical Quality	Information detailed in this release has been quality assured with HSC Trusts prior to release.
Target audience	DHSSPS, Chief Executives of HSC Boards and Trusts in Northern Ireland, health care professionals, academics, Health & Social Care stakeholders, the media and general public.
Further copies from	<a href="mailto:statistics@dhsspsni.gov.uk">statistics@dhsspsni.gov.uk</a>
Internet address	<a href="http://www.dhsspsni.gov.uk/index/stats_research/hospital-stats.htm">http://www.dhsspsni.gov.uk/index/stats_research/hospital-stats.htm</a>
Price	Free
Copyright	This publication is Crown copyright and may be reproduced free of charge in any format or medium. Any material used must be acknowledged, and the title of the publication specified.

## About the Hospital Information Branch (HIB)

Hospital Information Branch is responsible for the collection, quality assurance, analysis and publication of timely and accurate information derived from a wide range of statistical information returns supplied by the Health & Social Care (HSC) Trusts and the HSC Board. Statistical information is collected routinely from a variety of electronic patient level administrative system and pre-defined EXCEL survey return templates.

The Head of the Branch is the Principal Statistician, Mrs. Laura Smyth. The Branch aims to present information in a meaningful way and provide advice on its uses to customers in the HSC Committee, Professional Advisory Groups, policy branches within the DHSSPS, other Health organisations, academia, private sector organisations, charity/voluntary organisations as well as the general public. The statistical information collected is used to contribute to major exercises such as reporting on the performance of the HSC system, other comparative performance exercises, target setting and monitoring, development of service frameworks as well as policy formulation and evaluation. In addition, the information is used in response to a significantly high volume of Parliamentary / Assembly questions and ad-hoc queries each year.

Information is disseminated through a number of key statistical publications, including: Inpatient Activity, Outpatient Activity, Emergency Care, Mental Health & Learning Disability and Waiting Time Statistics (Inpatient, Outpatient, Diagnostics and Cancer). A detailed list of these publications is available from:

**Website:** [http://www.dhsspsni.gov.uk/index/stats\\_research/hospital-stats.htm](http://www.dhsspsni.gov.uk/index/stats_research/hospital-stats.htm)

## List of Figures

Figure 1: Total attendances at consultant led outpatient services in Northern Ireland (2006/07 to 2010/11).....	8
Figure 2: New to review attendance ratio at consultant led outpatient services in Northern Ireland (2006/07 to 2010/11).....	8
Figure 3: Total number of attendances at consultant led outpatient services in Northern Ireland, by HSC Trust (2010/11).....	8
Figure 4: Total number of attendances at consultant led outpatient services in Northern Ireland, by specialty (2010/11).....	9
Figure 5: New, review and total DNA rates at consultant led outpatient services in Northern Ireland (2009/10 and 2010/11).....	9
Figure 6: Total DNA rate at consultant led outpatient services in Northern Ireland, by HSC Trust (2010/11).....	10
Figure 7: Total DNA rate at consultant led outpatient services in Northern Ireland, by programme of care (2009/10 and 2010/11).....	10
Figure 8: New, review and total CNA rates at consultant led outpatient services in Northern Ireland (2009/10 and 2010/11).....	10
Figure 9: Total CNA rate at consultant led outpatient services in Northern Ireland, by programme of care (2009/10 and 2010/11).....	11
Figure 10: New, review and total hospital cancellation rates at consultant led outpatient services in Northern Ireland (2009/10 and 2010/11).....	11
Figure 11: Total hospital cancellation rate at consultant led outpatient services in Northern Ireland, by programme of care (2009/10 and 2010/11).....	11
Figure 12: Total ICATS attendances in Northern Ireland, by HSC Trust (2010/11).....	12
Figure 13: Total ICATS attendances in Northern Ireland, by specialty (2010/11) .....	12
Figure 14: New, Review & Total DNA rates at ICATS in Northern Ireland (2010/11).....	12
Figure 15: ICATS DNA rates in Northern Ireland, by HSC Trust (2010/11).....	13
Figure 16: New, Review & Total CNA rates at ICATS in Northern Ireland (2010/11).....	13
Figure 17: ICATS CNA rates in Northern Ireland, by HSC Trust (2010/11).....	13
Figure 18: New, Review & Total hospital cancellation rates at ICATS in Northern Ireland (2010/11).....	14
Figure 19: ICATS hospital cancellation rates in Northern Ireland, by HSC Trust (2010/11).....	14

## List of Tables

Table 1a: Activity by Hospital/HSC Trust, 2010/11.....	16
Table 1b: Reason for Appointment Cancellation by HSC Trust, 2010/11.....	18
Table 2a: Activity by Specialty, 2010/11.....	19
Table 2b: Reason for Appointment Cancellation by Specialty, 2010/11.....	21
Table 3: Acute Services (POC 1) - Activity by Hospital/HSC Trust, 2010/11.....	25
Table 4: Maternity and Child Health (POC 2) - Activity by Hospital/HSC Trust, 2010/11.....	27
Table 5: Elderly Care (POC 4) - Activity by Hospital/HSC Trust, 2010/11.....	29
Table 6: Mental Health (POC 5) - Activity by Hospital/HSC Trust, 2010/11.....	31
Table 7: Learning Disability (POC 6) - Activity by Hospital/HSC Trust, 2010/11.....	32
Table 8a: Activity Trends by Programme of Care, 2006/07 to 2010/11.....	33
Table 8b: Activity Trends by HSC Trust, 2006/07 to 2010/11.....	35
Table 9: Specialty 100 - Activity by Hospital/HSC Trust for General Surgery, 2010/11.....	37
Table 10: Specialty 101 - Activity by Hospital/HSC Trust for Urology, 2010/11.....	39
Table 11: Specialty 110 - Activity by Hospital/HSC Trust for Trauma and Orthopaedic (T&O) Surgery, 2010/11....	40
Table 12: Specialty 120 - Activity by Hospital/HSC Trust for Ear, Nose and Throat (ENT), 2010/11.....	41
Table 13: Specialty 130 - Activity by Hospital/HSC Trust for Ophthalmology, 2010/11.....	43
Table 14: Specialty 140 - Activity by Hospital/HSC Trust for Oral Surgery, 2010/11.....	44
Table 15: Specialty 141 - Activity by Hospital/HSC Trust for Restorative Dentistry, 2010/11.....	45
Table 16: Specialty 142 - Activity by Hospital/HSC Trust for Paediatric Dentistry, 2010/11.....	46
Table 17: Specialty 143 - Activity by Hospital/HSC Trust for Orthodontics, 2010/11.....	47
Table 18: Specialty 150 - Activity by Hospital/HSC Trust for Neurosurgery, 2010/11.....	48
Table 19: Specialty 160 - Activity by Hospital/HSC Trust for Plastic Surgery, 2010/11.....	49
Table 20: Specialty 170 - Activity by Hospital/HSC Trust for Cardiac Surgery, 2010/11.....	50
Table 21: Specialty 171 - Activity by Hospital/HSC Trust for Paediatric Surgery, 2010/11.....	51
Table 22: Specialty 172 - Activity by Hospital/HSC Trust for Thoracic Surgery, 2010/11.....	52
Table 23: Specialty 180 - Activity by Hospital/HSC Trust for Accident and Emergency, 2010/11.....	53
Table 24: Specialty 190 - Activity by Hospital/HSC Trust for Anaesthetics, 2010/11.....	54
Table 25: Specialty 191 - Activity by Hospital/HSC Trust for Pain Management, 2010/11.....	55
Table 26: Specialty 300 - Activity by Hospital/HSC Trust for General Medicine, 2010/11.....	56
Table 27: Specialty 301 - Activity by Hospital/HSC Trust for Gastroenterology, 2010/11.....	58
Table 28: Specialty 302 - Activity by Hospital/HSC Trust for Endocrinology, 2010/11.....	59
Table 29: Specialty 303 - Activity by Hospital/HSC Trust for Haematology (Clinical), 2010/11.....	60
Table 30: Specialty 310 - Activity by Hospital/HSC Trust for Audiological Medicine, 2010/11.....	61
Table 31: Specialty 311 - Activity by Hospital/HSC Trust for Clinical Genetics, 2010/11.....	62
Table 32: Specialty 314 - Activity by Hospital/HSC Trust for Rehabilitation, 2010/11.....	63
Table 33: Specialty 315 - Activity by Hospital/HSC Trust for Palliative Medicine, 2010/11.....	64
Table 34: Specialty 320 - Activity by Hospital/HSC Trust for Cardiology, 2010/11.....	65
Table 35: Specialty 330 - Activity by Hospital/HSC Trust for Dermatology, 2010/11.....	66
Table 36: Specialty 340 - Activity by Hospital/HSC Trust for Thoracic Medicine, 2010/11.....	68
Table 37: Specialty 360 - Activity by Hospital/HSC Trust for Genito-Urinary Medicine, 2010/11.....	69

Table 38: Specialty 361 - Activity by Hospital/HSC Trust for Nephrology, 2010/11.....	70
Table 39: Specialty 370 - Activity by Hospital/HSC Trust for Medical Oncology, 2010/11.....	71
Table 40: Specialty 400 - Activity by Hospital/HSC Trust for Neurology, 2010/11.....	72
Table 41: Specialty 401 - Activity by Hospital/HSC Trust for Clinical Neuro-Physiology, 2010/11.....	73
Table 42: Specialty 410 - Activity by Hospital/HSC Trust for Rheumatology, 2010/11.....	74
Table 43: Specialty 420 - Activity by Hospital/HSC Trust for Paediatrics, 2010/11.....	75
Table 44: Specialty 421 - Activity by Hospital/HSC Trust for Paediatric Neurology, 2010/11.....	77
Table 45: Specialty 430 - Activity by Hospital/HSC Trust for Geriatric Medicine, 2010/11.....	78
Table 46: Specialty 450 - Activity by Hospital/HSC Trust for Dental Medicine Specialties, 2010/11.....	79
Table 47: Specialty 502 - Activity by Hospital/HSC Trust for Gynaecology, 2010/11.....	80
Table 48: Specialty 510 - Activity by Hospital/HSC Trust for Obstetrics (Ante Natal), 2010/11.....	82
Table 49: Specialty 520 - Activity by Hospital/HSC Trust for Obstetrics (Post Natal), 2010/11.....	84
Table 50: Specialty 700 - Activity by Hospital/HSC Trust for Learning Disability, 2010/11.....	85
Table 51: Specialty 710 - Activity by Hospital/HSC Trust for Mental Illness, 2010/11.....	86
Table 52: Specialty 711 - Activity by Hospital/HSC Trust for Child and Adolescent Psychiatry, 2010/11.....	87
Table 53: Specialty 713 - Activity by Hospital/HSC Trust for Psychotherapy, 2010/11.....	88
Table 54: Specialty 715 - Activity by Hospital/HSC Trust for Old Age Psychiatry, 2010/11.....	89
Table 55: Specialty 800 - Activity by Hospital/HSC Trust for Clinical Oncology, 2010/11.....	90
Table 56: Specialty 822 - Activity by Hospital/HSC Trust for Chemical Pathology, 2010/11.....	91
Table 57: Specialty 823 - Activity by Hospital/HSC Trust for Haematology, 2010/11.....	92
Table 58: Specialty 990 - Activity by Hospital/HSC Trust for Joint Consultant Clinics, 2010/11.....	93
Table 59: ICATS Activity by Specialty/HSC Trust, 2010/11.....	94
Table 60: ICATS Activity by Specialty, 2010/11.....	96

## Technical Notes

This statistics release is the second of an annual series presenting information on activity at consultant led outpatient services in Northern Ireland. Historically, this information on new and review attendances, missed appointments (DNAs), patient cancellations (CNAs) and hospital cancellations was included within the NI Hospital Statistics publication; however, this publication has now been discontinued.

In addition, for the first time, information is presented on activity at Integrated Clinical Assessment and Treatment Services (ICATS) in Northern Ireland.

### Data Collection

The information presented in this publication derives from statistical returns (listed below) provided by HSC Trusts and Hospitals.

- Quarterly Outpatient Activity Return (QOAR), Parts 1 and 2;
- Quarterly ICATS Activity Return (QIAR).

### Rounding

Percentages have been rounded to whole numbers and as a consequence some percentages may not sum to 100.

### Data Quality

All information presented in this publication has been validated and quality assured by HSC Trusts prior to publication. HSC Trusts are given a set period of time to submit the information to HIB. Following submission, HIB perform a series of checks to verify that information is consistent both within and across returns. Trend analyses are used to monitor annual variations and emerging trends. Queries arising from validation checks are presented to HSC Trusts for clarification and if required, returns may be amended and/or re-submitted.

Finally, prior to the publication of this information, the data is presented to HSC Trusts for final sign-off.

## A National Statistics Publication

National Statistics are produced to a high professional standard set out in the Code of Practice for Official Statistics. They undergo regular quality assurance reviews to ensure that they meet customer needs. They are produced free from any political interference. As we want to engage with users of our statistics, we invite you to feedback your comments on this publication to:

**Kerri Burgess**

**Email:** [kerri.burgess@dhsspsni.gov.uk](mailto:kerri.burgess@dhsspsni.gov.uk)

**Tel:** (028) 90 523264

### Outpatient Activity Information Elsewhere in the United Kingdom

While it is our intention to direct users to outpatient activity information elsewhere in the UK, users should be aware that outpatient activity information in other administrations are not always measured in a comparable manner to those in Northern Ireland. Details of the outpatient activity information published elsewhere in the UK can be found as detailed below.

#### England

<http://www.ic.nhs.uk/statistics-and-data-collections/hospital-care/outpatients>

[http://www.dh.gov.uk/en/Publicationsandstatistics/Statistics/Perfomancedataandstatistics/HospitalActivityStatistics/DH\\_077454](http://www.dh.gov.uk/en/Publicationsandstatistics/Statistics/Perfomancedataandstatistics/HospitalActivityStatistics/DH_077454)

#### Scotland

<http://www.isdscotland.org/Health-Topics/Hospital-Care/Outpatient-Activity/>

#### Wales

<http://wales.gov.uk/topics/statistics/theme/health/nhs-outpatient/?lang=en>

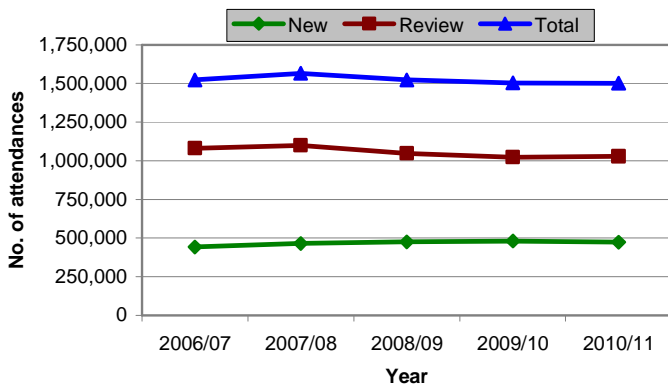
## Northern Ireland Outpatient Activity Outpatient Services

Data contained in this publication relate to activity at consultant led outpatient services and Integrated Clinical Assessment and Treatment Services (ICATS) within Health and Social Care hospitals in Northern Ireland during 2010/11.

### Attendances<sup>1</sup>

During 2010/11, a total of 1,502,611 patients were seen at consultant led outpatient services within HSC hospitals in Northern Ireland. This was a decrease of 918 (-0.1%) on the 1,503,529 seen during the previous year, and was also down 21,061 (-1.4%) on the number seen in 2006/07 (Figure 1 & Tables 8a & 8b).

**Figure 1: Total attendances at consultant led outpatient services in Northern Ireland (2006/07 to 2010/11)**

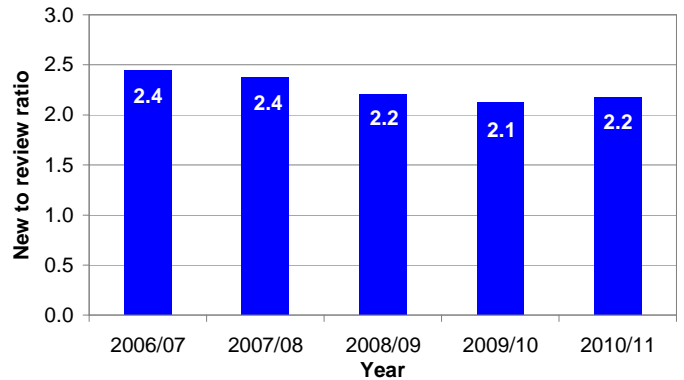


Source: QOAR (Part 1)

Some 31.5% (473,793) of patients seen during 2010/11 were new attendances, with the other 68.5% (1,028,818) being review attendances. This equated to a new to review ratio of 1:2.2, meaning that for every patient attending a new appointment, there were 2.2 that attended a review appointment (Figure 2 & Tables 8a & 8b).

Compared to 2009/10, new attendances decreased by 7,552 (-1.6%), whereas review attendances increased by 6,634 (+0.6%) (Figure 1 & Tables 8a & 8b).

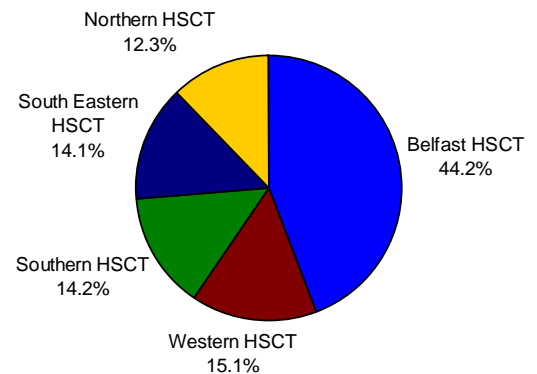
**Figure 2: New to review attendance ratio at consultant led outpatient services in Northern Ireland (2006/07 to 2010/11)**



Source: QOAR (Part 1)

Belfast HSC Trust accounted for 664,582, or 44.2% of the total attendances in Northern Ireland during 2010/11. This was followed by the Western HSC Trust with 227,407 (15.1%), Southern HSC Trust with 213,870 (14.2%), South Eastern HSC Trust with 211,436 (14.1%) and the Northern HSC Trust with 185,316 (12.3%) (Figure 3 & Tables 1a & 8b).

**Figure 3: Total number of attendances at consultant led outpatient services in Northern Ireland, by HSC Trust (2010/11)**



Source: QOAR (Part 1)

The majority of attendances during 2010/11, some 1,353,293 (90.1%), were within the Acute Services Programme of Care, followed by the Maternity and Child Health, 100,852 (6.7%), Elderly Care, 29,510 (2.0%), Mental Health, 12,841 (0.9%) and Learning Disability, 6,115 (0.4%) Programmes of Care (Table 8a).

<sup>1</sup> Refer to Explanatory Notes Points 1 and 7 & 8



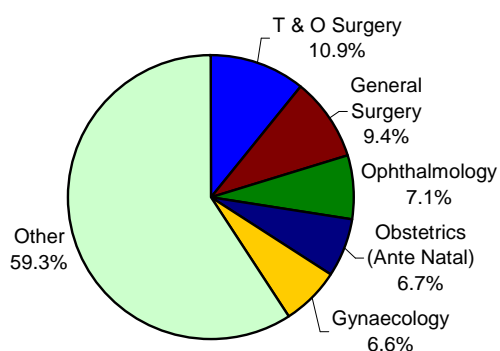
Comparing 2010/11 with 2006/07, attendances decreased in three of the five Programmes of Care, in Mental Health (-86.9%), in Elderly Care (-16.2%), and in Maternity and Child Health (-9.9%), while increases were reported in the Learning Disability (+19.5%) and Acute Services (+6.3%) Programmes of Care (Table 8a).

There was a decrease in attendances, from 2009/10, within two of the five Programmes of Care, in Mental Health (-36.8%) and Maternity and Child Health (-3.8%), while Learning Disability, Elderly Care and the Acute Services Programmes of Care increased by 12.2%, 10.6% and 0.5% respectively (Table 8a).

The main reason for the decrease reported in the Mental Health Programme of Care, over the last year, was the continued reclassification of a number of consultant led outpatient services to a Multi-Disciplinary Team model of service delivery. Attendances at Multi-Disciplinary Teams are not included within the outpatient figures.

In 2010/11, the five specialties with the highest number of attendances were Trauma and Orthopaedic Surgery (10.9%), General Surgery (9.4%), Ophthalmology (7.1%), Obstetrics (Ante Natal) (6.7%) and Gynaecology (6.6%) (Figure 4 & Table 2a).

**Figure 4: Total number of attendances at consultant led outpatient services in Northern Ireland, by specialty (2010/11)**



Source: QOAR (Part 1)

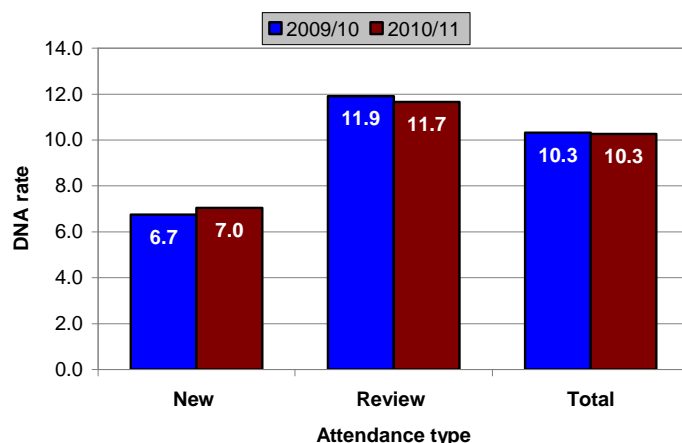
The five specialties with the lowest number of attendances during 2010/11 were Psychotherapy, Audiological Medicine and Obstetrics (Post Natal) (all <0.1%) and Paediatric Neurology and Anaesthetics, both 0.1% (Table 2a).

### Missed Appointments / Did Not Attend (DNA)<sup>2</sup>

Patients missed a total of 171,740 outpatient appointments during 2010/11. This equated to a DNA rate of 10.3, the same as the comparable rate for 2009/10 (Figure 5 & Tables 8a & 8b).

The DNA rate was higher for review appointments (11.7) than for new appointments (7.0) during 2010/11. This compared to respective rates of 11.9 and 6.7 during 2009/10 (Figure 5 & Table 1a).

**Figure 5: New, review and total DNA rates at consultant led outpatient services in Northern Ireland (2009/10 and 2010/11)**

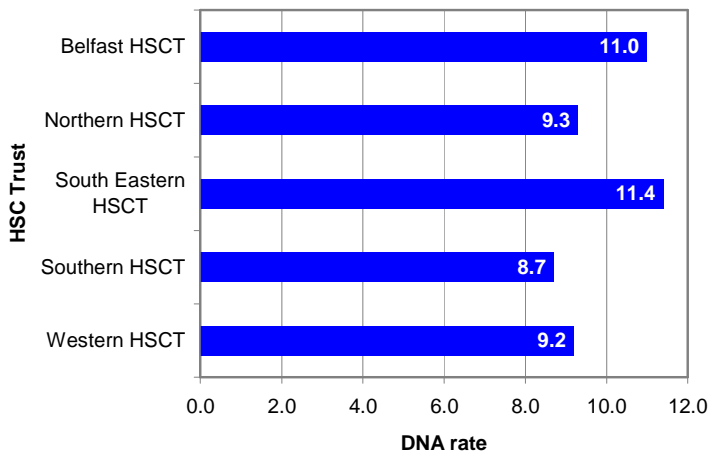


Source: QOAR (Part 1)

During 2010/11, the South Eastern and Belfast HSC Trusts had the highest DNA rate, at 11.4 and 11.0 respectively, followed by the Northern HSC Trust (9.3), Western HSC Trust (9.2) and Southern HSC Trust (8.7) (Figure 6 & Table 1a).

<sup>2</sup> Refer to Explanatory Notes 1, 7-8 and Appendix 4

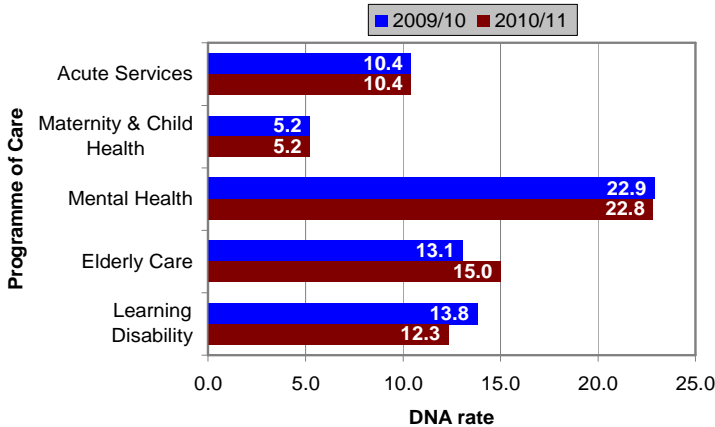
**Figure 6: Total DNA rate at consultant led outpatient services in Northern Ireland, by HSC Trust (2010/11)**



Source: QOAR (Part 1)

The Programme of Care with the highest DNA rate during 2010/11 was Mental Health (22.8) followed by Elderly Care (15.0), Learning Disability (12.3), Acute Services (10.4) and Maternity and Child Health (5.2) (Figure 7 & Table 8a).

**Figure 7: Total DNA rate at consultant led outpatient services in Northern Ireland, by programme of care (2009/10 and 2010/11)**



Source: QOAR (Part 1)

The Mental Health POC had the highest DNA rate for new attendances (29.1), followed by Learning Disability (20.3), Elderly Care (10.9), Acute Services (7.0) and Maternity and Child Health (4.0). The review DNA rate was also highest within the Mental Health POC (21.9), followed by Elderly Care (16.6), Acute Services (11.9),

Learning Disability (11.6) and Maternity and Child Health (5.6) (Tables 3 - 7).

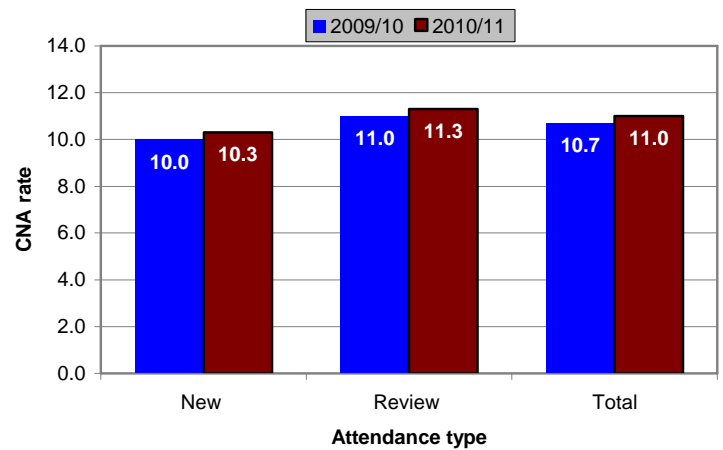
The five specialties with the highest DNA rates during 2010/11 were, Mental Illness (31.7), Paediatric Dentistry (27.0), Audiological Medicine (22.8), Accident and Emergency (21.6) and Obstetrics (Post Natal) (20.1) (Table 2a).

### Appointment Cancellations<sup>3</sup>

#### Patient Cancellations / Could Not Attends (CNA)

Patients cancelled a total of 186,260 outpatient appointments during 2010/11. This equated to a CNA rate of 11.0, compared with a CNA rate of 10.7 reported for 2009/10. The CNA rate during 2010/11 was higher for review (11.3) than new attendances (10.3) (Figure 8 & Table 1a).

**Figure 8: New, review and total CNA rates at consultant led outpatient services in Northern Ireland (2009/10 and 2010/11)**



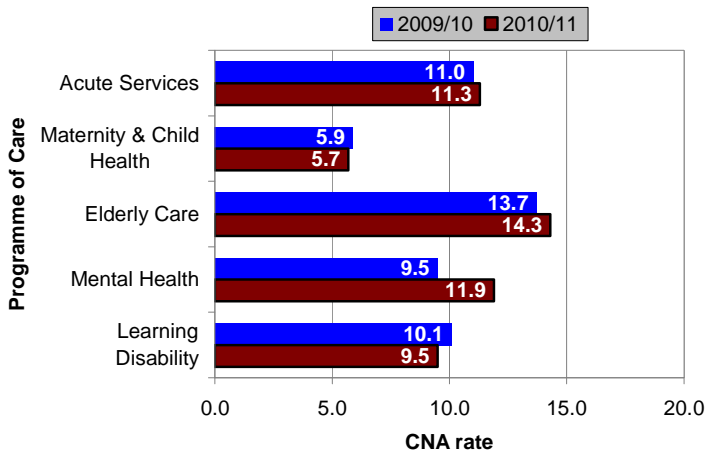
Source: QOAR (Part 1)

The Northern HSC Trust had the highest CNA rate during 2010/11 (12.5), followed by the Belfast HSC Trust (11.4), Western HSC Trust (11.2), South Eastern HSC Trust (9.8) and Southern HSC Trust (9.5) (Tables 1a & 8b).

The Programme of Care with the highest CNA rate was Elderly Care (14.3) followed by Mental Health (11.9), Acute Services (11.3), Learning Disability (9.5) and Maternity and Child Health (5.7) (Figure 9 & Table 8a).

<sup>3</sup> Refer to Explanatory Notes 1-3, 7-8 and Appendix 4.

**Figure 9: Total CNA rate at consultant led outpatient services in Northern Ireland, by programme of care (2009/10 and 2010/11)**



Source: QOAR (Part 1)

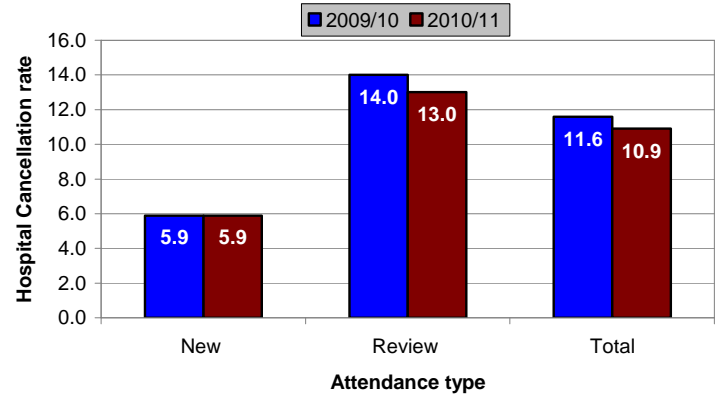
The five specialties with the highest CNA rate in 2010/11 were Chemical Pathology (20.5), Dental Medicine Specialties (19.1), Obstetrics (Post Natal) (17.4), Gastroenterology (16.0) and Child and Adolescent Psychiatry (15.5) (Table 2a).

Of the 186,260 appointments cancelled by patients, the majority, 127,963 (68.7%) were still required, resulting in HSC Trusts rebooking these appointments for an alternative date (Table 1b).

### Hospital Cancellations

Hospitals cancelled a total of 183,597 outpatient appointments during 2010/11. This equated to a Hospital Cancellation rate of 10.9, down 0.7 points on the rate reported for 2009/10 (11.6). The Hospital Cancellation rate during 2010/11 was higher for review (13.0) than new attendances (5.9) (Figure 10 & Table 1a).

**Figure 10: New, review and total hospital cancellation rates at consultant led outpatient services in Northern Ireland (2009/10 and 2010/11)**

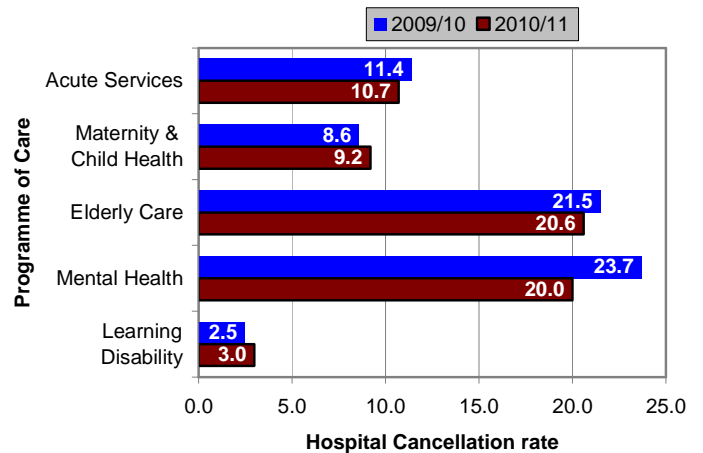


Source: QOAR (Part 1)

The highest Hospital Cancellation rate during 2010/11 was recorded at the South Eastern HSC Trust (14.2), followed by the Northern HSC Trust (13.8), the Western HSC Trust (11.5), the Belfast HSC Trust (10.0) and the Southern HSC Trust (6.8) (Tables 1a & 8b).

The Programme of Care with the highest Hospital Cancellation rate in 2010/11 was Elderly Care (20.6), followed by Mental Health (20.0), Acute Services (10.7), Maternity and Child Health (9.2) and Learning Disability (3.0), although the Hospital Cancellation rates in the Elderly Care, Mental Health and Acute Services Programmes of Care have all fallen compared to 2009/10 (Figure 11 & Table 8a).

**Figure 11: Total hospital cancellation rate at consultant led outpatient services in Northern Ireland, by programme of care (2009/10 and 2010/11)**



Source: QOAR (Part 1)

The five specialties with the highest Hospital Cancellation rate in 2010/11 were Old Age Psychiatry (33.7), Mental Illness (33.5), Neurosurgery (33.4), Dental Medicine Specialties (29.2) and Psychotherapy (20.3) (Table 2a).

### Integrated Clinical Assessment and Treatment Services (ICATS)<sup>4</sup>

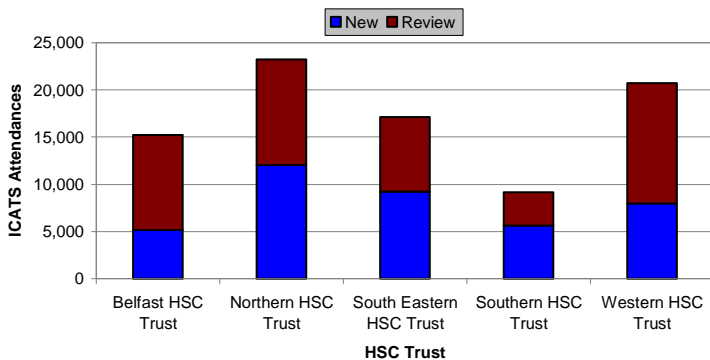
#### ICATS Attendances

ICATS data are published for the first time this year. During 2010/11, a total of 85,432 patients were seen at an ICATS service in Northern Ireland.

Some 46.9% (40,036) of patients seen during 2010/11 were new attendances, with the other 53.1% (45,396) being review attendances. This equated to a new to review ratio of 1:1.1, meaning that for every patient attending a new ICATS appointment, there were 1.1 that attended a review appointment (Tables 59 & 60).

Northern HSC Trust accounted for 23,209, or 27.2%, of the total ICATS attendances in Northern Ireland during 2010/11. This was followed by the Western HSC Trust with 20,709 (24.2%), South Eastern HSC Trust with 17,118 (20.0%), Belfast HSC Trust with 15,241 (17.8%) and the Southern HSC Trust with 9,155 (10.7%) (Figure 12 & Table 59).

**Figure 12: Total ICATS attendances in Northern Ireland, by HSC Trust (2010/11)**

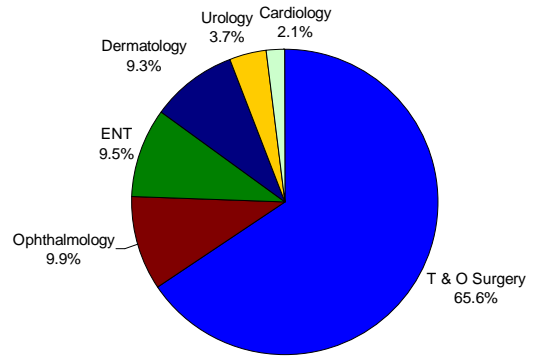


Source: QIAR

<sup>4</sup> Refer to Explanatory Notes 5-8 and Appendix 4.

Trauma and Orthopaedic Surgery had the highest number of ICATS attendances (65.6%), followed by Ophthalmology (9.9%), ENT (9.5%), Dermatology (9.3%), Urology (3.7%) and Cardiology (2.1%) (Figure 13 & Table 60).

**Figure 13: Total ICATS attendances in Northern Ireland, by specialty (2010/11)**

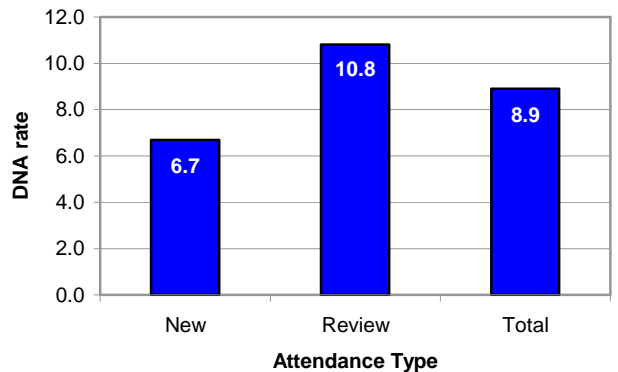


Source: QIAR

#### Missed ICATS Appointments / Did Not Attend (DNA)

Patients missed a total of 8,359 ICATS appointments during 2010/11. This equated to a DNA rate of 8.9. There were 2,885 new appointments missed, compared to 5,474 review appointments. This meant that the DNA rate was higher for review appointments (10.8) than for new appointments (6.7) (Figure 14 & Tables 59 & 60).

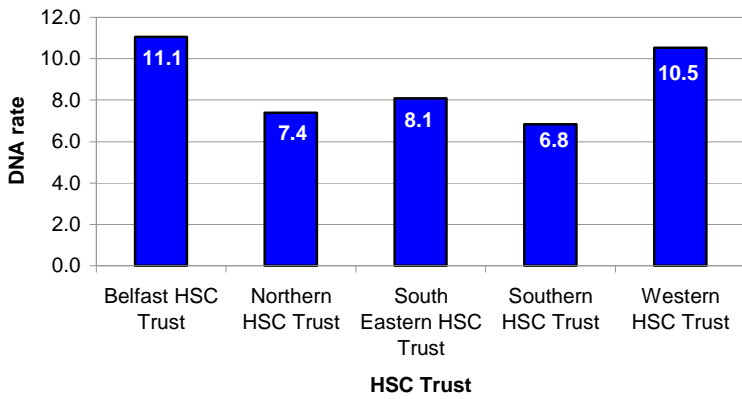
**Figure 14: New, Review & Total DNA rates at ICATS in Northern Ireland (2010/11)**



Source: QIAR

During 2010/11, the Belfast HSC Trust had the highest DNA rate at 11.1, followed by the Western HSC Trust (10.5), South Eastern HSC Trust (8.1), Northern HSC Trust (7.4) and Southern HSC Trust (6.8) (Figure 15 & Table 59).

**Figure 15: ICATS DNA rates in Northern Ireland, by HSC Trust (2010/11)**



Source: QIAR

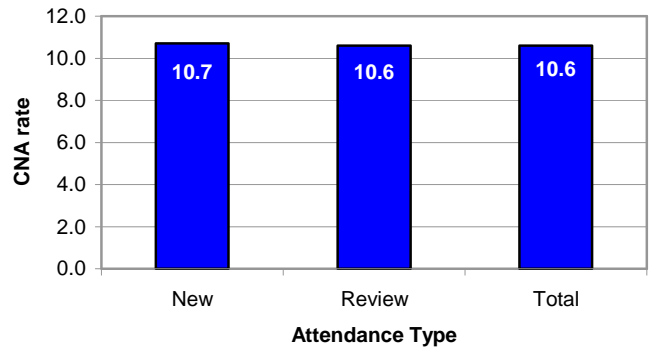
The specialty with the highest DNA rate during 2010/11 was Dermatology (12.7), followed by Cardiology (9.6), T & O Surgery (9.2), ENT (7.7), Urology (6.5) and Ophthalmology (5.3) (Table 60).

### ICATS Appointment Cancellations

#### Patient Cancellations / Could Not Attends (CNA)

Patients cancelled a total of 10,166 ICATS appointments during 2010/11. This equated to a CNA rate of 10.6. Patients cancelled a total of 4,795 new appointments and 5,371 review appointments resulting in CNA rates of 10.7 and 10.6 respectively (Figure 16 & Tables 59 & 60).

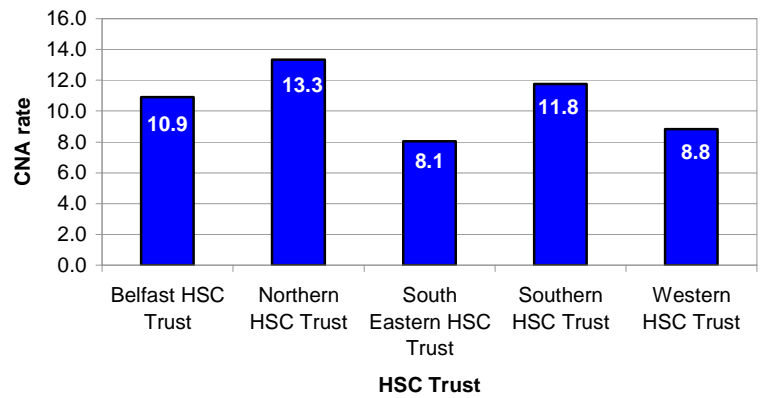
**Figure 16: New, Review & Total CNA rates at ICATS in Northern Ireland (2010/11)**



Source: QIAR

The Northern HSC Trust had the highest CNA rate during 2010/11 (13.3), followed by the Southern HSC Trust (11.8), Belfast HSC Trust (10.9), Western HSC Trust (8.8) and South Eastern HSC Trust (8.1) (Figure 17 & Table 59).

**Figure 17: ICATS CNA rates in Northern Ireland, by HSC Trust (2010/11)**



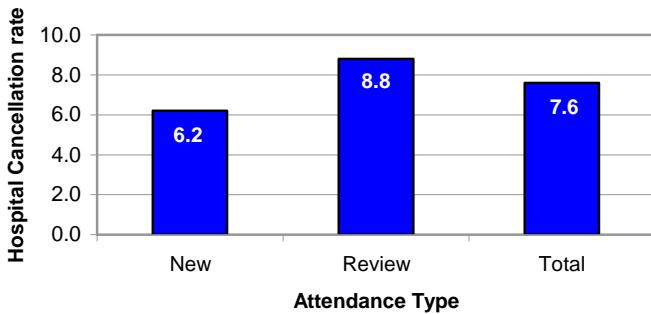
Source: QIAR

The specialty with the highest CNA rate was Dermatology (15.1), followed by ENT (12.5), Ophthalmology (10.3), T & O Surgery (9.9), Urology (9.1) and Cardiology (8.0) (Table 60).

## Hospital Cancellations

Hospitals cancelled a total of 7,029 ICATS appointments during 2010/11. This equated to a Hospital Cancellation rate of 7.6. Hospitals cancelled 2,649 new appointments and 4,380 review appointments, meaning that the Hospital Cancellation rate during 2010/11 was higher for review (8.8) than new attendances (6.2) (Figure 18 & Tables 59 & 60).

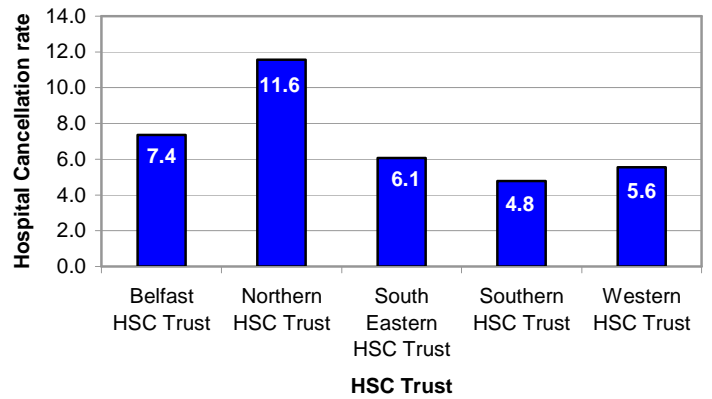
**Figure 18: New, Review & Total hospital cancellation rates at ICATS in Northern Ireland (2010/11)**



Source: QIAR

The highest Hospital Cancellation rate during 2010/11 was recorded at the Northern HSC Trust (11.6), followed by the Belfast HSC Trust (7.4), the South Eastern HSC Trust (6.1), the Western HSC Trust (5.6) and the Southern HSC Trust (4.8) (Figure 19 & Table 59).

**Figure 19: ICATS hospital cancellation rates in Northern Ireland, by HSC Trust (2010/11)**



Source: QIAR

The specialty with the highest Hospital Cancellation rate in 2010/11 was Dermatology (12.7), followed by Ophthalmology (9.0), ENT (8.8), Cardiology (7.8), T & O Surgery (6.6) and Urology (5.2) (Table 60).



**Table 1a: Activity by Hospital/HSC Trust, 2010/11<sup>5</sup>**

Hospital/HSC Trust	Attendances						Hospital Cancellations		Patient	Private
	Seen	New DNA	CNA	Seen	Review DNA	CNA	New	Review	Died	Patient Attendances
Alexandra Gardens	256	162	30	941	372	121	33	376	17	0
Beechcroft	566	71	50	6,355	989	1,216	4	237	0	0
Belfast City	39,288	3,039	6,359	102,037	12,021	18,022	2,509	9,898	535	129
NI Cancer Centre	4,328	228	282	47,967	2,842	3,601	469	6,505	713	247
Mater Infirmorum	20,339	2,291	2,256	49,491	8,942	5,116	1,321	7,270	297	8
Muckamore Abbey	764	213	129	5,255	1,087	875	7	155	12	0
Musgrave Park	18,240	1,596	1,295	40,611	5,553	4,410	761	2,101	18	3
RBHSC	12,857	1,014	1,296	35,077	6,274	5,111	877	9,413	25	1
Royal Maternity	5,826	376	476	20,403	2,071	939	265	1,757	1	0
Royal Victoria	79,454	5,123	8,177	173,825	27,980	26,063	3,822	25,864	846	1,461
Windsor House	234	38	26	468	33	33	13	19	1	0
<b>Belfast HSCT</b>	<b>182,152</b>	<b>14,151</b>	<b>20,376</b>	<b>482,430</b>	<b>68,164</b>	<b>65,507</b>	<b>10,081</b>	<b>63,595</b>	<b>2,465</b>	<b>1,849</b>
Antrim	20,142	1,418	2,959	46,700	4,694	5,635	1,869	6,920	181	308
Carrickfergus	44	4	4	301	39	59	7	117	3	0
Causeway	19,100	1,133	2,132	36,582	4,886	3,907	1,629	9,743	156	253
Mid Ulster	6,818	412	1,579	15,764	2,162	2,501	400	1,820	53	37
Moyle	2,195	137	360	3,698	544	593	190	586	12	10
Waveney	4,997	303	758	11,383	1,286	2,126	462	2,389	28	41
Whiteabbey	6,639	449	1,508	10,953	1,474	2,253	846	2,768	73	66
<b>Northern HSCT</b>	<b>59,935</b>	<b>3,856</b>	<b>9,300</b>	<b>125,381</b>	<b>15,085</b>	<b>17,074</b>	<b>5,403</b>	<b>24,343</b>	<b>506</b>	<b>715</b>
Ards	6,598	480	605	11,772	2,191	1,632	506	4,493	153	0
Bangor	6,270	403	534	7,131	1,290	1,130	350	2,893	75	1
Downe	7,581	613	787	11,916	1,515	1,424	584	1,387	32	0
Lagan Valley	12,647	801	1,147	20,664	2,744	2,493	1,005	1,795	76	0
Ulster	46,958	3,507	3,774	79,899	13,614	9,462	2,608	19,381	450	133
<b>South Eastern HSCT</b>	<b>80,054</b>	<b>5,804</b>	<b>6,847</b>	<b>131,382</b>	<b>21,354</b>	<b>16,141</b>	<b>5,053</b>	<b>29,949</b>	<b>786</b>	<b>134</b>



Table 1a: continued

Hospital/HSC Trust	Attendances						Hospital Cancellations		Patient	Private
	Seen	New DNA	CNA	Seen	Review DNA	CNA	New	Review	Died	Patient Attendances
Armagh Community	3,318	226	338	6,774	893	563	224	647	5	0
Banbridge	1,870	152	258	3,594	330	440	65	260	5	1
Craigavon Area	39,385	2,545	4,537	71,305	7,106	6,382	1,240	5,130	117	22
Bluestone	552	74	51	1,854	378	298	38	1,082	55	0
Daisy Hill	19,437	1,317	2,353	37,790	4,121	4,583	759	3,524	83	309
Kilkeel Primary Care Centre	584	49	121	536	58	60	20	39	1	0
Longstone	121	45	0	1,250	253	1	5	22	0	0
Lurgan	644	99	73	1,495	338	193	25	279	30	0
Mullinure	212	44	21	480	142	77	18	326	15	0
St Luke's	95	53	5	642	271	3	90	245	17	0
South Tyrone	7,672	591	849	14,260	1,243	1,218	359	1,204	35	0
<b>Southern HSCT</b>	<b>73,890</b>	<b>5,195</b>	<b>8,606</b>	<b>139,980</b>	<b>15,133</b>	<b>13,818</b>	<b>2,843</b>	<b>12,758</b>	<b>363</b>	<b>332</b>
Altnagelvin Area	50,429	4,722	6,428	99,432	10,514	13,053	4,346	14,789	294	146
Erne	14,483	1,070	1,529	26,056	2,441	3,267	1,080	4,960	61	648
Gransha	154	68	66	531	57	93	0	0	0	0
Lakeview	59	10	5	1,257	65	79	0	0	0	0
Roe Valley	3,151	337	478	3,737	482	567	407	594	13	0
Tyrone County	9,486	718	1,017	18,632	2,514	2,009	396	3,000	56	44
<b>Western HSCT</b>	<b>77,762</b>	<b>6,925</b>	<b>9,523</b>	<b>149,645</b>	<b>16,073</b>	<b>19,068</b>	<b>6,229</b>	<b>23,343</b>	<b>424</b>	<b>838</b>
<b>NI Total</b>	<b>473,793</b>	<b>35,931</b>	<b>54,652</b>	<b>1,028,818</b>	<b>135,809</b>	<b>131,608</b>	<b>29,609</b>	<b>153,988</b>	<b>4,544</b>	<b>3,868</b>

Source: QOAR (Part 1)

Note: DNA = Did not attend, CNA = Could not attend

<sup>5</sup> Refer to Explanatory Notes 1-3 and 7-8

**Table 1b: Reason for Appointment Cancellation by HSC Trust, 2010/11<sup>5</sup>**

HSC Trust	Consultant unavailable	Medical staff / nurse not available	Patient treated elsewhere	Reason for cancellation			Appointment put back	Cancelled following validation / audit	Administrative error by hospital / GP
				Consultant cancelled appointment	Appointment brought forward				
Belfast HSCT	17,173	1,051	798	184	1,792	11,152	400	656	
Northern HSCT	6,224	29	958	16,654	0	2,844	28	1,766	
South Eastern HSCT	12,045	2,025	1,700	964	3,299	5,049	109	2,697	
Southern HSCT	4,974	653	835	371	2,096	3,511	3	1,642	
Western HSCT	7,690	1,720	2,069	9,430	1,613	3,124	3	1,682	
<b>NI Total</b>	<b>48,106</b>	<b>5,478</b>	<b>6,360</b>	<b>27,603</b>	<b>8,800</b>	<b>25,680</b>	<b>543</b>	<b>8,443</b>	

HSC Trust	Hospital transport not available	Cancelled by hospital in order to rebook as alternative booking method	Patient cancelled appointment as no longer needed	Reason for cancellation			Reason not recorded	Reason incorrectly recorded	Total appointments cancelled by either patient or hospital
				Patient cancelled appointment but it is still required	GP cancelled appointment on patient's behalf				
Belfast HSCT	84	1,282	2,499	49,975	15	64,758	7,740	159,559	
Northern HSCT	53	0	7,060	18,211	0	6	2,287	56,120	
South Eastern HSCT	222	5,849	2,023	18,828	15	1,023	2,142	57,990	
Southern HSCT	27	0	1,885	16,981	17	301	4,729	38,025	
Western HSCT	31	17	2,125	23,968	16	3,177	1,498	58,163	
<b>NI Total</b>	<b>417</b>	<b>7,148</b>	<b>15,592</b>	<b>127,963</b>	<b>63</b>	<b>69,265</b>	<b>18,396</b>	<b>369,857</b>	

Source: QOAR (Part 2)

<sup>5</sup> Refer to Explanatory Notes 1-3 and 7-8

**Table 2a: Activity by Specialty, 2010/11<sup>5</sup>**

Specialty	Spec Code	Attendances						Hospital Cancellations		Patient Died	Private Patient Attendances
		New			Review			New	Review		
		Seen	DNA	CNA	Seen	DNA	CNA				
General Surgery	100	68,742	4,473	9,404	73,002	9,091	9,889	4,145	12,814	446	460
Urology	101	11,187	902	1,523	19,078	2,552	2,823	1,018	4,962	147	67
T & O Surgery	110	47,522	4,708	3,605	116,095	17,333	11,729	2,133	7,613	128	6
ENT	120	43,446	3,293	5,226	51,485	7,540	8,589	2,345	6,680	95	505
Ophthalmology	130	29,748	2,179	3,751	76,977	8,223	11,276	2,011	11,198	358	94
Oral Surgery	140	10,629	841	1,250	13,497	2,501	1,989	768	1,841	44	165
Restorative Dentistry	141	3,056	246	420	8,046	1,293	1,364	170	1,392	21	2
Paediatric Dentistry	142	538	87	25	2,562	1,058	228	18	195	2	0
Orthodontics	143	1,605	108	210	13,203	1,413	1,977	47	1,375	0	1
Neurosurgery	150	1,400	69	169	2,973	434	503	176	2,017	31	0
Plastic Surgery	160	5,615	255	459	11,727	2,240	2,107	430	1,561	45	0
Cardiac Surgery	170	1,061	24	82	1,394	113	105	84	130	6	4
Paediatric Surgery	171	2,695	207	299	2,992	596	531	278	1,083	3	0
Thoracic Surgery	172	722	55	78	1,876	235	296	105	383	11	1
Accident & Emergency	180	166	12	6	7,895	2,204	810	6	187	1	4
Anaesthetics	190	286	1	1	1,415	23	32	0	20	1	0
Pain Management	191	5,577	552	862	8,722	776	949	441	895	11	17
General Medicine	300	22,844	2,089	3,057	74,524	12,029	11,838	1,960	13,427	525	29
Gastroenterology	301	7,900	700	1,579	13,017	2,272	2,405	635	3,702	100	0
Endocrinology	302	2,793	254	420	18,915	3,968	3,435	117	2,434	133	5
Haematology (Clinical)	303	3,673	400	428	46,826	4,360	3,633	316	4,216	194	4
Audiological Medicine	310	70	20	5	1	1	0	1	0	0	0
Clinical Genetics	311	2,328	215	229	607	101	74	140	94	4	0
Rehabilitation	314	959	61	65	6,766	737	1,199	6	698	5	0
Palliative Medicine	315	616	25	64	6,409	155	274	56	207	30	0
Cardiology	320	18,351	1,087	1,763	33,171	4,622	4,450	1,041	11,017	315	83
Dermatology	330	29,846	2,204	3,740	46,085	5,457	6,827	1,574	4,764	114	760
Thoracic Medicine	340	5,235	386	617	15,329	2,138	2,362	332	2,370	192	31
Genito-Urinary Medicine	360	17,785	611	--	8,223	576	--	--	--	0	0

**Table 2a: continued**

Specialty	Spec Code	Attendances						Hospital Cancellations		Patient Died	Private Patient Attendances
		New			Review			New	Review		
		Seen	DNA	CNA	Seen	DNA	CNA				
Nephrology	361	2,263	205	360	18,171	1,925	2,317	342	3,840	122	2
Medical Oncology	370	945	47	43	13,702	951	830	87	1,374	153	7
Neurology	400	10,537	860	1,358	21,275	3,012	3,446	724	3,860	98	0
Clinical Neuro-Physiology	401	1,791	131	229	10	1	0	174	1	1	1
Rheumatology	410	8,646	560	1,144	26,061	2,322	3,810	885	5,499	69	5
Paediatrics	420	15,245	1,566	1,594	45,189	9,300	6,173	1,132	9,688	14	39
Paediatric Neurology	421	277	18	24	1,387	159	264	28	393	5	0
Geriatric Medicine	430	7,315	745	1,029	14,293	2,547	2,561	545	3,106	279	34
Dental Medicine Specialties	450	1,016	73	153	2,476	653	670	93	1,344	5	2
Gynaecology	502	45,511	3,226	6,198	54,010	6,829	8,916	2,289	6,355	31	1,278
Obstetrics (Ante Natal)	510	25,154	1,033	2,208	75,333	4,398	3,820	1,804	8,331	3	20
Obstetrics (Post Natal)	520	40	15	11	325	77	66	7	81	0	0
Learning Disability	700	448	114	59	5,667	747	586	12	177	12	0
Mental Illness	710	829	502	120	5,040	2,223	346	264	2,691	19	0
Child & Adolescent Psychiatry	711	566	71	50	6,355	989	1,216	4	237	0	0
Psychotherapy	713	4	0	1	47	4	7	0	13	0	0
Old Age Psychiatry	715	1,662	349	301	6,240	1,550	1,041	402	3,610	193	0
Clinical Oncology	800	3,321	174	223	37,014	2,227	2,727	355	5,050	552	240
Chemical Pathology	822	685	98	122	2,365	502	665	48	526	16	2
Haematology	823	128	15	10	6,262	969	186	4	250	9	0
Joint Consultant Clinic	990	1,015	65	78	4,784	383	267	57	287	1	0
<b>Total</b>		<b>473,793</b>	<b>35,931</b>	<b>54,652</b>	<b>1,028,818</b>	<b>135,809</b>	<b>131,608</b>	<b>29,609</b>	<b>153,988</b>	<b>4,544</b>	<b>3,868</b>

Source: QOAR (Part 1)

Note: DNA = Did not attend, CNA = Could not attend

<sup>5</sup> Refer to Explanatory Notes 1-3 and 7-8

**Table 2b: Reason for Appointment Cancellation by Specialty, 2010/11<sup>5</sup>**

<b>Specialty</b>	<b>Consultant unavailable</b>	<b>Medical staff / nurse not available</b>	<b>Patient treated elsewhere</b>	<b>Consultant cancelled appointment</b>	<b>Appointment brought forward</b>	<b>Appointment put back</b>	<b>Cancelled following validation / audit</b>	<b>Administrative error by hospital / GP</b>
General Surgery	4,953	663	261	4,202	708	1,906	41	847
Urology	1,627	151	82	960	233	1,749	38	289
T & O Surgery	1,753	142	123	1,615	667	1,302	23	662
ENT	2,980	696	50	1,694	316	632	45	1,004
Ophthalmology	4,124	245	110	1,182	245	1,823	56	562
Oral Surgery	704	84	35	608	181	242	38	231
Restorative Dentistry	205	0	5	0	3	22	37	0
Paediatric Dentistry	58	0	0	2	9	12	0	1
Orthodontics	191	46	250	427	66	145	9	105
Neurosurgery	388	0	8	0	0	90	6	0
Plastic Surgery	892	30	51	22	182	213	23	434
Cardiac Surgery	55	0	0	0	0	15	0	0
Paediatric Surgery	893	0	6	14	25	77	14	14
Thoracic Surgery	49	4	5	1	2	33	0	5
Accident & Emergency	5	0	17	2	54	49	0	30
Anaesthetics	0	0	1	9	0	0	0	8
Pain Management	446	24	15	277	43	180	7	76
General Medicine	4,102	633	701	3,380	1,107	1,639	15	718
Gastroenterology	944	1	49	888	22	526	2	69
Endocrinology	933	22	19	126	20	166	0	25
Haematology (Clinical)	658	53	341	533	376	980	11	278
Audiological Medicine	0	0	0	0	0	0	0	0
Clinical Genetics	12	4	1	0	0	167	1	0
Rehabilitation	133	150	8	20	16	36	0	19
Palliative Medicine	47	0	28	17	20	91	0	4
Cardiology	3,305	277	436	1,205	360	1,134	28	212
Dermatology	2,124	314	53	728	389	1,243	40	353
Thoracic Medicine	556	145	106	261	182	963	0	83

**Table 2b: continued**

<b>Specialty</b>	<b>Hospital transport not available</b>	<b>Cancelled by hospital in order to rebook as alternative booking method</b>	<b>Patient cancelled appointment as no longer needed</b>	<b>Patient cancelled appointment but it is still required</b>	<b>GP cancelled appointment on patient's behalf</b>	<b>Reason not recorded</b>	<b>Reason incorrectly recorded</b>	<b>Total appointments cancelled by either patient or hospital</b>
General Surgery	41	739	2,103	14,552	6	3,782	1,448	36,252
Urology	12	414	429	3,386	0	550	406	10,326
T & O Surgery	131	106	1,242	6,680	6	9,491	1,137	25,080
ENT	4	324	1,035	10,765	2	2,522	771	22,840
Ophthalmology	21	854	591	10,042	1	7,481	899	28,236
Oral Surgery	5	0	305	2,455	3	820	137	5,848
Restorative Dentistry	0	0	1	348	0	2,679	46	3,346
Paediatric Dentistry	0	0	3	97	0	278	6	466
Orthodontics	0	6	118	1,625	0	505	116	3,609
Neurosurgery	0	351	0	324	0	1,640	58	2,865
Plastic Surgery	15	1	209	2,054	0	314	117	4,557
Cardiac Surgery	0	0	0	87	0	222	22	401
Paediatric Surgery	0	0	30	469	0	568	81	2,191
Thoracic Surgery	0	34	5	176	0	516	32	862
Accident & Emergency	0	0	136	290	0	331	95	1,009
Anaesthetics	1	0	5	24	0	4	1	53
Pain Management	3	0	163	1,335	2	463	113	3,147
General Medicine	33	1,368	1,689	11,141	11	2,641	1,104	30,282
Gastroenterology	13	153	459	2,840	0	2,064	291	8,321
Endocrinology	0	0	47	3,051	7	1,568	422	6,406
Haematology (Clinical)	8	214	316	2,910	1	1,064	850	8,593
Audiological Medicine	0	0	0	2	0	3	1	6
Clinical Genetics	0	0	11	282	0	25	34	537
Rehabilitation	20	1	26	745	0	555	239	1,968
Palliative Medicine	0	0	24	240	1	64	65	601
Cardiology	13	669	436	4,433	2	5,248	513	18,271
Dermatology	18	166	1,091	7,861	2	1,790	733	16,905
Thoracic Medicine	8	196	117	2,468	1	267	328	5,681

**Table 2b: continued**

<b>Specialty</b>	<b>Consultant unavailable</b>	<b>Medical staff / nurse not available</b>	<b>Patient treated elsewhere</b>	<b>Consultant cancelled appointment</b>	<b>Appointment brought forward</b>	<b>Appointment put back</b>	<b>Cancelled following validation / audit</b>	<b>Administrative error by hospital / GP</b>
Nephrology	753	60	328	589	267	1,536	19	195
Medical Oncology	97	33	39	0	266	722	3	47
Neurology	1,695	109	50	349	153	419	0	77
Clinical Neuro-Physiology	32	0	0	0	0	6	0	0
Rheumatology	1,126	195	43	1,366	148	641	1	184
Paediatrics	4,744	88	469	2,493	330	782	33	412
Paediatric Neurology	145	0	2	31	1	10	2	1
Geriatric Medicine	1,083	205	363	251	417	839	1	119
Dental Medicine Specialties	167	0	0	0	0	1	39	0
Gynaecology	2,629	308	166	1,696	465	1,243	11	406
Obstetrics (Ante Natal)	866	120	1,753	2,229	330	573	0	354
Obstetrics (Post Natal)	46	2	0	28	1	4	0	6
Learning Disability	55	40	13	38	4	17	0	6
Mental Illness	642	0	0	0	0	92	0	0
Child & Adolescent Psychiatry	0	0	0	0	0	0	0	0
Psychotherapy	0	0	0	0	0	0	0	0
Old Age Psychiatry	1,137	466	91	9	382	794	0	370
Clinical Oncology	464	168	242	0	802	2,561	0	220
Chemical Pathology	240	0	19	277	8	4	0	9
Haematology	36	0	4	52	0	0	0	3
Joint Consultant Clinics	12	0	17	22	0	1	0	5
<b>Total</b>	<b>48,106</b>	<b>5,478</b>	<b>6,360</b>	<b>27,603</b>	<b>8,800</b>	<b>25,680</b>	<b>543</b>	<b>8,443</b>

**Table 2b: continued**

<b>Specialty</b>	<b>Hospital transport not available</b>	<b>Cancelled by hospital in order to rebook as alternative booking method</b>	<b>Patient cancelled appointment as no longer needed</b>	<b>Patient cancelled appointment but it is still required</b>	<b>GP cancelled appointment on patient's behalf</b>	<b>Reason not recorded</b>	<b>Reason incorrectly recorded</b>	<b>Total appointments cancelled by either patient or hospital</b>
Nephrology	11	0	75	2,096	1	506	423	6,859
Medical Oncology	2	0	18	733	0	98	276	2,334
Neurology	6	548	229	3,702	1	1,673	377	9,388
Clinical Neuro-Physiology	0	0	0	98	0	260	8	404
Rheumatology	8	841	335	4,043	0	2,050	357	11,338
Paediatrics	0	1	815	4,982	1	3,019	418	18,587
Paediatric Neurology	0	0	4	152	0	342	19	709
Geriatric Medicine	28	0	420	2,569	3	346	597	7,241
Dental Medicine Specialties	0	0	0	294	0	1,716	43	2,260
Gynaecology	6	162	1,576	10,591	5	3,546	948	23,758
Obstetrics (Ante Natal)	0	0	1,254	2,962	7	2,083	3,632	16,163
Obstetrics (Post Natal)	0	0	7	45	0	0	26	165
Learning Disability	0	0	23	557	0	76	5	834
Mental Illness	0	0	4	25	0	2,647	11	3,421
Child & Adolescent Psychiatry	0	0	0	0	0	1,507	0	1,507
Psychotherapy	0	0	0	7	0	13	1	21
Old Age Psychiatry	5	0	78	934	0	936	152	5,354
Clinical Oncology	2	0	75	2,576	0	353	892	8,355
Chemical Pathology	3	0	47	657	0	57	40	1,361
Haematology	0	0	18	93	0	236	8	450
Joint Consultant Clinics	0	0	23	165	0	346	98	689
<b>Total</b>	<b>417</b>	<b>7,148</b>	<b>15,592</b>	<b>127,963</b>	<b>63</b>	<b>69,265</b>	<b>18,396</b>	<b>369,857</b>

Source: QOAR (Part 2)

<sup>5</sup> Refer to Explanatory Notes 1-3 and 7-8



**Table 3: Acute Services (POC 1) - Activity by Hospital/HSC Trust, 2010/11<sup>5</sup>**

Hospital/HSC Trust	Attendances						Hospital Cancellations		Patient	Private
	Seen	New DNA	CNA	Seen	Review DNA	CNA	New	Review	Died	Patient Attendances
Belfast City	37,280	2,882	5,920	99,023	11,585	17,217	2,414	9,603	478	129
NI Cancer Centre	4,328	228	282	47,967	2,842	3,601	469	6,505	713	247
Mater Infirmorum	18,264	1,824	2,063	39,431	5,939	4,569	970	3,687	228	8
Muckamore Abbey	496	154	75	2,095	658	369	0	0	0	0
Musgrave Park	18,166	1,588	1,281	39,516	5,223	4,219	760	2,096	13	3
RBHSC	12,857	1,014	1,296	35,077	6,274	5,111	877	9,413	25	1
Royal Maternity	879	61	54	4,852	652	221	49	423	1	0
Royal Victoria	79,263	5,101	8,141	172,968	27,806	25,969	3,811	25,632	823	1,461
<b>Belfast HSCT</b>	<b>171,533</b>	<b>12,852</b>	<b>19,112</b>	<b>440,929</b>	<b>60,979</b>	<b>61,276</b>	<b>9,350</b>	<b>57,359</b>	<b>2,281</b>	<b>1,849</b>
Antrim	18,660	1,375	2,822	43,797	4,581	5,462	1,730	6,561	181	307
Carrickfergus	44	4	4	301	39	59	7	117	3	0
Causeway	17,561	1,085	1,981	28,873	4,654	3,721	1,297	8,938	156	251
Mid Ulster	6,037	390	1,482	12,907	1,999	2,332	356	1,311	53	36
Moyle	1,843	112	303	2,776	493	558	138	428	12	9
Waveney	4,092	260	618	9,137	1,159	1,939	333	2,052	27	41
Whiteabbey	6,266	425	1,456	9,909	1,318	2,036	789	2,510	52	57
<b>Northern HSCT</b>	<b>54,503</b>	<b>3,651</b>	<b>8,666</b>	<b>107,700</b>	<b>14,243</b>	<b>16,107</b>	<b>4,650</b>	<b>21,917</b>	<b>484</b>	<b>701</b>
Ards	6,113	376	462	9,987	1,944	1,185	339	3,346	100	0
Bangor	6,270	403	534	7,131	1,290	1,130	350	2,893	75	1
Downe	7,549	613	786	11,180	1,463	1,396	582	1,332	32	0
Lagan Valley	10,799	726	938	17,813	2,521	2,293	841	1,499	61	0
Ulster	41,510	3,172	3,371	69,838	13,144	8,719	2,240	17,502	401	100
<b>South Eastern HSCT</b>	<b>72,241</b>	<b>5,290</b>	<b>6,091</b>	<b>115,949</b>	<b>20,362</b>	<b>14,723</b>	<b>4,352</b>	<b>26,572</b>	<b>669</b>	<b>101</b>

**Table 3: continued**

Hospital/HSC Trust	Attendances						Hospital Cancellations		Patient	Private
	Seen	New DNA	CNA	Seen	Review DNA	CNA	New	Review	Died	Patient Attendances
Armagh Community	2,893	209	275	5,533	769	494	154	351	5	0
Banbridge	1,836	152	242	3,523	317	430	51	222	5	1
Bluestone	277	33	13	1	0	0	0	0	0	0
Craigavon Area	36,700	2,472	4,376	63,674	6,833	5,784	1,186	4,624	112	22
Daisy Hill	18,126	1,274	2,168	31,919	3,984	3,991	714	2,933	83	309
Kilkeel Primary Care Centre	570	49	121	512	57	58	18	35	1	0
Lurgan	1	0	0	72	5	7	0	0	0	0
South Tyrone	6,446	484	703	11,386	1,025	1,020	279	658	30	0
<b>Southern HSCT</b>	<b>66,849</b>	<b>4,673</b>	<b>7,898</b>	<b>116,620</b>	<b>12,990</b>	<b>11,784</b>	<b>2,402</b>	<b>8,823</b>	<b>236</b>	<b>332</b>
Altnagelvin Area	47,671	4,584	6,202	92,189	9,937	12,576	4,192	13,745	267	143
Roe Valley	2,780	316	462	2,838	354	514	396	543	10	0
Gransha	154	68	66	531	57	93	0	0	0	0
Erne	13,207	987	1,405	21,578	2,128	2,964	868	3,923	47	644
Tyrone County	8,837	681	971	17,184	2,224	1,928	361	2,860	44	44
<b>Western HSCT</b>	<b>72,649</b>	<b>6,636</b>	<b>9,106</b>	<b>134,320</b>	<b>14,700</b>	<b>18,075</b>	<b>5,817</b>	<b>21,071</b>	<b>368</b>	<b>831</b>
<b>NI Total</b>	<b>437,775</b>	<b>33,102</b>	<b>50,873</b>	<b>915,518</b>	<b>123,274</b>	<b>121,965</b>	<b>26,571</b>	<b>135,742</b>	<b>4,038</b>	<b>3,814</b>

Source: QOAR (Part 1)

Note: DNA = Did not attend, CNA = Could not attend

<sup>5</sup> Refer to Explanatory Notes 1-3 and 7-8

**Table 4: Maternity and Child Health (POC 2) - Activity by Hospital/HSC Trust, 2010/11<sup>6</sup>**

Hospital/HSC Trust	Attendances						Hospital Cancellations		Patient	Private
	Seen	New DNA	CNA	Seen	Review DNA	CNA	New	Review	Died	Patient Attendances
Mater Infirmorum	925	14	13	4,422	527	55	26	138	0	0
Royal Maternity	4,947	315	422	15,551	1,419	718	216	1,334	0	0
<b>Belfast HSCT</b>	<b>5,872</b>	<b>329</b>	<b>435</b>	<b>19,973</b>	<b>1,946</b>	<b>773</b>	<b>242</b>	<b>1,472</b>	<b>0</b>	<b>0</b>
Antrim	1,410	42	130	2,827	99	161	126	353	0	1
Causeway	1,539	48	151	7,709	232	186	332	805	0	2
Mid Ulster	781	22	97	2,857	163	169	44	509	0	1
Moyle	352	25	57	922	51	35	52	158	0	1
Waveney	803	35	124	2,057	109	125	119	308	0	0
Whiteabbey	186	13	28	445	36	25	43	61	0	5
<b>Northern HSCT</b>	<b>5,071</b>	<b>185</b>	<b>587</b>	<b>16,817</b>	<b>690</b>	<b>701</b>	<b>716</b>	<b>2,194</b>	<b>0</b>	<b>10</b>
Downe	32	0	1	736	52	28	2	55	0	0
Lagan Valley	1,412	42	156	1,995	150	85	142	150	0	0
Ulster	3,536	186	221	8,013	284	447	135	1,259	0	3
<b>South Eastern HSCT</b>	<b>4,980</b>	<b>228</b>	<b>378</b>	<b>10,744</b>	<b>486</b>	<b>560</b>	<b>279</b>	<b>1,464</b>	<b>0</b>	<b>3</b>
Armagh Community	425	17	63	1,241	124	69	70	296	0	0
Banbridge	34	0	16	71	13	10	14	38	0	0
Craigavon Area	2,179	45	131	6,926	161	475	43	441	0	0
Daisy Hill	1,303	43	185	5,871	137	592	45	591	0	0
Kilkeel Primary Care Centre	14	0	0	24	1	2	2	4	0	0
South Tyrone	1,013	42	131	2,412	77	179	72	264	0	0
<b>Southern HSCT</b>	<b>4,968</b>	<b>147</b>	<b>526</b>	<b>16,545</b>	<b>513</b>	<b>1,327</b>	<b>246</b>	<b>1,634</b>	<b>0</b>	<b>0</b>

**Table 4: continued**

Hospital/HSC Trust	Attendances						Hospital Cancellations		Patient	Private
	Seen	New DNA	CNA	Seen	Review DNA	CNA	New	Review	Died	Patient Attendances
Altnagelvin Area	2,514	83	202	6,315	338	378	133	743	3	3
Erne	961	33	55	3,447	164	94	162	790	0	4
Roe Valley	353	17	12	719	94	28	9	26	0	0
Tyrone County	475	26	24	1,098	244	25	24	89	0	0
<b>Western HSCT</b>	<b>4,303</b>	<b>159</b>	<b>293</b>	<b>11,579</b>	<b>840</b>	<b>525</b>	<b>328</b>	<b>1,648</b>	<b>3</b>	<b>7</b>
<b>NI Total</b>	<b>25,194</b>	<b>1,048</b>	<b>2,219</b>	<b>75,658</b>	<b>4,475</b>	<b>3,886</b>	<b>1,811</b>	<b>8,412</b>	<b>3</b>	<b>20</b>

Source: QOAR (Part 1)

Note: DNA = Did not attend, CNA = Could not attend

<sup>6</sup> Refer to Explanatory Notes 1 and 7-8

**Table 5: Elderly Care (POC 4) - Activity by Hospital/HSC Trust, 2010/11<sup>6</sup>**

Hospital/HSC Trust	Attendances						Hospital Cancellations		Patient	Private
	Seen	New DNA	CNA	Seen	Review DNA	CNA	New	Review	Died	Patient Attendances
Alexandra Gardens	180	38	29	487	219	106	27	251	15	0
Belfast City	2,008	157	439	3,014	436	805	95	295	57	0
Mater Infirmorum	397	75	61	1,052	406	161	67	879	52	0
Musgrave Park	74	8	14	1,095	330	191	1	5	5	0
Royal Victoria	191	22	36	857	174	94	11	232	23	0
Windsor House	230	38	25	421	29	26	13	6	1	0
<b>Belfast HSCT</b>	<b>3,080</b>	<b>338</b>	<b>604</b>	<b>6,926</b>	<b>1,594</b>	<b>1,383</b>	<b>214</b>	<b>1,668</b>	<b>153</b>	<b>0</b>
Antrim	72	1	7	76	14	12	13	6	0	0
Waveney	102	8	16	189	18	62	10	29	1	0
Whiteabbey	187	11	24	599	120	192	14	197	21	4
<b>Northern HSCT</b>	<b>361</b>	<b>20</b>	<b>47</b>	<b>864</b>	<b>152</b>	<b>266</b>	<b>37</b>	<b>232</b>	<b>22</b>	<b>4</b>
Ards	485	104	143	1,785	247	447	167	1,147	53	0
Lagan Valley	436	33	53	856	73	115	22	146	15	0
Ulster	1,912	149	182	2,048	186	296	233	620	49	30
<b>South Eastern HSCT</b>	<b>2,833</b>	<b>286</b>	<b>378</b>	<b>4,689</b>	<b>506</b>	<b>858</b>	<b>422</b>	<b>1,913</b>	<b>117</b>	<b>30</b>

**Table 5: continued**

Hospital/HSC Trust	Attendances						Hospital Cancellations		Patient Died	Private Patient Attendances
	Seen	New DNA	CNA	Seen	Review DNA	CNA	New	Review		
Bluestone	275	41	38	1,853	378	298	38	1,082	55	0
Craigavon Area	506	28	30	705	112	123	11	65	5	0
Daisy Hill	8	0	0	0	0	0	0	0	0	0
Lurgan	643	99	73	1,423	333	186	25	279	30	0
Mullinure	212	44	21	480	142	77	18	326	15	0
St Luke's	95	53	5	642	271	3	90	245	17	0
South Tyrone	213	65	15	462	141	19	8	282	5	0
<b>Southern HSCT</b>	<b>1,952</b>	<b>330</b>	<b>182</b>	<b>5,565</b>	<b>1,377</b>	<b>706</b>	<b>190</b>	<b>2,279</b>	<b>127</b>	<b>0</b>
Altnagelvin	244	55	24	928	239	99	21	301	24	0
Erne	315	50	69	1,031	149	209	50	247	14	0
Roe Valley (Outpatients)	18	4	4	180	34	25	2	25	3	0
Tyrone County	174	11	22	350	46	56	11	51	12	0
<b>Western HSCT</b>	<b>751</b>	<b>120</b>	<b>119</b>	<b>2,489</b>	<b>468</b>	<b>389</b>	<b>84</b>	<b>624</b>	<b>53</b>	<b>0</b>
<b>NI Total</b>	<b>8,977</b>	<b>1,094</b>	<b>1,330</b>	<b>20,533</b>	<b>4,097</b>	<b>3,602</b>	<b>947</b>	<b>6,716</b>	<b>472</b>	<b>34</b>

Source: QOAR (Part 1)

Note: DNA = Did not attend, CNA = Could not attend

<sup>6</sup> Refer to Explanatory Notes 1 and 7-8

**Table 6: Mental Health (POC 5) - Activity by Hospital/HSC Trust, 2010/11<sup>7</sup>**

Hospital/HSC Trust	Attendances						Hospital Cancellations	Patient Died	Private Patient Attendances	
	Seen	New DNA	CNA	Seen	Review DNA	CNA				
Alexandra Gardens	76	124	1	454	153	15	6	125	2	0
Beechcroft	566	71	50	6,355	989	1,216	4	237	0	0
Mater Infirmorum	753	378	119	4,586	2,070	331	258	2,566	17	0
Windsor House	4	0	1	47	4	7	0	13	0	0
<b>Belfast HSCT</b>	<b>1,399</b>	<b>573</b>	<b>171</b>	<b>11,442</b>	<b>3,216</b>	<b>1,569</b>	<b>268</b>	<b>2,941</b>	<b>19</b>	<b>0</b>
<b>NI Total</b>	<b>1,399</b>	<b>573</b>	<b>171</b>	<b>11,442</b>	<b>3,216</b>	<b>1,569</b>	<b>268</b>	<b>2,941</b>	<b>19</b>	<b>0</b>

Source: QOAR (Part 1)

Note: DNA = Did not attend, CNA = Could not attend

<sup>7</sup> Refer to Explanatory Notes 1, 4 and 7-8

**Table 7: Learning Disability (POC 6) - Activity by Hospital/HSC Trust, 2010/11<sup>6</sup>**

Hospital/HSC Trust	Attendances						Hospital Cancellations		Patient	Private
	Seen	New DNA	CNA	Seen	Review DNA	CNA	New	Review	Died	Patient Attendances
Muckamore Abbey	268	59	54	3,160	429	506	7	155	12	0
<b>Belfast HSCT</b>	<b>268</b>	<b>59</b>	<b>54</b>	<b>3,160</b>	<b>429</b>	<b>506</b>	<b>7</b>	<b>155</b>	<b>12</b>	<b>0</b>
Longstone	121	45	0	1,250	253	1	5	22	0	0
<b>Southern HSCT</b>	<b>121</b>	<b>45</b>	<b>0</b>	<b>1,250</b>	<b>253</b>	<b>1</b>	<b>5</b>	<b>22</b>	<b>0</b>	<b>0</b>
Lakeview	59	10	5	1,257	65	79	0	0	0	0
<b>Western HSCT</b>	<b>59</b>	<b>10</b>	<b>5</b>	<b>1,257</b>	<b>65</b>	<b>79</b>	<b>0</b>	<b>0</b>	<b>0</b>	<b>0</b>
<b>NI Total</b>	<b>448</b>	<b>114</b>	<b>59</b>	<b>5,667</b>	<b>747</b>	<b>586</b>	<b>12</b>	<b>177</b>	<b>12</b>	<b>0</b>

Source: QOAR (Part 1)

Note: DNA = Did not attend, CNA = Could not attend

<sup>6</sup> Refer to Explanatory Notes 1 and 7-8



**Table 8a: Activity Trends by Programme of Care, 2006/07 to 2010/11<sup>8</sup>**

<b>Programme of Care</b>	<b>Activity Indicator</b>	<b>2006/07</b>	<b>2007/08</b>	<b>2008/09</b>	<b>2009/10</b>	<b>2010/11</b>	<b>% Change 09/10 - 10/11</b>	<b>% Change 06/07 - 10/11</b>
<b>POC 1: Acute Services</b>	<b>Outpatients</b>							
	New Attendances	390,479	410,210	430,820	440,774	437,775	-0.7	12.1
	Review Attendances	882,734	895,595	908,982	905,464	915,518	1.1	3.7
	Total Attendances	1,273,213	1,305,805	1,339,802	1,346,238	1,353,293	0.5	6.3
	Total Did Not Attends (DNAs)	--	--	159,840	156,246	156,376	0.1	--
	Total Could Not Attends (CNAs)	--	--	165,646	166,468	172,838	3.8	--
	Total Hospital Cancellations	--	--	183,829	172,748	162,313	-6.0	--
<b>POC 2: Maternity and Child Health</b>	<b>Outpatients</b>							
	New Attendances	27,720	29,711	29,355	28,761	25,194	-12.4	-9.1
	Review Attendances	84,171	84,075	76,706	76,087	75,658	-0.6	-10.1
	Total Attendances	111,891	113,786	106,061	104,848	100,852	-3.8	-9.9
	Total Did Not Attends (DNAs)	--	--	6,023	5,723	5,523	-3.5	--
	Total Could Not Attends (CNAs)	--	--	6,585	6,622	6,105	-7.8	--
	Total Hospital Cancellations	--	--	11,253	9,899	10,223	3.3	--
<b>POC 4: Elderly Care</b>	<b>Outpatients</b>							
	New Attendances	10,287	10,864	10,079	9,876	8,977	-9.1	-12.7
	Review Attendances	24,918	26,047	21,294	16,794	20,533	22.3	-17.6
	Total Attendances	35,205	36,911	31,373	26,670	29,510	10.6	-16.2
	Total Did Not Attends (DNAs)	--	--	4,628	4,008	5,191	29.5	--
	Total Could Not Attends (CNAs)	--	--	4,243	4,246	4,932	16.2	--
	Total Hospital Cancellations	--	--	9,015	7,295	7,663	5.0	--
<b>POC 5: Mental Health</b>	<b>Outpatients</b>							
	New Attendances	13,312	13,499	5,053	1,534	1,399	-8.8	-89.5
	Review Attendances	84,935	90,214	36,324	18,788	11,442	-39.1	-86.5
	Total Attendances	98,247	103,713	41,377	20,322	12,841	-36.8	-86.9
	Total Did Not Attends (DNAs)	--	--	13,563	6,028	3,789	-37.1	--
	Total Could Not Attends (CNAs)	--	--	5,552	2,121	1,740	-18.0	--
	Total Hospital Cancellations	--	--	12,580	6,321	3,209	-49.2	--

**Table 8a: continued**

<b>Programme of Care</b>	<b>Activity Indicator</b>	<b>2006/07</b>	<b>2007/08</b>	<b>2008/09</b>	<b>2009/10</b>	<b>2010/11</b>	<b>% Change 09/10 - 10/11</b>	<b>% Change 06/07 - 10/11</b>
<b>POC 6: Learning Disability</b>	<b>Outpatients</b>							
	New Attendances	343	398	377	400	448	12.0	30.6
	Review Attendances	4,773	4,510	4,812	5,051	5,667	12.2	18.7
	Total Attendances	5,116	4,908	5,189	5,451	6,115	12.2	19.5
	Total Did Not Attends (DNAs)	--	--	738	872	861	-1.3	--
	Total Could Not Attends (CNAs)	--	--	668	610	645	5.7	--
	Total Hospital Cancellations	--	--	123	141	189	34.0	--
<b>All POCs</b>	<b>Outpatients</b>							
	New Attendances	442,141	464,682	475,684	481,345	473,793	-1.6	7.2
	Review Attendances	1,081,531	1,100,441	1,048,118	1,022,184	1,028,818	0.6	-4.9
	Total Attendances	1,523,672	1,565,123	1,523,802	1,503,529	1,502,611	-0.1	-1.4
	Total Did Not Attends (DNAs)	--	--	184,792	172,877	171,740	-0.7	--
	Total Could Not Attends (CNAs)	--	--	182,694	180,067	186,260	3.4	--
	Total Hospital Cancellations	--	--	216,800	196,404	183,597	-6.5	--

Source: QOAR (Part 1)

Note: DNA = Did not attend, CNA = Could not attend

<sup>8</sup> Refer to Explanatory Notes Points 1-4 and 7-8

**Table 8b: Activity Trends by HSC Trust, 2006/07 to 2010/11<sup>8</sup>**

HSC Trust	Activity Indicator						% Change	% Change
		2006/07	2007/08	2008/09	2009/10	2010/11	09/10 - 10/11	06/07 - 10/11
<b>Belfast HSCT</b>								
	<b>Outpatients</b>							
	New Attendances	171,801	182,585	180,834	186,265	182,152	-2.2	6.0
	Review Attendances	489,051	502,358	473,081	470,248	482,430	2.6	-1.4
	Total Attendances	660,852	684,943	653,915	656,513	664,582	1.2	0.6
	Total Did Not Attend (DNAs)	--	--	87,253	84,565	82,315	-2.7	--
	Total Could Not Attend (CNAs)	--	--	76,564	78,352	85,883	9.6	--
	Total Hospital Cancellations	--	--	75,993	74,479	73,676	-1.1	--
<b>Northern HSCT</b>								
	<b>Outpatients</b>							
	New Attendances	56,704	64,010	66,388	65,095	59,935	-7.9	5.7
	Review Attendances	145,097	145,799	134,116	131,127	125,381	-4.4	-13.6
	Total Attendances	201,801	209,809	200,504	196,222	185,316	-5.6	-8.2
	Total Did Not Attend (DNAs)	--	--	21,846	20,270	18,941	-6.6	--
	Total Could Not Attend (CNAs)	--	--	27,614	28,312	26,374	-6.8	--
	Total Hospital Cancellations	--	--	30,432	30,242	29,746	-1.6	--
<b>South Eastern HSCT</b>								
	<b>Outpatients</b>							
	New Attendances	69,819	75,067	79,159	77,086	80,054	3.9	14.7
	Review Attendances	137,552	138,236	130,927	130,044	131,382	1.0	-4.5
	Total Attendances	207,371	213,303	210,086	207,130	211,436	2.1	2.0
	Total Did Not Attend (DNAs)	--	--	26,830	26,376	27,158	3.0	--
	Total Could Not Attend (CNAs)	--	--	22,857	22,615	22,988	1.6	--
	Total Hospital Cancellations	--	--	35,280	31,681	35,002	10.5	--
<b>Southern HSCT</b>								
	<b>Outpatients</b>							
	New Attendances	68,711	70,228	72,092	71,685	73,890	3.1	7.5
	Review Attendances	155,166	158,020	154,057	139,281	139,980	0.5	-9.8
	Total Attendances	223,877	228,248	226,149	210,966	213,870	1.4	-4.5
	Total Did Not Attend (DNAs)	--	--	24,733	18,273	20,328	11.2	--
	Total Could Not Attend (CNAs)	--	--	27,964	21,203	22,424	5.8	--
	Total Hospital Cancellations	--	--	26,947	17,045	15,601	-8.5	--

**Table 8b: continued**

HSC Trust	Activity Indicator	2006/07	2007/08	2008/09	2009/10	2010/11	% Change 09/10 - 10/11	% Change 06/07 - 10/11
<b>Western HSCT</b>								
	<b>Outpatients</b>							
	New Attendances	75,106	72,792	77,211	81,214	77,762	-4.3	3.5
	Review Attendances	154,665	156,028	155,937	151,484	149,645	-1.2	-3.2
	Total Attendances	229,771	228,820	233,148	232,698	227,407	-2.3	-1.0
	Total Did Not Attends (DNAs)	--	--	24,130	23,393	22,998	-1.7	--
	Total Could Not Attends (CNAs)	--	--	27,695	29,585	28,591	-3.4	--
	Total Hospital Cancellations	--	--	48,148	42,957	29,572	-31.2	--
<b>NI Total</b>								
	<b>Outpatients</b>							
	New Attendances	442,141	464,682	475,684	481,345	473,793	-1.6	7.2
	Review Attendances	1,081,531	1,100,441	1,048,118	1,022,184	1,028,818	0.6	-4.9
	Total Attendances	1,523,672	1,565,123	1,523,802	1,503,529	1,502,611	-0.1	-1.4
	Total Did Not Attends (DNAs)	--	--	184,792	172,877	171,740	-0.7	--
	Total Could Not Attends (CNAs)	--	--	182,694	180,067	186,260	3.4	--
	Total Hospital Cancellations	--	--	216,800	196,404	183,597	-6.5	--

Source: QOAR (Part 1)

Note: DNA = Did not attend, CNA = Could not attend

<sup>8</sup> Refer to Explanatory Notes Points 1-4 and 7-8

**Table 9: Specialty 100 - Activity by Hospital/HSC Trust for General Surgery, 2010/11**

Hospital/HSC Trust	Attendances						Hospital Cancellations	Patient Died	Private Patient Attendances	
	New			Review						
	Seen	DNA	CNA	Seen	DNA	CNA	New	Review		
Belfast City	9,801	599	1,553	12,503	1,346	2,187	573	1,510	77	0
Mater Infirmorum	3,597	328	471	5,022	870	648	161	604	63	1
Royal Victoria	5,487	330	630	12,531	1,910	1,618	136	1,973	108	33
<b>Belfast HSCT</b>	<b>18,885</b>	<b>1,257</b>	<b>2,654</b>	<b>30,056</b>	<b>4,126</b>	<b>4,453</b>	<b>870</b>	<b>4,087</b>	<b>248</b>	<b>34</b>
Antrim	5,668	305	811	4,683	476	761	561	1,411	35	133
Causeway	3,596	190	340	3,554	582	402	208	706	15	0
Mid Ulster	1,902	136	843	1,101	142	211	108	155	5	21
Moyle	533	41	121	340	55	74	60	63	4	8
Waveney	532	46	84	697	107	100	110	615	7	39
Whiteabbey	1,325	78	299	1,478	189	278	329	523	7	19
<b>Northern HSCT</b>	<b>13,556</b>	<b>796</b>	<b>2,498</b>	<b>11,853</b>	<b>1,551</b>	<b>1,826</b>	<b>1,376</b>	<b>3,473</b>	<b>73</b>	<b>220</b>
Ards	614	20	59	542	111	56	23	245	9	0
Bangor	922	73	74	501	106	80	39	137	4	0
Downe	1,184	91	133	638	67	71	51	38	0	0
Lagan Valley	2,061	147	142	477	35	46	139	73	2	0
Ulster	6,140	397	558	5,763	888	644	223	1,962	50	0
<b>South Eastern HSCT</b>	<b>10,921</b>	<b>728</b>	<b>966</b>	<b>7,921</b>	<b>1,207</b>	<b>897</b>	<b>475</b>	<b>2,455</b>	<b>65</b>	<b>0</b>
Armagh Community	667	35	62	347	37	31	48	38	1	0
Banbridge	352	24	34	434	26	63	2	11	0	0
Craigavon Area	8,190	452	1,049	6,385	612	601	233	512	18	1
Daisy Hill	5,029	293	628	6,349	505	598	177	371	7	42
Kilkeel Primary Care Centre	331	20	57	150	15	19	17	6	0	0
South Tyrone	636	58	65	267	17	31	29	15	3	0
<b>Southern HSCT</b>	<b>15,205</b>	<b>882</b>	<b>1,895</b>	<b>13,932</b>	<b>1,212</b>	<b>1,343</b>	<b>506</b>	<b>953</b>	<b>29</b>	<b>43</b>

**Table 9: continued**

Hospital/HSC Trust	Attendances						Hospital Cancellations	Patient Died	Private Patient Attendances	
	New			Review						
	Seen	DNA	CNA	Seen	DNA	CNA	New	Review		
Altnagelvin Area	6,442	570	872	5,667	551	793	653	1,310	19	119
Erne	2,110	136	313	2,088	257	345	144	359	10	44
Roe Valley	252	41	34	212	37	50	64	62	1	0
Tyrone County	1,371	63	172	1,273	150	182	57	115	1	0
<b>Western HSCT</b>	<b>10,175</b>	<b>810</b>	<b>1,391</b>	<b>9,240</b>	<b>995</b>	<b>1,370</b>	<b>918</b>	<b>1,846</b>	<b>31</b>	<b>163</b>
<b>NI Total</b>	<b>68,742</b>	<b>4,473</b>	<b>9,404</b>	<b>73,002</b>	<b>9,091</b>	<b>9,889</b>	<b>4,145</b>	<b>12,814</b>	<b>446</b>	<b>460</b>

Source: QOAR (Part 1)

Note: DNA = Did not attend, CNA = Could not attend

**Table 10: Specialty 101 - Activity by Hospital/HSC Trust for Urology, 2010/11**

Hospital/HSC Trust	Attendances						Hospital Cancellations	Patient Died	Private Patient Attendances	
	New			Review						
	Seen	DNA	CNA	Seen	DNA	CNA	New	Review		
Belfast City	2,852	220	478	5,765	816	1,049	367	1,012	44	0
Mater Infirmorum	859	68	126	1,379	251	206	15	89	13	4
Royal Victoria	410	35	67	346	97	86	20	134	2	0
<b>Belfast HSCT</b>	<b>4,121</b>	<b>323</b>	<b>671</b>	<b>7,490</b>	<b>1,164</b>	<b>1,341</b>	<b>402</b>	<b>1,235</b>	<b>59</b>	<b>4</b>
Causeway	1,616	92	240	2,699	347	443	278	1,861	27	63
<b>Northern HSCT</b>	<b>1,616</b>	<b>92</b>	<b>240</b>	<b>2,699</b>	<b>347</b>	<b>443</b>	<b>278</b>	<b>1,861</b>	<b>27</b>	<b>63</b>
Ards	603	32	32	482	52	29	43	268	10	0
Bangor	193	16	13	318	85	50	8	211	12	0
Downe	292	20	22	302	16	16	13	10	1	0
Lagan Valley	440	25	27	421	21	29	38	46	3	0
Ulster	1,086	81	82	1,449	230	213	39	678	18	0
<b>South Eastern HSCT</b>	<b>2,614</b>	<b>174</b>	<b>176</b>	<b>2,972</b>	<b>404</b>	<b>337</b>	<b>141</b>	<b>1,213</b>	<b>44</b>	<b>0</b>
Armagh Community	31	2	3	52	9	4	1	8	0	0
Banbridge	89	12	10	212	18	13	1	29	0	0
Craigavon Area	1,054	121	105	2,718	297	219	30	282	7	0
South Tyrone	174	10	40	133	6	12	0	14	1	0
<b>Southern HSCT</b>	<b>1,348</b>	<b>145</b>	<b>158</b>	<b>3,115</b>	<b>330</b>	<b>248</b>	<b>32</b>	<b>333</b>	<b>8</b>	<b>0</b>
Altnagelvin Area	751	76	140	2,381	260	378	67	279	6	0
Roe Valley	642	81	124	327	38	59	94	33	3	0
Tyrone County	95	11	14	94	9	17	4	8	0	0
<b>Western HSCT</b>	<b>1,488</b>	<b>168</b>	<b>278</b>	<b>2,802</b>	<b>307</b>	<b>454</b>	<b>165</b>	<b>320</b>	<b>9</b>	<b>0</b>
<b>NI Total</b>	<b>11,187</b>	<b>902</b>	<b>1,523</b>	<b>19,078</b>	<b>2,552</b>	<b>2,823</b>	<b>1,018</b>	<b>4,962</b>	<b>147</b>	<b>67</b>

Source: QOAR (Part 1)

Note: DNA = Did not attend, CNA = Could not attend

**Table 11: Specialty 110 - Activity by Hospital/HSC Trust for Trauma and Orthopaedic (T&O) Surgery, 2010/11**

Hospital/HSC Trust	Attendances						Hospital Cancellations	Patient Died	Private Patient Attendances	
	New			Review						
	Seen	DNA	CNA	Seen	DNA	CNA	New	Review		
Mater Infirmorum	1,147	163	61	1,145	292	116	39	107	1	0
Musgrave Park	16,289	1,327	1,116	31,379	4,272	2,963	653	1,183	8	3
RBHSC	2,285	225	198	5,624	726	614	59	584	1	0
Royal Victoria	8,213	679	368	24,497	4,127	2,051	154	1,088	41	0
<b>Belfast HSCT</b>	<b>27,934</b>	<b>2,394</b>	<b>1,743</b>	<b>62,645</b>	<b>9,417</b>	<b>5,744</b>	<b>905</b>	<b>2,962</b>	<b>51</b>	<b>3</b>
Downe	1,084	124	114	2,164	369	248	93	156	2	0
Lagan Valley	0	0	0	3,237	944	692	0	0	0	0
Ulster	4,554	647	196	13,146	2,343	1,213	132	764	26	0
<b>South Eastern HSCT</b>	<b>5,638</b>	<b>771</b>	<b>310</b>	<b>18,547</b>	<b>3,656</b>	<b>2,153</b>	<b>225</b>	<b>920</b>	<b>28</b>	<b>0</b>
Armagh Community	77	2	6	89	4	12	9	13	0	0
Craigavon Area	2,855	249	240	12,191	1,755	1,097	145	1,689	10	0
Daisy Hill	0	0	0	0	1	0	0	0	0	0
South Tyrone	107	6	17	132	12	18	3	6	0	0
<b>Southern HSCT</b>	<b>3,039</b>	<b>257</b>	<b>263</b>	<b>12,412</b>	<b>1,772</b>	<b>1,127</b>	<b>157</b>	<b>1,708</b>	<b>10</b>	<b>0</b>
Altnagelvin Area	8,271	989	1,116	19,235	2,064	2,412	646	1,648	35	3
Erne	1,280	126	73	1,670	175	154	118	275	3	0
Roe Valley	153	10	17	213	14	34	52	39	0	0
Tyrone County	1,207	161	83	1,373	235	105	30	61	1	0
<b>Western HSCT</b>	<b>10,911</b>	<b>1,286</b>	<b>1,289</b>	<b>22,491</b>	<b>2,488</b>	<b>2,705</b>	<b>846</b>	<b>2,023</b>	<b>39</b>	<b>3</b>
<b>NI Total</b>	<b>47,522</b>	<b>4,708</b>	<b>3,605</b>	<b>116,095</b>	<b>17,333</b>	<b>11,729</b>	<b>2,133</b>	<b>7,613</b>	<b>128</b>	<b>6</b>

Source: QOAR (Part 1)

Note: DNA = Did not attend, CNA = Could not attend



**Table 12: Specialty 120 - Activity by Hospital/HSC Trust for Ear, Nose and Throat (ENT), 2010/11**

Hospital/HSC Trust	Attendances						Hospital Cancellations		Patient	Private
	New			Review			New	Review	Died	Patient
	Seen	DNA	CNA	Seen	DNA	CNA				Attendances
Belfast City	3,128	202	504	4,129	508	808	131	300	6	0
Mater Infirmorum	1,819	135	186	580	118	102	58	31	5	0
RBHSC	1,896	141	184	3,627	758	819	150	561	1	0
Royal Victoria	4,235	388	544	10,123	1,695	1,887	280	848	41	0
<b>Belfast HSCT</b>	<b>11,078</b>	<b>866</b>	<b>1,418</b>	<b>18,459</b>	<b>3,079</b>	<b>3,616</b>	<b>619</b>	<b>1,740</b>	<b>53</b>	<b>0</b>
Antrim	2,139	182	334	2,413	415	360	126	446	2	110
Causeway	2,110	148	244	1,968	428	306	156	436	5	138
Mid Ulster	706	36	75	902	155	157	32	68	1	0
Moyle	285	19	41	480	63	87	44	100	0	0
Waveney	830	54	100	1,054	162	242	88	254	0	0
Whiteabbey	428	22	64	525	93	104	44	54	0	0
<b>Northern HSCT</b>	<b>6,498</b>	<b>461</b>	<b>858</b>	<b>7,342</b>	<b>1,316</b>	<b>1,256</b>	<b>490</b>	<b>1,358</b>	<b>8</b>	<b>248</b>
Ards	578	45	34	581	137	94	12	136	1	0
Bangor	2,503	151	212	962	145	217	152	369	6	0
Downe	1,413	110	150	1,014	116	99	96	110	0	0
Lagan Valley	1,429	99	82	1,587	142	140	38	49	3	0
Ulster	2,931	243	260	2,671	415	442	132	870	7	0
<b>South Eastern HSCT</b>	<b>8,854</b>	<b>648</b>	<b>738</b>	<b>6,815</b>	<b>955</b>	<b>992</b>	<b>430</b>	<b>1,534</b>	<b>17</b>	<b>0</b>
Armagh Community	311	30	30	415	55	36	25	10	0	0
Banbridge	295	29	48	409	39	59	14	36	0	0
Craigavon Area	5,271	375	692	5,502	665	608	77	251	4	0
Daisy Hill	1,900	164	216	1,914	254	268	93	162	1	178
South Tyrone	1,636	112	148	1,161	92	116	97	49	0	0
<b>Southern HSCT</b>	<b>9,413</b>	<b>710</b>	<b>1,134</b>	<b>9,401</b>	<b>1,105</b>	<b>1,087</b>	<b>306</b>	<b>508</b>	<b>5</b>	<b>178</b>

**Table 12: continued**

Hospital/HSC Trust	Attendances						Hospital Cancellations	Patient Died	Private Patient Attendances	
	New			Review						
	Seen	DNA	CNA	Seen	DNA	CNA	New	Review		
Altnagelvin Area	4,353	421	664	5,812	703	1,049	418	1,343	9	0
Erne	1,160	71	144	1,224	149	198	27	65	3	45
Roe Valley	382	36	67	173	22	17	27	42	0	0
Tyrone County	1,708	80	203	2,259	211	374	28	90	0	34
<b>Western HSCT</b>	<b>7,603</b>	<b>608</b>	<b>1,078</b>	<b>9,468</b>	<b>1,085</b>	<b>1,638</b>	<b>500</b>	<b>1,540</b>	<b>12</b>	<b>79</b>
<b>NI Total</b>	<b>43,446</b>	<b>3,293</b>	<b>5,226</b>	<b>51,485</b>	<b>7,540</b>	<b>8,589</b>	<b>2,345</b>	<b>6,680</b>	<b>95</b>	<b>505</b>

Source: QOAR (Part 1)

Note: DNA = Did not attend, CNA = Could not attend

**Table 13: Specialty 130 - Activity by Hospital/HSC Trust for Ophthalmology, 2010/11**

Hospital/HSC Trust	Attendances						Hospital Cancellations		Patient	Private
	Seen	New DNA	CNA	Seen	Review DNA	CNA	New	Review	Died	Patient Attendances
Belfast City	234	22	49	1,047	111	271	5	52	9	0
Mater Infirmorum	3,722	227	427	13,666	921	1,582	341	1,580	41	2
Royal Victoria	12,369	992	1,899	33,401	4,122	5,947	853	3,147	152	65
<b>Belfast HSCT</b>	<b>16,325</b>	<b>1,241</b>	<b>2,375</b>	<b>48,114</b>	<b>5,154</b>	<b>7,800</b>	<b>1,199</b>	<b>4,779</b>	<b>202</b>	<b>67</b>
Ards	1,514	92	105	1,783	351	160	72	763	25	0
Bangor	326	17	20	814	151	98	5	544	13	0
Downe	326	19	39	609	33	74	87	135	0	0
Lagan Valley	952	68	69	1,241	69	92	37	87	3	0
Ulster	896	80	64	1,379	284	239	46	1,439	24	0
<b>South Eastern HSCT</b>	<b>4,014</b>	<b>276</b>	<b>297</b>	<b>5,826</b>	<b>888</b>	<b>663</b>	<b>247</b>	<b>2,968</b>	<b>65</b>	<b>0</b>
Armagh Community	323	13	25	1,139	77	99	7	36	2	0
Craigavon Area	944	57	93	1,772	117	141	18	80	3	0
Daisy Hill	1,200	79	136	2,393	291	255	50	147	6	13
South Tyrone	425	26	39	796	49	40	15	37	0	0
<b>Southern HSCT</b>	<b>2,892</b>	<b>175</b>	<b>293</b>	<b>6,100</b>	<b>534</b>	<b>535</b>	<b>90</b>	<b>300</b>	<b>11</b>	<b>13</b>
Altnagelvin Area	5,340	371	665	14,052	1,404	1,993	385	2,767	71	14
Erne	621	60	57	1,557	160	164	28	180	6	0
Roe Valley	101	13	22	141	18	28	49	138	2	0
Tyrone County	455	43	42	1,187	65	93	13	66	1	0
<b>Western HSCT</b>	<b>6,517</b>	<b>487</b>	<b>786</b>	<b>16,937</b>	<b>1,647</b>	<b>2,278</b>	<b>475</b>	<b>3,151</b>	<b>80</b>	<b>14</b>
<b>NI Total</b>	<b>29,748</b>	<b>2,179</b>	<b>3,751</b>	<b>76,977</b>	<b>8,223</b>	<b>11,276</b>	<b>2,011</b>	<b>11,198</b>	<b>358</b>	<b>94</b>

Source: QOAR (Part 1)

Note: DNA = Did not attend, CNA = Could not attend

**Table 14: Specialty 140 - Activity by Hospital/HSC Trust for Oral Surgery, 2010/11**

Hospital/HSC Trust	Attendances						Hospital Cancellations		Patient	Private
	Seen	<u>New</u> DNA	CNA	Seen	<u>Review</u> DNA	CNA	New	Review	Died	Patient Attendances
Belfast City	101	51	54	53	21	15	14	11	0	0
Royal Victoria	3,091	104	203	2,564	492	407	86	544	7	5
<b>Belfast HSCT</b>	<b>3,192</b>	<b>155</b>	<b>257</b>	<b>2,617</b>	<b>513</b>	<b>422</b>	<b>100</b>	<b>555</b>	<b>7</b>	<b>5</b>
Antrim	250	22	56	308	73	88	23	45	2	0
Mid Ulster	93	3	11	161	34	30	10	9	0	0
<b>Northern HSCT</b>	<b>343</b>	<b>25</b>	<b>67</b>	<b>469</b>	<b>107</b>	<b>118</b>	<b>33</b>	<b>54</b>	<b>2</b>	<b>0</b>
Downe	430	31	57	123	23	24	2	2	0	0
Ulster	2,232	241	176	4,785	1,174	546	69	479	11	100
<b>South Eastern HSCT</b>	<b>2,662</b>	<b>272</b>	<b>233</b>	<b>4,908</b>	<b>1,197</b>	<b>570</b>	<b>71</b>	<b>481</b>	<b>11</b>	<b>100</b>
Craigavon Area	212	14	31	342	67	54	24	24	1	0
Daisy Hill	487	40	64	808	116	158	9	67	1	56
<b>Southern HSCT</b>	<b>699</b>	<b>54</b>	<b>95</b>	<b>1,150</b>	<b>183</b>	<b>212</b>	<b>33</b>	<b>91</b>	<b>2</b>	<b>56</b>
Altnagelvin Area	3,217	304	536	3,722	451	597	495	583	16	4
Erne	516	31	62	631	50	70	36	77	6	0
<b>Western HSCT</b>	<b>3,733</b>	<b>335</b>	<b>598</b>	<b>4,353</b>	<b>501</b>	<b>667</b>	<b>531</b>	<b>660</b>	<b>22</b>	<b>4</b>
<b>NI Total</b>	<b>10,629</b>	<b>841</b>	<b>1,250</b>	<b>13,497</b>	<b>2,501</b>	<b>1,989</b>	<b>768</b>	<b>1,841</b>	<b>44</b>	<b>165</b>

Source: QOAR (Part 1)

Note: DNA = Did not attend, CNA = Could not attend

**Table 15: Specialty 141 - Activity by Hospital/HSC Trust for Restorative Dentistry, 2010/11**

Hospital/HSC Trust	Attendances						Hospital Cancellations		Patient Died	Private Patient Attendances
	Seen	<u>New</u> DNA	CNA	Seen	<u>Review</u> DNA	CNA	New	Review		
Royal Victoria	3,055	246	420	7,957	1,282	1,352	170	1,369	21	2
<b>Belfast HSCT</b>	<b>3,055</b>	<b>246</b>	<b>420</b>	<b>7,957</b>	<b>1,282</b>	<b>1,352</b>	<b>170</b>	<b>1,369</b>	<b>21</b>	<b>2</b>
Ulster	1	0	0	35	6	2	0	14	0	0
<b>South Eastern HSCT</b>	<b>1</b>	<b>0</b>	<b>0</b>	<b>35</b>	<b>6</b>	<b>2</b>	<b>0</b>	<b>14</b>	<b>0</b>	<b>0</b>
Craigavon Area	0	0	0	54	5	10	0	9	0	0
<b>Southern HSCT</b>	<b>0</b>	<b>0</b>	<b>0</b>	<b>54</b>	<b>5</b>	<b>10</b>	<b>0</b>	<b>9</b>	<b>0</b>	<b>0</b>
<b>NI Total</b>	<b>3,056</b>	<b>246</b>	<b>420</b>	<b>8,046</b>	<b>1,293</b>	<b>1,364</b>	<b>170</b>	<b>1,392</b>	<b>21</b>	<b>2</b>

Source: QOAR (Part 1)

Note: DNA = Did not attend, CNA = Could not attend

**Table 16: Specialty 142 - Activity by Hospital/HSC Trust for Paediatric Dentistry, 2010/11**

Hospital/HSC Trust	Attendances						Hospital Cancellations	Patient Died	Private Patient Attendances	
	New			Review						
	Seen	DNA	CNA	Seen	DNA	CNA	New	Review		
RBHSC	443	58	19	1,948	731	203	10	176	1	0
<b>Belfast HSCT</b>	<b>443</b>	<b>58</b>	<b>19</b>	<b>1,948</b>	<b>731</b>	<b>203</b>	<b>10</b>	<b>176</b>	<b>1</b>	<b>0</b>
Craigavon	95	29	6	614	327	25	8	19	1	0
<b>Southern HSCT</b>	<b>95</b>	<b>29</b>	<b>6</b>	<b>614</b>	<b>327</b>	<b>25</b>	<b>8</b>	<b>19</b>	<b>1</b>	<b>0</b>
<b>NI Total</b>	<b>538</b>	<b>87</b>	<b>25</b>	<b>2,562</b>	<b>1,058</b>	<b>228</b>	<b>18</b>	<b>195</b>	<b>2</b>	<b>0</b>

Source: QOAR (Part 1)

Note: DNA = Did not attend, CNA = Could not attend

**Table 17: Specialty 143 - Activity by Hospital/HSC Trust for Orthodontics, 2010/11**

Hospital/HSC Trust	Attendances						Hospital Cancellations	Patient Died	Private Patient Attendances	
	New			Review						
	Seen	DNA	CNA	Seen	DNA	CNA	New	Review		
Royal Victoria	394	33	44	3,003	409	427	12	157	0	1
<b>Belfast HSCT</b>	<b>394</b>	<b>33</b>	<b>44</b>	<b>3,003</b>	<b>409</b>	<b>427</b>	<b>12</b>	<b>157</b>	<b>0</b>	<b>1</b>
Causeway	71	5	12	552	88	80	1	51	0	0
Mid Ulster	71	6	7	576	84	65	6	129	0	0
Waveney	146	20	33	1,650	150	347	6	188	0	0
<b>Northern HSCT</b>	<b>288</b>	<b>31</b>	<b>52</b>	<b>2,778</b>	<b>322</b>	<b>492</b>	<b>13</b>	<b>368</b>	<b>0</b>	<b>0</b>
Craigavon Area	443	15	58	3,043	370	477	2	84	0	0
<b>Southern HSCT</b>	<b>443</b>	<b>15</b>	<b>58</b>	<b>3,043</b>	<b>370</b>	<b>477</b>	<b>2</b>	<b>84</b>	<b>0</b>	<b>0</b>
Altnagelvin Area	313	19	31	2,691	158	349	8	285	0	0
Erne	167	10	25	1,688	154	232	12	481	0	0
<b>Western HSCT</b>	<b>480</b>	<b>29</b>	<b>56</b>	<b>4,379</b>	<b>312</b>	<b>581</b>	<b>20</b>	<b>766</b>	<b>0</b>	<b>0</b>
<b>NI Total</b>	<b>1,605</b>	<b>108</b>	<b>210</b>	<b>13,203</b>	<b>1,413</b>	<b>1,977</b>	<b>47</b>	<b>1,375</b>	<b>0</b>	<b>1</b>

Source: QOAR (Part 1)

Note: DNA = Did not attend, CNA = Could not attend

**Table 18: Specialty 150 - Activity by Hospital/HSC Trust for Neurosurgery, 2010/11**

Hospital/HSC Trust	Attendances						Hospital Cancellations		Patient	Private
	Seen	<u>New</u> DNA	CNA	Seen	<u>Review</u> DNA	CNA	New	Review	Died	Patient Attendances
RBHSC	69	4	3	388	73	46	4	87	3	0
Royal Victoria	1,331	65	166	2,585	361	457	172	1,930	28	0
<b>Belfast HSCT</b>	<b>1,400</b>	<b>69</b>	<b>169</b>	<b>2,973</b>	<b>434</b>	<b>503</b>	<b>176</b>	<b>2,017</b>	<b>31</b>	<b>0</b>
<b>NI Total</b>	<b>1,400</b>	<b>69</b>	<b>169</b>	<b>2,973</b>	<b>434</b>	<b>503</b>	<b>176</b>	<b>2,017</b>	<b>31</b>	<b>0</b>

Source: QOAR (Part 1)

Note: DNA = Did not attend, CNA = Could not attend



**Table 19: Specialty 160 - Activity by Hospital/HSC Trust for Plastic Surgery, 2010/11**

Hospital/HSC Trust	Attendances						Hospital Cancellations		Patient	Private
	Seen	New DNA	CNA	Seen	Review DNA	CNA	New	Review	Died	Patient Attendances
RBHSC	613	37	70	1,415	210	268	79	375	0	0
Royal Victoria	23	11	5	648	114	83	1	51	1	0
<b>Belfast HSCT</b>	<b>636</b>	<b>48</b>	<b>75</b>	<b>2,063</b>	<b>324</b>	<b>351</b>	<b>80</b>	<b>426</b>	<b>1</b>	<b>0</b>
Ards	215	9	41	622	85	133	46	101	2	0
Ulster	4,764	198	343	9,042	1,831	1,623	304	1,034	42	0
<b>South Eastern HSCT</b>	<b>4,979</b>	<b>207</b>	<b>384</b>	<b>9,664</b>	<b>1,916</b>	<b>1,756</b>	<b>350</b>	<b>1,135</b>	<b>44</b>	<b>0</b>
<b>NI Total</b>	<b>5,615</b>	<b>255</b>	<b>459</b>	<b>11,727</b>	<b>2,240</b>	<b>2,107</b>	<b>430</b>	<b>1,561</b>	<b>45</b>	<b>0</b>

Source: QOAR (Part 1)

Note: DNA = Did not attend, CNA = Could not attend

**Table 20: Specialty 170 - Activity by Hospital/HSC Trust for Cardiac Surgery, 2010/11**

Hospital/HSC Trust	Attendances						Hospital Cancellations	Patient Died	Private Patient Attendances	
	New			Review						
	Seen	DNA	CNA	Seen	DNA	CNA	New	Review		
Royal Victoria	1,061	24	82	1,394	113	105	84	130	6	4
Belfast HSCT	1,061	24	82	1,394	113	105	84	130	6	4
<b>NI Total</b>	<b>1,061</b>	<b>24</b>	<b>82</b>	<b>1,394</b>	<b>113</b>	<b>105</b>	<b>84</b>	<b>130</b>	<b>6</b>	<b>4</b>

Source: QOAR (Part 1)

Note: DNA = Did not attend, CNA = Could not attend

**Table 21: Specialty 171 - Activity by Hospital/HSC Trust for Paediatric Surgery, 2010/11**

Hospital/HSC Trust	Attendances						Hospital Cancellations		Patient	Private
	Seen	New DNA	CNA	Seen	Review DNA	CNA	New	Review	Died	Patient Attendances
RBHSC	1,779	95	192	2,351	392	395	115	649	3	0
<b>Belfast HSC Trust</b>	<b>1,779</b>	<b>95</b>	<b>192</b>	<b>2,351</b>	<b>392</b>	<b>395</b>	<b>115</b>	<b>649</b>	<b>3</b>	<b>0</b>
Ulster	916	112	107	641	204	136	163	434	0	0
<b>South Eastern HSC Trust</b>	<b>916</b>	<b>112</b>	<b>107</b>	<b>641</b>	<b>204</b>	<b>136</b>	<b>163</b>	<b>434</b>	<b>0</b>	<b>0</b>
<b>NI Total</b>	<b>2,695</b>	<b>207</b>	<b>299</b>	<b>2,992</b>	<b>596</b>	<b>531</b>	<b>278</b>	<b>1,083</b>	<b>3</b>	<b>0</b>

Source: QOAR (Part 1)

Note: DNA = Did not attend, CNA = Could not attend

**Table 22: Specialty 172 - Activity by Hospital/HSC Trust for Thoracic Surgery, 2010/11**

Hospital/HSC Trust	Attendances						Hospital Cancellations		Patient	Private
	Seen	New DNA	CNA	Seen	Review DNA	CNA	New	Review	Died	Patient Attendances
Belfast City	76	8	9	134	13	20	6	20	1	0
Royal Victoria	614	45	62	1,580	212	262	99	348	10	1
<b>Belfast HSCT</b>	<b>690</b>	<b>53</b>	<b>71</b>	<b>1,714</b>	<b>225</b>	<b>282</b>	<b>105</b>	<b>368</b>	<b>11</b>	<b>1</b>
Craigavon Area	4	0	0	76	8	7	0	6	0	0
Daisy Hill	26	2	7	44	1	5	0	3	0	0
<b>Southern HSCT</b>	<b>30</b>	<b>2</b>	<b>7</b>	<b>120</b>	<b>9</b>	<b>12</b>	<b>0</b>	<b>9</b>	<b>0</b>	<b>0</b>
Altnagelvin Area	2	0	0	42	1	2	0	6	0	0
<b>Western HSCT</b>	<b>2</b>	<b>0</b>	<b>0</b>	<b>42</b>	<b>1</b>	<b>2</b>	<b>0</b>	<b>6</b>	<b>0</b>	<b>0</b>
<b>NI Total</b>	<b>722</b>	<b>55</b>	<b>78</b>	<b>1,876</b>	<b>235</b>	<b>296</b>	<b>105</b>	<b>383</b>	<b>11</b>	<b>1</b>

Source: QOAR (Part 1)

Note: DNA = Did not attend, CNA = Could not attend

**Table 23: Specialty 180 - Activity by Hospital/HSC Trust for Accident & Emergency, 2010/11<sup>9</sup>**

Hospital/HSC Trust	Attendances						Hospital Cancellations	Patient Died	Private Patient Attendances	
	New			Review						
	Seen	DNA	CNA	Seen	DNA	CNA	New	Review		
Antrim	0	0	0	383	0	0	0	0	0	0
Whiteabbey	41	0	0	7	0	0	0	0	0	0
<b>Northern HSCT</b>	<b>41</b>	<b>0</b>	<b>0</b>	<b>390</b>	<b>0</b>	<b>0</b>	<b>0</b>	<b>0</b>	<b>0</b>	<b>0</b>
Lagan Valley	0	0	0	819	252	176	0	0	0	0
Ards	0	0	0	244	57	15	0	4	0	0
Bangor	0	0	0	193	49	10	0	3	0	0
Downe	0	0	0	623	179	155	0	0	0	0
Ulster	0	0	0	2,169	1,013	118	0	0	0	0
<b>South Eastern HSCT</b>	<b>0</b>	<b>0</b>	<b>0</b>	<b>4,048</b>	<b>1,550</b>	<b>474</b>	<b>0</b>	<b>7</b>	<b>0</b>	<b>0</b>
Daisy Hill	125	12	6	3,457	654	336	6	180	1	4
<b>Southern HSCT</b>	<b>125</b>	<b>12</b>	<b>6</b>	<b>3,457</b>	<b>654</b>	<b>336</b>	<b>6</b>	<b>180</b>	<b>1</b>	<b>4</b>
<b>NI Total</b>	<b>166</b>	<b>12</b>	<b>6</b>	<b>7,895</b>	<b>2,204</b>	<b>810</b>	<b>6</b>	<b>187</b>	<b>1</b>	<b>4</b>

Source: QOAR (Part 1)

Note: DNA = Did not attend, CNA = Could not attend

<sup>9</sup> Refer to Explanatory Notes Point 3

**Table 24: Specialty 190 - Activity by Hospital/HSC Trust for Anaesthetics, 2010/11**

Hospital/HSC Trust	Attendances						Hospital Cancellations		Patient	Private
	New			Review			New	Review	Died	Patient
	Seen	DNA	CNA	Seen	DNA	CNA				Attendances
Royal Victoria	0	0	0	52	16	10	0	0	0	0
<b>Belfast HSC</b>	<b>0</b>	<b>0</b>	<b>0</b>	<b>52</b>	<b>16</b>	<b>10</b>	<b>0</b>	<b>0</b>	<b>0</b>	<b>0</b>
Causeway	286	1	1	1,363	7	22	0	20	1	0
<b>Northern HSC</b>	<b>286</b>	<b>1</b>	<b>1</b>	<b>1,363</b>	<b>7</b>	<b>22</b>	<b>0</b>	<b>20</b>	<b>1</b>	<b>0</b>
<b>NI Total</b>	<b>286</b>	<b>1</b>	<b>1</b>	<b>1,415</b>	<b>23</b>	<b>32</b>	<b>0</b>	<b>20</b>	<b>1</b>	<b>0</b>

Source: QOAR (Part 1)

Note: DNA = Did not attend, CNA = Could not attend

**Table 25: Specialty 191 - Activity by Hospital/HSC Trust for Pain Management, 2010/11**

Hospital/HSC Trust	Attendances						Hospital Cancellations		Patient	Private
	Seen	New DNA	CNA	Seen	Review DNA	CNA	New	Review	Died	Patient Attendances
Belfast City	529	43	86	1,302	125	232	33	166	2	0
Mater Infirmorum	387	44	53	99	16	8	55	61	1	0
Musgrave Park	706	163	95	600	158	81	84	96	0	0
<b>Belfast HSCT</b>	<b>1,622</b>	<b>250</b>	<b>234</b>	<b>2,001</b>	<b>299</b>	<b>321</b>	<b>172</b>	<b>323</b>	<b>3</b>	<b>0</b>
Antrim	183	15	35	1,966	75	102	27	153	3	16
Causeway	545	31	76	602	82	68	21	64	0	1
Mid Ulster	112	9	65	244	10	20	7	32	0	0
Waveney	54	1	13	92	15	23	1	28	0	0
Whiteabbey	0	0	0	336	0	0	0	0	0	0
<b>Northern HSCT</b>	<b>894</b>	<b>56</b>	<b>189</b>	<b>3,240</b>	<b>182</b>	<b>213</b>	<b>56</b>	<b>277</b>	<b>3</b>	<b>17</b>
Ulster	1,247	85	121	1,635	125	166	44	78	1	0
<b>South Eastern HSCT</b>	<b>1,247</b>	<b>85</b>	<b>121</b>	<b>1,635</b>	<b>125</b>	<b>166</b>	<b>44</b>	<b>78</b>	<b>1</b>	<b>0</b>
Banbridge	25	3	1	28	1	2	3	4	0	0
Craigavon Area	690	57	109	561	48	79	71	47	2	0
Daisy Hill	122	9	21	38	4	4	6	2	0	0
South Tyrone	270	26	43	223	18	18	21	18	0	0
<b>Southern HSCT</b>	<b>1,107</b>	<b>95</b>	<b>174</b>	<b>850</b>	<b>71</b>	<b>103</b>	<b>101</b>	<b>71</b>	<b>2</b>	<b>0</b>
Altnagelvin Area	380	48	103	790	84	139	59	140	2	0
Erne	1	0	0	112	8	0	0	0	0	0
Tyrone County	326	18	41	94	7	7	9	6	0	0
<b>Western HSCT</b>	<b>707</b>	<b>66</b>	<b>144</b>	<b>996</b>	<b>99</b>	<b>146</b>	<b>68</b>	<b>146</b>	<b>2</b>	<b>0</b>
<b>NI Total</b>	<b>5,577</b>	<b>552</b>	<b>862</b>	<b>8,722</b>	<b>776</b>	<b>949</b>	<b>441</b>	<b>895</b>	<b>11</b>	<b>17</b>

Source: QOAR (Part 1)

Note: DNA = Did not attend, CNA = Could not attend

**Table 26: Specialty 300 - Activity by Hospital/HSC Trust for General Medicine, 2010/11**

Hospital/HSC Trust	Attendances						Hospital Cancellations	Patient Died	Private Patient Attendances	
	New			Review						
	Seen	DNA	CNA	Seen	DNA	CNA	New	Review		
Belfast City	839	89	181	4,240	561	996	70	365	17	0
Mater Infirmorum	2,408	263	273	7,630	1,712	1,031	114	587	75	0
Royal Victoria	1,924	185	318	4,634	1,398	1,022	278	714	25	0
<b>Belfast HSCT</b>	<b>5,171</b>	<b>537</b>	<b>772</b>	<b>16,504</b>	<b>3,671</b>	<b>3,049</b>	<b>462</b>	<b>1,666</b>	<b>117</b>	<b>0</b>
Antrim	1,242	111	187	2,863	496	575	141	612	36	0
Carrickfergus	10	0	0	243	33	51	7	101	3	0
Causeway	1,844	129	201	3,219	525	401	119	1,496	35	0
Mid Ulster	885	44	130	5,891	898	1,018	37	363	31	0
Moyle	69	6	7	319	79	68	11	107	3	0
Waveney	449	38	82	1,411	235	386	45	229	8	0
Whiteabbey	511	44	86	1,829	343	455	75	444	14	29
<b>Northern HSCT</b>	<b>5,010</b>	<b>372</b>	<b>693</b>	<b>15,775</b>	<b>2,609</b>	<b>2,954</b>	<b>435</b>	<b>3,352</b>	<b>130</b>	<b>29</b>
Ards	387	45	28	2,321	567	299	43	648	18	0
Bangor	149	13	9	1,330	259	210	3	441	14	0
Downe	779	66	62	2,870	347	406	91	498	19	0
Lagan Valley	1,480	111	168	4,344	492	429	69	514	31	0
Ulster	2,934	254	340	9,899	1,468	1,285	183	3,063	81	0
<b>South Eastern HSCT</b>	<b>5,729</b>	<b>489</b>	<b>607</b>	<b>20,764</b>	<b>3,133</b>	<b>2,629</b>	<b>389</b>	<b>5,164</b>	<b>163</b>	<b>0</b>
Armagh Community	59	5	7	446	52	39	14	67	2	0
Craigavon Area	824	57	90	1,756	143	187	31	109	4	0
Daisy Hill	1,278	93	150	4,382	570	524	64	408	44	0
Kilkeel Primary Care Centre	12	3	0	59	4	2	0	4	1	0
South Tyrone	542	37	73	607	56	60	32	129	0	0
<b>Southern HSCT</b>	<b>2,715</b>	<b>195</b>	<b>320</b>	<b>7,250</b>	<b>825</b>	<b>812</b>	<b>141</b>	<b>717</b>	<b>51</b>	<b>0</b>



**Table 26: continued**

Hospital/HSC Trust	Attendances						Hospital Cancellations	Patient Died	Private Patient Attendances	
	New			Review						
	Seen	DNA	CNA	Seen	DNA	CNA				
Altnagelvin Area	2,404	281	391	9,508	1,151	1,461	339	1,225	37	0
Erne	1,220	143	198	2,763	324	537	122	835	10	0
Roe Valley	159	23	16	717	122	143	35	133	3	0
Tyrone County	436	49	60	1,243	194	253	37	335	14	0
<b>Western HSCT</b>	<b>4,219</b>	<b>496</b>	<b>665</b>	<b>14,231</b>	<b>1,791</b>	<b>2,394</b>	<b>533</b>	<b>2,528</b>	<b>64</b>	<b>0</b>
<b>NI Total</b>	<b>22,844</b>	<b>2,089</b>	<b>3,057</b>	<b>74,524</b>	<b>12,029</b>	<b>11,838</b>	<b>1,960</b>	<b>13,427</b>	<b>525</b>	<b>29</b>

Source: QOAR (Part 1)

Note: DNA = Did not attend, CNA = Could not attend

**Table 27: Specialty 301 - Activity by Hospital/HSC Trust for Gastroenterology, 2010/11**

Hospital/HSC Trust	Attendances						Hospital Cancellations	Patient Died	Private Patient Attendances	
	New			Review						
	Seen	DNA	CNA	Seen	DNA	CNA	New	Review		
Belfast City	1,568	151	287	2,528	431	623	57	176	19	0
Royal Victoria	2,461	241	364	5,759	1,206	990	103	2,288	48	0
<b>Belfast HSCT</b>	<b>4,029</b>	<b>392</b>	<b>651</b>	<b>8,287</b>	<b>1,637</b>	<b>1,613</b>	<b>160</b>	<b>2,464</b>	<b>67</b>	<b>0</b>
Antrim	860	77	169	1,660	225	258	139	295	9	0
Causeway	325	34	41	423	73	49	51	292	6	0
Mid Ulster	210	23	42	243	31	48	35	61	3	0
Whiteabbey	1,545	92	559	1,484	206	321	209	458	11	0
<b>Northern HSCT</b>	<b>2,940</b>	<b>226</b>	<b>811</b>	<b>3,810</b>	<b>535</b>	<b>676</b>	<b>434</b>	<b>1,106</b>	<b>29</b>	<b>0</b>
Downe	297	20	21	444	43	64	31	80	2	0
<b>South Eastern HSCT</b>	<b>297</b>	<b>20</b>	<b>21</b>	<b>444</b>	<b>43</b>	<b>64</b>	<b>31</b>	<b>80</b>	<b>2</b>	<b>0</b>
Armagh Community	159	10	19	119	10	5	1	2	0	0
Craigavon Area	89	4	14	0	0	0	1	0	0	0
Daisy Hill	318	45	60	357	47	47	7	50	2	0
South Tyrone	68	3	3	0	0	0	1	0	0	0
<b>Southern HSCT</b>	<b>634</b>	<b>62</b>	<b>96</b>	<b>476</b>	<b>57</b>	<b>52</b>	<b>10</b>	<b>52</b>	<b>2</b>	<b>0</b>
<b>NI Total</b>	<b>7,900</b>	<b>700</b>	<b>1,579</b>	<b>13,017</b>	<b>2,272</b>	<b>2,405</b>	<b>635</b>	<b>3,702</b>	<b>100</b>	<b>0</b>

Source: QOAR (Part 1)

Note: DNA = Did not attend, CNA = Could not attend

**Table 28: Specialty 302 - Activity by Hospital/HSC Trust for Endocrinology, 2010/11**

Hospital/HSC Trust	Attendances						Hospital Cancellations	Patient Died	Private Patient Attendances	
	New			Review						
	Seen	DNA	CNA	Seen	DNA	CNA	New	Review		
Belfast City	409	93	94	3,398	386	977	26	153	20	0
Royal Victoria	1,566	84	227	10,593	2,976	1,799	39	1,955	100	4
<b>Belfast HSCT</b>	<b>1,975</b>	<b>177</b>	<b>321</b>	<b>13,991</b>	<b>3,362</b>	<b>2,776</b>	<b>65</b>	<b>2,108</b>	<b>120</b>	<b>4</b>
Causeway	206	13	26	216	60	25	25	164	1	0
<b>Northern HSCT</b>	<b>206</b>	<b>13</b>	<b>26</b>	<b>216</b>	<b>60</b>	<b>25</b>	<b>25</b>	<b>164</b>	<b>1</b>	<b>0</b>
Lagan Valley	116	8	5	574	60	59	0	18	4	0
<b>South Eastern HSCT</b>	<b>116</b>	<b>8</b>	<b>5</b>	<b>574</b>	<b>60</b>	<b>59</b>	<b>0</b>	<b>18</b>	<b>4</b>	<b>0</b>
Banbridge	18	5	7	327	35	31	0	1	0	0
Craigavon Area	180	17	23	1,676	184	236	8	32	3	0
Daisy Hill	232	18	29	1,106	154	183	19	93	4	1
Kilkeel Primary Care Centre	19	3	5	178	24	19	0	9	0	0
South Tyrone	47	13	4	847	89	106	0	9	1	0
<b>Southern HSCT</b>	<b>496</b>	<b>56</b>	<b>68</b>	<b>4,134</b>	<b>486</b>	<b>575</b>	<b>27</b>	<b>144</b>	<b>8</b>	<b>1</b>
<b>NI Total</b>	<b>2,793</b>	<b>254</b>	<b>420</b>	<b>18,915</b>	<b>3,968</b>	<b>3,435</b>	<b>117</b>	<b>2,434</b>	<b>133</b>	<b>5</b>

Source: QOAR (Part 1)

Note: DNA = Did not attend, CNA = Could not attend

**Table 29: Specialty 303 - Activity by Hospital/HSC Trust for Haematology (Clinical), 2010/11**

Hospital/HSC Trust	Attendances						Hospital Cancellations	Patient Died	Private Patient Attendances	
	New			Review						
	Seen	DNA	CNA	Seen	DNA	CNA	New	Review		
Belfast City	1,583	211	225	20,201	2,221	1,894	129	1,061	78	4
NI Cancer Centre	0	0	0	1,317	0	0	0	8	0	0
Royal Victoria	1	0	0	1,063	99	69	0	24	1	0
<b>Belfast HSCT</b>	<b>1,584</b>	<b>211</b>	<b>225</b>	<b>22,581</b>	<b>2,320</b>	<b>1,963</b>	<b>129</b>	<b>1,093</b>	<b>79</b>	<b>4</b>
Antrim	417	47	44	5,960	249	319	21	319	26	0
Mid Ulster	54	7	5	239	40	20	3	19	3	0
Whiteabbey	59	9	12	219	21	28	11	58	3	0
<b>Northern HSCT</b>	<b>530</b>	<b>63</b>	<b>61</b>	<b>6,418</b>	<b>310</b>	<b>367</b>	<b>35</b>	<b>396</b>	<b>32</b>	<b>0</b>
Ards	126	11	13	658	65	75	13	287	5	0
Bangor	95	7	11	263	30	41	17	118	1	0
Ulster	379	31	35	2,503	240	205	49	587	26	0
<b>South Eastern HSCT</b>	<b>600</b>	<b>49</b>	<b>59</b>	<b>3,424</b>	<b>335</b>	<b>321</b>	<b>79</b>	<b>992</b>	<b>32</b>	<b>0</b>
Craigavon Area	617	43	43	7,134	731	300	19	430	25	0
Daisy Hill	58	7	5	299	21	23	6	11	3	0
South Tyrone	23	1	1	2,717	232	173	1	59	3	0
<b>Southern HSCT</b>	<b>698</b>	<b>51</b>	<b>49</b>	<b>10,150</b>	<b>984</b>	<b>496</b>	<b>26</b>	<b>500</b>	<b>31</b>	<b>0</b>
Altnagelvin Area	214	25	32	3,069	354	364	36	904	13	0
Erne	0	0	0	371	24	51	0	78	1	0
Tyrone County	47	1	2	813	33	71	11	253	6	0
<b>Western HSCT</b>	<b>261</b>	<b>26</b>	<b>34</b>	<b>4,253</b>	<b>411</b>	<b>486</b>	<b>47</b>	<b>1,235</b>	<b>20</b>	<b>0</b>
<b>NI Total</b>	<b>3,673</b>	<b>400</b>	<b>428</b>	<b>46,826</b>	<b>4,360</b>	<b>3,633</b>	<b>316</b>	<b>4,216</b>	<b>194</b>	<b>4</b>

Source: QOAR (Part 1)

Note: DNA = Did not attend, CNA = Could not attend

**Table 30: Specialty 310 - Activity by Hospital/HSC Trust for Audiological Medicine, 2010/11**

Hospital/HSC Trust	Attendances						Hospital Cancellations		Patient	Private
	Seen	<u>New</u> DNA	CNA	Seen	<u>Review</u> DNA	CNA	New	Review	Died	Patient Attendances
Royal Victoria	70	20	5	1	1	0	1	0	0	0
<b>Belfast HSC</b>	<b>70</b>	<b>20</b>	<b>5</b>	<b>1</b>	<b>1</b>	<b>0</b>	<b>1</b>	<b>0</b>	<b>0</b>	<b>0</b>
<b>NI Total</b>	<b>70</b>	<b>20</b>	<b>5</b>	<b>1</b>	<b>1</b>	<b>0</b>	<b>1</b>	<b>0</b>	<b>0</b>	<b>0</b>

Source: QOAR (Part 1)

Note: DNA = Did not attend, CNA = Could not attend

**Table 31: Specialty 311 - Activity by Hospital/HSC Trust for Clinical Genetics, 2010/11**

Hospital/HSC Trust	Attendances						Hospital Cancellations	Patient Died	Private Patient Attendances	
	New			Review						
	Seen	DNA	CNA	Seen	DNA	CNA	New	Review		
Belfast City	2,317	215	228	590	101	72	140	94	4	0
Royal Victoria	11	0	1	17	0	2	0	0	0	0
<b>Belfast HSCT</b>	<b>2,328</b>	<b>215</b>	<b>229</b>	<b>607</b>	<b>101</b>	<b>74</b>	<b>140</b>	<b>94</b>	<b>4</b>	<b>0</b>
<b>NI Total</b>	<b>2,328</b>	<b>215</b>	<b>229</b>	<b>607</b>	<b>101</b>	<b>74</b>	<b>140</b>	<b>94</b>	<b>4</b>	<b>0</b>

Source: QOAR (Part 1)

Note: DNA = Did not attend, CNA = Could not attend

**Table 32: Specialty 314 - Activity by Hospital/HSC Trust for Rehabilitation, 2010/11**

Hospital/HSC Trust	Attendances						Hospital Cancellations		Patient	Private
	New			Review			New	Review	Died	Patient
	Seen	DNA	CNA	Seen	DNA	CNA				
Musgrave Park	890	48	58	6,515	661	1,154	3	633	5	0
Royal Victoria	69	13	7	251	76	45	3	65	0	0
<b>Belfast HSCT</b>	<b>959</b>	<b>61</b>	<b>65</b>	<b>6,766</b>	<b>737</b>	<b>1,199</b>	<b>6</b>	<b>698</b>	<b>5</b>	<b>0</b>
<b>NI Total</b>	<b>959</b>	<b>61</b>	<b>65</b>	<b>6,766</b>	<b>737</b>	<b>1,199</b>	<b>6</b>	<b>698</b>	<b>5</b>	<b>0</b>

Source: QOAR (Part 1)

Note: DNA = Did not attend, CNA = Could not attend

**Table 33: Specialty 315 - Activity by Hospital/HSC Trust for Palliative Medicine, 2010/11**

Hospital/HSC Trust	Attendances						Hospital Cancellations	Patient Died	Private Patient Attendances	
	New			Review						
	Seen	DNA	CNA	Seen	DNA	CNA	New	Review		
Belfast City	0	0	0	273	0	0	0	0	0	0
NI Cancer Centre	75	7	16	828	59	87	28	97	9	0
<b>Belfast HSCT</b>	<b>75</b>	<b>7</b>	<b>16</b>	<b>1,101</b>	<b>59</b>	<b>87</b>	<b>28</b>	<b>97</b>	<b>9</b>	<b>0</b>
Antrim	0	0	0	397	0	0	0	0	0	0
Causeway	0	0	0	281	0	0	0	0	0	0
Mid Ulster	0	0	0	65	0	0	0	0	0	0
Moyle	0	0	0	24	0	0	0	0	0	0
Waveney	0	0	0	26	0	0	0	0	0	0
Whiteabbey	0	0	0	17	0	0	0	0	0	0
<b>Northern HSCT</b>	<b>0</b>	<b>0</b>	<b>0</b>	<b>810</b>	<b>0</b>	<b>0</b>	<b>0</b>	<b>0</b>	<b>0</b>	<b>0</b>
Ulster	26	0	3	26	3	1	3	0	1	0
<b>South Eastern HSCT</b>	<b>26</b>	<b>0</b>	<b>3</b>	<b>26</b>	<b>3</b>	<b>1</b>	<b>3</b>	<b>0</b>	<b>1</b>	<b>0</b>
Craigavon Area	39	3	14	246	22	60	3	20	11	0
South Tyrone	20	4	8	140	23	39	2	15	7	0
<b>Southern HSCT</b>	<b>59</b>	<b>7</b>	<b>22</b>	<b>386</b>	<b>45</b>	<b>99</b>	<b>5</b>	<b>35</b>	<b>18</b>	<b>0</b>
Altnagelvin Area	157	7	18	339	30	80	20	75	1	0
Erne	211	2	4	1,772	15	7	0	0	0	0
Tyrone County	88	2	1	1,975	3	0	0	0	1	0
<b>Western HSCT</b>	<b>456</b>	<b>11</b>	<b>23</b>	<b>4,086</b>	<b>48</b>	<b>87</b>	<b>20</b>	<b>75</b>	<b>2</b>	<b>0</b>
<b>NI Total</b>	<b>616</b>	<b>25</b>	<b>64</b>	<b>6,409</b>	<b>155</b>	<b>274</b>	<b>56</b>	<b>207</b>	<b>30</b>	<b>0</b>

Source: QOAR (Part 1)

Note: DNA = Did not attend, CNA = Could not attend



**Table 34: Specialty 320 - Activity by Hospital/HSC Trust for Cardiology, 2010/11**

Hospital/HSC Trust	Attendances						Hospital Cancellations		Patient Died	Private Patient Attendances
	Seen	New DNA	CNA	Seen	Review DNA	CNA	New	Review		
Belfast City	2,271	82	219	4,694	422	1,041	111	379	32	0
Mater Infirmorum	1,036	167	76	2,080	414	254	49	140	22	1
RBHSC	995	70	89	2,675	355	218	70	3,599	7	1
Royal Maternity	20	0	0	10	2	0	7	1	0	0
Royal Victoria	3,919	212	261	8,654	1,722	1,135	133	2,216	120	81
<b>Belfast HSCT</b>	<b>8,241</b>	<b>531</b>	<b>645</b>	<b>18,113</b>	<b>2,915</b>	<b>2,648</b>	<b>370</b>	<b>6,335</b>	<b>181</b>	<b>83</b>
Antrim	991	68	145	2,486	272	283	142	201	11	0
Causeway	267	17	27	492	64	56	65	947	8	0
Waveney	203	6	32	376	38	62	11	33	3	0
Whiteabbey	410	13	134	1,216	139	252	18	408	9	0
<b>Northern HSCT</b>	<b>1,871</b>	<b>104</b>	<b>338</b>	<b>4,570</b>	<b>513</b>	<b>653</b>	<b>236</b>	<b>1,589</b>	<b>31</b>	<b>0</b>
Ards	196	5	12	490	109	54	5	297	13	0
Bangor	165	14	13	79	26	8	19	193	3	0
Ulster	2,961	104	190	2,417	455	246	133	1,409	50	0
<b>South Eastern HSCT</b>	<b>3,322</b>	<b>123</b>	<b>215</b>	<b>2,986</b>	<b>590</b>	<b>308</b>	<b>157</b>	<b>1,899</b>	<b>66</b>	<b>0</b>
Armagh Community	126	3	11	85	5	9	5	6	0	0
Banbridge	87	11	9	91	6	10	6	7	1	0
Craigavon Area	2,561	135	269	1,201	64	75	99	68	5	0
Daisy Hill	570	65	82	644	94	80	30	83	2	0
South Tyrone	79	4	1	112	2	5	8	8	0	0
<b>Southern HSCT</b>	<b>3,423</b>	<b>218</b>	<b>372</b>	<b>2,133</b>	<b>171</b>	<b>179</b>	<b>148</b>	<b>172</b>	<b>8</b>	<b>0</b>
Altnagelvin Area	727	50	97	3,292	267	363	71	463	23	0
Roe Valley	127	15	13	176	18	28	17	16	1	0
Erne	286	32	48	1,169	122	194	30	501	4	0
Tyrone County	354	14	35	732	26	77	12	42	1	0
<b>Western HSCT</b>	<b>1,494</b>	<b>111</b>	<b>193</b>	<b>5,369</b>	<b>433</b>	<b>662</b>	<b>130</b>	<b>1,022</b>	<b>29</b>	<b>0</b>
<b>NI Total</b>	<b>18,351</b>	<b>1,087</b>	<b>1,763</b>	<b>33,171</b>	<b>4,622</b>	<b>4,450</b>	<b>1,041</b>	<b>11,017</b>	<b>315</b>	<b>83</b>

Source: QOAR (Part 1)

Note: DNA = Did not attend, CNA = Could not attend

**Table 35: Specialty 330 - Activity by Hospital/HSC Trust for Dermatology, 2010/11**

Hospital/HSC Trust	Attendances						Hospital Cancellations		Patient	Private
	Seen	New DNA	CNA	Seen	Review DNA	CNA	New	Review	Died	Patient Attendances
Belfast City	3,258	257	467	8,220	1,106	1,614	93	710	22	94
Mater Infirmorum	403	59	69	473	102	83	56	39	2	0
RBHSC	902	82	90	1,509	231	326	41	234	0	0
Royal Victoria	3,469	255	385	7,995	1,075	1,227	150	443	17	52
<b>Belfast HSCT</b>	<b>8,032</b>	<b>653</b>	<b>1,011</b>	<b>18,197</b>	<b>2,514</b>	<b>3,250</b>	<b>340</b>	<b>1,426</b>	<b>41</b>	<b>146</b>
Antrim	1,235	81	227	1,702	209	286	38	174	6	1
Causeway	875	55	106	1,388	167	196	35	128	1	48
Mid Ulster	501	22	73	1,025	146	147	8	115	5	0
Moyle	288	15	46	387	30	40	4	35	2	0
Waveney	471	31	58	1,137	130	217	17	129	7	1
Whiteabbey	829	63	118	1,066	91	225	16	62	4	0
<b>Northern HSCT</b>	<b>4,199</b>	<b>267</b>	<b>628</b>	<b>6,705</b>	<b>773</b>	<b>1,111</b>	<b>118</b>	<b>643</b>	<b>25</b>	<b>50</b>
Ards	387	31	41	307	54	67	16	55	2	0
Bangor	462	26	59	1,357	175	214	74	251	5	0
Downe	505	38	50	861	94	80	23	127	3	0
Lagan Valley	720	50	89	878	99	106	303	275	4	0
Ulster	2,192	199	284	2,349	317	390	312	1,157	16	0
<b>South Eastern HSCT</b>	<b>4,266</b>	<b>344</b>	<b>523</b>	<b>5,752</b>	<b>739</b>	<b>857</b>	<b>728</b>	<b>1,865</b>	<b>30</b>	<b>0</b>
Armagh Community	279	28	25	1,009	109	115	3	74	0	0
Craigavon Area	4,230	296	573	5,383	350	453	116	129	5	19
Daisy Hill	1,554	116	214	2,439	227	180	76	204	1	0
South Tyrone	901	68	88	1,510	144	145	6	34	3	0
<b>Southern HSCT</b>	<b>6,964</b>	<b>508</b>	<b>900</b>	<b>10,341</b>	<b>830</b>	<b>893</b>	<b>201</b>	<b>441</b>	<b>9</b>	<b>19</b>

**Table 35: continued**

Hospital/HSC Trust	Attendances						Hospital Cancellations		Patient Died	Private Patient Attendances
	Seen	New DNA	CNA	Seen	Review DNA	CNA	New	Review		
Altnagelvin Area	3,072	225	364	3,124	405	394	136	287	5	0
Roe Valley	361	42	43	174	19	17	16	13	0	0
Erne	1,966	139	164	726	63	135	31	47	2	545
Tyrone County	986	26	107	1,066	114	170	4	42	2	0
<b>Western HSCT</b>	<b>6,385</b>	<b>432</b>	<b>678</b>	<b>5,090</b>	<b>601</b>	<b>716</b>	<b>187</b>	<b>389</b>	<b>9</b>	<b>545</b>
<b>NI Total</b>	<b>29,846</b>	<b>2,204</b>	<b>3,740</b>	<b>46,085</b>	<b>5,457</b>	<b>6,827</b>	<b>1,574</b>	<b>4,764</b>	<b>114</b>	<b>760</b>

Source: QOAR (Part 1)

Note: DNA = Did not attend, CNA = Could not attend

**Table 36: Specialty 340 - Activity by Hospital/HSC Trust for Thoracic Medicine, 2010/11**

Hospital/HSC Trust	Attendances						Hospital Cancellations		Patient	Private
	Seen	<u>New</u> DNA	CNA	Seen	<u>Review</u> DNA	CNA	New	Review	Died	Patient Attendances
Belfast City	1,899	145	303	8,221	1,049	1,508	146	1,071	74	31
Royal Victoria	705	43	85	1,822	324	329	27	149	22	0
<b>Belfast HSCT</b>	<b>2,604</b>	<b>188</b>	<b>388</b>	<b>10,043</b>	<b>1,373</b>	<b>1,837</b>	<b>173</b>	<b>1,220</b>	<b>96</b>	<b>31</b>
Causeway	387	17	26	823	138	106	34	422	16	0
<b>Belfast HSCT</b>	<b>387</b>	<b>17</b>	<b>26</b>	<b>823</b>	<b>138</b>	<b>106</b>	<b>34</b>	<b>422</b>	<b>16</b>	<b>0</b>
Ards	250	24	22	387	96	31	26	216	14	0
Bangor	182	15	15	432	83	51	12	119	16	0
Downe	205	10	11	214	23	15	19	41	4	0
Lagan Valley	322	31	23	605	66	40	13	81	10	0
Ulster	308	18	25	735	181	69	13	196	21	0
<b>South Eastern HSCT</b>	<b>1,267</b>	<b>98</b>	<b>96</b>	<b>2,373</b>	<b>449</b>	<b>206</b>	<b>83</b>	<b>653</b>	<b>65</b>	<b>0</b>
Craigavon Area	845	78	82	1,555	152	167	26	62	10	0
South Tyrone	132	5	25	535	26	46	16	13	5	0
<b>Southern HSCT</b>	<b>977</b>	<b>83</b>	<b>107</b>	<b>2,090</b>	<b>178</b>	<b>213</b>	<b>42</b>	<b>75</b>	<b>15</b>	<b>0</b>
<b>NI Total</b>	<b>5,235</b>	<b>386</b>	<b>617</b>	<b>15,329</b>	<b>2,138</b>	<b>2,362</b>	<b>332</b>	<b>2,370</b>	<b>192</b>	<b>31</b>

Source: QOAR (Part 1)

Note: DNA = Did not attend, CNA = Could not attend

**Table 37: Specialty 360 - Activity by Hospital/HSC Trust for Genito-Urinary Medicine, 2010/11<sup>10</sup>**

Hospital/HSC Trust	Attendances						Hospital Cancellations		Patient	Private
	Seen	<u>New</u> DNA	CNA	Seen	<u>Review</u> DNA	CNA	New	Review	Died	Patient Attendances
Royal Victoria	11,330	0	--	5,885	0	--	--	--	0	0
<b>Belfast HSCT</b>	<b>11,330</b>	<b>0</b>	--	<b>5,885</b>	<b>0</b>	--	--	--	<b>0</b>	<b>0</b>
Causeway	1,683	0	--	287	0	--	--	--	0	0
<b>Northern HSCT</b>	<b>1,683</b>	<b>0</b>	--	<b>287</b>	<b>0</b>	--	--	--	<b>0</b>	<b>0</b>
Daisy Hill	1,608	0	--	232	0	--	--	--	0	0
<b>Southern HSCT</b>	<b>1,608</b>	<b>0</b>	--	<b>232</b>	<b>0</b>	--	--	--	<b>0</b>	<b>0</b>
Altnagelvin Area	3,164	611	--	1,819	576	--	--	--	0	0
<b>Western HSCT</b>	<b>3,164</b>	<b>611</b>	--	<b>1,819</b>	<b>576</b>	--	--	--	<b>0</b>	<b>0</b>
<b>NI Total</b>	<b>17,785</b>	<b>611</b>	--	<b>8,223</b>	<b>576</b>	--	--	--	<b>0</b>	<b>0</b>

Source: QOAR (Part 1)

Note: DNA = Did not attend, CNA = Could not attend

<sup>10</sup> Refer to Explanatory Notes Point 2

**Table 38: Specialty 361 - Activity by Hospital/HSC Trust for Nephrology, 2010/11**

Hospital/HSC Trust	Attendances						Hospital Cancellations		Patient	Private
	Seen	New DNA	CNA	Seen	Review DNA	CNA	New	Review	Died	Patient Attendances
Belfast City	826	77	153	7,436	805	929	190	1,244	39	0
RBHSC	285	17	34	2,034	208	285	5	617	1	0
Royal Victoria	16	0	1	136	21	15	3	8	0	0
<b>Belfast HSCT</b>	<b>1,127</b>	<b>94</b>	<b>188</b>	<b>9,606</b>	<b>1,034</b>	<b>1,229</b>	<b>198</b>	<b>1,869</b>	<b>40</b>	<b>0</b>
Antrim	440	32	75	3,136	417	409	22	341	31	2
<b>Northern HSCT</b>	<b>440</b>	<b>32</b>	<b>75</b>	<b>3,136</b>	<b>417</b>	<b>409</b>	<b>22</b>	<b>341</b>	<b>31</b>	<b>2</b>
Ulster	278	26	37	1,252	127	109	40	283	12	0
<b>South Eastern HSCT</b>	<b>278</b>	<b>26</b>	<b>37</b>	<b>1,252</b>	<b>127</b>	<b>109</b>	<b>40</b>	<b>283</b>	<b>12</b>	<b>0</b>
Daisy Hill	157	13	20	1,159	64	162	11	389	4	0
South Tyrone	15	3	1	142	22	5	4	50	4	0
<b>Southern HSCT</b>	<b>172</b>	<b>16</b>	<b>21</b>	<b>1,301</b>	<b>86</b>	<b>167</b>	<b>15</b>	<b>439</b>	<b>8</b>	<b>0</b>
Altnagelvin Area	140	19	20	1,473	122	156	25	172	14	0
Erne	25	8	3	174	18	35	30	159	1	0
Tyrone County	81	10	16	1,229	121	212	12	577	16	0
<b>Western HSCT</b>	<b>246</b>	<b>37</b>	<b>39</b>	<b>2,876</b>	<b>261</b>	<b>403</b>	<b>67</b>	<b>908</b>	<b>31</b>	<b>0</b>
<b>NI Total</b>	<b>2,263</b>	<b>205</b>	<b>360</b>	<b>18,171</b>	<b>1,925</b>	<b>2,317</b>	<b>342</b>	<b>3,840</b>	<b>122</b>	<b>2</b>

Source: QOAR (Part 1)

Note: DNA = Did not attend, CNA = Could not attend

**Table 39: Specialty 370 - Activity by Hospital/HSC Trust for Medical Oncology, 2010/11**

Hospital/HSC Trust	Attendances						Hospital Cancellations	Patient Died	Private Patient Attendances	
	Seen	<u>New</u> DNA	CNA	Seen	<u>Review</u> DNA	CNA				
Belfast City	0	0	0	9	0	0	0	1	0	0
NI Cancer Centre	932	47	43	11,253	556	787	86	1,350	152	7
RBHSC	13	0	0	1,332	395	43	1	23	1	0
<b>Belfast HSCT</b>	<b>945</b>	<b>47</b>	<b>43</b>	<b>12,594</b>	<b>951</b>	<b>830</b>	<b>87</b>	<b>1,374</b>	<b>153</b>	<b>7</b>
Antrim	0	0	0	1,108	0	0	0	0	0	0
<b>Northern HSCT</b>	<b>0</b>	<b>0</b>	<b>0</b>	<b>1,108</b>	<b>0</b>	<b>0</b>	<b>0</b>	<b>0</b>	<b>0</b>	<b>0</b>
<b>NI Total</b>	<b>945</b>	<b>47</b>	<b>43</b>	<b>13,702</b>	<b>951</b>	<b>830</b>	<b>87</b>	<b>1,374</b>	<b>153</b>	<b>7</b>

Source: QOAR (Part 1)

Note: DNA = Did not attend, CNA = Could not attend

**Table 40: Specialty 400 - Activity by Hospital/HSC Trust for Neurology, 2010/11**

Hospital/HSC Trust	Attendances						Hospital Cancellations		Patient	Private
	Seen	<u>New</u> DNA	CNA	Seen	<u>Review</u> DNA	CNA	New	Review	Died	Patient Attendances
Belfast City	1,509	135	314	5,880	621	1,246	82	622	16	0
Royal Victoria	3,432	314	484	6,530	1,401	1,100	220	2,045	48	0
<b>Belfast HSCT</b>	<b>4,941</b>	<b>449</b>	<b>798</b>	<b>12,410</b>	<b>2,022</b>	<b>2,346</b>	<b>302</b>	<b>2,667</b>	<b>64</b>	<b>0</b>
Antrim	584	28	54	589	68	60	13	13	7	0
Causeway	250	26	34	1,111	172	169	9	297	6	0
Mid Ulster	178	7	26	507	71	121	5	45	3	0
<b>Northern HSCT</b>	<b>1,012</b>	<b>61</b>	<b>114</b>	<b>2,207</b>	<b>311</b>	<b>350</b>	<b>27</b>	<b>355</b>	<b>16</b>	<b>0</b>
Lagan Valley	78	8	7	24	1	1	12	6	0	0
Ulster	839	60	77	833	160	99	44	233	6	0
<b>South Eastern HSCT</b>	<b>917</b>	<b>68</b>	<b>84</b>	<b>857</b>	<b>161</b>	<b>100</b>	<b>56</b>	<b>239</b>	<b>6</b>	<b>0</b>
Banbridge	8	1	2	224	15	31	1	26	1	0
Craigavon Area	1,798	82	148	2,123	135	185	73	153	2	0
Daisy Hill	330	18	27	520	51	59	27	69	2	0
South Tyrone	3	0	0	260	22	29	0	20	0	0
<b>Southern HSCT</b>	<b>2,139</b>	<b>101</b>	<b>177</b>	<b>3,127</b>	<b>223</b>	<b>304</b>	<b>101</b>	<b>268</b>	<b>5</b>	<b>0</b>
Altnagelvin Area	1,096	93	121	2,019	186	237	141	188	7	0
Erne	274	64	45	304	61	44	81	40	0	0
Tyrone County	158	24	19	351	48	65	16	103	0	0
<b>Western HSCT</b>	<b>1,528</b>	<b>181</b>	<b>185</b>	<b>2,674</b>	<b>295</b>	<b>346</b>	<b>238</b>	<b>331</b>	<b>7</b>	<b>0</b>
<b>NI Total</b>	<b>10,537</b>	<b>860</b>	<b>1,358</b>	<b>21,275</b>	<b>3,012</b>	<b>3,446</b>	<b>724</b>	<b>3,860</b>	<b>98</b>	<b>0</b>

Source: QOAR (Part 1)

Note: DNA = Did not attend, CNA = Could not attend



**Table 41: Specialty 401 - Activity by Hospital/HSC Trust for Clinical Neuro-Physiology, 2010/11**

<b>Hospital/HSC Trust</b>	<b>Attendances</b>						<b>Hospital Cancellations</b>		<b>Patient</b>	<b>Private</b>
	<b>Seen</b>	<b><u>New</u></b>	<b>CNA</b>	<b>Seen</b>	<b><u>Review</u></b>	<b>CNA</b>	<b>New</b>	<b>Review</b>	<b>Died</b>	<b>Patient</b>
Royal Victoria	1,791	131	229	10	1	0	174	1	1	1
<b>Belfast HSCT</b>	<b>1,791</b>	<b>131</b>	<b>229</b>	<b>10</b>	<b>1</b>	<b>0</b>	<b>174</b>	<b>1</b>	<b>1</b>	<b>1</b>
<b>NI Total</b>	<b>1,791</b>	<b>131</b>	<b>229</b>	<b>10</b>	<b>1</b>	<b>0</b>	<b>174</b>	<b>1</b>	<b>1</b>	<b>1</b>

Source: QOAR (Part 1)

Note: DNA = Did not attend, CNA = Could not attend

**Table 42: Specialty 410 - Activity by Hospital/HSC Trust for Rheumatology, 2010/11**

Hospital/HSC Trust	Attendances						Hospital Cancellations		Patient Died	Private Patient Attendances
	Seen	New DNA	CNA	Seen	Review DNA	CNA	New	Review		
Belfast City	1,153	91	182	3,879	381	831	120	331	11	0
Musgrave Park	281	50	12	1,022	132	21	20	184	0	0
Royal Victoria	1,363	74	156	4,692	555	905	216	1,690	16	1
<b>Belfast HSCT</b>	<b>2,797</b>	<b>215</b>	<b>350</b>	<b>9,593</b>	<b>1,068</b>	<b>1,757</b>	<b>356</b>	<b>2,205</b>	<b>27</b>	<b>1</b>
Antrim	1,065	41	151	4,111	306	499	98	573	6	4
Causeway	284	17	56	1,948	174	187	35	530	13	0
Moyle	83	3	8	190	15	28	10	44	1	0
Mid Ulster	56	4	9	192	17	18	15	33	1	0
Waveney	191	12	30	1,022	94	178	8	252	2	0
Whiteabbey	71	6	7	448	49	71	0	79	3	0
<b>Northern HSCT</b>	<b>1,750</b>	<b>83</b>	<b>261</b>	<b>7,911</b>	<b>655</b>	<b>981</b>	<b>166</b>	<b>1,511</b>	<b>26</b>	<b>4</b>
Bangor	21	4	0	106	7	12	0	62	0	0
Downe	156	4	11	568	44	50	9	58	1	0
Lagan Valley	288	12	22	817	45	95	7	93	1	0
Ulster	427	42	61	790	82	93	26	643	5	0
<b>South Eastern HSCT</b>	<b>892</b>	<b>62</b>	<b>94</b>	<b>2,281</b>	<b>178</b>	<b>250</b>	<b>42</b>	<b>856</b>	<b>7</b>	<b>0</b>
Armagh Community	65	3	18	114	12	13	7	8	0	0
Banbridge	542	32	82	1,147	87	129	12	78	3	0
Craigavon Area	571	38	57	952	56	92	12	65	0	0
South Tyrone	345	23	35	325	20	33	11	80	1	0
<b>Southern HSCT</b>	<b>1,523</b>	<b>96</b>	<b>192</b>	<b>2,538</b>	<b>175</b>	<b>267</b>	<b>42</b>	<b>231</b>	<b>4</b>	<b>0</b>
Altnagelvin Area	1,007	84	184	2,468	174	413	174	543	4	0
Erne	367	11	30	736	47	75	65	83	1	0
Roe Valley	25	2	1	18	1	1	3	0	0	0
Tyrone County	285	7	32	516	24	66	37	70	0	0
<b>Western HSCT</b>	<b>1,684</b>	<b>104</b>	<b>247</b>	<b>3,738</b>	<b>246</b>	<b>555</b>	<b>279</b>	<b>696</b>	<b>5</b>	<b>0</b>
<b>NI Total</b>	<b>8,646</b>	<b>560</b>	<b>1,144</b>	<b>26,061</b>	<b>2,322</b>	<b>3,810</b>	<b>885</b>	<b>5,499</b>	<b>69</b>	<b>5</b>

Source: QOAR (Part 1)

Note: DNA = Did not attend, CNA = Could not attend

**Table 43: Specialty 420 - Activity by Hospital/HSC Trust for Paediatrics, 2010/11**

Hospital/HSC Trust	Attendances						Hospital Cancellations		Patient	Private
	Seen	New DNA	CNA	Seen	Review DNA	CNA	New	Review	Died	Patient Attendances
Muckamore Abbey	496	154	75	2,095	658	369	0	0	0	0
RBHSC	3,284	264	395	9,125	1,615	1,618	316	2,103	3	0
Royal Maternity	7	7	0	1,060	298	22	0	181	0	0
Royal Victoria	0	0	0	5	0	0	0	0	0	0
<b>Belfast HSCT</b>	<b>3,787</b>	<b>425</b>	<b>470</b>	<b>12,285</b>	<b>2,571</b>	<b>2,009</b>	<b>316</b>	<b>2,284</b>	<b>3</b>	<b>0</b>
Antrim	1,280	145	139	4,291	906	783	103	1,683	4	22
Causeway	757	68	90	3,416	1,041	402	29	441	1	0
Mid Ulster	550	45	63	780	167	194	14	67	0	15
Moyle	145	15	10	537	194	155	3	53	0	1
Waveney	318	14	22	646	131	141	10	235	0	1
Whiteabbey	63	7	8	320	65	46	12	150	0	0
<b>Northern HSCT</b>	<b>3,113</b>	<b>294</b>	<b>332</b>	<b>9,990</b>	<b>2,504</b>	<b>1,721</b>	<b>171</b>	<b>2,629</b>	<b>5</b>	<b>39</b>
Ards	217	19	18	777	82	67	5	24	0	0
Downe	211	5	18	136	17	10	2	12	0	0
Lagan Valley	132	2	13	204	24	26	4	9	0	0
Ulster	2,046	180	172	3,750	1,056	486	146	1,667	2	0
<b>South Eastern HSCT</b>	<b>2,606</b>	<b>206</b>	<b>221</b>	<b>4,867</b>	<b>1,179</b>	<b>589</b>	<b>157</b>	<b>1,712</b>	<b>2</b>	<b>0</b>
Armagh Community	439	52	30	1,455	372	101	15	60	0	0
Banbridge	183	23	13	312	55	34	9	28	0	0
Bluestone	277	33	13	1	0	0	0	0	0	0
Craigavon Area	1,043	93	95	2,456	333	223	86	280	0	0
Daisy Hill	720	76	83	2,517	348	322	60	339	2	0
South Tyrone	329	28	24	861	137	61	19	49	1	0
<b>Southern HSCT</b>	<b>2,991</b>	<b>305</b>	<b>258</b>	<b>7,602</b>	<b>1,245</b>	<b>741</b>	<b>189</b>	<b>756</b>	<b>3</b>	<b>0</b>

**Table 43: continued**

Hospital/HSC Trust	Attendances						Hospital Cancellations		Patient Died	Private Patient Attendances
	Seen	<u>New</u> DNA	CNA	Seen	<u>Review</u> DNA	CNA	New	Review		
Altnagelvin Area	1,604	101	156	5,775	684	620	212	872	0	0
Erne	554	65	75	2,345	319	370	34	525	0	0
Gransha	154	68	66	531	57	93	0	0	0	0
Roe Valley	73	7	14	63	5	12	31	17	0	0
Tyrone County	363	95	2	1,731	736	18	22	893	1	0
<b>Western HSC</b>	<b>2,748</b>	<b>336</b>	<b>313</b>	<b>10,445</b>	<b>1,801</b>	<b>1,113</b>	<b>299</b>	<b>2,307</b>	<b>1</b>	<b>0</b>
<b>NI Total</b>	<b>15,245</b>	<b>1,566</b>	<b>1,594</b>	<b>45,189</b>	<b>9,300</b>	<b>6,173</b>	<b>1,132</b>	<b>9,688</b>	<b>14</b>	<b>39</b>

Source: QOAR (Part 1)

Note: DNA = Did not attend, CNA = Could not attend

**Table 44: Specialty 421 - Activity by Hospital/HSC Trust for Paediatric Neurology, 2010/11**

Hospital/HSC Trust	Attendances						Hospital Cancellations		Patient	Private
	Seen	<u>New</u> DNA	CNA	Seen	<u>Review</u> DNA	CNA	New	Review	Died	Patient Attendances
Belfast City	8	1	2	54	9	10	0	5	1	0
RBHSC	260	17	22	1,160	137	240	27	357	3	0
<b>Belfast HSCT</b>	<b>268</b>	<b>18</b>	<b>24</b>	<b>1,214</b>	<b>146</b>	<b>250</b>	<b>27</b>	<b>362</b>	<b>4</b>	<b>0</b>
Antrim	0	0	0	9	2	1	0	0	0	0
Causeway	8	0	0	9	0	0	0	1	0	0
<b>Northern HSCT</b>	<b>8</b>	<b>0</b>	<b>0</b>	<b>18</b>	<b>2</b>	<b>1</b>	<b>0</b>	<b>1</b>	<b>0</b>	<b>0</b>
Lurgan	1	0	0	72	5	7	0	0	0	0
<b>Southern HSCT</b>	<b>1</b>	<b>0</b>	<b>0</b>	<b>72</b>	<b>5</b>	<b>7</b>	<b>0</b>	<b>0</b>	<b>0</b>	<b>0</b>
Altnagelvin Area	0	0	0	83	6	6	1	30	1	0
<b>Western HSCT</b>	<b>0</b>	<b>0</b>	<b>0</b>	<b>83</b>	<b>6</b>	<b>6</b>	<b>1</b>	<b>30</b>	<b>1</b>	<b>0</b>
<b>NI Total</b>	<b>277</b>	<b>18</b>	<b>24</b>	<b>1,387</b>	<b>159</b>	<b>264</b>	<b>28</b>	<b>393</b>	<b>5</b>	<b>0</b>

Source: QOAR (Part 1)

Note: DNA = Did not attend, CNA = Could not attend

**Table 45: Specialty 430 - Activity by Hospital/HSC Trust for Geriatric Medicine, 2010/11**

Hospital/HSC Trust	Attendances						Hospital Cancellations		Patient	Private
	Seen	New DNA	CNA	Seen	Review DNA	CNA	New	Review	Died	Patient Attendances
Belfast City	2,008	157	439	3,014	436	805	95	295	57	0
Musgrave Park	74	8	14	1,095	330	191	1	5	5	0
Royal Victoria	191	22	36	857	174	94	11	232	23	0
<b>Belfast HSCT</b>	<b>2,273</b>	<b>187</b>	<b>489</b>	<b>4,966</b>	<b>940</b>	<b>1,090</b>	<b>107</b>	<b>532</b>	<b>85</b>	<b>0</b>
Antrim	72	1	7	76	14	12	13	6	0	0
Waveney	102	8	16	189	18	62	10	29	1	0
Whiteabbey	187	11	24	599	120	192	14	197	21	4
<b>Northern HSCT</b>	<b>361</b>	<b>20</b>	<b>47</b>	<b>864</b>	<b>152</b>	<b>266</b>	<b>37</b>	<b>232</b>	<b>22</b>	<b>4</b>
Lagan Valley	436	33	53	856	73	115	22	146	15	0
Ulster	1,912	149	182	2,048	186	296	233	620	49	30
<b>South Eastern HSCT</b>	<b>2,348</b>	<b>182</b>	<b>235</b>	<b>2,904</b>	<b>259</b>	<b>411</b>	<b>255</b>	<b>766</b>	<b>64</b>	<b>30</b>
Craigavon Area	506	28	30	705	112	123	11	65	5	0
Daisy Hill	8	0	0	0	0	0	0	0	0	0
Lurgan	643	99	73	1,423	333	186	25	279	30	0
Mullinure	212	44	21	480	142	77	18	326	15	0
South Tyrone	213	65	15	462	141	19	8	282	5	0
<b>Southern HSCT</b>	<b>1,582</b>	<b>236</b>	<b>139</b>	<b>3,070</b>	<b>728</b>	<b>405</b>	<b>62</b>	<b>952</b>	<b>55</b>	<b>0</b>
Altnagelvin Area	244	55	24	928	239	99	21	301	24	0
Erne	315	50	69	1,031	149	209	50	247	14	0
Roe Valley	18	4	4	180	34	25	2	25	3	0
Tyrone County	174	11	22	350	46	56	11	51	12	0
<b>Western HSCT</b>	<b>751</b>	<b>120</b>	<b>119</b>	<b>2,489</b>	<b>468</b>	<b>389</b>	<b>84</b>	<b>624</b>	<b>53</b>	<b>0</b>
<b>NI Total</b>	<b>7,315</b>	<b>745</b>	<b>1,029</b>	<b>14,293</b>	<b>2,547</b>	<b>2,561</b>	<b>545</b>	<b>3,106</b>	<b>279</b>	<b>34</b>

Source: QOAR (Part 1)

Note: DNA = Did not attend, CNA = Could not attend

**Table 46: Specialty 450 - Activity by Hospital/HSC Trust for Dental Medicine Specialties, 2010/11**

Hospital/HSC Trust	Attendances						Hospital Cancellations		Patient	Private
	Seen	<u>New</u> DNA	CNA	Seen	<u>Review</u> DNA	CNA	New	Review	Died	Patient
Royal Victoria	1,016	73	153	2,476	653	670	93	1,344	5	2
<b>Belfast HSC</b>	<b>1,016</b>	<b>73</b>	<b>153</b>	<b>2,476</b>	<b>653</b>	<b>670</b>	<b>93</b>	<b>1,344</b>	<b>5</b>	<b>2</b>
<b>NI Total</b>	<b>1,016</b>	<b>73</b>	<b>153</b>	<b>2,476</b>	<b>653</b>	<b>670</b>	<b>93</b>	<b>1,344</b>	<b>5</b>	<b>2</b>

Source: QOAR (Part 1)

Note: DNA = Did not attend, CNA = Could not attend

**Table 47: Specialty 502 - Activity by Hospital/HSC Trust for Gynaecology, 2010/11**

Hospital/HSC Trust	Attendances						Hospital Cancellations		Patient	Private
	Seen	New DNA	CNA	Seen	Review DNA	CNA	New	Review	Died	Patient Attendances
Belfast City	2,919	190	532	4,435	552	894	121	320	6	0
Mater Infirmorum	2,848	366	321	3,604	764	434	81	320	1	0
Royal Victoria	5,837	504	975	11,764	1,348	1,969	304	971	3	1,209
<b>Belfast HSCT</b>	<b>11,604</b>	<b>1,060</b>	<b>1,828</b>	<b>19,803</b>	<b>2,664</b>	<b>3,297</b>	<b>506</b>	<b>1,611</b>	<b>10</b>	<b>1,209</b>
Antrim	2,017	190	343	1,979	259	512	249	207	3	19
Carrickfergus	34	4	4	58	6	8	0	16	0	0
Causeway	2,110	183	398	2,560	434	382	209	609	2	1
Mid Ulster	719	48	133	981	204	283	76	215	1	0
Moyle	440	13	70	499	57	106	6	26	2	0
Waveney	898	38	164	1,026	97	243	37	89	0	0
Whiteabbey	984	91	169	964	122	256	75	274	1	9
<b>Northern HSCT</b>	<b>7,202</b>	<b>567</b>	<b>1,281</b>	<b>8,067</b>	<b>1,179</b>	<b>1,790</b>	<b>652</b>	<b>1,436</b>	<b>9</b>	<b>29</b>
Ards	1,026	43	57	793	178	105	35	302	1	0
Bangor	1,252	67	108	776	174	139	21	445	1	1
Downe	667	75	98	614	92	84	65	65	0	0
Lagan Valley	2,781	165	291	2,585	271	362	181	248	0	0
Ulster	4,353	174	240	2,569	542	394	139	512	2	0
<b>South Eastern HSCT</b>	<b>10,079</b>	<b>524</b>	<b>794</b>	<b>7,337</b>	<b>1,257</b>	<b>1,084</b>	<b>441</b>	<b>1,572</b>	<b>4</b>	<b>1</b>
Armagh Community	357	26	39	263	27	30	19	29	0	0
Banbridge	157	8	27	183	11	13	3	2	0	0
Craigavon Area	4,101	251	577	5,843	376	456	104	263	1	1
Daisy Hill	2,412	224	420	3,261	582	787	73	355	3	15
Kilkeel Primary Care Centre	208	23	59	125	14	18	1	16	0	0
South Tyrone	694	57	88	618	58	83	14	53	1	0
<b>Southern HSCT</b>	<b>7,929</b>	<b>589</b>	<b>1,210</b>	<b>10,293</b>	<b>1,068</b>	<b>1,387</b>	<b>214</b>	<b>718</b>	<b>5</b>	<b>16</b>



**Table 47: continued**

Hospital/HSC Trust	Attendances						Hospital Cancellations	Patient Died	Private Patient Attendances	
	Seen	<u>New</u> DNA	CNA	Seen	<u>Review</u> DNA	CNA				
Altnagelvin Area	4,924	285	678	4,583	264	692	291	585	3	3
Erne	2,449	89	164	2,248	182	353	110	218	0	10
Roe Valley	505	46	111	624	60	125	8	50	0	0
Tyrone County	819	66	132	1,055	155	188	67	165	0	10
<b>Western HSCT</b>	<b>8,697</b>	<b>486</b>	<b>1,085</b>	<b>8,510</b>	<b>661</b>	<b>1,358</b>	<b>476</b>	<b>1,018</b>	<b>3</b>	<b>23</b>
<b>NI Total</b>	<b>45,511</b>	<b>3,226</b>	<b>6,198</b>	<b>54,010</b>	<b>6,829</b>	<b>8,916</b>	<b>2,289</b>	<b>6,355</b>	<b>31</b>	<b>1,278</b>

Source: QOAR (Part 1)

Note: DNA = Did not attend, CNA = Could not attend

**Table 48: Specialty 510 - Activity by Hospital/HSC Trust for Obstetrics (Ante Natal), 2010/11**

Hospital/HSC Trust	Attendances						Hospital Cancellations		Patient	Private
	Seen	New DNA	CNA	Seen	Review DNA	CNA	New	Review	Died	Patient Attendances
Mater Infirmorum	925	14	13	4,422	527	55	26	138	0	0
Royal Maternity	4,947	315	422	15,551	1,419	718	216	1,334	0	0
<b>Belfast HSCT</b>	<b>5,872</b>	<b>329</b>	<b>435</b>	<b>19,973</b>	<b>1,946</b>	<b>773</b>	<b>242</b>	<b>1,472</b>	<b>0</b>	<b>0</b>
Antrim	1,381	28	121	2,705	72	130	119	302	0	1
Causeway	1,539	48	151	7,709	232	186	332	805	0	2
Mid Ulster	781	22	97	2,857	163	169	44	509	0	1
Moyle	352	25	57	922	51	35	52	158	0	1
Waveney	801	34	124	2,048	107	124	119	307	0	0
Whiteabbey	186	13	28	445	36	25	43	61	0	5
<b>Northern HSCT</b>	<b>5,040</b>	<b>170</b>	<b>578</b>	<b>16,686</b>	<b>661</b>	<b>669</b>	<b>709</b>	<b>2,142</b>	<b>0</b>	<b>10</b>
Downe	32	0	1	736	52	28	2	55	0	0
Lagan Valley	1,412	42	156	1,995	150	85	142	150	0	0
Ulster	3,536	186	221	8,013	284	447	135	1,259	0	3
<b>South Eastern HSCT</b>	<b>4,980</b>	<b>228</b>	<b>378</b>	<b>10,744</b>	<b>486</b>	<b>560</b>	<b>279</b>	<b>1,464</b>	<b>0</b>	<b>3</b>
Armagh Community	425	17	63	1,241	124	69	70	296	0	0
Banbridge	34	0	16	71	13	10	14	38	0	0
Craigavon Area	2,179	45	131	6,926	161	475	43	441	0	0
Daisy Hill	1,294	43	183	5,677	89	558	45	562	0	0
Kilkeel Primary Care Centre	14	0	0	24	1	2	2	4	0	0
South Tyrone	1,013	42	131	2,412	77	179	72	264	0	0
<b>Southern HSCT</b>	<b>4,959</b>	<b>147</b>	<b>524</b>	<b>16,351</b>	<b>465</b>	<b>1,293</b>	<b>246</b>	<b>1,605</b>	<b>0</b>	<b>0</b>

**Table 48: continued**

Hospital/HSC Trust	Attendances						Hospital Cancellations		Patient Died	Private Patient Attendances
	Seen	<u>New</u> DNA	CNA	Seen	<u>Review</u> DNA	CNA	New	Review		
Altnagelvin Area	2,514	83	202	6,315	338	378	133	743	3	3
Erne	961	33	55	3,447	164	94	162	790	0	4
Roe Valley	353	17	12	719	94	28	9	26	0	0
Tyrone County	475	26	24	1,098	244	25	24	89	0	0
<b>Western HSCT</b>	<b>4,303</b>	<b>159</b>	<b>293</b>	<b>11,579</b>	<b>840</b>	<b>525</b>	<b>328</b>	<b>1,648</b>	<b>3</b>	<b>7</b>
<b>NI Total</b>	<b>25,154</b>	<b>1,033</b>	<b>2,208</b>	<b>75,333</b>	<b>4,398</b>	<b>3,820</b>	<b>1,804</b>	<b>8,331</b>	<b>3</b>	<b>20</b>

Source: QOAR (Part 1)

Note: DNA = Did not attend, CNA = Could not attend

**Table 49: Specialty 520 - Activity by Hospital/HSC Trust for Obstetrics (Post Natal), 2010/11**

Hospital/HSC Trust	Attendances						Hospital Cancellations		Patient	Private
	Seen	New		Seen	Review		New	Review	Died	Patient Attendances
		DNA	CNA		DNA	CNA				
Antrim	29	14	9	122	27	31	7	51	0	0
Waveney	2	1	0	9	2	1	0	1	0	0
<b>Northern HSCT</b>	<b>31</b>	<b>15</b>	<b>9</b>	<b>131</b>	<b>29</b>	<b>32</b>	<b>7</b>	<b>52</b>	<b>0</b>	<b>0</b>
Daisy Hill	9	0	2	194	48	34	0	29	0	0
<b>Southern HSCT</b>	<b>9</b>	<b>0</b>	<b>2</b>	<b>194</b>	<b>48</b>	<b>34</b>	<b>0</b>	<b>29</b>	<b>0</b>	<b>0</b>
<b>NI Total</b>	<b>40</b>	<b>15</b>	<b>11</b>	<b>325</b>	<b>77</b>	<b>66</b>	<b>7</b>	<b>81</b>	<b>0</b>	<b>0</b>

Source: QOAR (Part 1)

Note: DNA = Did not attend, CNA = Could not attend

**Table 50: Specialty 700 - Activity by Hospital/HSC Trust for Learning Disability, 2010/11**

Hospital/HSC Trust	Attendances						Hospital Cancellations		Patient	Private
	Seen	<u>New</u> DNA	CNA	Seen	<u>Review</u> DNA	CNA	New	Review	Died	Patient Attendances
Muckamore Abbey	268	59	54	3,160	429	506	7	155	12	0
<b>Belfast HSC Trust</b>	<b>268</b>	<b>59</b>	<b>54</b>	<b>3,160</b>	<b>429</b>	<b>506</b>	<b>7</b>	<b>155</b>	<b>12</b>	<b>0</b>
Longstone	121	45	0	1,250	253	1	5	22	0	0
<b>Southern HSC Trust</b>	<b>121</b>	<b>45</b>	<b>0</b>	<b>1,250</b>	<b>253</b>	<b>1</b>	<b>5</b>	<b>22</b>	<b>0</b>	<b>0</b>
Lakeview	59	10	5	1,257	65	79	0	0	0	0
<b>Western HSC Trust</b>	<b>59</b>	<b>10</b>	<b>5</b>	<b>1,257</b>	<b>65</b>	<b>79</b>	<b>0</b>	<b>0</b>	<b>0</b>	<b>0</b>
<b>NI Total</b>	<b>448</b>	<b>114</b>	<b>59</b>	<b>5,667</b>	<b>747</b>	<b>586</b>	<b>12</b>	<b>177</b>	<b>12</b>	<b>0</b>

Source: QOAR (Part 1)

Note: DNA = Did not attend, CNA = Could not attend

**Table 51: Specialty 710 - Activity by Hospital/HSC Trust for Mental Illness, 2010/11<sup>11</sup>**

Hospital/HSC Trust	Attendances						Hospital Cancellations		Patient	Private
	New			Review			New	Review	Died	Patient
	Seen	DNA	CNA	Seen	DNA	CNA				
Alexandra Gardens	76	124	1	454	153	15	6	125	2	0
Mater Infirmorum	753	378	119	4,586	2,070	331	258	2,566	17	0
<b>Belfast HSCT</b>	<b>829</b>	<b>502</b>	<b>120</b>	<b>5,040</b>	<b>2,223</b>	<b>346</b>	<b>264</b>	<b>2,691</b>	<b>19</b>	<b>0</b>
<b>NI Total</b>	<b>829</b>	<b>502</b>	<b>120</b>	<b>5,040</b>	<b>2,223</b>	<b>346</b>	<b>264</b>	<b>2,691</b>	<b>19</b>	<b>0</b>

Source: QOAR (Part 1)

Note: DNA = Did not attend, CNA = Could not attend

<sup>11</sup> Refer to Explanatory Notes Point 4

**Table 52: Specialty 711 - Activity by Hospital/HSC Trust for Child & Adolescent Psychiatry, 2010/11<sup>11</sup>**

Hospital/HSC Trust	Attendances						Hospital Cancellations		Patient	Private
	Seen	<u>New</u> DNA	CNA	Seen	<u>Review</u> DNA	CNA	New	Review	Died	Patient Attendances
Beechcroft	566	71	50	6,355	989	1,216	4	237	0	0
<b>Belfast HSCT</b>	<b>566</b>	<b>71</b>	<b>50</b>	<b>6,355</b>	<b>989</b>	<b>1,216</b>	<b>4</b>	<b>237</b>	<b>0</b>	<b>0</b>
<b>NI Total</b>	<b>566</b>	<b>71</b>	<b>50</b>	<b>6,355</b>	<b>989</b>	<b>1,216</b>	<b>4</b>	<b>237</b>	<b>0</b>	<b>0</b>

Source: QOAR (Part 1)

Note: DNA = Did not attend, CNA = Could not attend

<sup>11</sup> Refer to Explanatory Notes Point 4

**Table 53: Specialty 713 - Activity by Hospital/HSC Trust for Psychotherapy, 2010/11<sup>11</sup>**

Hospital/HSC Trust	Attendances						Hospital Cancellations	Patient Died	Private Patient Attendances	
	Seen	<u>New</u> DNA	CNA	Seen	<u>Review</u> DNA	CNA				
Windsor House	4	0	1	47	4	7	0	13	0	0
<b>Belfast HSCT</b>	<b>4</b>	<b>0</b>	<b>1</b>	<b>47</b>	<b>4</b>	<b>7</b>	<b>0</b>	<b>13</b>	<b>0</b>	<b>0</b>
<b>NI Total</b>	<b>4</b>	<b>0</b>	<b>1</b>	<b>47</b>	<b>4</b>	<b>7</b>	<b>0</b>	<b>13</b>	<b>0</b>	<b>0</b>

Source: QOAR (Part 1)

Note: DNA = Did not attend, CNA = Could not attend

<sup>11</sup> Refer to Explanatory Notes Point 4



**Table 54: Specialty 715 - Activity by Hospital/HSC Trust for Old Age Psychiatry, 2010/11<sup>11</sup>**

Hospital/HSC Trust	Attendances						Hospital Cancellations		Patient	Private
	Seen	New DNA	CNA	Seen	Review DNA	CNA	New	Review	Died	Patient Attendances
Alexandra Gardens	180	38	29	487	219	106	27	251	15	0
Mater Infirmorum	397	75	61	1,052	406	161	67	879	52	0
Windsor House	230	38	25	421	29	26	13	6	1	0
<b>Belfast HSCT</b>	<b>807</b>	<b>151</b>	<b>115</b>	<b>1,960</b>	<b>654</b>	<b>293</b>	<b>107</b>	<b>1,136</b>	<b>68</b>	<b>0</b>
Ards	485	104	143	1,785	247	447	167	1,147	53	0
<b>South Eastern HSCT</b>	<b>485</b>	<b>104</b>	<b>143</b>	<b>1,785</b>	<b>247</b>	<b>447</b>	<b>167</b>	<b>1,147</b>	<b>53</b>	<b>0</b>
Bluestone	275	41	38	1,853	378	298	38	1,082	55	0
St Luke's	95	53	5	642	271	3	90	245	17	0
<b>Southern HSCT</b>	<b>370</b>	<b>94</b>	<b>43</b>	<b>2,495</b>	<b>649</b>	<b>301</b>	<b>128</b>	<b>1,327</b>	<b>72</b>	<b>0</b>
<b>NI Total</b>	<b>1,662</b>	<b>349</b>	<b>301</b>	<b>6,240</b>	<b>1,550</b>	<b>1,041</b>	<b>402</b>	<b>3,610</b>	<b>193</b>	<b>0</b>

Source: QOAR (Part 1)

Note: DNA = Did not attend, CNA = Could not attend

<sup>11</sup> Refer to Explanatory Notes Point 4

**Table 55: Specialty 800 - Activity by Hospital/HSC Trust for Clinical Oncology, 2010/11**

Hospital/HSC Trust	Attendances						Hospital Cancellations		Patient	Private
	Seen	<u>New</u> DNA	CNA	Seen	<u>Review</u> DNA	CNA	New	Review	Died	Patient Attendances
Belfast City	0	0	0	32	0	0	0	0	0	0
NI Cancer Centre	3,321	174	223	34,569	2,227	2,727	355	5,050	552	240
<b>Belfast HSCT</b>	<b>3,321</b>	<b>174</b>	<b>223</b>	<b>34,601</b>	<b>2,227</b>	<b>2,727</b>	<b>355</b>	<b>5,050</b>	<b>552</b>	<b>240</b>
Antrim	0	0	0	2,413	0	0	0	0	0	0
<b>Northern HSCT</b>	<b>0</b>	<b>0</b>	<b>0</b>	<b>2,413</b>	<b>0</b>	<b>0</b>	<b>0</b>	<b>0</b>	<b>0</b>	<b>0</b>
<b>NI Total</b>	<b>3,321</b>	<b>174</b>	<b>223</b>	<b>37,014</b>	<b>2,227</b>	<b>2,727</b>	<b>355</b>	<b>5,050</b>	<b>552</b>	<b>240</b>

Source: QOAR (Part 1)

Note: DNA = Did not attend, CNA = Could not attend

**Table 56: Specialty 822 - Activity by Hospital/HSC Trust for Chemical Pathology, 2010/11**

Hospital/HSC Trust	Attendances						Hospital Cancellations		Patient	Private
	Seen	<u>New</u> DNA	CNA	Seen	<u>Review</u> DNA	CNA	New	Review	Died	Patient Attendances
Antrim	126	20	28	338	102	98	12	42	0	0
Causeway	284	52	53	1,342	225	382	19	400	15	0
<b>Northern HSCT</b>	<b>410</b>	<b>72</b>	<b>81</b>	<b>1,680</b>	<b>327</b>	<b>480</b>	<b>31</b>	<b>442</b>	<b>15</b>	<b>0</b>
Banbridge	80	4	9	156	24	45	0	0	0	1
Craigavon Area	44	6	8	91	16	32	0	10	0	1
<b>Southern HSCT</b>	<b>124</b>	<b>10</b>	<b>17</b>	<b>247</b>	<b>40</b>	<b>77</b>	<b>0</b>	<b>10</b>	<b>0</b>	<b>2</b>
Altnagelvin Area	93	5	14	245	42	78	15	40	1	0
Tyrone County	58	11	10	193	93	30	2	34	0	0
<b>Western HSCT</b>	<b>151</b>	<b>16</b>	<b>24</b>	<b>438</b>	<b>135</b>	<b>108</b>	<b>17</b>	<b>74</b>	<b>1</b>	<b>0</b>
<b>NI Total</b>	<b>685</b>	<b>98</b>	<b>122</b>	<b>2,365</b>	<b>502</b>	<b>665</b>	<b>48</b>	<b>526</b>	<b>16</b>	<b>2</b>

Source: QOAR (Part 1)

Note: DNA = Did not attend, CNA = Could not attend

**Table 57: Specialty 823 - Activity by Hospital/HSC Trust for Haematology, 2010/11**

Hospital/HSC Trust	Attendances						Hospital Cancellations		Patient	Private
	Seen	<u>New</u> DNA	CNA	Seen	<u>Review</u> DNA	CNA	New	Review	Died	Patient Attendances
RBHSC	33	4	0	1,889	443	36	0	48	1	0
Mater Infirmorum	38	4	0	3,753	479	105	1	129	4	0
<b>Belfast HSCT</b>	<b>71</b>	<b>8</b>	<b>0</b>	<b>5,642</b>	<b>922</b>	<b>141</b>	<b>1</b>	<b>177</b>	<b>5</b>	<b>0</b>
Causeway	57	7	10	620	47	45	3	73	4	0
<b>Northern HSCT</b>	<b>57</b>	<b>7</b>	<b>10</b>	<b>620</b>	<b>47</b>	<b>45</b>	<b>3</b>	<b>73</b>	<b>4</b>	<b>0</b>
<b>NI Total</b>	<b>128</b>	<b>15</b>	<b>10</b>	<b>6,262</b>	<b>969</b>	<b>186</b>	<b>4</b>	<b>250</b>	<b>9</b>	<b>0</b>

Source: QOAR (Part 1)

Note: DNA = Did not attend, CNA = Could not attend

**Table 58: Specialty 990 - Activity by Hospital/HSC Trust for Joint Consultant Clinics, 2010/11**

Hospital/HSC Trust	Attendances						Hospital Cancellations		Patient	Private
	Seen	<u>New</u> DNA	CNA	Seen	<u>Review</u> DNA	CNA	New	Review	Died	Patient Attendances
Royal Maternity	852	54	54	3,782	352	199	42	241	1	0
<b>Belfast HSCT</b>	<b>852</b>	<b>54</b>	<b>54</b>	<b>3,782</b>	<b>352</b>	<b>199</b>	<b>42</b>	<b>241</b>	<b>1</b>	<b>0</b>
Antrim	163	11	24	1,002	31	68	15	46	0	0
<b>Northern HSCT</b>	<b>163</b>	<b>11</b>	<b>24</b>	<b>1,002</b>	<b>31</b>	<b>68</b>	<b>15</b>	<b>46</b>	<b>0</b>	<b>0</b>
<b>NI Total</b>	<b>1,015</b>	<b>65</b>	<b>78</b>	<b>4,784</b>	<b>383</b>	<b>267</b>	<b>57</b>	<b>287</b>	<b>1</b>	<b>0</b>

Source: QOAR (Part 1)

Note: DNA = Did not attend, CNA = Could not attend

**Table 59 : ICATS Activity by Specialty/HSC Trust, 2010/11<sup>12</sup>**

Specialty/HSC Trust	Attendances						Hospital Cancellations		Patient	Private
	Seen	New DNA	CNA	Seen	Review DNA	CNA	New	Review	Died	Patient Attendances
T & O Surgery	4,352	394	479	9,221	1183	999	267	685	0	0
Ophthalmology	229	18	51	0	0	0	24	0	0	0
Dermatology	589	65	82	850	235	256	60	175	0	0
<b>Belfast HSCT</b>	<b>5,170</b>	<b>477</b>	<b>612</b>	<b>10,071</b>	<b>1,418</b>	<b>1,255</b>	<b>351</b>	<b>860</b>	<b>0</b>	<b>0</b>
T & O Surgery	6,397	429	978	5,966	431	928	655	711	0	0
ENT	2,090	109	391	1,091	185	279	190	351	0	0
Ophthalmology	2,327	117	181	2,224	162	227	76	475	0	0
Dermatology	1,208	89	189	1,906	328	400	105	472	0	0
<b>Northern HSCT</b>	<b>12,022</b>	<b>744</b>	<b>1,739</b>	<b>11,187</b>	<b>1,106</b>	<b>1,834</b>	<b>1,026</b>	<b>2,009</b>	<b>0</b>	<b>0</b>
T & O Surgery	5,219	364	388	5,616	514	332	394	250	0	0
ENT	1,488	124	135	155	23	37	41	5	0	0
Ophthalmology	1,111	47	121	712	42	101	92	51	0	0
Dermatology	1,423	98	146	1,394	295	239	78	195	0	0
<b>South Eastern HSCT</b>	<b>9,241</b>	<b>633</b>	<b>790</b>	<b>7,877</b>	<b>874</b>	<b>709</b>	<b>605</b>	<b>501</b>	<b>0</b>	<b>0</b>
Urology	1,269	79	154	1,597	117	132	49	117	0	0
T & O Surgery	4,109	258	565	1,581	171	269	126	91	0	0
Cardiology	6	0	1	0	0	0	0	0	0	0
Dermatology	235	13	27	358	34	72	19	58	0	0
<b>Southern HSCT</b>	<b>5,619</b>	<b>350</b>	<b>747</b>	<b>3,536</b>	<b>322</b>	<b>473</b>	<b>194</b>	<b>266</b>	<b>0</b>	<b>0</b>

**Table 59: continued**

Specialty/HSC Trust	Attendances						Hospital Cancellations		Patient Died	Private Patient Attendances
	Seen	New DNA	CNA	Seen	Review DNA	CNA	New	Review		
Urology	2	0	0	261	20	27	0	7	0	0
T & O Surgery	5,752	541	673	7,845	1,366	555	352	402	0	0
ENT	1,633	106	133	1,653	132	183	81	115	0	0
Ophthalmology	597	34	101	1,220	50	183	38	73	0	0
Cardiology	0	0	0	1,746	186	152	2	147	0	0
<b>Western HSCT</b>	<b>7,984</b>	<b>681</b>	<b>907</b>	<b>12,725</b>	<b>1,754</b>	<b>1,100</b>	<b>473</b>	<b>744</b>	<b>0</b>	<b>0</b>
<b>NI Total</b>	<b>40,036</b>	<b>2,885</b>	<b>4,795</b>	<b>45,396</b>	<b>5,474</b>	<b>5,371</b>	<b>2,649</b>	<b>4,380</b>	<b>0</b>	<b>0</b>

Source: QIAR

Note: DNA = Did not attend, CNA = Could not attend

<sup>12</sup> Refer to Explanatory Notes Points 5-7

**Table 60: ICATS Activity by Specialty, 2010/11<sup>12</sup>**

Specialty	Attendances						Hospital Cancellations		Patient Died	Private Patient Attendances
	Seen	New DNA	CNA	Seen	Review DNA	CNA	New	Review		
Urology	1,271	79	154	1,858	137	159	49	124	0	0
T & O Surgery	25,829	1,986	3,083	30,229	3,665	3,083	1,794	2,139	0	0
ENT	5,211	339	659	2,899	340	499	312	471	0	0
Ophthalmology	4,264	216	454	4,156	254	511	230	599	0	0
Cardiology	6	0	1	1,746	186	152	2	147	0	0
Dermatology	3,455	265	444	4,508	892	967	262	900	0	0
<b>NI Total</b>	<b>40,036</b>	<b>2,885</b>	<b>4,795</b>	<b>45,396</b>	<b>5,474</b>	<b>5,371</b>	<b>2,649</b>	<b>4,380</b>	<b>0</b>	<b>0</b>

Source: QIAR

Note: DNA = Did not attend, CNA = Could not attend

<sup>12</sup> Refer to Explanatory Notes Points 5-7



## Appendix 1: Specialties of consultant led outpatient services provided in each hospital during 2010/11

Hospital	Specialties
Alexandra Gardens	Mental Illness, Old Age Psychiatry
Altnagelvin Area	General Surgery, Urology, Trauma & Orthopaedics, Ear, Nose & Throat, Ophthalmology, Oral Surgery, Orthodontics, Thoracic Surgery, Pain Management, General Medicine, Haematology (Clinical), Palliative Medicine, Cardiology, Dermatology, Genito-Urinary Medicine, Nephrology, Neurology, Rheumatology, Paediatrics, Paediatric Neurology, Geriatric Medicine, Gynaecology, Obstetrics (Ante Natal), Chemical Pathology
Antrim	General Surgery, Ear, Nose & Throat, Oral Surgery, Accident & Emergency, Pain Management, General Medicine, Gastroenterology, Haematology (Clinical), Palliative Medicine, Cardiology, Dermatology, Nephrology, Medical Oncology, Neurology, Rheumatology, Paediatrics, Paediatric Neurology, Geriatric Medicine, Gynaecology, Obstetrics (Ante Natal), Obstetrics (Post Natal), Clinical Oncology, Chemical Pathology, Joint Consultant Clinics
Ards	General Surgery, Urology, Ear, Nose & Throat, Ophthalmology, Plastic Surgery, Accident & Emergency, General Medicine, Haematology (Clinical), Cardiology, Dermatology, Thoracic Medicine, Paediatrics, Gynaecology, Old Age Psychiatry
Armagh Community	General Surgery, Urology, Trauma & Orthopaedics, Ear, Nose & Throat, Ophthalmology, General Medicine, Gastroenterology, Cardiology, Dermatology, Rheumatology, Paediatrics, Gynaecology, Obstetrics (Ante Natal)
Banbridge	General Surgery, Urology, Ear, Nose & Throat, Pain Management, Endocrinology, Cardiology, Neurology, Rheumatology, Paediatrics, Gynaecology, Obstetrics (Ante Natal), Chemical Pathology
Bangor	General Surgery, Urology, Ear, Nose & Throat, Ophthalmology, Accident & Emergency, General Medicine, Haematology (Clinical), Cardiology, Dermatology, Thoracic Medicine, Rheumatology, Gynaecology
Beechcroft	Child & Adolescent Psychiatry
Belfast City	General Surgery, Urology, Ear, Nose & Throat, Ophthalmology, Oral Surgery, Thoracic Surgery, Pain Management, General Medicine, Gastroenterology, Endocrinology, Haematology (Clinical), Clinical Genetics, Palliative Medicine, Cardiology, Dermatology, Thoracic Medicine, Nephrology, Medical Oncology, Neurology, Rheumatology, Paediatric Neurology, Geriatric Medicine, Gynaecology, Clinical Oncology
Bluestone	Paediatrics, Old Age Psychiatry

## Appendix 1 (Continued)

Carrickfergus	General Medicine, Gynaecology
Causeway	General Surgery, Urology, Ear, Nose & Throat, Orthodontics, Anaesthetics, Pain Management, General Medicine, Gastroenterology, Endocrinology, Palliative Medicine, Cardiology, Dermatology, Thoracic Medicine, Genito-Urinary Medicine, Neurology, Rheumatology, Paediatrics, Paediatric Neurology, Gynaecology, Obstetrics (Ante Natal), Chemical Pathology
Craigavon Area	General Surgery, Urology, Trauma & Orthopaedics, Ear, Nose & Throat, Ophthalmology, Oral Surgery, Restorative Dentistry, Paediatric Dentistry, Orthodontics, Thoracic Surgery, Pain Management, General Medicine, Gastroenterology, Endocrinology, Haematology (Clinical), Palliative Medicine, Cardiology, Dermatology, Thoracic Medicine, Neurology, Rheumatology, Paediatrics, Geriatric Medicine, Gynaecology, Obstetrics (Ante Natal), Chemical Pathology
Daisy Hill	General Surgery, Trauma & Orthopaedics, Ear, Nose & Throat, Ophthalmology, Oral Surgery, Thoracic Surgery, Accident & Emergency, Pain Management, General Medicine, Gastroenterology, Endocrinology, Haematology (Clinical), Cardiology, Dermatology, Genito-Urinary Medicine, Nephrology, Neurology, Paediatrics, Geriatric Medicine, Gynaecology, Obstetrics (Ante Natal), Obstetrics (Post Natal)
Downe	General Surgery, Urology, Trauma & Orthopaedics, Ear, Nose & Throat, Ophthalmology, Oral Surgery, Accident & Emergency, General Medicine, Gastroenterology, Dermatology, Thoracic Medicine, Rheumatology, Paediatrics, Gynaecology, Obstetrics (Ante Natal)
Erne	General Surgery, Trauma & Orthopaedics, Ear, Nose & Throat, Ophthalmology, Oral Surgery, Orthodontics, Pain Management, General Medicine, Haematology (Clinical), Palliative Medicine, Cardiology, Dermatology, Nephrology, Neurology, Rheumatology, Paediatrics, Geriatric Medicine, Gynaecology, Obstetrics (Ante Natal)
Gransha	Paediatrics
Kilkeel Primary Care Centre	General Surgery, General Medicine, Endocrinology, Gynaecology, Obstetrics (Ante Natal)
Lagan Valley	General Surgery, Urology, Trauma & Orthopaedics, Ear, Nose & Throat, Ophthalmology, Accident & Emergency, General Medicine, Endocrinology, Dermatology, Thoracic Medicine, Neurology, Rheumatology, Paediatrics, Geriatric Medicine, Gynaecology, Obstetrics (Ante Natal)
Lakeview	Learning Disability
Longstone	Learning Disability

## Appendix 1 (Continued)

Lurgan	Paediatrics, Neurology, Geriatric Medicine
Mater	General Surgery, Urology, Trauma & Orthopaedics, Ear, Nose & Throat, Ophthalmology, Pain Management, General Medicine, Cardiology, Dermatology, Gynaecology, Obstetrics (Ante Natal), Mental Illness, Old Age Psychiatry, Haematology (Clinical)
Mid-Ulster	General Surgery, Ear, Nose & Throat, Oral Surgery, Orthodontics, Pain Management, General Medicine, Gastroenterology, Haematology (Clinical), Palliative Medicine, Dermatology, Neurology, Rheumatology, Paediatrics, Gynaecology, Obstetrics (Ante Natal)
Moyle	General Surgery, Ear, Nose & Throat, General Medicine, Palliative Medicine, Dermatology, Rheumatology, Paediatrics, Gynaecology, Obstetrics (Ante Natal)
Muckamore Abbey	Paediatrics, Learning Disability
Mullinure	Geriatric Medicine
Musgrave Park	Trauma & Orthopaedics, Pain Management, Rehabilitation, Rheumatology, Geriatric Medicine
NI Cancer Centre	Haematology (Clinical), Palliative Medicine, Medical Oncology, Clinical Oncology
Roe Valley (Outpatients)	General Surgery, Urology, Trauma & Orthopaedics, Ear, Nose & Throat, Ophthalmology, General Medicine, Cardiology, Dermatology, Rheumatology, Paediatrics, Geriatric Medicine, Gynaecology, Obstetrics (Ante Natal)
RBHSC	Trauma & Orthopaedics, Ear, Nose & Throat, Paediatric Dentistry, Neurosurgery, Plastic Surgery, Paediatric Surgery, Cardiology, Dermatology, Nephrology, Medical Oncology, Paediatrics, Paediatric Neurology, Haematology (Clinical)
Royal Maternity	Cardiology, Paediatrics, Obstetrics (Ante Natal), Joint Consultant Clinics
Royal Victoria	General Surgery, Urology, Trauma & Orthopaedics, Ear, Nose & Throat, Ophthalmology, Oral Surgery, Restorative Dentistry, Orthodontics, Neurosurgery, Plastic Surgery, Cardiac Surgery, Thoracic Surgery, Anaesthetics, General Medicine, Gastroenterology, Endocrinology, Haematology (Clinical), Audiological Medicine, Clinical Genetics, Rehabilitation, Cardiology, Dermatology, Thoracic Medicine, Genito-Urinary Medicine, Nephrology, Neurology, Clinical Neuro-Physiology, Rheumatology, Paediatrics, Geriatric Medicine, Dental Medicine Specialties, Gynaecology

## Appendix 1 (Continued)

South Tyrone	General Surgery, Urology, Trauma & Orthopaedics, Ear, Nose & Throat, Ophthalmology, Pain Management, General Medicine, Gastroenterology, Endocrinology, Haematology (Clinical), Palliative Medicine, Cardiology, Dermatology, Thoracic Medicine, Nephrology, Neurology, Rheumatology, Paediatrics, Geriatric Medicine, Gynaecology, Obstetrics (Ante Natal)
St Luke's	Old Age Psychiatry
Tyrone County	General Surgery, Urology, Trauma & Orthopaedics, Ear, Nose & Throat, Ophthalmology, Pain Management, General Medicine, Haematology (Clinical), Palliative Medicine, Cardiology, Dermatology, Nephrology, Neurology, Rheumatology, Paediatrics, Geriatric Medicine, Gynaecology, Obstetrics (Ante Natal), Chemical Pathology
Ulster	General Surgery, Urology, Trauma & Orthopaedics, Ear, Nose & Throat, Ophthalmology, Oral Surgery, Restorative Dentistry, Paediatric Dentistry, Plastic Surgery, Paediatric Surgery, Accident & Emergency, Pain Management, General Medicine, Haematology (Clinical), Palliative Medicine, Cardiology, Dermatology, Thoracic Medicine, Nephrology, Neurology, Rheumatology, Paediatrics, Geriatric Medicine, Gynaecology, Obstetrics (Ante Natal)
Waveney	General Surgery, Ear, Nose & Throat, Orthodontics, Pain Management, General Medicine, Palliative Medicine, Cardiology, Dermatology, Rheumatology, Paediatrics, Geriatric Medicine, Gynaecology, Obstetrics (Ante Natal), Obstetrics (Post Natal)
Whiteabbey	General Surgery, Ear, Nose & Throat, Accident & Emergency, Pain Management, General Medicine, Gastroenterology, Haematology (Clinical), Palliative Medicine, Cardiology, Dermatology, Rheumatology, Paediatrics, Geriatric Medicine, Gynaecology, Obstetrics (Ante Natal)
Windsor House	Psychotherapy, Old Age Psychiatry

## Appendix 2: Specialties of Integrated Clinical Assessment and Treatment Services (ICATS) provided in each HSC Trust during 2010/11

<b>HSC Trust</b>	<b>Specialties</b>
Belfast HSC Trust	Trauma & Orthopaedics, Ophthalmology, Dermatology
Northern HSC Trust	Trauma & Orthopaedics, Ear, Nose & Throat, Ophthalmology, Dermatology
South Eastern HSC Trust	Trauma & Orthopaedics, Ear, Nose & Throat, Ophthalmology, Dermatology
Southern HSC Trust	Urology, Trauma & Orthopaedics, Cardiology, Dermatology
Western HSC Trust	Urology, Trauma & Orthopaedics, Ear, Nose & Throat, Ophthalmology, Cardiology

**Appendix 3: Hospitals open within each HSC Trust that provided consultant led outpatient services for all, or part, of the Year Ending 31 March 2011**

Health and Social Care Trust	Hospital
<b>Belfast Health and Social Care Trust</b>	Alexandra Gardens, Beechcroft, Belfast City, Mater Infirmorum, Muckamore Abbey, Musgrave Park, NI Cancer Centre, RBHSC, Royal Maternity, Royal Victoria, Windsor House
<b>Northern Health and Social Care Trust</b>	Antrim, Braid Valley, Carrickfergus, Causeway, Mid Ulster, Moyle, Waveney, Whiteabbey
<b>South Eastern Health and Social Care Trust</b>	Ards, Bangor, Downe, Lagan Valley, Ulster
<b>Southern Health and Social Care Trust</b>	Armagh Community, Banbridge, Craigavon Area, Bluestone, Daisy Hill, Kilkeel Primary Care Centre, Longstone, Lurgan, Mullinure, South Tyrone, St Luke's
<b>Western Health and Social Care Trust</b>	Altnagelvin Area, Erne, Gransha, Lakeview, Roe Valley Outpatients, Tyrone County

## Appendix 4: Definitions

### Outpatient Services

An outpatient service is a consultant led service provided by Health and Social Care Trusts to allow patients to see a consultant, their staff and associated health professionals for assessment in relation to a specific condition. Patients are not admitted into hospital for this assessment. Outpatient services are usually provided during a clinic session providing an opportunity for consultation, investigation and minor treatment. Patients normally attend by prior arrangement. Although a consultant is in overall charge, they may not be present on all occasions the clinic is held. They must, however, be represented by a member of their team.

### Outpatient Appointment

An outpatient appointment is an administrative arrangement enabling patients to see a consultant, their staff and associated health professionals, following an outpatient referral. Outpatient appointments relate to all appointments with a consultant led service, irrespective of the location in which the service is performed.

### New Attendance

A new attendance is the first of a series or the only attendance at an outpatient service with a consultant or their representative following an outpatient referral. In practice, most referrals will be seen as a consequence of a GP referral request; however, referrals may also be received from a range of other sources. First attendances at an outpatient clinic that are initiated by the consultant, who has already seen the patient, are classified as review attendances i.e. following an attendance at an Accident & Emergency unit or following an inpatient admission.

### Review Attendances

A review attendance is an attendance at an outpatient service following; a new outpatient attendance, a previous review attendance, an attendance at an Accident & Emergency unit, a domiciliary visit, or following an inpatient admission, for the same condition. Essentially review appointments are all appointments that are not a first appointment.

### Did Not Attend (DNA'd) / Missed Appointment

This is the number of patients who did not attend, and failed to give advance warning to the hospital, for an outpatient appointment. This includes patients who cancelled their outpatient appointment on the same day on which the appointment was scheduled. These should not be confused with those who could not attend and who did warn the hospital in advance (before the day on which the appointment was scheduled).

### DNA rate

This is the number of patients who did not attend, and failed to give advance warning to the hospital, taken as a rate of attendances and missed appointments. This is calculated by the following formula:

$$((\text{Number of DNAs}) / (\text{Number of attendances} + \text{Number of DNAs})) * 100$$

### Could Not Attend (CNA'd) / Patient Cancellation

This is the number of patients who could not attend, and gave advance warning to the hospital, for an outpatient appointment before the day of the scheduled appointment. These should not be confused with those who either did not attend without prior warning or those who could not attend and informed the hospital on the day on which the appointment was scheduled. This does not include appointments cancelled as a result of the hospital being notified of the patient's death. Depending on the timing of the cancellation, these appointments may be rescheduled for attendance by another patient.

## Appendix 4 (continued)

### CNA rate

This is the number of patients who could not attend, and gave advance warning to the hospital, taken as a rate of attendances and missed appointments. This is calculated by the following formula:

$$((\text{Number of CNAs}) / (\text{Number of attendances} + \text{Number of CNAs})) * 100$$

### Outpatient Appointment Cancelled by the Hospital / Hospital Cancellation

This is the number of outpatient appointments that have been cancelled by the provider Health and Social Care Trust. A cancelled appointment is one which was intended to be held but which did not occur. Such cancellations do not include those cancelled by the patient (Could Not Attend), appointments the patient did not attend without giving prior notice (DNA) and appointments cancelled by the hospital as a result of the patient's death. Depending on the timing of the cancellation, these appointments may be rescheduled for attendance by another patient.

### Hospital Cancellation rate

This is the number of appointments cancelled by hospitals, taken as a rate of attendances and hospital cancellations. This is calculated by the following formula:

$$((\text{Number of hospital cancellations}) / (\text{Number of attendances} + \text{Number of hospital cancellations})) * 100$$

### Reasons for Cancellation

An outpatient appointment may be cancelled by either the provider Health and Social Care Trust (a hospital cancellation) or the patient (patient could not attend – CNA).

Hospital Cancellations may occur for the following reasons:

- Consultant unavailable
- Medical staff / Nurse unavailable
- Patient treated elsewhere
- Consultant cancelled appointment
- Appointment rescheduled (brought forward)
- Appointment rescheduled (put back)
- Cancelled following validation / audit
- Administrative error by hospital
- Hospital transport not available
- Cancelled by hospital in order to rebook as alternative booking method

Patient Cancellations (CNA) may occur for the following reasons:

- Patient cancelled appointment as it is no longer required
- Patient cancelled but the appointment is still required
- GP cancelled appointment

If no reason for cancellation has been recorded, Trusts report this as 'No reason for cancellation recorded'.

If an incorrect reason for cancellation has been recorded, for example if one of the hospital cancellation reasons are recorded against a patient cancellation, Trusts report the reasons for such cancellations as 'Incorrect reason for cancellation recorded'.



## Appendix 4 (continued)

Cancellations due to the death of a patient are reported separately and should not be included within the figures for either Patient Cancellations (CNA) or hospital cancellations.

### Private Patient Attendances

A private patient is one who has opted to have treatment outside the Health Service and has undertaken to pay for all expenses incurred, including treatment and accommodation costs. Private patient attendances relate to private patients who attend an outpatient appointment at a facility provided by a Health and Social Care Trust.

### Specialty

A specialty is a particular branch of medicine or surgery. Each consultant is assigned a main specialty from a list recognised by the Royal Colleges and Faculties. Information is recorded against the specialty of the treating consultant.

### Integrated Clinical Assessment and Treatment Services (ICATS)

ICATS is the term used for a range of outpatient services for patients, which are provided by integrated multi-disciplinary teams of health service professionals, including GPs with a special interest, specialist nurses and allied health professionals. They are provided in a variety of primary, community and secondary care settings and they include assessment, treatment, diagnostic and advisory services.

### Integrated Clinical Assessment and Treatment Services (ICATS) appointments

An appointment at ICATS is known as a Tier 2 appointment. These are non consultant led services. Following ICATS Triage, patients who have not been given either discharge, advice only or referral incomplete outcomes will proceed for either a (i) first outpatient appointment, (ii) a diagnostic test or (iii) an ICATS Tier 2 appointment. Following a first Tier 2 ICATS appointment there are a number of outcomes, including a review Tier 2 ICATS appointment or a referral for a first consultant led outpatient appointment. ICATS Tier 2 appointments attended, DNA'd, CNA'd or cancelled by the hospital (Hospital Cancellations) are defined similarly to those for consultant led outpatient services. Reasons for cancellation of ICATS Tier 2 appointments are not currently collected by the Department.

## Appendix 5: Explanatory Notes

1. From the beginning of 2008/09, the Quarterly Outpatient Activity Return (QOAR) replaced the KH09 (Part 1) as the source of data relating to outpatient activity. As a consequence of this new methodology, the collection of data on scheduled and cancelled clinics was replaced with the collection of data on appointments cancelled by both hospitals (hospital cancellations) and patients (could not attend or CNAs). The definition of a missed appointment or did not attend (DNA) has been amended to also include CNAs on the day of the appointment. As a result of this amendment, DNA figures for 2008/09, 2009/10 and 2010/11 are not directly comparable with those published in previous years. From the beginning of 2010/11, a new reason for appointment cancellation was introduced – ‘Cancelled by hospital in order to rebook as alternative booking method’.
2. For Genito-Urinary Medicine (Specialty 360), patient and hospital cancellation data were unavailable.
3. For Accident and Emergency (Specialty 180), the Downe and Lagan Valley Hospitals within the South Eastern HSC Trust recorded all review cancellations, both by patients and hospitals, as review CNAs as limitations of the Symphony system prevented the differentiation between patient and hospital cancellations.
4. During 2008/09 Health and Social Care Trusts in Northern Ireland undertook a process of reclassifying a number of outpatient services in the Mental Health Programme of Care, from a consultant led to a non consultant led model of service delivery. As a consequence of these reclassifications, data relating to activity within these services are no longer included within the outpatient data contained in this publication. Data users should be aware of these developments when comparing data reported for 2008/09, 2009/10 and 2010/11 with that published in previous years.
5. From 1st April 2010, a number of Integrated Clinical Assessment and Treatment Services (ICATS) were officially introduced within the HSC. ICATS is the term used for a range of outpatient services for patients, which are provided by integrated multi-disciplinary teams of health service professionals, including GPs with a special interest, specialist nurses and allied health professionals. They are provided in a variety of primary, community and secondary care settings and they include assessment, treatment, diagnostic and advisory services. An appointment at ICATS is known as a Tier 2 appointment.
6. ICATS introduced from 1st April 2010 included services in the Belfast HSCT (Ophthalmology and Dermatology), the Northern HSCT (ENT, Ophthalmology and Dermatology), the South Eastern HSCT (ENT, Ophthalmology and Dermatology), the Southern HSCT (Dermatology, Urology and Cardiology) and the Western HSCT (Urology, ENT, Ophthalmology and Cardiology). ICATS in the Trauma and Orthopaedic specialty were introduced on 1st October 2007 and are provided in all five Health and Social Care Trusts. Information on activity at these services is contained in Tables 59 and 60.
7. The consultant led outpatient activity data contained in this publication have been compiled from the Quarterly Outpatient Activity Return (QOAR), which was introduced from 01/04/08. They refer to all HSC hospitals in Northern Ireland that provide consultant led outpatient activity. The ICATS activity data contained in this publication have been compiled from the Quarterly ICATS Activity Return (QIAR), which was introduced from 01/04/10. They refer to all HSC hospitals in Northern Ireland that provide ICATS activity. Any amendments notified by providers after 01/07/11 have not been included.
8. All of the data contained in the tables are also available on a quarterly basis and can be supplied by individual specialty or hospital/Provider if this level of detail is required (as in previous bulletins). In addition, annual data relating to outpatient activity during 2010/11 has also been published in spreadsheet format (Microsoft Excel), split by HSC Trust, hospital, specialty and Programme of Care, in order to aid secondary analysis. These data are available at [http://www.dhsspsni.gov.uk/index/stats\\_research/stats-pubs.htm](http://www.dhsspsni.gov.uk/index/stats_research/stats-pubs.htm).



## Appendix 6: Additional Information

**Further information** on Outpatient Activity in Northern Ireland, is available from:

**Ms. Kerri Burgess**

Hospital Information Branch

Information & Analysis Directorate

Department of Health, Social Services & Public Safety

Stormont Estate

Belfast, BT4 3SQ

☎ Tel: 028 905 23264

☎ Fax: 028 905 23288

✉ Email: [kerri.burgess@dhsspsni.gov.uk](mailto:kerri.burgess@dhsspsni.gov.uk)

**This Statistical bulletin and others published by Hospital Information Branch are available to download from the DHSSPS Internet site at:**

Internet address: [http://www.dhsspsni.gov.uk/index/stats\\_research/hospital-stats/outpatients.htm](http://www.dhsspsni.gov.uk/index/stats_research/hospital-stats/outpatients.htm)