



# NORTHERN IRELAND HOSPITAL STATISTICS: OUTPATIENT ACTIVITY STATISTICS 2009/10 (REVISED)

This publication presents information on activity at consultant led outpatient services in Northern Ireland during the year ending 31 March 2010. It details information on New and Review Attendances, Missed Appointments (DNAs), Patient Cancellations (CNAs) and Hospital Cancellations. All data are presented by HSC Trust, hospital and speciality.

## Issue No: 1

## Date of Publication:

19 October 2010

## Theme:

Outpatient Activity Statistics in Northern Ireland

## Issued by

Hospital Information Branch  
Information & Analysis Directorate  
Department of Health, Social Services & Public Safety  
Stormont Estate  
Belfast  
BT4 3SQ

## Statistician

Kerri Burgess  
(028) 90 523264

## Email

[kerri.burgess@dhsspsni.gov.uk](mailto:kerri.burgess@dhsspsni.gov.uk)

## Internet

[http://www.dhsspsni.gov.uk/index/stats\\_research/stats-activity\\_stats-2.htm](http://www.dhsspsni.gov.uk/index/stats_research/stats-activity_stats-2.htm)

## Contents

	Page
Technical Notes	7
Northern Ireland Outpatient Activity	8
Tables	12
Appendices	88

## Background

As a result of a public consultation early in 2010, the previously known 'Hospital Statistics' publication was discontinued and replaced with four themed statistical publications detailing information on: Inpatient Activity, Outpatient Activity, Mental Health & Learning Disability and Emergency Care.

## Key Points

- During 2009/10, 1,503,529 patients were seen at consultant led services within HSC hospitals in Northern Ireland. This was a decrease of 20,273 (-1.3%) on the 1,523,802 seen during the previous year, and was down 16,806 (-1.1%) on the number seen in 2005/06 (Figure 1 & Table 8).
- 32% (481,345) of patients seen during 2009/10 were new attendances, the other 68% (1,022,184) being reviews, resulting in a new to review ratio of 1:2.1 (Figure 1 & Table 8).
- Compared to 2008/09, new attendances increased by 5,661 (+1.2%), whereas review attendances decreased by 25,934 (-2.5%) (Figure 1 & Table 8).
- Patients missed a total of 172,877 appointments during 2009/10, giving a DNA rate of 10.3. This was down 0.5 points on the comparable rate for 2008/09 (Table 8).
- Patients cancelled 180,067 appointments during 2009/10, a CNA rate of 10.7, which was the same as that reported last year, whereas hospitals cancelled 196,404 appointments, a hospital cancellation rate of 11.6, which was down 0.9 on the rate reported for 2008/09 (Table 8).

## Reader Information

Purpose	Monitor and report activity at consultant led outpatient services in Northern Ireland.
Authors	Kerri Burgess, Rodney Redmond, Laura Smyth.
Publication Date	Thursday 26 <sup>th</sup> August 2010
Revisions published	Tuesday 19 <sup>th</sup> October 2010
Reporting Period	1 <sup>st</sup> April 2009 – 31 <sup>st</sup> March 2010
Publication Issue	1
Statistical Quality	Information detailed in this release has been quality assured with HSC Trusts prior to release.
Target audience	DHSSPS, Chief Executives of HSC Boards and Trusts in Northern Ireland, health care professionals, academics, and Health & Social care stakeholders.
Further copies from	<a href="mailto:statistics@dhsspsni.gov.uk">statistics@dhsspsni.gov.uk</a>
Internet address	<a href="http://www.dhsspsni.gov.uk/index/stats_research/stats-activity_stats-2.htm">http://www.dhsspsni.gov.uk/index/stats_research/stats-activity_stats-2.htm</a>
Price	Free
Copyright	This publication is Crown copyright and may be reproduced free of charge in any format or medium. Any material used must be acknowledged, and the title of the publication specified.

## About the Hospital Information Branch (HIB)

Hospital Information Branch is responsible for the collection, quality assurance, analysis and publication of timely and accurate information derived from a wide range of statistical information returns supplied by the HSC Trusts and Hospitals. Statistical information is collected routinely from a variety of electronic patient level administrative systems and pre-defined EXCEL survey return templates. The Head of the Branch is the Principal Statistician, Mrs. Laura Smyth.

The Branch aims to present information in a meaningful way and provide advice on its uses to customers in the Health and Social Care Committee, Professional Advisory Groups, policy branches within the DHSSPS and the general public. The statistical information collected is used to contribute to major exercises such as reporting on corporate monitoring, Health & Personal Social Services (HPSS) performance tables, other comparative performance exercises, target setting, management frameworks and policy development / evaluation. In addition, the information is used in response to a significantly high volume of Parliamentary / Assembly questions and ad-hoc queries each year.

Information is disseminated through a number of key statistical publications, including: Inpatient Activity, Outpatient Activity, Emergency Care, Mental Health & Learning Disability and Waiting Time Statistics (Inpatient, Outpatient, Diagnostics and Cancer). A detailed list of these publications is available from:

**Website:** [http://www.dhsspsni.gov.uk/index/stats\\_research/stats-activity\\_stats-2.htm](http://www.dhsspsni.gov.uk/index/stats_research/stats-activity_stats-2.htm)

## List of Figures

Figure 1: Total Attendances at consultant led outpatient services in Northern Ireland (2005/06 to 2009/10).....	8
Figure 2: New and review attendance ratio at consultant led outpatient services in Northern Ireland (2005/06 to 2009/10).....	8
Figure 3: Total number of attendances at consultant led outpatient services in Northern Ireland, by HSC Trust (2009/10).....	8
Figure 4: Total number of attendances at consultant led outpatient services in Northern Ireland, by Specialty (2009/10).....	9
Figure 5: New, review and total DNA rates at consultant led outpatient services in Northern Ireland (2008/09 and 2009/10).....	9
Figure 6: Total DNA rate at consultant led outpatient services in Northern Ireland, by HSC Trust (2009/10).....	10
Figure 7: Total DNA rate at consultant led outpatient services in Northern Ireland, by Programme of Care (2008/09 and 2009/10).....	10
Figure 8: New, review and total CNA rates at consultant led outpatient services in Northern Ireland (2008/09 and 2009/10).....	10
Figure 9: Total CNA rate at consultant led outpatient services in Northern Ireland, by Programme of Care (2008/09 and 2009/10).....	11
Figure 10: New, review and total Hospital Cancellation rates at consultant led outpatient services in Northern Ireland (2008/09 to 2009/10).....	11
Figure 11: Total Hospital Cancellation rate at consultant led outpatient services in Northern Ireland, by Programme of Care (2008/09 and 2009/10).....	11

## List of Tables

Table 1a: Activity by HSC Hospital / Trust, 2009/10.....	12
Table 1b: Reason for Appointment Cancellation by HSC Trust, 2009/10.....	14
Table 2a: Activity by Specialty, 2009/10.....	15
Table 2b: Reason for Appointment Cancellation by Specialty, 2009/10.....	17
Table 3: Acute Services (POC 1) - Activity by HSC Hospital / Trust, 2009/10.....	21
Table 4: Maternity and Child Health (POC 2) - Activity by HSC Hospital / Trust, 2009/10.....	23
Table 5: Elderly Care (POC 4) - Activity by HSC Hospital / Trust, 2009/10.....	25
Table 6: Mental Health (POC 5) - Activity by HSC Hospital / Trust, 2009/10.....	27
Table 7: Learning Disability (POC 6) - Activity by HSC Hospital / Trust, 2009/10.....	28
Table 8: POC Trends - Activity by Programme of Care, 2005/06 to 2009/10.....	29
Table 9: Specialty 100 - Activity by HSC Hospital / Trust for General Surgery, 2009/10.....	31
Table 10: Specialty 101 - Activity by HSC Hospital / Trust for Urology, 2009/10.....	33
Table 11: Specialty 110 - Activity by HSC Hospital / Trust for Trauma and Orthopaedics, 2009/10.....	34
Table 12: Specialty 120 - Activity by HSC Hospital / Trust for Ear, Nose and Throat, 2009/10.....	35
Table 13: Specialty 130 - Activity by HSC Hospital / Trust for Ophthalmology, 2009/10.....	37
Table 14: Specialty 140 - Activity by HSC Hospital / Trust for Oral Surgery, 2009/10.....	38
Table 15: Specialty 141 - Activity by HSC Hospital / Trust for Restorative Dentistry, 2009/10.....	39
Table 16: Specialty 142 - Activity by HSC Hospital / Trust for Paediatric Dentistry, 2009/10.....	40
Table 17: Specialty 143 - Activity by HSC Hospital / Trust for Orthodontics, 2009/10.....	41
Table 18: Specialty 150 - Activity by HSC Hospital / Trust for Neurosurgery, 2009/10.....	42
Table 19: Specialty 160 - Activity by HSC Hospital / Trust for Plastic Surgery, 2009/10.....	43
Table 20: Specialty 170 - Activity by HSC Hospital / Trust for Cardiac Surgery, 2009/10.....	44
Table 21: Specialty 171 - Activity by HSC Hospital / Trust for Paediatric Surgery, 2009/10.....	45
Table 22: Specialty 172 - Activity by HSC Hospital / Trust for Thoracic Surgery, 2009/10.....	46
Table 23: Specialty 180 - Activity by HSC Hospital / Trust for Accident and Emergency, 2009/10.....	47
Table 24: Specialty 190 - Activity by HSC Hospital / Trust for Anaesthetics, 2009/10.....	48
Table 25: Specialty 191 - Activity by HSC Hospital / Trust for Pain Management, 2009/10.....	49
Table 26: Specialty 300 - Activity by HSC Hospital / Trust for General Medicine, 2009/10.....	50
Table 27: Specialty 301 - Activity by HSC Hospital / Trust for Gastroenterology, 2009/10.....	52
Table 28: Specialty 302 - Activity by HSC Hospital / Trust for Endocrinology, 2009/10.....	53
Table 29: Specialty 303 - Activity by HSC Hospital / Trust for Haematology (Clinical), 2009/10.....	54
Table 30 Specialty 311 - Activity by HSC Hospital / Trust for Clinical Genetics, 2009/10.....	55
Table 31 Specialty 314 - Activity by HSC Hospital / Trust for Rehabilitation, 2009/10.....	56
Table 32 Specialty 315 - Activity by HSC Hospital / Trust for Palliative Medicine, 2009/10.....	57
Table 33 Specialty 320 - Activity by HSC Hospital / Trust for Cardiology, 2009/10.....	58
Table 34 Specialty 330 - Activity by HSC Hospital / Trust for Dermatology, 2009/10.....	59
Table 35 Specialty 340 - Activity by HSC Hospital / Trust for Thoracic Medicine, 2009/10.....	61
Table 36 Specialty 360 - Activity by HSC Hospital / Trust for Genito-Urinary Medicine, 2009/10.....	62
Table 37 Specialty 361 - Activity by HSC Hospital / Trust for Nephrology, 2009/10.....	63

Table 38 Specialty 370 - Activity by HSC Hospital / Trust for Medical Oncology, 2009/10.....	64
Table 39 Specialty 400 - Activity by HSC Hospital / Trust for Neurology, 2009/10.....	65
Table 40 Specialty 401 - Activity by HSC Hospital / Trust for Clinical Neuro-Physiology, 2009/10.....	66
Table 41 Specialty 410 - Activity by HSC Hospital / Trust for Rheumatology, 2009/10.....	67
Table 42 Specialty 420 - Activity by HSC Hospital / Trust for Paediatrics, 2009/10.....	68
Table 43 Specialty 421 - Activity by HSC Hospital / Trust for Paediatric Neurology, 2009/10.....	70
Table 44 Specialty 430 - Activity by HSC Hospital / Trust for Geriatric Medicine, 2009/10.....	71
Table 45 Specialty 450 - Activity by HSC Hospital / Trust for Dental Medicine Specialties, 2009/10.....	72
Table 46 Specialty 502 - Activity by HSC Hospital / Trust for Gynaecology, 2009/10.....	73
Table 47 Specialty 510 - Activity by HSC Hospital / Trust for Obstetrics (Ante Natal), 2009/10.....	75
Table 48 Specialty 520 - Activity by HSC Hospital / Trust for Obstetrics (Post Natal), 2009/10.....	77
Table 49 Specialty 700 - Activity by HSC Hospital / Trust for Learning Disability, 2009/10.....	78
Table 50 Specialty 710 - Activity by HSC Hospital / Trust for Mental Illness, 2009/10.....	79
Table 51 Specialty 711 - Activity by HSC Hospital / Trust for Child and Adolescent Psychiatry, 2009/10.....	80
Table 52 Specialty 713 - Activity by HSC Hospital / Trust for Psychotherapy, 2009/10.....	81
Table 53 Specialty 715 - Activity by HSC Hospital / Trust for Old Age Psychiatry, 2009/10.....	82
Table 54 Specialty 800 - Activity by HSC Hospital / Trust for Clinical Oncology, 2009/10.....	83
Table 55 Specialty 810 - Activity by HSC Hospital / Trust for Radiology, 2009/10.....	84
Table 56 Specialty 822 - Activity by HSC Hospital / Trust for Chemical Pathology, 2009/10.....	85
Table 57 Specialty 823 - Activity by HSC Hospital / Trust for Haematology, 2009/10.....	86
Table 58 Specialty 990 - Activity by HSC Hospital / Trust for Joint Consultant Clinics, 2009/10.....	87

## Technical Notes

This statistics release is the first of an annual series presenting information on activity at consultant led outpatient services in Northern Ireland. Historically, this information on new and review attendances, missed appointments (DNAs), patient cancellations (CNAs) and hospital cancellations was included within the NI Hospital Statistics publication; however, this publication has now been discontinued.

### Data Collection

The information presented in this publication derives from statistical returns (listed below) provided by HSC Trusts and Hospitals.

- Quarterly Outpatient Activity Return, Parts 1 and 2.

### Rounding

Percentages have been rounded to whole numbers and as a consequence some percentages may not sum to 100.

### Data Quality

All information presented in this publication has been validated and quality assured by HSC Trust and Hospitals prior to publication. HSC Trusts and Hospitals are given a set period of time to submit the information to HIB. Following submission, HIB perform a series of checks to verify that information is consistent both within and across returns. Trend analyses are used to monitor annual variations and emerging trends. Queries arising from validation checks are presented to HSC Trusts for clarification and if required, returns may be amended and/or re-submitted.

Finally, prior to the publication of this information, the data is presented to HSC Trusts and Hospitals for final sign-off.

## A National Statistics Publication

National Statistics are produced to a high professional standard set out in the Code of Practice for Official Statistics. They undergo regular quality assurance reviews to ensure that they meet customer needs. They are produced free from any political interference. As we want to engage with users of our statistics, we invite you to feedback your comments on this publication to:

**Kerri Burgess**

**Email:** [kerri.burgess@dhsspsni.gov.uk](mailto:kerri.burgess@dhsspsni.gov.uk)

**Tel:** (028) 90 523264

# Northern Ireland Outpatient Activity

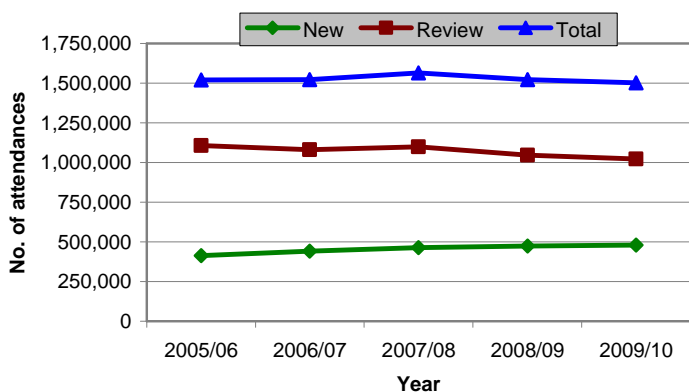
## Outpatient Services

Data contained in this publication relate to activity at consultant led outpatient services within Health and Social Care hospitals in Northern Ireland during 2009/10.

### Attendances<sup>1</sup>

During 2009/10, a total of 1,503,529 patients were seen at consultant led outpatient services within HSC hospitals in Northern Ireland. This was a decrease of 20,273 (-1.3%) on the 1,523,802 seen during the previous year, and was down 16,806 (-1.1%) on the number seen in 2005/06 (Figure 1 & Table 8).

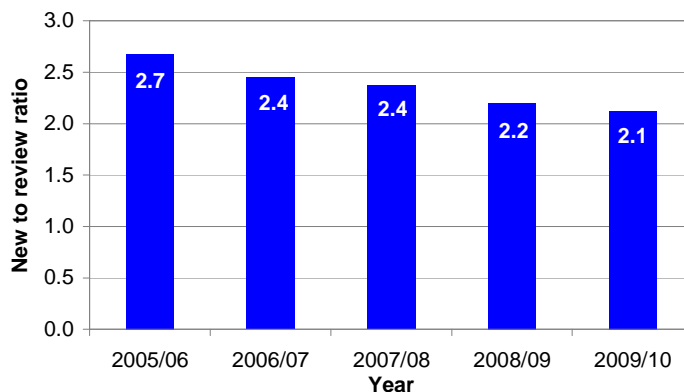
**Figure 1: Total Attendances at consultant led outpatient services in Northern Ireland (2005/06 to 2009/10)**



Some 32% (481,345) of patients seen during 2009/10 were new attendances, with the other 68% (1,022,184) being review attendances. This equated to a new to review ratio of 1:2.1, meaning that for every patient attending a new appointment, there were 2.1 that attended a review appointment (Figure 2 & Table 8).

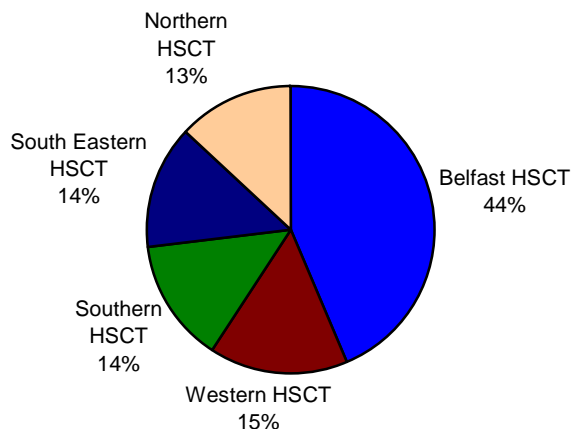
Compared to 2008/09, new attendances increased by 5,661 (+1.2%), whereas review attendances decreased by 25,934 (-2.5%) (Figure 1 & Table 8).

**Figure 2: New and review attendance ratio at consultant led outpatient services in Northern Ireland (2005/06 to 2009/10)**



Belfast HSC Trust accounted for 656,513, or 43.7% of the total attendances in Northern Ireland during 2009/10. This was followed by the Western HSC Trust with 232,698 (15.5%), Southern HSC Trust with 210,966 (14.0%), South Eastern HSC Trust with 207,130 (13.8%) and the Northern HSC Trust with 196,222 (13.1%) (Figure 3 & Table 1a).

**Figure 3: Total number of attendances at consultant led outpatient services in Northern Ireland, by HSC Trust (2009/10)**



The majority of attendances during 2009/10, some 1,346,238 (89.5%), were within the Acute Services Programme of Care, followed by the Maternity and Child Health, 104,848 (7.0%), Elderly Care, 26,670 (1.8%), Mental Health, 20,322 (1.4%) and Learning Disability, 5,451 (0.4%) Programmes of Care (Table 8).

<sup>1</sup> Refer to Explanatory Notes Points 1-3 and 5-6



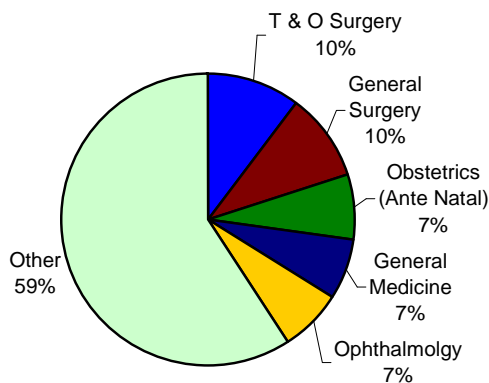
Comparing 2009/10 with 2005/06, attendances decreased in three of the five Programmes of Care, in Mental Health (-77.7%), Elderly Care (-20.4%) and Maternity & Child Health (-3.6%) while increases were reported in the Learning Disability (+6.8%) and Acute (+5.0%) Programmes of Care (Table 8).

There was a decrease in attendances, from 2008/09, within three of the five Programmes of Care, in Mental Health (-50.9%), Elderly Care (-15.0%) and Maternity and Child Health (-1.1%), while Learning Disability and the Acute Services Programmes of Care increased by 5.0% and 0.5% respectively (Table 8).

The main reason for the decreases reported in the Mental Health and Elderly Care Programmes of Care, over the last year, was due to the reclassification of a number of consultant led outpatient services to a new Multi-Disciplinary Team model of service delivery. Attendances at Multi-Disciplinary Teams are not included within the 2009/10 outpatient figures.

In 2009/10, the five specialties with the highest number of attendances were Trauma and Orthopaedic Surgery (10.3%), General Surgery (9.8%), Obstetrics (Ante Natal) (7.0%), General Medicine (6.9%) and Ophthalmology (6.8%) (Figure 4 & Table 2a).

**Figure 4: Total number of attendances at consultant led outpatient services in Northern Ireland, by Specialty (2009/10)**



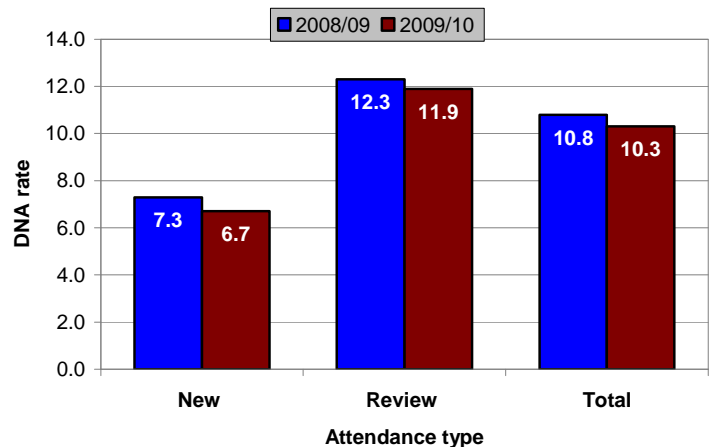
The five specialties with the lowest number of attendances during 2009/10 were Radiology and Obstetrics (Post Natal) (all <0.1%) and Clinical Neuro-Physiology, Psychotherapy and Paediatric Neurology, all 0.1% (Table 2a).

## Missed Appointments / Did Not Attends (DNA)<sup>2</sup>

Patients missed a total of 172,877 outpatient appointments during 2009/10. This equated to a DNA rate of 10.3, down 0.5 points on the comparable rate for 2008/09 (Figure 5 & Table 8).

The DNA rate was higher for review appointments (11.9) than for new appointments (6.7). This compared to respective rates of 12.3 and 7.3 during 2008/09 (Figure 5 & Table 1a).

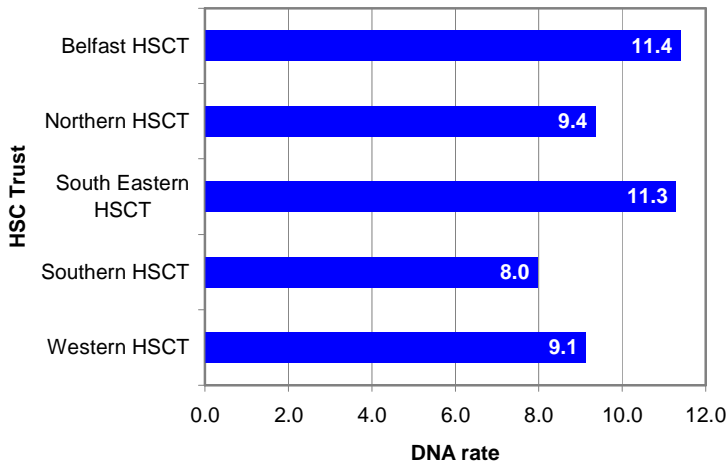
**Figure 5: New, review and total DNA rates at consultant led outpatient services in Northern Ireland (2008/09 and 2009/10)**



During 2009/10, the Belfast HSC Trust had the highest DNA rate at 11.4, followed by the South Eastern HSC Trust (11.3), Northern HSC Trust (9.4), Western HSC Trust (9.1) and Southern HSC Trust (8.0) (Figure 6 & Table 1a).

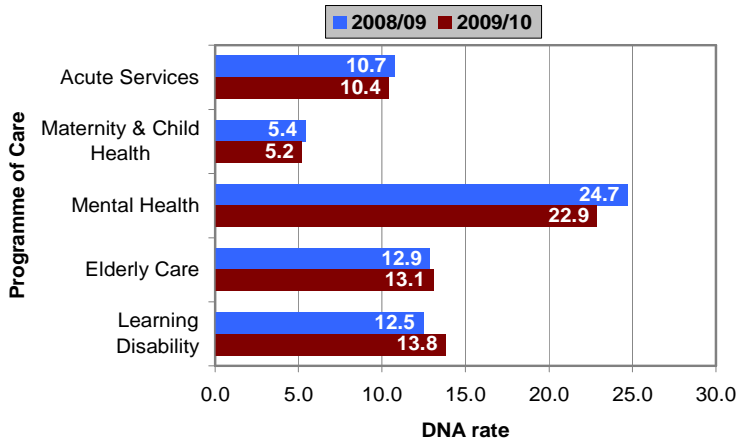
<sup>2</sup> Refer to Explanatory Notes 2-3, 5-6 and Appendix 3

**Figure 6: Total DNA rate at consultant led outpatient services in Northern Ireland, by HSC Trust (2009/10)**



The Programme of Care with the highest DNA rate during 2009/10 was Mental Health (22.9) followed by Learning Disability (13.8), Elderly Care (13.1), Acute Services (10.4) and Maternity and Child Health (5.2) (Figure 7 & Table 8).

**Figure 7: Total DNA rate at consultant led outpatient services in Northern Ireland, by Programme of Care (2008/09 and 2009/10)**



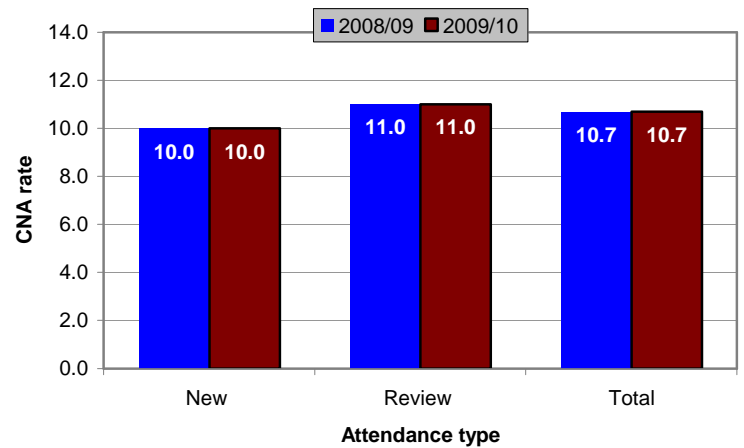
While the DNA rates for new attendances by POC were in the same order as the total rate, the review DNA rate was highest within the Mental Health POC (22.2), followed by Elderly Care (14.9), Learning Disability (12.9), Acute Services (12.1) and Maternity and Child Health (5.5) (Tables 3 - 7).

The five specialties with the highest DNA rates during 2009/10 were, Mental Illness (27.7), Paediatric Dentistry (24.2), Obstetrics (Post Natal) (19.9), Accident and Emergency (19.8) and Old Age Psychiatry (17.7) (Table 2a).

### Patient Cancellations / Could Not Attends (CNA)<sup>3</sup>

Patients cancelled a total of 180,067 outpatient appointments during 2009/10. This equated to a CNA rate of 10.7, the same as that reported for 2008/09. The CNA rate during 2009/10 was higher for review (11.0) than new attendances (10.0) (Figure 8 & Table 1a).

**Figure 8: New, review and total CNA rates at consultant led outpatient services in Northern Ireland (2008/09 and 2009/10)**

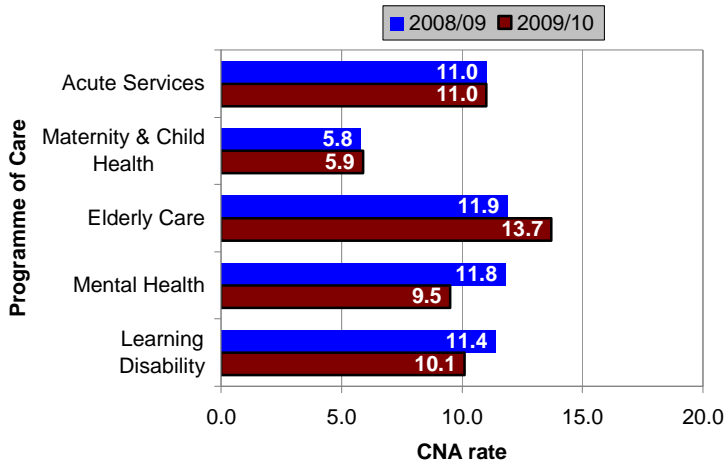


The Northern HSC Trust had the highest CNA rate during 2009/10 (12.6), followed by the Western HSC Trust (11.3), Belfast HSC Trust (10.7), South Eastern HSC Trust (9.8) and Southern HSC Trust (9.1) (Figure 8 & Table 1a).

<sup>3</sup> Refer to Explanatory Notes 2-6 and Appendix 3.

The Programme of Care with the highest CNA rate was Elderly Care (13.7) followed by Acute Services (11.0), Learning Disability (10.1), Mental Health (9.5) and Maternity & Child Health (5.9) (Figure 9 & Table 8).

**Figure 9: Total CNA rate at consultant led outpatient services in Northern Ireland, by Programme of Care (2008/09 and 2009/10)**

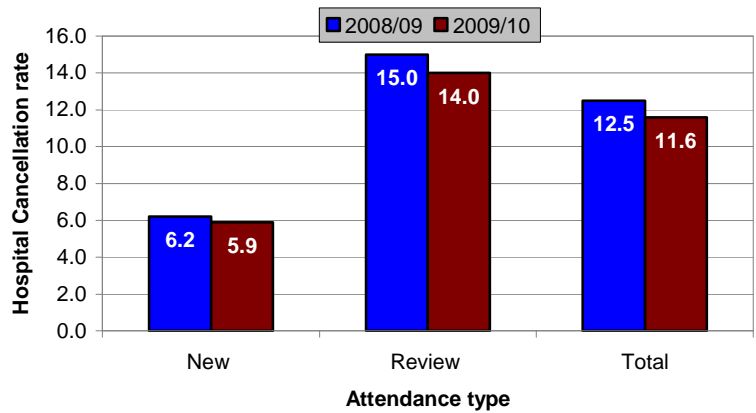


Of the 180,067 appointments cancelled by patients, the vast majority, 125,031 (69.4%) were still required, resulting in HSC Trusts rebooking these appointments for an alternative date (Table 1b).

### Hospital Cancellations<sup>3</sup>

Hospitals cancelled a total of 196,404 outpatient appointments during 2009/10. This equated to a Hospital Cancellation rate of 11.6, down 0.9 points on the rate reported for 2008/09 (12.5). The Hospital Cancellation rate during 2009/10 was higher for review (14.0) than new attendances (5.9) (Figure 10 & Table 1a).

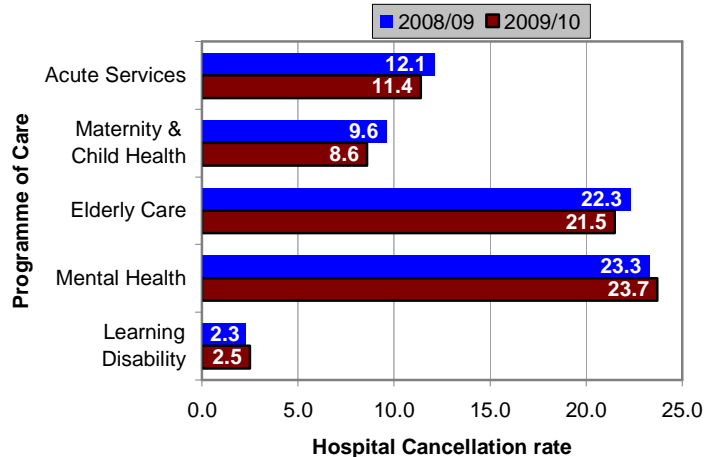
**Figure 10: New, review and total Hospital Cancellation rates at consultant led outpatient services in Northern Ireland (2008/09 to 2009/10)**



The highest Hospital Cancellation rate during 2009/10 was recorded at the Western HSC Trust (15.6), followed by the Northern HSC Trust (13.4), the South Eastern HSC Trust (13.3), the Belfast HSC Trust (10.2) and the Southern HSC Trust (7.5) (Table 1a).

The Programme of Care with the highest Hospital Cancellation rate in 2009/10 was Mental Health (23.7), followed by, Elderly Care (21.5), Acute Services (11.4), Maternity & Child Health (8.6) and Learning Disability (2.5) (Figure 11 & Table 8).

**Figure 11: Total Hospital Cancellation rate at consultant led outpatient services in Northern Ireland, by Programme of Care (2008/09 and 2009/10)**



The five specialties with the highest Hospital Cancellation rate in 2009/10 were Old Age Psychiatry (36.7), Mental Illness (32.4), Neurosurgery (31.3), Chemical Pathology (25.6) and Paediatric Neurology (22.3) (Table 2a).

<sup>3</sup> Refer to Explanatory Notes 2-6 and Appendix 3.

**Table 1a: Activity by HSC Hospital / Trust, 2009/10<sup>4,R</sup>**

Hospital / Trust	Attendances						Hospital Cancellations		Patient	Private
	Seen	New DNA	CNA	Seen	Review DNA	CNA	New	Review	Died	Patient Attendances
Alexandra Gardens	266	263	28	1,598	710	148	62	788	10	0
Beechcroft	500	61	41	6,131	963	1,047	5	217	0	0
Belfast City	40,677	3,119	5,642	105,342	12,342	17,626	2,803	11,335	515	106
Cancer Centre	4,663	269	279	42,161	2,417	2,959	517	9,795	659	213
Mater Infirmorum	18,642	2,028	2,048	49,083	9,970	4,621	1,401	9,506	272	9
Muckamore Abbey	602	119	70	4,484	730	819	4	115	5	0
Musgrave Park	15,256	1,456	176	35,022	4,957	1,313	234	569	7	9
RBHSC	13,450	1,072	1,337	33,172	6,459	5,137	661	8,253	28	0
Royal Maternity	6,077	481	512	18,783	2,127	921	418	1,479	0	0
Royal Victoria	85,602	5,051	8,040	168,845	29,049	25,183	2,850	23,085	845	1,151
Windsor House	530	107	38	5,627	815	367	39	343	3	0
<b>Belfast HSC Trust</b>	<b>186,265</b>	<b>14,026</b>	<b>18,211</b>	<b>470,248</b>	<b>70,539</b>	<b>60,141</b>	<b>8,994</b>	<b>65,485</b>	<b>2,344</b>	<b>1,488</b>
Antrim	20,849	1,420	3,226	47,371	4,604	6,117	1,671	6,450	161	330
Carrickfergus	83	11	23	515	88	100	6	103	5	0
Causeway	19,968	1,046	2,387	38,706	5,406	4,201	1,488	9,713	179	203
Mid Ulster	7,377	459	1,403	15,613	2,103	2,230	450	2,343	36	41
Moyle	2,583	162	559	4,037	549	707	227	621	5	29
Waveney	6,444	492	1,098	12,714	1,488	2,320	514	3,124	44	56
Whiteabbey	7,791	593	1,593	12,171	1,849	2,348	756	2,776	92	95
<b>Northern HSC Trust</b>	<b>65,095</b>	<b>4,183</b>	<b>10,289</b>	<b>131,127</b>	<b>16,087</b>	<b>18,023</b>	<b>5,112</b>	<b>25,130</b>	<b>522</b>	<b>754</b>
Ards	5,719	456	618	11,288	2,278	1,582	457	4,374	159	0
Bangor	6,237	373	591	8,116	1,527	1,147	265	2,384	97	2
Downe	7,463	615	780	12,316	1,629	1,432	773	1,452	33	0
Lagan Valley	13,229	748	1,305	21,899	2,731	2,542	911	1,997	92	0
Ulster	44,438	3,078	3,583	76,425	12,941	9,035	2,094	16,974	498	84
<b>South Eastern HSC Trust</b>	<b>77,086</b>	<b>5,270</b>	<b>6,877</b>	<b>130,044</b>	<b>21,106</b>	<b>15,738</b>	<b>4,500</b>	<b>27,181</b>	<b>879</b>	<b>86</b>

**Table 1a: continued**

Hospital / Trust	Attendances						Hospital Cancellations		Patient	Private
	Seen	New DNA	CNA	Seen	Review DNA	CNA	New	Review	Died	Patient Attendances
Armagh Community	3,489	240	321	6,636	854	506	251	682	6	4
Banbridge	2,123	131	289	4,039	338	401	76	198	4	0
Craigavon Area	36,283	2,186	3,803	69,753	6,672	6,095	1,919	5,670	129	29
Bluestone	354	43	11	2	0	0	11	1	0	0
Daisy Hill	20,515	1,119	2,374	39,491	3,902	4,817	1,088	4,221	80	298
Kilkeel Primary Care Centre	599	29	65	718	52	93	43	128	2	0
Longstone	101	58	2	946	242	0	5	17	0	0
Lurgan	435	74	52	1,371	342	113	19	435	22	0
Mullinure	171	48	17	395	131	36	30	255	11	0
South Tyrone	7,615	532	780	15,930	1,280	1,428	430	1,566	30	0
<b>Southern HSC Trust</b>	<b>71,685</b>	<b>4,460</b>	<b>7,714</b>	<b>139,281</b>	<b>13,813</b>	<b>13,489</b>	<b>3,872</b>	<b>13,173</b>	<b>284</b>	<b>331</b>
Altnagelvin Area	52,056	4,325	6,515	99,878	10,454	12,863	5,253	16,113	325	179
Erne	15,201	1,300	1,945	26,860	2,577	3,525	1,436	11,346	123	652
Gransha	153	30	21	378	49	93	0	0	0	0
Lakeview	59	7	1	1,140	81	67	0	0	0	0
Roe Valley	3,325	316	559	4,038	501	548	375	712	12	0
Tyrone County	10,420	863	1,395	19,190	2,890	2,053	636	7,086	101	29
<b>Western HSC Trust</b>	<b>81,214</b>	<b>6,841</b>	<b>10,436</b>	<b>151,484</b>	<b>16,552</b>	<b>19,149</b>	<b>7,700</b>	<b>35,257</b>	<b>561</b>	<b>860</b>
<b>Northern Ireland</b>	<b>481,345</b>	<b>34,780</b>	<b>53,527</b>	<b>1,022,184</b>	<b>138,097</b>	<b>126,540</b>	<b>30,178</b>	<b>166,226</b>	<b>4,590</b>	<b>3,519</b>

Source: QOAR (Part 1)

Note: DNA = Did not attend, CNA = Could not attend

<sup>R</sup> Data have been revised

<sup>4</sup> Refer to Explanatory Notes 2 and 4-6

**Table 1b: Reason for Appointment Cancellation by HSC Trust, 2009/10<sup>4,R</sup>**

HSC Trust	<u>Reason for cancellation</u>							
	Consultant unavailable	Medical staff / nurse not available	Patient treated elsewhere	Consultant cancelled appointment	Appointment brought forward	Appointment put back	Cancelled following validation / audit	Administrative error by hospital / GP
Belfast	15,117	1,694	4,701	303	2,004	10,548	396	1,959
Northern	7,126	0	1,177	17,598	44	1,321	75	1,677
Southern Eastern	12,057	1,250	1,661	676	3,699	6,901	50	4,012
Southern	3,872	468	1,406	288	2,113	4,231	4	1,367
Western	10,621	1,506	4,380	9,314	3,145	7,539	20	3,363
<b>Northern Ireland</b>	<b>48,793</b>	<b>4,918</b>	<b>13,325</b>	<b>28,179</b>	<b>11,005</b>	<b>30,540</b>	<b>545</b>	<b>12,378</b>

HSC Trust	<u>Reason for cancellation</u>							Total appointments cancelled by either patient or hospital
	Hospital transport not available	Patient cancelled appointment as no longer needed	Patient cancelled appointment but it is still required	GP cancelled appointment on patient's behalf	Reason not recorded	Reason incorrectly recorded	Patient died	
Belfast	118	2,309	48,182	236	59,428	5,836	2,344	152,831
Northern	38	8,294	18,833	0	148	2,223	504	58,554
Southern Eastern	128	2,051	18,436	20	972	2,383	871	54,296
Southern	20	2,229	15,487	17	5,278	1,468	284	38,248
Western	19	2,284	24,093	24	3,859	2,375	547	72,542
<b>Northern Ireland</b>	<b>323</b>	<b>17,167</b>	<b>125,031</b>	<b>297</b>	<b>69,685</b>	<b>14,285</b>	<b>4,550</b>	<b>376,471</b>

Source: QOAR (Part 2)

<sup>R</sup> Data have been revised

<sup>4</sup> Refer to Explanatory Notes 2 and 4-6

**Table 2a: Activity by Specialty, 2009/10<sup>4,R</sup>**

Specialty	Spec Code	Attendances						Hospital Cancellations		Patient Died	Private Patient Attendances
		Seen	New DNA	CNA	Seen	Review DNA	CNA	New	Review		
General Surgery	100	69,550	4,359	9,260	77,874	9,113	10,612	4,591	13,909	445	558
Urology	101	9,684	761	1,433	18,014	2,334	2,499	912	4,226	136	56
T & O Surgery	110	46,897	4,571	2,400	107,887	16,897	8,195	1,689	6,593	118	11
ENT	120	46,728	3,259	5,578	53,257	8,033	8,730	2,698	8,003	105	401
Ophthalmology	130	30,751	2,253	3,974	71,976	7,679	10,141	2,516	10,517	413	63
Oral Surgery	140	11,463	731	1,222	13,289	2,397	1,868	779	1,812	34	148
Restorative Dentistry	141	3,802	247	510	10,258	1,540	1,373	177	1,076	20	8
Paediatric Dentistry	142	655	118	51	2,527	897	324	45	720	4	3
Orthodontics	143	1,697	132	281	13,773	1,448	2,305	111	1,914	0	0
Neurosurgery	150	1,231	43	109	3,266	822	482	110	1,936	36	0
Plastic Surgery	160	5,106	243	476	11,256	2,162	1,960	252	1,447	42	0
Cardiac Surgery	170	1,001	20	53	1,088	67	124	56	165	8	3
Paediatric Surgery	171	2,644	166	250	3,026	625	495	157	1,093	2	0
Thoracic Surgery	172	747	59	87	1,636	266	258	69	306	19	2
Accident & Emergency	180	1,852	549	30	9,514	2,255	879	16	230	2	4
Anaesthetics	190	983	110	46	895	170	113	9	36	0	4
Pain Management	191	4,110	266	669	6,003	591	907	299	721	9	26
General Medicine	300	24,222	1,967	3,201	79,493	13,026	12,280	2,277	19,033	636	47
Gastroenterology	301	6,187	475	1,303	10,926	1,954	2,071	680	2,839	81	2
Endocrinology	302	2,824	251	429	19,515	3,837	3,726	159	2,823	139	1
Haematology (Clin)	303	3,475	328	355	48,538	5,013	3,523	246	4,593	191	31
Clinical Genetics	311	2,735	238	0	661	92	0	0	0	0	0
Rehabilitation	314	1,075	64	55	8,893	669	1,218	222	585	8	0
Palliative Medicine	315	591	34	52	4,960	122	216	47	157	35	0
Cardiology	320	17,586	866	1,598	34,748	4,849	4,273	1,173	9,872	357	84
Dermatology	330	31,319	2,042	3,857	46,005	5,664	7,200	1,317	5,371	116	720
Thoracic Medicine	340	4,620	310	508	13,092	1,896	1,948	275	1,752	153	33
GU Medicine	360	17,225	646	--	8,702	1,125	--	--	--	0	0
Nephrology	361	2,267	192	339	16,711	1,970	2,074	322	3,278	111	2

**Table 2a: continued**

Specialty	Spec Code	Attendances						Hospital Cancellations		Patient	Private Patient
		Seen	New DNA	CNA	Seen	Review DNA	CNA	New	Review	Died	Attendances
Medical Oncology	370	1,011	55	57	11,319	775	606	67	2,228	138	2
Neurology	400	10,922	804	1,333	20,795	2,911	3,383	419	3,469	94	0
Clinical Neuro-Physiology	401	1,017	55	137	0	0	0	81	0	0	0
Rheumatology	410	8,387	413	1,102	23,961	2,355	3,335	579	4,888	72	4
Paediatrics	420	16,300	1,448	1,552	45,730	8,987	6,321	1,162	10,607	22	30
Paediatric Neurology	421	283	21	26	1,152	142	187	17	396	3	0
Geriatric Medicine	430	8,625	850	1,173	13,601	2,200	2,237	721	4,002	294	22
Dental Medicine Specialties	450	2,019	101	249	3,890	1,136	1,020	55	539	1	8
Gynaecology	502	41,858	3,040	6,556	51,981	7,016	8,662	2,720	8,975	58	991
Obstetrics (Ante Natal)	510	28,721	1,294	2,339	75,818	4,352	4,217	1,855	7,979	2	42
Obstetrics (Post Natal)	520	40	9	9	269	68	57	17	48	0	0
Learning Disability	700	400	127	43	5,051	745	567	9	132	5	0
Mental Illness	710	942	573	115	11,596	4,227	842	264	5,752	18	0
Child & Adol. Psych	711	500	61	41	6,131	963	1,047	5	217	0	0
Psychotherapy	713	92	23	7	1,061	181	69	5	78	0	0
Old Age Psych	715	1,251	211	216	3,193	747	620	282	2,290	91	0
Clinical Oncology	800	3,921	211	231	36,571	2,140	2,534	448	8,305	543	212
Radiology	810	0	0	0	1	0	0	0	0	0	0
Chemical Pathology	822	506	75	79	2,306	450	605	53	915	15	1
Haematology	823	215	19	14	6,308	855	192	22	181	14	0
Joint Consultant Clinic	990	1,308	90	122	3,667	334	245	193	218	0	0
<b>Total</b>		<b>481,345</b>	<b>34,780</b>	<b>53,527</b>	<b>1,022,184</b>	<b>138,097</b>	<b>126,540</b>	<b>30,178</b>	<b>166,226</b>	<b>4,590</b>	<b>3,519</b>

Source: QOAR (Part 1)

Note: DNA = Did not attend, CNA = Could not attend

<sup>R</sup> Data have been revised

<sup>4</sup> Refer to Explanatory Notes 2 and 4-6



**Table 2b: Reason for Appointment Cancellation by Specialty, 2009/10<sup>4,R</sup>**

<b>Specialty</b>	<b>Consultant unavailable</b>	<b>Medical staff / nurse not available</b>	<b>Patient treated elsewhere</b>	<b>Consultant cancelled appointment</b>	<b>Appointment brought forward</b>	<b>Appointment put back</b>	<b>Cancelled following validation / audit</b>	<b>Administrative error by hospital / GP</b>
General Surgery	5,109	459	601	4,184	1,132	2,671	51	912
Urology	1,556	222	68	698	203	1,260	20	229
T & O Surgery	1,725	79	132	1,069	629	1,416	40	670
ENT	3,012	574	312	2,231	463	1,407	34	1,052
Ophthalmology	4,192	299	238	1,804	360	1,540	24	793
Oral Surgery	656	140	143	445	180	243	14	275
Restorative Dentistry	132	7	1	1	8	32	37	1
Paediatric Dentistry	140	7	2	0	4	1	13	19
Orthodontics	508	30	4	446	122	237	10	190
Neurosurgery	570	0	0	28	0	576	1	24
Plastic Surgery	617	3	41	17	151	118	14	507
Cardiac Surgery	58	0	0	0	0	2	0	0
Paediatric Surgery	636	0	13	4	34	102	11	97
Thoracic Surgery	68	2	2	16	2	11	0	3
Accident & Emergency	79	0	23	3	33	31	0	35
Anaesthetics	13	0	3	22	0	0	0	3
Pain Management	524	40	18	134	36	138	1	39
General Medicine	6,038	588	1,314	4,124	1,538	3,944	30	1,616
Gastroenterology	919	16	27	999	20	355	1	88
Endocrinology	953	89	33	137	48	183	0	28
Haematology (Clinical)	687	46	325	388	489	1,521	11	504
Rehabilitation	158	109	12	22	17	67	0	98
Palliative Medicine	66	0	39	8	16	51	0	0
Cardiology	3,304	335	464	1,180	526	1,078	31	592
Dermatology	1,919	406	189	1,003	357	1,034	6	659
Thoracic Medicine	456	136	132	23	110	790	0	142

**Table 2b: continued**

<b>Specialty</b>	<b>Hospital transport not available</b>	<b>Patient cancelled appointment as no longer needed</b>	<b>Patient cancelled appointment but it is still required</b>	<b>GP cancelled appointment on patient's behalf</b>	<b>Reason not recorded</b>	<b>Reason incorrectly recorded</b>	<b>Patient died</b>	<b>Total appointments cancelled by either patient or hospital</b>
General Surgery	29	2,475	14,467	10	4,959	1,313	438	38,372
Urology	12	361	3,010	0	1,087	344	136	9,070
T & O Surgery	70	1,070	6,281	5	5,049	642	116	18,877
ENT	4	1,185	10,890	2	3,033	810	108	25,009
Ophthalmology	7	758	9,464	4	6,887	778	404	27,148
Oral Surgery	4	292	2,267	4	921	97	34	5,681
Restorative Dentistry	0	0	484	0	2,382	51	20	3,136
Paediatric Dentistry	0	0	94	0	848	12	4	1,140
Orthodontics	1	164	1,793	0	873	233	0	4,611
Neurosurgery	0	0	305	0	1,098	35	36	2,637
Plastic Surgery	11	189	1,984	2	358	123	42	4,135
Cardiac Surgery	0	0	117	2	195	24	8	398
Paediatric Surgery	0	22	465	0	586	25	2	1,995
Thoracic Surgery	0	6	186	0	392	32	19	720
Accident & Emergency	0	129	328	0	477	17	2	1,155
Anaesthetics	1	16	40	0	99	7	0	204
Pain Management	4	125	1,322	0	106	109	9	2,596
General Medicine	28	1,709	11,561	12	3,083	1,206	632	36,791
Gastroenterology	0	541	2,309	0	1,455	163	77	6,893
Endocrinology	5	68	3,172	5	2,117	299	139	7,137
Haematology (Clinical)	4	291	3,048	2	775	626	186	8,717
Rehabilitation	41	7	628	225	693	3	6	2,080
Palliative Medicine	0	13	205	0	40	34	35	472
Cardiology	13	471	4,093	2	4,296	531	356	16,916
Dermatology	16	1,239	8,077	2	2,228	610	117	17,745
Thoracic Medicine	11	79	2,051	1	290	262	153	4,483

**Table 2b: continued**

<b>Specialty</b>	<b>Consultant unavailable</b>	<b>Medical staff / nurse not available</b>	<b>Patient treated elsewhere</b>	<b>Consultant cancelled appointment</b>	<b>Appointment brought forward</b>	<b>Appointment put back</b>	<b>Cancelled following validation / audit</b>	<b>Administrative error by hospital / GP</b>
Nephrology	493	48	100	756	263	1,293	10	245
Medical Oncology	180	1	996	0	279	582	0	74
Neurology	999	78	393	311	224	463	2	119
Clinical Neuro-Physiology	8	0	0	0	0	0	0	0
Rheumatology	1,032	207	554	1,012	138	656	7	179
Paediatrics	4,267	181	328	2,217	520	1,491	41	1,075
Paediatric Neurology	131	0	1	4	0	22	21	15
Geriatric Medicine	1,311	111	628	240	458	1,172	3	158
Dental Medicine Specialties	294	0	0	0	0	0	82	0
Gynaecology	3,446	179	739	1,967	816	1,767	24	593
Obstetrics (Ante Natal)	595	13	2,107	2,200	517	904	4	463
Obsetrics (Post Natal)	8	0	2	21	1	8	0	21
Learning Disability	27	19	17	32	10	8	0	9
Mental Illness	273	2	45	0	75	252	0	8
Child & Adolescent Psychiatry	0	0	0	0	0	0	0	0
Psychotherapy	36	2	1	0	3	17	0	0
Old Age Psychiatry	553	216	36	27	214	715	0	100
Clinical Oncology	642	274	3,164	0	979	2,278	0	657
Chemical Pathology	375	0	59	350	30	68	0	80
Haematology	11	0	2	11	0	0	0	3
Joint Consultant Clinics	17	0	17	45	0	36	2	3
<b>Total</b>	<b>48,793</b>	<b>4,918</b>	<b>13,325</b>	<b>28,179</b>	<b>11,005</b>	<b>30,540</b>	<b>545</b>	<b>12,378</b>

**Table 2b: continued**

<b>Specialty</b>	<b>Hospital transport not available</b>	<b>Patient cancelled appointment as no longer needed</b>	<b>Patient cancelled appointment but it is still required</b>	<b>GP cancelled appointment on patient's behalf</b>	<b>Reason not recorded</b>	<b>Reason incorrectly recorded</b>	<b>Patient died</b>	<b>Total appointments cancelled by either patient or hospital</b>
Nephrology	3	136	1,936	1	490	239	105	6,013
Medical Oncology	1	22	541	0	60	222	138	2,958
Neurology	8	229	3,573	1	1,930	274	92	8,604
Clinical Neuro-Physiology	0	0	74	0	133	3	0	218
Rheumatology	6	367	3,329	0	2,145	272	75	9,904
Paediatrics	0	799	5,369	1	2,934	419	19	19,642
Paediatric Neurology	0	2	118	0	287	25	3	626
Geriatric Medicine	23	377	2,564	5	715	368	294	8,133
Dental Medicine Specialties	0	0	682	1	785	19	1	1,863
Gynaecology	7	1,759	10,643	5	4,143	825	57	26,913
Obstetrics (Ante Natal)	0	1,990	2,771	4	2,679	2,143	2	16,390
Obstetrics (Post Natal)	0	10	51	0	6	3	0	131
Learning Disability	0	12	593	0	24	0	2	751
Mental Illness	0	22	356	0	5,905	35	18	6,973
Child & Adolescent Psychiatry	0	0	0	0	1,310	0	0	1,310
Psychotherapy	0	4	66	0	19	11	0	159
Old Age Psychiatry	4	69	523	1	882	68	93	3,408
Clinical Oncology	10	71	2,365	0	208	870	543	11,518
Chemical Pathology	0	44	566	0	51	29	15	1,652
Haematology	0	21	88	0	262	11	14	409
Joint Consultant Clinics	0	23	182	0	390	63	0	778
<b>Total</b>	<b>323</b>	<b>17,167</b>	<b>125,031</b>	<b>297</b>	<b>69,685</b>	<b>14,285</b>	<b>4,550</b>	<b>376,471</b>

Source: QOAR (Part 2)

<sup>R</sup> Data have been revised

<sup>4</sup> Refer to Explanatory Notes 2 and 4-6

**Table 3: Acute Services (POC 1) - Activity by HSC Hospital / Trust, 2009/10<sup>4,R</sup>**

Hospital / Trust	Attendances						Hospital Cancellations		Patient Died	Private Patient Attendances
	Seen	New DNA	CNA	Seen	Review DNA	CNA	New	Review		
Belfast City	37,553	2,931	5,073	101,996	11,874	16,741	2,622	11,029	470	105
Cancer Centre	4,663	269	279	42,161	2,417	2,959	517	9,795	659	213
Mater Infirmorum	16,655	1,676	1,902	37,978	6,057	3,905	1,139	3,839	220	9
Muckamore Abbey	362	57	30	1,519	308	319	0	0	0	0
Musgrave Park	14,574	1,321	65	34,906	4,932	1,313	228	569	7	9
RBHSC	13,450	1,072	1,337	33,172	6,459	5,137	661	8,253	28	0
Royal Maternity	1,152	79	93	4,224	671	244	174	353	0	0
Royal Victoria	85,381	5,027	8,016	167,979	28,848	25,077	2,840	22,904	823	1,151
<b>Belfast HSC Trust</b>	<b>173,790</b>	<b>12,432</b>	<b>16,795</b>	<b>423,935</b>	<b>61,566</b>	<b>55,695</b>	<b>8,181</b>	<b>56,742</b>	<b>2,207</b>	<b>1,487</b>
Antrim	19,099	1,370	3,068	44,150	4,494	5,931	1,554	6,039	157	327
Carrickfergus	83	11	23	515	88	100	6	103	5	0
Causeway	18,409	1,004	2,228	30,934	5,237	4,000	1,249	8,967	178	197
Mid Ulster	6,247	404	1,294	12,951	1,979	2,112	370	1,723	36	30
Moyle	2,263	147	506	3,219	507	666	186	479	5	28
Waveney	5,550	437	986	10,545	1,367	2,172	413	2,727	41	55
Whiteabbey	7,370	557	1,512	10,922	1,676	2,097	691	2,561	68	84
<b>Northern HSC Trust</b>	<b>59,021</b>	<b>3,930</b>	<b>9,617</b>	<b>113,236</b>	<b>15,348</b>	<b>17,078</b>	<b>4,469</b>	<b>22,599</b>	<b>490</b>	<b>721</b>
Ards	5,224	348	480	9,489	2,020	1,234	249	2,909	115	0
Bangor	6,237	373	591	8,116	1,527	1,147	265	2,384	97	2
Downe	7,415	613	779	11,725	1,560	1,413	770	1,361	33	0
Lagan Valley	10,865	622	1,114	18,317	2,456	2,315	739	1,633	71	0
Ulster	38,882	2,788	3,194	67,880	12,524	8,373	1,689	15,200	430	65
<b>South Eastern HSC Trust</b>	<b>68,623</b>	<b>4,744</b>	<b>6,158</b>	<b>115,527</b>	<b>20,087</b>	<b>14,482</b>	<b>3,712</b>	<b>23,487</b>	<b>746</b>	<b>67</b>

**Table 3: continued**

Hospital / Trust	Attendances						Hospital Cancellations		Patient Died	Private Patient Attendances
	Seen	New DNA	CNA	Seen	Review DNA	CNA	New	Review		
Armagh Community	3,133	225	279	5,658	793	397	212	570	6	4
Banbridge	2,010	124	273	3,673	316	362	67	172	4	0
Bluestone	354	43	11	2	0	0	11	1	0	0
Craigavon Area	32,660	2,088	3,503	62,466	6,420	5,397	1,777	5,214	125	29
Daisy Hill	18,810	1,060	2,162	32,422	3,721	4,149	989	3,557	79	298
Kilkeel Primary Care Centre	508	25	55	566	49	74	37	104	2	0
Lurgan	0	0	0	63	8	5	0	13	0	0
South Tyrone	6,444	438	685	12,663	1,063	1,127	375	941	27	0
<b>Southern HSC Trust</b>	<b>63,919</b>	<b>4,003</b>	<b>6,968</b>	<b>117,513</b>	<b>12,370</b>	<b>11,511</b>	<b>3,468</b>	<b>10,572</b>	<b>243</b>	<b>331</b>
Altnagelvin Area	48,722	4,134	6,295	92,273	10,021	12,350	5,048	14,981	292	178
Roe Valley	2,941	303	545	3,127	382	500	367	659	11	0
Gransha	153	30	21	378	49	93	0	0	0	0
Erne	13,904	1,232	1,845	21,997	2,202	3,182	1,179	9,721	101	642
Tyrone County	9,701	824	1,340	17,478	2,589	1,993	596	6,967	90	29
<b>Western HSC Trust</b>	<b>75,421</b>	<b>6,523</b>	<b>10,046</b>	<b>135,253</b>	<b>15,243</b>	<b>18,118</b>	<b>7,190</b>	<b>32,328</b>	<b>494</b>	<b>849</b>
<b>Northern Ireland</b>	<b>440,774</b>	<b>31,632</b>	<b>49,584</b>	<b>905,464</b>	<b>124,614</b>	<b>116,884</b>	<b>27,020</b>	<b>145,728</b>	<b>4,180</b>	<b>3,455</b>

Source: QOAR (Part 1)

Note: DNA = Did not attend, CNA = Could not attend

<sup>R</sup> Data have been revised

<sup>4</sup> Refer to Explanatory Notes 2 and 4-6

**Table 4: Maternity and Child Health (POC 2) - Activity by HSC Hospital / Trust, 2009/10<sup>4,R</sup>**

Hospital / Trust	Attendances						Hospital Cancellations		Patient	Private
	Seen	New DNA	CNA	Seen	Review DNA	CNA	New	Review	Died	Patient Attendances
Mater Infirmorum	993	23	12	4,279	541	48	20	143	0	0
Royal Maternity	4,925	402	419	14,559	1,456	677	244	1,126	0	0
<b>Belfast HSC Trust</b>	<b>5,918</b>	<b>425</b>	<b>431</b>	<b>18,838</b>	<b>1,997</b>	<b>725</b>	<b>264</b>	<b>1,269</b>	<b>0</b>	<b>0</b>
Antrim	1,627	47	138	2,994	93	156	107	353	0	3
Causeway	1,559	42	159	7,772	169	201	239	746	1	6
Mid Ulster	1,130	55	109	2,662	124	118	80	620	0	11
Moyle	320	15	53	818	42	41	41	142	0	1
Waveney	804	54	102	1,937	100	100	95	376	0	1
Whiteabbey	220	22	57	473	36	44	48	82	0	9
<b>Northern HSC Trust</b>	<b>5,660</b>	<b>235</b>	<b>618</b>	<b>16,656</b>	<b>564</b>	<b>660</b>	<b>610</b>	<b>2,319</b>	<b>1</b>	<b>31</b>
Downe	48	2	1	591	69	19	3	91	0	0
Lagan Valley	1,834	73	136	2,732	225	126	114	191	0	0
Ulster	3,710	154	227	6,527	240	356	203	1,050	0	0
<b>South Eastern HSC Trust</b>	<b>5,592</b>	<b>229</b>	<b>364</b>	<b>9,850</b>	<b>534</b>	<b>501</b>	<b>320</b>	<b>1,332</b>	<b>0</b>	<b>0</b>
Armagh Community	356	15	42	978	61	109	39	112	0	0
Banbridge	113	7	16	366	22	39	9	26	0	0
Craigavon Area	3,205	72	268	6,866	171	649	121	371	0	0
Daisy Hill	1,705	59	212	7,069	181	668	99	664	1	0
Kilkeel Primary Care Centre	91	4	10	152	3	19	6	24	0	0
South Tyrone	1,029	42	87	2,731	72	288	40	411	0	0
<b>Southern HSC Trust</b>	<b>6,499</b>	<b>199</b>	<b>635</b>	<b>18,162</b>	<b>510</b>	<b>1,772</b>	<b>314</b>	<b>1,608</b>	<b>1</b>	<b>0</b>

**Table 4: continued**

Hospital / Trust	Attendances						Hospital Cancellations		Patient	Private
	Seen	<u>New</u> DNA	CNA	Seen	<u>Review</u> DNA	CNA	New	Review	Died	Patient Attendances
Altnagelvin Area	3,191	152	212	6,746	236	453	181	803	0	1
Erne	996	32	53	3,771	242	104	150	589	0	10
Roe Valley	357	9	11	719	97	29	5	17	0	0
Tyrone County	548	22	24	1,345	240	30	28	90	0	0
<b>Western HSC Trust</b>	<b>5,092</b>	<b>215</b>	<b>300</b>	<b>12,581</b>	<b>815</b>	<b>616</b>	<b>364</b>	<b>1,499</b>	<b>0</b>	<b>11</b>
<b>Northern Ireland</b>	<b>28,761</b>	<b>1,303</b>	<b>2,348</b>	<b>76,087</b>	<b>4,420</b>	<b>4,274</b>	<b>1,872</b>	<b>8,027</b>	<b>2</b>	<b>42</b>

Source: QOAR (Part 1)

Note: DNA = Did not attend, CNA = Could not attend

<sup>R</sup> Data have been revised

<sup>4</sup> Refer to Explanatory Notes 2 and 4-6



**Table 5: Elderly Care (POC 4) - Activity by HSC Hospital / Trust, 2009/10<sup>4</sup>**

Hospital / Trust	Attendances						Hospital Cancellations		Patient	Private
	Seen	<u>New</u> DNA	CNA	Seen	<u>Review</u> DNA	CNA	New	Review	Died	Patient Attendances
Alexandra Gardens	145	22	23	460	193	105	40	387	7	0
Belfast City	3,124	188	569	3,346	468	885	181	306	45	1
Mater Infirmorum	384	64	48	923	296	167	33	438	40	0
Musgrave Park	682	135	111	116	25	0	6	0	0	0
Royal Victoria	221	24	24	866	201	106	10	181	22	0
Windsor House	227	17	7	11	0	0	1	0	0	0
<b>Belfast</b>										
<b>HSC Trust</b>	<b>4,783</b>	<b>450</b>	<b>782</b>	<b>5,722</b>	<b>1,183</b>	<b>1,263</b>	<b>271</b>	<b>1,312</b>	<b>114</b>	<b>1</b>
Antrim	123	3	20	227	17	30	10	58	4	0
Waveney	90	1	10	232	21	48	6	21	3	0
Whiteabbey	201	14	24	776	137	207	17	133	24	2
<b>Northern</b>										
<b>HSC Trust</b>	<b>414</b>	<b>18</b>	<b>54</b>	<b>1,235</b>	<b>175</b>	<b>285</b>	<b>33</b>	<b>212</b>	<b>31</b>	<b>2</b>
Ards	495	108	138	1,799	258	348	208	1,465	44	0
Lagan Valley	530	53	55	850	50	101	58	173	21	0
Ulster	1,846	136	162	2,018	177	306	202	724	68	19
<b>South Eastern</b>										
<b>HSC Trust</b>	<b>2,871</b>	<b>297</b>	<b>355</b>	<b>4,667</b>	<b>485</b>	<b>755</b>	<b>468</b>	<b>2,362</b>	<b>133</b>	<b>19</b>

**Table 5: continued**

Hospital / Trust	Attendances						Hospital Cancellations		Patient Died	Private Patient Attendances
	Seen	New DNA	CNA	Seen	Review DNA	CNA	New	Review		
Craigavon Area	418	26	32	421	81	49	21	85	4	0
Lurgan	435	74	52	1,308	334	108	19	422	22	0
Mullinure	171	48	17	395	131	36	30	255	11	0
South Tyrone	142	52	8	536	145	13	15	214	3	0
<b>Southern HSC Trust</b>	<b>1,166</b>	<b>200</b>	<b>109</b>	<b>2,660</b>	<b>691</b>	<b>206</b>	<b>85</b>	<b>976</b>	<b>40</b>	<b>0</b>
Altnagelvin	143	39	8	859	197	60	24	329	33	0
Erne	301	36	47	1,092	133	239	107	1,036	22	0
Roe Valley (Outpatients)	27	4	3	192	22	19	3	36	1	0
Tyrone County	171	17	31	367	61	30	12	29	11	0
<b>Western HSC Trust</b>	<b>642</b>	<b>96</b>	<b>89</b>	<b>2,510</b>	<b>413</b>	<b>348</b>	<b>146</b>	<b>1,430</b>	<b>67</b>	<b>0</b>
<b>Northern Ireland</b>	<b>9,876</b>	<b>1,061</b>	<b>1,389</b>	<b>16,794</b>	<b>2,947</b>	<b>2,857</b>	<b>1,003</b>	<b>6,292</b>	<b>385</b>	<b>22</b>

Source: QOAR (Part 1)

Note: DNA = Did not attend, CNA = Could not attend

<sup>4</sup> Refer to Explanatory Notes 2 and 4-6

**Table 6: Mental Health (POC 5) - Activity by HSC Hospital / Trust, 2009/10<sup>4</sup>**

Hospital / Trust	Attendances						Hospital Cancellations		Patient	Private
	Seen	<u>New</u> DNA	CNA	Seen	<u>Review</u> DNA	CNA	New	Review	Died	Patient Attendances
Alexandra Gardens	121	241	5	1,138	517	43	22	401	3	0
Beechcroft	500	61	41	6,131	963	1,047	5	217	0	0
Mater Infirmorum	610	265	86	5,903	3,076	501	209	5,086	12	0
Windsor House	303	90	31	5,616	815	367	38	343	3	0
<b>Belfast</b>										
<b>HSC Trust</b>	<b>1,534</b>	<b>657</b>	<b>163</b>	<b>18,788</b>	<b>5,371</b>	<b>1,958</b>	<b>274</b>	<b>6,047</b>	<b>18</b>	<b>0</b>
<b>Northern Ireland</b>	<b>1,534</b>	<b>657</b>	<b>163</b>	<b>18,788</b>	<b>5,371</b>	<b>1,958</b>	<b>274</b>	<b>6,047</b>	<b>18</b>	<b>0</b>

Source: QOAR (Part 1)

Note: DNA = Did not attend, CNA = Could not attend

<sup>4</sup> Refer to Explanatory Notes 2 and 4-6

**Table 7: Learning Disability (POC 6) - Activity by HSC Hospital / Trust, 2009/10<sup>4</sup>**

Hospital / Trust	Attendances						Hospital Cancellations		Patient	Private
	Seen	<u>New</u> DNA	CNA	Seen	<u>Review</u> DNA	CNA	New	Review	Died	Patient Attendances
Muckamore Abbey <b>Belfast</b>	240	62	40	2,965	422	500	4	115	5	0
<b>HSC Trust</b>	<b>240</b>	<b>62</b>	<b>40</b>	<b>2,965</b>	<b>422</b>	<b>500</b>	<b>4</b>	<b>115</b>	<b>5</b>	<b>0</b>
Longstone <b>Southern</b>	101	58	2	946	242	0	5	17	0	0
<b>HSC Trust</b>	<b>101</b>	<b>58</b>	<b>2</b>	<b>946</b>	<b>242</b>	<b>0</b>	<b>5</b>	<b>17</b>	<b>0</b>	<b>0</b>
Lakeview <b>Western</b>	59	7	1	1,140	81	67	0	0	0	0
<b>HSC Trust</b>	<b>59</b>	<b>7</b>	<b>1</b>	<b>1,140</b>	<b>81</b>	<b>67</b>	<b>0</b>	<b>0</b>	<b>0</b>	<b>0</b>
<b>Northern Ireland</b>	<b>400</b>	<b>127</b>	<b>43</b>	<b>5,051</b>	<b>745</b>	<b>567</b>	<b>9</b>	<b>132</b>	<b>5</b>	<b>0</b>

Source: QOAR (Part 1)

Note: DNA = Did not attend, CNA = Could not attend

<sup>4</sup> Refer to Explanatory Notes 2 and 4-6

**Table 8: POC Trends - Activity by Programme of Care, 2005/06 to 2009/10<sup>5,R</sup>**

Programme of Care	Activity Indicator						% Change	% Change
		2005/06	2006/07	2007/08	2008/09	2009/10	08/09 - 09/10	05/06 - 09/10
<b>POC 1: Acute Services</b>		<b>Outpatients</b>						
	New Attendances	365,514	390,479	410,210	430,820	440,774	2.3	20.6
	Review Attendances	916,108	882,734	895,595	908,982	905,464	-0.4	-1.2
	Total Attendances	1,281,622	1,273,213	1,305,805	1,339,802	1,346,238	0.5	5.0
	Total Did Not Attends (DNAs)	--	--	--	159,840	156,246	-2.2	--
	Total Could Not Attends (CNAa)	--	--	--	165,646	166,468	0.5	--
	Total Hospital Cancellations	--	--	--	183,829	172,748	-6.0	--
<b>POC 2: Maternity and Child Health</b>		<b>Outpatients</b>						
	New Attendances	25,777	27,720	29,711	29,355	28,761	-2.0	11.6
	Review Attendances	82,979	84,171	84,075	76,706	76,087	-0.8	-8.3
	Total Attendances	108,756	111,891	113,786	106,061	104,848	-1.1	-3.6
	Did Not Attends (DNAs)	--	--	--	6,023	5,723	-5.0	--
	Total Could Not Attends (CNAa)	--	--	--	6,585	6,622	0.6	--
	Total Hospital Cancellations	--	--	--	11,253	9,899	-12.0	--
<b>POC 4: Elderly Care</b>		<b>Outpatients</b>						
	New Attendances	9,474	10,287	10,864	10,079	9,876	-2.0	4.2
	Review Attendances	24,051	24,918	26,047	21,294	16,794	-21.1	-30.2
	Total Attendances	33,525	35,205	36,911	31,373	26,670	-15.0	-20.4
	Did Not Attends (DNAs)	--	--	--	4,628	4,008	-13.4	--
	Total Could Not Attends (CNAa)	--	--	--	4,243	4,246	0.1	--
	Total Hospital Cancellations	--	--	--	9,015	7,295	-19.1	--
<b>POC 5: Mental Health</b>		<b>Outpatients</b>						
	New Attendances	12,261	13,312	13,499	5,053	1,534	-69.6	-87.5
	Review Attendances	79,068	84,935	90,214	36,324	18,788	-48.3	-76.2
	Total Attendances	91,329	98,247	103,713	41,377	20,322	-50.9	-77.7
	Did Not Attends (DNAs)	--	--	--	13,563	6,028	-55.6	--
	Total Could Not Attends (CNAa)	--	--	--	5,552	2,121	-61.8	--
	Total Hospital Cancellations	--	--	--	12,580	6,321	-49.8	--

**Table 8: continued**

Programme of Care	Activity Indicator						% Change	% Change
		2005/06	2006/07	2007/08	2008/09	2009/10	08/09 - 09/10	05/06 - 09/10
<b>POC 6: Learning Disability</b>		<b>Outpatients</b>						
	New Attendances	402	343	398	377	400	6.1	-0.5
	Review Attendances	4,701	4,773	4,510	4,812	5,051	5.0	7.4
	Total Attendances	5,103	5,116	4,908	5,189	5,451	5.0	6.8
	Did Not Attends (DNAs)	--	--	--	738	872	18.2	--
	Total Could Not Attends (CNAa)	--	--	--	668	610	-8.7	--
	Total Hospital Cancellations	--	--	--	123	141	14.6	--
<b>All POCs</b>		<b>Outpatients</b>						
	New Attendances	413,428	442,141	464,682	475,684	481,345	1.2	16.4
	Review Attendances	1,106,907	1,081,531	1,100,441	1,048,118	1,022,184	-2.5	-7.7
	Total Attendances	1,520,335	1,523,672	1,565,123	1,523,802	1,503,529	-1.3	-1.1
	Did Not Attends (DNAs)	--	--	--	184,792	172,877	-6.4	--
	Total Could Not Attends (CNAa)	--	--	--	182,694	180,067	-1.4	--
	Total Hospital Cancellations	--	--	--	216,800	196,404	-9.4	--

Source: QOAR (Part 1)

Note: DNA = Did not attend, CNA = Could not attend

<sup>R</sup> Data have been revised

<sup>5</sup> Refer to Explanatory Notes Points 1-6

**Table 9: Specialty 100 - Activity by HSC Hospital / Trust for General Surgery, 2009/10<sup>R</sup>**

Hospital / Trust	Attendances						Hospital Cancellations	Patient Died	Private Patient Attendances	
	New			Review						
	Seen	DNA	CNA	Seen	DNA	CNA	New	Review		
Belfast City	9,552	508	1,281	12,241	1,207	2,065	526	1,403	68	3
Mater Infirmorum	3,513	300	371	6,419	933	564	224	723	42	1
Royal Victoria	4,981	303	603	12,040	1,888	1,682	192	2,145	125	28
<b>Belfast HSC Trust</b>	<b>18,046</b>	<b>1,111</b>	<b>2,255</b>	<b>30,700</b>	<b>4,028</b>	<b>4,311</b>	<b>942</b>	<b>4,271</b>	<b>235</b>	<b>32</b>
Antrim	5,656	346	850	5,483	489	856	428	1,116	30	186
Causeway	3,600	201	411	3,475	586	408	261	798	17	0
Mid Ulster	1,982	133	646	1,467	218	300	140	268	3	12
Moyle	843	56	245	663	67	145	85	97	0	26
Waveney	677	64	150	1,023	135	155	138	476	5	54
Whiteabbey	2,025	143	431	1,650	208	274	251	637	9	27
<b>Northern HSC Trust</b>	<b>14,783</b>	<b>943</b>	<b>2,733</b>	<b>13,761</b>	<b>1,703</b>	<b>2,138</b>	<b>1,303</b>	<b>3,392</b>	<b>64</b>	<b>305</b>
Ards	569	34	42	525	127	70	16	281	9	0
Bangor	1,024	73	93	611	128	96	45	118	3	0
Downe	1,229	84	135	800	85	86	78	92	2	0
Lagan Valley	1,948	72	149	1,026	84	97	108	96	2	0
Ulster	6,309	438	614	5,476	852	734	226	1,805	55	0
<b>South Eastern HSC Trust</b>	<b>11,079</b>	<b>701</b>	<b>1,033</b>	<b>8,438</b>	<b>1,276</b>	<b>1,083</b>	<b>473</b>	<b>2,392</b>	<b>71</b>	<b>0</b>
Armagh Community	513	34	33	429	44	29	44	74	1	4
Banbridge	258	17	25	575	56	59	1	28	0	0
Craigavon Area	8,418	465	952	7,698	590	776	526	580	19	3
Daisy Hill	5,258	237	564	7,232	456	783	143	494	8	25
Kilkeel Primary Care Centre	326	12	24	156	7	17	25	10	0	0
South Tyrone	449	33	47	320	29	34	9	10	0	0
<b>Southern HSC Trust</b>	<b>15,222</b>	<b>798</b>	<b>1,645</b>	<b>16,410</b>	<b>1,182</b>	<b>1,698</b>	<b>748</b>	<b>1,196</b>	<b>28</b>	<b>32</b>

**Table 9: continued**

<b>Hospital / Trust</b>	<b>Attendances</b>						<b>Hospital Cancellations</b>		<b>Patient</b>	<b>Private</b>
	<b>Seen</b>	<b>New DNA</b>	<b>CNA</b>	<b>Seen</b>	<b>Review DNA</b>	<b>CNA</b>	<b>New</b>	<b>Review</b>	<b>Died</b>	<b>Patient Attendances</b>
Altnagelvin Area	6,859	556	988	5,099	527	813	871	1,813	30	145
Erne	1,683	120	310	1,857	181	318	110	587	13	43
Roe Valley	214	19	31	328	54	66	54	128	1	0
Tyrone County	1,664	111	265	1,281	162	185	90	130	3	1
<b>Western HSC Trust</b>	<b>10,420</b>	<b>806</b>	<b>1,594</b>	<b>8,565</b>	<b>924</b>	<b>1,382</b>	<b>1,125</b>	<b>2,658</b>	<b>47</b>	<b>189</b>
<b>Northern Ireland</b>	<b>69,550</b>	<b>4,359</b>	<b>9,260</b>	<b>77,874</b>	<b>9,113</b>	<b>10,612</b>	<b>4,591</b>	<b>13,909</b>	<b>445</b>	<b>558</b>

Source: QOAR (Part 1)

Note: DNA = Did not attend, CNA = Could not attend, <sup>R</sup> Data have been revised



**Table 10: Specialty 101 - Activity by HSC Hospital / Trust for Urology, 2009/10**

Hospital / Trust	Attendances						Hospital Cancellations		Patient	Private
	Seen	New DNA	CNA	Seen	Review DNA	CNA	New	Review	Died	Patient Attendances
Belfast City	2,511	198	428	5,570	625	850	297	914	36	0
Mater Infirmorum	835	72	95	1,025	191	164	176	446	8	0
Royal Victoria	460	26	65	329	106	86	12	69	2	0
<b>Belfast HSC Trust</b>	<b>3,806</b>	<b>296</b>	<b>588</b>	<b>6,924</b>	<b>922</b>	<b>1,100</b>	<b>485</b>	<b>1,429</b>	<b>46</b>	<b>0</b>
Causeway	1,415	80	221	2,677	557	423	131	1,252	37	53
<b>Northern HSC Trust</b>	<b>1,415</b>	<b>80</b>	<b>221</b>	<b>2,677</b>	<b>557</b>	<b>423</b>	<b>131</b>	<b>1,252</b>	<b>37</b>	<b>53</b>
Ards	292	14	34	400	36	36	13	237	7	0
Bangor	213	14	24	309	56	40	10	97	9	0
Downe	314	28	35	406	23	23	22	18	0	0
Lagan Valley	412	26	25	339	10	28	34	50	4	0
Ulster	768	50	54	1,073	169	113	29	512	15	0
<b>South Eastern HSC Trust</b>	<b>1,999</b>	<b>132</b>	<b>172</b>	<b>2,527</b>	<b>294</b>	<b>240</b>	<b>108</b>	<b>914</b>	<b>35</b>	<b>0</b>
Banbridge	62	3	11	197	17	13	4	23	1	0
Craigavon Area	726	80	96	2,358	253	227	37	289	8	3
South Tyrone	181	15	33	112	5	15	2	1	0	0
<b>Southern HSC Trust</b>	<b>969</b>	<b>98</b>	<b>140</b>	<b>2,667</b>	<b>275</b>	<b>255</b>	<b>43</b>	<b>313</b>	<b>9</b>	<b>3</b>
Altnagelvin Area	876	84	151	2,906	249	447	54	270	7	0
Roe Valley	619	71	161	288	36	32	91	45	2	0
Tyrone County	0	0	0	25	1	2	0	3	0	0
<b>Western HSC Trust</b>	<b>1,495</b>	<b>155</b>	<b>312</b>	<b>3,219</b>	<b>286</b>	<b>481</b>	<b>145</b>	<b>318</b>	<b>9</b>	<b>0</b>
<b>Northern Ireland</b>	<b>9,684</b>	<b>761</b>	<b>1,433</b>	<b>18,014</b>	<b>2,334</b>	<b>2,499</b>	<b>912</b>	<b>4,226</b>	<b>136</b>	<b>56</b>

Source: QOAR (Part 1)

Note: DNA = Did not attend, CNA = Could not attend

**Table 11: Specialty 110 - Activity by HSC Hospital / Trust for Trauma and Orthopaedics, 2009/10<sup>R</sup>**

Hospital / Trust	Attendances						Hospital Cancellations		Patient	Private
	Seen	New DNA	CNA	Seen	Review DNA	CNA	New	Review	Died	Patient Attendances
Mater Infirmorum	485	56	31	537	137	49	44	97	1	0
Musgrave Park	12,775	1,165	0	24,800	4,119	0	0	0	0	7
RBHSC	2,327	228	151	5,854	895	758	87	1,166	1	0
Royal Victoria	12,222	847	477	25,051	4,355	2,201	274	1,121	36	0
<b>Belfast HSC Trust</b>	<b>27,809</b>	<b>2,296</b>	<b>659</b>	<b>56,242</b>	<b>9,506</b>	<b>3,008</b>	<b>405</b>	<b>2,384</b>	<b>38</b>	<b>7</b>
Downe	1,091	154	76	2,023	340	193	56	84	2	0
Lagan Valley	0	0	0	3,120	831	577	19	4	0	0
Ulster	4,332	573	190	12,458	2,135	1,059	105	692	29	0
<b>South Eastern HSC Trust</b>	<b>5,423</b>	<b>727</b>	<b>266</b>	<b>17,601</b>	<b>3,306</b>	<b>1,829</b>	<b>180</b>	<b>780</b>	<b>31</b>	<b>0</b>
Armagh Community	93	2	9	90	4	12	2	6	0	0
Craigavon Area	2,039	105	116	11,923	1,600	741	296	1,746	19	0
<b>Southern HSC Trust</b>	<b>2,132</b>	<b>107</b>	<b>125</b>	<b>12,013</b>	<b>1,604</b>	<b>753</b>	<b>298</b>	<b>1,752</b>	<b>19</b>	<b>0</b>
Altnagelvin Area	9,182	1,089	1,211	18,961	2,050	2,312	692	1,266	22	4
Erne	1,374	210	97	1,929	229	224	81	354	3	0
Roe Valley	196	7	19	202	9	21	18	25	0	0
Tyrone County	781	135	23	939	193	48	15	32	5	0
<b>Western HSC Trust</b>	<b>11,533</b>	<b>1,441</b>	<b>1,350</b>	<b>22,031</b>	<b>2,481</b>	<b>2,605</b>	<b>806</b>	<b>1,677</b>	<b>30</b>	<b>4</b>
<b>Northern Ireland</b>	<b>46,897</b>	<b>4,571</b>	<b>2,400</b>	<b>107,887</b>	<b>16,897</b>	<b>8,195</b>	<b>1,689</b>	<b>6,593</b>	<b>118</b>	<b>11</b>

Source: QOAR

Note: DNA = Did not attend, CNA = Could not attend, <sup>R</sup> Data have been revised

**Table 12: Specialty 120 - Activity by HSC Hospital / Trust for Ear, Nose and Throat, 2009/10<sup>R</sup>**

Hospital / Trust	Attendances						Hospital Cancellations		Patient	Private
	Seen	New DNA	CNA	Seen	Review DNA	CNA	New	Review	Died	Patient Attendances
Belfast City	3,141	172	410	4,136	587	818	144	268	6	7
Mater Infirmorum	1,468	108	165	641	169	98	65	87	2	0
RBHSC	1,802	121	147	3,573	846	887	46	742	2	0
Royal Victoria	4,316	310	539	9,585	1,731	1,722	116	759	36	1
<b>Belfast HSC Trust</b>	<b>10,727</b>	<b>711</b>	<b>1,261</b>	<b>17,935</b>	<b>3,333</b>	<b>3,525</b>	<b>371</b>	<b>1,856</b>	<b>46</b>	<b>8</b>
Antrim	2,474	203	355	2,718	402	393	122	436	2	91
Causeway	2,482	163	313	2,359	460	352	129	341	4	101
Mid Ulster	840	50	86	978	141	159	36	137	2	0
Moyle	530	37	99	547	55	95	46	95	1	0
Waveney	1,876	134	273	1,716	274	329	80	621	2	0
Whiteabbey	794	57	93	584	100	95	59	74	3	0
<b>Northern HSC Trust</b>	<b>8,996</b>	<b>644</b>	<b>1,219</b>	<b>8,902</b>	<b>1,432</b>	<b>1,423</b>	<b>472</b>	<b>1,704</b>	<b>14</b>	<b>192</b>
Ards	533	37	32	554	145	80	12	104	11	0
Bangor	2,278	131	185	1,247	190	259	46	431	4	0
Downe	1,407	103	165	961	129	110	227	113	0	0
Lagan Valley	1,697	90	177	1,423	91	130	69	79	3	0
Ulster	2,967	200	220	2,800	490	536	116	860	7	0
<b>South Eastern HSC Trust</b>	<b>8,882</b>	<b>561</b>	<b>779</b>	<b>6,985</b>	<b>1,045</b>	<b>1,115</b>	<b>470</b>	<b>1,587</b>	<b>25</b>	<b>0</b>
Armagh Community	334	29	26	408	43	20	40	46	0	0
Banbridge	217	8	29	244	30	33	4	12	0	0
Craigavon Area	5,038	355	562	5,599	589	587	217	394	4	2
Daisy Hill	1,821	159	229	1,812	216	258	125	157	1	146
South Tyrone	1,445	113	152	1,301	116	123	79	83	0	0
<b>Southern HSC Trust</b>	<b>8,855</b>	<b>664</b>	<b>998</b>	<b>9,364</b>	<b>994</b>	<b>1,021</b>	<b>465</b>	<b>692</b>	<b>5</b>	<b>148</b>

**Table 12: continued**

Hospital / Trust	Attendances						Hospital Cancellations		Patient	Private
	Seen	New DNA	CNA	Seen	Review DNA	CNA	New	Review	Died	Patient Attendances
Altnagelvin Area	4,964	411	616	5,767	657	885	598	1,382	10	0
Erne	1,877	113	327	1,557	164	234	171	210	3	26
Roe Valley	413	53	88	221	30	56	76	72	1	0
Tyrone County	2,014	102	290	2,526	378	471	75	500	1	27
<b>Western HSC Trust</b>	<b>9,268</b>	<b>679</b>	<b>1,321</b>	<b>10,071</b>	<b>1,229</b>	<b>1,646</b>	<b>920</b>	<b>2,164</b>	<b>15</b>	<b>53</b>
<b>Northern Ireland</b>	<b>46,728</b>	<b>3,259</b>	<b>5,578</b>	<b>53,257</b>	<b>8,033</b>	<b>8,730</b>	<b>2,698</b>	<b>8,003</b>	<b>105</b>	<b>401</b>

Source: QOAR (Part 1)

Note: DNA = Did not attend, CNA = Could not attend, <sup>R</sup> Data have been revised

**Table 13: Specialty 130 - Activity by HSC Hospital / Trust for Ophthalmology, 2009/10<sup>R</sup>**

Hospital / Trust	Attendances						Hospital Cancellations		Patient	Private
	Seen	New DNA	CNA	Seen	Review DNA	CNA	New	Review	Died	Patient Attendances
Belfast City	251	14	39	1,047	113	252	5	48	6	0
Mater Infirmorum	3,304	256	449	11,019	827	1,179	263	988	30	2
Royal Victoria	11,007	768	1,552	30,154	3,746	5,215	535	2,904	151	48
<b>Belfast HSC Trust</b>	<b>14,562</b>	<b>1,038</b>	<b>2,040</b>	<b>42,220</b>	<b>4,686</b>	<b>6,646</b>	<b>803</b>	<b>3,940</b>	<b>187</b>	<b>50</b>
Ards	1,139	80	92	1,427	297	165	68	528	19	0
Bangor	275	16	21	909	133	95	8	595	23	0
Downe	828	37	67	762	53	64	57	79	4	0
Lagan Valley	997	48	98	1,234	88	110	60	137	1	0
Ulster	886	86	83	1,580	391	215	49	578	41	0
<b>South Eastern HSC Trust</b>	<b>4,125</b>	<b>267</b>	<b>361</b>	<b>5,912</b>	<b>962</b>	<b>649</b>	<b>242</b>	<b>1,917</b>	<b>88</b>	<b>0</b>
Armagh Community	352	29	52	1,262	106	92	35	143	0	0
Craigavon Area	1,182	100	116	1,797	102	137	81	174	8	0
Daisy Hill	1,819	105	253	2,188	213	223	134	174	6	7
South Tyrone	448	28	37	964	59	67	47	139	3	0
<b>Southern HSC Trust</b>	<b>3,801</b>	<b>262</b>	<b>458</b>	<b>6,211</b>	<b>480</b>	<b>519</b>	<b>297</b>	<b>630</b>	<b>17</b>	<b>7</b>
Altnagelvin Area	6,227	481	798	13,981	1,237	1,855	974	2,778	100	6
Erne	980	114	130	1,723	196	237	109	1,048	18	0
Roe Valley	175	29	53	160	25	30	15	55	0	0
Tyrone County	881	62	134	1,769	93	205	76	149	3	0
<b>Western HSC Trust</b>	<b>8,263</b>	<b>686</b>	<b>1,115</b>	<b>17,633</b>	<b>1,551</b>	<b>2,327</b>	<b>1,174</b>	<b>4,030</b>	<b>121</b>	<b>6</b>
<b>Northern Ireland</b>	<b>30,751</b>	<b>2,253</b>	<b>3,974</b>	<b>71,976</b>	<b>7,679</b>	<b>10,141</b>	<b>2,516</b>	<b>10,517</b>	<b>413</b>	<b>63</b>

Source: QOAR (Part 1)

Note: DNA = Did not attend, CNA = Could not attend, <sup>R</sup> Data have been revised

**Table 14: Specialty 140 - Activity by HSC Hospital / Trust for Oral Surgery, 2009/10<sup>R</sup>**

Hospital / Trust	Attendances						Hospital Cancellations		Patient	Private
	Seen	New DNA	CNA	Seen	Review DNA	CNA	New	Review	Died	Patient Attendances
Royal Victoria	5,064	195	316	2,769	668	456	112	386	5	3
<b>Belfast HSC Trust</b>	<b>5,064</b>	<b>195</b>	<b>316</b>	<b>2,769</b>	<b>668</b>	<b>456</b>	<b>112</b>	<b>386</b>	<b>5</b>	<b>3</b>
Antrim	257	26	64	304	54	47	27	50	0	0
Mid Ulster	111	7	27	191	42	44	11	44	1	0
<b>Northern HSC Trust</b>	<b>368</b>	<b>33</b>	<b>91</b>	<b>495</b>	<b>96</b>	<b>91</b>	<b>38</b>	<b>94</b>	<b>1</b>	<b>0</b>
Ulster	2,102	183	149	4,855	1,043	598	114	506	9	58
<b>South Eastern HSC Trust</b>	<b>2,102</b>	<b>183</b>	<b>149</b>	<b>4,855</b>	<b>1,043</b>	<b>598</b>	<b>114</b>	<b>506</b>	<b>9</b>	<b>58</b>
Craigavon Area	125	17	23	303	51	38	17	9	1	0
Daisy Hill	421	31	74	780	89	154	40	78	2	79
<b>Southern HSC Trust</b>	<b>546</b>	<b>48</b>	<b>97</b>	<b>1,083</b>	<b>140</b>	<b>192</b>	<b>57</b>	<b>87</b>	<b>3</b>	<b>79</b>
Altnagelvin Area	2,754	197	434	3,546	408	456	345	590	13	0
Erne	629	75	135	541	42	75	113	149	3	8
<b>Western HSC Trust</b>	<b>3,383</b>	<b>272</b>	<b>569</b>	<b>4,087</b>	<b>450</b>	<b>531</b>	<b>458</b>	<b>739</b>	<b>16</b>	<b>8</b>
<b>Northern Ireland</b>	<b>11,463</b>	<b>731</b>	<b>1,222</b>	<b>13,289</b>	<b>2,397</b>	<b>1,868</b>	<b>779</b>	<b>1,812</b>	<b>34</b>	<b>148</b>

Source: QOAR (Part 1)

Note: DNA = Did not attend, CNA = Could not attend, <sup>R</sup> Data have been revised

**Table 15: Specialty 141 - Activity by HSC Hospital / Trust for Restorative Dentistry, 2009/10<sup>R</sup>**

Hospital / Trust	Attendances						Hospital Cancellations		Patient Died	Private Patient Attendances
	Seen	<u>New</u> DNA	CNA	Seen	<u>Review</u> DNA	CNA	New	Review		
Royal Victoria	3,779	243	507	9,930	1,502	1,344	175	1,057	19	6
<b>Belfast HSC Trust</b>	<b>3,779</b>	<b>243</b>	<b>507</b>	<b>9,930</b>	<b>1,502</b>	<b>1,344</b>	<b>175</b>	<b>1,057</b>	<b>19</b>	<b>6</b>
Ulster	23	4	3	309	32	29	2	16	1	2
<b>South Eastern HSC Trust</b>	<b>23</b>	<b>4</b>	<b>3</b>	<b>309</b>	<b>32</b>	<b>29</b>	<b>2</b>	<b>16</b>	<b>1</b>	<b>2</b>
Craigavon Area	0	0	0	19	6	0	0	3	0	0
<b>Southern HSC Trust</b>	<b>0</b>	<b>0</b>	<b>0</b>	<b>19</b>	<b>6</b>	<b>0</b>	<b>0</b>	<b>3</b>	<b>0</b>	<b>0</b>
<b>Northern Ireland</b>	<b>3,802</b>	<b>247</b>	<b>510</b>	<b>10,258</b>	<b>1,540</b>	<b>1,373</b>	<b>177</b>	<b>1,076</b>	<b>20</b>	<b>8</b>

Source: QOAR (Part 1)

Note: DNA = Did not attend, CNA = Could not attend, <sup>R</sup> Data have been revised

**Table 16: Specialty 142 - Activity by HSC Hospital / Trust for Paediatric Dentistry, 2009/10<sup>R</sup>**

Hospital / Trust	Attendances						Hospital Cancellations		Patient	Private
	Seen	<u>New</u> DNA	CNA	Seen	<u>Review</u> DNA	CNA	New	Review	Died	Patient Attendances
RBHSC	336	66	36	1,022	487	154	4	317	4	0
Royal Victoria	229	14	15	833	106	158	27	328	0	3
<b>Belfast HSC Trust</b>	<b>565</b>	<b>80</b>	<b>51</b>	<b>1,855</b>	<b>593</b>	<b>312</b>	<b>31</b>	<b>645</b>	<b>4</b>	<b>3</b>
Ulster	0	0	0	16	8	2	10	45	0	0
<b>South Eastern HSC Trust</b>	<b>0</b>	<b>0</b>	<b>0</b>	<b>16</b>	<b>8</b>	<b>2</b>	<b>10</b>	<b>45</b>	<b>0</b>	<b>0</b>
Craigavon Area	90	38	0	656	296	10	4	30	0	0
<b>Southern HSC Trust</b>	<b>90</b>	<b>38</b>	<b>0</b>	<b>656</b>	<b>296</b>	<b>10</b>	<b>4</b>	<b>30</b>	<b>0</b>	<b>0</b>
<b>Northern Ireland</b>	<b>655</b>	<b>118</b>	<b>51</b>	<b>2,527</b>	<b>897</b>	<b>324</b>	<b>45</b>	<b>720</b>	<b>4</b>	<b>3</b>

Source: QOAR (Part 1)

Note: DNA = Did not attend, CNA = Could not attend, <sup>R</sup> Data have been revised



**Table 17: Specialty 143 - Activity by HSC Hospital / Trust for Orthodontics, 2009/10<sup>R</sup>**

Hospital / Trust	Attendances						Hospital Cancellations		Patient	Private
	Seen	New DNA	CNA	Seen	Review DNA	CNA	New	Review	Died	Patient Attendances
Royal Victoria	407	17	60	2,985	288	469	18	374	0	0
<b>Belfast HSC Trust</b>	<b>407</b>	<b>17</b>	<b>60</b>	<b>2,985</b>	<b>288</b>	<b>469</b>	<b>18</b>	<b>374</b>	<b>0</b>	<b>0</b>
Causeway	103	7	16	503	92	78	15	57	0	0
Mid Ulster	59	10	9	590	77	77	9	101	0	0
Waveney	193	52	46	1,939	220	466	19	314	0	0
<b>Northern HSC Trust</b>	<b>355</b>	<b>69</b>	<b>71</b>	<b>3,032</b>	<b>389</b>	<b>621</b>	<b>43</b>	<b>472</b>	<b>0</b>	<b>0</b>
Craigavon Area	444	15	56	3,446	426	559	7	224	0	0
<b>Southern HSC Trust</b>	<b>444</b>	<b>15</b>	<b>56</b>	<b>3,446</b>	<b>426</b>	<b>559</b>	<b>7</b>	<b>224</b>	<b>0</b>	<b>0</b>
Altnagelvin Area	321	24	58	2,853	183	425	22	322	0	0
Erne	170	7	36	1,457	162	231	21	522	0	0
<b>Western HSC Trust</b>	<b>491</b>	<b>31</b>	<b>94</b>	<b>4,310</b>	<b>345</b>	<b>656</b>	<b>43</b>	<b>844</b>	<b>0</b>	<b>0</b>
<b>Northern Ireland</b>	<b>1,697</b>	<b>132</b>	<b>281</b>	<b>13,773</b>	<b>1,448</b>	<b>2,305</b>	<b>111</b>	<b>1,914</b>	<b>0</b>	<b>0</b>

Source: QOAR (Part 1)

Note: DNA = Did not attend, CNA = Could not attend, <sup>R</sup> Data have been revised

**Table 18: Specialty 150 - Activity by HSC Hospital / Trust for Neurosurgery, 2009/10<sup>R</sup>**

Hospital / Trust	Attendances						Hospital Cancellations		Patient	Private
	Seen	New DNA	CNA	Seen	Review DNA	CNA	New	Review	Died	Patient Attendances
RBHSC	87	4	3	411	95	42	7	148	4	0
Royal Victoria	1,139	39	106	2,841	722	435	103	1,755	31	0
<b>Belfast HSC Trust</b>	<b>1,226</b>	<b>43</b>	<b>109</b>	<b>3,252</b>	<b>817</b>	<b>477</b>	<b>110</b>	<b>1,903</b>	<b>35</b>	<b>0</b>
Altnagelvin Area	5	0	0	14	5	5	0	33	1	0
<b>Western HSC Trust</b>	<b>5</b>	<b>0</b>	<b>0</b>	<b>14</b>	<b>5</b>	<b>5</b>	<b>0</b>	<b>33</b>	<b>1</b>	<b>0</b>
<b>Northern Ireland</b>	<b>1,231</b>	<b>43</b>	<b>109</b>	<b>3,266</b>	<b>822</b>	<b>482</b>	<b>110</b>	<b>1,936</b>	<b>36</b>	<b>0</b>

Source: QOAR (Part 1)

Note: DNA = Did not attend, CNA = Could not attend, <sup>R</sup> Data have been revised

**Table 19: Specialty 160 - Activity by HSC Hospital / Trust for Plastic Surgery, 2009/10<sup>R</sup>**

Hospital / Trust	Attendances						Hospital Cancellations	Patient Died	Private Patient Attendances
	New			Review					
	Seen	DNA	CNA	Seen	DNA	CNA	New	Review	
RBHSC	544	31	71	1,247	217	252	48	324	0
Royal Victoria	31	19	2	420	104	70	3	34	2
<b>Belfast HSC Trust</b>	<b>575</b>	<b>50</b>	<b>73</b>	<b>1,667</b>	<b>321</b>	<b>322</b>	<b>51</b>	<b>358</b>	<b>2</b>
Ards	267	16	50	641	71	153	4	56	3
Ulster	4,264	177	353	8,948	1,770	1,485	197	1,033	37
<b>South Eastern HSC Trust</b>	<b>4,531</b>	<b>193</b>	<b>403</b>	<b>9,589</b>	<b>1,841</b>	<b>1,638</b>	<b>201</b>	<b>1,089</b>	<b>40</b>
<b>Northern Ireland</b>	<b>5,106</b>	<b>243</b>	<b>476</b>	<b>11,256</b>	<b>2,162</b>	<b>1,960</b>	<b>252</b>	<b>1,447</b>	<b>42</b>

Source: QOAR (Part 1)

Note: DNA = Did not attend, CNA = Could not attend, <sup>R</sup> Data have been revised

**Table 20: Specialty 170 - Activity by HSC Hospital / Trust for Cardiac Surgery, 2009/10<sup>R</sup>**

Hospital / Trust	Attendances						Hospital Cancellations		Patient	Private
	Seen	<u>New</u> DNA	CNA	Seen	<u>Review</u> DNA	CNA	New	Review	Died	Patient Attendances
Royal Victoria	1,001	20	53	1,088	67	124	56	165	8	3
<b>Belfast HSC Trust</b>	<b>1,001</b>	<b>20</b>	<b>53</b>	<b>1,088</b>	<b>67</b>	<b>124</b>	<b>56</b>	<b>165</b>	<b>8</b>	<b>3</b>
<b>Northern Ireland</b>	<b>1,001</b>	<b>20</b>	<b>53</b>	<b>1,088</b>	<b>67</b>	<b>124</b>	<b>56</b>	<b>165</b>	<b>8</b>	<b>3</b>

Source: QOAR (Part 1)

Note: DNA = Did not attend, CNA = Could not attend, <sup>R</sup> Data have been revised

**Table 21: Specialty 171 - Activity by HSC Hospital / Trust for Paediatric Surgery, 2009/10<sup>R</sup>**

Hospital / Trust	Attendances						Hospital Cancellations	Patient Died	Private Patient Attendances	
	New			Review						
	Seen	DNA	CNA	Seen	DNA	CNA	New	Review		
RBHSC	1,796	100	180	2,420	469	385	107	739	1	0
<b>Belfast HSC Trust</b>	<b>1,796</b>	<b>100</b>	<b>180</b>	<b>2,420</b>	<b>469</b>	<b>385</b>	<b>107</b>	<b>739</b>	<b>1</b>	<b>0</b>
Ulster	848	66	70	606	156	110	50	354	1	0
<b>South Eastern HSC Trust</b>	<b>848</b>	<b>66</b>	<b>70</b>	<b>606</b>	<b>156</b>	<b>110</b>	<b>50</b>	<b>354</b>	<b>1</b>	<b>0</b>
<b>Northern Ireland</b>	<b>2,644</b>	<b>166</b>	<b>250</b>	<b>3,026</b>	<b>625</b>	<b>495</b>	<b>157</b>	<b>1,093</b>	<b>2</b>	<b>0</b>

Source: QOAR (Part 1)

Note: DNA = Did not attend, CNA = Could not attend, <sup>R</sup> Data have been revised

**Table 22: Specialty 172 - Activity by HSC Hospital / Trust for Thoracic Surgery, 2009/10<sup>R</sup>**

Hospital / Trust	Attendances						Hospital Cancellations		Patient	Private
	Seen	<u>New</u> DNA	CNA	Seen	<u>Review</u> DNA	CNA	New	Review	Died	Patient Attendances
Belfast City	103	13	12	129	25	25	5	7	0	0
Royal Victoria	619	45	66	1,331	218	215	61	253	17	2
<b>Belfast HSC Trust</b>	<b>722</b>	<b>58</b>	<b>78</b>	<b>1,460</b>	<b>243</b>	<b>240</b>	<b>66</b>	<b>260</b>	<b>17</b>	<b>2</b>
Craigavon Area	0	0	0	66	5	2	0	10	1	0
Daisy Hill	21	1	8	61	4	8	1	15	0	0
<b>Southern HSC Trust</b>	<b>21</b>	<b>1</b>	<b>8</b>	<b>127</b>	<b>9</b>	<b>10</b>	<b>1</b>	<b>25</b>	<b>1</b>	<b>0</b>
Altnagelvin Area	4	0	1	49	14	8	2	21	1	0
<b>Western HSC Trust</b>	<b>4</b>	<b>0</b>	<b>1</b>	<b>49</b>	<b>14</b>	<b>8</b>	<b>2</b>	<b>21</b>	<b>1</b>	<b>0</b>
<b>Northern Ireland</b>	<b>747</b>	<b>59</b>	<b>87</b>	<b>1,636</b>	<b>266</b>	<b>258</b>	<b>69</b>	<b>306</b>	<b>19</b>	<b>2</b>

Source: QOAR (Part 1)

Note: DNA = Did not attend, CNA = Could not attend, <sup>R</sup> Data have been revised

**Table 23: Specialty 180 - Activity by HSC Hospital / Trust for Accident and Emergency, 2009/10<sup>6</sup>**

Hospital / Trust	Attendances						Hospital Cancellations		Patient	Private
	Seen	New DNA	CNA	Seen	Review DNA	CNA	New	Review	Died	Patient Attendances
Belfast City	1,002	461	0	705	359	0	0	0	0	0
Mater Infirmorum	519	81	25	459	118	47	12	27	0	0
<b>Belfast HSC Trust</b>	<b>1,521</b>	<b>542</b>	<b>25</b>	<b>1,164</b>	<b>477</b>	<b>47</b>	<b>12</b>	<b>27</b>	<b>0</b>	<b>0</b>
Antrim	0	0	0	489	0	0	0	0	0	0
Whiteabbey	271	0	0	46	0	0	0	0	0	0
<b>Northern HSC Trust</b>	<b>271</b>	<b>0</b>	<b>0</b>	<b>535</b>	<b>0</b>	<b>0</b>	<b>0</b>	<b>0</b>	<b>0</b>	<b>0</b>
Lagan Valley	0	0	0	855	286	222	0	0	0	0
Ards	0	0	0	656	106	37	0	0	0	0
Bangor	0	0	0	675	125	32	0	0	0	0
Downe	0	0	0	704	145	150	0	0	0	0
Ulster	0	0	0	1,973	526	92	0	0	0	0
<b>South Eastern HSC Trust</b>	<b>0</b>	<b>0</b>	<b>0</b>	<b>4,863</b>	<b>1,188</b>	<b>533</b>	<b>0</b>	<b>0</b>	<b>0</b>	<b>0</b>
Daisy Hill	60	7	5	2,952	590	299	4	203	2	4
<b>Southern HSC Trust</b>	<b>60</b>	<b>7</b>	<b>5</b>	<b>2,952</b>	<b>590</b>	<b>299</b>	<b>4</b>	<b>203</b>	<b>2</b>	<b>4</b>
<b>Northern Ireland</b>	<b>1,852</b>	<b>549</b>	<b>30</b>	<b>9,514</b>	<b>2,255</b>	<b>879</b>	<b>16</b>	<b>230</b>	<b>2</b>	<b>4</b>

Source: QOAR (Part 1)

Note: DNA = Did not attend, CNA = Could not attend

<sup>6</sup> Refer to Explanatory Notes Point 7

**Table 24: Specialty 190 - Activity by HSC Hospital / Trust for Anaesthetics, 2009/10**

Hospital / Trust	Attendances						Hospital Cancellations		Patient	Private
	Seen	<u>New</u> DNA	CNA	Seen	<u>Review</u> DNA	CNA	New	Review	Died	Patient Attendances
Musgrave Park	624	86	12	525	116	87	0	0	0	1
<b>Belfast HSC Trust</b>	<b>624</b>	<b>86</b>	<b>12</b>	<b>525</b>	<b>116</b>	<b>87</b>	<b>0</b>	<b>0</b>	<b>0</b>	<b>1</b>
Antrim	58	2	3	92	2	4	2	16	0	1
Causeway	301	22	31	278	52	22	7	20	0	2
<b>Northern HSC Trust</b>	<b>359</b>	<b>24</b>	<b>34</b>	<b>370</b>	<b>54</b>	<b>26</b>	<b>9</b>	<b>36</b>	<b>0</b>	<b>3</b>
<b>Northern Ireland</b>	<b>983</b>	<b>110</b>	<b>46</b>	<b>895</b>	<b>170</b>	<b>113</b>	<b>9</b>	<b>36</b>	<b>0</b>	<b>4</b>

Source: QOAR (Part 1)

Note: DNA = Did not attend, CNA = Could not attend



**Table 25: Specialty 191 - Activity by HSC Hospital / Trust for Pain Management, 2009/10**

Hospital / Trust	Attendances						Hospital Cancellations		Patient	Private
	Seen	New DNA	CNA	Seen	Review DNA	CNA	New	Review	Died	Patient Attendances
Belfast City	742	45	162	1,593	145	380	94	261	3	0
Mater Infirmorum	267	21	26	124	23	13	13	55	2	0
<b>Belfast HSC Trust</b>	<b>1,009</b>	<b>66</b>	<b>188</b>	<b>1,717</b>	<b>168</b>	<b>393</b>	<b>107</b>	<b>316</b>	<b>5</b>	<b>0</b>
Antrim	135	13	27	654	81	132	5	26	2	22
Causeway	551	17	66	762	94	38	28	37	0	4
<b>Northern HSC Trust</b>	<b>686</b>	<b>30</b>	<b>93</b>	<b>1,416</b>	<b>175</b>	<b>170</b>	<b>33</b>	<b>63</b>	<b>2</b>	<b>26</b>
Ulster	1,061	85	122	1,214	92	104	13	39	0	0
<b>South Eastern HSC Trust</b>	<b>1,061</b>	<b>85</b>	<b>122</b>	<b>1,214</b>	<b>92</b>	<b>104</b>	<b>13</b>	<b>39</b>	<b>0</b>	<b>0</b>
Banbridge	40	0	5	47	4	3	2	5	0	0
Craigavon Area	242	18	24	356	32	25	13	22	1	0
Daisy Hill	56	7	9	127	11	21	19	71	0	0
South Tyrone	153	12	20	254	9	34	27	38	0	0
<b>Southern HSC Trust</b>	<b>491</b>	<b>37</b>	<b>58</b>	<b>784</b>	<b>56</b>	<b>83</b>	<b>61</b>	<b>136</b>	<b>1</b>	<b>0</b>
Altnagelvin Area	380	21	96	662	52	146	72	152	1	0
Tyrone County	483	27	112	210	48	11	13	15	0	0
<b>Western HSC Trust</b>	<b>863</b>	<b>48</b>	<b>208</b>	<b>872</b>	<b>100</b>	<b>157</b>	<b>85</b>	<b>167</b>	<b>1</b>	<b>0</b>
<b>Northern Ireland</b>	<b>4,110</b>	<b>266</b>	<b>669</b>	<b>6,003</b>	<b>591</b>	<b>907</b>	<b>299</b>	<b>721</b>	<b>9</b>	<b>26</b>

Source: QOAR (Part 1)

Note: DNA = Did not attend, CNA = Could not attend

**Table 26: Specialty 300 - Activity by HSC Hospital / Trust for General Medicine, 2009/10<sup>R</sup>**

Hospital / Trust	Attendances						Hospital Cancellations	Patient Died	Private Patient Attendances	
	New			Review						
	Seen	DNA	CNA	Seen	DNA	CNA	New	Review		
Belfast City	807	78	184	4,462	572	1,001	75	478	14	1
Mater Infirmorum	2,207	263	245	7,677	1,793	967	124	605	87	0
Royal Victoria	2,014	170	312	4,274	1,314	982	104	501	15	0
<b>Belfast HSC Trust</b>	<b>5,028</b>	<b>511</b>	<b>741</b>	<b>16,413</b>	<b>3,679</b>	<b>2,950</b>	<b>303</b>	<b>1,584</b>	<b>116</b>	<b>1</b>
Antrim	1,028	73	197	2,399	393	482	98	564	39	0
Carrickfergus	5	0	2	454	76	85	3	94	5	0
Causeway	2,471	145	298	5,050	909	617	246	2,618	54	2
Mid Ulster	983	70	138	5,884	874	886	55	687	21	0
Moyle	110	6	17	450	86	104	28	152	3	0
Waveney	518	35	104	1,359	218	373	80	424	19	0
Whiteabbey	697	59	106	2,783	536	562	82	480	26	40
<b>Northern HSC Trust</b>	<b>5,812</b>	<b>388</b>	<b>862</b>	<b>18,379</b>	<b>3,092</b>	<b>3,109</b>	<b>592</b>	<b>5,019</b>	<b>167</b>	<b>42</b>
Ards	330	26	27	2,177	570	280	51	572	18	0
Bangor	189	9	12	1,358	310	204	12	425	18	0
Downe	801	68	85	3,605	505	502	82	569	19	0
Lagan Valley	1,384	112	137	4,560	504	485	114	682	42	0
Ulster	3,073	217	343	10,040	1,557	1,320	213	3,520	86	0
<b>South Eastern HSC Trust</b>	<b>5,777</b>	<b>432</b>	<b>604</b>	<b>21,740</b>	<b>3,446</b>	<b>2,791</b>	<b>472</b>	<b>5,768</b>	<b>183</b>	<b>0</b>
Armagh Community	134	7	17	603	50	48	14	59	1	0
Craigavon Area	895	54	103	1,827	134	173	64	167	8	4
Daisy Hill	1,404	88	133	4,422	519	477	135	662	30	0
Kilkeel Primary Care Centre	23	1	5	79	14	7	0	13	0	0
South Tyrone	596	30	63	1,148	80	115	68	191	0	0
<b>Southern HSC Trust</b>	<b>3,052</b>	<b>180</b>	<b>321</b>	<b>8,079</b>	<b>797</b>	<b>820</b>	<b>281</b>	<b>1,092</b>	<b>39</b>	<b>4</b>

**Table 26: continued**

<b>Hospital / Trust</b>	<b>Attendances</b>						<b>Hospital Cancellations</b>		<b>Patient</b>	<b>Private</b>
	<b>Seen</b>	<b><u>New</u></b>	<b>CNA</b>	<b>Seen</b>	<b><u>Review</u></b>	<b>CNA</b>	<b>New</b>	<b>Review</b>	<b>Died</b>	<b>Patient</b>
Altnagelvin Area	2,490	236	420	9,518	1,245	1,579	384	1,683	53	0
Erne	1,297	140	152	2,519	338	537	139	1,492	33	0
Roe Valley	160	30	24	740	99	122	28	128	5	0
Tyrone County	606	50	77	2,105	330	372	78	2,267	40	0
<b>Western HSC Trust</b>	<b>4,553</b>	<b>456</b>	<b>673</b>	<b>14,882</b>	<b>2,012</b>	<b>2,610</b>	<b>629</b>	<b>5,570</b>	<b>131</b>	<b>0</b>
<b>Northern Ireland</b>	<b>24,222</b>	<b>1,967</b>	<b>3,201</b>	<b>79,493</b>	<b>13,026</b>	<b>12,280</b>	<b>2,277</b>	<b>19,033</b>	<b>636</b>	<b>47</b>

Source: QOAR (Part 1)

Note: DNA = Did not attend, CNA = Could not attend, <sup>R</sup> Data have been revised

**Table 27: Specialty 301 - Activity by HSC Hospital / Trust for Gastroenterology, 2009/10<sup>R</sup>**

Hospital / Trust	Attendances						Hospital Cancellations		Patient	Private
	Seen	<u>New</u> DNA	CNA	Seen	<u>Review</u> DNA	CNA	New	Review	Died	Patient Attendances
Belfast City	943	85	219	2,535	419	569	92	256	6	1
Royal Victoria	2,276	155	324	4,444	985	756	117	1,177	52	0
<b>Belfast HSC Trust</b>	<b>3,219</b>	<b>240</b>	<b>543</b>	<b>6,979</b>	<b>1,404</b>	<b>1,325</b>	<b>209</b>	<b>1,433</b>	<b>58</b>	<b>1</b>
Antrim	778	58	153	1,689	214	310	172	566	7	0
Causeway	0	0	0	3	0	0	0	3	0	0
Mid Ulster	167	6	28	318	45	66	20	83	2	0
Waveney	0	0	0	116	11	31	0	16	0	0
Whiteabbey	1,271	114	486	1,411	237	302	210	670	12	1
<b>Northern HSC Trust</b>	<b>2,216</b>	<b>178</b>	<b>667</b>	<b>3,537</b>	<b>507</b>	<b>709</b>	<b>402</b>	<b>1,338</b>	<b>21</b>	<b>1</b>
Downe	261	20	25	296	34	34	45	54	2	0
<b>South Eastern HSC Trust</b>	<b>261</b>	<b>20</b>	<b>25</b>	<b>296</b>	<b>34</b>	<b>34</b>	<b>45</b>	<b>54</b>	<b>2</b>	<b>0</b>
Armagh Community	115	12	16	114	9	3	5	14	0	0
Craigavon Area	284	18	46	0	0	0	16	0	0	0
South Tyrone	92	7	6	0	0	0	3	0	0	0
<b>Southern HSC Trust</b>	<b>491</b>	<b>37</b>	<b>68</b>	<b>114</b>	<b>9</b>	<b>3</b>	<b>24</b>	<b>14</b>	<b>0</b>	<b>0</b>
<b>Northern Ireland</b>	<b>6,187</b>	<b>475</b>	<b>1,303</b>	<b>10,926</b>	<b>1,954</b>	<b>2,071</b>	<b>680</b>	<b>2,839</b>	<b>81</b>	<b>2</b>

Source: QOAR (Part 1)

Note: DNA = Did not attend, CNA = Could not attend, <sup>R</sup> Data have been revised

**Table 28: Specialty 302 - Activity by HSC Hospital / Trust for Endocrinology, 2009/10<sup>R</sup>**

Hospital / Trust	Attendances						Hospital Cancellations		Patient	Private
	Seen	<u>New</u> DNA	CNA	Seen	<u>Review</u> DNA	CNA	New	Review	Died	Patient Attendances
Belfast City	343	74	86	4,055	494	1,190	32	292	21	0
Royal Victoria	1,590	85	223	10,360	2,767	1,891	37	2,013	105	1
<b>Belfast HSC Trust</b>	<b>1,933</b>	<b>159</b>	<b>309</b>	<b>14,415</b>	<b>3,261</b>	<b>3,081</b>	<b>69</b>	<b>2,305</b>	<b>126</b>	<b>1</b>
Antrim	141	9	23	286	38	37	25	67	2	0
Causeway	123	10	16	155	28	26	31	174	0	0
Waveney	5	1	5	0	0	0	0	0	0	0
<b>Northern HSC Trust</b>	<b>269</b>	<b>20</b>	<b>44</b>	<b>441</b>	<b>66</b>	<b>63</b>	<b>56</b>	<b>241</b>	<b>2</b>	<b>0</b>
Lagan Valley	93	4	9	649	67	66	5	78	1	0
<b>South Eastern HSC Trust</b>	<b>93</b>	<b>4</b>	<b>9</b>	<b>649</b>	<b>67</b>	<b>66</b>	<b>5</b>	<b>78</b>	<b>1</b>	<b>0</b>
Banbridge	19	1	1	330	40	31	0	2	1	0
Craigavon Area	150	34	22	1,548	140	193	7	61	4	0
Daisy Hill	291	23	39	1,107	167	170	17	78	3	0
Kilkeel Primary Care Centre	9	3	0	180	16	26	3	36	1	0
South Tyrone	60	7	5	845	80	96	2	22	1	0
<b>Southern HSC Trust</b>	<b>529</b>	<b>68</b>	<b>67</b>	<b>4,010</b>	<b>443</b>	<b>516</b>	<b>29</b>	<b>199</b>	<b>10</b>	<b>0</b>
<b>Northern Ireland</b>	<b>2,824</b>	<b>251</b>	<b>429</b>	<b>19,515</b>	<b>3,837</b>	<b>3,726</b>	<b>159</b>	<b>2,823</b>	<b>139</b>	<b>1</b>

Source: QOAR (Part 1)

Note: DNA = Did not attend, CNA = Could not attend, <sup>R</sup> Data have been revised

**Table 29: Specialty 303 - Activity by HSC Hospital / Trust for Haematology (Clinical), 2009/10**

Hospital / Trust	Attendances						Hospital Cancellations		Patient	Private
	Seen	New DNA	CNA	Seen	Review DNA	CNA	New	Review	Died	Patient Attendances
Belfast City	1,486	158	165	21,264	2,577	2,021	112	1,463	77	3
Cancer Centre	0	0	0	1,086	1	0	0	4	0	0
Royal Victoria	5	0	0	1,104	123	85	1	15	0	0
<b>Belfast HSC Trust</b>	<b>1,491</b>	<b>158</b>	<b>165</b>	<b>23,454</b>	<b>2,701</b>	<b>2,106</b>	<b>113</b>	<b>1,482</b>	<b>77</b>	<b>3</b>
Antrim	375	36	37	5,211	226	229	7	235	16	0
Mid Ulster	55	16	4	236	42	10	0	8	4	0
Whiteabbey	45	13	14	255	28	41	3	24	2	0
<b>Northern HSC Trust</b>	<b>475</b>	<b>65</b>	<b>55</b>	<b>5,702</b>	<b>296</b>	<b>280</b>	<b>10</b>	<b>267</b>	<b>22</b>	<b>0</b>
Ards	87	9	12	483	41	60	9	230	8	0
Bangor	85	11	9	276	24	32	8	81	7	0
Ulster	423	27	42	2,709	334	174	36	549	25	5
<b>South Eastern HSC Trust</b>	<b>595</b>	<b>47</b>	<b>63</b>	<b>3,468</b>	<b>399</b>	<b>266</b>	<b>53</b>	<b>860</b>	<b>40</b>	<b>5</b>
Craigavon Area	452	25	31	7,337	726	281	32	401	14	0
Daisy Hill	61	3	7	332	19	17	4	20	2	0
South Tyrone	59	3	5	2,748	243	178	1	111	6	0
<b>Southern HSC Trust</b>	<b>572</b>	<b>31</b>	<b>43</b>	<b>10,417</b>	<b>988</b>	<b>476</b>	<b>37</b>	<b>532</b>	<b>22</b>	<b>0</b>
Altnagelvin Area	256	22	24	4,191	559	288	20	957	17	23
Erne	11	0	2	520	35	64	1	326	5	0
Tyrone County	75	5	3	786	35	43	12	169	8	0
<b>Western HSC Trust</b>	<b>342</b>	<b>27</b>	<b>29</b>	<b>5,497</b>	<b>629</b>	<b>395</b>	<b>33</b>	<b>1,452</b>	<b>30</b>	<b>23</b>
<b>Northern Ireland</b>	<b>3,475</b>	<b>328</b>	<b>355</b>	<b>48,538</b>	<b>5,013</b>	<b>3,523</b>	<b>246</b>	<b>4,593</b>	<b>191</b>	<b>31</b>

Source: QOAR (Part 1)

Note: DNA = Did not attend, CNA = Could not attend

**Table 30: Specialty 311 - Activity by HSC Hospital / Trust for Clinical Genetics, 2009/10**

Hospital / Trust	Attendances						Hospital Cancellations		Patient	Private
	Seen	New DNA	CNA	Seen	Review DNA	CNA	New	Review	Died	Patient Attendances
Belfast City	2,734	238	0	655	92	0	0	0	0	0
Royal Victoria	1	0	0	6	0	0	0	0	0	0
<b>Belfast HSC Trust</b>	<b>2,735</b>	<b>238</b>	<b>0</b>	<b>661</b>	<b>92</b>	<b>0</b>	<b>0</b>	<b>0</b>	<b>0</b>	<b>0</b>
<b>Northern Ireland</b>	<b>2,735</b>	<b>238</b>	<b>0</b>	<b>661</b>	<b>92</b>	<b>0</b>	<b>0</b>	<b>0</b>	<b>0</b>	<b>0</b>

Source: QOAR (Part 1)

Note: DNA = Did not attend, CNA = Could not attend

**Table 31: Specialty 314 - Activity by HSC Hospital / Trust for Rehabilitation, 2009/10**

Hospital / Trust	Attendances						Hospital Cancellations	Patient Died	Private Patient Attendances	
	New			Review						
	Seen	DNA	CNA	Seen	DNA	CNA	New	Review		
Musgrave Park	979	52	52	8,676	593	1,176	216	557	7	0
Royal Victoria	96	12	3	217	76	42	6	28	1	0
<b>Belfast HSC Trust</b>	<b>1,075</b>	<b>64</b>	<b>55</b>	<b>8,893</b>	<b>669</b>	<b>1,218</b>	<b>222</b>	<b>585</b>	<b>8</b>	<b>0</b>
<b>Northern Ireland</b>	<b>1,075</b>	<b>64</b>	<b>55</b>	<b>8,893</b>	<b>669</b>	<b>1,218</b>	<b>222</b>	<b>585</b>	<b>8</b>	<b>0</b>

Source: QOAR (Part 1)

Note: DNA = Did not attend, CNA = Could not attend



**Table 32: Specialty 315 - Activity by HSC Hospital / Trust for Palliative Medicine, 2009/10**

Hospital / Trust	Attendances						Hospital Cancellations		Patient	Private
	Seen	<u>New</u> DNA	CNA	Seen	<u>Review</u> DNA	CNA	New	Review	Died	Patient Attendances
Belfast City	0	0	0	146	0	0	0	0	0	0
Cancer Centre	70	15	10	625	50	80	18	81	7	0
<b>Belfast HSC Trust</b>	<b>70</b>	<b>15</b>	<b>10</b>	<b>771</b>	<b>50</b>	<b>80</b>	<b>18</b>	<b>81</b>	<b>7</b>	<b>0</b>
Antrim	0	0	0	9	0	0	0	0	0	0
Mid Ulster	0	0	0	8	0	0	0	0	0	0
Whiteabbey	0	0	0	1	0	0	0	0	0	0
<b>Northern HSC Trust</b>	<b>0</b>	<b>0</b>	<b>0</b>	<b>18</b>	<b>0</b>	<b>0</b>	<b>0</b>	<b>0</b>	<b>0</b>	<b>0</b>
Ulster	21	0	0	9	0	1	2	3	0	0
<b>South Eastern HSC Trust</b>	<b>21</b>	<b>0</b>	<b>0</b>	<b>9</b>	<b>0</b>	<b>1</b>	<b>2</b>	<b>3</b>	<b>0</b>	<b>0</b>
Craigavon Area	44	1	11	196	28	41	0	12	18	0
South Tyrone	25	2	5	117	10	27	4	8	8	0
<b>Southern HSC Trust</b>	<b>69</b>	<b>3</b>	<b>16</b>	<b>313</b>	<b>38</b>	<b>68</b>	<b>4</b>	<b>20</b>	<b>26</b>	<b>0</b>
Altnagelvin Area	157	10	25	313	23	52	23	52	1	0
Erne	194	6	1	1,795	10	15	0	1	1	0
Tyrone County	80	0	0	1,741	1	0	0	0	0	0
<b>Western HSC Trust</b>	<b>431</b>	<b>16</b>	<b>26</b>	<b>3,849</b>	<b>34</b>	<b>67</b>	<b>23</b>	<b>53</b>	<b>2</b>	<b>0</b>
<b>Northern Ireland</b>	<b>591</b>	<b>34</b>	<b>52</b>	<b>4,960</b>	<b>122</b>	<b>216</b>	<b>47</b>	<b>157</b>	<b>35</b>	<b>0</b>

Source: QOAR (Part 1)

Note: DNA = Did not attend, CNA = Could not attend

**Table 33: Specialty 320 - Activity by HSC Hospital / Trust for Cardiology, 2009/10<sup>R</sup>**

Hospital / Trust	Attendances						Hospital Cancellations		Patient	Private
	Seen	New DNA	CNA	Seen	Review DNA	CNA	New	Review	Died	Patient Attendances
Belfast City	2,234	98	248	4,362	370	757	271	474	33	0
Mater Infirmorum	728	83	101	1,847	370	205	60	264	38	6
RBHSC	1,237	53	109	2,530	325	260	50	1,798	3	0
Royal Victoria	3,809	180	242	8,282	1,746	1,081	143	2,154	115	78
<b>Belfast HSC Trust</b>	<b>8,008</b>	<b>414</b>	<b>700</b>	<b>17,021</b>	<b>2,811</b>	<b>2,303</b>	<b>524</b>	<b>4,690</b>	<b>189</b>	<b>84</b>
Antrim	1,080	46	144	2,848	319	341	147	381	15	0
Causeway	224	12	16	1,000	134	101	28	443	16	0
Waveney	256	5	36	467	37	81	22	115	1	0
Whiteabbey	387	15	73	1,413	149	267	28	256	8	0
<b>Northern HSC Trust</b>	<b>1,947</b>	<b>78</b>	<b>269</b>	<b>5,728</b>	<b>639</b>	<b>790</b>	<b>225</b>	<b>1,195</b>	<b>40</b>	<b>0</b>
Ards	255	5	26	497	123	49	17	254	18	0
Bangor	196	16	28	252	55	22	24	100	13	0
Ulster	2,651	86	176	2,305	467	248	89	848	43	0
<b>South Eastern HSC Trust</b>	<b>3,102</b>	<b>107</b>	<b>230</b>	<b>3,054</b>	<b>645</b>	<b>319</b>	<b>130</b>	<b>1,202</b>	<b>74</b>	<b>0</b>
Armagh Community	135	7	6	90	8	7	13	8	3	0
Banbridge	100	3	17	122	7	9	1	5	0	0
Craigavon Area	2,032	112	139	1,212	51	60	66	92	2	0
Daisy Hill	597	45	58	517	62	43	32	72	5	0
South Tyrone	70	0	9	145	5	9	7	19	0	0
<b>Southern HSC Trust</b>	<b>2,934</b>	<b>167</b>	<b>229</b>	<b>2,086</b>	<b>133</b>	<b>128</b>	<b>119</b>	<b>196</b>	<b>10</b>	<b>0</b>
Altnagelvin Area	775	50	70	4,014	337	383	103	818	16	0
Roe Valley	116	12	12	155	16	19	8	36	1	0
Erne	364	22	55	1,710	175	244	38	995	16	0
Tyrone County	340	16	33	980	93	87	26	740	11	0
<b>Western HSC Trust</b>	<b>1,595</b>	<b>100</b>	<b>170</b>	<b>6,859</b>	<b>621</b>	<b>733</b>	<b>175</b>	<b>2,589</b>	<b>44</b>	<b>0</b>
<b>Northern Ireland</b>	<b>17,586</b>	<b>866</b>	<b>1,598</b>	<b>34,748</b>	<b>4,849</b>	<b>4,273</b>	<b>1,173</b>	<b>9,872</b>	<b>357</b>	<b>84</b>

Source: QOAR (Part 1)

Note: DNA = Did not attend, CNA = Could not attend, <sup>R</sup> Data have been revised

**Table 34: Specialty 330 - Activity by HSC Hospital / Trust for Dermatology, 2009/10<sup>R</sup>**

Hospital / Trust	Attendances						Hospital Cancellations		Patient	Private
	Seen	New DNA	CNA	Seen	Review DNA	CNA	New	Review	Died	Patient Attendances
Belfast City	3,471	252	491	8,475	1,020	1,619	121	676	35	56
Mater Infirmorum	408	53	38	504	126	80	7	58	1	0
RBHSC	892	80	118	1,298	220	287	66	288	0	0
Royal Victoria	3,793	240	402	6,458	914	1,201	79	430	12	66
<b>Belfast HSC Trust</b>	<b>8,564</b>	<b>625</b>	<b>1,049</b>	<b>16,735</b>	<b>2,280</b>	<b>3,187</b>	<b>273</b>	<b>1,452</b>	<b>48</b>	<b>122</b>
Antrim	1,114	119	226	1,897	222	338	35	156	0	0
Causeway	1,324	53	134	2,566	252	324	41	557	3	31
Mid Ulster	457	23	71	1,274	185	195	5	152	1	3
Moyle	200	15	30	427	49	55	10	33	0	0
Waveney	884	75	224	1,481	164	270	25	158	7	1
Whiteabbey	834	47	133	1,221	151	220	15	68	6	1
<b>Northern HSC Trust</b>	<b>4,813</b>	<b>332</b>	<b>818</b>	<b>8,866</b>	<b>1,023</b>	<b>1,402</b>	<b>131</b>	<b>1,124</b>	<b>17</b>	<b>36</b>
Ards	381	20	46	320	89	58	16	101	1	0
Bangor	609	21	75	1,375	193	211	69	291	7	0
Downe	395	26	57	639	77	85	79	145	0	0
Lagan Valley	552	31	61	853	94	75	82	42	3	0
Ulster	2,377	192	314	2,784	493	402	156	1,020	22	0
<b>South Eastern HSC Trust</b>	<b>4,314</b>	<b>290</b>	<b>553</b>	<b>5,971</b>	<b>946</b>	<b>831</b>	<b>402</b>	<b>1,599</b>	<b>33</b>	<b>0</b>
Armagh Community	546	27	47	960	125	74	34	98	1	0
Craigavon Area	3,596	185	363	4,129	320	480	126	216	5	6
Daisy Hill	2,306	124	215	2,318	268	283	55	110	5	2
South Tyrone	1,143	53	110	1,555	131	146	39	74	2	0
<b>Southern HSC Trust</b>	<b>7,591</b>	<b>389</b>	<b>735</b>	<b>8,962</b>	<b>844</b>	<b>983</b>	<b>254</b>	<b>498</b>	<b>13</b>	<b>8</b>

**Table 34: continued**

<b>Hospital / Trust</b>	<b>Attendances</b>						<b>Hospital Cancellations</b>		<b>Patient</b>	<b>Private</b>
	<b>Seen</b>	<b><u>New</u> DNA</b>	<b>CNA</b>	<b>Seen</b>	<b><u>Review</u> DNA</b>	<b>CNA</b>	<b>New</b>	<b>Review</b>	<b>Died</b>	<b>Patient Attendances</b>
Altnagelvin Area	3,026	147	335	3,555	394	523	122	374	2	0
Roe Valley	428	36	59	362	49	36	33	61	1	0
Erne	1,667	183	184	586	25	93	73	185	0	554
Tyrone County	916	40	124	968	103	145	29	78	2	0
<b>Western HSC Trust</b>	<b>6,037</b>	<b>406</b>	<b>702</b>	<b>5,471</b>	<b>571</b>	<b>797</b>	<b>257</b>	<b>698</b>	<b>5</b>	<b>554</b>
<b>Northern Ireland</b>	<b>31,319</b>	<b>2,042</b>	<b>3,857</b>	<b>46,005</b>	<b>5,664</b>	<b>7,200</b>	<b>1,317</b>	<b>5,371</b>	<b>116</b>	<b>720</b>

Source: QOAR (Part 1)

Note: DNA = Did not attend, CNA = Could not attend, <sup>R</sup> Data have been revised

**Table 35: Specialty 340 - Activity by HSC Hospital / Trust for Thoracic Medicine, 2009/10<sup>R</sup>**

Hospital / Trust	Attendances						Hospital Cancellations		Patient Died	Private Patient Attendances
	Seen	New DNA	CNA	Seen	Review DNA	CNA	New	Review		
Belfast City	1,903	139	261	7,547	923	1,324	139	858	55	33
Royal Victoria	579	37	59	1,554	317	286	14	109	14	0
<b>Belfast HSC Trust</b>	<b>2,482</b>	<b>176</b>	<b>320</b>	<b>9,101</b>	<b>1,240</b>	<b>1,610</b>	<b>153</b>	<b>967</b>	<b>69</b>	<b>33</b>
Ards	182	7	17	221	101	17	19	335	19	0
Bangor	178	8	22	377	104	36	16	120	11	0
Downe	125	9	13	239	32	24	15	23	2	0
Lagan Valley	348	21	23	561	74	48	30	109	13	0
Ulster	273	25	23	543	157	35	16	138	26	0
<b>South Eastern HSC Trust</b>	<b>1,106</b>	<b>70</b>	<b>98</b>	<b>1,941</b>	<b>468</b>	<b>160</b>	<b>96</b>	<b>725</b>	<b>71</b>	<b>0</b>
Craigavon Area	846	59	75	1,480	149	126	21	46	8	0
South Tyrone	186	5	15	570	39	52	5	14	5	0
<b>Southern HSC Trust</b>	<b>1,032</b>	<b>64</b>	<b>90</b>	<b>2,050</b>	<b>188</b>	<b>178</b>	<b>26</b>	<b>60</b>	<b>13</b>	<b>0</b>
<b>Northern Ireland</b>	<b>4,620</b>	<b>310</b>	<b>508</b>	<b>13,092</b>	<b>1,896</b>	<b>1,948</b>	<b>275</b>	<b>1,752</b>	<b>153</b>	<b>33</b>

Source: QOAR (Part 1)

Note: DNA = Did not attend, CNA = Could not attend, <sup>R</sup> Data have been revised

**Table 36: Specialty 360 - Activity by HSC Hospital / Trust for Genito-Urinary Medicine, 2009/10<sup>7</sup>**

Hospital / Trust	Attendances						Hospital Cancellations		Patient	Private
	Seen	<u>New</u> DNA	CNA	Seen	<u>Review</u> DNA	CNA	New	Review	Died	Patient Attendances
Royal Victoria	11,243	301	--	5,891	431	--	--	--	0	0
<b>Belfast HSC Trust</b>	<b>11,243</b>	<b>301</b>	--	<b>5,891</b>	<b>431</b>	--	--	--	<b>0</b>	<b>0</b>
Causeway	1,678	0	--	253	0	--	--	--	0	0
<b>Northern HSC Trust</b>	<b>1,678</b>	<b>0</b>	--	<b>253</b>	<b>0</b>	--	--	--	<b>0</b>	<b>0</b>
Daisy Hill	1,370	0	--	633	0	--	--	--	0	0
<b>Southern HSC Trust</b>	<b>1,370</b>	<b>0</b>	--	<b>633</b>	<b>0</b>	--	--	--	<b>0</b>	<b>0</b>
Altnagelvin Area	2,934	345	--	1,925	694	--	--	--	0	0
<b>Western HSC Trust</b>	<b>2,934</b>	<b>345</b>	--	<b>1,925</b>	<b>694</b>	--	--	--	<b>0</b>	<b>0</b>
<b>Northern Ireland</b>	<b>17,225</b>	<b>646</b>	--	<b>8,702</b>	<b>1,125</b>	--	--	--	<b>0</b>	<b>0</b>

Source: QOAR (Part 1)

Note: DNA = Did not attend, CNA = Could not attend

<sup>7</sup> Refer to Explanatory Notes Point 4

**Table 37: Specialty 361 - Activity by HSC Hospital / Trust for Nephrology, 2009/10<sup>R</sup>**

Hospital / Trust	Attendances						Hospital Cancellations		Patient	Private
	Seen	New DNA	CNA	Seen	Review DNA	CNA	New	Review	Died	Patient Attendances
Belfast City	810	73	154	7,008	816	888	167	1,321	42	0
RBHSC	307	18	30	2,012	288	320	4	470	0	0
Royal Victoria	10	2	1	128	33	15	1	6	0	0
<b>Belfast HSC Trust</b>	<b>1,127</b>	<b>93</b>	<b>185</b>	<b>9,148</b>	<b>1,137</b>	<b>1,223</b>	<b>172</b>	<b>1,797</b>	<b>42</b>	<b>0</b>
Antrim	464	34	82	3,338	379	475	66	579	26	2
<b>Northern HSC Trust</b>	<b>464</b>	<b>34</b>	<b>82</b>	<b>3,338</b>	<b>379</b>	<b>475</b>	<b>66</b>	<b>579</b>	<b>26</b>	<b>2</b>
Ulster	330	31	29	1,115	163	89	36	151	20	0
<b>South Eastern HSC Trust</b>	<b>330</b>	<b>31</b>	<b>29</b>	<b>1,115</b>	<b>163</b>	<b>89</b>	<b>36</b>	<b>151</b>	<b>20</b>	<b>0</b>
Daisy Hill	143	8	13	1,193	77	48	27	274	5	0
South Tyrone	17	7	2	137	19	7	0	30	1	0
<b>Southern HSC Trust</b>	<b>160</b>	<b>15</b>	<b>15</b>	<b>1,330</b>	<b>96</b>	<b>55</b>	<b>27</b>	<b>304</b>	<b>6</b>	<b>0</b>
Altnagelvin Area	162	15	22	1,463	162	151	2	174	8	0
Erne	11	1	4	43	10	9	11	53	1	0
Tyrone County	13	3	2	274	23	72	8	220	8	0
<b>Western HSC Trust</b>	<b>186</b>	<b>19</b>	<b>28</b>	<b>1,780</b>	<b>195</b>	<b>232</b>	<b>21</b>	<b>447</b>	<b>17</b>	<b>0</b>
<b>Northern Ireland</b>	<b>2,267</b>	<b>192</b>	<b>339</b>	<b>16,711</b>	<b>1,970</b>	<b>2,074</b>	<b>322</b>	<b>3,278</b>	<b>111</b>	<b>2</b>

Source: QOAR (Part 1)

Note: DNA = Did not attend, CNA = Could not attend, <sup>R</sup> Data have been revised

**Table 38: Specialty 370 - Activity by HSC Hospital / Trust for Medical Oncology, 2009/10<sup>R</sup>**

Hospital / Trust	Attendances						Hospital Cancellations		Patient	Private
	Seen	New DNA	CNA	Seen	Review DNA	CNA	New	Review	Died	Patient Attendances
Belfast City	153	4	16	1,085	73	143	13	708	23	1
Cancer Centre	839	50	40	7,713	334	412	54	1,497	114	1
RBHSC	19	1	1	1,264	368	51	0	23	1	0
<b>Belfast HSC Trust</b>	<b>1,011</b>	<b>55</b>	<b>57</b>	<b>10,062</b>	<b>775</b>	<b>606</b>	<b>67</b>	<b>2,228</b>	<b>138</b>	<b>2</b>
Antrim	0	0	0	1,257	0	0	0	0	0	0
<b>Northern HSC Trust</b>	<b>0</b>	<b>0</b>	<b>0</b>	<b>1,257</b>	<b>0</b>	<b>0</b>	<b>0</b>	<b>0</b>	<b>0</b>	<b>0</b>
<b>Northern Ireland</b>	<b>1,011</b>	<b>55</b>	<b>57</b>	<b>11,319</b>	<b>775</b>	<b>606</b>	<b>67</b>	<b>2,228</b>	<b>138</b>	<b>2</b>

Source: QOAR (Part 1)

Note: DNA = Did not attend, CNA = Could not attend, <sup>R</sup> Data have been revised



**Table 39: Specialty 400 - Activity by HSC Hospital / Trust for Neurology, 2009/10<sup>R</sup>**

Hospital / Trust	Attendances						Hospital Cancellations		Patient	Private
	Seen	New DNA	CNA	Seen	Review DNA	CNA	New	Review	Died	Patient Attendances
Belfast City	1,485	119	235	6,327	641	1,287	119	371	16	0
Royal Victoria	4,296	304	539	6,604	1,380	1,086	102	1,714	37	0
<b>Belfast HSC Trust</b>	<b>5,781</b>	<b>423</b>	<b>774</b>	<b>12,931</b>	<b>2,021</b>	<b>2,373</b>	<b>221</b>	<b>2,085</b>	<b>53</b>	<b>0</b>
Antrim	678	35	94	776	94	140	27	74	7	0
Causeway	302	19	50	1,043	199	152	22	287	10	0
Mid Ulster	183	6	28	286	40	38	1	10	1	0
<b>Northern HSC Trust</b>	<b>1,163</b>	<b>60</b>	<b>172</b>	<b>2,105</b>	<b>333</b>	<b>330</b>	<b>50</b>	<b>371</b>	<b>18</b>	<b>0</b>
Ulster	306	22	23	604	114	68	6	128	10	0
<b>South Eastern HSC Trust</b>	<b>306</b>	<b>22</b>	<b>23</b>	<b>604</b>	<b>114</b>	<b>68</b>	<b>6</b>	<b>128</b>	<b>10</b>	<b>0</b>
Banbridge	132	13	25	234	17	24	2	11	1	0
Craigavon Area	1,488	95	110	1,689	139	142	24	69	1	0
Daisy Hill	401	29	49	595	45	77	23	41	2	0
South Tyrone	131	9	14	228	26	18	4	9	1	0
<b>Southern HSC Trust</b>	<b>2,152</b>	<b>146</b>	<b>198</b>	<b>2,746</b>	<b>227</b>	<b>261</b>	<b>53</b>	<b>130</b>	<b>5</b>	<b>0</b>
Altnagelvin Area	793	46	62	1,858	149	260	60	155	4	0
Erne	493	69	72	233	29	36	17	272	2	0
Tyrone County	234	38	32	318	38	55	12	328	2	0
<b>Western HSC Trust</b>	<b>1,520</b>	<b>153</b>	<b>166</b>	<b>2,409</b>	<b>216</b>	<b>351</b>	<b>89</b>	<b>755</b>	<b>8</b>	<b>0</b>
<b>Northern Ireland</b>	<b>10,922</b>	<b>804</b>	<b>1,333</b>	<b>20,795</b>	<b>2,911</b>	<b>3,383</b>	<b>419</b>	<b>3,469</b>	<b>94</b>	<b>0</b>

Source: QOAR (Part 1)

Note: DNA = Did not attend, CNA = Could not attend, <sup>R</sup> Data have been revised

**Table 40: Specialty 401 - Activity by HSC Hospital / Trust for Clinical Neuro-Physiology, 2009/10<sup>R</sup>**

Hospital / Trust	Attendances						Hospital Cancellations		Patient	Private
	Seen	New		Seen	Review		New	Review	Died	Patient
		DNA	CNA		DNA	CNA				
Royal Victoria	1,017	55	137	0	0	0	81	0	0	0
<b>Belfast HSC Trust</b>	<b>1,017</b>	<b>55</b>	<b>137</b>	<b>0</b>	<b>0</b>	<b>0</b>	<b>81</b>	<b>0</b>	<b>0</b>	<b>0</b>
<b>Northern Ireland</b>	<b>1,017</b>	<b>55</b>	<b>137</b>	<b>0</b>	<b>0</b>	<b>0</b>	<b>81</b>	<b>0</b>	<b>0</b>	<b>0</b>

Source: QOAR (Part 1)

Note: DNA = Did not attend, CNA = Could not attend, <sup>R</sup> Data have been revised

**Table 41: Specialty 410 - Activity by HSC Hospital / Trust for Rheumatology, 2009/10<sup>R</sup>**

Hospital / Trust	Attendances						Hospital Cancellations		Patient	Private
	Seen	New DNA	CNA	Seen	Review DNA	CNA	New	Review	Died	Patient Attendances
Belfast City	1,165	60	200	3,884	296	811	140	429	12	0
Musgrave Park	196	18	1	905	104	50	12	12	0	1
Royal Victoria	1,835	100	252	4,448	924	768	79	1,723	34	0
<b>Belfast HSC Trust</b>	<b>3,196</b>	<b>178</b>	<b>453</b>	<b>9,237</b>	<b>1,324</b>	<b>1,629</b>	<b>231</b>	<b>2,164</b>	<b>46</b>	<b>1</b>
Antrim	1,312	42	193	3,895	303	459	114	525	3	3
Causeway	328	15	36	1,884	180	198	14	538	10	0
Moyle	37	1	5	85	9	12	0	10	0	0
Mid Ulster	0	0	0	1	0	0	0	0	0	0
Waveney	212	5	23	977	87	166	4	208	6	0
Whiteabbey	86	2	5	423	63	58	8	112	0	0
<b>Northern HSC Trust</b>	<b>1,975</b>	<b>65</b>	<b>262</b>	<b>7,265</b>	<b>642</b>	<b>893</b>	<b>140</b>	<b>1,393</b>	<b>19</b>	<b>3</b>
Downe	122	10	21	482	24	41	31	108	2	0
Lagan Valley	319	7	25	784	44	89	16	94	0	0
<b>South Eastern HSC Trust</b>	<b>441</b>	<b>17</b>	<b>46</b>	<b>1,266</b>	<b>68</b>	<b>130</b>	<b>47</b>	<b>202</b>	<b>2</b>	<b>0</b>
Armagh Community	13	2	1	0	0	0	0	0	0	0
Banbridge	833	51	99	1,231	66	108	38	48	0	0
Craigavon Area	477	22	30	1,147	63	82	8	48	1	0
South Tyrone	276	19	29	440	19	36	17	59	0	0
<b>Southern HSC Trust</b>	<b>1,599</b>	<b>94</b>	<b>159</b>	<b>2,818</b>	<b>148</b>	<b>226</b>	<b>63</b>	<b>155</b>	<b>1</b>	<b>0</b>
Altnagelvin Area	831	41	127	2,369	104	348	71	204	1	0
Erne	271	15	40	634	44	55	26	512	0	0
Tyrone County	74	3	15	372	25	54	1	258	3	0
<b>Western HSC Trust</b>	<b>1,176</b>	<b>59</b>	<b>182</b>	<b>3,375</b>	<b>173</b>	<b>457</b>	<b>98</b>	<b>974</b>	<b>4</b>	<b>0</b>
<b>Northern Ireland</b>	<b>8,387</b>	<b>413</b>	<b>1,102</b>	<b>23,961</b>	<b>2,355</b>	<b>3,335</b>	<b>579</b>	<b>4,888</b>	<b>72</b>	<b>4</b>

Source: QOAR (Part 1)

Note: DNA = Did not attend, CNA = Could not attend, <sup>R</sup> Data have been revised

**Table 42: Specialty 420 - Activity by HSC Hospital / Trust for Paediatrics, 2009/10<sup>R</sup>**

Hospital / Trust	Attendances						Hospital Cancellations		Patient	Private
	Seen	New DNA	CNA	Seen	Review DNA	CNA	New	Review	Died	Patient Attendances
Muckamore Abbey	362	57	30	1,519	308	319	0	0	0	0
RBHSC	3,747	339	461	8,901	1,778	1,541	206	1,820	9	0
Royal Maternity	8	3	0	1,091	351	48	1	191	0	0
<b>Belfast HSC Trust</b>	<b>4,117</b>	<b>399</b>	<b>491</b>	<b>11,511</b>	<b>2,437</b>	<b>1,908</b>	<b>207</b>	<b>2,011</b>	<b>9</b>	<b>0</b>
Antrim	1,321	142	153	4,876	885	930	116	933	3	11
Causeway	1,053	74	91	3,794	878	406	41	605	0	4
Mid Ulster	577	31	64	813	147	143	34	73	0	13
Moyle	141	3	12	522	179	158	0	54	0	2
Waveney	290	16	28	586	117	108	15	183	0	0
Whiteabbey	72	4	11	317	85	42	8	103	1	0
<b>Northern HSC Trust</b>	<b>3,454</b>	<b>270</b>	<b>359</b>	<b>10,908</b>	<b>2,291</b>	<b>1,787</b>	<b>214</b>	<b>1,951</b>	<b>4</b>	<b>30</b>
Ards	164	15	6	759	116	107	6	18	0	0
Downe	193	19	20	203	23	29	21	18	0	0
Lagan Valley	186	16	22	242	32	38	32	70	0	0
Ulster	1,826	152	150	3,937	1,049	510	116	1,597	1	0
<b>South Eastern HSC Trust</b>	<b>2,369</b>	<b>202</b>	<b>198</b>	<b>5,141</b>	<b>1,220</b>	<b>684</b>	<b>175</b>	<b>1,703</b>	<b>1</b>	<b>0</b>
Armagh Community	502	55	37	1,425	381	84	20	70	0	0
Banbridge	151	9	22	276	53	22	9	13	0	0
Bluestone	354	43	11	2	0	0	11	1	0	0
Craigavon Area	930	78	82	2,571	357	255	59	346	1	0
Daisy Hill	697	58	85	2,736	340	366	47	361	2	0
South Tyrone	423	36	29	1,055	128	82	30	94	0	0
<b>Southern HSC Trust</b>	<b>3,057</b>	<b>279</b>	<b>266</b>	<b>8,065</b>	<b>1,259</b>	<b>809</b>	<b>176</b>	<b>885</b>	<b>3</b>	<b>0</b>

**Table 42: continued**

<b>Hospital / Trust</b>	<b>Attendances</b>						<b>Hospital Cancellations</b>		<b>Patient Died</b>	<b>Private Patient Attendances</b>
	<b>Seen</b>	<b>New DNA</b>	<b>CNA</b>	<b>Seen</b>	<b>Review DNA</b>	<b>CNA</b>	<b>New</b>	<b>Review</b>		
Altnagelvin Area	2,072	108	134	5,154	574	562	279	1,187	1	0
Erne	633	53	59	2,613	385	440	74	1,698	2	0
Gransha	153	30	21	378	49	93	0	0	0	0
Roe Valley	81	9	13	87	16	12	12	17	0	0
Tyrone County	364	98	11	1,873	756	26	25	1,155	2	0
<b>Western HSC Trust</b>	<b>3,303</b>	<b>298</b>	<b>238</b>	<b>10,105</b>	<b>1,780</b>	<b>1,133</b>	<b>390</b>	<b>4,057</b>	<b>5</b>	<b>0</b>
<b>Northern Ireland</b>	<b>16,300</b>	<b>1,448</b>	<b>1,552</b>	<b>45,730</b>	<b>8,987</b>	<b>6,321</b>	<b>1,162</b>	<b>10,607</b>	<b>22</b>	<b>30</b>

Source: QOAR (Part 1)

Note: DNA = Did not attend, CNA = Could not attend, <sup>R</sup> Data have been revised

**Table 43: Specialty 421 - Activity by HSC Hospital / Trust for Paediatric Neurology, 2009/10<sup>R</sup>**

Hospital / Trust	Attendances						Hospital Cancellations		Patient Died	Private Patient Attendances
	Seen	New DNA	CNA	Seen	Review DNA	CNA	New	Review		
Belfast City	3	0	0	12	5	1	0	0	0	0
RBHSC	280	21	26	1,044	127	175	17	379	3	0
<b>Belfast HSC Trust</b>	<b>283</b>	<b>21</b>	<b>26</b>	<b>1,056</b>	<b>132</b>	<b>176</b>	<b>17</b>	<b>379</b>	<b>3</b>	<b>0</b>
Lurgan	0	0	0	63	8	5	0	13	0	0
<b>Southern HSC Trust</b>	<b>0</b>	<b>0</b>	<b>0</b>	<b>63</b>	<b>8</b>	<b>5</b>	<b>0</b>	<b>13</b>	<b>0</b>	<b>0</b>
Altnagelvin Area	0	0	0	33	2	6	0	4	0	0
<b>Western HSC Trust</b>	<b>0</b>	<b>0</b>	<b>0</b>	<b>33</b>	<b>2</b>	<b>6</b>	<b>0</b>	<b>4</b>	<b>0</b>	<b>0</b>
<b>Northern Ireland</b>	<b>283</b>	<b>21</b>	<b>26</b>	<b>1,152</b>	<b>142</b>	<b>187</b>	<b>17</b>	<b>396</b>	<b>3</b>	<b>0</b>

Source: QOAR (Part 1)

Note: DNA = Did not attend, CNA = Could not attend, <sup>R</sup> Data have been revised

**Table 44: Specialty 430 - Activity by HSC Hospital / Trust for Geriatric Medicine, 2009/10**

Hospital / Trust	Attendances						Hospital Cancellations		Patient	Private
	Seen	New DNA	CNA	Seen	Review DNA	CNA	New	Review	Died	Patient Attendances
Belfast City	3,124	188	569	3,346	468	885	181	306	45	1
Musgrave Park	682	135	111	116	25	0	6	0	0	0
Royal Victoria	221	24	24	866	201	106	10	181	22	0
<b>Belfast HSC Trust</b>	<b>4,027</b>	<b>347</b>	<b>704</b>	<b>4,328</b>	<b>694</b>	<b>991</b>	<b>197</b>	<b>487</b>	<b>67</b>	<b>1</b>
Antrim	123	3	20	227	17	30	10	58	4	0
Waveney	90	1	10	232	21	48	6	21	3	0
Whiteabbey	201	14	24	776	137	207	17	133	24	2
<b>Northern HSC Trust</b>	<b>414</b>	<b>18</b>	<b>54</b>	<b>1,235</b>	<b>175</b>	<b>285</b>	<b>33</b>	<b>212</b>	<b>31</b>	<b>2</b>
Lagan Valley	530	53	55	850	50	101	58	173	21	0
Ulster	1,846	136	162	2,018	177	306	202	724	68	19
<b>South Eastern HSC Trust</b>	<b>2,376</b>	<b>189</b>	<b>217</b>	<b>2,868</b>	<b>227</b>	<b>407</b>	<b>260</b>	<b>897</b>	<b>89</b>	<b>19</b>
Craigavon Area	418	26	32	421	81	49	21	85	4	0
Lurgan	435	74	52	1,308	334	108	19	422	22	0
Mullinure	171	48	17	395	131	36	30	255	11	0
South Tyrone	142	52	8	536	145	13	15	214	3	0
<b>Southern HSC Trust</b>	<b>1,166</b>	<b>200</b>	<b>109</b>	<b>2,660</b>	<b>691</b>	<b>206</b>	<b>85</b>	<b>976</b>	<b>40</b>	<b>0</b>
Altnagelvin Area	143	39	8	859	197	60	24	329	33	0
Erne	301	36	47	1,092	133	239	107	1,036	22	0
Roe Valley	27	4	3	192	22	19	3	36	1	0
Tyrone County	171	17	31	367	61	30	12	29	11	0
<b>Western HSC Trust</b>	<b>642</b>	<b>96</b>	<b>89</b>	<b>2,510</b>	<b>413</b>	<b>348</b>	<b>146</b>	<b>1,430</b>	<b>67</b>	<b>0</b>
<b>Northern Ireland</b>	<b>8,625</b>	<b>850</b>	<b>1,173</b>	<b>13,601</b>	<b>2,200</b>	<b>2,237</b>	<b>721</b>	<b>4,002</b>	<b>294</b>	<b>22</b>

Source: QOAR (Part 1)

Note: DNA = Did not attend, CNA = Could not attend

**Table 45: Specialty 450 - Activity by HSC Hospital / Trust for Dental Medicine Specialties, 2009/10<sup>R</sup>**

<b>Hospital / Trust</b>	<b>Attendances</b>						<b>Hospital Cancellations</b>		<b>Patient</b>	<b>Private</b>
	<b>Seen</b>	<b><u>New</u> DNA</b>	<b>CNA</b>	<b>Seen</b>	<b><u>Review</u> DNA</b>	<b>CNA</b>	<b>New</b>	<b>Review</b>	<b>Died</b>	<b>Patient Attendances</b>
Royal Victoria	2,019	101	249	3,890	1,136	1,020	55	539	1	8
<b>Belfast HSC Trust</b>	<b>2,019</b>	<b>101</b>	<b>249</b>	<b>3,890</b>	<b>1,136</b>	<b>1,020</b>	<b>55</b>	<b>539</b>	<b>1</b>	<b>8</b>
<b>Northern Ireland</b>	<b>2,019</b>	<b>101</b>	<b>249</b>	<b>3,890</b>	<b>1,136</b>	<b>1,020</b>	<b>55</b>	<b>539</b>	<b>1</b>	<b>8</b>

Source: QOAR (Part 1)

Note: DNA = Did not attend, CNA = Could not attend, <sup>R</sup> Data have been revised



**Table 46: Specialty 502 - Activity by HSC Hospital / Trust for Gynaecology, 2009/10<sup>R</sup>**

Hospital / Trust	Attendances						Hospital Cancellations		Patient	Private
	Seen	New DNA	CNA	Seen	Review DNA	CNA	New	Review	Died	Patient Attendances
Belfast City	2,547	135	480	3,689	407	673	267	710	12	0
Mater Infirmorum	2,889	381	356	3,787	910	429	150	372	4	0
Royal Victoria	5,543	439	912	10,963	1,201	1,687	337	1,145	5	904
<b>Belfast HSC Trust</b>	<b>10,979</b>	<b>955</b>	<b>1,748</b>	<b>18,439</b>	<b>2,518</b>	<b>2,789</b>	<b>754</b>	<b>2,227</b>	<b>21</b>	<b>904</b>
Antrim	1,958	166	421	2,283	308	620	138	198	5	11
Carrickfergus	78	11	21	61	12	15	3	9	0	0
Causeway	2,233	161	493	3,029	537	416	228	636	3	0
Mid Ulster	833	52	193	905	168	194	59	160	1	2
Moyle	402	29	98	525	62	97	17	38	1	0
Waveney	639	50	97	881	104	193	30	212	1	0
Whiteabbey	888	103	160	818	119	236	27	137	1	15
<b>Northern HSC Trust</b>	<b>7,031</b>	<b>572</b>	<b>1,483</b>	<b>8,502</b>	<b>1,310</b>	<b>1,771</b>	<b>502</b>	<b>1,390</b>	<b>12</b>	<b>28</b>
Ards	1,025	85	96	829	198	122	18	193	2	0
Bangor	1,190	74	122	727	209	120	27	126	2	2
Downe	649	55	80	605	90	72	57	58	0	0
Lagan Valley	2,929	195	388	2,671	251	350	170	192	2	0
Ulster	4,042	174	236	2,526	526	449	108	806	2	0
<b>South Eastern HSC Trust</b>	<b>9,835</b>	<b>583</b>	<b>922</b>	<b>7,358</b>	<b>1,274</b>	<b>1,113</b>	<b>380</b>	<b>1,375</b>	<b>8</b>	<b>2</b>
Armagh Community	396	21	35	277	23	28	5	52	0	0
Banbridge	149	17	29	237	13	31	5	23	1	0
Craigavon Area	3,104	208	533	5,009	347	433	156	269	2	10
Daisy Hill	2,084	135	421	3,417	645	922	183	747	6	35
Kilkeel Primary Care Centre	150	9	26	151	12	24	9	45	1	0
South Tyrone	690	59	104	724	65	88	31	39	0	0
<b>Southern HSC Trust</b>	<b>6,573</b>	<b>449</b>	<b>1,148</b>	<b>9,815</b>	<b>1,105</b>	<b>1,526</b>	<b>389</b>	<b>1,175</b>	<b>10</b>	<b>45</b>

**Table 46: continued**

<b>Hospital / Trust</b>	<b>Attendances</b>						<b>Hospital Cancellations</b>		<b>Patient</b>	<b>Private</b>
	<b>Seen</b>	<b>New DNA</b>	<b>CNA</b>	<b>Seen</b>	<b>Review DNA</b>	<b>CNA</b>	<b>New</b>	<b>Review</b>	<b>Died</b>	<b>Patient Attendances</b>
Altnagelvin Area	3,574	241	712	3,820	353	776	343	690	4	0
Erne	2,250	104	241	2,280	177	370	195	1,317	1	11
Roe Valley	539	37	85	584	48	106	32	92	0	0
Tyrone County	1,077	99	217	1,183	231	211	125	709	2	1
<b>Western HSC Trust</b>	<b>7,440</b>	<b>481</b>	<b>1,255</b>	<b>7,867</b>	<b>809</b>	<b>1,463</b>	<b>695</b>	<b>2,808</b>	<b>7</b>	<b>12</b>
<b>Northern Ireland</b>	<b>41,858</b>	<b>3,040</b>	<b>6,556</b>	<b>51,981</b>	<b>7,016</b>	<b>8,662</b>	<b>2,720</b>	<b>8,975</b>	<b>58</b>	<b>991</b>

Source: QOAR (Part 1)

Note: DNA = Did not attend, CNA = Could not attend, <sup>R</sup> Data have been revised

**Table 47: Specialty 510 - Activity by HSC Hospital / Trust for Obstetrics (Ante Natal), 2009/10<sup>R</sup>**

Hospital / Trust	Attendances						Hospital Cancellations		Patient	Private
	Seen	<u>New</u> DNA	CNA	Seen	<u>Review</u> DNA	CNA	New	Review	Died	Patient Attendances
Mater Infirmorum	993	23	12	4,279	541	48	20	143	0	0
Royal Maternity	4,925	402	419	14,559	1,456	677	244	1,126	0	0
<b>Belfast HSC Trust</b>	<b>5,918</b>	<b>425</b>	<b>431</b>	<b>18,838</b>	<b>1,997</b>	<b>725</b>	<b>264</b>	<b>1,269</b>	<b>0</b>	<b>0</b>
Antrim	1,602	43	129	2,904	79	126	105	330	0	3
Causeway	1,559	42	159	7,772	169	201	239	746	1	6
Mid Ulster	1,130	55	109	2,662	124	118	80	620	0	11
Moyle	320	15	53	818	42	41	41	142	0	1
Waveney	804	54	102	1,930	96	98	95	373	0	1
Whiteabbey	220	22	57	473	36	44	48	82	0	9
<b>Northern HSC Trust</b>	<b>5,635</b>	<b>231</b>	<b>609</b>	<b>16,559</b>	<b>546</b>	<b>628</b>	<b>608</b>	<b>2,293</b>	<b>1</b>	<b>31</b>
Downe	48	2	1	591	69	19	3	91	0	0
Lagan Valley	1,834	73	136	2,732	225	126	114	191	0	0
Ulster	3,710	154	227	6,527	240	356	203	1,050	0	0
<b>South Eastern HSC Trust</b>	<b>5,592</b>	<b>229</b>	<b>364</b>	<b>9,850</b>	<b>534</b>	<b>501</b>	<b>320</b>	<b>1,332</b>	<b>0</b>	<b>0</b>
Armagh Community	356	15	42	978	61	109	39	112	0	0
Banbridge	113	7	16	366	22	39	9	26	0	0
Craigavon Area	3,205	72	268	6,866	171	649	121	371	0	0
Daisy Hill	1,691	56	212	6,905	131	645	84	643	1	0
Kilkeel Primary Care Centre	90	2	10	144	3	17	6	23	0	0
South Tyrone	1,029	42	87	2,731	72	288	40	411	0	0
<b>Southern HSC Trust</b>	<b>6,484</b>	<b>194</b>	<b>635</b>	<b>17,990</b>	<b>460</b>	<b>1,747</b>	<b>299</b>	<b>1,586</b>	<b>1</b>	<b>0</b>

**Table 47: continued**

<b>Hospital / Trust</b>	<b>Attendances</b>						<b>Hospital Cancellations</b>		<b>Patient</b>	<b>Private</b>
	<b>Seen</b>	<b><u>New</u> DNA</b>	<b>CNA</b>	<b>Seen</b>	<b><u>Review</u> DNA</b>	<b>CNA</b>	<b>New</b>	<b>Review</b>	<b>Died</b>	<b>Patient Attendances</b>
Altnagelvin Area	3,191	152	212	6,746	236	453	181	803	0	1
Erne	996	32	53	3,771	242	104	150	589	0	10
Roe Valley	357	9	11	719	97	29	5	17	0	0
Tyrone County	548	22	24	1,345	240	30	28	90	0	0
<b>Western HSC Trust</b>	<b>5,092</b>	<b>215</b>	<b>300</b>	<b>12,581</b>	<b>815</b>	<b>616</b>	<b>364</b>	<b>1,499</b>	<b>0</b>	<b>11</b>
<b>Northern Ireland</b>	<b>28,721</b>	<b>1,294</b>	<b>2,339</b>	<b>75,818</b>	<b>4,352</b>	<b>4,217</b>	<b>1,855</b>	<b>7,979</b>	<b>2</b>	<b>42</b>

Source: QOAR (Part 1)

Note: DNA = Did not attend, CNA = Could not attend, <sup>R</sup> Data have been revised

**Table 48: Specialty 520 - Activity by HSC Hospital / Trust for Obstetrics (Post Natal), 2009/10**

Hospital / Trust	Attendances						Hospital Cancellations		Patient	Private
	Seen	<u>New</u> DNA	CNA	Seen	<u>Review</u> DNA	CNA	New	Review	Died	Patient Attendances
Antrim	25	4	9	90	14	30	2	23	0	0
Waveney	0	0	0	7	4	2	0	3	0	0
<b>Northern HSC Trust</b>	<b>25</b>	<b>4</b>	<b>9</b>	<b>97</b>	<b>18</b>	<b>32</b>	<b>2</b>	<b>26</b>	<b>0</b>	<b>0</b>
Daisy Hill	14	3	0	164	50	23	15	21	0	0
Kilkeel Primary Care Centre	1	2	0	8	0	2	0	1	0	0
<b>Southern HSC Trust</b>	<b>15</b>	<b>5</b>	<b>0</b>	<b>172</b>	<b>50</b>	<b>25</b>	<b>15</b>	<b>22</b>	<b>0</b>	<b>0</b>
<b>Northern Ireland</b>	<b>40</b>	<b>9</b>	<b>9</b>	<b>269</b>	<b>68</b>	<b>57</b>	<b>17</b>	<b>48</b>	<b>0</b>	<b>0</b>

Source: QOAR (Part 1)

Note: DNA = Did not attend, CNA = Could not attend

**Table 49: Specialty 700 - Activity by HSC Hospital / Trust for Learning Disability, 2009/10**

Hospital / Trust	Attendances						Hospital Cancellations		Patient Died	Private Patient Attendances
	Seen	<u>New</u> DNA	CNA	Seen	<u>Review</u> DNA	CNA	New	Review		
Muckamore Abbey	240	62	40	2,965	422	500	4	115	5	0
<b>Belfast HSC Trust</b>	<b>240</b>	<b>62</b>	<b>40</b>	<b>2,965</b>	<b>422</b>	<b>500</b>	<b>4</b>	<b>115</b>	<b>5</b>	<b>0</b>
Longstone	101	58	2	946	242	0	5	17	0	0
<b>Southern HSC Trust</b>	<b>101</b>	<b>58</b>	<b>2</b>	<b>946</b>	<b>242</b>	<b>0</b>	<b>5</b>	<b>17</b>	<b>0</b>	<b>0</b>
Lakeview	59	7	1	1,140	81	67	0	0	0	0
<b>Western HSC Trust</b>	<b>59</b>	<b>7</b>	<b>1</b>	<b>1,140</b>	<b>81</b>	<b>67</b>	<b>0</b>	<b>0</b>	<b>0</b>	<b>0</b>
<b>Northern Ireland</b>	<b>400</b>	<b>127</b>	<b>43</b>	<b>5,051</b>	<b>745</b>	<b>567</b>	<b>9</b>	<b>132</b>	<b>5</b>	<b>0</b>

Source: QOAR (Part 1)

Note: DNA = Did not attend, CNA = Could not attend

**Table 50: Specialty 710 - Activity by HSC Hospital / Trust for Mental Illness, 2009/10<sup>8</sup>**

Hospital / Trust	Attendances						Hospital Cancellations		Patient	Private
	Seen	<u>New</u> DNA	CNA	Seen	<u>Review</u> DNA	CNA	New	Review	Died	Patient Attendances
Alexandra Gardens	121	241	5	1,138	517	43	22	401	3	0
Mater Infirmorum	610	265	86	5,903	3,076	501	209	5,086	12	0
Windsor House	211	67	24	4,555	634	298	33	265	3	0
<b>Belfast HSC Trust</b>	<b>942</b>	<b>573</b>	<b>115</b>	<b>11,596</b>	<b>4,227</b>	<b>842</b>	<b>264</b>	<b>5,752</b>	<b>18</b>	<b>0</b>
<b>Northern Ireland</b>	<b>942</b>	<b>573</b>	<b>115</b>	<b>11,596</b>	<b>4,227</b>	<b>842</b>	<b>264</b>	<b>5,752</b>	<b>18</b>	<b>0</b>

Source: QOAR (Part 1)

Note: DNA = Did not attend, CNA = Could not attend

<sup>8</sup> Refer to Explanatory Notes Point 5

**Table 51: Specialty 711 - Activity by HSC Hospital / Trust for Child and Adolescent Psychiatry, 2009/10<sup>8</sup>**

<b>Hospital / Trust</b>	<b>Attendances</b>						<b>Hospital Cancellations</b>		<b>Patient</b>	<b>Private</b>
	<b>Seen</b>	<b><u>New</u> DNA</b>	<b>CNA</b>	<b>Seen</b>	<b><u>Review</u> DNA</b>	<b>CNA</b>	<b>New</b>	<b>Review</b>	<b>Died</b>	<b>Patient Attendances</b>
Beechcroft	500	61	41	6,131	963	1,047	5	217	0	0
<b>Belfast HSC Trust</b>	<b>500</b>	<b>61</b>	<b>41</b>	<b>6,131</b>	<b>963</b>	<b>1,047</b>	<b>5</b>	<b>217</b>	<b>0</b>	<b>0</b>
<b>Northern Ireland</b>	<b>500</b>	<b>61</b>	<b>41</b>	<b>6,131</b>	<b>963</b>	<b>1,047</b>	<b>5</b>	<b>217</b>	<b>0</b>	<b>0</b>

Source: QOAR (Part 1)

Note: DNA = Did not attend, CNA = Could not attend

<sup>8</sup> Refer to Explanatory Notes Point 5



**Table 52: Specialty 713 - Activity by HSC Hospital / Trust for Psychotherapy, 2009/10<sup>8</sup>**

<b>Hospital / Trust</b>	<b>Attendances</b>						<b>Hospital Cancellations</b>		<b>Patient</b>	<b>Private</b>
	<b>Seen</b>	<b><u>New</u></b>	<b>CNA</b>	<b>Seen</b>	<b><u>Review</u></b>	<b>CNA</b>	<b>New</b>	<b>Review</b>	<b>Died</b>	<b>Patient</b>
Windsor House	92	23	7	1,061	181	69	5	78	0	0
<b>Belfast HSC Trust</b>	<b>92</b>	<b>23</b>	<b>7</b>	<b>1,061</b>	<b>181</b>	<b>69</b>	<b>5</b>	<b>78</b>	<b>0</b>	<b>0</b>
<b>Northern Ireland</b>	<b>92</b>	<b>23</b>	<b>7</b>	<b>1,061</b>	<b>181</b>	<b>69</b>	<b>5</b>	<b>78</b>	<b>0</b>	<b>0</b>

Source: QOAR (Part 1)

Note: DNA = Did not attend, CNA = Could not attend

<sup>8</sup> Refer to Explanatory Notes Point 5

**Table 53: Specialty 715 - Activity by HSC Hospital / Trust for Old Age Psychiatry, 2009/10<sup>8</sup>**

Hospital / Trust	Attendances						Hospital Cancellations		Patient	Private
	Seen	New DNA	CNA	Seen	Review DNA	CNA	New	Review	Died	Patient Attendances
Alexandra Gardens	145	22	23	460	193	105	40	387	7	0
Mater Infirmorum	384	64	48	923	296	167	33	438	40	0
Windsor House	227	17	7	11	0	0	1	0	0	0
<b>Belfast HSC Trust</b>	<b>756</b>	<b>103</b>	<b>78</b>	<b>1,394</b>	<b>489</b>	<b>272</b>	<b>74</b>	<b>825</b>	<b>47</b>	<b>0</b>
Ards	495	108	138	1,799	258	348	208	1,465	44	0
<b>South Eastern HSC Trust</b>	<b>495</b>	<b>108</b>	<b>138</b>	<b>1,799</b>	<b>258</b>	<b>348</b>	<b>208</b>	<b>1,465</b>	<b>44</b>	<b>0</b>
<b>Northern Ireland</b>	<b>1,251</b>	<b>211</b>	<b>216</b>	<b>3,193</b>	<b>747</b>	<b>620</b>	<b>282</b>	<b>2,290</b>	<b>91</b>	<b>0</b>

Source: QOAR (Part 1)

Note: DNA = Did not attend, CNA = Could not attend

<sup>8</sup> Refer to Explanatory Notes Point 5

**Table 54: Specialty 800 - Activity by HSC Hospital / Trust for Clinical Oncology, 2009/10**

Hospital / Trust	Attendances						Hospital Cancellations		Patient	Private
	Seen	New DNA	CNA	Seen	Review DNA	CNA	New	Review	Died	Patient Attendances
Belfast City	167	7	2	1,069	108	67	3	92	5	0
Cancer Centre	3,754	204	229	32,736	2,032	2,467	445	8,213	538	212
<b>Belfast HSC Trust</b>	<b>3,921</b>	<b>211</b>	<b>231</b>	<b>33,805</b>	<b>2,140</b>	<b>2,534</b>	<b>448</b>	<b>8,305</b>	<b>543</b>	<b>212</b>
Antrim	0	0	0	2,766	0	0	0	0	0	0
<b>Northern HSC Trust</b>	<b>0</b>	<b>0</b>	<b>0</b>	<b>2,766</b>	<b>0</b>	<b>0</b>	<b>0</b>	<b>0</b>	<b>0</b>	<b>0</b>
<b>Northern Ireland</b>	<b>3,921</b>	<b>211</b>	<b>231</b>	<b>36,571</b>	<b>2,140</b>	<b>2,534</b>	<b>448</b>	<b>8,305</b>	<b>543</b>	<b>212</b>

Source: QOAR (Part 1)

Note: DNA = Did not attend, CNA = Could not attend

**Table 55: Specialty 810 - Activity by HSC Hospital / Trust for Radiology, 2009/10**

<b>Hospital / Trust</b>	<b>Attendances</b>						<b>Hospital Cancellations</b>		<b>Patient</b>	<b>Private</b>
	<b>Seen</b>	<b><u>New</u> DNA</b>	<b>CNA</b>	<b>Seen</b>	<b><u>Review</u> DNA</b>	<b>CNA</b>	<b>New</b>	<b>Review</b>	<b>Died</b>	<b>Patient Attendances</b>
Cancer Centre	0	0	0	1	0	0	0	0	0	0
<b>Belfast HSC Trust</b>	<b>0</b>	<b>0</b>	<b>0</b>	<b>1</b>	<b>0</b>	<b>0</b>	<b>0</b>	<b>0</b>	<b>0</b>	<b>0</b>
<b>Northern Ireland</b>	<b>0</b>	<b>0</b>	<b>0</b>	<b>1</b>	<b>0</b>	<b>0</b>	<b>0</b>	<b>0</b>	<b>0</b>	<b>0</b>

Source: QOAR (Part 1)

Note: DNA = Did not attend, CNA = Could not attend

**Table 56: Specialty 822 - Activity by HSC Hospital / Trust for Chemical Pathology, 2009/10**

Hospital / Trust	Attendances						Hospital Cancellations		Patient	Private
	Seen	<u>New</u> DNA	CNA	Seen	<u>Review</u> DNA	CNA	New	Review	Died	Patient Attendances
Antrim	106	6	17	346	71	89	5	61	0	0
Causeway	114	18	26	1,330	228	382	25	576	15	0
<b>Northern HSC Trust</b>	<b>220</b>	<b>24</b>	<b>43</b>	<b>1,676</b>	<b>299</b>	<b>471</b>	<b>30</b>	<b>637</b>	<b>15</b>	<b>0</b>
Banbridge	49	2	10	180	13	29	1	2	0	0
Craigavon Area	58	4	13	100	16	29	0	6	0	1
<b>Southern HSC Trust</b>	<b>107</b>	<b>6</b>	<b>23</b>	<b>280</b>	<b>29</b>	<b>58</b>	<b>1</b>	<b>8</b>	<b>0</b>	<b>1</b>
Altnagelvin Area	80	10	11	222	43	70	11	56	0	0
Tyrone County	99	35	2	128	79	6	11	214	0	0
<b>Western HSC Trust</b>	<b>179</b>	<b>45</b>	<b>13</b>	<b>350</b>	<b>122</b>	<b>76</b>	<b>22</b>	<b>270</b>	<b>0</b>	<b>0</b>
<b>Northern Ireland</b>	<b>506</b>	<b>75</b>	<b>79</b>	<b>2,306</b>	<b>450</b>	<b>605</b>	<b>53</b>	<b>915</b>	<b>15</b>	<b>1</b>

Source: QOAR (Part 1)

Note: DNA = Did not attend, CNA = Could not attend

**Table 57: Specialty 823 - Activity by HSC Hospital / Trust for Haematology, 2009/10**

Hospital / Trust	Attendances						Hospital Cancellations		Patient	Private
	Seen	<u>New</u> DNA	CNA	Seen	<u>Review</u> DNA	CNA	New	Review	Died	Patient Attendances
RBHSC	76	10	4	1,596	344	25	19	39	0	0
Mater Infirmorum	32	2	0	3,939	460	110	1	117	5	0
<b>Belfast HSC Trust</b>	<b>108</b>	<b>12</b>	<b>4</b>	<b>5,535</b>	<b>804</b>	<b>135</b>	<b>20</b>	<b>156</b>	<b>5</b>	<b>0</b>
Causeway	107	7	10	773	51	57	2	25	9	0
<b>Northern HSC Trust</b>	<b>107</b>	<b>7</b>	<b>10</b>	<b>773</b>	<b>51</b>	<b>57</b>	<b>2</b>	<b>25</b>	<b>9</b>	<b>0</b>
<b>Northern Ireland</b>	<b>215</b>	<b>19</b>	<b>14</b>	<b>6,308</b>	<b>855</b>	<b>192</b>	<b>22</b>	<b>181</b>	<b>14</b>	<b>0</b>

Source: QOAR (Part 1)

Note: DNA = Did not attend, CNA = Could not attend

**Table 58: Specialty 990 - Activity by HSC Hospital / Trust for Joint Consultant Clinics, 2009/10<sup>R</sup>**

Hospital / Trust	Attendances						Hospital Cancellations		Patient	Private
	Seen	<u>New</u> DNA	CNA	Seen	<u>Review</u> DNA	CNA	New	Review	Died	Patient Attendances
Royal Maternity	1,144	76	93	3,133	320	196	173	162	0	0
<b>Belfast HSC Trust</b>	<b>1,144</b>	<b>76</b>	<b>93</b>	<b>3,133</b>	<b>320</b>	<b>196</b>	<b>173</b>	<b>162</b>	<b>0</b>	<b>0</b>
Antrim	164	14	29	534	14	49	20	56	0	0
<b>Northern HSC Trust</b>	<b>164</b>	<b>14</b>	<b>29</b>	<b>534</b>	<b>14</b>	<b>49</b>	<b>20</b>	<b>56</b>	<b>0</b>	<b>0</b>
<b>Northern Ireland</b>	<b>1,308</b>	<b>90</b>	<b>122</b>	<b>3,667</b>	<b>334</b>	<b>245</b>	<b>193</b>	<b>218</b>	<b>0</b>	<b>0</b>

Source: QOAR (Part 1)

Note: DNA = Did not attend, CNA = Could not attend, <sup>R</sup> Data have been revised

## Appendix 1: Specialties in each Hospital during 2009/10

Hospital	Specialties
Alexandra Gardens	Mental Illness, Old Age Psychiatry
Altnagelvin	General Surgery, Urology, Trauma & Orthopaedics, Ear, Nose & Throat, Ophthalmology, Oral Surgery, Orthodontics, Neurosurgery, Thoracic Surgery, Pain Management, General Medicine, Haematology (Clinical), Palliative Medicine, Cardiology, Dermatology, Genito-Urinary Medicine, Nephrology, Neurology, Rheumatology, Paediatrics, Paediatric Neurology, Geriatric Medicine, Gynaecology, Obstetrics (Ante Natal), Chemical Pathology
Antrim	General Surgery, Ear, Nose & Throat, Oral Surgery, Accident & Emergency, Anaesthetics, Pain Management, General Medicine, Gastroenterology, Endocrinology, Haematology (Clinical), Palliative Medicine, Cardiology, Dermatology, Nephrology, Medical Oncology, Neurology, Rheumatology, Paediatrics, Geriatric Medicine, Gynaecology, Obstetrics (Ante Natal), Obstetrics (Post Natal), Clinical Oncology, Chemical Pathology, Joint Consultant Clinics
Ards	General Surgery, Urology, Ear, Nose & Throat, Ophthalmology, Plastic Surgery, Accident & Emergency, General Medicine, Haematology (Clinical), Cardiology, Dermatology, Thoracic Medicine, Paediatrics, Gynaecology, Old Age Psychiatry
Armagh Community	General Surgery, Trauma & Orthopaedics, Ear, Nose & Throat, Ophthalmology, General Medicine, Gastroenterology, Cardiology, Dermatology, Rheumatology, Paediatrics, Gynaecology, Obstetrics (Ante Natal)
Banbridge	General Surgery, Urology, Ear, Nose & Throat, Pain Management, Endocrinology, Cardiology, Neurology, Rheumatology, Paediatrics, Gynaecology, Obstetrics (Ante Natal), Chemical Pathology
Bangor	General Surgery, Urology, Ear, Nose & Throat, Ophthalmology, Accident & Emergency, General Medicine, Haematology (Clinical), Cardiology, Dermatology, Thoracic Medicine, Gynaecology
Beechcroft (formerly Young People's Centre)	Child & Adolescent Psychiatry
Belfast City	General Surgery, Urology, Ear, Nose & Throat, Ophthalmology, Thoracic Surgery, Accident & Emergency, Pain Management, General Medicine, Gastroenterology, Endocrinology, Haematology (Clinical), Clinical Genetics, Palliative Medicine, Cardiology, Dermatology, Thoracic Medicine, Nephrology, Medical Oncology, Neurology, Rheumatology, Paediatric Neurology, Geriatric Medicine, Gynaecology, Clinical Oncology
Bluestone (formerly Craigavon PNU)	Paediatrics



## Appendix 1 (Continued)

Cancer Centre	Haematology (Clinical), Palliative Medicine, Medical Oncology, Clinical Oncology, Radiology
Carrickfergus	General Medicine, Gynaecology
Causeway	General Surgery, Urology, Ear, Nose & Throat, Orthodontics, Anaesthetics, Pain Management, General Medicine, Gastroenterology, Endocrinology, Haematology (Clinical), Cardiology, Dermatology, Genito-Urinary Medicine, Neurology, Rheumatology, Paediatrics, Gynaecology, Obstetrics (Ante Natal), Chemical Pathology
Craigavon Area	General Surgery, Urology, Trauma & Orthopaedics, Ear, Nose & Throat, Ophthalmology, Oral Surgery, Restorative Dentistry, Paediatric Dentistry, Orthodontics, Thoracic Surgery, Pain Management, General Medicine, Gastroenterology, Endocrinology, Haematology (Clinical), Palliative Medicine, Cardiology, Dermatology, Thoracic Medicine, Neurology, Rheumatology, Paediatrics, Geriatric Medicine, Gynaecology, Obstetrics (Ante Natal), Chemical Pathology
Daisy Hill	General Surgery, Ear, Nose & Throat, Ophthalmology, Oral Surgery, Thoracic Surgery, Accident & Emergency, Pain Management, General Medicine, Endocrinology, Haematology (Clinical), Cardiology, Dermatology, Genito-Urinary Medicine, Nephrology, Neurology, Paediatrics, Gynaecology, Obstetrics (Ante Natal), Obstetrics (Post Natal)
Downe	General Surgery, Urology, Trauma & Orthopaedics, Ear, Nose & Throat, Ophthalmology, Accident & Emergency, General Medicine, Gastroenterology, Dermatology, Thoracic Medicine, Rheumatology, Paediatrics, Gynaecology, Obstetrics (Ante Natal)
Erne	General Surgery, Trauma & Orthopaedics, Ear, Nose & Throat, Ophthalmology, Oral Surgery, Orthodontics, General Medicine, Haematology (Clinical), Palliative Medicine, Cardiology, Dermatology, Nephrology, Neurology, Rheumatology, Paediatrics, Geriatric Medicine, Gynaecology, Obstetrics (Ante Natal)
Gransha	Paediatrics
Kilkeel (formerly Mourne)	General Surgery, General Medicine, Endocrinology, Gynaecology, Obstetrics (Ante Natal), Obstetrics (Post Natal)
Lagan Valley	General Surgery, Urology, Trauma & Orthopaedics, Ear, Nose & Throat, Ophthalmology, Accident & Emergency, General Medicine, Endocrinology, Dermatology, Thoracic Medicine, Rheumatology, Paediatrics, Geriatric Medicine, Gynaecology, Obstetrics (Ante Natal)
Lakeview (formerly Stradreagh)	Learning Disability
Longstone	Learning Disability

## Appendix 1 (Continued)

Lurgan	Paediatrics Neurology, Geriatric Medicine
Mater	General Surgery, Urology, Trauma & Orthopaedics, Ear, Nose & Throat, Ophthalmology, Accident & Emergency, Pain Management, General Medicine, Haematology (Clinical), Cardiology, Dermatology, Gynaecology, Obstetrics (Ante Natal), Mental Illness, Old Age Psychiatry
Mid-Ulster	General Surgery, Ear, Nose & Throat, Oral Surgery, Orthodontics, General Medicine, Gastroenterology, Haematology (Clinical), Palliative Medicine, Dermatology, Neurology, Rheumatology, Paediatrics, Gynaecology, Obstetrics (Ante Natal)
Moyle	General Surgery, Ear, Nose & Throat, General Medicine, Dermatology, Rheumatology, Paediatrics, Gynaecology, Obstetrics (Ante Natal)
Muckamore Abbey	Paediatrics, Learning Disability
Mullinure	Geriatric Medicine
Musgrave Park	Trauma & Orthopaedics, Anaesthetics, Rehabilitation, Rheumatology, Geriatric Medicine
Roe Valley (Outpatients)	General Surgery, Urology, Trauma & Orthopaedics, Ear, Nose & Throat, Ophthalmology, General Medicine, Cardiology, Dermatology, Paediatrics, Geriatric Medicine, Gynaecology, Obstetrics (Ante Natal)
RBHSC	Trauma & Orthopaedics, Ear, Nose & Throat, Paediatric Dentistry, Neurosurgery, Plastic Surgery, Paediatric Surgery, Haematology (Clinical), Cardiology, Dermatology, Nephrology, Medical Oncology, Paediatrics, Paediatric Neurology
Royal Maternity	Paediatrics, Obstetrics (Ante Natal), Joint Consultant Clinics
Royal Victoria	General Surgery, Urology, Trauma & Orthopaedics, Ear, Nose & Throat, Ophthalmology, Oral Surgery, Restorative Dentistry, Paediatric Dentistry, Orthodontics, Neurosurgery, Plastic Surgery, Cardiac Surgery, Thoracic Surgery, General Medicine, Gastroenterology, Endocrinology, Haematology (Clinical), Clinical Genetics, Rehabilitation, Cardiology, Dermatology, Thoracic Medicine, Genito-Urinary Medicine, Nephrology, Neurology, Clinical Neuro-Physiology, Rheumatology, Geriatric Medicine, Dental Medicine Specialties, Gynaecology

## Appendix 1 (Continued)

South Tyrone	General Surgery, Urology, Ear, Nose & Throat, Ophthalmology, Pain Management, General Medicine, Gastroenterology, Endocrinology, Haematology (Clinical), Palliative Medicine, Cardiology, Dermatology, Thoracic Medicine, Nephrology, Neurology, Rheumatology, Paediatrics, Geriatric Medicine, Gynaecology, Obstetrics (Ante Natal)
Tyrone County	General Surgery, Urology, Trauma & Orthopaedics, Ear, Nose & Throat, Ophthalmology, Pain Management, General Medicine, Haematology (Clinical), Palliative Medicine, Cardiology, Dermatology, Nephrology, Neurology, Rheumatology, Paediatrics, Geriatric Medicine, Gynaecology, Obstetrics (Ante Natal), Chemical Pathology
Ulster	General Surgery, Urology, Trauma & Orthopaedics, Ear, Nose & Throat, Ophthalmology, Oral Surgery, Restorative Dentistry, Paediatric Dentistry, Plastic Surgery, Paediatric Surgery, Accident & Emergency, Pain Management, General Medicine, Haematology (Clinical), Palliative Medicine, Cardiology, Dermatology, Thoracic Medicine, Nephrology, Neurology, Paediatrics, Geriatric Medicine, Gynaecology, Obstetrics (Ante Natal)
Waveney	General Surgery, Ear, Nose & Throat, Orthodontics, General Medicine, Gastroenterology, Endocrinology, Cardiology, Dermatology, Rheumatology, Paediatrics, Geriatric Medicine, Gynaecology, Obstetrics (Ante Natal), Obstetrics (Post Natal)
Whiteabbey	General Surgery, Ear, Nose & Throat, Accident & Emergency, General Medicine, Gastroenterology, Haematology (Clinical), Palliative Medicine, Cardiology, Dermatology, Rheumatology, Paediatrics, Geriatric Medicine, Gynaecology, Obstetrics (Ante Natal)
Windsor House	Mental Illness, Psychotherapy, Old Age Psychiatry

## Appendix 2: Hospitals Open within Each Provider for All or Part of Year Ending 31 March 2010

Health and Social Care Trust	Hospital
<b>Belfast Health and Social Care Trust</b>	Alexandra Gardens, Beechcroft (formerly Young People's Centre), Belfast City, NI Cancer Centre(formerly Belvoir Park), Forster Green, Knockbracken, Mater Infirmorum, Muckamore Abbey, Musgrave Park (now includes Forest Lodge), RBHSC, Royal Maternity, Royal Victoria, Shaftesbury Square, Windsor House
<b>Northern Health and Social Care Trust</b>	Antrim, Braid Valley, Carrickfergus, Causeway, Dalriada, Holywell, Mid Ulster, Moyle, Robinson Memorial, Waveney, Whiteabbey, Whiteabbey PNU
<b>South Eastern Health and Social Care Trust</b>	Ards, Bangor, Downe, Downshire, Lagan Valley, Lagan Valley PNU, Thompson House, Ulster
<b>Southern Health and Social Care Trust</b>	Armagh Community, Banbridge, Craigavon Area, Bluestone (formerly Craigavon Area PNU), Daisy Hill, Kilkeel Primary Care Centre (formerly Mourne), Longstone, Lurgan, Mullinure, South Tyrone, St Luke's
<b>Western Health and Social Care Trust</b>	Altnagelvin Area, Erne, Gransha, Lakeview (formerly Stradreagh), NWHI (formerly Roe Valley Inpatients), Roe Valley Outpatients, Tyrone County, Tyrone & Fermanagh, Waterside (Wards 1-4)

## Appendix 3: Definitions

### Outpatient Services

An outpatient service is a consultant led service provided by Health and Social Care Trusts to allow patients to see a consultant, their staff and associated health professionals for assessment in relation to a specific condition. Patients are not admitted into hospital for this assessment. Outpatient services are usually provided during a clinic session providing an opportunity for consultation, investigation and minor treatment. Patients normally attend by prior arrangement. Although a consultant is in overall charge, they may not be present on all occasions the clinic is held. They must, however, be represented by a member of their team.

### Outpatient Appointment

An outpatient appointment is an administrative arrangement enabling patients to see a consultant, their staff and associated health professionals, following an outpatient referral. Outpatient appointments relate to all appointments with a consultant led service, irrespective of the location in which the service is performed.

### New Attendance

A new attendance is the first of a series or the only attendance at an outpatient service with a consultant or their representative following an outpatient referral. In practice, most referrals will be seen as a consequence of a GP referral request; however, referrals may also be received from a range of other sources. First attendances at an outpatient clinic that are initiated by the consultant, who has already seen the patient, are classified as review attendances i.e. following an attendance at an Accident & Emergency unit or following an inpatient admission.

### Review Attendances

A review attendance is an attendance at an outpatient service following; a new outpatient attendance, a previous review attendance, an attendance at an Accident & Emergency unit, a domiciliary visit, or following an inpatient admission, for the same condition. Essentially review appointments are all appointments that are not a first appointment.

### Did Not Attend (DNA'd) / Missed Appointment

This is the number of patients who did not attend, and failed to give advance warning to the hospital, for an outpatient appointment. This includes patients who cancelled their outpatient appointment on the same day on which the appointment was scheduled. These should not be confused with those who could not attend and who did warn the hospital in advance (before the day on which the appointment was scheduled).

## Appendix 3 (continued)

### DNA rate

This is the number of patients who did not attend, and failed to give advance warning to the hospital, taken as a rate of attendances and missed appointments. This is calculated by the following formula:

$$((\text{Number of DNAs}) / (\text{Number of attendances} + \text{Number of DNAs})) * 100$$

### Could Not Attend (CNA'd) / Patient Cancellation

This is the number of patients who could not attend, and gave advance warning to the hospital, for an outpatient appointment before the day of the scheduled appointment. These should not be confused with those who either did not attend without prior warning or those who could not attend and informed the hospital on the day on which the appointment was scheduled. This does not include appointments cancelled as a result of the hospital being notified of the patient's death. Depending on the timing of the cancellation, these appointments may be rescheduled for attendance by another patient.

### CNA rate

This is the number of patients who could not attend, and gave advance warning to the hospital, taken as a rate of attendances and missed appointments. This is calculated by the following formula:

$$((\text{Number of CNAs}) / (\text{Number of attendances} + \text{Number of CNAs})) * 100$$

### Outpatient Appointment Cancelled by the Hospital / Hospital Cancellation

This is the number of outpatient appointments that have been cancelled by the provider Health and Social Care Trust. A cancelled appointment is one which was intended to be held but which did not occur. Such cancellations do not include those cancelled by the patient (Could Not Attend), appointments the patient did not attend without giving prior notice (DNA) and appointments cancelled by the hospital as a result of the patient's death. Depending on the timing of the cancellation, these appointments may be rescheduled for attendance by another patient.

### Hospital Cancellation rate

This is the number of appointments cancelled by hospitals, taken as a rate of attendances and hospital cancellations. This is calculated by the following formula:

$$((\text{Number of hospital cancellations}) / (\text{Number of attendances} + \text{Number of hospital cancellations})) * 100$$

## Appendix 3 (continued)

### Reasons for Cancellation

An outpatient appointment may be cancelled by either the provider Health and Social Care Trust (a hospital cancellation) or the patient (patient could not attend – CNA).

Hospital Cancellations may occur for the following reasons:

- Consultant unavailable
- Medical staff / Nurse unavailable
- Patient treated elsewhere
- Consultant cancelled appointment
- Appointment rescheduled (brought forward)
- Appointment rescheduled (put back)
- Cancelled following validation / audit
- Administrative error by hospital
- Hospital transport not available

Patient Cancellations (CNA) may occur for the following reasons:

- Patient cancelled appointment as it is no longer required
- Patient cancelled but the appointment is still required
- GP cancelled appointment

If no reason for cancellation has been recorded, Trusts report this as 'No reason for cancellation recorded'.

If an incorrect reason for cancellation has been recorded, for example if one of the hospital cancellation reasons are recorded against a patient cancellation, Trusts report the reasons for such cancellations as 'Incorrect reason for cancellation recorded'.

Cancellations due to the death of a patient are reported separately and should not be included within the figures for either Patient Cancellations (CNA) or hospital cancellations.

### Private Patient Attendances

A private patient is one who has opted to have treatment outside the Health Service and has undertaken to pay for all expenses incurred, including treatment and accommodation costs. Private patient attendances relate to private patients who attend an outpatient appointment at a facility provided by a Health and Social Care Trust.

### Specialty

A specialty is a particular branch of medicine or surgery. Each consultant is assigned a main specialty from a list recognised by the Royal Colleges and Faculties. Information is recorded against the specialty of the treating consultant.

## Appendix 4: Explanatory Notes

1. From the beginning of 2008/09, the Quarterly Outpatient Activity Return (QOAR) replaced the KH09 (Part 1) as the source of data relating to outpatient activity. As a consequence of this new methodology, the collection of data on scheduled and cancelled clinics was replaced with the collection of data on appointments cancelled by both hospitals (hospital cancellations) and patients (Could not attend or CNAs). The definition of a missed appointment or did not attend (DNA) has been amended to also include CNAs on the day of the appointment. As a result of this amendment, DNA figures for 2008/09 and 2009/10 are not directly comparable with those published in previous years.
2. During 2009/10, a number of patients were treated as part of Integrated Clinical Assessment and Treatment Services (ICATS). ICATS became an official service in the Trauma & Orthopaedics specialty on 01/10/07. A number of other services that are provided through an ICATS type model were operational during 2009/10. These services did not become official ICATS until 01/04/10. Consequently, activity at these services is included in the outpatient attendance figures for 2009/10.
3. Following amendments received from the Belfast HSCT, relating to activity at the Royal Victoria, Royal Maternity and RBHSC during 2008/09 and 2009/10, a revised edition of this publication was released on Tuesday 19<sup>th</sup> October 2010. These revisions now mean that the number of attendances at consultant led outpatient services in Northern Ireland during 2008/09 has been reduced from 1,563,830 to 1,523,802, with the 2009/10 figure decreasing from 1,542,961 to 1,503,529.
4. For Genito-Urinary Medicine (Specialty 360), patient and hospital cancellation data were unavailable.
5. During 2008/09 Health and Social Care Trusts in Northern Ireland undertook a process of reclassifying a number of outpatient services in the Mental Health Programme of Care, from a consultant led to a non consultant led model of service delivery. As a consequence of these reclassifications, data relating to activity within these services are no longer included within the outpatient data contained in this publication. Data users should be aware of these developments when comparing data reported for both 2008/09 and 2009/10 with that published in previous years.
6. The data contained in this publication have been compiled from the Quarterly Outpatient Activity Return (QOAR), which was introduced from 01/08/08. They refer to all HSC hospitals in Northern Ireland that provide consultant led outpatient activity. Any amendments notified by providers after 06/08/10 have not been included.
7. For Accident and Emergency (Specialty 180), the South Eastern HSC Trust recorded all cancellations, both by patients and hospitals, as review CNAs as limitations of the Symphony system prevented the differentiation between patient and hospital cancellations.
8. In accordance with the Review of Public Administration, with effect from the 01/04/07, five new integrated Health and Social Care Trusts (Belfast, Northern, South Eastern, Southern and Western) replaced the previous eighteen provider Trusts in Northern Ireland. Tables have been presented based on the new Trust Areas.
9. All of the data contained in the tables are also available on a quarterly basis and can be supplied by individual specialty or hospital/Provider if this level of detail is required (as in previous bulletins). In addition, annual data relating to outpatient activity during 2009/10 has also been published in spreadsheet format (Microsoft Excel), split by HSC Trust, hospital, specialty and Programme of Care, in order to aid secondary analysis. These data are available at [http://www.dhsspsni.gov.uk/index/stats\\_research/stats-pubs.htm](http://www.dhsspsni.gov.uk/index/stats_research/stats-pubs.htm).



## Appendix 5: Additional Information

**Further information** on Outpatient Activity in Northern Ireland, is available from:

**Ms. Kerri Burgess**

Hospital Information Branch

Information & Analysis Directorate

Department of Health, Social Services & Public Safety

Stormont Estate

Belfast, BT4 3SQ

☎ Tel: 028 905 23264

☎ Fax: 028 905 23288

✉ Email: [kerri.burgess@dhsspsni.gov.uk](mailto:kerri.burgess@dhsspsni.gov.uk)

**This Statistical bulletin and others published by Hospital Information Branch are available to download from the DHSSPS Internet site at:**

Internet address: [http://www.dhsspsni.gov.uk/index/stats\\_research/stats-activity\\_stats-2.htm](http://www.dhsspsni.gov.uk/index/stats_research/stats-activity_stats-2.htm)