



NORTHERN IRELAND HOSPITAL STATISTICS: INPATIENT AND DAYCASE ACTIVITY STATISTICS 2009/10

This publication presents information on inpatient and day case activity at Health and Social Care Trusts in Northern Ireland during the year ending 31 March 2010. It details information on Available Beds, Occupied Beds, Occupancy Rates, Average Length of Stay, Theatre Utilisation and Hospital Births. All data are presented by HSC Trust, hospital and specialty.

Issue No: 1

Date of Publication:
26 August 2010

Theme:
Inpatient Activity Statistics in
Northern Ireland

Issued by
Hospital Information Branch
Information & Analysis Directorate
Department of Health, Social Services &
Public Safety
Stormont Estate
Belfast, BT4 3SQ

Statistician
Rachel Stewart
(028) 90 522592

Email
rachel.stewart@dhsspsni.gov.uk

Internet
http://www.dhsspsni.gov.uk/index/stats_research/stats-activity_stats-2.htm

Contents

	Page
Technical Notes	8
All Programmes of Care	9
Acute Programme of Care	11
Other Programmes of Care	15
Tables	19
Appendices	89

Background

As a result of a public consultation early in 2010, the previously known 'Hospital Statistics' publication was discontinued and replaced with four themed statistical publications detailing information on: Inpatient & Day Case Activity, Outpatient Activity, Mental Health & Learning Disability, and Emergency Care.

All inpatient and day case activity statistics previously presented in the 'Hospital Statistics' publication, are now detailed in this report.

Key Points

- During 2009/10, 583,501 patients were admitted to HSC hospitals in Northern Ireland. This was a decrease of 6,002 (-1.0%) on the 589,503 admitted during the previous year, but was up 36,157 (+6.6%) on the number admitted in 2005/06 (Figure 1, Table 1).
- The bed occupancy rate during 2009/10 was 81.8%; this was a decrease from 82.3% in 2008/09 and a decrease from 83.6% in 2005/06 (Table 1).
- During 2009/10 the average length of stay in hospital was 7.2 days. This is a decrease of 0.2 days (-2.7%) compared to 2008/09 and 1.3 days (-14.5%) compared to 2005/06 (Figure 7, Table 1).
- 86.5% (504,888) of patients admitted during 2009/10 were treated within the acute services programme of care (Table 1).
- There were 169,790 day case admissions to hospital during 2009/10 under the acute programme of care. This was a decrease of 4,710 (-2.7%) on the total number of day cases admitted during 2008/09, but was an increase of (+9.7%) on the number admitted during 2005/06 (Figure 13, Table 1).

Reader Information

Purpose	Monitor and report on inpatient and day case activity carried out in HSC Trusts in Northern Ireland.
Authors	Rachel Stewart, Christine Kennedy, Laura Smyth.
Publication Date	Thursday 26 th August 2010
Reporting Period	1 st April 2009 – 31 st March 2010
Publication Issue	1
Statistical Quality	Information detailed in this release has been quality assured with HSC Trusts prior to release.
Target audience	DHSSPS, Chief Executives of HSC Board and Trusts in Northern Ireland, health care professionals, academics, and Health & Social Care stakeholders.
Further copies from	statistics@dhsspsni.gov.uk
Internet address	http://www.dhsspsni.gov.uk/index/stats_research/stats-activity_stats-2.htm
Price	Free
Copyright	This publication is Crown copyright and may be reproduced free of charge in any format or medium. Any material used must be acknowledged, and the title of the publication specified.

About the Hospital Information Branch (HIB)

Hospital Information Branch is responsible for the collection, quality assurance, analysis and publication of timely and accurate information derived from a wide range of statistical information returns supplied by the HSC Trusts and Hospitals. Statistical information is collected routinely from a variety of electronic patient level administrative system and pre-defined EXCEL survey return templates. The Head of the Branch is the Principal Statistician, Mrs. Laura Smyth.

The Branch aims to present information in a meaningful way and provide advice on its uses to customers in the Health and Social Care Committee, Professional Advisory Groups, policy branches within the DHSSPS and the general public. The statistical information collected is used to contribute to major exercises such as reporting on corporate monitoring, Health & Personal Social Services (HPSS) performance tables, other comparative performance exercises, target setting, management frameworks and policy development / evaluation. In addition, the information is used in response to a significantly high volume of Parliamentary / Assembly questions and ad-hoc queries each year.

Information is disseminated through a number of key statistical publications, including: Inpatient Activity, Outpatient Activity, Emergency Care and Waiting Time Statistics (Inpatient, Outpatient, Diagnostics and Cancer). A detailed list of these publications is available from:

Website: http://www.dhsspsni.gov.uk/index/stats_research/stats-activity_stats-2.htm

List of Figures

Figure 1:	Total Admissions to HSC Hospitals in Northern Ireland, (2005/06 - 2009/10)	9
Figure 2:	Total Admissions to Hospitals by HSC Trust, 2009/10	9
Figure 3:	Average number of Available and Occupied Beds in HSC Hospitals in Northern Ireland, (2005/06 - 2009/10)	9
Figure 4:	Average number of Available and Occupied Beds in HSC Hospitals in Northern Ireland, (2009/10)	10
Figure 5:	Throughput in HSC Hospitals in Northern Ireland, (2005/06 - 2009/10)	10
Figure 6:	Throughput in HSC Hospitals in Northern Ireland by trust, (2009/10)	10
Figure 7:	Average Length of Stay in HSC Hospitals in Northern Ireland, (2005/06 - 2009/10)	11
Figure 8:	Average Length of Stay in HSC Hospitals in Northern Ireland by HSC Trust, (2009/10)	11
Figure 9:	Total Admissions to HSC Hospitals in Northern Ireland under the Acute Programme of Care, (2005/06 - 2009/10)	11
Figure 10:	Number of Admissions by Patient Type to HSC Hospitals in Northern Ireland under the Acute Programme of Care, (2005/06 - 2009/10)	12
Figure 11:	Total Admissions to Hospital within the Acute Programme of Care by HSC Trust, 2009/10	12
Figure 12:	Proportion of Admissions in the Acute Programme of Care for each Patient Type by HSC Trust, (2009/10)	12
Figure 13:	Day Case Rate for Admissions to HSC Hospitals under the Acute Programme of Care, (2005/06 – 2009/10)	13
Figure 14:	Day Case Rate for Admissions to HSC Hospitals under the Acute Programme of Care by HSC Trust, (2009/10)	13
Figure 15:	Average Number of Available and Occupied Beds in HSC Hospitals in Northern Ireland within the Acute Programme of Care, (2005/06 - 2009/10)	13
Figure 16:	Average number of Available and Occupied Beds within the Acute Programme of Care in Northern Ireland by HSC Trust, (2009/10)	14
Figure 17:	Average Length of Stay for Admissions within the Acute Programme of Care, (2005/06 – 2009/10)	14
Figure 18:	Average Length of Stay for Admissions within the Acute Programme of Care by HSC Trust, (2009/10)	14
Figure 19:	The Top 12 Specialties that account for the Longest Average Length of Stays in Northern Ireland, (2009/10)	14
Figure 20:	Total Admissions to HSC Hospitals in Northern Ireland under the Maternity Programme of Care, (2005/06 - 2009/10)	15

Figure 21:	Average Number of Available and Occupied Beds in HSC Hospitals in Northern Ireland within the Maternity Programme of Care, (2005/06 - 2009/10)	15
Figure 22:	Total Births in HSC Hospitals in Northern Ireland (2005/06 - 2009/10)	15
Figure 23:	Total Births in HSC Hospitals in Northern Ireland by HSC Trust (2009/10)	16
Figure 24:	Total Admissions to HSC Hospitals in Northern Ireland under Elderly Care Programme of Care, (2005/06 - 2009/10)	16
Figure 25:	Average Number of Available and Occupied Beds in HSC Hospitals in Northern Ireland within the Elderly Care Programme of Care, (2005/06 - 2009/10)	16
Figure 26:	Day Case Admissions to HSC Hospitals in Northern Ireland (2005/06 - 2009/2010)	16
Figure 27:	Average Length of Stay for Admissions within the Elderly Care Programme of Care (2005/06 - 2009/10)	17
Figure 28:	Total Admissions to Hospital within the Elderly Care Programme of Care by HSC Trust, 2009/10	17
Figure 29:	Total Admissions to HSC Hospitals in Northern Ireland under the Mental Health Programme of Care, (2005/06 - 2009/10)	17
Figure 30:	Average Number of Available and Occupied Beds in HSC Hospitals in Northern Ireland within the Mental Health Programme of Care, (2005/06 - 2009/10)	17
Figure 31:	Total Admissions to Hospital within the Mental Health Programme of Care by HSC Trust, 2009/10	18
Figure 32:	Total Number of Admissions to HSC Hospitals in Northern Ireland within the Learning Disability Programme of Care, (2005/06 - 2009/10)	18
Figure 33:	Average Number of Available and Occupied Beds in HSC Hospitals in Northern Ireland within the Learning Disability Programme of Care, (2005/06 - 2009/10)	18

List of Tables

Table 1:	Selected Activity Trends by Programme of Care, 2005/06 - 2009/10	19
Table 2a:	All Programmes of Care Inpatient and Day Case Activity Data by Hospital/HSC Trust, 2009/10	21
Table 2b:	All Programmes of Care Inpatient and Day Case Activity Data by Specialty, 2009/10	24
Table 2c:	All Programmes of Care Availability and Use of Operating Theatres by HSC Trust, 2009/10	26
Table 2d:	All Programmes of Care Availability and Use of Operating Theatres by Specialty, 2009/10	28
Table 3a:	Acute Services Inpatient and Day Case Activity Data by Hospital/HSC Trust, 2009/10	29
Table 3b:	Acute Services Availability and Use of Operating Theatres, by HSC Trust (2009/10)	31
Table 3c:	Acute Services Private Patient Activity Data by Hospital/HSC Trust, 2009/10	33
Table 4a:	Maternity and Child Health Inpatient and Day Case Activity Data by Hospital/HSC Trust, 2009/10	34
Table 4b:	Maternity and Child Health Availability and Use of Operating Theatres, by HSC Trust (2009/10)	35
Table 4c:	Maternity and Child Health Number of Live & Still Births in Hospital by Hospital/HSC Trust, 2009/10	36
Table 5:	Elderly Care Inpatient and Day Case Activity Data by Hospital/HSC Trust, 2009/10	37
Table 6:	Mental Health Inpatient and Day Case Activity Data by Hospital/HSC Trust, 2009/10	39
Table 7:	Learning Disability Inpatient and Day Case Activity Data by Hospital/HSC Trust, 2009/10	40
Table 8:	Specialty 100 – Activity by HSC Hospital / Trust for General Surgery	41
Table 9:	Specialty 101 – Activity by HSC Hospital / Trust for Urology	42
Table 10:	Specialty 110 – Activity by HSC Hospital / Trust for Trauma and Orthopaedics	43
Table 11:	Specialty 120 – Activity by HSC Hospital / Trust for Ear, Nose and Throat	44
Table 12:	Specialty 130 – Activity by HSC Hospital / Trust for Ophthalmology	45
Table 13:	Specialty 140 – Activity by HSC Hospital / Trust for Oral Surgery	46
Table 14:	Specialty 142 – Activity by HSC Hospital / Trust for Paediatric Dentistry	47
Table 15:	Specialty 150 – Activity by HSC Hospital / Trust for Neurosurgery	48
Table 16:	Specialty 160 – Activity by HSC Hospital / Trust for Plastic Surgery	49
Table 17:	Specialty 170 – Activity by HSC Hospital / Trust for Cardiac Surgery	50
Table 18:	Specialty 171 – Activity by HSC Hospital / Trust for Paediatric Surgery	51
Table 19:	Specialty 172 – Activity by HSC Hospital / Trust for Thoracic Surgery	52
Table 20:	Specialty 180 – Activity by HSC Hospital / Trust for Accident and Emergency	53
Table 21:	Specialty 190 – Activity by HSC Hospital / Trust for Anaesthetics	54
Table 22:	Specialty 191 – Activity by HSC Hospital / Trust for Pain Management	55
Table 23:	Specialty 300 – Activity by HSC Hospital / Trust for General Medicine	56
Table 24:	Specialty 301 – Activity by HSC Hospital / Trust for Gastroenterology	58
Table 25:	Specialty 302 – Activity by HSC Hospital / Trust for Endocrinology	59

Table 26:	Specialty 303 – Activity by HSC Hospital / Trust for Haematology (Clinical)	60
Table 27:	Specialty 314 – Activity by HSC Hospital / Trust for Rehabilitation	61
Table 28:	Specialty 315 – Activity by HSC Hospital / Trust for Palliative Medicine	62
Table 29:	Specialty 320 – Activity by HSC Hospital / Trust for Cardiology	63
Table 30:	Specialty 330 – Activity by HSC Hospital / Trust for Dermatology	64
Table 31:	Specialty 340 – Activity by HSC Hospital / Trust for Thoracic Medicine	65
Table 32:	Specialty 350 – Activity by HSC Hospital / Trust for Infectious Diseases	66
Table 33:	Specialty 360 – Activity by HSC Hospital / Trust for Genito-Urinary Medicine	67
Table 34:	Specialty 361 – Activity by HSC Hospital / Trust for Nephrology	68
Table 35:	Specialty 370 – Activity by HSC Hospital / Trust for Medical Oncology	69
Table 36:	Specialty 400 – Activity by HSC Hospital / Trust for Neurology	70
Table 37:	Specialty 410 – Activity by HSC Hospital / Trust for Rheumatology	71
Table 38:	Specialty 420 – Activity by HSC Hospital / Trust for Paediatrics	72
Table 39:	Specialty 430 – Activity by HSC Hospital / Trust for Geriatric Medicine	73
Table 40:	Specialty 501 – Activity by HSC Hospital / Trust for Obstetrics	75
Table 41:	Specialty 502 – Activity by HSC Hospital / Trust for Gynaecology	76
Table 42:	Specialty 540 – Activity by HSC Hospital / Trust for Well Babies (Obstetrics)	77
Table 43:	Specialty 550 – Activity by HSC Hospital / Trust for Well Babies (Paediatrics)	78
Table 44:	Specialty 620 – Activity by HSC Hospital / Trust for General Practice Other	79
Table 45:	Specialty 700 – Activity by HSC Hospital / Trust for Learning Disability	80
Table 46:	Specialty 710 – Activity by HSC Hospital / Trust for Mental Illness	81
Table 47:	Specialty 711 – Activity by HSC Hospital / Trust for Child and Adolescent Psychiatry	82
Table 48:	Specialty 712 – Activity by HSC Hospital / Trust for Forensic Psychiatry	83
Table 49:	Specialty 713 – Activity by HSC Hospital / Trust for Psychotherapy	84
Table 50:	Specialty 715 – Activity by HSC Hospital / Trust for Old Age Psychiatry	85
Table 51:	Specialty 800 – Activity by HSC Hospital / Trust for Clinical Oncology	86
Table 52:	Specialty 810 – Activity by HSC Hospital / Trust for Radiology	87
Table 53:	Specialty 823 – Activity by HSC Hospital / Trust for Haematology	88

Technical Notes

This statistics release is the first of an annual series presenting information on inpatient and day case activity at HSC Trusts in Northern Ireland. Historically, this information on available beds, occupied beds, occupancy rates, average length of stay, theatre utilisation and hospital births were included within the NI Hospital Statistics publication; although, this publication has now been discontinued.

Data Collection

The information presented in this bulletin derives from a series of statistical returns (listed below) provided by HSC Trusts and Hospitals.

- Hospital Inpatient System (HIS)
- KH03a aggregate return
- KH08 aggregate return
- KP19 Part 2 aggregate return.

Rounding

Percentages have been rounded to whole numbers and as a consequence some percentages may not sum to 100.

Data Quality

All information presented in this bulletin has been validated and quality assured by HSC Trust and Hospitals prior to publication. HSC Trusts and Hospitals are given a set period of time to submit the information to HIB. Following submission, Hospital Information Branch perform a series of validation checks to ensure that information is consistent both within and across returns. Trend analyses are used to monitor annual variations and emerging trends. Queries arising from validation checks are presented to HSC Trusts for clarification and if required, returns may be amended and/or re-submitted.

Finally, prior to the publication of this information the data is presented to HSC Trusts and Hospitals for final sign-off.

A National Statistics Publication

National Statistics are produced to a high professional standard set out in the Code of Practice for Official Statistics. They undergo regular quality assurance reviews to ensure that they meet customer needs. They are produced free from any political interference. As we want to engage with users of our statistics, we invite you to feedback your comments on this publication to:

Rachel Stewart

Email: Rachel.Stewart@dhsspsni.gov.uk

Tel: (028) 90 522592

All Programmes of Care¹

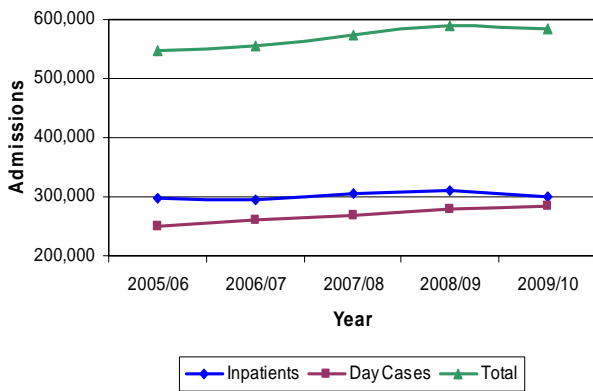
Data contained in this publication relates to all inpatient and day case activity carried out across all programmes of care within Health and Social Care hospitals in Northern Ireland during 2009/10.

Total Admissions²

5 Year Trend

During 2009/10, there were a total of 583,501 admissions to hospitals in Northern Ireland. This was a decrease of 6,002 (-1.0%) on the 589,503 seen during the previous year, but was up 36,157 (+6.6%) on the number admitted in 2005/06 (Figure 1, Table 1).

Figure 1: Total Admissions to HSC Hospitals in Northern Ireland, (2005/06 - 2009/10)



Financial Year 2009/10

Of the 583,501 patients admitted to hospital in 2009/10 51.4% (299,878) were admitted to hospital as an inpatient³ while the remaining 48.6% (283,623) were admitted for day case⁴ treatment (Table 2a).

Belfast HSC Trust had the highest percentage of admissions during 2009/10 accounting for 34.8% (203,246) of the total admissions in Northern Ireland. This was followed by 17.4% (101,794) in Western HSC Trust, 16.3% (95,343) in Southern HSC Trust, 15.9% (92,556) in South Eastern HSC Trust and 15.5% (90,562) in Northern HSC Trust (Figure 2, Table 2a).

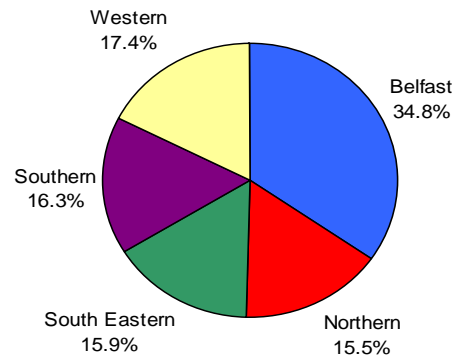
¹ Refer to Appendix 5: Explanatory Notes – Point 2.

² Refer to Appendix 4: Definitions – Point 12.

³ Refer to Appendix 4: Definitions – Point 9.

⁴ Refer to Appendix 4: Definitions – Point 10.

Figure 2: Total Admissions to Hospitals by HSC Trust, 2009/10



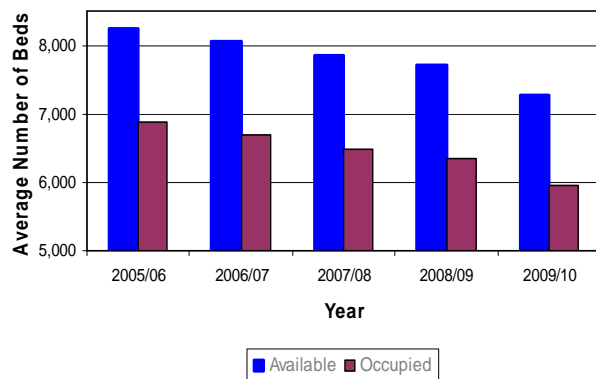
Bed Availability⁵ and Occupancy⁶

5 Year Trend

In the period between 2005/06 and 2009/10, the average number of available beds throughout Northern Ireland decreased by 11.7% (962) from 8,238 to 7,276. Similarly when comparing the average number of available beds during 2008/09 and 2009/10, we can see a decrease of 5.6% from 7,706 beds in 2008/09 to 7,276 beds in 2009/10 (Figure 3, Table 1).

This trend is also evident when comparing the average number of occupied beds over the same five year period. During 2009/10 there was an average of 5,952 occupied beds, a decrease of 392 (-6.2%) on the 6,344 occupied beds during the previous year, and a decrease of 932 (-13.5%) on the number of occupied beds in 2005/06 (Figure 3, Table 1).

Figure 3: Average Number of Available and Occupied Beds in HSC Hospitals in Northern Ireland, (2005/06 - 2009/10)



⁵ Refer to Appendix 4: Definitions – point 1.

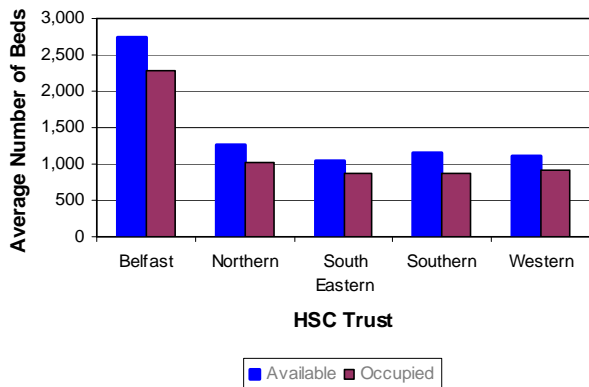
⁶ Refer to Appendix 4: Definitions – point 3.

The occupancy rate in hospitals in Northern Ireland was 81.8% during 2009/10; this was a decrease from 82.3% in 2008/09 and a decrease from 83.6% in 2005/06 (Table 1).

Financial Year 2009/10

Of the 7,276 average available beds in Northern Ireland in 2009/10, 37.5% (2,729) were located in Belfast HSC Trust. South Eastern HSC Trust had the lowest percentage of available beds with 14.3% (1,041) of the Northern Ireland total (Figure 4, Table 2a).

Figure 4: Average Number of Available and Occupied Beds in HSC Hospitals in Northern Ireland, (2009/10)



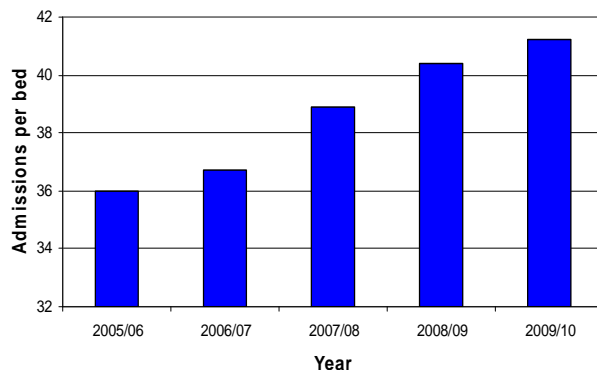
During 2009/10, Belfast HSC Trust had the highest percentage occupancy of all five trusts with 83.9%. While the lowest rate of occupancy was in the Southern HSC Trust (76.4%) (Table 2a).

Throughput ⁷

5 Year Trend

Throughput has increased each year from 36.0 admissions per bed in 2005/06 to 41.2 in 2009/10. The greatest increase was between 2006/07 and 2007/08 when throughput rose by 2.2 admissions per bed. While the rate of increase has slowed down, it continues to be apparent between 2008/09 and 2009/10 with an increase of 0.8 admissions per bed (Figure 5, Table 1).

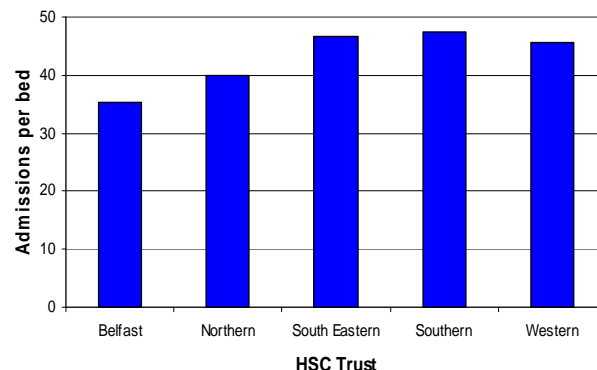
Figure 5: Throughput in HSC Hospitals in Northern Ireland, (2005/06 - 2009/10)



Financial Year 2009/10

In 2009/10, Southern HSC Trust had the highest throughput with 47.5 admissions per bed, while Belfast HSC Trust had the lowest with 35.4 admissions per bed (Figure 6, Table 2a).

Figure 6: Throughput in HSC Hospitals in Northern Ireland by trust, (2009/10)



Average Length of Stay ⁸

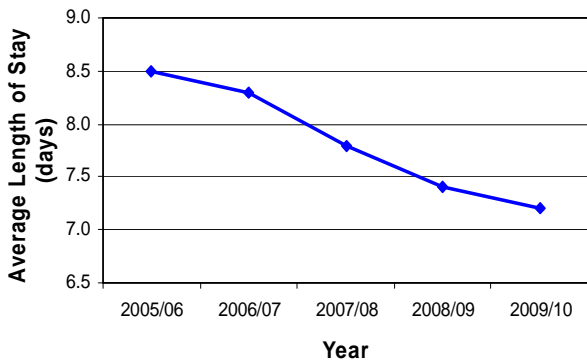
5 Year Trend

Average length of stay in hospitals has fallen consistently each year from 8.5 days in 2005/06 to 7.2 days in 2009/10. The greatest decrease was 0.5 days between 2006/07 and 2007/08. In the last year average length of stay fell by 0.2 days from 7.4 days in 2008/09 to 7.2 days in 2009/10 (Figure 7, Table 1).

⁷ Refer to Appendix 4: Definitions – Point 4.

⁸ Refer to Appendix 4: Definitions – Point 2.

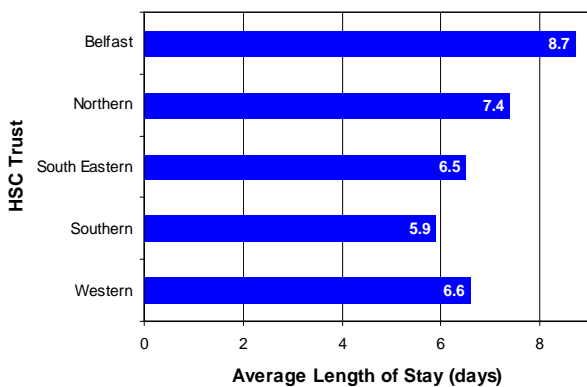
Figure 7: Average Length of Stay in HSC Hospitals in Northern Ireland, (2005/06 - 2009/10)



2009/10 Financial Year

In 2009/10, Belfast HSC Trust had the longest average length of stay with 8.7 days, followed by Northern HSC Trust with 7.4 days. Southern HSC Trust had the shortest with 5.9 days (Figure 8, Table 2a).

Figure 8: Average Length of Stay in HSC Hospitals in Northern Ireland by HSC Trust, (2009/10)



Acute Programme of Care⁹

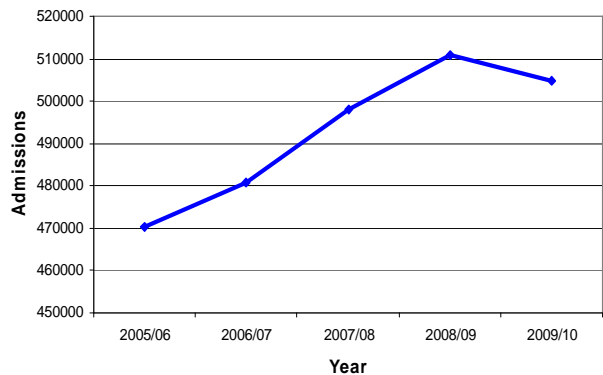
Total Admissions²

Admissions under the acute programme of care account for approximately 87% of all admission each year.

5 Year Trend

During 2009/10, there were a total of 504,888 admissions to hospitals in Northern Ireland under the acute programme of care. This was a decrease of 6,020 (-1.2%) on the 510,908 seen during the previous year, but was up 34,516 (+7.3%) on the number admitted in 2005/06 (Figure 9, Table 1).

Figure 9: Total Admissions to HSC Hospitals in Northern Ireland under the Acute Programme of Care, (2005/06 - 2009/10)



Between 2005/06 and 2008/09, there has been an overall increase in the number of admissions recorded under the acute programme of care for each patient type. However during 2009/10, the number of elective¹⁰, non elective¹¹ and day case⁴ admissions have decreased (Figure 10, Table 1).

⁹ Refer to Appendix 3 – Hospital Specialties by Programme of Care.

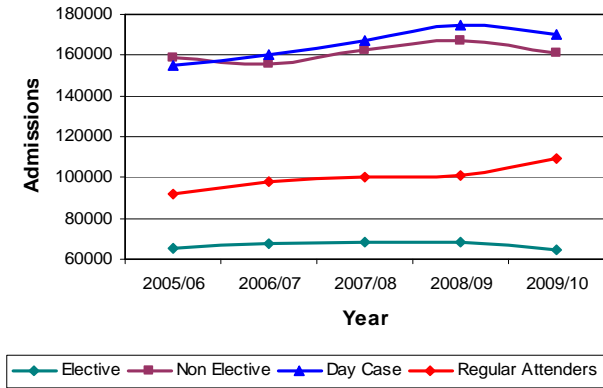
² Refer to Appendix 4: Definitions – Point 12.

¹⁰ Refer to Appendix 4: Definitions – Point 7.

¹¹ Refer to Appendix 4: Definitions – Point 8.

⁴ Refer to Appendix 4: Definitions – Point 10.

Figure 10: Number of Admissions by Patient Type to HSC Hospitals in Northern Ireland under the Acute Programme of Care, (2005/06 - 2009/10)

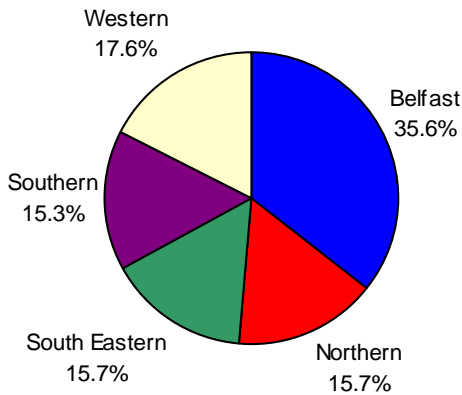


2009/10 Financial Year

Of the 504,888 admissions to hospital under the acute programme of care during 2009/10, 12.9% were elective, 31.9% non elective, 33.6% day cases and 21.6% were regular day/night attenders¹² (Table 3a).

In 2009/10, 35.6% (179,673) of admissions to hospital under the acute programme of care were in Belfast HSC Trust, followed by 17.6% (88,960) in Western HSC Trust (Figure 11, Table 3a).

Figure 11: Total Admissions to Hospital within the Acute Programme of Care by HSC Trust, 2009/10



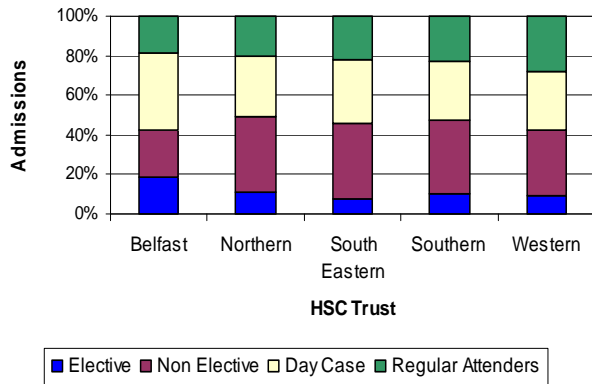
¹² Refer to Appendix 4: Definitions – Point 11.

In 2009/10 over 57.4% of admissions to hospital under the acute programme of care in Belfast HSC Trust were elective (18.5%) or day case (38.9%) admissions, this is the highest proportion for any HSC Trust within Northern Ireland. In addition, Belfast HSC Trust had the lowest proportion of non elective (24.2%) admissions (Figure 12, Table 3a).

Of all the admissions to South Eastern HSC Trust in 2009/10, 7.9% were elective, this is the smallest proportion of elective admissions in any of the five HSC Trusts (Figure 12, Table 3a).

Northern and South Eastern HSC Trusts both had the highest proportion of non elective admissions, accounting for 37.7% and 37.6% respectively of their total admissions (Figure 12, Table 3a).

Figure 12: Proportion of Admissions in the Acute Programme of Care for each Patient Type by HSC Trust, (2009/10)



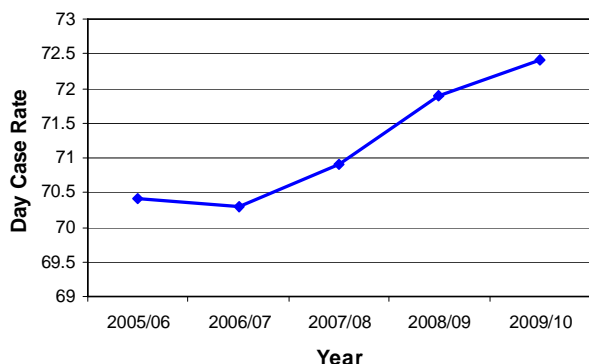
Day Case Rate¹³

5 Year Trend

After a slight decrease between 2005/06 and 2006/07, the day case rate has steadily increased from 70.3% in 2006/07 to 72.4% in 2009/10. The greatest increase occurred between 2007/08 and 2008/09 when the day case rate increased by 1 percentage point from 70.9% to 71.9% of all elective admissions (Figure 13, Table 1).

¹³ Refer to Appendix 4: Definitions – Point 6.

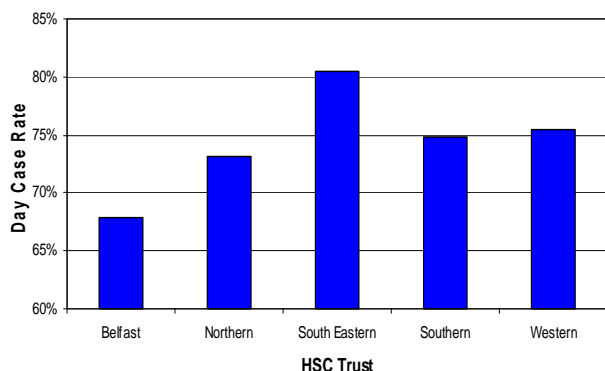
Figure 13: Day Case Rate for Admissions to HSC Hospitals under the Acute Programme of Care, (2005/06 – 2009/10)



2009/10 Financial Year

Within the acute programme of care, South Eastern HSC Trust had a day case rate of 80.5% in 2009/10, this was the highest of the five HSC Trusts. Belfast HSC Trust had the lowest day case rate with 67.8% of elective admissions recorded as day cases (Figure 14, Table 3a).

Figure 14: Day Case Rate for Admissions to HSC Hospitals under the Acute Programme of Care by HSC Trust, (2009/10)



Bed Availability⁵ and Occupancy⁶

5 Year Trend

In the period between 2005/06 and 2009/10, the average number of available beds in the acute programme of care decreased by 4.5% (202) from 4,457 to 4,255. Similarly when comparing

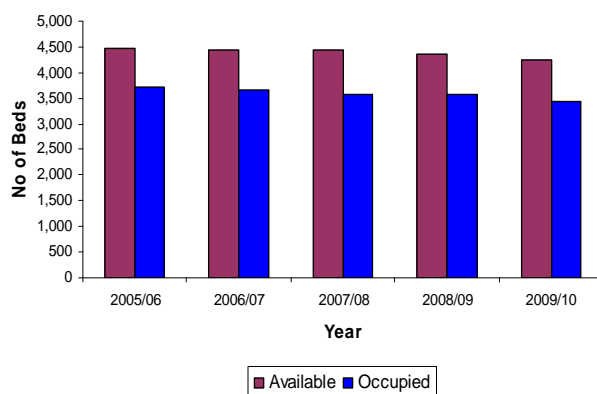
⁵ Refer to Appendix 4: Definitions – point 1.

⁶ Refer to Appendix 4: Definitions – point 3.

the average number of available beds during 2008/09 and 2009/10, we can see a decrease of 2.6% from 4,370 to 4,255 beds (Figure 15, Table 1).

This trend can also be seen when comparing the average number of occupied beds over the same five year period. During 2009/10 there was an average of 3,447 occupied beds. This was a decrease of 122 (-3.4%) on the 3,569 during the previous year, and a decrease of 263 (-7.1%) on the number of occupied beds in 2005/06 (Figure 15, Table 1).

Figure 15: Average Number of Available and Occupied Beds in HSC Hospitals in Northern Ireland within the Acute Programme of Care, (2005/06 - 2009/10)

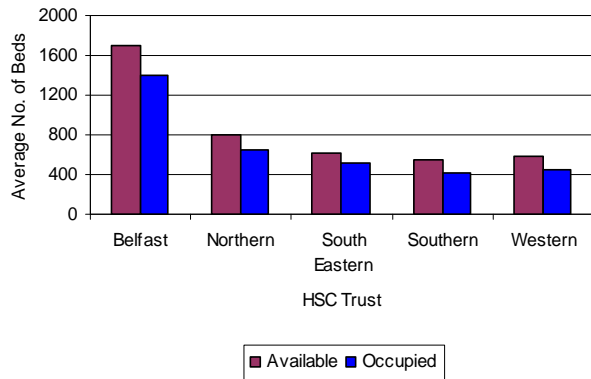


The occupancy rate for acute specialties in hospitals in Northern Ireland was 81.0% during 2009/10; this was a decrease from 81.7% in 2008/09 and a decrease from 83.2% in 2005/06 (Table 1).

Financial Year 2009/10

Of the 4,255 average available beds in Northern Ireland in 2009/10, 39.8% (1,693) were located in Belfast HSC Trust. Southern HSC Trust had the smallest percentage of available beds with 13.1% (557) of the Northern Ireland total (Figure 16, Table 3a).

Figure 16: Average Number of Available and Occupied Beds within the Acute Programme of Care in Northern Ireland by HSC Trust, (2009/10)



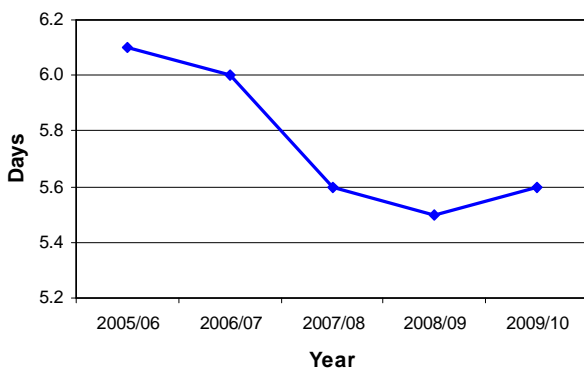
Belfast HSC Trust had the highest occupancy rate with 83% of beds occupied, while Southern HSC Trust had the lowest with 74.6% (Table 3a).

Average Length of Stay⁸

5 Year Trend

The average length of stay for admissions within the acute programme of care has decreased from 6.1 days in 2005/06 to 5.6 days in 2009/10, which is an overall reduction of 0.5 days. However the average length of stay has increased slightly, by 0.1 days, between 2008/09 and 2009/10 (Figure 17, Table 1).

Figure 17: Average Length of Stay for Admissions within the Acute Programme of Care, (2005/06 – 2009/10)

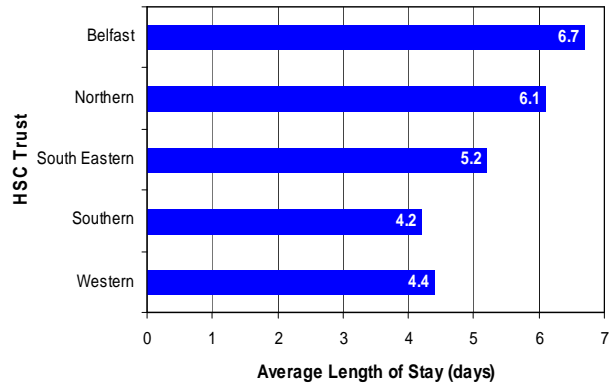


⁸ Refer to Appendix 4: Definitions – Point 2.

Financial Year 2009/10

In 2009/10, admissions under the acute programme of care in Southern HSC Trust had the lowest average length of stay at 4.2 days. This is in contrast to Belfast HSC Trust where the average length of stay was 6.7 days (Figure 18, Table 3a).

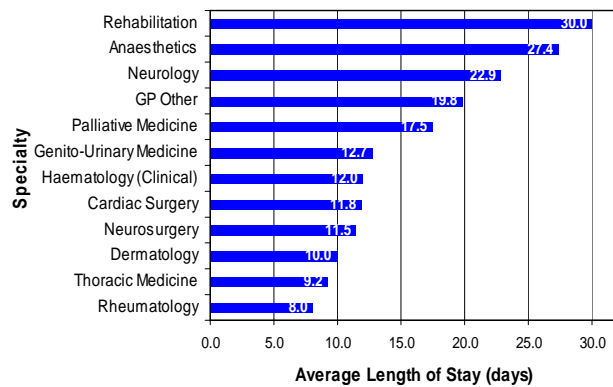
Figure 18: Average Length of Stay for Admissions within the Acute Programme of Care by HSC Trust, (2009/10)



Specialty¹⁴

During 2009/10, the longest average length of stay across all specialties in Northern Ireland was under the rehabilitation specialty where admissions lasted for an average of 30 days (Figure 19, Table 2b).

Figure 19: The Top 12 Specialties that account for the Longest Average Length of Stays in Northern Ireland, (2009/10)



¹⁴ Refer to Appendix 4: Definitions – Point 15.

Other Programmes of Care⁹

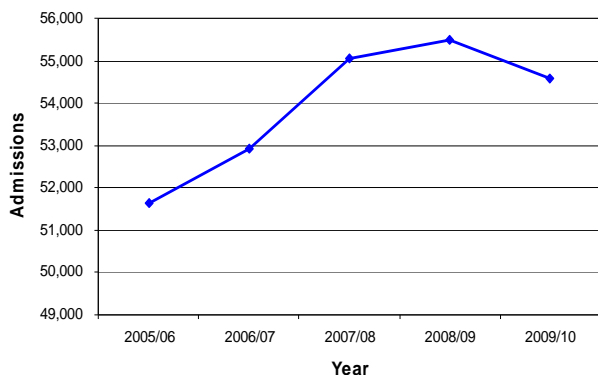
Maternity

Admissions² under the maternity and child health programme of care account for approximately 9% of all admission each year.

5 Year Trend

In 2009/10 there were 54,576 admissions to hospital in Northern Ireland under the maternity programme of care, an increase of 2,942 (+5.7%) when compared with 2005/06 and a decrease of 904 (-1.6%) admissions when compared with 2008/09. The greatest increase in maternity admissions was between 2006/07 and 2007/08 when admissions rose by 2,125 (+4.1%) (Figure 20, Table 1).

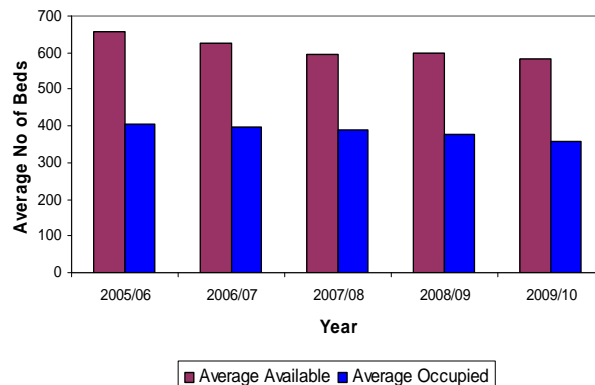
Figure 20: Total Admissions to HSC Hospitals in Northern Ireland under the Maternity Programme of Care, (2005/06 - 2009/10)



The average number of available beds⁵ decreased from 659 in 2005/06 to 582 in 2009/10. Similarly occupied beds⁵ decreased from 405 to 357 over the same period, a fall of 11.8% (Figure 21, Table 1).

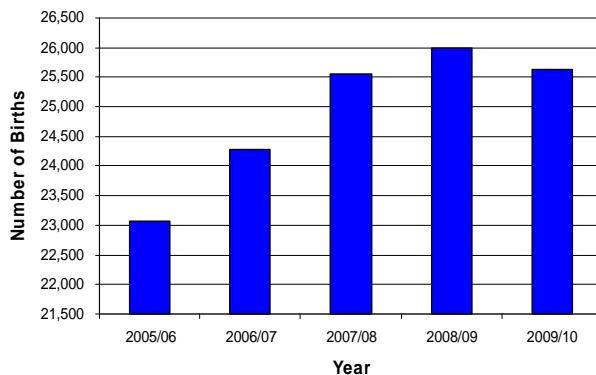
Average available beds were 3.0% lower in 2009/10 than in 2008/09 and average occupied beds fell by 5.7% over the same time period (Figure 21, Table 1).

Figure 21: Average Number of Available and Occupied Beds in HSC Hospitals in Northern Ireland within the Maternity Programme of Care, (2005/06 - 2009/10)



The total number of births¹⁵ in hospital in Northern Ireland has increased by 11.1% from 23,062 births in 2005/06 to 25,619 births in 2009/10. However, between 2008/09 and 2009/10 total births decreased by 375 (Figure 22).

Figure 22: Total Births in HSC Hospitals in Northern Ireland (2005/06 - 2009/10)



Financial Year 2009/10

In 2009/10, over a quarter of births were in Belfast HSC Trust, more than in any other HSC Trust. Northern and Western HSC Trusts had the lowest percentage of births with 16% of births happening in each HSC Trust area (Figure 23, Table 4c).

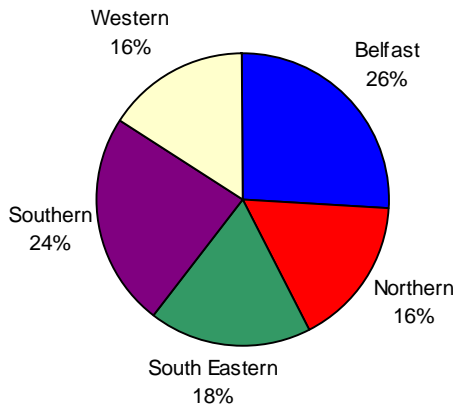
⁹ Refer to Appendix 3 – Hospital Specialties by Programme of Care.

² Refer to Appendix 4: Definitions – Point 12.

⁵ Refer to Appendix 4: Definitions – point 1.

¹⁵ Refer to Appendix 4: Definitions – Point 17.

Figure 23: Total Births in HSC Hospitals in Northern Ireland by HSC Trust (2009/10)



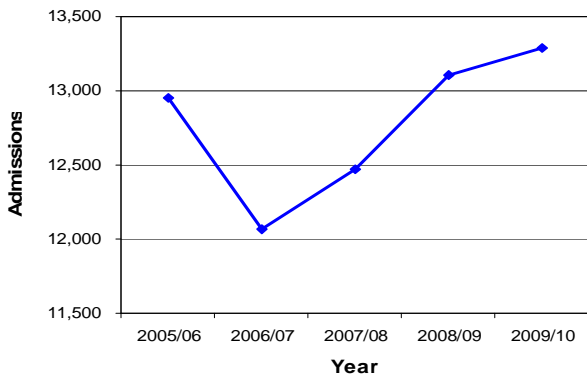
Elderly Care

Admissions under the elderly care programme of care account for approximately 2% of all admission each year.

5 Year Trend

In 2009/10 there were 13,290 admissions to hospital in Northern Ireland under the elderly care programme of care, an increase of 339 (+2.6%) when compared with 2005/06 and an increase of 184 (+1.4%) admissions when compared with 2008/09 (Figure 24, Table 1).

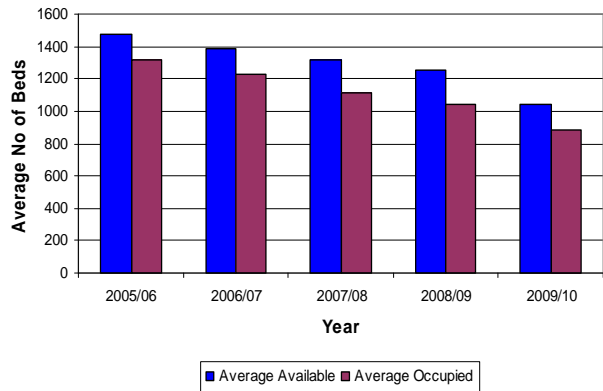
Figure 24: Total Admissions to HSC Hospitals in Northern Ireland under the Elderly Care Programme of Care, (2005/06 - 2009/10)



Numbers of both average available and average occupied beds under the elderly care programme of care, have fallen each year between 2005/06 and 2009/10 resulting in a total decrease of 29.1% (430) in available beds and 33.2% (438) in occupied beds (Figure 25, Table 1).

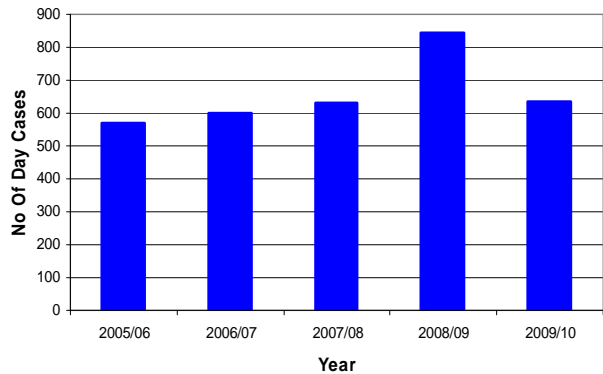
In the last year, available beds has decreased by 17.1% (215), and occupied beds by 15.1% (158) (Figure 25, Table 1).

Figure 25: Average Number of Available and Occupied Beds in HSC Hospitals in Northern Ireland within the Elderly Care Programme of Care, (2005/06 - 2009/10)



In the last five years, the greatest number of day cases in the elderly care programme of care was in 2008/09 with over 200 more day cases than any other year. There were 65 more day cases in 2009/10 than in 2005/06 (Figure 26, Table 1).

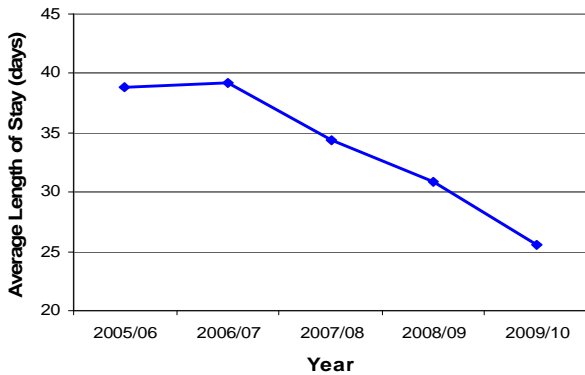
Figure 26: Day Case Admissions to HSC Hospitals in Northern Ireland (2005/06 - 2009/10)



Average length of stay⁸ for elderly care admissions has decreased each year since 2006/07. The greatest decrease occurred between 2008/09 and 2009/10 when average length of stay fell by 5.4 days. In the last five years, average length of stay has decreased by 13.4 days (-34.6%) (Figure 27, Table 1).

⁸ Refer to Appendix 4: Definitions – Point 2.

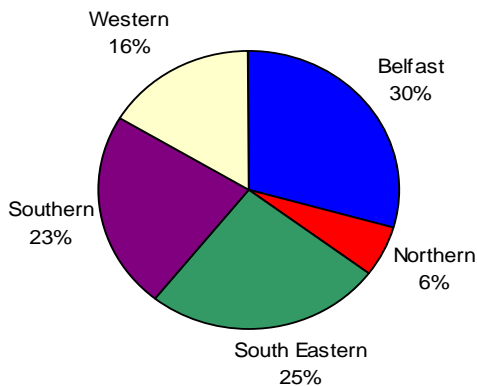
Figure 27: Average Length of Stay for Admissions within the Elderly Care Programme of Care (2005/06 - 2009/10)



Financial Year 2009/10

In 2009/10, 29.5% (3,925) of elderly care admissions were in Belfast HSC Trust while Northern HSC Trust had the fewest accounting for 5.8% (777) of all elderly care admissions (Figure 28, Table 5).

Figure 28: Total Admissions to Hospital within the Elderly Care Programme of Care by HSC Trust, 2009/10



Mental Health

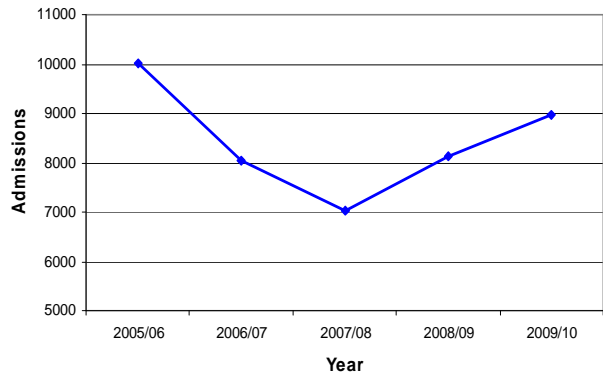
Admissions under the mental health programme of care account for approximately 1% of all admission each year.

5 Year Trend

Total admissions to hospital in Northern Ireland under the mental health programme of care fell each year between 2005/06 and 2007/08 from 10,000 to 7,020, before increasing in each subsequent year to 8,968 in 2009/10. Overall

mental health admissions fell by 1,032 (10%) between 2005/06 and 2008/09 (Figure 29, Table 1).

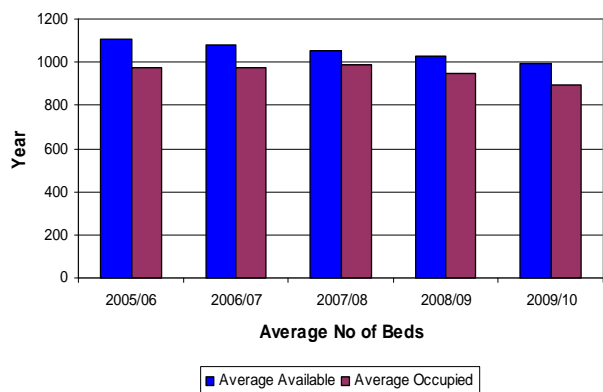
Figure 29: Total Admissions to HSC Hospitals in Northern Ireland under the Mental Health Programme of Care, (2005/06 - 2009/10)



In the period between 2005/06 and 2009/10, the average number of available beds under the mental health programme of care decreased by 10.3% (114) from 1,110 to 996. Similarly when comparing the average number of available beds during 2008/09 and 2009/10, there is a decrease of 3.2% from 1,029 to 996 (Figure 30, Table 1).

This decrease can also be seen when comparing the average number of occupied beds over the same five year period. During 2009/10 there was an average of 897 occupied beds, a decrease of 53 (-5.6%) on the 950 occupied beds during the previous year, and a decrease of 78 (-8.0%) since 2005/06 (Figure 30, Table 1).

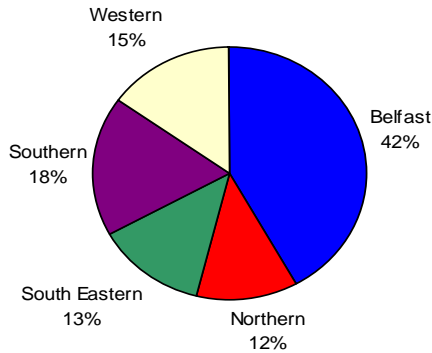
Figure 30: Average Number of Available and Occupied Beds in HSC Hospitals in Northern Ireland within the Mental Health Programme of Care, (2005/06 - 2009/10)



2009/10 Financial Year

In 2009/10, 41.9% (3,757) of a total of 8,968 admissions under the mental health programme of care were in Belfast HSC Trust. Northern HSC Trust has the lowest percentage of mental health admissions with 11.9% (1,068) of the total (Figure 31, Table 6).

Figure 31: Total Admissions to Hospital within the Mental Health Programme of Care by HSC Trust, 2009/10



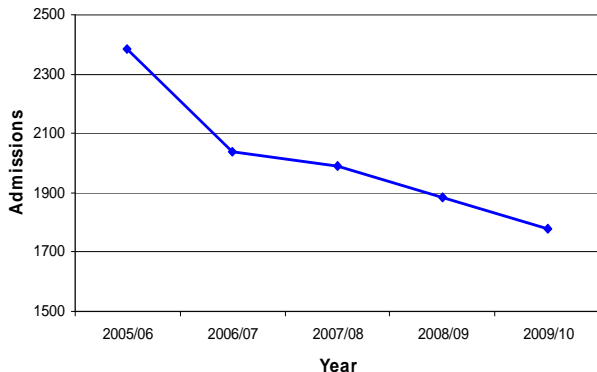
Learning Disability

Admissions under the learning disability programme of care account for approximately 1% of all admission each year.

5 Year Trend

There has also been a decrease in the total number of learning disability admissions over the same period from 2,387 in 2005/06 to 1,779 in 2009/10. This represents a drop of 608 admissions (25.5%) (Figure 32, Table 1).

Figure 32: Total Number of Admissions to HSC Hospitals in Northern Ireland within the Learning Disability Programme of Care, (2005/06 - 2009/10)



The number of both average available and occupied beds in the learning disability programme of care has decreased each year between 2005/06 and 2009/10 from 538 to 399 available and from 475 to 369 occupied (Figure 33, Table 1).

Figure 33: Average Number of Available and Occupied Beds in HSC Hospitals in Northern Ireland within the Learning Disability Programme of Care, (2005/06 - 2009/10)

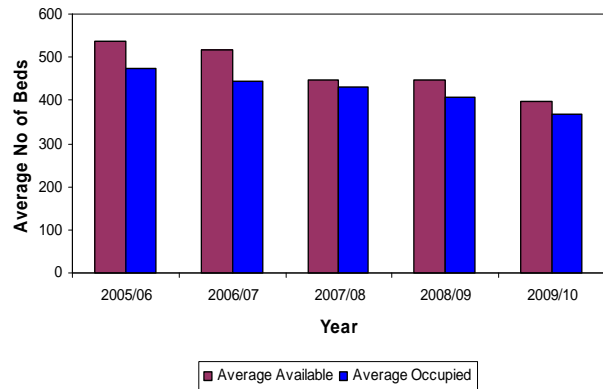


Table 1: Selected Activity Trends by Programme of Care, 2005/06 - 2009/10

Programme of Care	Activity Indicator	2005/06	2006/07	2007/08	2008/09	2009/10	% Change 08/09-09/10	% Change 05/06-09/10
All POC's	Average Available Beds	8237.6	8048.6	7853.1	7706.0	7275.5	-5.6	-11.7
	Average Occupied Beds	6884.3	6692.7	6492.8	6343.9	5951.6	-6.2	-13.5
	Inpatients	296,461	295,104	305,563	310,993	299,878	-3.6	1.2
	Day Cases	250,883	260,893	268,845	278,510	283,623	1.8	13.0
	Total Admissions	547,344	555,997	574,408	589,503	583,501	-1.0	6.6
	Average Length of Stay	8.5	8.3	7.8	7.4	7.2	-2.7	-14.5
	% Occupancy	83.6	83.2	82.7	82.3	81.8	-0.6	-2.1
	POC 1	Average Available Beds	4457.1	4439.1	4438.6	4369.5	4255.1	-2.6
	Average Occupied Beds	3709.7	3649.5	3575.9	3569.0	3446.5	-3.4	-7.1
	Elective Inpatients	65,120	67,517	68,466	68,327	64,845	-5.1	-0.4
	Non Elective Inpatients	158,575	155,458	162,574	167,361	161,025	-3.8	1.5
	Day Cases	154,720	160,082	166,894	174,500	169,790	-2.7	9.7
	Regular Day and Night Attenders	91,957	97,881	99,939	100,720	109,228	8.4	18.8
	Total Admissions	470,372	480,938	497,873	510,908	504,888	-1.2	7.3
	Day Case Rate	70.4	70.3	70.9	71.9	72.4	0.7	2.9
	Average Length of Stay	6.1	6.0	5.6	5.5	5.6	0.8	-8.0
	% Occupancy	83.2	82.2	80.6	81.7	81.0	-0.8	-2.7
POC 2	Average Available Beds	659.0	621.4	596.5	599.7	581.8	-3.0	-11.7
	Average Occupied Beds	404.6	394.8	387.6	377.1	356.7	-5.4	-11.8
	Inpatients	50,550	51,769	54,069	54,527	53,566	-1.8	6.0
	Day Cases	1,084	1,140	985	953	1,010	6.0	-6.8
	Total Admissions	51,634	52,909	55,054	55,480	54,576	-1.6	5.7
	Average Length of Stay	2.9	2.8	2.6	2.5	2.4	-3.7	-16.8
	% Occupancy	61.4	63.5	65.0	62.9	61.3	-2.5	-0.1

Table 1: Continued

Programme of Care	Activity Indicator	2005/06	2006/07	2007/08	2008/09	2009/10	% Change 08/09-09/10	% Change 05/06-09/10
POC 4	Average Available Beds	1473.8	1391.8	1317.5	1259.0	1044.2	-17.1	-29.1
	Average Occupied Beds	1320.4	1231.4	1115.0	1039.6	882.4	-15.1	-33.2
	Inpatients	12,380	11,471	11,838	12,263	12,654	3.2	2.2
	Day Cases	571	601	632	843	636	-24.6	11.4
	Total Admissions	12,951	12,072	12,470	13,106	13,290	1.4	2.6
	Average Length of Stay	38.9	39.2	34.4	30.9	25.5	-17.7	-34.6
	% Occupancy	89.6	88.5	84.6	82.6	84.5	2.3	-5.7
	POC 5	Average Available Beds	1110.2	1078.7	1054.5	1029.3	995.5	-3.3
Average Occupied Beds		975.1	972.4	985.0	950.3	896.9	-5.6	-8.0
Inpatients		7,456	6,875	6,651	6,629	6,018	-9.2	-19.3
Day Cases		2,544	1,166	369	1,494	2,950	97.5	16.0
Total Admissions		10,000	8,041	7,020	8,123	8,968	10.4	-10.3
Average Length of Stay		47.7	51.6	54.1	52.3	54.4	4.0	14.0
% Occupancy		87.8	90.1	93.4	92.3	90.1	-2.4	2.6
POC 6		Average Available Beds	537.5	517.6	446.0	448.5	398.9	-11.1
	Average Occupied Beds	474.5	444.6	429.3	407.9	369.1	-9.5	-22.2
	Inpatients	2,380	2,014	1,965	1,886	1,770	-6.2	-25.6
	Day Cases	7	23	26	0	9	-	28.6
	Total Admissions	2,387	2,037	1,991	1,886	1,779	-5.7	-25.5
	Average Length of Stay	72.8	80.6	79.7	78.9	76.1	-3.6	4.6
	% Occupancy	88.3	85.9	96.3	90.9	92.5	1.7	4.8

Source: Hospital Inpatient System and KH03a

Table 2a: All Programmes of Care Inpatient and Day Case Activity Data by Hospital/HSC Trust, 2009/10

Hospital/ HSC Trust	Average Available Beds	Average Occupied Beds	Day Cases	Inpatients	% Occupancy	Throughput	Average Length of Stay	Turnover Interval
Beechcroft CAMHS ¹⁶	12.0	13.6	30	29	100.0	2.4	171.2	0.0
Belfast City	533.7	441.9	44,591	22,440	82.8	42.0	7.2	1.5
Cancer Centre ¹⁷	84.6	76.0	13,350	3,671	89.9	43.4	7.6	0.9
Forster Green	37.6	32.0	0	352	85.2	9.4	33.2	5.8
Knockbracken	296.0	240.1	0	373	81.1	1.3	235.0	54.7
Mater Infirmorum	291.0	247.4	7,683	13,520	85.0	46.5	6.7	1.2
Muckamore Abbey	255.8	242.8	0	136	94.9	0.5	651.6	34.9
Musgrave Park	256.6	200.1	11,326	8,669	78.0	33.8	8.4	2.4
RBHSC	96.7	78.4	4,304	6,036	81.1	62.4	4.7	1.1
Royal Maternity	157.9	110.3	1,012	11,312	69.8	71.6	3.6	1.5
Royal Victoria	672.3	577.7	21,820	29,679	85.9	44.1	7.1	1.2
Shaftesbury Square	0.0	0.0	2,645	0	0.0	0.0	0.0	0.0
Windsor	35.0	30.7	0	268	87.8	7.7	41.9	5.8
Belfast HSCT	2729.2	2291.1	106,761	96,485	83.9	35.4	8.7	1.7
Antrim	453.8	347.2	25,125	28,275	76.5	62.3	4.5	1.4
Braid Valley	36.3	29.9	0	389	82.5	10.7	28.1	6.0
Causeway	253.5	206.8	7,497	13,959	81.6	55.1	5.4	1.2
Dalriada	32.0	23.9	0	402	74.8	12.6	21.7	7.3
Holywell	220.5	203.6	0	855	92.4	3.9	86.9	7.2
Mid Ulster	94.7	83.8	3,734	2,996	88.4	31.6	10.2	1.3
Moyle	20.5	12.7	0	132	61.7	6.4	35.0	21.7
Robinson Memorial	25.0	20.4	0	169	81.7	6.8	44.1	9.9
Whiteabbey	104.1	81.0	4,155	2,799	77.8	26.9	10.6	3.0
Whiteabbey PNU ¹⁸	12.3	9.5	0	75	77.2	6.1	46.2	13.6
Northern HSCT	1252.7	1018.9	40,511	50,051	81.3	40.0	7.4	1.7

Table 2a: Continued

Hospital/ HSC Trust	Average Available Beds	Average Occupied Beds	Day Cases	Inpatients	% Occupancy	Throughput	Average Length of Stay	Turnover Interval
Ards	24.2	20.6	6,173	525	85.1	21.7	14.3	2.5
Bangor	20.0	16.2	1	513	81.1	25.7	11.5	2.7
Downe	64.0	48.4	2,859	3,751	75.6	58.6	4.7	1.5
Downshire	135.9	124.1	0	604	91.3	4.4	75.0	7.1
Lagan Valley	144.2	95.6	5,873	7,409	66.3	51.4	4.7	2.4
Lagan Valley PNU	40.0	39.1	0	522	97.7	13.1	27.3	0.6
Thompson House	35.0	31.3	0	268	89.4	7.7	42.6	5.0
Ulster	556.4	465.8	29,050	34,772	83.7	62.5	4.9	1.0
Ulster MHU ¹⁹	21.0	20.8	0	236	99.0	11.2	32.2	0.3
South Eastern HSCT	1040.7	861.9	43,956	48,600	82.8	46.7	6.5	1.3
Banbridge	0.0	0.0	932	0	0.0	0.0	0.0	0.0
Bluestone	69.2	66.5	0	1,002	96.1	14.5	24.2	1.0
Craigavon Area	499.3	365.0	15,522	35,696	73.1	71.5	3.7	1.4
Daisy Hill	249.7	172.1	19,170	15,457	68.9	61.9	4.1	1.8
Longstone	82.2	72.2	0	237	87.8	2.9	111.2	15.4
Lurgan	56.3	50.5	0	656	89.7	11.6	28.1	3.2
Mullinure	24.4	18.6	0	283	76.2	11.6	24.0	7.5
South Tyrone	33.9	29.0	5,349	336	85.6	9.9	31.5	5.3
St Luke's	130.1	101.2	0	703	77.8	5.4	52.5	15.0
Southern HSCT	1145.1	875.1	40,973	54,370	76.4	47.5	5.9	1.8

Table 2a: Continued

Hospital/ HSC Trust	Average Available Beds	Average Occupied Beds	Day Cases	Inpatients	% Occupancy	Throughput	Average Length of Stay	Turnover Interval
Altnagelvin Area	500.2	410.4	29,145	31,905	82.0	63.8	4.7	1.0
Erne	216.8	160.9	3,845	14,382	74.2	66.3	4.1	1.4
Gransha	109.0	106.0	0	681	97.2	6.2	56.8	1.6
Lakeview	53.0	47.5	5	226	89.7	4.3	76.7	8.8
NWIH ²⁰	3.7	2.3	0	21	62.2	5.7	40.0	24.3
Tyrone & Fermanagh	100.7	83.4	0	678	82.9	6.7	44.9	9.3
Tyrone County	46.3	33.0	18,427	2,210	71.2	47.7	5.4	2.2
Waterside	78.0	61.2	0	269	78.5	3.4	83.0	22.8
Western HSCT	1107.8	904.7	51,422	50,372	81.7	45.5	6.6	1.5
NI Total	7275.5	5951.7	283,623	299,878	81.8	41.2	7.2	1.6

Source: Hospital Inpatient System & KH03a

¹⁶ Refer to Appendix 5: Explanatory Notes – Point 20.

¹⁷ Refer to Appendix 5: Explanatory Notes – Point 15.

¹⁸ Refer to Appendix 5: Explanatory Notes – Point 10.

¹⁹ Refer to Appendix 5: Explanatory Notes – Point 19.

²⁰ Refer to Appendix 5: Explanatory Notes – Point 9.

Table 2b: All Programmes of Care Inpatient and Day Case Activity Data by Specialty, 2009/2010

Specialty	Average Available Beds	Average Occupied Beds	Day Cases	Inpatients	% Occupancy	Throughput	Average Length of Stay	Turnover Interval
Accident & Emergency	47.5	18.3	19	7,911	38.6	166.7	0.8	1.3
Anaesthetics	69.4	55.5	2	739	80.0	10.7	27.4	6.8
Cardiac Surgery	41.8	30.3	0	934	72.5	22.4	11.8	4.5
Cardiology	290.8	237.6	5664	20,600	81.7	70.8	4.2	0.9
Child & Adolescent Psychiatry	27.0	26.0	30	84	96.4	3.1	113.1	4.2
Clinical Oncology	53.9	53.8	12369	2,515	99.9	46.7	7.8	0.0
Dermatology ²¹	19.1	15.5	4627	567	80.9	29.7	10.0	2.3
Endocrinology	11.4	9.9	157	629	87.5	55.4	5.8	0.8
ENT ²²	88.5	47.2	5448	10,099	53.3	114.1	1.7	1.5
Forensic Psychiatry	34.0	32.6	0	17	95.8	0.5	699.2	30.8
Gastroenterology	12.6	12.6	9,574	660	100.0	52.5	7.0	0.0
General Medicine ²³	1,380.3	1,225.5	17,193	62,146	88.8	45.0	7.2	0.9
General Surgery	675.8	543.5	31,389	39,800	80.4	58.9	5.0	1.2
Genito-Urinary Medicine	0.6	0.6	1	18	100.0	28.7	12.7	0.0
Geriatric Medicine	751.7	641.2	636	11,947	85.3	15.9	19.6	3.4
GP Other	109.0	85.0	5,424	1,565	78.0	14.4	19.8	5.6
Gynaecology ²⁴	131.3	87.5	8,627	12,768	66.6	97.2	2.5	1.3
Haematology	0.0	0.0	70	0	0.0	0.0	0.0	0.0
Haematology (Clinical)	63.4	59.7	11,227	1,814	94.2	28.6	12.0	0.7
Infectious Diseases	8.7	3.1	0	375	35.7	43.0	3.0	5.5
Learning Disability	398.9	369.1	9	1,770	92.5	4.4	76.1	6.1
Medical Oncology	25.5	17.0	5,056	1,111	66.6	43.6	5.6	2.8
Mental Illness	934.5	838.3	275	5,917	89.7	6.3	51.7	5.9
Nephrology	101.3	74.0	100,365	3,683	73.0	36.4	7.3	2.7
Neurology	84.2	77.0	777	1,227	91.4	14.6	22.9	2.2
Neurosurgery	43.0	39.7	285	1,262	92.3	29.4	11.5	1.0
Obstetrics ²⁵	341.0	227.8	1,010	30,403	66.8	89.2	2.7	1.4
Old Age Psychiatry	292.5	241.2	0	707	82.5	2.4	124.5	26.5
Ophthalmology ²⁶	15.4	10.2	14,982	1,725	66.4	112.0	2.2	1.1
Oral Surgery	13.3	9.2	2,979	1,970	69.3	147.9	1.7	0.8

Table 2b: Continued

Specialty	Average Available Beds	Average Occupied Beds	Day Cases	Inpatients	% Occupancy	Throughput	Average Length of Stay	Turnover Interval
Paediatric Dentistry	0.0	0.0	8	0	0.0	0.0	0.0	0.0
Paediatric Surgery	0.0	0.0	605	21	100.0	1533.0	0.2	0.0
Paediatrics ²⁷	343.9	224.9	4,973	23,234	65.4	67.6	3.5	1.9
Pain Management	3.9	0.0	3,413	28	0.6	7.1	0.3	50.9
Palliative Medicine	4.9	3.5	14	72	71.0	14.8	17.5	7.1
Plastic Surgery	30.7	23.7	1,825	2,375	77.3	77.4	3.6	1.1
Psychotherapy	0.0	0.0	2,645	0	0.0	0.0	0.0	0.0
Radiology	0.1	0.1	220	18	100.0	234.6	1.6	0.0
Rehabilitation	94.9	77.6	2,221	942	81.8	9.9	30.0	6.7
Rheumatology	22.3	14.5	10,527	658	64.8	29.5	8.0	4.3
T & O Surgery	338.1	282.1	4,092	15,441	83.4	45.7	6.7	1.3
Thoracic Medicine	18.8	15.6	1,403	619	83.0	32.9	9.2	1.9
Thoracic Surgery	21.8	16.7	419	849	76.9	39.0	7.2	2.2
Urology	89.0	75.2	13,063	7,495	84.5	84.2	3.7	0.7
Well Babies (Obstetrics)	92.3	44.3	0	7,889	48.0	85.5	2.0	2.2
Well Babies (Paediatrics)	148.5	84.6	0	15,274	57.0	102.8	2.0	1.5
NI Total	7,275.5	5,951.6	283,623	299,878	81.8	41.2	7.2	1.6

Source: Hospital Inpatient System & KH03a

²¹ Refer to Appendix 5: Explanatory Notes – Point 16.

²² Refer to Appendix 5: Explanatory Notes – Point 11.

²³ Refer to Appendix 5: Explanatory Notes – Point 12.

²⁴ Refer to Appendix 5: Explanatory Notes – Point 14.

²⁵ Refer to Appendix 5: Explanatory Notes – Point 18.

²⁶ Refer to Appendix 5: Explanatory Notes – Point 17.

²⁷ Refer to Appendix 5: Explanatory Notes – Point 13.

Table 2c: All Programmes of Care Availability and Use of Operating Theatres by HSC Trust, 2009/10

Hospital/ HSC Trust	Scheduled Sessions			Cases operated on		
	Held	Cancelled	Total Intended	In Scheduled Sessions	Outside Scheduled Sessions	Total
Belfast City	3,436	137	3,573	10,038	1,523	11,561
Cancer Centre	61	0	61	93	0	93
Mater Infirmorum	1,763	167	1,930	6,844	719	7,563
Musgrave Park	3,517	0	3,517	9,277	530	9,807
RBHSC	1,000	292	1,293	2,881	1,050	3,931
Royal Maternity	250	0	250	1,127	1,489	2,616
Royal Victoria	7,115	410	7,525	16,136	1,722	17,858
Belfast HSCT	17,142	1,006	18,149	46,396	7,033	53,429
Antrim	1,857	41	1,898	5,379	1,973	7,352
Causeway	2,298	0	2,298	8,710	1,401	10,111
Mid Ulster	904	14	918	3,757	119	3,876
Whiteabbey	388	159	547	1,280	78	1,358
Northern HSCT	5,447	214	5,661	19,126	3,571	22,697
Ards	470	38	508	2,159	29	2,188
Downe	422	4	426	1,565	12	1,577
Lagan Valley	1,059	8	1,067	4,213	226	4,439
Ulster	3,613	70	3,683	7,486	3,149	10,635
South Eastern HSCT	5,564	120	5,684	15,423	3,416	18,839
Daisy Hill	1,096	28	1,072	3,320	1,317	4,637
Craigavon Area	3,406	2	3,408	11,988	1,310	13,298
South Tyrone	901	8	905	5,014	0	5,014
Southern HSCT	5,403	38	5,385	20,322	2,627	22,949

Table 2c: Continued

Hospital/ HSC Trust	Scheduled Sessions			Cases operated on		
	Held	Cancelled	Total Intended	In Scheduled Sessions	Outside Scheduled Sessions	Total
Altnagelvin Area	4,821	19	4,840	14,676	1,820	16,496
Erne	767	113	880	2,280	1,308	3,588
Tyrone County	697	145	842	2,438	297	2,735
Western HSCT	6,285	277	6,562	19,394	3,425	22,819
NI Total	39,841	1,655	41,441	120,661	20,072	140,733

Source: KH08

Table 2d: All Programmes of Care Availability and Use of Operating Theatres by Specialty, 2009/10

Hospital/ HSC Trust	Scheduled Sessions			Cases operated on		
	Held	Cancelled	Total Intended	In Scheduled Sessions	Outside Scheduled Sessions	Total
Anaesthetics	10	0	10	84	51	135
Cardiac Surgery	935	147	1,082	932	141	1,073
Cardiology	1	0	1	0	1	1
Clinical Oncology	61	0	61	93	0	93
Dermatology	119	0	119	483	47	530
ENT	3,421	66	3,488	12,454	500	12,954
Gastroenterology	123	0	123	995	0	995
General Medicine	457	0	457	2,122	326	2,448
General Surgery	10,092	503	10,595	27,535	7,509	35,044
GP Other	713	6	719	2,972	0	2,972
Gynaecology	4,279	154	4,431	14,782	2,213	16,995
Mental Illness	125	56	181	220	0	220
Nephrology	211	50	261	350	61	411
Neurosurgery	660	49	709	930	508	1,438
Obstetrics	1,224	21	1,245	3,145	3,873	7,018
Ophthalmology	2,176	51	2,227	10,994	361	11,355
Oral Surgery	818	60	872	2,466	495	2,961
Other	372	4	376	1,889	38	1,927
Paediatric Dentistry	243	115	312	1,499	22	1,521
Paediatric Surgery	518	69	587	1,629	529	2,158
Paediatrics	22	0	22	61	0	61
Pain Management	461	8	469	2,365	83	2,448
Plastic Surgery	1,419	134	1,553	2,341	867	3,208
Rheumatology	0	0	0	1	0	1
T & O Surgery	8,384	77	8,461	18,428	1,649	20,077
Thoracic Medicine	14	0	14	65	0	65
Thoracic Surgery	436	8	444	782	80	862
Urology	2,547	77	2,622	11,044	718	11,762
NI Total	39,841	1,655	41,441	120,661	20,072	140,733

Source: KH08

Table 3a: Acute Services Inpatient and Day Case Activity Data by Hospital/HSC Trust, 2009/10

Hospital/ HSC Trust	Average Available Beds	Average Occupied Beds	Regular Day and Night Day Cases Attendees	Regular Day and Night Day Cases Attendees	Elective Inpatients	Non Elective Inpatients	% Occupancy	% Throughput	Average Length of Stay	Turnover Interval	% Day Cases
Belfast City	466.2	377.1	11,583	33,008	9,161	11,962	80.9	45.3	6.5	1.5	55.8
Cancer Centre ¹⁷	84.6	76.0	13,350	0	2,577	1,092	89.9	43.4	7.6	0.9	83.8
Forster Green	22.6	20.1	0	0	309	8	89.1	14.0	23.1	2.8	0.0
Mater Infirmorum	207.8	184.1	7,566	0	2,447	8,121	88.6	50.9	6.4	0.8	75.6
Musgrave Park	178.9	133.0	11,322	0	6,370	527	74.3	38.6	7.0	2.4	64.0
RBHSC	96.7	78.4	4,304	0	1,888	4,148	81.1	62.4	4.7	1.1	69.5
Royal Maternity	45.0	26.8	3	0	0	323	59.5	7.2	30.2	20.6	100.0
Royal Victoria	591.2	508.4	21,820	0	10,493	17,291	86.0	47.0	6.7	1.1	67.5
Belfast HSCT	1,692.8	1,403.8	69,948	33,008	33,245	43,472	82.9	45.3	6.7	1.4	67.8
Antrim	371.1	303.6	8,878	16,247	5,680	16,595	81.8	60.0	5.0	1.1	61.0
Braid Valley	4.1	3.5	0	0	1	68	86.2	16.8	18.7	3.0	0.0
Causeway Hospital	182.4	149.0	7,497	0	2,411	7,975	81.7	56.9	5.2	1.2	75.7
Dalriada	32.0	23.9	0	0	229	173	74.8	12.6	21.7	7.3	0.0
Mid Ulster	94.7	83.8	3,734	0	267	2,729	88.4	31.6	10.2	1.3	93.3
Moyle	16.1	10.5	0	0	4	103	65.6	6.7	36.0	18.8	0.0
Robinson Memorial	25.0	20.4	0	0	24	145	81.7	6.8	44.1	9.9	0.0
Whiteabbey	75.2	58.5	4,154	1	299	2,182	77.7	33.0	8.6	2.5	93.3
Northern HSCT	800.6	653.3	24,263	16,248	8,915	29,970	81.6	48.6	6.1	1.4	73.1
Ards	17.8	14.7	6,167	6	30	391	82.5	23.7	12.7	2.7	99.5
Bangor	20.0	16.2	1	0	4	509	81.1	25.7	11.5	2.7	20.0
Downe	58.0	44.9	2,859	0	24	3,635	77.4	63.1	4.5	1.3	99.2
Lagan Valley	82.5	60.0	5,872	0	794	3,830	72.7	56.0	4.7	1.8	88.1
Thompson House	35.0	31.3	0	0	255	13	89.4	7.7	42.6	5.0	0.0
Ulster	411.2	351.4	11,041	17,377	5,194	21,469	85.5	64.8	4.8	0.8	68.0
South Eastern HSCT	624.5	518.5	25,940	17,383	6,301	29,847	83.0	57.9	5.2	1.1	80.5

Table 3a: Continued

Hospital/ HSC Trust	Average Available Beds	Average Occupied Beds	Regular Day and Night Day Cases Attendees	Elective Inpatients	Non Elective Inpatients	% Occupancy	% Throughput	Average Length of Stay	Turnover Interval	% Day Cases	
Banbridge	0.0	0.0	932	0	0	0.0	0.0	0.0	0.0	100.0	
Craigavon Area	377.5	278.6	12,046	3,473	6,550	19,249	73.8	68.3	3.9	64.8	
Daisy Hill	161.6	120.6	4,964	14,205	1,255	9,246	74.6	65.0	4.2	79.8	
Lurgan	17.5	15.8	0	0	25	90	90.0	6.6	50.0	5.5	
South Tyrone	0.0	0.0	5,349	0	4	0	0.0	0.0	0.0	99.9	
Southern HSCT	556.6	414.9	23,291	17,678	7,834	28,585	74.6	65.4	4.2	1.4	74.8
Altnagelvin Area	406.7	328.0	17,860	11,127	7,408	17,739	80.7	61.8	4.8	1.1	70.7
Erne	148.5	108.4	3,845	0	1,013	9,423	73.0	70.3	3.8	1.4	79.1
Tyrone County	25.5	19.4	4,643	13,784	129	1,989	76.2	83.2	3.3	1.0	97.3
Western HSCT	580.6	455.9	26,348	24,911	8,550	29,151	78.5	64.9	4.4	1.2	75.5
NI Total	4,255.1	3,446.5	169,790	109,228	64,845	161,025	81.0	53.1	5.6	1.3	72.4

Source: Hospital Inpatient System & KH03a

¹⁷ Refer to Appendix 5: Explanatory Notes – Point 15.

Table 3b: Acute Services Availability and Use of Operating Theatres, by HSC Trust (2009/10)

Hospital/ HSC Trust	Scheduled Sessions			Cases operated on		
	Held	Cancelled	Total Intended	In Scheduled Sessions	Outside Scheduled Sessions	Total
Belfast City	3,436	137	3,573	10,038	1,523	11,561
Cancer Centre	61	0	61	93	0	93
Mater Infirmorum	1,673	146	1,819	6,668	528	7,196
Musgrave Park	3,517	0	3,517	9,277	530	9,807
RBHSC	1,000	292	1,293	2,881	1,050	3,931
Royal Victoria	7,115	410	7,525	16,136	1,722	17,858
Belfast HSCT	16,802	985	17,788	45,093	5,353	50,446
Antrim	1,597	41	1,638	4,697	1,396	6,093
Causeway Hospital	2,179	0	2,179	8,551	1,145	9,696
Mid Ulster	904	14	918	3,757	119	3,876
Whiteabbey	388	159	547	1,280	78	1,358
Northern HSCT	5,068	214	5,282	18,285	2,738	21,023
Ards	470	38	508	2,159	29	2,188
Downe	422	4	426	1,565	12	1,577
Lagan Valley	1,059	8	1,067	4,213	226	4,439
Ulster	3,360	70	3,430	7,089	2,444	9,533
South Eastern HSCT	5,311	120	5,431	15,026	2,711	17,737
Craigavon Area	3,406	2	3,408	11,988	1,310	13,298
Daisy Hill	1,096	28	1,072	3,319	1,313	4,632
South Tyrone	901	8	905	5,014	0	5,014
Southern HSCT	5,403	38	5,385	20,321	2,623	22,944

Table 3b: Continued

Hospital/ HSC Trust	Scheduled Sessions			Cases operated on		
	Held	Cancelled	Total Intended	In Scheduled Sessions	Outside Scheduled Sessions	Total
Altnagelvin Area	4,487	19	4,506	14,052	1,510	15,562
Erne	767	113	880	2,144	967	3,111
Tyrone County	654	89	743	2,375	297	2,672
Western HSCT	5,908	221	6,129	18,571	2,774	21,345
NI Total	38,492	1,578	40,015	117,296	16,199	133,495

Source: KH08

Table 3c: Acute Services Private Patient Activity Data by Hospital/HSC Trust, 2009/10

Hospital/ HSC Trust	Finished Consultant Episodes		
	Inpatients	Day Cases	Total
Belfast City	105	264	369
Cancer Centre	44	127	171
Mater	12	37	49
Musgrave Park	18	9	27
RBHSC	4	0	4
Royal Maternity	1	0	1
Royal Victoria	307	263	570
Belfast HSCT	491	700	1,191
Antrim	28	76	104
Causeway	32	47	79
Mid Ulster	0	8	8
Whiteabbey	1	49	50
Northern HSCT	61	180	241
Ards	0	99	99
Downe	0	2	2
Lagan Valley	8	24	32
Ulster	50	189	239
South Eastern HSCT	58	314	372
Craigavon	2	23	25
Daisy Hill	1	0	1
Southern HSCT	3	23	26
Altnagelvin	282	250	532
Erne	1	0	1
Western HSCT	283	250	533
NI Total	896	1,467	2,363

Source: Hospital Inpatient System

Table 4a: Maternity and Child Health Inpatient and Day Case Activity Data by Hospital/HSC Trust, 2009/10

Hospital/ HSC Trust	Average Available Beds	Average Occupied Beds	Day Cases	Inpatients	% Occupancy	Throughput	Average Length of Stay	Turnover Interval
Mater Infirmorum	28.9	15.4	0	2,582	53.2	89.3	2.2	1.9
Royal Maternity	112.9	83.5	1,009	10,989	73.9	97.3	2.8	1.0
Belfast HSCT	141.8	98.9	1,009	13,571	69.7	95.7	2.7	1.2
Antrim	82.3	43.3	0	5,990	52.6	72.8	2.6	2.4
Causeway Hospital	38.2	22.3	0	3,331	58.3	87.2	2.4	1.7
Northern HSCT	120.5	65.6	0	9,321	54.4	77.4	2.6	2.2
Lagan Valley	34.0	12.8	1	2,301	37.7	67.7	2.0	3.4
Ulster	67.2	38.5	0	6,267	57.2	93.2	2.2	1.7
South Eastern HSCT	101.2	51.2	1	8,568	50.6	84.6	2.2	2.1
Craigavon Area	90.5	55.9	0	8,539	61.7	94.3	2.4	1.5
Daisy Hill	54.9	26.8	0	4,532	48.8	82.5	2.2	2.3
Southern HSCT	145.5	82.7	0	13,071	56.8	89.8	2.3	1.8
Altnagelvin Area	46.7	37.6	0	5,861	80.7	125.6	2.3	0.6
Erne	26.1	20.8	0	3,174	79.5	121.6	2.4	0.6
Western HSCT	72.8	58.4	0	9,035	80.3	124.2	2.4	0.6
NI Total	581.8	356.7	1,010	53,566	61.3	92.1	2.4	1.5

Source: KH03a

Table 4b: Maternity and Child Health Availability and Use of Operating Theatres, by HSC Trust (2009/10)

Hospital/ HSC Trust	Scheduled Sessions			Cases operated on		
	Held	Cancelled	Total Intended	In Scheduled Sessions	Outside Scheduled Sessions	Total
Mater Infirmorum	90	21	111	176	191	367
Royal Maternity	250	0	250	1,127	1,489	2,616
Belfast HSCT	340	21	361	1,303	1,680	2,983
Antrim	260	0	260	682	577	1,259
Causeway Hospital	119	0	119	159	256	415
Northern HSCT	379	0	379	841	833	1,674
Ulster	253	0	253	397	705	1,102
South Eastern HSCT	253	0	253	397	705	1,102
Daisy Hill	0	0	0	1	4	5
Southern HSCT	0	0	0	1	4	5
Altnagelvin Area	252	0	252	467	310	777
Erne	0	0	0	136	341	477
Western HSCT	252	0	252	603	651	1,254
NI Total	1,224	21	1,245	3,145	3,873	7,018

Source: KH08

Table 4c: Maternity and Child Health Number of Live and Still Births in Hospital by Hospital/HSC Trust, 2009/10

Hospital/ HSC Trust	Live Births	Still Births	Total Births
Mater Infirmorum	1,154	6	1,160
Royal Maternity	5,478	27	5,505
Belfast HSCT	6,632	33	6,665
Antrim	2,743	13	2,756
Causeway	1,432	10	1,442
Northern HSCT	4,175	23	4,198
Lagan Valley	1,066	4	1,070
Ulster	3,504	19	3,523
South Eastern HSCT	4,570	23	4,593
Craigavon Area	3,943	13	3,956
Daisy Hill	2,106	10	2,116
Southern HSCT	6,049	23	6,072
Altnagelvin Area	2,786	8	2,794
Erne	1,294	3	1,297
Western HSCT	4,080	11	4,091
NI Total	25,506	113	25,619

Source: KP19 Part 1

Table 5: Elderly Care Inpatient and Day Case Activity Data by Hospital/HSC Trust, 2009/10

Hospital/ HSC Trust	Average Available Beds	Average Occupied Beds	Day Cases	Inpatients	% Occupancy	Throughput	Average Length of Stay	Turnover Interval
Belfast City	67.5	64.8	0	1,317	96.0	19.5	18.0	0.7
Cancer Centre	0.1	0.1	0	2	100.0	33.2	11.0	0.0
Knockbracken	84.0	57.6	0	75	68.6	0.9	280.2	128.6
Mater Infirmorum	5.7	5.7	0	35	100.0	6.1	59.8	0.0
Musgrave Park	69.9	60.6	0	601	86.6	8.6	36.8	5.7
Royal Victoria	81.1	69.3	0	1,895	85.4	23.4	13.3	2.3
Belfast HSCT	308.3	258.0	0	3,925	83.7	12.7	24.0	4.7
Antrim	0.5	0.3	0	10	62.9	20.5	11.2	6.6
Braid Valley	32.2	26.4	0	320	82.0	10.0	30.1	6.6
Causeway Hospital	6.6	6.5	0	13	98.3	2.0	182.6	3.2
Holywell	64.3	58.2	0	91	90.6	1.4	233.5	24.3
Moyle	4.5	2.1	0	25	47.6	5.6	31.1	34.2
Whiteabbey	28.8	22.5	0	318	78.1	11.0	25.9	7.2
Northern HSCT	136.8	116.1	0	777	84.8	5.7	54.5	9.8
Ards	2.2	1.8	0	52	81.9	23.2	12.9	2.8
Downe	6.0	3.5	0	92	58.3	15.3	13.9	9.9
Downshire	41.9	35.3	0	118	84.4	2.8	109.3	20.2
Lagan Valley	27.7	22.8	0	484	82.2	17.5	17.2	3.7
Lagan Valley PNU	15.8	15.5	0	117	98.5	7.4	48.4	0.7
Ulster	78.0	75.9	632	1,842	97.3	23.6	15.0	0.4
South Eastern HSCT	171.6	154.9	632	2,705	90.3	15.8	20.9	2.3
Bluestone	19.3	15.5	0	120	80.5	6.2	47.1	11.4
Craigavon Area	31.3	30.5	3	1,358	97.4	43.4	8.2	0.2
Daisy Hill	33.1	24.8	1	424	74.8	12.8	21.3	7.2
Lurgan	38.8	34.8	0	541	89.6	13.9	23.5	2.7
Mullinure	24.4	18.6	0	283	76.2	11.6	24.0	7.5
South Tyrone	33.9	29.0	0	332	85.6	9.8	31.9	5.4
Southern HSCT	180.8	153.1	4	3,058	84.7	16.9	18.3	3.3

Table 5: Continued

Hospital/ HSC Trust	Average Available Beds	Average Occupied Beds	Day Cases	Discharges and Deaths	% Occupancy	Throughput	Average Length of Stay	Turnover Interval
Altnagelvin Area	46.9	44.7	0	897	95.4	19.1	18.2	0.9
Erne	42.3	31.7	0	772	75.0	18.3	15.0	5.0
Gransha	55.0	46.8	0	138	85.2	2.5	123.9	21.6
NWIH ²⁰	3.7	2.3	0	21	61.4	5.6	39.9	25.1
Tyrone County	20.9	13.6	0	92	65.0	4.4	53.8	29.0
Waterside	78.0	61.2	0	269	78.5	3.4	83.0	22.8
Western HSCT	246.8	200.4	0	2,189	81.2	8.9	33.4	7.7
NI Total	1,025.0	866.9	636	12,534	84.6	12.2	25.2	4.6

Source: KH03a

²⁰ Refer to Appendix 5: Explanatory Notes – Point 9.

Table 6: Mental Health Inpatient and Day Case Activity Data by Hospital/HSC Trust, 2009/10

Hospital/ HSC Trust	Average Available Beds	Average Occupied Beds	Day Cases	Inpatients	% Occupancy	Throughput	Average Length of Stay	Turnover Interval
Beechcroft CAMHS ¹⁶	12.0	13.6	30	29	100.0	2.4	171.2	0.0
Forster Green	15.0	11.9	0	35	79.3	2.3	124.1	32.3
Knockbracken	212.0	182.5	0	298	86.1	1.4	223.6	36.1
Mater Infirmorum	48.6	42.2	117	335	86.9	6.9	46.0	6.9
Shaftesbury Square	0.0	0.0	2,645	0	0.0	0.0	0.0	0.0
Windsor House	35.0	30.7	0	268	87.8	7.7	41.9	5.8
Belfast HSCT	322.6	281.0	2,792	965	87.1	3.0	106.3	15.7
Causeway	26.3	29.0	0	229	100.0	8.7	46.3	0.0
Holywell	156.2	145.4	0	764	93.1	4.9	69.5	5.1
Whiteabbey PNU ¹⁸	12.3	9.5	0	75	77.0	6.1	46.1	13.8
Northern HSCT	194.8	183.9	0	1,068	94.4	5.5	62.9	3.7
Ards	4.2	4.1	0	52	97.6	12.5	28.6	0.7
Downshire	94.0	88.8	0	486	94.4	5.2	66.7	3.9
Lagan Valley PNU	24.2	23.6	0	405	97.2	16.7	21.2	0.6
Ulster MHU ¹⁹	21.0	20.8	0	236	98.8	11.2	32.1	0.4
South Eastern HSCT	143.5	137.2	0	1,179	95.6	8.2	42.5	1.9
Bluestone	49.9	51.0	0	882	100.0	17.7	21.1	0.0
St Luke's	130.1	101.2	0	703	77.8	5.4	52.5	15.0
Southern HSCT	180.0	152.2	0	1,585	84.5	8.8	35.0	6.4
Altnagelvin Area	0.0	0.0	158	0	0.0	0.0	0.0	0.0
Gransha	54.0	59.1	0	543	100.0	10.1	39.8	0.0
Tyrone & Fermanagh	100.7	83.4	0	678	82.9	6.7	44.9	9.3
Western HSCT	154.7	142.6	158	1,221	92.2	7.9	42.6	3.6
NI Total	995.5	896.9	2,950	6,018	90.1	6.0	54.4	6.0

Source: KH03a

¹⁶ Refer to Appendix 5: Explanatory Notes – Point 20.

¹⁸ Refer to Appendix 5: Explanatory Notes – Point 10.

¹⁹ Refer to Appendix 5: Explanatory Notes – Point 19.

Table 7: Learning Disability Inpatient and Day Case Activity Data by Hospital/HSC Trust, 2009/10

Hospital/ HSC Trust	Average Available Beds	Average Occupied Beds	Day Cases	Inpatients	% Occupancy	Throughput	Average Length of Stay	Turnover Interval
Muckamore Abbey	255.8	242.8	0	136	94.9	0.5	651.6	34.9
Musgrave Park	7.9	6.6	4	1,171	83.9	148.8	2.1	0.4
Belfast HSCT	263.7	249.4	4	1,307	94.6	5.0	69.6	4.0
Longstone	82.2	72.2	0	237	87.8	2.9	111.2	15.4
Southern HSCT	82.2	72.2	0	237	87.8	2.9	111.2	15.4
Lakeview	53.0	47.5	5	226	89.7	4.3	76.7	8.8
Western HSCT	53.0	47.5	5	226	89.7	4.3	76.7	8.8
NI Total	398.9	369.1	9	1,770	92.5	4.4	76.1	6.1

Source: KH03a

Table 8: Specialty 100 - Inpatient and Day Case Activity Data by Hospital/HSC Trust for General Surgery, 2009/2010

Hospital/ HSC Trust	Average Available Beds	Average Occupied Beds	Regular Day and Night Day Cases Attendees	Elective Inpatients	Non Elective Inpatients	% Occupancy	% Throughput	Average Length of Stay	Turnover Interval	% Day Cases	
Belfast City	85.4	68.8	752	1	1,858	2,320	80.6	48.9	6.0	1.4	28.8
Cancer Centre	0.0	0.0	0	0	0	2	0.0	0.0	0.0	0.0	0.0
Mater Infirmorum	46.7	38.4	939	0	1,208	1,789	82.3	64.2	4.7	1.0	43.7
Royal Victoria	89.4	81.4	2,100	0	1,914	2,584	91.1	50.3	6.6	0.6	52.3
Belfast HSCT	221.5	188.7	3,791	1	4,980	6,695	85.2	52.7	5.9	1.0	43.2
Antrim	61.9	54.7	1,844	0	923	2,485	88.3	55.1	5.9	0.8	66.6
Causeway	49.4	33.9	2,272	0	934	1,950	68.6	58.3	4.3	2.0	70.9
Mid Ulster	12.0	8.0	1,683	0	141	390	66.2	44.2	5.5	2.8	92.3
Whiteabbey	10.1	5.8	1,446	0	190	246	57.1	43.2	4.8	3.6	88.4
Northern HSCT	133.4	102.3	7,245	0	2,188	5,071	76.7	54.4	5.1	1.6	76.8
Ards	0.0	0.0	2,713	0	4	0	0.0	0.0	0.0	0.0	99.9
Downe	0.0	0.0	1,372	0	0	0	0.0	0.0	0.0	0.0	100.0
Lagan Valley	6.9	1.0	2,264	0	327	2	14.7	47.9	1.1	6.5	87.4
Ulster	69.8	59.2	649	1	1,235	2,603	84.7	55.0	5.6	1.0	34.4
South Eastern HSCT	76.7	60.2	6,998	1	1,566	2,605	78.4	54.4	5.3	1.4	81.7
Craigavon Area	85.9	65.2	2,262	0	1,545	3,727	75.8	61.3	4.5	1.4	59.4
Daisy Hill	48.8	37.0	2,297	1	670	3,036	75.8	75.9	3.6	1.2	77.4
South Tyrone	0.0	0.0	2,000	0	3	0	0.0	0.0	0.0	0.0	99.9
Southern HSCT	134.8	102.2	6,559	1	2,218	6,763	75.8	66.6	4.2	1.3	74.7
Altnagelvin Area	69.5	61.8	2,224	2	1,277	3,206	88.9	64.5	5.0	0.6	63.5
Erne	39.9	28.4	1,646	0	587	2,644	71.1	81.0	3.2	1.3	73.7
Tyrone County	0.0	0.0	2,921	0	0	0	0.0	0.0	0.0	0.0	100.0
Western HSCT	109.4	90.2	6,791	2	1,864	5,850	82.4	70.5	4.3	0.9	78.5
NI Total	675.8	543.5	31,384	5	12,816	26,984	80.4	58.9	5.0	1.2	71.0

Source: Hospital Inpatient System & KH03a

Table 9: Specialty 101 - Inpatient and Day Case Activity Data by Hospital/HSC Trust for Urology, 2009/2010

Hospital/ HSC Trust	Average Available Beds	Average Occupied Beds	Regular Day and Night Attendees	Day Cases	Elective Inpatients	Non Elective Inpatients	% Occupancy	% Throughput	Average Length of Stay	Turnover Interval	% Day Cases	
Belfast City	35.4	30.8		4,561	0	1,963	639	87.1	73.5	4.3	0.6	69.9
Mater Infirmorum	5.8	3.8		675	0	536	27	65.7	96.4	2.5	1.3	55.7
Royal Victoria	0.0	0.0		194	0	0	0	0.0	0.0	0.0	0.0	100.0
Belfast HSCT	41.2	34.7		5,430	0	2,499	666	84.1	76.7	4.0	0.8	68.5
Causeway	8.0	8.0		1,609	0	760	292	100.0	131.4	2.8	0.0	67.9
Northern HSCT	8.0	8.0		1,609	0	760	292	100.0	131.4	2.8	0.0	67.9
Ards	0.0	0.0		1,862	6	3	1	0.0	0.0	0.0	0.0	99.8
Downe	0.0	0.0		237	0	0	0	0.0	0.0	0.0	0.0	100.0
Lagan Valley	0.0	0.0		529	0	5	0	0.0	0.0	0.0	0.0	99.1
Ulster	8.0	8.0		2	7	428	335	99.9	95.4	3.8	0.0	0.5
South Eastern HSCT	8.0	8.0		2,630	13	436	336	99.9	96.3	3.8	0.0	85.8
Craigavon Area	23.6	16.9		1,321	180	1,030	593	71.6	68.7	3.8	1.5	56.2
Daisy Hill	0.0	0.0		10	0	2	0	0.0	0.0	0.0	0.0	83.3
South Tyrone	0.0	0.0		181	0	0	0	0.0	0.0	0.0	0.0	100.0
Southern HSCT	23.6	16.9		1,512	180	1,032	593	71.7	68.7	3.8	1.5	59.4
Altnagelvin Area	8.1	7.6		1,689	0	661	220	93.2	108.7	3.1	0.2	71.9
Western HSCT	8.1	7.6		1,689	0	661	220	93.2	108.7	3.1	0.2	71.9
NI Total	89.0	75.2		12,870	193	5,388	2,107	84.5	84.2	3.7	0.7	70.5

Source: Hospital Inpatient System & KH03a

Table 10: Specialty 110 - Inpatient and Day Case Activity Data by Hospital/HSC Trust for T&O Surgery, 2009/2010

Hospital/ HSC Trust	Average Available Beds	Average Occupied Beds	Regular Day and Night Attenders	Day Cases	Elective Inpatients	Non Elective Inpatients	% Occupancy	% Throughput	Average Length of Stay	Turnover Interval	% Day Cases
Belfast City	0.0	0.0	0	0	0	1	0.0	0.0	0.0	0.0	0.0
Mater Infirmorum	0.0	0.0	0	0	1	0	0.0	0.0	0.0	0.0	0.0
Musgrave Park	110.3	80.6	3,047	0	5,677	326	73.1	54.4	4.9	1.8	34.9
Royal Victoria	100.5	94.8	176	0	369	2,946	94.3	33.0	10.4	0.6	32.3
Belfast HSCT	210.9	175.5	3,223	0	6,047	3,273	83.2	44.2	6.9	1.4	34.8
Downe	0.0	0.0	132	0	0	1	0.0	0.0	0.0	0.0	100.0
Ulster	48.8	42.0	86	0	398	1,231	86.0	33.4	9.4	1.5	17.8
South Eastern HSCT	48.8	42.0	218	0	398	1,232	86.0	33.4	9.4	1.5	35.4
Craigavon Area	30.0	22.3	424	0	745	518	74.4	42.1	6.4	2.2	36.3
Southern HSCT	30.0	22.3	424	0	745	518	74.4	42.1	6.4	2.2	36.3
Altnagelvin Area	48.4	42.3	227	0	1,430	1,798	87.3	66.6	4.8	0.7	13.7
Western HSCT	48.4	42.3	227	0	1,430	1,798	87.3	66.6	4.8	0.7	13.7
NI Total	338.1	282.1	4,092	0	8,620	6,821	83.4	45.7	6.7	1.3	32.2

Source: Hospital Inpatient System & KH03a

Table 11: Specialty 120 - Inpatient and Day Case Activity Data by Hospital/HSC Trust for ENT, 2009/2010

Hospital/ HSC Trust	Average Available Beds	Average Occupied Beds	Regular Day and Night Attendees	Day Cases	Elective Inpatients	Non Elective Inpatients	% Occupancy	% Throughput	Average Length of Stay	Turnover Interval	% Day Cases	
Belfast City	24.7	5.1		533	0	1,239	214	20.7	58.7	1.3	4.9	30.1
Cancer Centre	0.0	0.0		0	0	0	0	0.0	0.0	0.0	0.0	0.0
Mater Infirmorum ²²	0.0	0.0		9	0	1	0	0.0	0.0	0.0	0.0	90.0
Royal Victoria ²²	20.5	15.2		1,100	0	1,863	422	74.4	111.5	2.4	0.8	37.1
Belfast HSCT	45.3	20.4		1,642	0	3,103	636	45.1	82.6	2.0	2.4	34.6
Antrim	8.5	7.5		399	0	1,281	462	89.1	206.0	1.6	0.2	23.8
Causeway	0.0	0.0		219	0	3	0	0.0	0.0	0.0	0.0	98.6
Mid Ulster	0.1	0.1		195	0	67	1	100.0	539.6	0.7	0.0	74.4
Whiteabbey ²³	0.0	0.0		152	0	0	0	0.0	0.0	0.0	0.0	100.0
Northern HSCT	8.6	7.7		965	0	1,351	463	89.2	210.7	1.5	0.2	41.7
Downe	0.0	0.0		43	0	0	0	0.0	0.0	0.0	0.0	100.0
Lagan Valley	0.0	0.0		103	0	0	0	0.0	0.0	0.0	0.0	100.0
Ulster	4.5	1.2		488	0	417	46	26.9	103.5	0.9	2.6	53.9
South Eastern HSCT	4.5	1.2		634	0	417	46	26.9	103.5	0.9	2.6	60.3
Craigavon Area	14.6	8.2		881	0	1,518	619	55.9	145.9	1.4	1.1	36.7
Daisy Hill	3.8	0.1		371	0	45	0	1.7	11.8	0.5	30.3	89.2
South Tyrone	0.0	0.0		199	0	0	0	0.0	0.0	0.0	0.0	100.0
Southern HSCT	18.4	8.3		1,451	0	1,563	619	44.8	118.3	1.4	1.7	48.1
Altnagelvin Area	11.7	9.6		357	0	1,448	452	82.3	162.1	1.9	0.4	19.8
Tyrone County	0.0	0.0		399	0	1	0	0.0	0.0	0.0	0.0	99.8
Western HSCT	11.7	9.6		756	0	1,449	452	82.3	162.2	1.9	0.4	34.3
NI Total	88.5	47.2		5,448	0	7,883	2,216	53.3	114.1	1.7	1.5	40.9

Source: Hospital Inpatient System & KH03a

²² Refer to Appendix 5: Explanatory Notes – Point 11.

²³ Refer to Appendix 5: Explanatory Notes – Point 12.

Table 12: Specialty 130 - Inpatient and Day Case Activity Data by Hospital/HSC Trust for Ophthalmology, 2009/2010

Hospital/ HSC Trust	Average Available Beds	Average Occupied Beds	Regular Day and Night Attendees	Day Cases	Elective Inpatients	Non Elective Inpatients	% Occupancy	% Throughput	Average Length of Stay	Turnover Interval	% Day Cases	
Mater Infirmorum ²⁷	0.0	0.0		3,400	0	25	0	0.0	0.0	0.0	0.0	99.3
Royal Victoria ²⁷	13.4	9.1		6,900	0	1,145	390	67.8	114.9	2.2	1.0	85.8
Belfast HSCT	13.4	9.1		10,300	0	1,170	390	67.9	116.3	2.1	1.0	89.8
Downe	0.0	0.0		112	0	0	0	0.0	0.0	0.0	0.0	100.0
Lagan Valley	0.0	0.0		675	0	5	0	0.0	0.0	0.0	0.0	99.3
South Eastern HSCT	0.0	0.0		787	0	5	0	0.0	0.0	0.0	0.0	99.4
South Tyrone	0.0	0.0		695	0	0	0	0.0	0.0	0.0	0.0	100.0
Southern HSCT	0.0	0.0		695	0	0	0	0.0	0.0	0.0	0.0	100.0
Altnagelvin Area	2.0	1.1		2,882	0	93	67	55.6	81.0	2.5	2.0	96.9
Tyrone County	0.0	0.0		318	0	0	0	0.0	0.0	0.0	0.0	100.0
Western HSCT	2.0	1.1		3,200	0	93	67	55.6	81.0	2.5	2.0	97.2
NI Total	15.4	10.2		14,982	0	1,268	457	66.4	112.0	2.2	1.1	92.2

Source: Hospital Inpatient System & KH03a

²⁷ Refer to Appendix 5: Explanatory Notes – Point 13.

Table 13: Specialty 140 - Inpatient and Day Case Activity Data by Hospital/HSC Trust for Oral Surgery, 2009/2010

Hospital/ HSC Trust	Average Available Beds	Average Occupied Beds	Regular Day and Night Attendees	Day Cases	Elective Inpatients	Non Elective Inpatients	% Occupancy	% Throughput	Average Length of Stay	Turnover Interval	% Day Cases
Mater Infirmorum	0.0	0.0	0	349	0	0	0.0	0.0	0.0	0.0	100.0
Royal Victoria	3.6	1.2	0	38	190	43	32.2	64.3	1.8	3.8	16.7
Belfast HSCT	3.6	1.2	0	387	190	43	32.2	64.3	1.8	3.8	67.1
Antrim	0.0	0.0	0	54	0	0	0.0	0.0	0.0	0.0	100.0
Mid Ulster	0.0	0.0	0	1	0	0	0.0	0.0	0.0	0.0	100.0
Northern HSCT	0.0	0.0	0	55	0	0	0.0	0.0	0.0	0.0	100.0
Ulster	5.8	5.8	0	169	338	479	100.0	140.1	2.6	0.0	33.3
South Eastern HSCT	5.8	5.8	0	169	338	479	100.0	140.1	2.6	0.0	33.3
Craigavon Area	0.0	0.0	0	59	0	0	0.0	0.0	0.0	0.0	100.0
Daisy Hill	0.0	0.0	0	50	1	0	0.0	0.0	0.0	0.0	98.0
Southern HSCT	0.0	0.0	0	109	1	0	0.0	0.0	0.0	0.0	99.1
Altnagelvin Area	3.8	2.2	0	1,792	697	220	57.7	238.2	0.9	0.6	72.0
Erne	0.0	0.0	0	242	2	0	0.0	0.0	0.0	0.0	99.2
Tyrone County	0.0	0.0	0	225	0	0	0.0	0.0	0.0	0.0	100.0
Western HSCT	3.9	2.2	0	2,259	699	220	57.8	238.4	0.9	0.6	76.4
NI Total	13.3	9.2	0	2,979	1,228	742	69.3	147.9	1.7	0.8	70.8

Source: Hospital Inpatient System & KH03a

Table 14: Specialty 142 - Inpatient and Day Case Activity Data by Hospital/HSC Trust for Paediatric Dentistry, 2009/2010

Hospital/ HSC Trust	Average Available Beds	Average Occupied Beds	Regular Day and Night Attendees	Day Cases	Elective Inpatients	Non Elective Inpatients	% Occupancy	% Throughput	Average Length of Stay	Turnover Interval	% Day Cases
Craigavon Area	0.0	0.0	8	0	0	0	0.0	0.0	0.0	0.0	100.0
Southern HSCT	0.0	0.0	8	0	0	0	0.0	0.0	0.0	0.0	100.0
NI Total	0.0	0.0	8	0	0	0	0.0	0.0	0.0	0.0	100.0

Source: Hospital Inpatient System & KH03a

Table 15: Specialty 150 - Inpatient and Day Case Activity Data by Hospital/HSC Trust for Neurosurgery, 2009/2010

Hospital/ HSC Trust	Average Available Beds	Average Occupied Beds	Regular Day and Night Attendees	Day Cases	Elective Inpatients	Non Elective Inpatients	% Occupancy	% Throughput	Average Length of Stay	Turnover Interval	% Day Cases	
Royal Victoria	43.0	39.7		130	0	489	773	92.3	29.4	11.5	1.0	21.0
Belfast HSCT	43.0	39.7		130	0	489	773	92.3	29.4	11.5	1.0	21.0
Lagan Valley	0.0	0.0		155	0	0	0	0.0	0.0	0.0	0.0	100.0
South Eastern HSCT	0.0	0.0		155	0	0	0	0.0	0.0	0.0	0.0	100.0
NI Total	43.0	39.7		285	0	489	773	92.3	29.4	11.5	1.0	36.8

Source: Hospital Inpatient System & KH03a

Table 16: Specialty 160 - Inpatient and Day Case Activity Data by Hospital/HSC Trust for Plastic Surgery, 2009/2010

Hospital/ HSC Trust	Average Available Beds	Average Occupied Beds	Regular Day and Night Attendees	Day Cases	Elective Inpatients	Non Elective Inpatients	% Occupancy	% Throughput	Average Length of Stay	Turnover Interval	% Day Cases
Belfast City	0.3	0.3	0	3	65	0	100.0	196.1	1.9	0.0	4.4
Royal Victoria	7.2	6.3	0	246	134	100	88.5	32.7	9.9	1.3	64.7
Belfast HSCT	7.5	6.7	0	249	199	100	89.0	39.9	8.1	1.0	55.6
Ards	0.0	0.0	0	72	0	1	0.0	0.0	0.0	0.0	100.0
Lagan Valley	0.0	0.0	0	51	0	0	0.0	0.0	0.0	0.0	100.0
Ulster	23.2	17.0	0	1,453	693	1,382	73.5	89.4	3.0	1.1	67.7
South Eastern HSCT	23.2	17.0	0	1,576	693	1,383	73.5	89.5	3.0	1.1	69.5
NI Total	30.7	23.7	0	1,825	892	1,483	77.3	77.4	3.6	1.1	67.2

Source: Hospital Inpatient System & KH03a

Table 17: Specialty 170 - Inpatient and Day Case Activity Data by Hospital/HSC Trust for Cardiac Surgery, 2009/2010

Hospital/ HSC Trust	Average Available Beds	Average Occupied Beds	Regular Day and Night Attendees	Day Cases	Elective Inpatients	Non Elective Inpatients	% Occupancy	Throughput	Average Length of Stay	Turnover Interval	% Day Cases
Royal Victoria	41.8	30.3	0	0	826	108	72.5	22.4	11.8	4.5	0.0
Belfast HSCT	41.8	30.3	0	0	826	108	72.5	22.4	11.8	4.5	0.0
NI Total	41.8	30.3	0	0	826	108	72.5	22.4	11.8	4.5	0.0

Source: Hospital Inpatient System & KH03a

Table 18: Specialty 171 - Inpatient and Day Case Activity Data by Hospital/HSC Trust for Paediatric Surgery, 2009/2010

Hospital/ HSC Trust	Average Available Beds	Average Occupied Beds	Day Cases	Regular Day and Night Attenders	Elective Inpatients	Non Elective Inpatients	% Occupancy	% Throughput	Average Length of Stay	Turnover Interval	% Day Cases
Ulster	0.0	0.0	605	0	6	15	0.0	0.0	0.0	0.0	99.0
South Eastern HSCT	0.0	0.0	605	0	6	15	0.0	0.0	0.0	0.0	99.0
NI Total	0.0	0.0	605	0	6	15	0.0	0.0	0.0	0.0	99.0

Source: Hospital Inpatient System & KH03a

Table 19: Specialty 172 - Inpatient and Day Case Activity Data by Hospital/HSC Trust for Thoracic Surgery, 2009/2010

Hospital/ HSC Trust	Average Available Beds	Average Occupied Beds	Regular Day and Night Attendees	Day Cases	Elective Inpatients	Non Elective Inpatients	% Occupancy	% Throughput	Average Length of Stay	Turnover Interval	% Day Cases
Belfast City	2.7	0.8	0	0	52	3	30.7	20.5	5.5	12.3	0.0
Cancer Centre	0.0	0.0	0	0	2	0	0.0	0.0	0.0	0.0	0.0
Royal Victoria	19.1	15.9	419	0	604	188	83.4	41.5	7.3	1.5	41.0
Belfast HSCT	21.8	16.7	419	0	658	191	76.9	39.0	7.2	2.2	38.9
NI Total	21.8	16.7	419	0	658	191	76.9	39.0	7.2	2.2	38.9

Source: Hospital Inpatient System & KH03a

Table 20: Specialty 180 - Inpatient and Day Case Activity Data by Hospital/HSC Trust for Accident & Emergency, 2009/2010

Hospital/ HSC Trust	Average Available Beds	Average Occupied Beds	Regular Day and Night Day Cases Attenders	Elective Inpatients	Non Elective Inpatients	% Occupancy	% Throughput	Average Length of Stay	Turnover Interval	% Day Cases	
Belfast City	0.8	0.0	18	0	0	0.0	0.0	0.0	0.0	100.0	
Mater Infirmorum	0.0	0.0	1	0	1	0.0	0.0	0.0	0.0	50.0	
Royal Victoria	1.8	1.7	0	0	0	937	97.3	535.2	0.7	0.0	
Belfast HSCT	2.5	1.7	19	0	1	937	67.6	372.1	0.7	0.3	95.0
Antrim	22.6	4.7	0	0	1	1,288	20.7	57.0	1.3	5.1	0.0
Northern HSCT	22.6	4.7	0	0	1	1,288	20.7	57.0	1.3	5.1	0.0
Ards	0.6	0.3	0	0	0	8	61.1	14.0	15.9	10.1	0.0
Downe	4.7	1.4	0	0	1	711	30.7	151.7	0.7	1.7	0.0
Lagan Valley	1.2	0.5	0	0	0	256	37.7	204.9	0.7	1.1	0.0
Ulster	10.0	5.8	0	0	0	2,589	58.1	257.7	0.8	0.6	0.0
South Eastern HSCT	16.6	8.1	0	0	1	3,564	48.9	215.3	0.8	0.9	0.0
Craigavon Area	5.8	3.8	0	0	0	2,119	66.2	367.4	0.7	0.3	0.0
Southern HSCT	5.8	3.8	0	0	0	2,119	66.2	367.4	0.7	0.3	0.0
NI Total	47.5	18.3	19	0	3	7,908	38.6	166.7	0.8	1.3	86.4

Source: Hospital Inpatient System & KH03a

Table 21: Specialty 190 - Inpatient and Day Case Activity Data by Hospital/HSC Trust for Anaesthetics, 2009/2010

Hospital/ HSC Trust	Average Available Beds	Average Occupied Beds	Regular Day and Night Attenders	Day Cases	Elective Inpatients	Non Elective Inpatients	% Occupancy	% Throughput	Average Length of Stay	Turnover Interval	% Day Cases
RBHSC	8.1	5.4	0	0	5	60	66.8	8.1	30.2	15.0	0.0
Royal Victoria	25.2	21.7	0	0	21	170	86.0	7.6	41.4	6.8	0.0
Belfast HSCT	33.3	27.0	0	0	26	230	81.3	7.7	38.6	8.9	0.0
Antrim	8.1	6.8	0	0	2	91	83.7	11.5	26.6	5.2	0.0
Northern HSCT	8.1	6.8	0	0	2	91	83.7	11.5	26.6	5.2	0.0
Ulster	10.8	7.9	0	0	4	117	73.5	11.2	23.9	8.6	0.0
South Eastern HSCT	10.8	7.9	0	0	4	117	73.5	11.2	23.9	8.6	0.0
Craigavon Area	6.8	6.5	0	0	7	100	94.5	15.7	22.0	1.3	0.0
South Tyrone	0.0	0.0	2	0	0	0	0.0	0.0	0.0	0.0	100.0
Southern HSCT	6.8	6.5	2	0	7	100	94.5	15.7	22.0	1.3	22.2
Altnagelvin Area	10.4	7.3	0	0	3	159	70.2	15.6	16.4	7.0	0.0
Western HSCT	10.4	7.3	0	0	3	159	70.2	15.6	16.4	7.0	0.0
NI Total	69.4	55.5	2	0	42	697	80.0	10.7	27.4	6.8	4.5

Source: Hospital Inpatient System & KH03a

Table 22: Specialty 191 - Inpatient and Day Case Activity Data by Hospital/HSC Trust for Pain Management, 2009/2010

Hospital/ HSC Trust	Average Available Beds	Average Occupied Beds	Regular Day and Night Attendees	Regular Day Day Cases	Elective Inpatients	Non Elective Inpatients	% Occupancy	% Throughput	Average Length of Stay	Turnover Interval	% Day Cases
Belfast City	3.9	0.0	0	726	12	0	0.0	3.1	0.0	118.7	98.4
Mater Infirmorum	0.0	0.0	0	473	0	0	0.0	0.0	0.0	0.0	100.0
Belfast HSCT	3.9	0.0	0	1,199	12	0	0.0	3.1	0.0	118.7	99.0
Antrim	0.0	0.0	0	283	1	0	0.0	0.0	0.0	0.0	99.6
Causeway	0.0	0.0	0	549	5	2	0.0	0.0	0.0	0.0	99.1
Mid Ulster	0.0	0.0	0	0	4	1	0.0	0.0	0.0	0.0	0.0
Whiteabbey	0.0	0.0	0	88	0	0	0.0	0.0	0.0	0.0	100.0
Northern HSCT	0.0	0.0	0	920	10	3	0.0	0.0	0.0	0.0	98.9
Ulster	0.0	0.0	0	554	1	2	0.0	0.0	0.0	0.0	99.8
South Eastern HSCT	0.0	0.0	0	554	1	2	0.0	0.0	0.0	0.0	99.8
Craigavon Area	0.0	0.0	0	1	0	0	0.0	0.0	0.0	0.0	100.0
Daisy Hill	0.0	0.0	0	15	0	0	0.0	0.0	0.0	0.0	100.0
South Tyrone	0.0	0.0	0	265	0	0	0.0	0.0	0.0	0.0	100.0
Southern HSCT	0.0	0.0	0	281	0	0	0.0	0.0	0.0	0.0	100.0
Altnagelvin Area	0.0	0.0	0	194	0	0	0.0	0.0	0.0	0.0	100.0
Erne	0.0	0.0	0	1	0	0	0.0	0.0	0.0	0.0	100.0
Tyrone County	0.0	0.0	0	264	0	0	0.0	0.0	0.0	0.0	100.0
Western HSCT	0.0	0.0	0	459	0	0	0.0	0.0	0.0	0.0	100.0
NI Total	3.9	0.0	0	3,413	23	5	0.6	7.1	0.3	50.9	99.3

Source: Hospital Inpatient System & KH03a

Table 23: Specialty 300 - Inpatient and Day Case Activity Data by Hospital/HSC Trust for General Medicine, 2009/2010

Hospital/ HSC Trust	Average Available Beds	Average Occupied Beds	Regular Day and Night Day Cases Attenders	Elective Inpatients	Non Elective Inpatients	% Occupancy	% Throughput	Average Length of Stay	Turnover Interval	% Day Cases	
Belfast City	134.3	123.9	0	6	66	5,767	92.2	43.4	7.8	0.7	0.0
Cancer Centre	0.3	0.3	0	0	0	8	100.0	25.2	14.5	0.0	0.0
Mater Infirmorum	124.2	116.4	1,244	0	180	4,670	93.7	39.1	8.8	0.6	87.4
Royal Victoria	113.3	101.1	2,994	0	405	5,426	89.2	51.5	6.3	0.8	88.1
Belfast HSCT	372.1	341.6	4,238	6	651	15,871	91.8	44.4	7.5	0.7	86.7
Antrim	145.5	138.1	264	5	142	6,383	94.9	44.8	7.7	0.4	65.0
Braid Valley	0.4	0.4	0	0	0	5	100.0	11.3	32.4	0.0	0.0
Causeway	94.0	84.4	1,251	0	185	2,902	89.8	32.8	10.0	1.1	87.1
Mid Ulster	82.6	75.7	622	0	45	2,337	91.6	28.8	11.6	1.1	93.3
Moyle	0.1	0.1	0	0	0	2	100.0	22.1	16.5	0.0	0.0
Whiteabbey	52.3	41.2	8	1	19	1,203	78.8	23.4	12.3	3.3	29.6
Northern HSCT	374.9	339.8	2,145	6	391	12,832	90.6	35.3	9.4	1.0	84.6
Ards	0.0	0.0	397	0	0	6	0.0	0.0	0.0	0.0	100.0
Downe	53.3	43.5	434	0	23	2,923	81.5	55.3	5.4	1.2	95.0
Lagan Valley	64.5	55.5	1,081	0	87	3,339	86.1	53.2	5.9	1.0	92.6
Ulster	141.4	132.6	2,014	2	372	6,426	93.8	48.1	7.1	0.5	84.4
South Eastern HSCT	259.1	231.6	3,926	2	482	12,694	89.4	50.8	6.4	0.8	89.1
Banbridge	0.0	0.0	10	0	0	0	0.0	0.0	0.0	0.0	100.0
Craigavon Area	114.1	88.3	137	0	85	5,988	77.4	53.2	5.3	1.6	61.7
Daisy Hill	68.4	56.5	591	1	127	3,364	82.6	51.0	5.9	1.2	82.3
South Tyrone	0.0	0.0	4	0	0	0	0.0	0.0	0.0	0.0	100.0
Southern HSCT	182.5	144.8	742	1	212	9,352	79.3	52.4	5.5	1.4	77.8

Table 23: Specialty 300 - Continued

Hospital/ HSC Trust	Average Available Beds	Average Occupied Beds	Day Cases	Regular Day and Night Admissions	Elective Inpatients	Non Elective Inpatients	% Occupancy	% Throughput	Average Length of Stay	Turnover Interval	% Day Cases
Altnagelvin Area	133.1	118.6	4,768	12	370	5,538	89.1	44.4	7.3	0.9	92.8
Erne ²⁴	57.9	48.4	1,254	0	34	3,674	83.6	64.0	4.8	0.9	97.4
Tyrone County ²⁴	0.7	0.7	93	0	5	40	100.0	67.6	5.4	0.0	94.9
Western HSCT	191.6	167.7	6,115	12	409	9,252	87.5	50.4	6.3	0.9	93.7
NI Total	1380.3	1225.5	17,166	27	2,145	60,001	88.8	45.0	7.2	0.9	88.9

Source: Hospital Inpatient System & KH03a

²⁴ Refer to Appendix 5: Explanatory Notes – Point 14.

Table 24: Specialty 301 - Inpatient and Day Case Activity Data by Hospital/HSC Trust for Gastroenterology, 2009/2010

Hospital/ HSC Trust	Average Available Beds	Average Occupied Beds	Regular Day and Night Attendees	Day Cases	Elective Inpatients	Non Elective Inpatients	% Occupancy	% Throughput	Average Length of Stay	Turnover Interval	% Day Cases
Belfast City	1.7	1.7	0	2,239	134	21	100.0	89.4	4.1	0.0	94.4
Cancer Centre	0.0	0.0	0	0	0	1	0.0	0.0	0.0	0.0	0.0
Royal Victoria	3.4	3.4	0	1,472	73	74	100.0	43.8	8.3	0.0	95.3
Belfast HSCT	5.1	5.1	0	3,711	207	96	100.0	59.5	6.1	0.0	94.7
Antrim	5.3	5.3	0	1,687	116	107	100.0	42.0	8.7	0.0	93.6
Mid Ulster	0.0	0.0	0	451	1	0	0.0	0.0	0.0	0.0	99.8
Whiteabbey	1.7	1.7	0	1,837	36	35	100.0	41.6	8.8	0.0	98.1
Northern HSCT	7.0	7.0	0	3,975	153	142	100.0	42.0	8.7	0.0	96.3
Downe	0.0	0.0	0	122	0	0	0.0	0.0	0.0	0.0	100.0
South Eastern HSCT	0.0	0.0	0	122	0	0	0.0	0.0	0.0	0.0	100.0
Craigavon Area	0.4	0.4	0	772	56	6	100.0	138.8	2.6	0.0	93.2
South Tyrone	0.0	0.0	0	994	0	0	0.0	0.0	0.0	0.0	100.0
Southern HSCT	0.4	0.4	0	1,766	56	6	100.0	138.8	2.6	0.0	96.9
NI Total	12.6	12.6	0	9,574	416	244	100.0	52.5	7.0	0.0	95.8

Source: Hospital Inpatient System & KH03a

Table 25: Specialty 302 - Inpatient and Day Case Activity Data by Hospital/HSC Trust for Endocrinology, 2009/2010

Hospital/ HSC Trust	Average Available Beds	Average Occupied Beds	Regular Day and Night Attenders	Day Cases	Elective Inpatients	Non Elective Inpatients	% Occupancy	% Throughput	Average Length of Stay	Turnover Interval	% Day Cases	
Royal Victoria	11.0	9.5		157	0	267	323	87.0	53.8	5.9	0.9	37.0
Belfast HSCT	11.0	9.5		157	0	267	323	87.0	53.8	5.9	0.9	37.0
Causeway	0.4	0.4		0	0	1	31	100.0	86.5	4.2	0.0	0.0
Northern HSCT	0.4	0.4		0	0	1	31	100.0	86.5	4.2	0.0	0.0
Daisy Hill	0.0	0.0		0	0	0	7	0.0	0.0	0.0	0.0	0.0
Southern HSCT	0.0	0.0		0	0	0	7	0.0	0.0	0.0	0.0	0.0
NI Total	11.4	9.9		157	0	268	361	87.5	55.4	5.8	0.8	36.9

Source: Hospital Inpatient System & KH03a

Table 26: Specialty 303 - Inpatient and Day Case Activity Data by Hospital/HSC Trust for Haematology (Clinical), 2009/2010

Hospital/ HSC Trust	Average Available Beds	Average Occupied Beds	Regular Day and Night Attenders	Day Cases	Elective Inpatients	Non Elective Inpatients	% Occupancy	% Throughput	Average Length of Stay	Turnover Interval	% Day Cases	
Belfast City	32.6	31.7		129	0	244	383	97.2	19.2	18.4	0.5	34.6
Cancer Centre	6.3	6.3		4,795	0	28	204	100.0	37.0	9.9	0.0	99.4
Royal Maternity	0.0	0.0		1	0	0	0	0.0	0.0	0.0	0.0	100.0
Belfast HSCT	38.9	38.0		4,925	0	272	587	97.7	22.1	16.1	0.4	94.8
Antrim	2.0	2.0		821	3	52	51	100.0	52.7	6.9	0.0	94.0
Mid Ulster	0.0	0.0		32	0	2	0	0.0	0.0	0.0	0.0	94.1
Northern HSCT	2.0	2.0		853	3	54	51	100.0	53.7	6.8	0.0	94.0
Ulster	7.4	7.3		163	1,765	145	182	97.9	43.9	8.1	0.0	52.9
South Eastern HSCT	7.4	7.3		163	1,765	145	182	97.9	43.9	8.1	0.0	52.9
Craigavon Area	8.7	6.1		906	990	126	147	70.2	31.4	8.2	3.5	87.8
Southern HSCT	8.7	6.1		906	990	126	147	70.2	31.4	8.2	3.5	87.8
Altnagelvin Area	6.5	6.4		1,096	526	25	225	99.2	38.6	9.4	0.0	97.8
Western HSCT	6.5	6.4		1,096	526	25	225	99.2	38.6	9.4	0.0	97.8
NI Total	63.4	59.7		7,943	3,284	622	1,192	94.2	28.6	12.0	0.7	92.7

Source: Hospital Inpatient System & KH03a

Table 27: Specialty 314 - Inpatient and Day Case Activity Data by Hospital/HSC Trust for Rehabilitation, 2009/2010

Hospital/ HSC Trust	Average Available Beds	Average Occupied Beds	Regular Day and Night Attenders	Day Cases	Elective Inpatients	Non Elective Inpatients	% Occupancy	% Throughput	Average Length of Stay	Turnover Interval	% Day Cases	
Musgrave Park	48.0	38.8		2,219	0	223	68	80.8	6.1	48.7	11.5	90.9
Belfast HSCT	48.0	38.8		2,219	0	223	68	80.8	6.1	48.7	11.5	90.9
Lurgan	16.9	15.4		0	0	2	90	91.0	5.4	61.1	6.0	0.0
Southern HSCT	16.9	15.4		0	0	2	90	91.0	5.4	61.1	6.0	0.0
Erne	9.1	5.4		0	0	0	115	59.7	12.6	17.3	11.7	0.0
Tyrone County	20.8	17.9		2	0	66	378	86.0	21.3	14.7	2.4	2.9
Western HSCT	29.9	23.3		2	0	66	493	78.0	18.7	15.2	4.3	2.9
NI Total	94.8	77.5		2,221	0	291	651	81.8	9.9	30.0	6.7	88.4

Source: Hospital Inpatient System & KH03a

Table 28: Specialty 315 - Inpatient and Day Case Activity Data by Hospital/HSC Trust for Palliative Medicine, 2009/2010

Hospital/ HSC Trust	Average Available Beds	Average Occupied Beds	Regular Day and Night Attenders	Day Cases	Elective Inpatients	Non Elective Inpatients	% Occupancy	% Throughput	Average Length of Stay	Turnover Interval	% Day Cases
Cancer Centre	0.0	0.0	1	0	0	1	0.0	0.0	0.0	0.0	100.0
Belfast HSCT	0.0	0.0	1	0	0	1	0.0	0.0	0.0	0.0	100.0
Braid Valley	3.6	3.1	0	0	1	63	84.4	17.6	17.5	3.2	0.0
Moyle	1.2	0.4	0	0	0	6	30.9	4.9	22.8	51.2	0.0
Northern HSCT	4.9	3.4	0	0	1	69	71.0	14.4	18.0	7.3	0.0
Craigavon Area	0.0	0.0	2	0	0	0	0.0	0.0	0.0	0.0	100.0
Southern HSCT	0.0	0.0	2	0	0	0	0.0	0.0	0.0	0.0	100.0
Altnagelvin Area	0.0	0.0	11	0	1	0	0.0	0.0	0.0	0.0	91.7
Western HSCT	0.0	0.0	11	0	1	0	0.0	0.0	0.0	0.0	91.7
NI Total	4.9	3.5	14	0	2	70	71.0	14.8	17.5	7.1	87.5

Source: Hospital Inpatient System & KH03a

Table 29: Specialty 320 - Inpatient and Day Case Activity Data by Hospital/HSC Trust for Cardiology, 2009/2010

Hospital/ HSC Trust	Average Available Beds	Average Occupied Beds	Regular Day and Night Attenders	Day Cases	Elective Inpatients	Non Elective Inpatients	% Occupancy	% Throughput	Average Length of Stay	Turnover Interval	% Day Cases
Belfast City	34.9	24.0	6	969	1,214	1,845	68.9	87.7	2.9	1.3	44.4
Mater Infirmorum	25.0	20.9	0	103	26	1,393	83.7	56.8	5.4	1.0	79.8
Royal Victoria	54.7	42.6	0	2,162	1,358	1,330	77.9	49.2	5.8	1.6	61.4
Belfast HSCT	114.5	87.5	6	3,234	2,598	4,568	76.4	62.6	4.5	1.4	55.5
Antrim	35.5	31.5	1	145	36	2,106	88.7	60.4	5.4	0.7	80.1
Braid Valley	0.0	0.0	0	0	0	0	0.0	0.0	0.0	0.0	0.0
Causeway	12.2	12.2	0	33	38	991	99.9	84.2	4.3	0.0	46.5
Whiteabbey	9.3	9.2	0	39	13	689	98.8	75.1	4.8	0.0	75.0
Northern HSCT	57.0	52.9	1	217	87	3,786	92.8	67.9	5.0	0.4	71.4
Ulster	27.5	25.1	0	40	117	1,699	91.4	66.0	5.1	0.5	25.5
South Eastern HSCT	27.5	25.1	0	40	117	1,699	91.4	66.0	5.1	0.5	25.5
Craigavon Area	29.7	24.0	0	1,502	287	2,014	81.0	77.6	3.8	0.9	84.0
Daisy Hill	11.6	8.2	0	44	10	903	70.9	79.0	3.3	1.3	81.5
Southern HSCT	41.2	32.2	0	1,546	297	2,917	78.1	78.0	3.7	1.0	83.9
Altnagelvin Area	33.5	27.9	0	527	96	2,184	83.2	68.0	4.5	0.9	84.6
Erne	13.0	11.1	0	35	13	644	85.5	50.6	6.2	1.0	72.9
Tyrone County	4.0	0.8	0	58	41	1,553	21.2	399.6	0.2	0.7	58.6
Western HSCT	50.5	39.8	0	620	150	4,381	78.9	89.7	3.2	0.9	80.5
NI Total	290.8	237.6	7	5,657	3,249	17,351	81.7	70.8	4.2	0.9	63.5

Source: Hospital Inpatient System & KH03a

Table 30: Specialty 330 - Inpatient and Day Case Activity Data by Hospital/HSC Trust for Dermatology, 2009/2010

Hospital/ HSC Trust	Average Available Beds	Average Occupied Beds	Regular Day and Night Attenders	Day Cases	Elective Inpatients	Non Elective Inpatients	% Occupancy	% Throughput	Average Length of Stay	Turnover Interval	% Day Cases
Belfast City	8.4	7.8	0	0	171	31	93.3	24.1	14.1	1.0	0.0
Royal Victoria	0.0	0.0	449	0	1	0	0.0	0.0	0.0	0.0	99.8
Belfast HSC Trust	8.4	7.8	449	0	172	31	93.3	24.2	14.1	1.0	72.3
Antrim	0.0	0.0	0	0	1	1	0.0	0.0	0.0	0.0	0.0
Causeway	0.8	0.4	290	0	14	6	50.0	26.4	6.9	6.9	95.4
Whiteabbey	1.7	0.5	94	0	5	9	26.9	8.3	11.8	32.1	94.9
Northern HSC Trust	2.5	0.9	384	0	20	16	34.8	14.6	8.7	16.3	95.0
Ulster	0.0	0.0	3,281	0	0	0	0.0	0.0	0.0	0.0	100.0
South Eastern HSC Trust	0.0	0.0	3,281	0	0	0	0.0	0.0	0.0	0.0	100.0
Craigavon Area ²¹	2.8	2.8	343	0	121	17	99.2	48.7	7.4	0.0	73.9
Daisy Hill	0.0	0.0	162	0	0	1	0.0	0.0	0.0	0.0	100.0
Lurgan ²¹	0.6	0.3	0	0	23	0	59.5	40.0	5.4	3.7	0.0
Southern HSC Trust	3.4	3.2	505	0	144	18	92.5	47.5	7.1	0.6	77.8
Altnagelvin Area	4.9	3.6	8	0	135	31	74.8	34.2	8.0	2.7	5.6
Western HSC Trust	4.9	3.6	8	0	135	31	74.8	34.2	8.0	2.7	5.6
NI Total	19.1	15.5	4,627	0	471	96	80.9	29.7	10.0	2.3	90.8

Source: Hospital Inpatient System & KH03a

²¹ Refer to Appendix 5: Explanatory Notes – Point 16.

Table 31: Specialty 340 - Inpatient and Day Case Activity Data by Hospital/HSC Trust for Thoracic Medicine, 2009/2010

Hospital/ HSC Trust	Average Available Beds	Average Occupied Beds	Day Cases	Regular Day and Night Attenders	Elective Inpatients	Non Elective Inpatients	% Occupancy	% Throughput	Average Length of Stay	Turnover Interval	% Day Cases
Belfast City	18.6	15.5	674	0	369	230	82.9	32.1	9.4	1.9	64.6
Belfast HSCT	18.6	15.5	674	0	369	230	82.9	32.1	9.4	1.9	64.6
Craigavon Area	0.2	0.2	729	0	14	6	100.0	123.7	3.0	0.0	98.1
Southern HSCT	0.2	0.2	729	0	14	6	100.0	123.7	3.0	0.0	98.1
NI Total	18.8	15.6	1,403	0	383	236	83.0	32.9	9.2	1.9	78.6

Source: Hospital Inpatient System & KH03a

Table 32: Specialty 350 - Inpatient and Day Case Activity Data by Hospital/HSC Trust for Infectious Diseases, 2009/2010

Hospital/ HSC Trust	Average Available Beds	Average Occupied Beds	Day Cases	Regular Day and Night Attendees	Elective Inpatients	Non Elective Inpatients	% Occupancy	% Throughput	Average Length of Stay	Turnover Interval	% Day Cases
Royal Victoria	3.0	1.6	0	0	10	39	54.1	16.3	12.1	10.3	0.0
Belfast HSCT	3.0	1.6	0	0	10	39	54.1	16.3	12.1	10.3	0.0
Antrim	5.7	1.5	0	0	3	323	26.1	57.1	1.7	4.7	0.0
Northern HSCT	5.7	1.5	0	0	3	323	26.1	57.1	1.7	4.7	0.0
NI Total	8.7	3.1	0	0	13	362	35.7	43.0	3.0	5.5	0.0

Source: Hospital Inpatient System & KH03a

Table 33: Specialty 360 - Inpatient and Day Case Activity Data by Hospital/HSC Trust for Genito-Urinary Medicine, 2009/2010

Hospital/ HSC Trust	Average Available Beds	Average Occupied Beds	Day Cases	Regular Day and Night Attenders	Elective Inpatients	Non Elective Inpatients	% Occupancy	% Throughput	Average Length of Stay	Turnover Interval	% Day Cases
Royal Victoria	0.6	0.6	1	0	5	13	100.0	28.7	12.7	0.0	16.7
Belfast HSCT	0.6	0.6	1	0	5	13	100.0	28.7	12.7	0.0	16.7
NI Total	0.6	0.6	1	0	5	13	100.0	28.7	12.7	0.0	16.7

Source: Hospital Inpatient System & KH03a

Table 34: Specialty 361 - Inpatient and Day Case Activity Data by Hospital/HSC Trust for Nephrology, 2009/2010

Hospital/ HSC Trust	Average Available Beds	Average Occupied Beds	Regular Day and Night Day Cases Attendees	Regular Day and Night Day Cases Attendees	Elective Inpatients	Non Elective Inpatients	% Occupancy	% Throughput	Average Length of Stay	Turnover Interval	% Day Cases
Belfast City	61.3	47.6	402	32,995	601	265	77.7	14.1	20.1	5.7	40.1
Belfast HSCT	61.3	47.6	402	32,995	601	265	77.7	14.1	20.1	5.7	40.1
Antrim	29.3	15.6	0	16,238	2,180	108	53.3	78.0	2.5	2.2	0.0
Braid Valley	0.0	0.0	0	0	0	0	0.0	0.0	0.0	0.0	0.0
Whiteabbey	0.0	0.0	7	0	0	0	0.0	0.0	0.0	0.0	100.0
Northern HSCT	29.3	15.6	7	16,238	2,180	108	53.3	78.0	2.5	2.2	0.3
Ards	0.0	0.0	19	0	0	0	0.0	0.0	0.0	0.0	100.0
Ulster	2.0	2.0	31	13,509	34	64	100.0	50.2	7.3	0.0	47.7
South Eastern HSCT	2.0	2.0	50	13,509	34	64	100.0	50.2	7.3	0.0	59.5
Daisy Hill	3.8	3.8	32	14,203	103	129	100.0	60.5	6.0	0.0	23.7
Southern HSCT	3.8	3.8	32	14,203	103	129	100.0	60.5	6.0	0.0	23.7
Altnagelvin Area	4.9	4.9	33	9,101	24	139	100.0	33.3	11.0	0.0	57.9
Erne	0.0	0.0	0	0	0	2	0.0	0.0	0.0	0.0	0.0
Tyrone County	0.0	0.0	11	13,784	16	18	0.0	0.0	0.0	0.0	40.7
Western HSCT	4.9	4.9	44	22,885	40	159	100.0	40.6	9.0	0.0	52.4
NI Total	101.3	74.0	535	99,830	2,958	725	73.0	36.4	7.3	0.0	15.3

Source: Hospital Inpatient System & KH03a

Table 35: Specialty 370 - Inpatient and Day Case Activity Data by Hospital/HSC Trust for Medical Oncology, 2009/2010

Hospital/ HSC Trust	Average Available Beds	Average Occupied Beds	Day Cases	Regular Day and Night Attenders	Elective Inpatients	Non Elective Inpatients	% Occupancy	% Throughput	Average Length of Stay	Turnover Interval	% Day Cases
Belfast City	0.7	0.7	1	0	3	79	100.0	120.2	3.0	0.0	25.0
Cancer Centre	24.8	16.3	4,134	0	707	319	65.7	41.3	5.8	3.0	85.4
Belfast HSCT	25.5	17.0	4,135	0	710	398	66.6	43.5	5.6	2.8	85.3
Antrim	0.0	0.0	921	0	0	3	0.0	0.0	0.0	0.0	100.0
Northern HSCT	0.0	0.0	921	0	0	3	0.0	0.0	0.0	0.0	100.0
NI Total	25.5	17.0	5,056	0	710	401	66.6	43.6	5.6	2.8	87.7

Source: Hospital Inpatient System & KH03a

Table 36: Specialty 400 - Inpatient and Day Case Activity Data by Hospital/HSC Trust for Neurology, 2009/2010

Hospital/ HSC Trust	Average Available Beds	Average Occupied Beds	Regular Day and Night Attenders	Day Cases	Elective Inpatients	Non Elective Inpatients	% Occupancy	% Throughput	Average Length of Stay	Turnover Interval	% Day Cases
Forster Green	22.6	20.1	0	0	309	8	89.1	14.0	23.1	2.8	0.0
Royal Victoria	25.9	24.8	670	0	277	356	95.8	24.4	14.3	0.6	70.7
Belfast HSCT	48.5	44.9	670	0	586	364	92.6	19.6	17.3	1.4	53.3
Mid Ulster	0.0	0.0	5	0	0	0	0.0	0.0	0.0	0.0	100.0
Northern HSCT	0.0	0.0	5	0	0	0	0.0	0.0	0.0	0.0	100.0
Thompson House	35.0	31.3	0	0	255	13	89.4	7.7	42.6	5.0	0.0
Ulster	0.0	0.0	16	0	0	0	0.0	0.0	0.0	0.0	100.0
South Eastern HSCT	35.0	31.3	16	0	255	13	89.4	7.7	42.6	5.0	5.9
Craigavon Area	0.0	0.0	86	0	2	1	0.0	0.0	0.0	0.0	97.7
Southern HSCT	0.0	0.0	86	0	2	1	0.0	0.0	0.0	0.0	97.7
Altnagelvin Area	0.7	0.7	0	0	0	6	100.0	8.3	45.4	0.0	0.0
Western HSCT	0.7	0.7	0	0	0	6	100.0	8.3	45.4	0.0	0.0
NI Total	84.2	77.0	777	0	843	384	91.4	14.6	22.9	2.2	48.0

Source: Hospital Inpatient System & KH03a

Table 37: Specialty 410 - Inpatient and Day Case Activity Data by Hospital/HSC Trust for Rheumatology, 2009/2010

Hospital/ HSC Trust	Average Available Beds	Average Occupied Beds	Regular Day and Night Attenders	Day Cases	Elective Inpatients	Non Elective Inpatients	% Occupancy	% Throughput	Average Length of Stay	Turnover Interval	% Day Cases
Musgrave Park	20.5	13.5	0	6,056	470	133	65.9	29.4	8.2	4.2	92.8
Royal Victoria	0.0	0.0	0	1,775	0	0	0.0	0.0	0.0	0.0	100.0
Belfast HSCT	20.5	13.5	0	7,831	470	133	65.9	29.4	8.2	4.2	94.3
Antrim	1.4	0.6	0	261	29	7	41.4	25.4	5.9	8.4	90.0
Northern HSCT	1.4	0.6	0	261	29	7	41.4	25.4	5.9	8.4	90.0
Banbridge	0.0	0.0	0	922	0	0	0.0	0.0	0.0	0.0	100.0
Craigavon Area	0.3	0.3	0	1,200	8	11	100.0	57.3	6.4	0.0	99.3
South Tyrone	0.0	0.0	0	313	0	0	0.0	0.0	0.0	0.0	100.0
Southern HSCT	0.3	0.3	0	2,435	8	11	100.0	57.3	6.4	0.0	99.7
NI Total	22.3	14.5	0	10,527	507	151	64.8	29.5	8.0	4.3	95.4

Source: Hospital Inpatient System & KH03a

Table 38: Specialty 420 - Inpatient and Day Case Activity Data by Hospital/HSC Trust for Paediatrics, 2009/2010

Hospital/ HSC Trust	Average Available Beds	Average Occupied Beds	Regular Day and Night Attenders	Regular Day Cases	Elective Inpatients	Non Elective Inpatients	% Occupancy	% Throughput	Average Length of Stay	Turnover Interval	% Day Cases
RBHSC ²⁸	88.6	73.0	0	4,304	1,883	4,088	82.4	67.4	4.5	1.0	69.6
Royal Maternity	45.0	26.8	0	0	0	323	59.5	7.2	30.2	20.6	0.0
Royal Victoria	0.0	0.0	0	0	0	1	0.0	0.0	0.0	0.0	0.0
Belfast HSCT	133.6	99.8	0	4,304	1,883	4,412	74.7	47.1	5.8	2.0	69.6
Antrim	32.2	24.7	0	0	91	2,540	76.7	81.8	3.4	1.0	0.0
Causeway	9.1	4.4	0	0	62	1,432	48.1	164.7	1.1	1.1	0.0
Mid Ulster	0.0	0.0	4	0	0	0	0.0	0.0	0.0	0.0	100.0
Northern HSCT	41.2	29.0	0	4	153	3,972	70.4	100.0	2.6	1.1	2.5
Lagan Valley	2.0	0.1	0	0	0	58	3.2	29.0	0.4	12.2	0.0
Ulster	36.6	26.2	0	298	46	3,658	71.4	101.1	2.6	1.0	86.6
South Eastern HSCT	38.6	26.2	0	298	46	3,716	67.9	97.4	2.5	1.2	86.6
Craigavon Area	37.2	23.8	0	43	29	2,574	64.0	70.0	3.3	1.9	59.7
Daisy Hill	17.6	11.4	0	148	24	1,376	64.7	79.5	3.0	1.6	86.0
Southern HSCT	54.8	35.2	0	191	53	3,950	64.2	73.1	3.2	1.8	78.3
Altnagelvin Area	54.7	24.1	0	135	232	2,962	44.2	58.4	2.8	3.5	36.8
Erne	21.0	10.5	0	1	52	1,803	50.3	88.4	2.1	2.1	1.9
Tyrone County	0.0	0.0	0	40	0	0	0.0	0.0	0.0	0.0	100.0
Western HSCT	75.6	34.7	0	176	284	4,765	45.9	66.8	2.5	3.0	38.3
NI Total	343.9	224.9	0	4,973	2,419	20,815	65.4	67.6	3.5	1.9	67.3

Source: Hospital Inpatient System & KH03a

²⁸ Refer to Appendix 5: Explanatory Notes – Point 8.

Table 39: Specialty 430 - Inpatient and Day Case Activity Data by Hospital/HSC Trust for Geriatric Medicine, 2009/2010

Hospital/ HSC Trust	Average Available Beds	Average Occupied Beds	Day Cases	Inpatients	% Occupancy	Throughput	Average Length of Stay	Turnover Interval
Belfast City	67.5	64.8	0	1,317	96.0	19.5	18.0	0.7
Cancer Centre	0.1	0.1	0	2	100.0	33.2	11.0	0.0
Musgrave Park	69.9	60.6	0	601	86.6	8.6	36.8	5.7
Royal Victoria	81.1	69.3	0	1,895	85.4	23.4	13.3	2.3
Belfast HSCT	218.6	194.7	0	3,815	89.1	17.5	18.6	2.3
Antrim	0.5	0.3	0	10	62.9	20.5	11.2	6.6
Braid Valley	32.2	26.4	0	320	82.0	10.0	30.1	6.6
Moyle	4.5	2.1	0	25	47.6	5.6	31.1	34.2
Whiteabbey	28.8	22.5	0	318	78.1	11.0	25.9	7.2
Northern HSCT	65.9	51.3	0	673	77.8	10.2	27.8	7.9
Ards	2.2	1.8	0	52	81.9	23.2	12.9	2.8
Downe	6.0	3.5	0	92	58.3	15.3	13.9	9.9
Lagan Valley	27.7	22.8	0	484	82.2	17.5	17.2	3.7
Ulster	78.0	75.9	632	1,842	97.3	23.6	15.0	0.4
South Eastern HSCT	114.0	104.0	632	2,470	91.3	21.7	15.4	1.5
Craigavon Area	31.3	30.5	3	1,358	97.4	43.4	8.2	0.2
Daisy Hill	33.1	24.8	1	424	74.8	12.8	21.3	7.2
Lurgan	38.8	34.8	0	541	89.6	13.9	23.5	2.7
Mullinure	24.4	18.6	0	283	76.2	11.6	24.0	7.5
South Tyrone	33.9	29.0	0	332	85.6	9.8	31.9	5.4
Southern HSCT	161.5	137.6	4	2,938	85.2	18.2	17.1	3.0

Table 39: Specialty 430 - Continued

Hospital/ HSC Trust	Average Available Beds	Average Occupied Beds	Day Cases	Inpatients	% Occupancy	Throughput	Average Length of Stay	Turnover Interval
Altnagelvin Area	46.9	44.7	0	897	95.4	19.1	18.2	0.9
Erne	42.3	31.7	0	772	75.0	18.3	15.0	5.0
NWIH	3.7	2.3	0	21	61.4	5.6	39.9	25.1
Tyrone County	20.9	13.6	0	92	65.0	4.4	53.8	29.0
Waterside	78.0	61.2	0	269	78.5	3.4	83.0	22.8
Western HSCT	191.8	153.5	0	2,051	80.1	10.7	27.3	6.8
NI Total	751.7	641.2	636	11,947	85.3	15.9	19.6	3.4

Source: KH03a

Table 40: Specialty 501 - Inpatient and Day Case Activity Data by Hospital/HSC Trust for Obs & Gynae (Obstetrics), 2009/2010

Hospital/ HSC Trust	Average Available Beds	Average Occupied Beds	Day Cases	Inpatients	% Occupancy	Throughput	Average Length of Stay	Turnover Interval
Mater Infirmorum	22.5	9.0	0	1,430	39.9	63.5	2.3	3.5
Royal Maternity ²⁶	67.5	56.8	1,009	6,484	84.1	96.0	3.2	0.6
Belfast HSCT	90.0	65.8	1,009	7,914	73.0	87.9	3.0	1.1
Antrim	45.2	27.9	0	3,445	61.8	76.2	3.0	1.8
Causeway Hospital	22.3	13.7	0	1,905	61.7	85.5	2.6	1.6
Northern HSCT	67.5	41.7	0	5,350	61.8	79.3	2.8	1.8
Lagan Valley	20.0	7.6	1	1,278	38.2	64.0	2.2	3.5
Ulster	34.4	24.4	0	3,501	71.1	101.9	2.5	1.0
South Eastern HSCT	54.3	32.1	1	4,779	59.0	87.9	2.4	1.7
Craigavon Area	49.0	34.8	0	4,746	71.0	96.8	2.7	1.1
Daisy Hill	28.0	15.8	0	2,477	56.3	88.5	2.3	1.8
Southern HSCT	77.0	50.6	0	7,223	65.7	93.8	2.6	1.3
Altnagelvin Area	33.0	24.0	0	3,202	72.7	96.9	2.7	1.0
Erne	19.1	13.7	0	1,935	72.0	101.4	2.6	1.0
Western HSCT	52.1	37.8	0	5,137	72.5	98.6	2.7	1.0
NI Total	341.0	227.8	1,010	30,403	66.8	89.2	2.7	1.4

Source: KH03a

²⁶ Refer to Appendix 5: Explanatory Notes – Point 17.

Table 41: Specialty 502 - Inpatient and Day Case Activity Data by Hospital/HSC Trust for Gynaecology, 2009/2010

Hospital/ HSC Trust	Average Available Beds	Average Occupied Beds	Regular Day and Night Attenders	Day Cases	Elective Inpatients	Non Elective Inpatients	% Occupancy	% Throughput	Average Length of Stay	Turnover Interval	% Day Cases
Belfast City	19.5	17.3	0	537	1,150	56	88.7	61.8	5.2	0.7	31.8
Royal Maternity	0.0	0.0	0	2	0	0	0.0	0.0	0.0	0.0	100.0
Royal Victoria	14.0	7.5	0	715	542	1,068	53.3	115.0	1.7	1.5	56.9
Mater Infirmorum	6.1	4.6	0	373	468	242	75.6	117.0	2.4	0.8	44.4
Belfast HSCT	39.6	29.3	0	1,627	2,160	1,366	74.1	89.1	3.0	1.1	43.0
Antrim	13.1	10.7	0	501	822	640	81.9	111.7	2.7	0.6	37.9
Causeway	8.5	5.4	0	536	408	369	63.5	91.4	2.5	1.5	56.8
Mid Ulster	0.0	0.0	0	471	7	0	0.0	0.0	0.0	0.0	98.5
Whiteabbey ²⁵	0.1	0.1	0	483	36	0	100.0	273.8	1.3	0.0	93.1
Northern HSCT	21.7	16.2	0	1,991	1,273	1,009	74.8	105.0	2.6	0.9	61.0
Ards	0.0	0.0	0	1,104	19	0	0.0	0.0	0.0	0.0	98.3
Downe	0.0	0.0	0	135	0	0	0.0	0.0	0.0	0.0	100.0
Lagan Valley	8.0	3.0	0	635	370	175	37.6	68.5	2.0	3.3	63.2
Ulster	15.3	11.3	1	75	960	635	73.8	104.6	2.6	0.9	7.2
South Eastern HSCT	23.2	14.2	1	1,949	1,349	810	61.4	93.0	2.4	1.5	59.1
Craigavon Area	17.3	9.8	0	672	975	809	56.8	103.4	2.0	1.5	40.8
Daisy Hill	7.5	3.5	0	391	273	430	46.5	93.7	1.8	2.1	58.9
South Tyrone	0.0	0.0	0	331	1	0	0.0	0.0	0.0	0.0	99.7
Southern HSCT	24.8	13.3	0	1,394	1,249	1,239	53.7	100.5	2.0	1.7	52.7
Altnagelvin Area	14.5	9.8	0	693	915	532	67.5	100.0	2.5	1.2	43.1
Erne	7.6	4.5	0	661	325	541	60.1	114.5	1.9	1.3	67.0
Tyrone County	0.0	0.0	0	311	0	0	0.0	0.0	0.0	0.0	100.0
Western HSCT	22.0	14.3	0	1,665	1,240	1,073	65.0	105.0	2.3	1.2	57.3
NI Total	131.3	87.5	1	8,626	7,271	5,497	66.6	97.2	2.5	1.3	54.3

Source: Hospital Inpatient System & KH03a

²⁵ Refer to Appendix 5: Explanatory Notes – Point 18.

Table 42: Specialty 540 - Inpatient and Day Case Activity Data by Hospital/HSC Trust for Well Babies (Obstetrics), 2009/2010

Hospital/ HSC Trust	Average Available Beds	Average Occupied Beds	Day Cases	Inpatients	% Occupancy	Throughput	Average Length of Stay	Turnover Interval
Mater Infirmorum	6.4	6.4	0	1,152	100.0	180.7	2.0	0.0
Belfast HSCT	6.4	6.4	0	1,152	100.0	180.7	2.0	0.0
Antrim	37.1	15.3	0	2,545	41.3	68.6	2.2	3.1
Causeway Hospital	15.9	8.5	0	1,426	53.5	89.4	2.2	1.9
Northern HSCT	53.0	23.9	0	3,971	45.0	74.9	2.2	2.7
Ulster	32.9	14.0	0	2,766	42.7	84.1	1.9	2.5
South Eastern HSCT	32.9	14.0	0	2,766	42.7	84.1	1.9	2.5
NI Total	92.3	44.3	0	7,889	48.0	85.5	2.0	2.2

Source: KH03a

Table 43: Specialty 550 - Inpatient and Day Case Activity Data by Hospital/HSC Trust for Well Babies (Paediatrics), 2009/2010

Hospital/ HSC Trust	Average Available Beds	Average Occupied Beds	Day Cases	Inpatients	% Occupancy	Throughput	Average Length of Stay	Turnover Interval
Royal Maternity	45.4	26.7	0	4,505	58.9	99.2	2.2	1.5
Belfast HSC Trust	45.4	26.7	0	4,505	58.9	99.2	2.2	1.5
Lagan Valley	14.0	5.2	0	1,023	36.9	73.1	1.8	3.2
South Eastern HSC Trust	14.0	5.2	0	1,023	36.9	73.1	1.8	3.2
Craigavon Area	41.5	21.1	0	3,793	50.7	91.4	2.0	2.0
Daisy Hill	26.9	11.0	0	2,055	40.9	76.3	2.0	2.8
Southern HSC Trust	68.5	32.1	0	5,848	46.9	85.4	2.0	2.3
Altnagelvin Area	13.6	13.6	0	2,659	100.0	195.2	1.9	0.0
Erne	7.0	7.0	0	1,239	100.0	176.5	2.1	0.0
Western HSC Trust	20.6	20.6	0	3,898	100.0	188.8	1.9	0.0
NI Total	148.5	84.6	0	15,274	57.0	102.8	2.0	1.5

Source: KH03a

Table 44: Specialty 620 - Inpatient and Day Case Activity Data by Hospital/HSC Trust for General Practice Other, 2009/2010

Hospital/ HSC Trust	Average Available Beds	Average Occupied Beds	Regular Day and Night Attenders	Day Cases	Elective Inpatients	Non Elective Inpatients	% Occupancy	% Throughput	Average Length of Stay	Turnover Interval	% Day Cases
Mater Infirmorum	0.0	0.0	0	0	1	0	0.0	0.0	0.0	0.0	0.0
Belfast HSC Trust	0.0	0.0	0	0	1	0	0.0	0.0	0.0	0.0	0.0
Antrim	0.0	0.0	0	358	0	0	0.0	0.0	0.0	0.0	100.0
Causeway	0.0	0.0	0	668	1	0	0.0	0.0	0.0	0.0	99.9
Dalriada	32.0	23.9	0	0	229	173	74.8	12.6	21.7	7.3	0.0
Mid Ulster	0.0	0.0	0	270	0	0	0.0	0.0	0.0	0.0	100.0
Moyle	14.8	10.1	0	0	4	95	68.3	6.7	37.2	17.3	0.0
Robinson Memorial	25.0	20.4	0	0	24	145	81.7	6.8	44.1	9.9	0.0
Northern HSC Trust	71.8	54.4	0	1,296	258	413	75.9	9.3	29.6	9.4	83.4
Ards	17.2	14.3	0	0	4	375	83.2	22.0	13.8	2.8	0.0
Bangor	20.0	16.2	0	1	4	509	81.1	25.7	11.5	2.7	20.0
Downe	0.0	0.0	0	272	0	0	0.0	0.0	0.0	0.0	100.0
Lagan Valley	0.0	0.0	0	379	0	0	0.0	0.0	0.0	0.0	100.0
Ulster	0.0	0.0	0	972	0	0	0.0	0.0	0.0	0.0	100.0
South Eastern HSC Trust	37.2	30.5	0	1,624	8	884	82.0	24.0	12.5	2.7	99.5
Craigavon Area	0.0	0.0	0	509	0	0	0.0	0.0	0.0	0.0	100.0
Daisy Hill	0.0	0.0	0	853	0	0	0.0	0.0	0.0	0.0	100.0
South Tyrone	0.0	0.0	0	365	0	0	0.0	0.0	0.0	0.0	100.0
Southern HSC Trust	0.0	0.0	0	1,727	0	0	0.0	0.0	0.0	0.0	100.0
Altnagelvin Area	0.0	0.0	0	771	1	0	0.0	0.0	0.0	0.0	99.9
Erne	0.0	0.0	0	5	0	0	0.0	0.0	0.0	0.0	100.0
Tyrone County	0.0	0.0	0	1	0	0	0.0	0.0	0.0	0.0	100.0
Western HSC Trust	0.0	0.0	0	777	1	0	0.0	0.0	0.0	0.0	99.9
NI Total	109.0	85.0	0	5,424	268	1,297	78.0	14.4	19.8	5.6	95.3

Source: Hospital Inpatient System & KH03a

Table 45: Specialty 700 - Inpatient and Day Case Activity Data by Hospital/HSC Trust for Learning Disability, 2009/2010

Hospital/ HSC Trust	Average Available Beds	Average Occupied Beds	Day Cases	Inpatients	% Occupancy	Throughput	Average Length of Stay	Turnover Interval
Muckamore Abbey	255.8	242.8	0	136	94.9	0.5	651.6	34.9
Musgrave Park	7.9	6.6	4	1,171	83.9	148.8	2.1	0.4
Belfast HSCT	263.7	249.4	4	1,307	94.6	5.0	69.6	4.0
Longstone	82.2	72.2	0	237	87.8	2.9	111.2	15.4
Southern HSCT	82.2	72.2	0	237	87.8	2.9	111.2	15.4
Lakeview	53.0	47.5	5	226	89.7	4.3	76.7	8.8
Western HSCT	53.0	47.5	5	226	89.7	4.3	76.7	8.8
NI Total	398.9	369.1	9	1,770	92.5	4.4	76.1	6.1

Source: KH03a

Table 46: Specialty 710 - Inpatient and Day Case Activity Data by Hospital/HSC Trust for Mental Illness, 2009/2010

Hospital/ HSC Trust	Average Available Beds	Average Occupied Beds	Day Cases	Inpatients	% Occupancy	Throughput	Average Length of Stay	Turnover Interval
Knockbracken	178.0	150.0	0	281	84.2	1.6	194.8	36.4
Mater Infirmorum	48.6	42.2	117	335	86.9	6.9	46.0	6.9
Windsor House	35.0	30.7	0	268	87.8	7.7	41.9	5.8
Belfast HSCT	261.6	222.9	117	884	85.2	3.4	92.0	16.0
Causeway	26.3	29.0	0	229	100.0	8.7	46.3	0.0
Holywell	156.2	145.4	0	764	93.1	4.9	69.5	5.1
Whiteabbey PNU	12.3	9.5	0	75	77.0	6.1	46.1	13.8
Northern HSCT	194.8	183.9	0	1,068	94.4	5.5	62.9	3.7
Ards	4.2	4.1	0	52	97.6	12.5	28.6	0.7
Downshire	94.0	88.8	0	486	94.4	5.2	66.7	3.9
Lagan Valley PNU	24.2	23.6	0	405	97.2	16.7	21.2	0.6
Ulster MHU	21.0	20.8	0	236	98.8	11.2	32.1	0.4
South Eastern HSCT	143.5	137.2	0	1,179	95.6	8.2	42.5	1.9
Bluestone	49.9	50.5	0	863	100.0	17.3	21.4	0.0
St Luke's	130.1	101.2	0	703	77.8	5.4	52.5	15.0
Southern HSCT	180.0	151.7	0	1,566	84.3	8.7	35.4	6.6
Altnagelvin Area	0.0	0.0	158	0	0.0	0.0	0.0	0.0
Gransha	54.0	59.1	0	542	100.0	10.0	39.8	0.0
Tyrone & Fermanagh	100.7	83.4	0	678	82.9	6.7	44.9	9.3
Western HSCT	154.7	142.5	158	1,220	92.1	7.9	42.6	3.6
NI Total	934.5	838.3	275	5,917	89.7	6.3	51.7	5.9

Source: KH03a

Table 47: Specialty 711 - Inpatient and Day Case Activity Data by Hospital/HSC Trust for Child & Adolescent Psychiatry, 2009/2010

Hospital/ HSC Trust	Average Available Beds	Average Occupied Beds	Day Cases	Inpatients	% Occupancy	Throughput	Average Length of Stay	Turnover Interval
Beechcroft CAMHS	12.0	13.6	30	29	100.0	2.4	171.2	0.0
Forster Green	15.0	11.9	0	35	79.3	2.3	124.1	32.3
Belfast HSCT	27.0	25.5	30	64	94.5	2.4	145.5	8.5
Bluestone	0.0	0.5	0	19	0.0	0.0	9.2	0.0
Southern HSCT	0.0	0.5	0	19	0.0	0.0	9.2	0.0
Gransha	0.0	0.1	0	1	0.0	0.0	20.0	0.0
Western HSCT	0.0	0.1	0	1	0.0	0.0	20.0	0.0
NI Total	27.0	26.0	30	84	96.4	3.1	113.1	4.2

Source: KH03a

Table 48: Specialty 712 - Inpatient and Day Case Activity Data by Hospital/HSC Trust for Forensic Psychiatry, 2009/2010

Hospital/ HSC Trust	Average Available Beds	Average Occupied Beds	Day Cases	Inpatients	% Occupancy	Throughput	Average Length of Stay	Turnover Interval
Knockbracken	34.0	32.6	0	17	95.8	0.5	699.2	30.8
Belfast HSCT	34.0	32.6	0	17	95.8	0.5	699.2	30.8
NI Total	34.0	32.6	0	17	95.8	0.5	699.2	30.8

Source: KH03a

Table 49: Specialty 713 - Inpatient and Day Case Activity Data by Hospital/HSC Trust for Psychotherapy, 2009/2010

Hospital/ HSC Trust	Average Available Beds	Average Occupied Beds	Day Cases	Inpatients	% Occupancy	Throughput	Average Length of Stay	Turnover Interval
Shaftesbury Square	0.0	0.0	2,645	0	0.0	0.0	0.0	0.0
Belfast HSCT	0.0	0.0	2,645	0	0.0	0.0	0.0	0.0
NI Total	0.0	0.0	2,645	0	0.0	0.0	0.0	0.0

Source: KH03a

Table 50: Specialty 715 - Inpatient and Day Case Activity Data by Hospital/HSC Trust for Old Age Psychiatry, 2009/2010

Hospital/ HSC Trust	Average Available Beds	Average Occupied Beds	Day Cases	Inpatients	% Occupancy	Throughput	Average Length of Stay	Turnover Interval
Knockbracken	84.0	57.6	0	75	68.6	0.9	280.2	128.6
Mater Infirmorum	5.7	5.7	0	35	100.0	6.1	59.8	0.0
Belfast HSCT	89.7	63.3	0	110	70.6	1.2	210.1	87.7
Causeway	6.6	6.5	0	13	98.3	2.0	182.6	3.2
Holywell	64.3	58.2	0	91	90.6	1.4	233.5	24.3
Northern HSCT	70.9	64.7	0	104	91.3	1.5	227.1	21.7
Downshire	41.9	35.3	0	118	84.4	2.8	109.3	20.2
Lagan Valley PNU	15.8	15.5	0	117	98.5	7.4	48.4	0.7
South Eastern HSCT	57.6	50.9	0	235	88.3	4.1	79.0	10.5
Bluestone	19.3	15.5	0	120	80.5	6.2	47.1	11.4
Southern HSCT	19.3	15.5	0	120	80.5	6.2	47.1	11.4
Gransha	55.0	46.8	0	138	85.2	2.5	123.9	21.6
Western HSCT	55.0	46.8	0	138	85.2	2.5	123.9	21.6
NI Total	292.5	241.2	0	707	82.5	2.4	124.5	26.5

Source: KH03a

Table 51: Specialty 800 - Inpatient and Day Case Activity Data by Hospital/HSC Trust for Clinical Oncology, 2009/2010

Hospital/ HSC Trust	Average Available Beds	Average Occupied Beds	Regular Day and Night Attenders	Day Cases	Elective Inpatients	Non Elective Inpatients	% Occupancy	% Throughput	Average Length of Stay	Turnover Interval	% Day Cases
Belfast City	0.9	0.9	0	1	3	107	100.0	125.1	2.9	0.0	25.0
Cancer Centre	53.0	53.0	0	4,420	1,840	557	99.9	45.2	8.1	0.0	70.6
Belfast HSCT	53.9	53.8	0	4,421	1,843	664	99.9	46.5	7.8	0.0	70.6
Antrim	0.0	0.0	0	1,340	0	0	0.0	0.0	0.0	0.0	100.0
Northern HSCT	0.0	0.0	0	1,340	0	0	0.0	0.0	0.0	0.0	100.0
Ulster	0.0	0.0	2,092	145	0	6	0.0	0.0	0.0	0.0	100.0
South Eastern HSCT	0.0	0.0	2,092	145	0	6	0.0	0.0	0.0	0.0	100.0
Craigavon Area	0.0	0.0	2,303	189	2	0	0.0	0.0	0.0	0.0	99.0
Southern HSCT	0.0	0.0	2,303	189	2	0	0.0	0.0	0.0	0.0	99.0
Altnagelvin Area	0.0	0.0	1,486	393	0	0	0.0	0.0	0.0	0.0	100.0
Western HSCT	0.0	0.0	1,486	393	0	0	0.0	0.0	0.0	0.0	100.0
NI Total	53.9	53.8	5,881	6,488	1,845	670	99.9	46.7	7.8	0.0	77.9

Source: Hospital Inpatient System & KH03a

Table 52: Specialty 810 - Inpatient and Day Case Activity Data by Hospital/HSC Trust for Radiology, 2009/2010

Hospital/ HSC Trust	Average Available Beds	Average Occupied Beds	Regular Day and Night Attenders	Day Cases	Elective Inpatients	Non Elective Inpatients	% Occupancy	% Throughput	Average Length of Stay	Turnover Interval	% Day Cases
Belfast City	0.0	0.0	0	38	17	1	0.0	0.0	0.0	0.0	69.1
Cancer Centre	0.1	0.1	0	0	0	0	100.0	0.0	0.0	0.0	0.0
Royal Victoria	0.0	0.0	0	122	0	0	0.0	0.0	0.0	0.0	100.0
Belfast HSCT	0.1	0.1	0	160	17	1	100.0	234.6	1.6	0.0	90.4
Altnagelvin Area	0.0	0.0	0	60	0	0	0.0	0.0	0.0	0.0	100.0
Western HSCT	0.0	0.0	0	60	0	0	0.0	0.0	0.0	0.0	100.0
NI Total	0.1	0.1	0	220	17	1	100.0	234.6	1.6	0.0	92.8

Source: Hospital Inpatient System & KH03a

Table 53: Specialty 823 - Inpatient and Day Case Activity Data by Hospital/HSC Trust for Haematology, 2009/2010

Hospital/ HSC Trust	Average Available Beds	Average Occupied Beds	Day Cases	Regular Day and Night Attenders	Elective Inpatients	Non Elective Inpatients	% Occupancy	% Throughput	Average Length of Stay	Turnover Interval	% Day Cases
Causeway	0.0	0.0	70	0	0	0	0.0	0.0	0.0	0.0	100.0
Northern HSCT	0.0	0.0	70	0	0	0	0.0	0.0	0.0	0.0	100.0
NI Total	0.0	0.0	70	0	0	0	0.0	0.0	0.0	0.0	100.0

Source: Hospital Inpatient System & KH03a

Appendix 1: Inpatient and Day Case Specialties in each Hospital during 2009/2010

Hospital	Specialties
Altnagelvin	General Surgery, Urology, Trauma & Orthopaedics, Ear, Nose & Throat, Ophthalmology, Oral Surgery, Restorative Dentistry, Orthodontics, Neurosurgery, Thoracic Surgery, Anaesthetics, Pain Management, General Medicine, Haematology (Clinical), Palliative Medicine, Cardiology, Dermatology, Nephrology, Neurology, Paediatrics, Paediatric, Geriatric Medicine, Obstetrics, Gynaecology, Well Babies (Paediatrics), General Practice (Other), Mental Illness, Clinical Oncology, Radiology.
Antrim	General Surgery, Ear, Nose & Throat, Oral Surgery, Accident & Emergency, Anaesthetics, Pain Management, General Medicine, Gastroenterology, Haematology (Clinical), Cardiology, Dermatology, Infectious Diseases, Nephrology, Medical Oncology, Rheumatology, Paediatrics, Geriatric Medicine, Obstetrics, Gynaecology, Obstetrics (Ante Natal), Obstetrics (Post Natal), Well Babies (Obstetrics), General Practice (Other), Clinical Oncology.
Ards	General Surgery, Urology, Plastic Surgery, Accident & Emergency, General Medicine, Nephrology, Geriatric Medicine, Gynaecology, General Practice (Other), Mental Illness.
Banbridge	Rheumatology.
Bangor	General Practice (Other).
Belfast City	General Surgery, Urology, Trauma & Orthopaedics, Ear, Nose & Throat, Plastic Surgery, Thoracic Surgery, Accident & Emergency, Pain Management, General Medicine, Gastroenterology, Haematology (Clinical), Cardiology, Dermatology, Thoracic Medicine, Nephrology, Medical Oncology, Geriatric Medicine, Gynaecology, Clinical Oncology, Radiology.
Cancer Centre	General Surgery, Ear Nose and Throat, Thoracic Surgery, General Medicine, Gastroenterology, Haematology (Clinical), Palliative Medicine, Geriatric Medicine, Clinical Oncology, Radiology.
Beechcroft	Child & Adolescent Psychiatry
Braid Valley	General Medicine, Palliative Medicine, Cardiology, Nephrology, Geriatric Medicine.

Appendix 1: Continued

Causeway	General Surgery, Urology, Ear Nose and Throat, Pain Management, General Medicine, Endocrinology, Cardiology, Dermatology, Paediatrics, Obstetrics, Gynaecology, Well Babies (Obstetrics), General Practice (Other), Mental Illness, Old Age Psychiatry, Haematology.
Craigavon Area	General Surgery, Urology, Trauma & Orthopaedics, Ear, Nose & Throat, Ophthalmology, Oral Surgery, Paediatric Dentistry, Accident & Emergency, Anaesthetics, Pain Management, General Medicine, Gastroenterology, Haematology (Clinical), Rehabilitation, Palliative Medicine, Cardiology, Dermatology, Thoracic Medicine, Neurology, Rheumatology, Paediatrics, Geriatric Medicine, Obstetrics, Gynaecology, Well Babies (Paediatrics), General Practice (Other), Clinical Oncology
Bluestone	Mental Illness, Child & Adolescent Psychiatry, Old Age Psychiatry
Daisy Hill	General Surgery, Urology, Ear, Nose & Throat, Oral Surgery, Pain Management, General Medicine, Endocrinology, Cardiology, Dermatology, Nephrology, Paediatrics, Geriatric Medicine, Obstetrics, Gynaecology, Well Babies (Paediatrics), General Practice (Other).
Dalriada	General Practice (Other)
Downe	General Surgery, Urology, Trauma & Orthopaedics, Ear, Nose & Throat, Ophthalmology, Accident & Emergency, General Medicine, Gastroenterology, Geriatric Medicine, Gynaecology, General Practice (Other).
Downshire	Mental Illness, Old Age Psychiatry
Erne	General Surgery, Oral Surgery, General Medicine, Rehabilitation, Cardiology, Paediatrics, Geriatric Medicine, Obstetrics, Gynaecology, Well Babies (Paediatrics)
Forest Lodge	Learning Disability
Forster Green	Neurology, Child & Adolescent Psychiatry
Gransha	Mental Illness, Child & Adolescent Psychiatry, Old Age Psychiatry
Holywell	Mental Illness, Old Age Psychiatry.
Knockbracken	Mental Illness, Forensic Psychiatry, Old Age Psychiatry

Appendix 1: Continued

Lagan Valley	General Surgery, Urology, Ear, Nose & Throat, Ophthalmology, Neurosurgery, Plastic Surgery, Accident & Emergency, General Medicine, Paediatrics, Geriatric Medicine, Obstetrics, Gynaecology, Well Babies (Paediatrics), General Practice (Other)
Lagan Valley PNU	Mental Illness, Old Age Psychiatry
Lakeview	Learning Disability
Longstone	Learning Disability
Lurgan	Rehabilitation, Dermatology, Geriatric Medicine.
Mater	General Surgery, Urology, Ear, Nose & Throat, Ophthalmology, Oral Surgery, Accident & Emergency, Pain Management, General Medicine, Cardiology, Obstetrics, Gynaecology, Well Babies (Obstetrics), Mental Illness, Old Age Psychiatry.
Mid-Ulster	General Surgery, Ear, Nose & Throat, General Medicine, Gastroenterology, Haematology (Clinical), Neurology, Paediatrics, Gynaecology, General Practice (Other).
Moyle	General Medicine, Palliative Medicine, Geriatric Medicine, General Practice (Other).
Muckamore Abbey	Learning Disability.
Mullinure	Geriatric Medicine
Musgrave Park	Trauma & Orthopaedics, Rehabilitation, Rheumatology, Geriatric Medicine, Learning Disability
NWIH	Geriatric Medicine
RBHSC	Anaesthetics, Paediatrics.
Robinson Memorial	General Practice (Other)
Royal Maternity	Paediatrics, Obstetrics, Well Babies (Paediatrics).
Royal Victoria	General Surgery, Urology, Trauma & Orthopaedics, Ear, Nose & Throat, Ophthalmology, Oral Surgery, Neurosurgery, Plastic Surgery, Cardiac Surgery, Thoracic Surgery, Accident & Emergency, Anaesthetics, General Medicine, Gastroenterology, Endocrinology, Cardiology, Dermatology, Infectious Diseases, Genito-Urinary Medicine, Neurology, Rheumatology, Geriatric Medicine, Gynaecology, Radiology

Appendix 1: Continued

Shaftesbury Square	Psychotherapy
South Tyrone	General Surgery, Urology, Ear, Nose & Throat, Ophthalmology, Anaesthetics, Pain Management, Gastroenterology, Rheumatology, Geriatric Medicine, Gynaecology, General Practice (Other).
St. Luke's	Mental Illness.
Thompson House	Neurology
Tyrone & Fermanagh	Mental Illness.
Tyrone County	General Surgery, Ear, Nose & Throat, Ophthalmology, Oral Surgery, Pain Management, General Medicine, Rehabilitation, Cardiology, Paediatrics, Geriatric Medicine, Gynaecology.
Ulster	General Surgery, Urology, Trauma & Orthopaedics, Ear, Nose & Throat, Oral Surgery, Plastic Surgery, Paediatric Surgery, Accident & Emergency, Anaesthetics, Pain Management, General Medicine, Haematology (Clinical), Cardiology, Dermatology, Nephrology, Neurology, Paediatrics, Geriatric Medicine, Obstetrics, Gynaecology, Well Babies (Obstetrics), General Practice (Other), Clinical Oncology.
Waterside	Geriatric Medicine
Whiteabbey	General Surgery, Ear, Nose & Throat, Pain Management, General Medicine, Gastroenterology, Cardiology, Dermatology, Nephrology, Geriatric Medicine, Gynaecology.
Whiteabbey PNU	Mental Illness
Windsor House	Mental Illness, Psychotherapy, Old Age Psychiatry

Appendix 2: Hospitals Open within Each Provider for All or Part of Year Ending 31 March 2010

Belfast Health and Social Care Trust	Beechcroft, Belfast City, Cancer Centre, Forster Green, Knockbracken, Mater Infirmorum, Muckamore Abbey, Musgrave Park (now includes Forest Lodge), RBHSC, Royal Maternity, Royal Victoria, Shaftesbury Square, Windsor House
Northern Health and Social Care Trust	Antrim, Braid Valley, Causeway, Dalriada, Holywell, Mid Ulster, Moyle, Robinson Memorial, Whiteabbey, Whiteabbey PNU
South Eastern Health and Social Care Trust	Ards, Bangor, Downe, Downshire, Lagan Valley, Lagan Valley PNU, Thompson House, Ulster, Ulster MHU
Southern Health and Social Care Trust	Banbridge, Bluestone, Craigavon Area, Daisy Hill, Longstone, Lurgan, Mullinure, South Tyrone, St Luke's
Western Health and Social Care Trust	Altnagelvin, Erne, Gransha, Lakeview, NWHI, Tyrone & Fermanagh, Tyrone County

Appendix 3: Hospital Specialties by Programme of Care

Programmes of Care are divisions of healthcare, into which activity and finance data are assigned, so as to provide a common management framework. They are used to plan and monitor the health service, by allowing performance to be measured, targets set and services managed on a comparative basis. In total, there are nine Programmes of Care. However, only five of these are relevant to hospital activity. The relevant hospital specialties within each of the Programmes of Care are shown below.

POC 1 - Acute Services

100 General Surgery
101 Urology
110 T & O Surgery
120 ENT
130 Ophthalmology
140 Oral Surgery
141 Restorative Dentistry
142 Paediatric Dentistry
143 Orthodontics
150 Neurosurgery
160 Plastic Surgery
170 Cardiac Surgery
171 Paediatric Surgery
172 Thoracic Surgery
180 Accident & Emergency
190 Anaesthetics
191 Pain Management
300 General Medicine
301 Gastroenterology
302 Endocrinology
303 Haematology (Clin)
304 Clinical Physiology
305 Clinical Pharmacology
310 Audiological Medicine
311 Clinical Genetics
312 Clinical Genetics & Molecular Genetics
313 Clinical Immunology & Allergy
314 Rehabilitation
315 Palliative Medicine
320 Cardiology
330 Dermatology
340 Thoracic Medicine
350 Infectious Diseases
360 Genito-Urinary Medicine
361 Nephrology
370 Medical Oncology
371 Nuclear Medicine
400 Neurology
401 Clinical Neuro-Physiology
410 Rheumatology
420 Paediatrics
421 Paediatric Neurology

450 Dental Medicine Specialties
460 Medical Ophthalmology
502 Gynaecology
620 GP Other
800 Clinical Oncology
810 Radiology
820 General Pathology
821 Blood Transfusion
822 Chemical Pathology
823 Haematology
824 Histopathology
830 Immunopathology
831 Medical Microbiology
832 Neuropathology
900 Community Medicine
901 Occupational Medicine
990 Joint Consultant Clinics
999 Other

POC 2 -Maternity and Child Health

501 Obstetrics
510 Obstetrics (Ante Natal)
520 Obstetrics (Post Natal)
540 Well Babies (Obstetrics)
550 Well Babies (Paediatrics)

POC 4 Elderly Care

430 Geriatric Medicine
715 Old Age Psychiatry

POC 5 - Mental Health

710 Mental Illness
711 Child & Adolescent Psychiatry
712 Forensic Psychiatry
713 Psychotherapy

POC 6 - Learning Disability

700 Learning Disability

Appendix 4: Definitions

1. Average Available/Occupied Beds

The average number of available and occupied beds during the year in wards that are open overnight, measured at midnight. Hospitals may also have a number of beds in wards that are only open during the day. Beds reserved for day care admission or regular day admission are not included.

2. Average Length of Stay

A measurement of the average length of time spent in hospital. Day Cases and regular attenders are excluded from the calculation.

$$\frac{\text{Average Daily Number of Occupied Beds} \times \text{Days in Year}}{\text{Total Inpatients}}$$

3. % Occupancy

A measurement of the percentage of time that beds are occupied. Day cases and regular attenders are excluded from the calculation.

$$\frac{\text{Average Daily Occupied Beds}}{\text{Average Daily Available Beds}} \times 100$$

4. Throughput

A measurement of the average number of ordinary admissions treated in each available bed open overnight each year. Day Cases and regular attenders are excluded from the calculation.

$$\frac{\text{Total Inpatients}}{\text{Average Number of Available Beds}}$$

5. Turnover Interval

A measurement of the average length of time a bed open overnight remains unoccupied between inpatient admissions. Day Cases and regular attenders are excluded from the calculation.

$$\frac{(\text{Average Available Beds} - \text{Average Occupied Beds}) \times \text{Days in Year}}{\text{Total Inpatients}}$$

Appendix 4: Continued

6. Day Case Rate

The number of day cases is given as a percentage of elective inpatients.

$$\frac{\text{Total Day Cases}}{\text{Total Elective Inpatients + Total Day Cases}} \times 100$$

7. Elective Inpatient

A patient for whom the decision to admit could be separated in time from the actual admission. This excludes emergency admissions and maternity or delivery episodes.

8. Non elective Inpatient

A patient for whom admission is unpredictable and at short notice because of clinical need.

9. Inpatients

Inpatient admissions include both (a) patients admitted electively with the expectation that they will remain in hospital for at least one night, and (b) non-elective admissions (e.g. emergency admissions). A patient who is admitted with this intention but who leaves hospital for any reason without staying overnight is still counted as an inpatient. Day cases and regular attenders are not included.

10. Day Case

A patient admitted electively during the course of a day with the intention of receiving care who does not require the use of a hospital bed overnight and who returns home as scheduled. If this original intention is not fulfilled and the patient stays overnight, such a patient should be counted as an inpatient. Regular attenders have been included within the day case statistics for all programmes of care with the exception of acute services.

11. Regular Day/Night Attender

A patient who is admitted electively and regularly for a planned sequence of days or nights and who returns home for the remainder of the 24 hour period. This method of admission is particularly common for Renal Dialysis and Chemotherapy. Regular attenders have been included within the day case statistics for all programmes of care with the exception of acute services.

Appendix 4: Continued

12. Admissions

Total admissions has been taken to be the sum of all day cases, inpatients (elective and non elective) and regular attenders. Deaths and discharges have been used as an approximation of admissions.

13. FCE - Finished Consultant Episode

A consultant episode is the time a patient spends in the continuous care of one consultant. The episode can be finished because of discharge, death or transfer, either to another consultant or another hospital. As a result, a patient may have more than one FCE during a stay in hospital (if transferred to the care of another consultant).

14. Private Patient Attendances

A private patient is one who has opted to have treatment outside the Health Service and has undertaken to pay for all expenses incurred, including treatment and accommodation costs.

15. Specialty

A specialty is a particular branch of medicine or surgery. Each consultant is assigned a main specialty from a list recognised by the Royal Colleges and Faculties. Information is recorded against the specialty of the treating consultant.

16. Operating Theatre Session

A period of operating time allocated to a consultant firm. If a theatre session and consultant firm are booked before the patients are identified this will be a scheduled theatre session. The total number of intended scheduled sessions may be equal to or less than the sum of scheduled sessions held and cancelled.

17. Live/Still Birth

A birth can be classified as 'live' or 'still'. A still birth is where, after a gestation period of at least 24 weeks, the baby shows no identifiable signs of life at delivery.

Appendix 5: Explanatory Notes

1. The data contained in this publication have been compiled from the quarterly Körner Aggregate Returns (KARs), which were introduced from 01 April 1988 and the Hospital Inpatient System (HIS). They refer to all acute, maternity, mental illness and learning disability hospitals. Any amendments notified by HSC Trusts after 9th August 2010 have not been included.
2. Activity has been grouped into POCs on the basis of the main specialty of the consultant in charge of the patient. In a small number of cases, this may lead to differences between the strict POC and the specialty of the consultant in charge. An example of this would be patients in a hospital ward reserved exclusively for the younger physically disabled who would be included in the Acute Services POC when applying the specialty rule rather than the correct POC of Physical and Sensory Disability. However, the specialty rule will apportion activity to the correct POC in the vast majority of cases.
3. In accordance with the Review of Public Administration, with effect from the 01 April 2007, five new integrated Health and Social Care Trusts (Belfast, Northern, South Eastern, Southern and Western) replaced the previous eighteen Trusts in Northern Ireland. Tables have been presented based on the new Trust Areas.
4. The data for individual hospitals on certain indicators (e.g., 'Average Available Beds') will not always sum to the HSC Trust total or the overall NI total due to rounding. In addition, certain indicators (e.g. 'Throughput') have been derived from unrounded figures for greater accuracy. They may therefore differ slightly from values obtained through using rounded figures in the formulae.
5. Data Availability/Format: All of the data contained in the tables are also available on a quarterly basis and can be supplied by individual specialty or hospital/HSC Trust if this level of detail is required. In addition, data can be supplied in spreadsheet format (Microsoft Excel) in order to aid secondary analysis. The tables are also available at http://www.dhsspsni.gov.uk/index/stats_research/stats-pubs.htm for those with Internet access.
6. The calculation of average length of stay assumes that patients spend the entire length of their stay in hospital within the same specialty. On occasions, patients may be transferred between specialties during the same stay in hospital. In these circumstances, such transfers may slightly skew the average length of stay at a specialty level.
7. Due to inconsistencies in recording practices at some hospitals, the number of average occupied bed may exceed the number of average available beds. In these instances the Percentage Occupancy and Turnover Interval figures have been set to 100% and 0.0 respectively.
8. Royal Belfast Hospital for Sick Children have changed their recording practices regarding the allocation of beds. All beds except those for anaesthetics are now allocated to the paediatric specialty.
9. North West Independent Hospital (NWIH) closed on 23rd June 2009.
10. Whiteabbey PNU closed 23rd December 2009.
11. ENT day cases relocated from the Mater Hospital to the Royal Victoria Hospital during the quarter ending June 2009.
12. A new ENT day ward opened in Whiteabbey Hospital during the quarter ending December 2009.
13. Cataract surgery day cases recorded under the ophthalmology specialty relocated from the Royal Victoria Hospital to the Mater Hospital during the quarter ending December 2009.

Appendix 5: Continued

14. Acute medical services recorded under the general medicine specialty have moved from Tyrone County Hospital to Erne Hospital during quarter ending March 2009.
15. Day cases previously treated in the Bridgewater Suite, Belfast City Hospital are now recorded under Cancer Centre.
16. The dermatology service previously provided in Lurgan Hospital moved to Craigavon Area Hospital at the end of May 2009.
17. A 20 bed obstetrics ward within the Royal Maternity Hospital closed on 26th January 2010.
18. At Whiteabbey Hospital beds required for inpatient gynaecology services are borrowed from other specialties when needed.
19. All mental health services in the Ards Hospital were transferred to a new facility in the Ulster Hospital (Ulster MHU) on 3rd June 2009.
20. The mental health facility known as the 'Young Person's Centre' was renamed 'Beechcroft CAMHS Inpatient Service'.

Appendix 6: Additional Information

Further information on Inpatient and Day Case Activity in Northern Ireland, is available from:

Rachel Stewart

Hospital Information Branch

Information & Analysis Directorate

Department of Health, Social Services & Public Safety

Stormont Estate

Belfast, BT4 3SQ

☎ Tel: 028 905 22592

☎ Fax: 028 905 23288

✉ Email: rachel.stewart@dhsspsni.gov.uk

This Statistical bulletin and others published by Hospital Information Branch are available to download from the DHSSPS Internet site at:

Internet address: http://www.dhsspsni.gov.uk/index/stats_research/stats-activity_stats-2.htm